



Scottish
Correspondence
Chess
Association

NEWS BULLETIN

£2.6

40p

SCOTTISH CORRESPONDENCE CHESS ASSOCIATION
Office-Bearers & Membership 1981-82

	:		Tel. No
President	:	Alan P. Borwell Eboracum, 3 Broomhill Avenue, Perth PH1 1EN	0738-22779
Secretary & Treasurer	:	Dr. Val A. Nye 2 Old Coach Road, East Kilbride, Glasgow 074 4DP	035-52-32391
Assistant Secretary & Treasurer	:	Allan T. Hislop 4 Ascog Street, Glasgow G42 7JN	041-423-0318
Grading Officer	:	George W.G. Livie 55 Glasserton Road, Glasgow 043 2LN	041-637-0722
Publicity & Membership Officer	:	Tommy J. Craig 35 Mayfield Gardens, Edinburgh.	0131-225-4554 (daytime)
International Secretary	:	David A. Kilgour 17a Edzell Court, Ardler, Dundee.	0382-812776
Other Executive Committee Members	:	C.Richard Beecham Gordon M. Anderson 28 Morris Road, 37 Austen Road, Prestwick. KA9 2JW. Jordanhill, (0292-76984) Glasgow G13 1SJ. (0141-959-2417)	
Also co-opted	:	K Gordon Ian W.S. Mitchell, 31 Roselea Road, 54 Strathtay Road, Milngavie, G62 8HE. Perth PH1 2LZ. (0141-956-2950) (Office 0738-24218)	
Honorary Life Member	:	Bernard B. Partridge	
Life Members	:	G.M. Anderson, R. Beecham, P. G. Bennett, Prof G.H. Bird, A.P. Borwell, D. Bryson, T.J. Craig, D. Crichton, R. Dickson, A. B. Dunn, R. Gibson, P.M. Giulian, A. Glass, J. Gracie, A.T. Hislop, R.M. Innes, J.P.E. Jack, R. Jackson, D.M. Jenkins, D. Kilgour, D.M. Livie, G.W.G. Livie, J.P.L. Lumsden, K.B. McAlpine, R.A. MacBrayne, A.J.McClelland, D. McCracken, A. McFadyen, Mrs. M. McGhee, M. E. McGhee, D. McKerracher, I. MacKintosh, T. McMorran, J.N. MacNeill, D. G. McRoberts, J.McTaggart, I.A. Marks, Ross Mitchell, Dr. V.A. Nye, T. Paterson, A. Pearcey, V.A. Proudler, D.W.S. Roach, . J. Savage, J. Seyfried, A.J. Shaw, Dr. K.W.C. Stewart, A. Taylor, T.A.H. Taylor, I.Thompson, J.M. Walker, W.P. Watson, A. Wilson.	
Subscription Rates 1981-82	:	Life Member £20, Annual Member £3 (inc. bulletin) Bulletin only £1.50 for 3 editions (inc postage).	

INDEX OF CONTENTS

		Pages	Pages
Editorial Comment	1	Grading Lists	14-16
Secretarial Notes	1	Games Section	17-23
AGM Minutes	2/3	International Winning Combinations	23
Accounts for Year to 31/05/81	4	Internationals	24-26
World Telechess Olympiad	5-7	How our International opponents	16-17
1980/81 Competitions (inc League)	8-12	Correspondence with I.C.C.F.	26/27
Time Control Article	13	Letters	27/28

Well, here we are with our 6th Bulletin, which completes the set for last season and sets the scene for the 1981/82 season!

We have a splendid new Champion and Scottish Correspondence Chess Master in Douglas Bryson who almost 'achieved the impossible' of a perfect score, dropping only ½ point in winning the Championship - many congratulations!

The League was won by Perth Correspondents (which gave me some pleasure!), but really the most satisfying aspect was the large increase in the number of teams participating last season.

When you receive this edition, George Livie and I will have attended the ICCF Congress in London, when Scotland's application for affiliation will have been considered once again. Let us hope that Scotland's players will, at long last, be able to represent their Country in international team and individual competitions - a right which has been enjoyed by our 'over the board' colleagues via FIDE, since 1932! (nearly 50 years ago).

Finally, could we have some more letters or articles please for publication in this, your magazine. The next Bulletin No.7 is scheduled for January 1982, with Nos 8 and 9 due in May and September respectively.

SECRETARIAL REPORT (by Val Nye)



The AGM has come and gone. Holidays are over for most of us. Thanks to Sealink and the French Mediterranean sun and sea (in my case) - or a Greek taverna - or even a deckchair in the back garden for a few days - we should be refreshed for another season; and we always start a new season with high hopes!

Elsewhere in this issue of the Bulletin you will find Minutes (to be ratified next year) of the AGM, and I would ask you to read them carefully. Don't blame us if your opinions and views were not expressed. You should have passed them to a Controller or a Member of the Executive Committee! We can only comment on and manage the Association's affairs as we ourselves see them and by what those members (who take the trouble) tell us!

Despite one or two very tardy notifications of results and adjudication claims - which we need not have accepted but, given losses to the 'laggards' (as per the Playing Rules) - the season's events seem to have been happily concluded. By now everybody should have received a notice of proposed events for the new season (which also appears in this Bulletin) and entry forms (note the discount for introducing new members!) Prizewinners should also have their prizes - if not, would they please contact me.

I would ask those who are automatically eligible for a place either in the Final or the Candidates, and also those who could have a chance to take up one of the remaining places, to let me know their intentions as soon as possible. I would also ask intending entrants for all our other events to contact me as soon as possible. The sooner we get all your entries in, the sooner we can start off all the new season's events - and the fewer aspirins I will need!

One last point. Would all the match captains please note that we are now calling for teams of five players in the League - instead of four players as previously. This is to ensure that in a division of 6 teams there is contact between every team, whilst in a division of 7 teams any particular team has contact with all the other teams except one (instead of two as previously). This will eliminate the possibility that two teams could each score 100% in the same division!

Well, that appears to be all I can think of - and I have the nagging feeling that there are several things which I should have mentioned but have not) Anyway, on behalf of the Association, I hope you all enjoyed the previous season and I hope every one of you can enlist at least one new member!

SCOTTISH CORRESPONDENCE CHESS ASSOCIATION

Minutes of the Annual General Meeting held at 11.30am on Saturday 13th June 1981 at City Hall, Candleriggs, Glasgow.

Present: G.M. Anderson, C.R. Beecham, A.P. Borwell (President), T.J. Craig, K. Gordon, A.T. Hislop, D. Kilgour, G.W.G. Livie, I.W.S. Mitchell, W. Nunn, V.A. Nye (Secretary/Treasurer) and B.B. Partridge.

Apologies were received from D.G. McRoberts (Thurso).

The Minutes of the previous Annual General Meeting, which had been presented in Bulletin No.3, were approved.

Secretary's Report

The Secretary said that the year had been reasonably successful with two new tournaments - the Candidates in the Championship and the Openings - having been introduced. There was a record number of 20 teams competing in the League, and the welcome addition of three extra Controllers to help to run our Tournaments.

Because of the necessary increase in subscriptions, entries had been slower to come in compared with previous seasons and ordinary membership was down a little. Hopefully, if we could keep our subscription fixed and provided that there were no further postal increases, our membership should grow much larger. We could look to Australia as an example of a country with a population comparable to that of Scotland which had over 1300 members!

The Executive Committee at one of its several meetings had discussed the proposed introduction of a Classification Tournament for the new season, to be played with a slower time control. Such a tourney should suit members with intensive business or other commitments. It would be at the same rate of play as international events. It was also hoped to introduce a brochure which would list the Rules for all our tournaments and contain further information for players. At present, a player had a loose sheet for each event in which he/she participated, and it was felt that such a brochure should prove more helpful.

The Bulletin was continuing to make its mark but naturally the Association would like more members to be involved with it by contributing more articles and news.

Comments were made by A.T. Hislop and B.B. Partridge concerning membership and the events offered on the entry form. The President outlined the proposal by the Executive Committee to offer members a reduced subscription for introducing new members. He also mentioned that the new Classification Tournament would start in April 1982, to avoid 'competing' with existing events.

Treasurer's Report

Before giving his Report, the Treasurer noted that Alan Shaw, our Auditor, had moved South during the season. A change of job was perhaps too drastic a way of getting out of what was such an onerous task (!) but he was sure that we all wished Alan well in his new job. The meeting agreed that the Secretary should write a letter to Alan Shaw thanking him for his services to the Association.

Thanks to Ken Stewart's efforts, we had managed to enlist the help of Hamish Bell - a former pupil of Bernard Partridge and a member of Knightswood Club - to audit the books. Because of increased money flow, it was felt that the Financial Statement should give a comparison with the previous year. Not indicated in the Statement was the donation of a Shield for Division 1 of the League by our President, the engraving costs for which had been taken care of by George Livie. Donations had been gratefully received from Messrs. Kilpatrick, MacBrayne, McMorran and Merrifield. The major increase in expenses was basically due to increased postal charges. The stationery expenses included costs of 5000 domestic scorecards purchased, along with letterheads and international postcards. After taking account of immediate needs, the balance of the cards were sold to Chess Suppliers (Scotland) Ltd., and this was the main reason for the increase in the sales of stationery. It was thought desirable, during the season, to open a General Deposit Account to ensure that money not needed immediately, eg. for Bulletin expenses, would attract income by way of bank interest.

Concerning the finances, the President noted that the ICCF meeting would take place from 15th to 19th September 1981 in London. To continue to press for entry to ICCF we would be well advised to send delegate(s) to the Congress and we would need to contribute towards their travel and accommodation expenses.

The Treasurer's Report was adopted by the meeting. Including the Statement of Account as shown on page 4

President's Report

The President commented briefly on features of another successful year and said that much credit was due to all Controllers and members of the Executive Committee, who he thanked individually. He concluded by mentioning a new milestone in that a Scottish team, comprising SCCA members, and some from the SCA, was due to play against Norway in the 1st round of the 2nd World Telechess Olympiad. The venue was Renfrew and he hoped many members could be present to assist with the various arrangements.

Election of Executive Committee

The following office-bearers were elected:

President - A.P. Borwell; Secretary/Treasurer - V.A. Nye; Assistant Secretary/ Treasurer - A.T. Hislop; Grading Officer - G.W.G. Livie; Publicity Officer T.J. Craig; International Secretary - D. Kilgour. G.M. Anderson and C.R. Beecham were elected to the Committee, and H. Bell was to be asked to continue as Auditor. It was noted that Richard Beecham had wished to stand down from being the International Secretary but would like to give more help with the Bulletin. The meeting thanked Richard for his considerable efforts in developing the large number of international matches which we were playing.

It was noted that the Constitution allowed the co-option to the Executive Committee of members who would have special duties. Accordingly, K. Gordon and I.W.S. Mitchell were co-opted in order to look after the League and to help with the production of the Bulletin, respectively.

Subscriptions

Apart from raising those tournament fees which were 50p to £1, all other subscriptions and tournament fees were to remain unchanged. B.B. Partridge asked about the possibility of increasing advertising in the Bulletin, since this might help to bring down costs. Alan Borwell said that publishers might soon be helping us in this respect with book reviews. It should be borne in mind that General Accident were already being very generous with their help in producing the Bulletin. There was some discussion about the League Membership fee being possibly too low (at £1), but it was felt that such disadvantage was more than outweighed by introducing more players to correspondence chess.

Playing Rules

Arising out of a time claim during the season, there was a question of the interpretation to be put on the word 'immediate' contained in the Playing Rules. In discussion, it was noted that the International Rules specified '7 days'. The view was also put that there might be many players who would like several points in the Playing Rules clarified but who did not consult any of the Controllers. The President said that the Executive Committee and the Controllers should get together in order to clear up any awkward points in the Playing Rules.

Any Other Business

- i. D. Kilgour enquired about the Openings Tournament. The President stated that the Hennig Schara Gambit was proposed for the new season and that Walter Roach had donated money for a trophy.
- ii. I.W.S. Mitchell noted that some correspondence chess organisations had standard reply postcards for use by officials. Such postcards clearly could save a lot of time and effort for a Controller, for example. On behalf of the Association, he would look into this and would produce some drafts of standard reply postcards.

The meeting closed at 1.10pm.

SCOTTISH CORRESPONDENCE CHESS ASSOCIATION

Statement of Income and Expenditure for the Year Ended 31st May 1981

INCOME	<u>1981</u>	<u>1980</u>
	£	£
Life Members' Subscriptions	60.00	40.00
Ordinary Members' Subscriptions	247.00	98.00
Tournament Fees	163.00	120.50
Adjudication Fees	12.00	20.00
Sales of Stationery	139.00	45.05
Sales of Bulletins	115.25	52.50
Donations	6.00	5.50
Bank Interest	<u>53.72</u>	<u>29.64</u>
	795.97	411.19
LESS EXPENDITURE		
Prizes	88.00	102.50
Replica Trophies	-	4.00
Engraving	5.06	4.60
Controllers' Expenses	33.63	23.10
Bulletin Expenses	123.38	77.85
Secretarial Expenses	53.87	29.89
Stationery	152.00	42.25
Hall Rent	8.00	9.55
Affiliation Fees	4.00	4.00
Bank Charges	6.20	5.00
Grading Officer's Expenses	<u>10.00</u>	<u>-</u>
	484.14	302.74
SURPLUS FOR YEAR	<u>311.83</u>	<u>108.45</u>

Balance Sheet as at 31st May 1981

ASSETS

Clydesdale Bank - Current A/c	73.18	45.07
- Prize Fund Deposit A/c	138.06	135.79
- Life Members Deposit A/c	378.18	296.73
- General Deposit A/c	<u>200.00</u>	<u>-</u>
	<u>789.42</u>	<u>477.59</u>

REPRESENTING

Capital Account		
Opening Balance	477.59	369.14
Add: Surplus for Year	<u>311.83</u>	<u>108.45</u>
	<u>789.42</u>	<u>477.59</u>

Glasgow, 8th June 1981

V.A. Nye (Treasurer)

I have examined the foregoing accounts and have obtained such explanations as I considered necessary. In my opinion these accounts give a true and fair view of the state of the Association's affairs at 31st May 1981, and of the surplus for the year ended on that date.

H.B. Hell, CA (Auditor)

SCOTLAND versus NORWAY In the WORLD TELECHESS OLYMPIAD (Report by Alan Borwell)

The World Telechess Olympiad 1st round match between Scotland and Norway was played at the Dean Park Hotel, Renfrew, on Sunday 21st June. Beginning at 10am, the moves were transmitted between the two countries by telephone, with sponsorship being provided by the Scottish Telecommunications Board. When the two outstanding games were agreed for adjudication at 5.45pm, the match score was 3-3. Both positions appeared to be advantageous to Scotland and therefore the home players were confident of the victory which would take them into Round 2. The adjudication decisions had not been received when this edition went for printing.

An additional feature of the match was the inclusion of two non-scoring boards for disabled players, which both resulted in victories for the Norwegians, one of their players being blind and the other physically disabled. The idea was in recognition of the International Year of the Disabled.

The match details were:

Board No.	Scotland	Elo		Norway	Elo	
1 W	C W Pritchett IM	2395	½	A V Gulbrandson	2395	½
2	T J Upton	2305	½	E Paulsson	2380	½
3 W	P A Motwani	2260	½	B Tiller FM	2320	½
4	Dr K B McAlpine (SCA 2160)		0	R Hoen FM	2355	1
5 W	C J Morrison	2240 adj		J H Ulrichsen	2305 adj	
6	D M Bryson (SCA 2245)		1	M Groth	2235	0
7 W	M L Condie	2240 adj		S Agdestein	- adj	
8	Miss R Jackson (SCA 1855)		½	Mrs M Klinger	-	½
Non-scoring	-					
9 W	J Dykes		0	S T Fesche		1
10	F Martin		0	M K Melchier		1

The World Telechess competition is designed for teams made up of 'over the board' and 'postal' chess players and is run jointly by FIDE and ICCF. Scotland had three postal chess players in its team on boards 4, 5 and 6, although telephone/telex chess tends to be more favourable to over the board players rather than correspondence players.

The games were all keenly contested, with the 50 moves in 2 hour time limit being a key factor on several boards. The only player to suffer the ultimate penalty of losing on time was Ken McAlpine, but both Paul Motwani and Chris Morrison came very close to joining him. The 'flags' on the Norwegian players' clocks must also have been precariously placed, judging from the clock times being exchanged over the telephone lines. Certainly the Arbiter, Dr. Ken Stewart, was kept busy and the same must have been the case in Norway!

In the early stages of the match, Scotland seemed to have the initiative in several games, although it was not too clear whether Craig Pritchett's knight sacrifice for two pawns on board 1 would be sufficient. However, a draw was agreed, when repetition of moves seemed the probable outcome.

Tim Upton always had a sound position to ensure equality and Paul Motwani offered a draw when in time trouble, after having a slight initiative for most of the game.

Ken McAlpine's valiant efforts to obtain full equality with the black pieces, against a very strong and careful opponent, seemed to have materialised when a bishops of opposite colour ending was reached. However, the presence of two rooks each and white's slightly more active position could have been sufficient for the Norwegian player to win had Ken not lost on time with 5 more moves to play.

On the bottom board, the youthful Rosie Jackson played very soundly against her experienced lady opponent and seemed to have the better of most of the game. However, numerous exchanges led to king and pawn ending which was agreed drawn when repetition of position was about to occur.

Probably the best game played for Scotland was by one of our postal chess representatives, Douglas Bryson, on Board 6. With the black pieces he adopted an aggressive variation of the Slav Defence and the following lively encounter ensued:-

World Telechess Olympiad 1981
Round 1 Scotland v Norway Bd. 6

White : M.Groth (Norway)

Black : D.M.Bryson (Scotland)

1 c4 e6
 2 Nc3 d5
 3 d4 c6
 4 Nf3 Nf6
 5 Bg5 dc5:
 6 e4 b5
 7 e5 h6
 8 Bh4 g5
 9 Ng5: hg5:
 10 Bg5: Nbd7
 11 ef6:

This move can be delayed until Black's Queen moves. 11 g3 may be better. If then Black plays ...Qb6 12 ef6 Bb7 13 Bg2 0-0-0 14 Qg4 ! Rg8 15 Qf4 b4 ! 16 Ne2 Qa5 -unclear

11 Bb7
 12 g3 c5
 13 d5 Qb6
 14 Bg2 0-0-0
 15 0-0 b4
 16 de6: Bg2:
 17 Kg2: Qe6:!

With the threat of Qh3ch, White must now sacrifice his knight and hope for something on the Q aide.

18 h4 bc3:
 19 Qf3 cb2:

Undaunted, Black continues to carry the game to his opponent !



20 Rad1

There is little to be gained from an early Qa8ch as Black can reply Nb8 and exchange Queens with Qc6ch.

20 Qb6
 21 Kg1 Bh6 !

Black can afford to develop, even at the cost of a piece. The pawn on b2 is useful!

22 Qa8ch Kc7
 23 Rd7:ch Rd7:
 24 Qh8: b1 = Q
 25 Bh6 Rd1
 26 Bf4 ch Kd7
 27 Qf8 Rf1 ch
 28 Kg2 Qe4 ch

A neat 'coup de grace'. Rooks can be given away when you have two Queen's to play with:

WHITE RESIGNS, as he is mated after capturing the rook.

Brief notes by the Editor.

In the remaining games on boards 5 and 7 respectively, the positions at the time for adjudication had been reached via rather different circumstances.

Chris Morrison had a long uphill struggle for much of his game but, in typical style, managed to secure an advantage at the critical stage when in severe time trouble.

On the other hand, Mark Condie always had the initiative and his opponent only managed to survive until adjudication by giving up his Queen for a rook just before the finish.

ULRICHSEN



MORRISON
White to move (his 51st.)

AGDESTEIN



CONDIE
Black to move (his 53rd.)

Although Chris Morrison had repeated positions during the time scramble he had not tried Kf5, which seemed to offer the best winning prospects. However, After 51 Kf5, black could play his rook to c2 and h2 (or even f2) which makes it a little difficult for white to advance his kings side pawns. However, a possible winning sequence could start with :

51 Kf5 Rc2 52 Ra8ch Ke7 53 Ra7ch Ke8 54 Rc7 Ra2: 55 h4 Rh2 56 h5

The sub-variations are infinite and a whole book could be devoted to a complete analysis!

In the other game, at first glance, it appears that black was very optimistic in wanting the position to be sent for adjudication. However, sometimes Q v R endings can be difficult to win, particularly with the pawns blocked and the defending king is in a secure position. If black keeps his K and R on the seventh rank, then the best method for Mark Condie could be to first capture the pawn on f3, improve the position of his king to f5, perhaps a pawn exchange at f4 and queen infiltration to g6. If black tries to prevent this by manoeuvring his rook forward say to C4, then a possible sequence might be:

... Re7 54 Qf3 Re5 55 Qb7ch Kg6 56 Qc8 Re4 57 Qg8ch Kh6 58 f3 Rf4 59 Kg2 f5 60 Qh8ch Kg6 61 Qh5ch Kf6 62 Qh6ch Ke5 63 Qxg5 etc.

Finally, a word of thanks to Scottish Telecoms for providing the telephone lines, Dean Park Hotel for facilities, Steve Mannion for making the arrangements, Ken Stewart for equipment and acting as Arbiter and Gerald Bonner for being Scotland's team captain; to Mike McKenzie and David Wallace for assisting Steve and myself on the telephone and to all those SCA and SCCA members who helped with stewarding and upkeep of the demonstration boards for the 8 hours duration of the Norway match!

John Sharp has been asked by his American opponent, Steve Hanson, if other players from Scotland would like some friendly games. Anyone interested should write direct to Steve at 1024 East Sanborn Winona, MN 55987, U.S.A. sending him an opening move ! Members wishing friendly games with overseas opponents on a random basis should intimate this to our new International Secretary, David Kilgour!

Readers' letters/articles etc

This Bulletin was instigated to encourage members to express views about their Association and its activities, and all contributions will be welcomed :

Articles - to the Editor
Games - to the Games Editor
Letters - to the Editor,
the Secretary or any other
Controllers or Executive
Committee Members.

COMPETITIONS 1980/81

Scottish Correspondence Chess Championship (Bernard Partridge)

This was a fine season of championship games characterised by rapid yet keen and thoughtful play. Douglas Bryson kept up his incisive play of early on in the tournament, and he finished by scoring a marvellous victory, dropping only half a point in 10 games. That half point he conceded to runner-up Philip Giulian who, with 7 points, did not lose a game. R. Jackson was a good third with 6½. just in front of D. Kilgour with 6. No-one failed to win at least one game and the score sheets bear witness to many close hard struggles.

The Candidates Tournament was a keen competition with Simon Gillam narrowly achieving first place, despite losing to runner-up Chris Boyle in their individual game. Also guaranteed of promotion to the Championship in the coming season are Peter Watson and George Pyrich.

Premiers and Majors

Despite a number of withdrawals, there were some very competitive sections with Alan Shaw, R. Kilpatrick, Douglas Livie and George Weeden securing certain promotion to the Candidates.

Quartets

The Postal Knight was won by Ian Thompson, whilst L.J. Lane retained the Postal Shield. The Final for the Postal Rook resulted in a tie between holder J. Lewis and G. Hamilton.

SCCA League

Champions for the first time are Perth Correspondents who won with a little to spare from the holders Chess Suppliers (Scotland) and Falkirk RSVP. These three, plus Division II section winners Dreghorn A, Crowwood II and Bon Accord 'A', are likely to be the six teams in the new season's Division One, but the final constitution of Divisions will be decided when all entries have been received.

League 1980/81 Final Positions in each Division were:

Division I	Division II 'A'	Division II 'B'
Perth Correspondents - 7	Dreghorn 'A' - 7	Crowwood II - 6
Chess Suppliers - 5½	Kirkcaldy - 5½	Bon Accord 'A' - 6
Falkirk RSVP - 5½	Crowwood - 4	Falkirk Bairs - 4½
Duntocher - 5	Dounreay - 3½	Glasgow Lads - 4
Perth Players - 1	Black Knight - 3½	Dreghorn 'C' - 4
Airdrie Pawnbrokers - 0	Castle - 3	Lancelot Etcetera - 2
	Bon Accord 'B' - 1½	Dreghorn 'B' - 1½

COMPETITIONS 1981/82

The individual competitions will include almost all of the events as for last season, ie. Championship, Candidates, Premiers, Majors, Quartet finals and qualifying sections, the Handicap and an Openings Tournament. For the latter, Walter Roach has kindly provided a keepsake trophy for the winner of the event, which will use the Hennig-Schara Gambit. The Swiss will be discontinued but new Classification Tournaments (starting 1st Apl.1982) will be introduced, using slightly slower time limits of 10 moves per 30 days. It is hoped members may be able to play in our regular events starting early November and also the new Classification events starting 5 months later, when the earlier games should be well advanced. The league will comprise of teams of five(5) players in each six team division to ensure a full round-robin of pairings. Sections and pairings will be fixed in October.

SCOTTISH CORRESPONDENCE CHESS LEAGUE 1980-81 (Ken Gordon)

LEAGUE DIVISION I

Airdrie Pawnbrokers

	<u>Team A</u>	
1	J Lewis	0 0 v E1
2	A H Kerr	0 0 v D2
3	C T W Beveridge	0 0 v C3
4	D McFarlane	0 0 v B4

Falkirk RSVP

	<u>Team D</u>	
1	J Campbell	1 ½ v B1
2	J McLay	1 1 v A2
3	G Hamilton	0 0 v E3
4	A Glass	1 1 v F4

Black Knight

	<u>Team A</u>	
1	K Warren	0 0 v G2
2	M E McGhee	0 ½ v F2
3	R Mitchell	1 1 v C3
4	D Lawson	½ ½ v D4

Crowwood I

	<u>Team D</u>	
1	J Clayton	0 0 v E1
2	J McGuinness	½ ½ v C2
3	D L Gillespie	1 1 v G3
4	C Cameron	½ ½ v A4

Bon Accord

	<u>Team A</u>	
1	G E Lobley	1 1 v G2
2	A Vizy	1 1 v F2
3	R D Picken	½ ½ v C3
4	R Daniel	½ ½ v D4

Falkirk Bairns

	<u>Team D</u>	
1	D Bell	1 0 v E1
2	A Thomson	1 ½ v O2
3	K Clark	1 0 v G3
4	J Davie	½ ½ v A4

Chess Suppliers

	<u>Team B</u>	
G W G Livie	0 ½ v D1	
A J Shaw	½ ½ v C2	
P Watson	1 1 v F3	
D M Livie	1 1 v A4	

Perth Correspondents

	<u>Team E</u>	
A P Borwell	1 1 v A1	
J E Hawkes	1 ½ v F2	
K A Mitchell	1 1 v D3	
I McKintosh	1 ½ v C4	

DIVISION II A

Bon Accord B

	<u>Team B</u>	
S Munro	0 0 v G1	
K D Anderson	1 ½ v E2	
T Dorman	0 0 v F4	
L Battersby	0 0 v C4	

Dounreay

	<u>Team E</u>	
D J Savage	0 0 v D1	
D G McRoberts	½ 0 v B2	
T A H Taylor	½ 0 v F3	
A Proudler	0 ½ v G4	

Kirkcaldy

	<u>Team G</u>	
G Pyrich	1 1 v B1	
I Marshall	1 1 v A1	
J Webster	0 0 v D3	
M C Grayson	1 ½ v E4	

DIVISION II B

Crowwood II

	<u>Team B</u>	
W. Hutchison	1 1 v G1	
C Hutchison	½ ½ v E2	
A Barlow	½ ½ v F4	
J Corbett	1 1 v C4	

Dreghorn C

	<u>Team E</u>	
J Shankland	1 0 v D1	
R Young	½ ½ v B2	
B Teaz	1 0 v F3	
D O'Hare	0 1 v G4	

Lancelot Etcetera

	<u>Team G</u>	
J Sharp	0 0 v B1	
C R James	0 0 v A1	
Mrs G Sharp	1 0 v D3	
A Peace	1 0 v E4	

Duntocher

	<u>Team C</u>	
A J McClelland	1 ½ v F1	
M Sutherland	½ ½ v B2	
R Dickson	1 1 v A3	
R Beacon	0 ½ v E4	

Perth Players

	<u>Team F</u>	
A D Cochrane	0 ½ v C1	
J A Findlay	0 ½ v E2	
I W S Mitchell	0 0 v B3	
A S Collie	0 0 v D4	

Castle

	<u>Team C</u>	
D Stewart	0 0 v F1	
S Douglas	½ ½ v D2	
G Taylor	0 0 v A3	
A McDonald	1 1 v B4	

Dreghorn A

	<u>Team F</u>	
J Parks	1 1 v C1	
D M Gillespie	1 ½ v A2	
J Docherty	1 ½ v E3	
R Scott	1 1 v B3	

Dreghorn B

	<u>Team C</u>	
J Teaz	0 0 v F1	
R Alexander	½ 0 v D2	
R Philson	½ ½ v A3	
S Jeffrey	0 0 v B4	

Glasgow Lads

	<u>Team F</u>	
T Russell	1 1 v C1	
M Dyer	0 0 v A2	
R Cameron	1 0 v E3	
M O'Leary	½ ½ v B3	

INDIVIDUAL TOURNAMENTS 1980 - 1981

SCOTTISH CORRESPONDENCE CHESS CHAMPIONSHIPS

CHAMPIONSHIP (One game against each opponent)

		Be	Br	G	H	Ja	Je	K	Mc	Ma	Me	W	Pts	Pos
C.R. BEECHAM	PRESTWICK		0	½	1	0	½	0	½	1	½	1	5	5=
D.M. BRYSON	GLASGOW	1		½	1	1	1	1	1	1	1	1	9½	1
P.M. GIULIAN	NEWTON MEARNS	½	½		1	1	½	½	1	½	½	1	7	2
A.T. HISLOP	GLASGOW	0	0	0		½	0	1	1	1	1	½	5	5=
R. JACKSON	ABERDEEN	1	0	0	½		½	1	½	1	1	1	6½	3
D.M. JENKINS	INVERNESS	½	0	½	1	½		0	0	1	1	½	5	5=
D.A. KILGOUR	DUNDEE	1	0	½	0	0	1		1	1	½	1	6	4
A.J. McCLELLAND	CLYDEBANK	½	0	0	0	½	1	0		0	1	1	4	8
I.A. MARKS	CUMBERNAULD	0	0	½	0	0	0	0	1		½	0	2	10=
M. MELDRUM	AYR	½	0	½	0	0	0	½	0	½		1	3	9
J. WILLIAMS	GLASGOW	0	0	0	½	0	½	0	0	1	0		2	10=

The top four placed players will be eligible to enter for the 1982 Championship, as will the top four placed players in this season's Candidates Tournament. The remaining places in the 1982 Championship will be allocated depending on entries received. Factors such as the entry of a recent champion, ties in either the 1981 Championship or Candidates etc will be taken into account.

CANDIDATES (One game against each opponent)

		Q	B	S	W	A	G	P	B	N	Pts	Pos
D. QUINN	EAST KILBRIDE		0	0	0	0	0	0	0	0	0	9
W.G. BRADY	CLYDEBANK	1		0	0	0	0	½	½	½	2½	8
G.H. SPROTT	LASSWADE	1	1		½	0	0	½	½	0	3½	7
W.P. WATSON	GIFFNOCK	1	1	½		½	0	½	1	½	5	3=
G.M. ANDERSON	GLASGOW	1	1	1	½		0	0	0	½	4	6
S. R. GILLAM	THORNTON HEATH	1	1	1	1	1		½	0	½	6	1
G.D. PYRICH	KIRKCALDY	1	½	½	½	1	½		½	½	5	3=
C.F. BOYLE	CAMBUSLANG	1	½	½	0	1	1	½		1	5½	2
Dr. V.A. NYE	EAST KILBRIDE	1	½	1	½	½	½	½	0		4½	5

Unfortunately, because of increased business commitments, two players had to withdraw from this event shortly after all competitions had been started. It was decided to continue on the basis of a nine player tournament this season, but to make it an eleven player event in future years. Outright winners of Premier Sections will be eligible for next season's Candidates, as will those 1981 Championship players who are not allocated a place in the 1982 Championship. Remaining places will be allocated depending on entries received, ties, etc.

Premier Section (Two games against each opponent)

P 71	H	D	SH	SU	SW	V	Pts	Pos
Major W.E.BRUGES		11	00	10	00	1½	4½	4
M.DYER	00		00	00	00	0		W/D
A.J.SHAW	11	11		11	1½	11	9½	1
M.SUTHERLAND	10	00	00		00	00	1	5
M.A.SWYSTUN	11	11	0½	11		1½	8	2
J.W.VERNON	0½	11	00	11	½		5	3

P 73

	B	C	K	L	M	S	Pts	Pos
C.T.W.BEVERIDGE		11	11	01	10	11	8	2
J.A.CLAYTON	00		00	00	00	11	2	4
A.H.KERR	00	00		00	00	00	0	W/D
D.M.LVIE	10	11	11		11	11	9	1
R.A.MacBRAYNE	01	11	11	00		11	7	3
G.SCHOLES	00	00	00	00	00		0	W/D

MAJOR SECTIONS (Two games against each opponent)

M 33	A	HA	HU	S	T	Pts	Pos
A.M.ANDERSON		00	00	½	10	1½	5
Mrs. E.HARTFORD	11		½	1½	½½	5	2
D.A.HUGHSON	11	1½		1½	11	7	1
J.SHARP	1½	0½	0½		00	2½	4
J.TAYLOR	01	½½	00	11		4	3

M 35

	HA	HE	L	M	MC	R	Pts	Pos
H.HARVEY		0	00	00	00	11	2	5
J.M.HERRIES	11		00	00	00	11	4	4
L.J.LANE	11	11		00	11	11	8	2
S.G.MACKIE	11	11	11		½½	11	9	1
T.McMORRAN	11	11	00	½½		11	7	3
A.REID	00	00	00	00	00		0	W/D

QUARTET TROPHIES 1981 All play all events, two games against each opponent.

POSTAL KNIGHT FINAL (holder A.H.KERR)

Q 88	C	K	S	T	Pts	Pos
J.A.CLAYTON		00	00	0		W/D
A.H.KERR	11		--	00	2	3
M.SUTHERLAND	11	--		½½	3	2
L.THOMPSON	11	11	½½		5	1

POSTAL ROOK FINAL (holder J.LEWIS)

Q 90	H	K	L	S	Pts	Pos
G.HAMILTON		11	01	11	5	1=
J.KENNEDY	00		00	00	0	4
J.LEWIS	10	11		11	5	1=
D.J.SAVAGE	00	11	00		2	3

Q 92	C	Mc	R	W	Pts	Pos
K.GORDON		00	11	11	4	2
A.J.McCLELLAND	11		11	10	5	1
G.A.REAVES	00	00		00	0	4
J.M.WALKER	00	01	11		3	3

Q 94	B	C	L	T	Pts	Pos
S.BRADY		½	11	11	4½	1=
S.R.CAPSEY	½		11	½½	4½	1=
J.P.L.LUMSDEN	00	00		00	0	W/D
T.A.H.TAYLOR	00	½½	11		3	3

P 72	G	H	K	L	P	V	Pts	Pos
D.L.GILLESPIE		½	0½	11	00	½	4½	4
F.HALL	½		00	11	01	00	3½	5
R.KILPATRICK	1½	11		11	01	½	8	1
J.P.L.LUMSDEN	00	00	00		00	00	0	W/L
A.C.PETRIE	11	01	10	11		1½	7½	2
A.C.VENN	1½	11	½	11	0½		6½	3

P 74

	B	D	H	T	W	W	Pts	Pos
C.J.BOWN		00	11	00	0½	01	3½	5
R.DICKSON	11		11	00	½½	00	5	4
G.HAMILTON	00	00		00	00	00	0	6
L.THOMPSON	11	11	00		00	11	6	2
G.WEEDEN	1½	½½	11	11		1½	8	1
I.P.WHITTAKER	10	11	11	00	0½		5½	3

M 34

	B	C	Mc	Mu	W	Pts	Pos
S.BRADY		1½	½½	11	11	6½	1
D.CRUGHTON	0½		½½	01	½	3	3=
J.McTAGGART	½½	½½		1½	1½	5	2
R.MURPHY	00	10	0½		½	3	3=
K.WARREN	00	1½	0½	½		2½	5

The winner of each Major Section will be eligible to play in a Premier Section next season. The next placed player may also gain promotion, if vacancies exist.

POSTAL SHIELD FINAL (holder L.J.LANE)

Q 89	B	D	L	P	Pts	Pos
R.BEACON		1½	½	01	3	2=
R.DICKSON	0½		½½	½	2	4
L.J.LANE	½	½½		1½	4	1
A.C.PETRIE	10	½	0½		3	2=

Q 91	C	H	M	R	Pts	Pos
T.J.CRAIG		00	00	00	0	W/D
J.M.HERRIES	11		00	00	2	W/D
J.McTAGGART	11	11		11	6	1
A.REID	11	00	00		2	W/D

Q 93	Mac	Mc	M	P	Pts	Pos
R.A.MacBRAYNE		½½	½	11	3½	3
T.McMORRAN	½½		01	11	4	2
R.MURPHY	½	10		11	4½	1
A.PEACE	00	00	00		0	4

Q 95	D	L	M	P	Pts	Pos
R.DICKSON		0½	00	11	2½	3
J.H.LAWSON	1½		00	11	3½	2
I.W.S.MITCHELL	11	11		1½	5½	1
V.A.PROUDLER	00	00	0½		½	4

OPENINGS TOURNAMENT (Ian Mitchell)



This new competition gives each competitor two games, one with each colour, against all the other players in the section. The opening chosen for the current season is the Alapin Variation of the French Defence:- 1 P-K4 P-K3 2 P-Q4. P-Q4- 3 B-K3

OT1	B	D	D	E	Pts	Pos
R.Beacon	█	11	½1	11	5½	1
A.J.Doherty	00	█	½0	11	2½	3
R.Dickson	½0	½1	█	11	4	2
J.Eadie	00	00	00	█	0	4

OT2	B	C	R	S	Pts	Pos
R.W.M.Baxter	█	11	11	½1	5½	1
J.S.Cairney	00	█	11	½0	2½	3
A.Reid	00	00	█	00	0	W/D
M.Sutherland	½0	½1	11	█	4	2

HANDICAP TOURNAMENT (by Allan Hislop)

Over 150 results have come in during the season, so the Handicap is proving as popular as ever. My apologies to one or two players who had to wait a while before I could pair them during the season. Many a time I had a Class 6 player and a Class 3 player waiting, but of course I cannot pair more than two classes apart. However, if you have asked for a new opponent, there is no fear of being forgotten!

Promotions this year are as follows:

G.R. Sprott to Class 1

L. Lane, R. Dickson, R. MacBrayne and J. Vernon to Class 2

J. Jack, J. Rose and J. Lawson to Class 3

J. Sharp, C.R. James, J. Merrifield, T. Paterson, A. Peace,

J. Brannan and R. Murphy to Class 4

J. Mair, A. Livie and R. McGeachan to Class 5

Prizes were won by the following for best average scores:

J. Sharp, J. Brannan, J. Merrifield, R. Dickson, D. Quinn. G.R. Sprott and J. Lawson.

SWISS TOURNAMENT 1979/81 (Allan Hislop)

Final Round Results

D. Crichton	1½	v	R.A. MacBrayne	½	J.M. Herries	0	v	J. McLay	2
D. Crichton	½½	v	M. Melville	½½	C.R. James	1	v	T.A. Taylor	1
G. Hamilton	0	v	C.R. James	2	R.A. MacBrayne	1½	v	G.R. Sprott	½
G. Hamilton	2	v	J.M. Herries	0	M.E. McGhee	00	v	J. McLay	00
E. Hartford	½½	v	M. Melville	½½	G.R. Sprott	½½	v	M.E. McGhee	½½
E. Hartford	2	v	R. Mitchell	0	R. Mitchell	0	v	T.A. Taylor	2

Final Placings

1st	D. Crichton	9 pts	After a very closely fought final round, congratulations go to David Crichton on winning the tournament. Equal second were
2nd =	(R.A. MacBrayne	8 pts	Elaine Hartford and Bob MacBrayne with 8 pts each.
	(R. Hartford	8 pts	
	G.R. Sprott	7 pts	
	M. Melville	7 pts	
	G. Hamilton	6 pts	The grading prize was narrowly won by T.
	M. McGhee	4 Pts	Taylor, Thurso, from M. Melville and C.R. James.
	C.R. James	3 pts	
Grading	T.A. Taylor	4 Pts	Thanks are due to the competitors in this last
	J. McLay	2½ pts	Swiss whose play and keenness made it an easy
	J.M. Herries	1½ pts	task to control. With only 12 players taking
			part, it was nearly an all-play-all tournament
			rather than a normal Swiss arrangement!

TIME CONTROL (by Allan Hislop)

It's a pity we have to have a time control at all. For many players it is not necessary except as a check as to when they posted a move in the event that the scorecard goes missing. Most CC games would proceed as normal with no time control and would still reach the average number of moves by the adjudication date. Of course these games may not proceed so well without the discipline of a time control but it would be interesting to have a tournament without a time control, just a starting date and adjudication date, and to compare them with games played under a time control.

However, there are a small number of players who seem to get into time trouble in CC and I would put them into three categories:

1. The new player to CC (usually a youngster) who starts off at a fair rate but after eight or nine moves, runs grossly out of time. This I think is due to loss of interest, or postal costs, or other interests taking over. Giving this player a time control of, say, ten moves in twenty weeks would make no difference.
2. Some players who wish to keep each game within the thirty moves per seven month season. There are various reasons for this, not the least among them are the financial ones. It is against this type of player that I get marginal time claims from opponents. By marginal, I mean $\frac{1}{2}$ - 1 day over the time limit. I usually have sympathy for the offender because I feel he is being honest in recording date of receipt of move.

The other side of the coin are the complaints, albeit few, from players whose opponents seem to have poor postal delivery times! These games drag along very slowly and in complaints from frustrated opponents, I advise them to take it up with their local postal sorting office. This can be quite effective, especially if first class post is being used.
3. The keen player who has heavy commitments outside CC, either in OTB chess or private matters. These players find that to meet the present rate of play, they have to rush their replies, with a corresponding drop in the quality of their play. So we get a few players who do not play in CC or at best play for one season but find it too much to fit in. It's this last category we are trying to accommodate this season.

I personally would like to have the season starting in the middle of September, with adjudication at the end of July. This would give nine clear months and would allow the rate of play to be extended to 10 moves in 30 or even 35 days. At this rate of play, we would get at least 35 moves each per game and in fact games would probably be longer than that.

However, the problem is getting started in September due to the holidays in August, and application to play would have to be in during that period. Also we have found that players don't think about CC till the end of September or until the nights are getting darker.

The other method, and the one we have chosen, is to start a tournament at the end of February, with adjudication at the end of January the following year. This will allow a much greater time rate per move. However, it will mean playing during the summer months and time will be lost due to the holiday period in July and August. With holidays at different times, we may lose one month's play and the tournament will then be in fact over ten months' actual play. However, it should attract players who otherwise would not play CC and in fact there will be those who wish to take up another tournament as their games start to end in the Spring.

The snag is that it has to be a separate tournament for these players and we will not likely see them in the Scottish Championships.

What is the answer? Could we run our present tournaments say from November to October?? Ahem I wonder, what do you think?

GRADING MATTERS (by George Livie)

The immense enjoyment to be derived from correspondence chess is reflected by the increasing number of players participating in the wide range of events organised by the Scottish Correspondence Chess Association. The published grading list represents only a small percentage of competitors and, as usual, a few promising players blush unseen. A noticeable example is K.A. Mitchell.

When the opportunity arises, controllers should continue to place ungraded players, in sections, where they will compete against graded players, thereby, accelerating a published grading. Alas, a few more names have been transferred to the unpublished inactive list, as they do not have any recorded results for the past three years and have no games in progress. By contrast Bob McBrayne played 33 games this year but even he was eclipsed by the 44 games played by R. Dickson. Coincidentally each attained an improved grade of 147.

Games other than in S.C.C.A. or I.C.C.F. events can be graded only if the competitor advises the Grading Officer of the details of the event within two months of its commencement.

The most outstanding performance of the year was by Douglas Bryson, a convincing winner of the Scottish Championship. He has now achieved the necessary 3 norms and his nomination for the award of Master Title has been approved by the Executive Committee. On behalf of the Association I extend to Douglas our congratulations and sincere best wishes for the future.

The main grading list once again consists of:

- (a) Recognised players - those who have twenty or more recorded results against recognised or provisionally graded players.
- (b) Provisionally graded players (shown by asterisk) - those who have at least eight recorded results against recognised or provisionally graded players.

SCOTTISH CORRESPONDENCE CHESS MASTERS

K.B.McALPINE

D.M.BRYSON

HOLDERS OF NORMS

D. JENKINS 1 NORM 1979

D. McKERRACHER 1 NORM 1979

C.J. MORRISON 2 NORMS 1980

MAIN GRADING LIST

D.G.	ANDERSON	157*	R. E.	CLAPHAM	105*	R.M.	INNES	147
G.M.	ANDERSON	169	J.A.	CLAYTON	129	J. P. E.	JACK	109*
R.W.M.	BAXTER	209	T.J.	CRAIG	194	R.	JACKSON	186
R.	BEACON	151*	I.	CREELMAN	122*	D.M.	JENKINS	183
R.	BEECHAM	189	D.	CRICHTON	146*	A. H.	KERR	122
K.	BEER	147*	R.	DICKSON	147	D.	KILGOUR	203
C.T.W.	BEVERIDGE	159	M.	DYER	124*	R.	KILPATRICK	163
G.H.	BIRD	156	P.M.	GIULIAN	203	A.G.	KIRKLAND	179
A.P.	BORWELL	201*	A.	GLASS	158*	L.J.	LANE	149
C.J.	BOWN	139*	K.	GORDON	140	J.H.	LAWSON	152*
C.F.	BOYLE	176*	J.R.	GRACIE	166*	R.	LAWSON	179
W.G.	BRADY	165	F.	HALL	124	J.	LEWIS	177
W. E.	BRUGES	162	G.	HAMILTON	135*	D.M.	LIVIE	156*
D.	BRYSON (SM)	225	P.D.	HAMPTON	70*	G.W.G.	LIVIE	180
J.S.	CAIRNEY	119*	MRS E.A.	HARTFORD	148	J.P.L.	LUMSDEN	143
I.S.	CAMPBELL	170	J.H.	HERRIES	101	J.	MAIR	74
S.R.	CAPSEY	133*	A.T.	HISLOP	174	I.A.	MARKS	169
G.	CHANDLER	159*	H.D.	HOLMES	179		continued	

I.	MARSHALL	161	MRS M. E. McGHEE	162*	G.R.	SPROTT	156
B.J.	MARTIN	159	D. McKERRACHER	177	A.J.	STEWART	115*
M.	MELDRUM	177*	I. MACKINTOSH	154	M.	SUTHERLAND	133*
M.	MELVILLE	135*	J. McLAY	135	G.L.	SUTTON	170
I.W.S.	MITCHELL	124*	A. McLENNAN	150*	M.A.	SWYSTUN	165
R.	MITCHELL	55	T. McMORRAN	137*	T.A.H.	TAYLOR	106*
C.J.	MORRISON	208*	J.N. McNEILL	235*	I.	THOMPSON	166
G.	MORRISON	199*	D.G. McROBERTS	125	J.W.	VERNON	149
R.	MURPHY	121*	V.A. NYE	169	J.M.	WALKER	101*
K.B.	McALPINE (SM)	227	T. PATERSON	113*	K.	WARREN	117*
R.A.	MACBRAYNE	147	A.C. PETRIE	157*	J.	WATSON	100*
B.	McCAMON	155*	V. PROUDLER	107*	W.P.	WATSON	181
A.J.	McCLELLAND	167	G.D. PYRICH	172*	G.	WEEDEN	168*
J.S.	McCORMACK	91	D. QUINN	145	J.	WILLIAMS	161
D.	McCRACKEN	134	W.S. ROACH	153*	A.	WILSON	95*
A.	McFADYEN	122	D.J. SAVAGE	159	R.	WILSON	128*
M. E.	McGHEE	144	J. SEYFRIED	184	S.D.	YOUNG	148*

The supplementary list comprises of players who have twenty recorded results against any grade of opponent or six results against provisionally graded or recognised players.

SUPPLEMENTARY GRADING LIST

S. R.	GILLAM	187	J. MACARTHUR	141	A.J.	SHAW	183
D. L.	GILLESPIE	144	A. PEACE	83	A.	TAYLOR	112
C.R.	JAMES	108	A. PEARCEY	86	J.	TAYLOR	80
W.	MONAGHAN	57	A. REID	63	I. P.	WHITTAKER	154
G.	MULHOLLAND	132	J. SHARP	116			

DOUGHTY BAKERS DOZEN 1981

The "Doughty Bakers Dozen" shows players who have achieved the best results over ten or more games in the last season. Their grading of games played this year is shown in brackets but I again stress that their official grading, which is taken over twenty games, is shown on the main grading list.

1	D.	BRYSON (SM)	(234)	8	A.J.	SHAW	(184)
2	D.	KILGOUR	(205)	9	D.M.	JENKINS	(183)
3	P. M.	GIULIAN	(202)	10	G.	WEEDEN	(177)
4	R.	JACKSON	(195)	11	I.	THOMPSON	(174)
5	R.	BEECHAM	(188)	12	G.H.	ANDERSON	(172)
	W.P.	WATSON	(188)		D.M.	LIVIE	(172)
7	S.	GILLAM	(187)				

For the third successive year our top graded player of the season has attained a higher grade than the top player of the previous season. Conversely, the average grade of the "Dozen" has fallen.

1979	Average Grade	196.2
1980	" "	192.5
1981	" "	189.3

Does this suggest there is a greater degree of competitiveness between the top players? If so, it is obviously a good sign.

Douglas Bryson regains his 1979 1st place and retains his unbeaten record for the 3rd successive year. David Kilgour continues his upward trend for the third year in succession. Phil Giulian holds on to his 3rd position for the 2nd year running and remains unbeaten in Scotland during this period. Richard Beecham moves to occupy 5th place, having been 6th in 1979 and 1980. David Jenkins, despite illness, shows consistency by appearing on the list for three successive years. Peter Watson gets a second mention and lost only one game to Simon Gillam, who makes his first appearance as does Robert Jackson, Alan Shaw, George Weeden, Ian Thompson, George Anderson and Douglas Livie.

continued over

GRADING MATTERS continued

The criteria adopted by the Executive Committee when awarding the title of Scottish Correspondence Chess Master to members of the S.C.C.A. is shown below.

The title of Master will be awarded to any individual who has three outright wins in the Scottish Championship without limit of time, or alternatively achieves three norms within six years.

One norm will be achieved by recognised players in each of the following circumstances subject to the qualification that not more than two norms can be gained in any one year.

- (a) A Scottish Correspondence Chess Association grading of 213 or above, providing at least eight results have been recorded in the current year,
or
- (b) an outright win in the Scottish Correspondence Chess Association Championship or joint winners scoring 75% of the total points available,
or
- (c) a grading of 213 achieved in any one tournament, providing at least eight results are recorded and, the tournament is approved and recognised as being of sufficient strength by the Executive Committee of the Association.

HOW IS YOUR GRADING CALCULATED?

The present system is substantially the same as that devised, refined, and used by my predecessor, Walter Munn. The following is a succinct explanation.

There are three types of grading: - 1. Estimated 2. Provisional 3. Recognised.

Estimated: Less than 8 results

Provisional: Any 8 or more results. An asterisk is added after 8 results against recognised or provisionally graded players

Recognised: 20 results against Recognised or Provisionally graded players.

NOTE:

Only Recognised and Provisionally graded players with asterisk are included in the published main grading list. Supplementary list qualifications are:-

20 results Against any opponents

8 “ “ recognised or provisionally graded players

SYSTEM

- For a win - score opponents grade plus 50 points
- “ a draw - score opponents grade
- “ a lose - score opponents grade minus 50 points

Where an opponents grades are more than 40 points apart treat as though exactly 40 points apart.

When twenty or more games are played in a season the new grade is the average for those games. If less than 20 games played sufficient scores are added using the most recent results from previous year or years to bring total up to 20. If past season has to be included the average grade for that season is used.

Scotland v Sweden 1979/80 Bd. 2Ruy Lopez (E 46c)White : J.N.MacNeil (Scotland)Black : R.G.Hagelin (Sweden)

1	P-K4	P-K4
2	N-KB3	N-QB3
3	B-N5	P-QR3
4	B-R4	N-B3
5	O-O	B-K2
6	R-K1	P-QN4
7	B-N3	P-Q3
8	P-B3	O-O
9	P-KR3	N-QR4
10	B-B2	P-B4
11	P-Q4	Q-B2
12	N(1)-Q2	N-B3
13	P-Q5	N-Q1
14	P-QR4	R-QN1
15	P-QN4	P-B5

This move is considered dubious by Geller who suggests 15 N-N2

16	N-B1	N-K1
17	PxP	PxP
18	N(3)-R2	P-B3

Improving on the move 18 P-B4 in Geller - Smyslov, Palma 1970.

19	P-N4	N-B2
20	N-N3	P-KN3



21 Q-B3
A hard move to find

21		N-N2
22	B-K3	B-Q2

23	R-R7	R-N2
24	R-R6	K-R1

Black's K-side is like a coiled spring; he tries to play for P-B4, but as this will liberate the Lopez bishop, White's worst piece, he probably should mark time for eighteen months !

25	Q-N2	R-KN1
26	K-R1	Q-B1
27	R(K1)-R1	Q-B2
28	P-B4	

To make progress, White is willing to let Black have some squares in the centre.

28		P-B4
----	--	------

A bold move !

29	KPxBP	NPxBP
30	Q-Q2	B-R5

If instead Black takes twice on N5, White would then have Q-R2.

31	NxBP	BxN
32	PxB	N-R4
33	N-N4	

Has Black any play ?! After a fortnights thought, he decided against 33 N-N6ch

33		B-N6
34	PxP	NxP
35	B-Q4	Q-K2
36	P-B6	

Givingback the pawn forestalls Q-R5 and activates White's Lopez bishop !

36		NxBP
37	N-R6	N-R4
38	R-R8	

If 38 NxR? Q-N5 and Black would win.

38		R-KB8
39	N-B5	Q-B3
40	RxRch	QxR
41	Q-R6	Resigns

If 41 Q-K1 then 42 QxN QxQ 43 R-R8ch. Notes by John MacNeil (John's other win was in Bulletin No4)

S.C.C.A. Candidates 1980/81

Nimzo-Indian Defence (D 47c)

White : S.R.Gillam

Black : G.M.Anderson

- 1 P-Q4 N-KB3
- 2 P-QB4 P-K3
- 3 N-QB3 B-N5
- 4 P-K3 P-QN3
- 5 N-K2 B-R3
- 6 N-N3 BxN
- 7 PxB P-Q4
- 8 Q-B3 0-0
- 9 PxP QxP
- 10 P-K4 Q-N2
- 11 B-K2 BxB
- 12 QxB P-B4
- 13 B-N5 !?

Craig Pritchett's recent Batsford book on the Nimzo-Indian only mentions 13 0-0, quoting Lombard - Larsen, Biel 1976 which went 13... Q-R3 14 QxQ NxQ 15 B-R3 KR-B1 16 QR-B1 R-B2 and Black has a comfortable position.



- 13 KN-Q2 ?!
- Not 13 ... Q-R3 14 QxQ NxQ 15 BxN PxB when 16 N-R5 gives White a clear 'plus'. Black should develop with 13 ... QN-Q2.
- 14 0-0 Q-R3 ?!
- 15 Q-N4 ! K-R1
- 16 N-R5 R-N1
- White's threat was B-B6, mating.
- 17 Q-B3 ! Q-N2
- If 17 ... P-B3 18 B-K5 wins the exchange.

- 18 QxP QxP
- 19 QR-K1 Q-Q4 !

The best square for the Queen. If 19 ...Q-B4 20 QxQ PxQ 21 R-K7 with a good ending. Or 19 ... Q-N5 20 RxP! QxB 21 R-K8 N-KB3 22 NxN PxN 23 RxRch QxR 24 QxBPch Q-N2 25 Q-B3 with a winning material advantage.

20 RxP ! PxP ?

Better is 20 ... N-QB3 with chances of an ending only one pawn down. 20 ... QxB would fail to 21 R-K8 as in the previous note. Or 20 ... N-B1 21 B-B6 ! NxR 22 NxP winning the Queen because of the discovered check.

- 21 N-B6 ! NxN
- 22 BxN Q-Q2 ?
- If 22 ... PxB 23 QxBPch R-N2 24 R-K8ch wins. Better is 22 ... N-B3 when White wins only the Queen for Rook and minor place by 23 BxPch and after RxB 24 R-K8ch RxR 25 QxQ
- 23 BxPch
- Black Resigned, because the conditional continuation 23 ... RxB 24 R-K8ch QxR 25 QxQch R-N1 26 Q-K5ch R-N2 27 Q-K4 leaves White with Queen and Pawn for Rook.

Notes by Simon Gillam.

Scottish Correspondence Championship 1978/79

French Defence (E 09c)

White : R.W.M.Baxter

Black : I.S.Campbell

- 1 P-K4 P-K3
- 2 P-Q4 P-Q4
- 3 N-QB3 B-N5
- 4 P-K5 P-QB4
- 5 P-QR3 BxNch
- 6 PxB N-K2
- 7 Q-N4 Q-B2
- 8 QxNP R-N1
- 9 QxRP PxP
- 10 N-K2 QN-B3
- 11 P-KB4 B-Q2
- 12 Q-Q3 PxP

R.W.M.Baxter - I.S.Campbell continued

13 N-N3 0-0-0
 14 B-K2 N-B4
 15 NxN PxN
 16 0-0 P-Q5
 17 R-N1 B-K3
 18 B-B3 B-R7
 19 R-N5 ?

This is a terrible mistake. Unless White is willing to play QxBPch, which I felt was too risky, the only alternative is R-R1

19 P-R3
 20 R-B5 Q-N3
 21 RxNch PxR
 22 P-QR4 B-K3
 23 P-R5

Desperation, Black was threatening P-B4 -B5

23 Q-N4

The Queen exchange is tempting but QxP might have been better.



24 QxQ BPxQ
 25 B-R3 B-Q4
 26 B-Q6 BxB
 27 RxB RxB ?

Black fears the loss of his QP by 28 R-Q3 and 29 RxQP, but his exchange plus is worth more than this. Now his win is far from easy.

28 PxR R-Q1
 29 K-B2 RxP
 30 K-K2

Preventing an immediate win for Black by P-Q6.

30 K-B2
 31 K-Q3 K-B3
 32 R-R3 K-B4
 33 R-R5 K-N5
 34 RxP K-R6
 35 RxBP P-N5
 36 R-K7

I had been intending 36 R-QN7 but this loses to R-KN3 eg. 37 P-N3 R-R3 38 KxP RxP 39 K-B4 RxP 40 RxP R-QN7

36 P-N6
 37 PxP R-QB3
 38 P-KN4 P-B7
 39 R-K1 KxP
 40 P-N5 R-B1
 41 R-KN1 P-B8 = Q
 42 RxQ RxR
 43 KxP R-KR8
 44 P-B5 RxP
 45 P-B6 R-KB7
 46 K-K5 K-B5
 47 P-N6 R-K7ch
 48 K-B5

I had already posted this move when I saw some analysis by Keres of an almost identical position in a game between Tarrasch and Janowski in 1907. Keres gave the winning move as K-Q6 and showed that K-B5 only led to a draw. This gave me an uncomfortable time until I found that minor differences in the positions were significant. In the earlier game, there were no QR pawns and the rook was checking on K8 rather than K7. If Black's rook was on K8, my 50th move would not win.

48 K-Q4
 49 P-N7 R-B7ch
 50 K-N4 Resigns

Notes based on those provided by Raymond Baxter.

S.C.C.A. Quartet (Postal Shield) 80/81

French Defence (E 02b)

White : L.Lane

Black : R. Beacon

1 P-K4 P-K3
2 P-Q4 P-Q4
3 N-Q2 N-KB3
4 P-K5 N-K5

I've never seen this before, but I only read M.C.O. !

5 B-Q3 NxN
6 BxN P-QB4
7 P-QB3 Q-N3
8 Q-B2 N-QB3
9 PxP BxP
10 B-KB4

The only way to protect both KP and KBP.

10 B-Q2
11 N-B3 P-Q5

A bit premature.

12 0-0 PxP
13 PxP N-K2
14 QR-QN1 Q-B2
15 KR-K1 N-Q4
16 B-Q2

Necessary to prevent 16 ... NxP !

16 P-KN3
17 P-B4 N-N3
18 N-N5 B-R5
19 Q-B1 R-Q1 ?

I hope this ? is not unfair to my opponent but I base it on two counts :

- (a) 19 ... QR-B1 would give his many tactical chances as later moves prove
- (b) my Q-side was under pressure. but now I seem to gain a few moves.



20 B-B1 B-K2

A strange position !

21 B-R5 Q-B4
22 B-N4 Q-B2
23 BxB QxB

If 23 ...KxB to allow freedom for the KR then 24 RxN! followed by Q-R3ch wins

24 N-K4

Threatening to end the game with N-B6ch.

24 0-0
25 N-B6ch K-N2
26 Q-N5 !

The threats accumulate.

26 N-B1
27 R-K3 R-R1

Better would be P-R3

28 N-R5ch K-N1
29 Q-R6 P-B4

Of course not PxN? because 30 R-N3ch.

30 PxP ep Q-KB2
31 Q-N7ch

And as 31 ...QxQ 32 PxQ PxN 33 PxR(Q) KxQ leaves White with a completely won ending,

Black Resigned

Notes by L.Lane

The next game is a fine example of the quality of play of British Postal Champion, Alan Stewart. The unfortunate victim is our own Philip Guilian, who has very sportingly sent us the game and some interesting notes on his experience ! Better luck next time !

Please send games, preferably annotated to our now Games Editor
C.Richard Beecham, 28 Morris Road,
Prestwick, Ayrshire KA9 2JW.
Our thanks are due to George Livie for his contributions in our first six Bulletins.

B.P.C.F. Championship

French Defence (E 06a)

White : A.M.Stewart

Black : P.M.Giulian

- 1 P-K4 P-K3
- 2 P-Q4 P-Q4
- 3 N-QB3 B-N5
- 4 P-QR3

A very sharp and under-estimated line.

Of course 4 P-K5 is the usual move here.

- 4 BxNch
- 5 PxB PxP
- 6 Q-N4 N-KB3
- 7 QxNP R-N1
- 8 Q-R6 R-N3

The normal continuation is 8 ...P-B4, but I had my own idea !

- 9 Q-Q2 !

The usual 9 Q-K3 leaves the queen vulnerable to attack by the manoeuvre N-B3, N-K2, N-B4 eg. Lovesey - Giulian 1979 which continued 9 Q-K3 N-B3 10 B-N2 N-K2 11 N-K2 N-B4 12 Q-Q2 when Black had a strong attack with 12 ... P-K6 !

- 9 N-B3
- 10 B-N2 N-K2
- 11 N-K2 N-B4 ?!

This in my own idea, with P-K6 in mind but after this game, perhaps it should be followed by a ?

- 12 P-N3 !

Parrying Black's threats, preparing to support N-B4, aiming to develop the White bishop and breaking the Black pressure on the NP. Instead McRoberts - Giulian S.C.C.A. Premier 79/80 continued 12 P-QB4 P-K6! 13 PxP N-K5 14 Q-Q3 Q-R5 15 P-N3 N(4)xP 16 NxN PxN 17 PxN QxR and Black eventually won the game.

- 12 N-Q4
- I didn't want to allow N-B4 chasing my R.
- 13 N-B4 NxN

- 14 QxN B-Q2

- 15 0-0-0

Of course not 15 QxKP B-B3,

- 15 N-Q3



Only now did I begin to realise how bad my position was. I wanted to play 15 ...B-B3 but 16 P-Q5 ! looked too strong. It is not easy to defend the weak KP, but perhaps 15 ...Q-N4 is better.

- 16 P-B4 P-KB4
- 17 P-B5 N-B2
- 18 P-KR4 R-N5

Black needs to Castle but the Queen can't move because of the QBP. 18 ... B-B3 would still be met by 19 P-Q5.

- 19 Q-K3 Q-K2
- 20 B-R3 R-N3
- 21 P-Q5 !

Breaking the position open with my King still in the centre of the board.

- 21 PxP
- 22 RxP N-R3

Originally, I thought 22 ... 0-0-0 could be played but now I realised White would win with 23 RxP!

- 23 KR-Q1 0-0-0

At last ! - but too late. I couldn't afford to move my bishop because my King would be left in the centre for ever. I hoped to last for a while after 24 P-B6 RxBP 25 QxRP R-R3 ! but

- 24 P-KB3 !!

I am pinned in all directions.

A.M.Stewart - P.M.Giulian continued

24 R-K3
25 PxP N-N5
Hoping to prolong the agony and play on a pawn down.

26 Q-B4 !! RxP
Loses. but what else ?
27 RxB !! Resigns

All moves are now hopeless.
(a) 27 ... RxR 28 QxP wins quickly eg.
28 ... R-K8 29 QxN ! RxRch 30 QxR
(b) 27 ... QxR 28 RxQ RxQ 29 RxRch wins
(c) 27 ... RxQ 28 RxRch !

Undoubtably, the worst mauling I have had at Postal chess. I feel I should perhaps have included a few question marks, but after the game, I find it difficult to identify reasonable alternatives. Probably, my whole opening strategy was unsound. Anyway. I am sure readers will find the game interesting, even if rather embarrassing to me !

Notes (and confessions !) -Phil Giulian.



Now we must publish one of Phil's games where he demonstrates how well he can play

B.P.C.F.Candidates 1980/81

English Opening (R 33d)

White : P.M.Giulian

Black : C.Kelly

1 P-QB4 P-K4
2 N-QB3 N-KB3
3 N-B3 N-B3
4 P-KN3 B-B4

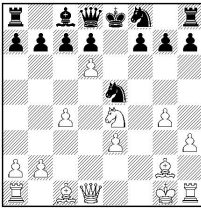
A fairly uncommon but playable line.
Alternatives Include P-KN3, N-Q5 & B-N5
5 B-N2

Perhaps 5 P-Q3 is More accurate. Very interesting is 5 NxP BxPch 6 KxB NxN
7 P-K4 P-B4 8 P-Q3 P-Q3 9 P-KR3 0-0

5 P-K5 !?
Supposed to be bad, but I'm not so sure.
6 N-KN5
Allowing the " Primary School " trap, but White obtains compensation.
6 BxP ch
7 KxB N-KN5 ch
8 K-N1
If 8 K-K1 QxN 9 NxP Q-K4 10 P-K3 P-Q3
11 N-B2 with slight advantage to White.
8 QxN
9 NxP Q-K2 ?!
I feel 9 ...Q-N3 to probably better.
10 P-KR3 N-R3 ?



11 P-Q3 N-B4 ?
The start of an amazing knight chase. Much better is 11 ... P-Q3. Apparently Black has a reasonable position, but it is remarkable how quickly it goes downhill.
12 P-KN4 ! N(B4)-Q5
If 12 ... N-R3, White would have the possible future threat of BxN. 12 ...N-R5 would lose a piece to B-N5. 12 ...N-Q3 would be met by 13 N-B3 and then N-Q5, leaving Black with the problem of his QB.
13 P-K3 N-K3
14 P-Q4 N-B1
15 P-Q5 N-K4
Black's sixth knight move in a row !
16 P-Q6 Q-Q1
It is interesting to compare this position with the one five moves earlier, yet White has not moved a piece since.



- 17 Q-Q5 N(1)-N3
- 18 PxP QxP
- 19 N-Q6 ch K-K2
- 20 N-B5 ch K-Q1
- 21 P-N3 P-QR4
- 22 B-R3 P-R5

23 Q-Q4
 Defends the rook, threatens B-Q6. Now if
 Black plays 23 ...PxP 24 PxP threatens
 B-K7ch

23 R-R3 ?
 If 23 ...Q-R4? 24 B-B5 threatens B-N6ch.

24 B-Q6 Q-N3

25 P-B5

Of course, 25 BxN would have won a piece.

25 Q-R2

26 P-QN4 P-B3

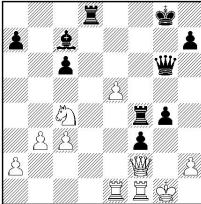
27 P-QN5 R-R4

28 B-B7 ch ! Resigns

Notes again by Phil Giulian

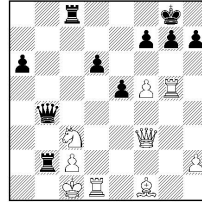
International Winning Combinations (compiled by John Hawkes)

Namyslo - St.Busemann (Bdf 77/80)



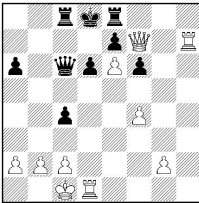
- 1 ...g3 ! 2 hxg3 Rd2!! 3 Nxd2 Bb6 wins
- 2 Qxg3 ? Rg4 3 Rf3 Kh8 ! etc.

Szilagy- Trembacz (Hung 75/6)



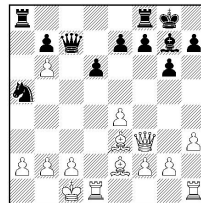
- 1 Bc4 !! Rxc4 ? 2 Rdg1 Rxc3 3 Qa8ch wins
- 2g6 3 fxg6 hxg6 4 Rg6+

Pjaren - Jaworski (Baltic Team Champ.)



- 1 Rxd6ch ! Qxd6 2 Qxe8ch wins

Stavenhagen- Kherek (1979)



- 1 ... Nb3ch!! 2 axb3 Qc3 3 bxc3 Bxc3 etc.
- 2 Kb1 Rxa2 ! 3 Kxa2 Qxc2 +
- 3 c3 Rxb2 +

INTERNATIONALS

The following Internationals are in progress or are about to start shortly.

SCOTLAND	SWEDEN	Sc	Sw	B	Sc	Ic	SCOTLAND	ICELAND
A.P. BORWELL	G. CARLBERG			1			J.N. MacNEIL	F. HERLUFSON
J.N. MacNEILL	R.G. HAGELIN	2	0	2	1	0	A.P. BORWELL	B. MAGNUSSON
H.D. HOLMES	A. CARLSSON			3			H.D. HOLMES	J. TORFASON
I.S. CAMPBELL	L. LIVBRANDT	10	01	4	½½	½½	C.R. BEECHAM	J.T. THOR
M. MELDRUM	J. COLLETT	2	0	5			C.J. MORRISON	H. KRISTJANSSON
D. McKERRACHER	K. HAGGLOF			6	01	10	I.S. CAMPBELL	A. STEFANSSON
C.R. BEECHAM	A. CIL	½½	½½	7	10	01	D. McKERRACHER	G. GUNNLAUGSSON
D. JENKINS	K. HAGLUND	1	0	8	0	2	A.T. HISLOP	T. EGILSSON
Dr.K.W.C.STEWART	B. ANDERSSON	0	1	9			M. MELDRUM	M. THORSTEINSSON
C.J. MORRISON	S. OLSO			10	0	2	Dr.K.W.C.STEWART	H. HAUJSSON
R.W.M.BAXTER	M. MALMBERS	2	0	11			A.G. KIRKLAND	G. THORDARSON
Dr.V.A. NYE	O. NYLEN	1	1	12	½½	½½	D. JENKINS	H. OLAFSSON
D. BRYSON	C. GRUVAEUS	2	0	13	0	2	W.G. BRADY	G. FINNLAUGSSON
D. KILGOUR	N. STENOVIST	½	½	14	0	2	A. McFADYEN	J. JOHANNESON
W.G. BRADY	G. GUSTAFSSON	½	½	15	2	0	G.M. ANDERSON	J. JOHANNSSON
A. McFADYEN	A. WENGHOLM			16	0	2	W.S. ROACH	T. THORDARSON
J.A. CLAYTON	G. CARLSSON			17			J. GRACIE	T. SAEMUNDSSON
I. MACKINTOSH	B. SKOGSBERG	½	½	18			PROF.G.H.BIRD	G. FINNSSON
J. GRACIE	H. WADEMARK			19			D. KILGOUR	S. THORVALDSSON
G.W.G.LIVIE	S. BERNHARDSSON	½	½	20	½½	½½	R. LAWSON	E. KARLSSON
R.M. INNES	H.A. CEDERSUND			21	0	2	A.H. KERR	B.T. KARLSSON
I.A. MARKS	E. BENGTSSON	2	0	22	2	0	R.M. INNES	B. BJORNSSON
R. INGLIS	L. ESZIK			23	½	½	I. MACKINTOSH	T. SIGURDSSON
J. SEYFRIED	K. ANDERSSON	½½	½½	24	10	01	B.J. MARTIN	S.O. HANNESSON
G. CHANDLER	S. NILSSON	0	2	25	0	2	J. SEYFRIED	A. KARLSSON
☞	☞						☞	☞
		18	10		11½	20½		

SCOTLAND	FINLAND 'A'	SA	FA	B	SB	FB	SCOTLAND *B*	FINLAND 'B'
D. McKERRACHER	M. PIUVA	½½	½½	1			R.M. INNES	P. KAUPPALA
D. JENKINS	C.E.JOHANSSON	0	1	2	0	1	G.M. ANDERSON	J. MYRY
C.R. BEECHAM	R. KOTKA	1½	½	3			G. HAMILTON	A.NOKSO-KOIVISTO
A.P. BORWELL	G. LAGLAND	1	0	4			D.J. SAVAGE	H. TANNINEN
P. GIULIAN	K. KAUNONEN	½½	½½	5	0½	1½	J.W. VERNON	G. PLANK
C.J. MORRISON	A. RUUTTULA			6			MRS.M.McGEE	O. RAJALA
I.S. CAMPBELL	S. RATY			7			S.D. YOUNG	L. GRONHOLM
A.G. KIRKLAND	E. VITTO			8	½0	½1	D. CRICHTON	P. HIETALA
W.P. WATSON	R. WIKMAN	1	0	9	10	01	A.J.McCLELLAND	A. HARJV
G.W.G.LIVIE	A. FROBERG	½1	½0	10	0	2	M.A.SWYSTUN	M. LUODNPAA
W.S. ROACH	J.PIHLAJINEN	0½	1½	11			A.H. KERR	A. BLOMBERG
W.G. BRADY	K. TIMPERI	0	1	12	½	½	M. YIANNI	O. PUURUNEN
J. SEYFRIED	P. KLEMETTINEN	½0	½1	13			D.G.McROBERTS	E. SOININEN
PROF.G.H.BIRD	V.M. HUUSKONEN	0	1	14	1	0	R.A.McBRAYNE	P. ANTTILA
G. PYRICH	P. KOSKINEN	0	1	15			A. GLASS	P. KUUSELA
I. MACKINTOSH	E. TEITTINEN	0	1	16	½½	½½	J.P.L. LUMSDEN	E. MAKINEN
J. GRACIE	T. MYRY	0	2	17	2	0	R. JACKSON	O. HOKKANEN
A. PETRIE	R. MOLARIUS	2	0	18	1	1	J. WATSON Jnr	S. LAINE
B.J. MARTIN	H. SABEL	0	2	19			M.E.McGEE	K. PARKKARI
A. McFADYEN	A. BJORKOVIST	0	2	20			I.W.S. MITCHELL	J. LAINE
R. INGLIS	E. JOKINEN	½	½	21	00	11	K. WARREN	J. MANTYNIEMI
K. GORDON	V. VARJUS	½	½	22			M. DYER	J.J. PIHLAJAMAKI
R. DICKSON	J. PALENIUS			23	½	1½	J.W. McLav	K. OSTERBERG
G. CHANDLER	R. SEPPALA	0	2	24	0	2	P.D. HAMPTON	R. EKMARK
I.A. MARKS	O. HALME	0½	1½	25			T. PATERSON	J. HEINONEN
☞	☞						☞	☞
		11½	21½		8	15		

INTERNATIONALS

SCOTLAND	AUSTRIA	Sc	A	Bd	Sc	N	SCOTLAND	NORWAY
K.B.McALPINE(M)	O. KALLINGER			1	0	1	D.M.JENKINS	ØYSTEIN SANDE
D.Y.McKERRACHER	H.E. UDE			2			D. BRYSON	ODD LIE
I.S. CAMPBELL	H. NIEDERMAYR	0	2	3			P. GIULIAN	DAS ORSETH
H.D. HOLMES	P. ROTH	0	2	4			A.P.BORWELL	TROND A.NILSEN
M. MELDRUM	E.SPITZENBERGER			5			DR.K.W.C.	ØYVIND KVAMME
D. KILGOUR	A. KRANZL	½1	0½	6			C.R.BEECHAM	OLAF SKALIEN
DR.K.W.C.STEWART	DR.F.THANNHAUSSER	10	01	7	2	0	D. KILGOUR	KARE ORMHAUG
A.G.KIRKLAND	A. HAMEDINGER			8	0	2	I.S. CAMPBELL	EIVIND KJAERSTAD
D. JENKINS	Z. SCHNEIDER			9			A.G. KIRKLAND	VIDAR TAKSRUND
G.W.G.LIVIE	Dr.H.TARNOWIECKI	10	0 1	10			A.T. HISLOP	ROLF RØSTAD
A.McFADYEN	M. HENNINGS	0	2	11	½0	½1	W.S. ROACH	OLE M.SKOCHEIM
W.S.ROACH	C. NICKL	10	01	12	0	1	M. MELDRUM	ARNOLD ANDREASSEN
W.G.BRADY	K.HORA	1	0	13			G. PYRICH	RONALD BERTHELSEN
J.A. CLAYTON	DIR.L.PATHEISKY	0	2	14	0	2	K. BEER	EDV.MATHISEN
S.D. YOUNG	PROF.B. KLEIN	½	½	15	0	2	A. PETRIE	CLAUS NITTER
I. MACKINTOSH	G. SCHNAUBELT	½	½	16			PROF.G.H.BIRD	PETTER STIGAR
I.A. MARKS	J. HAUBENHOFER	1	0	17	10	01	I. MACKINTOSH	OLAF EIDE
A.H. KERR	G. FRANZL			18	1	0	R. INGLIS	SVEN NORDAL
R. KILPATRICK	Z. MICHALEK	½½	½½	19			R. DICKSON	ARILD LARSEN
R. INGLIS	G. KOROSTENSKY	10	01	20	½	½	G.M. ANDERSON	ANKER AASUM
R.M. INNES	O. LANG			21			I. MARKS	ROLF BJERKHAUG
R. DICKSON	W. LANG	½0	½1	22			D.J. SAVAGE	JANERIK LUND
J. SEYFRIED	W. GROIS	½	1½	23			A.J. McCLELLAND	SKJALG RAFNUNG
G. CHANDLER	J. PARZER	1	0	24			A.H. KERR	JAN ARNE MUNKEBY
J.W. VERNON	O. SUSTER	½½	½½	25			G. HAMILTON	ARVE JOHANSEN
M.A. SWYSTUN	W. DETELA	½½	½½	26	5	11		
D. CRICHTON	I.W. HAYDVOGEL	1½	0½	27				♔
MRS.M.McGEE	DR. R. TIROCH			28				
J.P.L. LUMSDEN	P. PRZYBYLO	½0	1½	29			♔	♔
W.F. SWIATEK	H. THURNER			30				
♔	♔	15½	19½					

SCOTLAND teams selected for matches due to

SCOTLAND	CANADA	Bd	Ca	Bd
T.J.CRAIG	A.J.UGGE			1
D.BRYSON	R.SIEMMS			2
D.A.KILGOUR	O.HELLSTON			3
D.M.JENKINS	J.ARMSTRONG			4
P.M.GIULIAN	P.McHOULL			5
C.R.BEECHAM	J.F.CLEEVE			6
G.D.PYRICH	M.ZARICHUCK			7
K.BEER	W.OAKLER			8
C.BOYLE	J.DEIDUN Snr			9
T.L.MILLIGAN	W.P.TAYLOR			10
W.G.BRADY	G.LABELLE			11
I.MacKINTOSH	L.DES.ORMEAUX			12
G.M.ANDERSON	M.ROBIDOUX	1	0	13
I.A.MARKS	M.S.MARCHANT			14
PROF.G.H.BIRD	R.NELSON			15
G.SCHOLES	D.DOUCETTE			16
W.S.ROACH	R.SELLOY			17
A.PETRIE	P.JURGENS			18
R.DICKSON	M.GIROUX			19
M.YIANNI	D.NYBERG			20
		1	0	

Bd	Scotland v USA	Scotland v France
1	R.W.M. BAXTER	A.P. BORWELL
2	D. A. KILGOUR	D.A. KILGOUR
3	DR.K.W.C.STEWART	D.M. BRYSON
4	I.S. CAMPBELL	R.W.M. BAXTER
5	S.R. GILLAM	C.R. BEECHAM
6	I. A. MARKS	P. M. GIULIAN
7	A.J. McCLELLAND	I.S. CAMPBELL
8	J. WILLIAMS	A.T. HISLOP
9	G.M. ANDERSON	T.J. CRAIG
10	G.D. PYRICH	G.W.G. LIVIE
11	A.C. PETRIE	I.A. MARKS
12	G. SCHOLES	A.J. McCLELLAND
13	D.J. SAVAGE	S.R. GILLAM
14	MRS. E. HARTFORD	J. WILLIAMS
15	R. INGLIS	G.M. ANDERSON
16	D.M. LIVIE	G. D. PYRICH
17	R. A. McBRAYNE	A. C. PETRIE
18	K. WARREN	G. SCHOLES
19	I.W.S. MITCHELL	D.J. SAVAGE
20	M. DYER	R. INGLIS
21	J. SHARP	R.A. McBRAYNE
22	J.P.E. JACK	D. CRICHTON
23	J.M. MacARTHER	K. WARREN
24	B. GOODWIN	A.M. ANDERSON
25	J. McTAGGART	R. MURPHY

INTERNATIONALS

Bd	Sc	Net	SCOTLAND	NETHERLANDS	Bd	Sc	Net	SCOTLAND	NETHERLANDS
1	1	0	D BRYSON	P ROOS	31			I MARSHALL	D J VEEGENS
2			A P BORWELL	W VELKER	32			D J SAVAGE	C DULLAERT
3			D A KILGOUR	F J F SCHREEN	33			R DICKSON	M ESCHER
4			T CRAIG	H J de KLEINJENEN	34			R INGLIS	D A ROZIJN
5			D JENKINS	Drs Th G SCHUT	35			A J McCLELLAND	H KAMPS
6			Dr K W C STEWART	J KUIPER	36			A BLACK	D W VERMAAS
7			M MELDRUM	W PEET	37			D A HUGHSON	P J BORN
8	0	2	C R BEECHAM	H J MOSTERT	38			C J DOWLE	A H BOSS
9			J SEYFRIED	A N v d BERG	39			A GLASS	T de VOS
10			P GIULIAN	J v d HORST	40			R A MacBRAYNE	H LAMEIN
11	0	2	Dr V A NYE	Ab DEISZ	41	1	0	D CRICHTON	W J LECLUSE
12			G W G LIVIE	J BORST	42	0	1	J W VERNON	C W WESTERDUIN
13			A T HISLOP	G WELLING	43			S D YOUNG	E J INJA
14			C BOYLE	P MATHIEU	44			R INNES	J van SINTRUYEN
15			R LAWSON	S GROOT	45			J MacARTHUR	F HERBSCHLEB
16			W G BRADY	P H W v d HORST	46	1	0	K GORDON	J van der WERF
17			T L MILLIGAN	A v MEGGELEN	47			Mrs M McGEE	C BRINKHUIS
18			A G KIRKLAND	K RAIJMAEKERS	48			D C McROBERTS	J HAFKENSCHIEDT
19			K BEER	G KAMMINGA	49			R JACKSON	J F J VIIVERS
20			G PYRICH	J H L KERSTEN	50			K WARREN	G VERBANCK
21			G M ANDERSON	J JANZEN	51			J MERRIFIELD	K v d LEE
22			G SHOLES	A KOFFEMAN	52			J SHARP	G OORBALS
23			D BENNET	R A KUNNF	53			T PATERSON	A BREIDENBACH
24			J McCORMACK	P E VOGEL	54			M DYER	H BIENENBROODSPORT
25			A PETRIE	M A C KOEVOETS	55	0	2	A PEARCEY	P SHALKIJK
26	0	1	I MARKS	G den HEIJER	56			J W McLAY	J de NEEF
27	0	2	Prof G H BIRD	N A OUWERKERK	57			Mir W E BRUGES	W GERRITZEN
28			J R GRACIE	H STEINMAN	58			Mrs E HARTFORD	T TIETEMA
29			M YIANNI	G TIGCHELAAR	59			J BISLAND	J G KOEK
30			B GOODWIN	D W BOERWINKEL	60			Mrs J SHARP	R Y JANSEN

The following letter was received from the I.C.C.F. President in response to our letter as published on page 3 of News Bulletin No . 5

" I readily agree to your wish that your Federation's application for membership of I.C.C.F. should be debated once more at the I.C.C.F. Congress in London. I am pleased that you will be participating in the conference and look forward to the opportunity of making your personal acquaintance and of having private discussions. The application for admission will be debated on Tuesday 15th September. The obstacle preventing your Federation's membership of I.C.C.F. is the provision in 3a of the Statutes, whereby only one Federation from each Country can be a member of I.C.C.F.

Scotland is not an independent State but a part of Great Britain. The B.P.C.F. is the I.C.C.F. member for Great Britain. If your Federation belongs corporately to B.P.C.F. then your Federation is thereby also a member (corporately through B.P.C.F.) of I.C.C.F.

I do not contradict your assertion that Scotland is a Country, with its own history and culture. Within West Germany, this is also true, for example, Bavaria and Lower Saxony. Within the U.S.S.R., this is also true, for example, Latvia, Lithuania and Estonia.

Membership applications from Bavaria, Lower Saxony, Latvia, Lithuania and Estonia could not however be accepted by I.C.C.F., since these 'lands' are part of the Federal Republic of West Germany and of U.S.S.R. There are many other similar examples. I hope these notes will shed light upon the problem surrounding this whole matter.

I should mention in particular that I.C.C.F. values very highly the work of your Federation and also understands your desire to be a member of I.C.C.F. and I.C.C.F. very much regrets it has not yet been possible to realise this desire.

Our reply to the I.C.C.F. President's letter was as follows

Thank you for your kind letter of 3rd June 1981.

In connection with your second, third and fourth paragraphs, Scotland of course has always been a distinct Country according to all non-political definitions. Even politically there are very special provisions in Scotland which do not apply elsewhere in the UK, eg. we have our own 'Secretary of State for Scotland'.

Although your comments about parts of the USSR, Germany, etc, of course are appreciated, there is not really any practical similarity between our application and that which potentially might come from such parts because:

1. none of them have obtained recognition by FIDE, or for that matter any other major sporting organisations, in the way that Scotland has been recognised as a Country by World bodies for many decades.
2. applications for the separate affiliation of such parts are not likely to be supported by USSR, Germany, etc.

In any event, surely ICCF should look at each application on its merits and, particularly, should reflect some consistency with the interpretations of other World bodies. Incidentally, Scotland's participation in the current World Telechess Olympiad, organised jointly by FIDE and ICCF, is an example of the anomalous position of ICCF in not accepting Scotland's affiliation application.

We are absolutely convinced that, with a little more flexibility of outlook, the 10-year problem of Scotland's affiliation to ICCF could be resolved. This would be in the best interests of postal chess players in this Country and in the further promotion of correspondence chess internationally. In our earlier letters we indicated that we were not unduly concerned about the question of voting rights but our players are adamant about their basic right to play postal chess for their own Country. We would much prefer full membership of ICCF in the same way as Scotland has with FIDE and other sporting and pastime World bodies, but we are not intransigent as to the precise form of affiliation, providing that it enables Scotland to participate in ICCF team events and that our players are able to represent their own Country in ICCF individual tournaments. For your information, our membership is approaching 300 and is increasing

Please try to give our situation your most earnest and serious consideration to find a speedy solution to resolve this long outstanding issue at this year's Congress. When we meet in September, I hope that you will have encouraging news about a solution which will be acceptable to the postal chess players of Scotland!

Internationals

In response to Tony McClelland's letter (Bulletin No.5) requesting an article of approximate strengths, of various ICCF classes and tournaments, etc, I feel the finger has been pointed at me in my capacity an International Secretary (retired) to respond.

Firstly, I shall outline the particular types of ICCF tournament available and then try to compare the various strengths to our grading system.

There are four types of ICCF tournament available; World Championships for Individuals and Teams (the SCCA are not eligible for team tournaments until members of ICCF), Promotion and Relegation tournaments in Classes, Cup Tournaments and, finally, Special Tournaments.

The World Championship for individuals comprises the Semi-final, the $\frac{3}{4}$ -final or Candidates Tournament and the Final. The World Championship final for individuals consists of between 13 to 17 players and is made up from the two previous World Champions, the 2nd, 3rd and 4th places in the previous final and also qualified players from the World Championship $\frac{3}{4}$ -final (Candidates' Tournament).

The World Championship for National teams or Olympiads is played in a three-year cycle and consists of a preliminary and final round.

continued on the next page

The second and most popular tournaments are Promotion and Relegation tournaments. These tournaments are played in 5 classes. Class III, II and I, Higher Class and, finally, Master Class. They are organised in two separate divisions/ sections; the World Tournaments and the European Tournaments. Class III is the weakest and is intended for players of lower grades on the SCCA list. A player can enter in Class III, II or I, but must win the section outright before promotion to the next class. Class I is therefore the highest class possible to enter. Upon winning a Class I section, promotion to the Higher Class is possible, and promotion to the Master Class is obtained by winning a Higher Class section. In exceptional cases however, very strong players who wish to play in the Higher or Master Class can gain direct entry, if their application and nomination is approved by their affiliated Associations Selection Committee.

In the Master Class World Tournaments, there are groups with 15 players and groups with 7 players; in all other classes the World Tournament groups have 7 players. In the European Tournaments all classes have tournament groups with 15 and 7 players. Each player plays one game simultaneously against each of the other players. Any player who gets less than 1/3 of the possible points is relegated to the next lower class. Simultaneous participation in promotion and relegation tournaments of different classes is not allowed.

The third type of tournament is the Cup Tournament (see Ian Marks article in News Bulletin No.3). The Cup tournaments are not divided into classes but are in 3 stages; Prelims, Intermediate and Final round. Each round lasts 2-2½ years; It is possible to enter more than one Preliminary round if required. Each stage has groups of players, between 7-11 in the Prelims, 9-13 in the Intermediate, and 9-15 in the Final round. Only the group winner is promoted to the next round.

The final type of tournaments are Special Tournaments, such as Memorial or Thematic Tournaments. The Memorial tournaments are by nomination or invitation only.

The Thematic tournaments are on a World basis and are in 5 player groups with double pairings. The thematic openings available total 34 in all, varying from Grob's Attack 1.7274, to the more sedate Breyer variation in the Ruy Lopez.

With regard to comparing the SCCA grading to ICCF classes, this is by no means easy. All I can do is base the following on personal experience. Take for instance the match against Finland, one would expect the Scottish team breakdown of strength to be Boards 1-6 Master Class, 7-12 Higher Class, 13-18 Class, I, 19-25 Class II, and 26-30 Class III in ICCF terms. This logic however is turned upside-down when Ian Marks opponent in the match v Sweden, E. Bengtsson, plays in a Master Class (by the way Ian won both games) and that is at Board 22 in a 25-board match!

Based on an 'average', I would suggest the following equivalents and that players could 'survive' in the classes suggested. Master Class 190+, Higher Class 176-189, Class I 151-175, Class II 131-150 and Class III 130 and below.

Countries such as Finland and Norway have gradings very similar to the ELO system; France also have a grading system. The other countries we are playing in International matches seem to base all their internal tournaments and Championships etc on the ICCF system of classes.

I would suggest that anyone interested in playing in any ICCF events contact BPCF through Reg Gillman, 85 Hillyard Road, London, W7 1BJ, who is their International Secretary and he will forward details. Remember also to write to George Livie, our Grading Officer; it could improve your Scottish grading if you obtain a good result!

Finally, I should like to wish David Kilgour every success in his new post as our International Yours etc. C. Richard Beecham,
International Secretary
(Retired)

Many thanks Richard for a very helpful article! Our thanks are also due to Richard for his tremendous efforts as International Secretary. (Editor)

It's unwise to pay too much

but it's unwise
to pay too little.
If you deal with
the lowest bidder,
it's well to add
something for
the risk you run.
And if you do that,
you will have
enough to pay for
something better.

John Ruskin

The next move is up to you!

get full value from

**General
Accident**

Honestly, it's the best policy.

♣ CHESS SUPPLIERS(Scotland)Ltd. ♣
205 Buchanan Street (1 up)
♣ GLASGOW. ♣

III NEW SHOWROOM! III

♠ Open Saturdays — 10am to 4 pm. ♠

♠ If you are unable to visit us ♠
we will be pleased to deal with
♠ your mail order requirements.....! ♠

SCOTTISH CHESS

ASSOCIATION. est1884

Details—Alan P. Borwell,
3 Broomhill Ave.,
Perth. tel.0738-22779

membership.. life £50,
patron £10, individual £5.

BRITISH POSTAL CHESS FEDERATION....

details.. B.P.C.F. Secretary,
R.Gillman,
85 Hillyard Road,
LONDON.

.....