

scottish
correspondence
chess
association

NEWS BULLETIN

Main Contents

Bryson wins Norwegian International
Scottish Centenary Cup - Semifinals
ICCF & SCCA Grading Lists
Endgame/Analysis Competitions
SCCA League 1987
Games Section (10 pages)

No. 23 April 1987

75p

		Tel. No.
President (& Editor, News Bulletin)	Alan P. Borwell 8 Wheatfield Avenue, Inchture, Perthshire PH14 9RY	0828-86556
Vice President	George W.G. Livie 34 Laggan Road, Newlands, Glasgow G44 2SY	041-637-0722
Secretary	Alan Hind 6 Struan Road, Cathcart, Glasgow G44 3AT	041-637-4102
Treasurer	George D. Pyrich 53 Dunnikier Road, Kirkcaldy KY1 2RL	0592-204133
Assistant Secretary	Douglas M. Livie 58 Elmore Avenue, Glasgow G44 5AY	041-637-1936
International Secretary	C. Richard Beecham 28 Morris Road, Prestwick KA9 2JW	0292-76984
Grading Officer	Tony J. McClelland 75 Kenilworth Rise, Dedridge, Livingstone, W Lothian	0506-417604
Other Executive Council Members	Philip M Giulian, 10 Broomfield Ave., Newton Mearns Allan T Hislop, 4 Ascog Street, Glasgow G42 7JN Graham Wood, 27 Malcolm Cres, Monifieth, DD5 4RT	041-639-1234 041-423-0318 0382-533625
Honorary Life Member	Bernard B. Partridge	
Life Members	D.G. Anderson, G.M. Anderson, K.D. Anderson, C.R. Beecham, P.G. Bennett, Prof. G.H. Bird, A.P. Borwell, D.M. Bryson, B.W. Chalmers, G.G. Chalmers, T.J. Craig, D. Crichton, D.H. Dempster, R. Dickson, J. Eadie, R. Gibson, P.M. Giulian, A.B. Glass, J.R. Gracie, Dr. M.C. Grayson, M.A. Hammett, Mrs. E. Hartford, A.T. Hislop, W.J. Hutchison, R.M. Innes, J.P.E. Jack, R. Jackson, D.M. Jenkins, D.A. Kilgour, D.M. Livie, G.W.G. Livie, J.P.L. Lumsden, K.B. McAlpine, J.M. MacArthur, A.J. McClelland, D. McCracken, A. McFadyen, Mrs. M. McGhee, M.E. McGhee, D. McKerracher, I. Mackintosh, T. McMorran, J.N. McNeill, D.G. McRoberts, J. McTaggart, I.A. Marks, I. Marshall, R. Mitchell, G.A. Morton, A.J. Muir, J.S. Murray, Dr. V.A. Nye, A.J. Norris, T. Paterson, A. Pearcey, V.A. Proudler, D.R. Reid, W.S. Roach, T. Russell, D.J. Savage, J. Seyfried, A.J. Shaw, G.R. Spratt, W.S. Smerdon, Dr. K.W.C. Stewart, M.A. Swystun, A. Taylor, T.A.H. Taylor, I. Thompson, J.M. Walker, W.P. Watson, T.S. Wickens, A. Wilson.	

INDEX OF CONTENTS

	Page(s)		Page(s)
Editorial/Secretarial Notes	1	Annotation for Improving Player	16/17
Championship/Candidates 1985/7	2	"Winning Continuations"	18
Championship/Candidates 1986/8	3	ICCF Gradings	19
Premiers, Majors & Quartets	4	SCCA Gradings	20/21
Openings/Handicap Tournaments	5	Games Section	22/31
SCCA League 1986/7	6/7	SCCA "Doughty Dozen" 1986	31
Scottish/Norwegian Internationals	8	International Notes	32
Scottish Centenary Cup Semi-finals	9	ICCF Ladies Olympiad	33
Competitions - Endgame/Analysis	10	ICCF Olympiad/European TT	34/35
Book Reviews	11	2nd North Atlantic TT	36/37
A Chat with Douglas Livie	12	Current Standings - ICCF Teams	38
"100 Club"	13	Readers' Letters	39
ICCF Thematic Tournaments/Entries	13	Winning Continuations Solutions	40
Treat Opening Books with Caution	14/15	Articles, Notes etc	40

EDITORIAL by Alan Borwell

The outstanding news item to report is Douglas Bryson's fine achievement in winning the Norwegian 40th Anniversary Tournament. The up to-date crosstable is on page 3, along with our own Scottish Centenary Tournament where Douglas is also doing exceptionally well, although several players have chances of winning the event.

This single issue of the News Bulletin contains the top 100 names in the ICCF grading list and also our own SCCA list for 1986. Consideration is being given to ways of integrating SCCA gradings with those of ICCF, which are based on a minimum of 24 games. Some adjustments may also be appropriate to Scottish Master title qualifications etc. Proposals will be considered at the ICCF Congress in the Netherlands in September for the use of ICCF gradings for determining title qualifications/norms for all future international events.

The Scottish Centenary Cup has now reached the Semi-Final stages with 29 players competing for places in the Final. A new Cup event will begin in the late summer this year and details with an entry form are enclosed for U.K. subscribers/members.

Our next issue will be produced in July and all contributions, including annotated games to Douglas Bryson, will be very much appreciated before the end of June.

SECRETARIAL NOTES by Alan Hind

Season 1986/87 has shown a slight increase in membership and quite a few members have joined following Gerald Bonner's plug for the Association in a recent Glasgow Evening Times. This leads me to make the following points:

- there is not much to encourage new members during the playing season and for that reason I am hoping to start a couple of new Openings Tournament sections and possibly some Quartets (see later)
- to really establish our membership we need to recruit from clubs throughout Scotland. So, if you are a member of an over-the-board club and you think you could encourage others to play correspondence chess, then go ahead! If you would like to do it on a more formal basis (please!!) we could offer what help we can to get you publicity material.

To formal business.....

The Association's Annual General Meeting will be held on Sunday 17th May 1987 at 4.00pm at Chess Suppliers (Scotland) Ltd., 15 Hope Street, Glasgow (opposite Central Station).

The Agenda will be:

- | | |
|-------------------------------|------------------------|
| 1. Minutes of previous AGM. | 5. Election of Auditor |
| 2. Secretary's Report | 6. Subscriptions |
| 3. Treasurer's Report | 7. Any Other Business |
| 4. Election of Office Bearers | |

If any member wishes anything specifically discussed at the AGM, could they please let me know in writing no later than 3 weeks before the meeting.

Subscription Rates 1986-87	Life Member - £50, Annual Member - £6 (incl. Bulletin) News Bulletin only - £3 per annum (4 issues incl postages)
-------------------------------	--

CHAMPIONSHIP 85-87

CONTROLLER - D. SAVAGE

Nº		1	2	3	4	5	6	7	8	9	10	11	Pts
1	A. Mc GOWAN	●	½	½	0	0	0	0	1	0	1	1	4
2	G. R. SPROTT	½	●	0	½	½	0	0	0	1	1		
3	A. T. HISLOP	½	1	●	0	0	½	½	1	1	½		
4	B. MARTIN	1	½	1	●	½	1	½	1	1	1	1	8½
5	T. S. WICKENS	1	½	1	½	●	1	1		1	1	1	
6	G. WOOD	1	1		0	0	●	1	0	1			
7	I.F. REEMAN	1	1	½	½	0	0	●		1			
8	T. G. JOHNSTON	0	1	½	0		1		●	1	1	½	
9	I. THOMPSON	1	0	0	0	0	0	0	0	●		0	
10	M. YIANNI	0	0	0	0	0			0		●	0	
11	D. M. LIVIE	0		½	0	0			½	1	1	●	

CHAMPIONSHIP 86-88

CONTROLLER : D.G. MORRIS

Nº		1	2	3	4	5	6	7	8	9	Pt.
1	C. R. BEECHAM	□									
2	Prof. G. H. BIRD		□								
3	M. A. HAMMETT			□							
4	B. MARTIN				□						
5	G. A. MORTON					□					
6	A. J. NORRIS						□				
7	G. D. PYRICH							□			
8	J. STEVENSON								□		
9	A. TANKEL									□	

CANDIDATES 85-87

CONTROLLER : C. R. BEECHAM

Nº		1	2	3	4	5	6	7	8	9	10	11	12	13	Pt.
1	A. LUMSDEN	●	-	-	-	-	-	-	-	-	-	-	-	-	½
2	J. BISLAND	-	●	1	0			½	-	½	½	½			
3	Prof. G. H. BIRD	-	0	●		1	1	1	-		0	1	0		
4	R. KILPATRICK	-	1		●	1	1	1	-	1	½	1	½		
5	R. DICKSON	-		0	0	●			-	0	½	0	0		
6	I. MARSHALL	-		0	0		●		-	0	0	½	0		
7	T. Mc MORRAN	-	½	0	0			●	-	0	0	1	1		
8	J. SEYFRIED	-	-	-	-	-	-	-	●	-	-	-	-	-	½
9	W. McMILLAN	-			0	1	1	-	●	0	0		1		
10	J. STEVENSON	-	½				1	1	-	1	●	½	1	1	
11	M. Mac LEOD	-		1	½	½	½	1	-	1	½	●			
12	D. HARVEY	-	½	0	0	1		0	-	0			●		
13	D. McKERRACHER	-	½	1	½	1	1	0	-	0	0			●	

Candidates 86-88

CONTROLLER : C. R. BEECHAM

Nº		1	2	3	4	5	6	7	8	9	10	11	12	13	Pt.
1	M. Dyer	□													
2	A. Hislop		□												
3	R. Innes			□											
4	T. G. Johnston				□										
5	R. Kilpatrick					□									
6	D. McKerracher						□								
7	I. Reeman							□							
8	D. R. Reid								□						
9	M. Ross									□					
10	J. M. T. Ryan										□				
11	Z. E. Sadowski											□			
12	G. R. Sprott												□		
13	G. E. Wallwork													□	

PREMIER TOURNAMENTS CONTROLLER : T.S. WICKINS

Nº	A	1	2	3	4	5	6
1	I. AIRD						
2	R. DICKSON						
3	J. P. L. LUMSDEN						
4	J.W. McINTYRE						
5	Miss A. McHONIGLE						
6	J. MERRIFIELD						

Nº	B	1	2	3	4	5	6
1	C.T.W. BEVERIDGE						
2	M. HANLEY						
3	Mrs. M.E. LEASK						
4	T. Mc MORRAN						
5	McD. W. SMITH						
6	A.R. WILSON						

Nº	C	1	2	3	4	5	6
1	J.P.L. LUMSDEN						
2	P. McGOWAN						
3	J.G.D. DONNELL						
4	D.I. ROSS						
5	R.E. ROUGH						
6	K. SEYFRIED						

Nº	D	1	2	3	4	5
1	D. HARVEY					
2	J.M. HERRIES					
3	S. HILTON					
4	M.J. MOOHAN					
5	A.D. PENMAN					

POSTAL KNIGHT CONTROLLER : D.M. LIVIE

Nº	FINAL	1	2	3	4
1	M.J. BIRD				
2	B.R. HILL				
3	G.W.G. LIVIE				
4	T. Mc MORRAN				

Nº	Q 123	1	2	3	4
1	J.G. BLENCOWE				
2	D.L. GILLESPIE				
3	S. HILTON				
4	C. Mac GREGOR				

Nº	Q 125	1	2	3	4
1	P.J. JACKSON				
2	T. Mc KINLAY				
3	M.J. Mac LEOD				
4	T. MASON				

MAJOR TOURNAMENTS CONTROLLER : G.W.G. LIVIE

Nº	A	1	2	3	4	5	6
1	A. CROCKETT						
2	A.F. HOGG						
3	J. Mc MENEMY						
4	J.M. NOBLE						
5	E. THOMPSON						
6	G. WALLIS						

Nº	B	1	2	3	4	5	6
1	S.R. CAPSEY						
2	S.D. DONERTY						
3	B.W. GRANT						
4	T. Mc KINLAY						
5	I.W.S. MITCHELL						
6	L. STEPHENSON						

Nº	C	1	2	3	4	5
1	J.N. FALCONER					
2	J.M. GARVOCK					
3	P.J. JACKSON					
4	I. SNEDDON					
5	A. WILSON					

Nº	D	1	2	3	4	5
1	B.W. CHALMERS					
2	W. GREEN					
3	F. HALL					
4	W. Mc GLINCHEY					
5	P.J. MOIR					

POSTAL SHIELD

Nº	FINAL	1	2	3	4
1	S. ADAMS				
2	T. CRAIG				
3	K. GORDON				
4	J. WATSON				

Nº	Q 124	1	2	3	4
1	A.G.E. BIRD				
2	W. CAMERON				
3	J.M. GARVOCK				
4	J. Mc MENEMY				

"100 CLUB"

Why not join our Club?

We need your support please.

Only £1 per month per unit.

Details on Page 13.

OPENINGS TOURNAMENT 1986-87 (by Alan Hind)

The new season's selected opening is the Dutch Defence - Staunton Variation beginning with 1 d4 f5, 2 e4. There are two sections with each player having one game with the white pieces and one with black against the other competitors in the section.

Section OT1

No		1	2	3	Pts	Pos
1	J.G. Blencowe	■				
2	H.L. Kuun		■			
3	M.J. MacLeod			■		

Section OT2

No		1	2	3	Pts	Pos
1	J. Kelly	■				
2	Mrs. M.E. Leask		■			
3	G. Wood			■		

No results to report in this issue but I propose to start perhaps a couple of new Openings Sections on :-

1. Alekhine's Defence 1 e4 Nf6
2. Sokolsky 1 b4

I am depending on 3 or 4 players for each section and therefore, if you are interested, please let me know. Note also that these games currently are not graded - so they won't be used against you if you have a disaster! Do participants think that they should/should not be graded?

In response to the Editor's note in the last edition, we have received ideas from two of our readers and all of these will be considered for future sections:-

G.E. Wallwork - 1 d4 d5, 2 Nd2 e5, 3 e4 Nf6

G.A. Merton - sent in various suggestions including the following:

- 1 e4 c5, 2 Nf3 b6
- 1 f4 e5, 2 fxe5
- 1 d4 e6, 2 c4 Bb4+
- 1 d4 Nf3, 2 c4 e5, 3 dxe5 Ne4, 4 Qc2

Many thanks to both of these members for responding!

HANDICAP TOURNAMENT (by Allan Hislop)

Once again we got off to a good start with 25 players taking part and a further 6 players joining later on, so the Handicap remains popular, with some 50 pairings involving nearly 100 games. With that number of games, I hope some of you will send in a game to the Games Section and follow the lead by Peter Jack who had a game from the Handicap in the recent issue of the Magazine. Remember to send in notes with the game and, if published, the Games Editor may add some helpful comments of his own.

SCOTTISH C.C.A. LEAGUE 1986/87

Controller : Ken Gordon

Once again, the Scottish Correspondence Chess League has a record entry of teams and we are delighted that a fifth division has been formed, although only four teams are participating. Holders The Establishment again look favoured for the title but previous champions, Chess Suppliers and Perth Correspondents, along with Cathcart, Falkirk and newly-promoted Brutal Realism, should provide some interesting games.

In Division 2, the Streatham & Brixton line-up is impressive, whilst Glasgow and Crowwood should go close in Division 3 with Black Knight (as dark horses!).

DIVISION 1

A THE ESTABLISHMENT		B PERTH CORRESPONDENTS		C CATHCART "A"	
1 T J Craig	v E1	1 A F Borwell	v D1	1 A Grant	v F1
2 I S Wickens	v D2	2 I Mackintosh	v C2	2 A McGowan	v B2
3 C R Beecham	v C3	3 A Kennedy	v F3	3 A I Hislop	v A3
4 K Fryer	v B4	4 J Falconer	v A4	4 D McRoberts	v E4
5 A Hind	v F5	5 I W S Mitchell	v E5	5 J G O'Donnell	v D5

D FALKIRK RSVP		B CHESS SUPPLIERS "A"		F BRUTAL REALISM	
1 J McLay	v B1	1 A J Shaw	v A1	1 M Ross	v C1
2 G Hamilton	v A2	2 G W G Livie	v F2	2 B Keenan	v E2
3 M Webster	v E3	3 D Livie	v D3	3 P Coffield	v B3
4 A Thomson	v F4	4 L R McKenzie	v C4	4 S Murray	v D4
5 J Desmond	v C5	5 M Dyer	v B5	5 A Thomson	v A5

DIVISION 2

A DREGHORN		B CHESS SUPPLIERS "B"		C KIRKCALDY	
1 G McPeake	v E1	1 I Thomson	v D1	1 G Pyrich	v F1
2 C MacNab	v D2	2 J McIntyre	v C2	2 D H Dempster	v B2
3 S Clark	v C3	3 J Carlin	v F3	3 I Marshall	v A3
4 F Park	v B4	4 D Neil	v A4	4 J J Webster	v E4
5 I Sneddon	v F5	5 M Hanley	v E5	5 M C Grayson	v D5

D FORTH KNIGHTS		B STREATHAM & BRIXTON		F CUMBERNAULD ROOKIES	
1 S Gilmour	v B1	1 C A McNab	v A1	1 I Marks	v C1
2 J P Watson	v A2	2 A J Norris	v F2	2 I MacKay	v E2
3 S Rettle	v E3	3 S R Gillam	v D3	3 H Peffers	v B3
4 R Rough	v F4	4 R A Inglis	v C4	4 F Davis	v D4
5 B Currie	v C5	5 M Inglis	v B5	5 G Pollock	v A5

DIVISION 3

A GLASGOW		B BLACK KNIGHT		C FAISLEY (YMCA)	
1 S R Mannion	v E1	1 B Martin	v D1	1 K Beaton	v F1
2 K W C Stewart	v D2	2 G Wood	v C2	2 M McBeth	v B2
3 C H Brisebois	v C3	3 I Reeman	v F3	3 R Cochrane	v A3
4 T Russell	v B4	4 T Johnston	v A4	4 G Reid	v E4
5 J Ward	v F5	5 G Sprott	v E5	5 A Cowan	v D5

D CROWWOOD		B STRATHCLYDE UNIVERSITY		F PAVN PUSHERS	
1 J B Henderson	v B1	1 M MacLeod	v A1	1 K McDonald	v C1
2 J Stevenson	v A2	2 J Shaw	v F2	2 S Hilton	v E2
3 J Doyle	v E3	3 M Moohan	v D3	3 S Doherty	v B3
4 A Maxwell	v F4	4 D Gourlay	v C4	4 J Garvock	v D4
5 D L Gillespie	v C5	5 J McRoberts	v B5	5 T Mason	v A5

DIVISION 4

A REAL TELECOM		B DALMUIR "A"		C HANGOVER FR KNIGHTS AT THE PUB	
1 R Dickson	v E1	1 I Aird	v D1	1 R Lothian	v F1
2 S Brady	v D2	2 M McGinley	v C2	2 T Blake	v B2
3 J Burns	v C3	3 R McDermott	v F3	3 J Ross	v A3
4 E Coccozza	v B4	4 D McAdam	v A4	4 G Argo	v E4
5 S Phillips	v F5	5 J McCarthy	v E5	5 S Nelson	v D5

D IRVINE		B WANDERING DRAGONS		F CHESS SUPPLIERS "C"	
1 J Anderson	v B1	1 S Gowland	v A1	1 M E McGhee	v C1
2 D Gillespie	v A2	2 C Donkin	v F2	2 P McGowan	v E2
3 T Barrett	v E3	3 N Clapperton	v D3	3 G Wallis	v B3
4 G King	v F4	4 M Kelly	v C4	4 W B Duff	v D4
5 J Shankland	v C5	5 D E V Poots	v B5	5 A Duff	v A5

DIVISION 5

A ALLOA		B CASTLEBELL		C DALMUIR "B"	
1 F Borkowski	v B1	1 D Reid	v A1	1 W McGlinchey	v D1
2 J Gilchrist	v D2	2 R J P Kynoch	v C2	2 M Devine	v B2
3 A Scott	v C3	3 D A Gibb	v D3	3 M Alexander	v A3
4 A Cook	v C4	4 K J Rose	v D4	4 A Tyrrell	v A4
5 P Strain	v D5	5 C A MacGregor	v C5	5 E Kenny	v B5

D THE ENDGAME

1 M Mitchell	v C1
2 P Ferry	v A2
3 G Grant	v B3
4 H L Koun	v B4
5 R I Fisher	v A5

Invitation to New Teams

The Scottish CCA League would be delighted to welcome new teams of five players for next season. This is an excellent way to try correspondence chess with only 2 games per player. Details available from Alan Hind, 6 Struan Road, Cathcart, Glasgow G44 3AT

SCOTTISH CENTENARY INTERNATIONAL TOURNAMENT

The favourites now to win the tournament are Volker Anton (DDR) who has scored 7½ pts (with 4 games to finish) and Eero Hintikka (Fin) 7½ (4), who need only another 2½ pts for the GM titles, although it will be close with Douglas Bryson on 9½ (1), Simon Webb 7½ (3), Nigel Povah 7½ (2), Borislav Vukcevic (Yug) 6½ (4), Prof Dr W. Sagorowski 4½ (6) and Dr J Foldi (Hun) 4½ (6) also in contention. The current table is as follows:

No	SCOTTISH CENTENARY	NATION	1	2	3	4	5	6	7	8	9	10	11	12	13	14	15	POINTS
1	IM POVAH N.E.	GBE	□	W 1	½	0	1	W ½	W 1	½	W ½	0	W 1	½	W	1		
2	GM NAPOLITANO M.	ITA	0	□	0	0	0	0	0	0	0	0	0	0	0	0	0	
3	GM BERIA M.	YUG	W ½	1	□	W ½	W ½	W ½	W 0	W 0	W 1	½	W ½	0				
4	NM STRAND K.	NOR	1	W ½	1	□	W ½	W ½	1	0	½	W ½	½	0	W	0		
5	IM STERUD E.	NOR	W 0	1	W ½	1	□	W ½	W ½	0	W ½	0	W ½	0	W ½	W ½	0	
6	IM ANTON V.M.	DDR	½	W 1	½	W ½	1	□	W 1	½	W ½	W 1	1	W	1	½	W 1	
7	GM VUKCEVIC B.	YUG	W	1	W ½	½	0	□	W 1	W	½	W 1	W	1	0	W	1	0
8	GM DIACONESCU P.	ROU	0	W 1	0	W ½	W ½	0	□	W 0	0	0	0	0	0	0	0	0
9	IM HINTIKKA E.	FIN	W ½	1	W 1	1	W 1	½	W	1	□	W 1	W 1	0	W	½	W	
10	GM SAGOROWSKI Prof. Dr W.	SU	½	W 1	W ½	½	W	W	1	□	W ½	W ½	W ½	W				
11	IM SORENSEN H.	DK	W 1	1	W 1	½	W 1	0	W ½	1	0	½	□	1	0	W	½	
12	IM BOHAK J.	YUG	0	W 1	0	W ½	W ½	0	W 1	0	W	0	□	W	W	0		
13	GM WEBB S.	GBE	W ½	1	W ½	1	W ½	W	1	W ½	W 1	□	W ½	0				
14	IM FOLDI Dr. J.	HUN	W 1	½	W	½	W ½	0	W 1	W	W	W	½	□	W ½			
15	NM BRYSON D.M.	GBS	W 0	1	W 1	1	W 1	0	W 1	1	W ½	W ½	1	W 1	½	□		

NORWEGIAN POSTAL CHESS - 40th ANNIVERSARY TOURNAMENT

Douglas Bryson of Scotland has won this event with the fine score of 10 points (with 1 game to finish). His nearest rival, Ove Ekebjerg (Den) has completed his games scoring 9½ pts, a score which could be matched by Dick Smit (NL) 8½ (1) and Horst Handel (DDR) 6½ (3).

This is a marvellous result for Douglas and both he and Scotland are very appreciative of the invitation from Norway which enabled the achievement of Scotland's first GM title.

No	NORWEGIAN 40th ANNIVERSARY	NATION	1	2	3	4	5	6	7	8	9	10	11	12	13	14	15	P
1	DR. H W DUNHAUPT	BRD	1	1	1	1	0	1	1	0	1	0	1	1	1	0		
2	TERJE WIBE	N	0	1	1	1	1	1	0	1	0	1	1	1	0	1		
3	DICK SMIT	NL	0	1	1	1	1	1	1	1	1	1	1	1	1	1		
4	FRANCEK BRGLEZ	YU	0	1	0	1	0	1	1	1	0	1	1	1	1	1		
5	HORST HANDEL	DDR	1	1	1	1	1	1	1	1	1	1	1	1	1	1		
6	OVE EKEBJERG	DK	1	1	1	1	1	1	1	1	1	1	1	1	1	1	9½	
7	PETER OAKLEY	GBE	0	0	0	0	0	0	0	0	0	0	0	0	0	0	2	
8	DAG ORSETH	N	0	0	1	0	1	1	1	1	1	1	1	1	1	1		
9	DOUGLAS M BRYSON	SCO	1	1	0	1	0	1	1	1	1	1	1	1	1	1	10	
10	ADRIAN HOLLIS	GBE	1	1	1	1	1	1	1	1	1	1	1	1	1	1		
11	ISTVÁN SCHRAN CZ	H	1	1	0	0	0	1	0	0	0	1	0	1	1			
12	SÁNDOR BRILL-BANFALVI	H	0	0	1	1	1	0	0	0	0	0	1	1				
13	A A IDEMA	NL	1	1	1	1	1	0	1	0	1	1	1	1	1			
14	INGO SCHÜTT	BRD	1	1	1	1	1	0	0	0	0	1	0	1	1			
15	OLLI KOSKINEN	SF	1	0	1	1	0	1	0	1	0	1	1	1	1			

SCOTTISH CENTENARY CUP - Semi-finals.

COMBOLFR : D.M. LIVIE

No	Section 1	1	2	3	4	5	6	7	Pt.	Pl.
1	D. Neil	□								
2	R. Brownsord		□							
3	E. Davis			□						
4	A.W.I. Campbell				□					
5	A.G.E. Bird					□				
6	V.W. Griffiths						□			
7	Dr. A. Tankel							□		

No	Section 2	1	2	3	4	5	6	7	Pt.	Pl.
1	D. Quinn	□								
2	E. Wood		□							
3	S.C. Crowdy			□						
4	M. Thomas				□					
5	E. J. Smith					□				
6	B. J. Martin						□			
7	M. Dyer							□		

No	Section 3	1	2	3	4	5	6	7	Pt.	Pl.
1	R. Beacon	□								
2	A.E. Dearlove		□							
3	J. Copley			□						
4	A. Mukherjee				□					
5	M. MacLeod					□				
6	I. Mac Kay						□			
7	A. Muir							□		

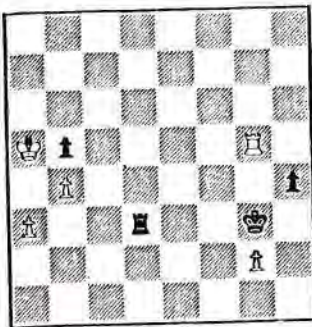
No	Section 4	1	2	3	4	5	6	7	8	Pt.	Pl.
1	D. Harvey	□									
2	L. Langstaffe		□								
3	P. Tibbert			□							
4	D.L. Gillespie				□						
5	V.W. Griffiths					□					
6	D.I. Ross						□				
7	S. Whitehead							□			
8	D. Quinn								□		

ENDGAME COMPETITION

The two positions on page 17 of our last News Bulletin attracted no entries! This either shows that readers are not really interested in winning £10, or they do not like endgame studies! To generate a little more interest, I give actual continuations in the two games:-

Position A - SCCA League 1986-7

A P Borwell
(Black
to move)



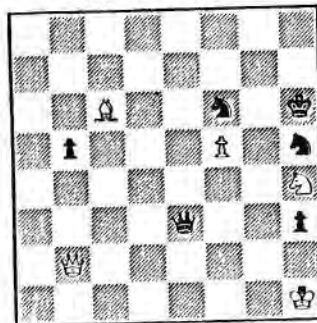
T S Wickens
(White)

White has just played 41 Rg5+

41 ...	Kf4 (why?)
42 Rg7!	Rxa3+
43 Kxb5	Rg3
44 Rf7+	Ke3
45 Re7+	Kf4 (why?)
46 Re2	Drawn (why?)

Position B - ICCF Olympiad Prelims

A P Borwell
(Black
to move)



S J Henri
(Australia)
(White)

White has played 52 Bc6 (from e4).

52 ...	b4
53 Qxb4	Ng3+ (why?)
54 Kh2	Qf2+ (why?)
55 Kh3	Qf1+
56 Kh2	Drawn (why?)

The prize of £10 is still on offer for the best analysis received of the two positions. I will provide my own notes in a later edition of the News Bulletin, but I hope someone in the meantime may improve upon them!

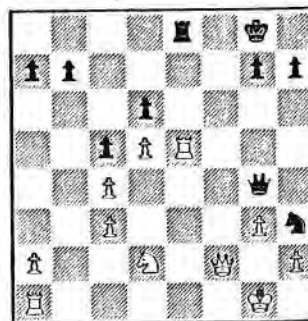
Entries please to me:

Alan P Borwell, 8 Wheatfield Avenue,
Incubure, Perthshire, PH14 9RY.

ANALYSIS COMPETITION

Douglas Bryson has also sent in a position for readers' analysis from a game in the Scottish Centenary International Tournament. In the following position, his Roumanian GM opponent resigned, but why?

Bryson
(Black)



Diaconescu
(White
to move)

1. What is White's best king move?
2. What is wrong with the alternatives?
3. After the best king move, how does Black win?

Two years' free subscription to the News Bulletin will be the prize for the winner.

Entries for this competition should be sent to Douglas M. Bryson,
38 Duncryne Avenue, Mount Vernon,
Glasgow G32 0RQ.

Overseas Subscribers

Subscription for one year's editions of the Scottish CCA News Bulletin can be obtained from the Editor for £5 p.a. (inclusive of postage)

NEW BOOKS



SICILIAN : SVESHNIKOV VARIATION by Adorjan and Horvath

Published by Pergamon Press. Limp cover + 172 pages. £8.25.

This most welcome addition to the popular Pergamon Chess Openings series covers all of the main variations, quoting from recent games in its extensive notes. Plenty of diagrams of the more critical positions and easy indexing of variations make it a useful reference book for keen correspondence players. This opening provides Black with excellent winning prospects for players who enjoy tactical and double-edged positions.

BRITISH CHESS MAGAZINE : 1923-1932 AN ANTHOLOGY

Published by BCM, 9 Market Street, St. Leonards-on-Sea TN38 0DQ. Limp cover + 123 pages. £6.95 post free from the publishers.

A novel publication of selected material from the palmy days of Lasker, Capablanca and Alekhine. There are 36 interesting photographs, games, reviews and obituaries of famous chess players. Historical references abound and include a game played in 1820 by Napoleon who defeated his opponent in 18 moves using The Scotch Gambit! In 1931, the World Team Tournament was won by United States, with a team designated "British Empire" finishing ninth - a far cry from more recent times when England, Scotland and Wales compete independently (although the BCF organises an event which still could be designated the "Old British Empire Championship"!)

This book would be a welcome addition to a collector's library and it is hoped that further will be published covering later periods.

PAUL KERES' BEST GAMES : VOLUME 1 - CLOSED GAMES by Varnusz

Published by Pergamon Press. Limp cover + 192 pages. £11.50

Following a short biography of the Estonian Grandmaster and his tournament and match record, there are 170 superb games with Queens Pawn 1 d4 and Reti/English Openings. These are classified by openings and sub-variations with plenty of diagrams and interesting analysis. Paul Keres was one of the greatest personalities in the history of chess and this is a fitting way to commemorate his spectacular combinations, positional subtleties and accurate endgames. Some 30 years ago, I was privileged to be host for a day with this chess legend and he was just as entertaining as a person as he was a chess player.

The second volume covering 1 e4 openings, is eagerly awaited.

BOOK REVIEWS

(by Alan Borwell)

A CHAT WITH ... DOUGLAS LIVIE (by Alan Hind)

When and where were you born, and when did you start playing chess?

I was born on 3rd December 1959 in the City of Glasgow. My dad (our Vice President) taught me to play chess at a very early age - there have always been chess sets in our house!

Did you play chess at school?

Yes! I played for Hillpark Secondary School in Glasgow and I won the School Championship three times from three attempts. We did not have a strong team but we always finished mid-league.

Did you go to university or college? What did you study?

I finished my B.Sc. in Computing with Operational Research at Paisley College of Technology in 1981.

Where do you work and what sort of work do you do?

I work for Berkeley Computer Services Ltd in Glasgow. I entered the company as a computer programmer in 1981 and today my work covers system analysis, programming, system installations and support work.

Are you married?

Yes! I met my wife in 1976 while we were at school. We actually started dating on 23rd October 1977, got engaged on 23rd October 1981 and married on 23rd October 1982. (It's only one date to remember!) We were married at Merrylea Parish Church, where we are members, and the reception was held at the nearby Redhurst Hotel.

On 19th March 1986, we became proud parents when Steven, our son, was born. Now I know why my dad's chess sets had "teeth marks" on them - yes, it does mean that another generation of chess-playing "Livies" could be on the way!

Where do you play OTB chess?

I have always represented Cathcart Chess Club, since I was taken along at the age of 9 years by my dad. I have played league chess since the early seventies and to date I have one Winner's Medal for the Glasgow League Div 1 (1985/86) and one Winner's Medal for Glasgow League Div 3 (1984/85)

Do you officiate in any OTB events?

Yes, I have controlled the Cathcart Club Championship or Candidates event for about 4 years (1982-86). Last year (1986), Cathcart held their first Open event, which took place as a pre-season tournament (in September); I also controlled this event. I also assist our Secretary, Alan Hind, in controlling his Whitbread La Taverna Tournament.

Which SCCA events do you play in?

I am currently taking part in the 1985/87 Championship event, but have played in our Candidates tournament for a number of years. I have found recently that my time has been taken up controlling our Centenary Cup Tournament (16 entries). I now hold the post of Assistant Secretary, following three years as Grading Officer.

"100 CLUB"

This is a club for members who really would like to help the Scottish Correspondence Chess Association develop further. Currently there are around 80 units issued but we need to increase this to 100 as soon as possible - please help us!

The subscription is only £1 per month per unit, with two prizes each month currently approx £22 and £15 respectively - members may apply for more than one unit if they so wish!

A monthly bankers order form can be obtained from our Treasurer, **George Pyrich**, 53 Dunnikier Road, Kirkcaldy, Fife, KY11 2RL. If you return it to him before the 10th of the month, then you will be eligible for inclusion in the draw for that month.

Recent winners:

	November	December	January	February
1st Prize	G.D. Pyrich	C.R. Beecham	D.M. Livie	A. McGowan
2nd Prize	K.B. McAlpine	A.J. McClelland	G.W.G. Livie	D.M. Livie



ICCF THEMATIC TOURNAMENTS

The latest tournaments available to Scottish Correspondence Chess Association members through BPCF are shown hereunder. Each tournament will be arranged in sections of 5-7 players; two games against each opponent. The top two players from each section qualify for the final. The entry fee is £3.50 per group (payable to BPCF) and sent to A.M. Anderson, 3 Winterfield Gdns, Duns, Berwickshire, TD11 3EZ.

TT No.5/87 BUDAPEST GAMBIT

1 d4 Nf6, 2 c4 e5.

Entries close 1/7/87. Start 1/9/87.

TT No.6/87 ALEKHINE

1 e4 Nf6, 2 e5 Nd5, 3 d4 d6, 4 c4 Nb6, 5 f4

Entries close 10/8/87. Start 10/10/87

TT No.7/87 CARO KANN (PANOV VARIATION)

1 e4 c6, 2 d4 d5, 3 exd5 cxd5, 4 c4 Nf6

Entries close 1/9/87. Start 1/11/87

TT No.8/87 SCANDINAVIAN

1 e4 d5, 2 exd5 Qxd5, 3 Nc3

Entries close 1/10/87. Start 1/12/87

TT No.1/88 BENKO GAMBIT

1 d4 Nf6, 2 c4 c5, 3 d5 b5

Entries close 1/12/87. Start 1/2/88.

TT No.2/88 NIMZO INDIAN

1 d4 Nf6, 2 c4 e6, 3 Nc3 Bb4

Entries close 7/1/88. Start 1/3/88.

I.C.C.F. ENTRIES

The following Scottish CCA players entered I.C.C.F. events in the period October-December 1986:

A.R. Wilson - World 1st Class Section
C. MacGregor - World 3rd Class Section
M.J. Macleod - ICCF Thematic Tourney

TREAT OPENING BOOKS WITH CAUTION
(by Philip Giulian)

One of the main differences between correspondence play and over-the-board play is the opportunity to look up books on the opening. Some tournaments ban it in the rules, but most specifically allow it. I would like to advise extreme caution when using these books. Often there are mistakes and sometimes outright blunders in the analysis.

Why should this be? I believe there are three reasons. Firstly, a number of books are written by people I would call "chancers; people who write books in a hurry with little attention to accuracy; people who see the book as an easy way of making money. Unfortunately, the laws of libel prevent me from identifying anyone here.

Then there are those who deliberately include mistakes in their analysis. The object is to obtain an easy win at a later date against some poor soul who believed what he read.

Finally, there are instances where an author makes a genuine mistake. Just consider the volume of analysis in a book. Think of the number of hours of research and homework that must go into its writing. Is it any wonder that mistakes are made?

Let me give a couple of examples from my own games. Both of these occurred in the North Atlantic Team Tourney in which I am playing for Scotland.

White: A. Stewart (England)
Black: P. Giulian (Scotland)

1	d4	Nf6
2	Nc3	d5
3	Bg5	Bf5

The analysis I was following (written by a Grandmaster) suggested playing the opening in a similar way to the Caro-Cann (4 ... Nf6). This is an opening I like and so it seemed like a good idea.

4	Bxf6	gxf6
5	e3	e6
6	Nge2!	

This move was not mentioned in the analysis, but is sometimes played in the Caro-Cann, so continue as intended with

6	...	c5
7	Ng3	Bg6
8	h4!	

Again this is often played against the Caro-Cann. Unfortunately, I don't have the usual h5 reply because the pawn would be easily lost, so the only move must be

8	...	h6
9	h5	Bh7
10	e4!!	

This is what I had missed when playing my sixth move. It seems so illogical, opening the position for my bishops, but on closer examination my dreadful pawn structure and lack of development leaves me with a lost position. Either pawn capture speeds White's development, so

10	...	Nc6
11	exd5	Nxd4
12	Bd3	Bxd3
13	Qxd3	Qb6
14	0-0-0	0-0-0
15	Qc4	

Now White has terrible threats involving Rxd4, Na4 and Ne4.

15	...	e5
16	Nce2	

Now my position is virtually hopeless. White intends to swap my knight and then place his own knight on f5.

16	...	Kb8
17	c3	Nb5

18	Nf5	Nd6
19	Nxd6	Exd6
20	Ng3	e4!

The loss of a pawn is a small price to pay for activating my bishop. If White takes the pawn, I can play f5 and have reasonable drawing changes.

21	Nf5!	Rhe8
22	Rh4	

Not 22 Nxb6?? Pf4+

22	...	Bf8
23	Rxe4	Re5
24	Rxe5	fxe5
25	d6!	Exd6
26	Nxb6	Be?
27	Rxd8+	Qxd8
28	Nxf7	Bg5+
29	f4	Resigns

I don't think I will repeat that opening again!

The second game is from the same tournament. Remarkably I had exactly the same opening in two of my games!

White: F. Chevaldonnet (France)
Black: P. Giulian (Scotland)

1.	e4	e6
2	d4	d5
3	e5	c5
4	c3	Nc6
5	Nf3	Qb6
6	a3	c4
7	g3	f6
8	exf6	Nxf6
9	Bg2	Bd6
10	0-0	0-0
11	Qe2	Na5?

This move is recommended by Watson in his book on the French Defence and by Keene and Kasparov in Batsford Chess Openings.

12	Nbd2	Bd7
13	Ne5	Be8

Better for Black says the analysis, and it was in Gibney (Ireland) v Giulian which continued 14. Ng4 Kb8!, 15 f4 Bg6!, 16 Nf2 Rae8, etc. However, Chevaldonnet plays a much better move.

14	Ndr3!!	Nb3
15	Rb1	Nxc1

Otherwise White plays Pf4 and although Black's knight looks good, it doesn't do much.

16	Rbxc1	Kb8
17	Rccl	

Now the backward e-pawn is under terrific pressure.

17	...	Bb5
18	Qc2	Rae8
19	h3	Re7
20	Re3	Ne4

Desperation, but what else?

21	Nxc4!	dxc4
22	Qxe4	Qxb2
23	Ne5	Bxe5
24	Qxe5	Bg6
25	Qd6	Ref7
26	Rf3	Rxf3
27	Bxf3	Re8
28	Qb4	Qxb4
29	axb4	b6
30	Re1	Bf7

Otherwise d5 is killing.

This is the current position and I must be losing. I doubt if I will play that opening again either!



Please send games (preferably annotated) to our Games Editor:-

Douglas M. Bryson,
38 Duncryne Avenue,
Mount Vernon,
Glasgow G32 0RQ.

AN ANNOTATION FOR THE IMPROVING PLAYER

Played in PCL (Sutton Coldfield) 1990

White: J. Watson (Team: TSB3)
Black: M.H. Napie (Team: Sun Life)

Opening: Queens Pawn Counter Gambit

(Notes by J. Watson except where otherwise indicated).

In this encounter between the representatives of two financial giants, Black shows as early as move 2 that he is not afraid of a scrap. White avoids this (and thereby gains a psychological edge) essentially by bypassing the middlegame altogether, swapping material to reach a better ending. It may not be the most exciting way of playing chess, but the result counts just as much as the most brilliant sacrificial gem!

1 e4 e5
2 Nf3 d5

(?! - BCO). Black signals his intention to fight in the centre, and he is prepared to sac a pawn for the initiative. This should lead to a lively tactical game, which does not suit White's style of play.

3 exd5 Bd6
4 d4 e4
5 Ne5 Nd7

An example of the tactical possibilities that can arise from this opening is given in MCO:
5 ... Ne7, 6 Bg5 0-0, 7 Bh4 f6,
8 Bc4 Kh8! =.

6 Bb5

Immediately pinning the knight. White intends to simplify by swapping off pieces and hopes that his extra pawn will be enough to win the subsequent ending.

6 ... Ngf6
7 Bg5

Pinning the other knight and preparing to force exchanges.

7 ... 0-0
8 Bxd7 Bxd7
9 Nxd7 Qxd7
10 Bx16 gxf6
11 c4

White's plan has succeeded and Black, with his k-side pawns weakened, has little to show for the loss of his pawn.

11 ... c5?

JW: This move allows White to eliminate his doubled d-pawns and also presents him with a supported passed pawn.

NM: I took the view that if I did not simplify things here then whenever I had an attack going White would take the wind out of my sails by causing havoc with these pawns.

12 dxc5 Bxc5
13 0-0 Kh8

Black now intends to attack down the g-file with his rooks.

14 Nc3 f5
15 Na4

Hoping to swap off Black's bishop, which could otherwise feature strongly in an attack against the White king.

15 ... Bd6
16 Qd4+ f6
17 Nc5 Bxc5?

JW: Surely this must be bad for Black - the exchange of minor pieces was not forced.

NM: However, White is threatening Ne6 which seemed to me to be avoided at all (reasonable) costs!

18 Qxc5 Rac8
19 Qd4 b6
20 b3 Qd6
21 Rae1

White turns his attention to the k-side and Black's weak pawns.

21 ... Rg8
22 f3 Rg6?!

JV: Preparing to double rooks on the g-file, but it costs Black another pawn. Better was 22 ... exf3 first, then Rg6. NM: I felt that if 22 ... exf3, 23 Rxf3, White's rooks would be in the open, ready to go on the rampage and Black's energies would be diverted to defending pawns.

23 fxe4 Rcg8
24 Rf2

Not 24 g3? Rxc3+!

24 ... fxe4
25 Rxe4 Rf8

White threatened 26 Re6 picking up the f-pawn and launching his own attack.

26 Re6

This move is still good for White though.

26 ... Qd8
27 d6

With all of Black's pieces tied to the defence of his f-pawn, White now starts a pawn roller in the centre.

27 ... Rf7
28 b4 Kg7

The Black king comes to the defence of the f-pawn, freeing his queen.

29 c5 bxc5
30 bxc5 Qd7
31 Rfe2

White now threatens to play Re7 at some later stage.

31 ... Qb7
32 Qe4!

White is in no hurry to play Re7, and must beware of Black finding a draw by perpetual check. From this central square the White queen covers important squares all over the board, protecting g2 and preventing 33 ... Qb1+. Of course, if Black chooses to swap queens, White will win easily by pushing his pawns.

32 ... Qb5
33 c6

Another square covered by White's queen.

33 ... Qc5+
34 Kf1

Better than 34 Kh1 which might allow Black to threaten a back rank mate.

34 ... Qc1+
35 Re1

Now Black has no more checks, again due to the domination of the board by the White queen.

35 ... Qb2
36 d7

Why complicate the issue with 36 Re7 when this wins just as easily?

Black resigns. There is no defence to Re8 followed by d8.



A COSTLY BUSINESS?
13p per game or 23p per move!

On four occasions recently, an SCCA member (who shall be anonymous) sent his opponent window envelopes with a mint 13p postage stamp overlaid with clear sellotape. The GPO made a surcharge of "23p to pay".

The seeming motive and certain penalty are illuminated by the subject heading. Possible gullible SCCA members may adopt this "bright idea" if their first receipt of mail from this anonymous perpetrator does not incur the 23p surcharge. Many members thereby could fall victim to the 23p surcharge.

Our aggrieved member rightly states that such practices could give the SCCA a bad image! (Editor)



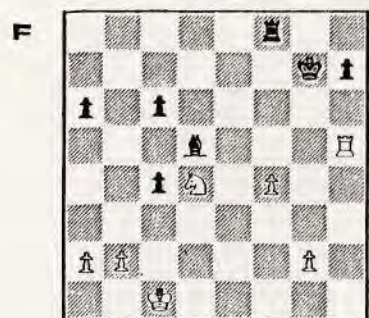
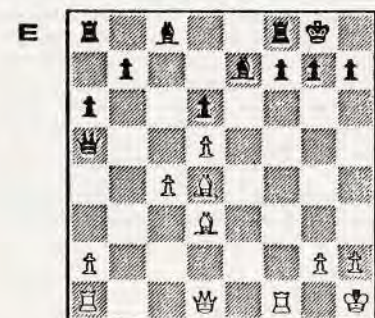
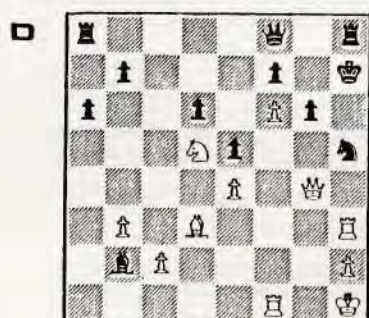
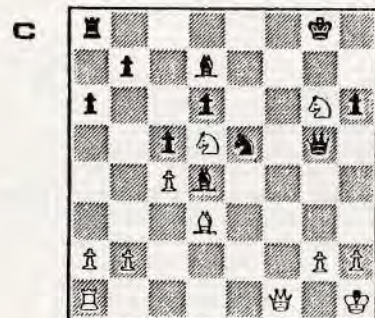
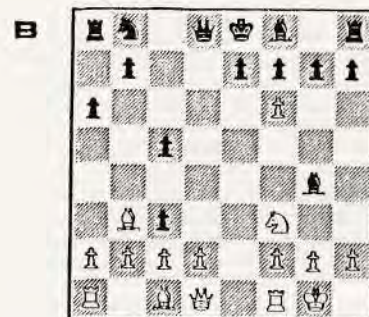
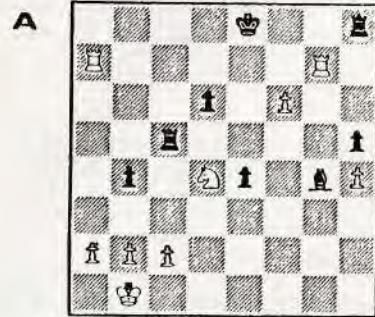
! WINNING CONTINUATIONS !

ICCF GRADING LIST - TOP 100

White plays up the board

White to move

selected by JOHN HAWKES



Solutions on page 40

The first official grading list published by ICCF included all results of tournaments completed at 31/12/86 and also all results of games completed at that date from events which were still in progress. This latter procedure is a very good approach because of the time span necessary for many international correspondence chess tournaments, where some games are completed relatively quickly and others take many years. An ICCF grading list will now be issued annually and it is likely to be used to an increasing extent for determining future title norm categories for events officially recognised by ICCF. At least 24 completed eligible games are necessary before a player's grading is published by ICCF.

1	Bang, Erik B H	G DK	2650	Sitschew, A W	SU	2560
2	Chasin, Abram I	G SU	2645	Woltschok, A S	M SU	2560
3	Moltschanow, W F	M SU	2640	56 Breazu, Mihai	G R	2555
	Sloth, Jorn	G DK	2640	Costea, Eugen	M R	2555
5	Deuel, A E	SU	2625	Grunberg, Hans-Ulrich	DDR	2555
	Dubinin, Pjotr V	G SU	2625	Herbert, Jean	G CA	2555
7	Goldenberg, Richard	F	2620	Mikenas, Wladis I	M SU	2555
8	Gudjev, M	M BG	2615	Stern, Dieter	G BRD	2555
9	Anton, Volker-M	M DDR	2610	Wiersma, Tjalling	G NL	2555
	Kotkow, JU M	SU	2610	63 Bade, Uwe	DDR	2550
11	Arnliid, Eric A	G S	2605	Berry, F Jonathan	G CA	2550
	Bouwmeester, Hans	G NL	2605	Boll, Peter A I M	NL	2550
	Sorensen, Arne	DK	2605	Brilla Banfalvi, Sandor	G H	2550
14	Hollis, Dr. Adrian S	G GBE	2600	Ekebjerg, Ove	M DK	2550
15	Nesis, Gennady E	G SU	2595	Franzen, Dr J	G CS	2550
	Podkrajsek, Janez	M YU	2595	Pedersen, Svend	M DK	2550
	Rupp, Franz	M A	2595	Ploch, Zygmunt	M PL	2550
	Wibe, Terje P	M N	2595	Thiele, Erich	M DDR	2550
19	Krzyszton, Jerzy	M PL	2590	Webb, Simon	G GBE	2550
	Lecroq, Michel	M F	2590	Zrzavy, Jan	CS	2550
	Manen, Drs Gerben Van	NL	2590	74 Idema, Dr A A	NL	2545
	Rabinowicz, M B	SU	2590	Jaschelin, P G	M SU	2545
	Rittner, Horst R	G DDR	2590	Judowitsch, Michail M	G SU	2545
	Ritums, J	SU	2590	Kletsel, Michail M	M SU	2545
25	Gariga Nualart, Jose	M E	2585	Palciauskas, Victor V	G US	2545
	Gefenas, W	M SU	2585	Schatzel, Friedrich	M A	2545
27	Anton, Ing Aurel	M R	2580	80 Barsch, H G	DDR	2540
	Haag, Ervin	M H	2580	Danner, Georg	M A	2540
	Kauranen, Risto	G SF	2580	Folgmann, Karl-Helinz	M DDR	2540
	Kopilow, I A	SU	2580	Rufenacht, Matthais	CH	2540
	Kramer, Haje J	G NL	2580	Sokolow, S M	M SU	2540
	Larsen, Ernst	M DK	2580	85 Kaschljak, A N	SU	2535
33	Bryson, Douglas M	M GBS	2575	Seeliger, Dr Wolfgang	M BRD	2535
	Gowbinder, Michail J	M SU	2575	87 Krivun, N M	M SU	2530
	Rastjanis, Gediminas	SU	2575	Lekander, R	M SU	2530
	Richardson, Keith Bevin	G GBE	2575	Nelstadt, Jakob I	M SU	2530
	Sagurovsky, Prof Dr Vlad P	G SU	2575	Noria Silvestre, Joaquin	E	2530
	Sanakoew, Grigorij	G SU	2575	Petrattis, Z	SU	2530
39	Fabri, Ferenc	H	2570	Schadursky, Peter	SU	2530
	Klovans, Jenis J	M SU	2570	93 Blockx, Frank	M B	2525
	Kosenkow, Vsevolod	G SU	2570	Hernod, BO	M S	2525
	Michailow, Alexej I	G SU	2570	Merilo, H J	M Su	2525
	Ouden, IR A Den	G NL	2570	Planta, Prof Dr R J	M NL	2525
	Santos, Luis	M P	2570	Sorri, Juhani	G SF	2525
45	Andrejew, N P	M BG	2565	Stull, Norbert	LU	2525
	Brzozka, Stefan	G PL	2565	99 Karaptschanski, Dimitar Z	M BG	2520
	Geller, Aleksandr G	M SU	2565	Korelow, A P	G SU	2520
	Omeltschenko, Lev E	M SU	2565	Madler, Jurgen	M DDR	2520
	Podolsk, A B	SU	2565	Moissejev, Oleg L	G SU	2520
	Sorensen, Bent	DK	2565	Palm, Hans	M BRD	2520
51	Fenrose, Dr Jonathan	G GBE	2560	Radeker, Bernd	BRD	2520
	Pulkis, V	SU	2560	Steinsapir, J E	SU	2520
	Pyszkina, A S	SU	2560	Stertenbrink, Gunter	G BRD	2520

SCOTTISH CCA GRADING LIST - 1986 (by Tony McClelland)

This year's list excludes those players who have not played in the last five years. Despite this there are 157 players on the main list, exactly the same number as last year. In addition, there is a very large number of players who appear in the grading filing system but have not yet recorded enough results to appear on the list.

The main grading list consists of:

- Recognised players - those who have twenty or more recorded results against recognised or provisionally graded players.
- Provisionally graded players (shown by *) - those who have at least eight recorded results against recognised or provisionally graded players.

SCOTTISH CORRESPONDENCE CHESS MASTERS

K B McAlpine (1979)
D M Bryson (1981)
P M Giulian (1983)
A J Norris (1986)

HOLDERS OF NORMS

C R Beecham (2 norms) (1985,1986)
G J Morrison (2 norms) (1984,1986)

MAIN GRADING LIST

(ICCF)			(ICCF)		
Aird	I	1810*	Davis	E	1985
Anderson	A M	1230*	Dempster	D H	2115
Anderson	D G	1750*	Dickson	R	1705
Anderson	G M	2075	Dyer	M	1870
Argo	G M	1725*	Gibson	N C	1550*
Baxter	R W M	2415	Gillam	S R	2175
Beacon	R	1895*	Gillespie	D L	1545
Beecham	C R	2350 (2360)	Giulian	P M	2320 (2350)
Beer	K	1775*	Giulian	Mrs R	1600*
Beveridge	C T W	1570	Glass	A B	2080*
Bird	G H	1915	Gordon	K	1755
Bisland	J	1810	Gordon	J R	1830*
Blencowe	J	1590*	Gracie	A	1840 (2010)
Borwell	A P	2050 (2315)	Grant	A	1375
Bown	C J	1625	Hall	F	1510
Boyle	C F	1910	Hamilton	G	1510
Boyle	M T	1430*	Hartford	Mrs E A	1695
Brady	W G	1950	Harvey	D	1830
Brannan	J	1625	Hawkes	J E	1895* (2350)
Bryson	D M	2610 (2575)	Herries	J M	1690
Cairney	J S	1530*	Hilton	S H	1560*
Campbell	I S	2050	Hislop	A T	1935
Capsey	S R	1460	Hughson	D A	2090*
Carlin	J	1745*	Hutchison	W J	1450*
Chalmers	B W	1525*	Inglis	R	2180*
Chalmers	G G	1430*	Innes	R M	2000
Chalmers	Mrs J	1690*	Jack	J P E	1640
Chandler	G	1890*	Jackson	P	1465*
Clark	S L	1705*	Jackson	R	1990
Clapham	R E	1350*	James	C R	1320
Clayton	J A	1480	Jenkins	D M	2150
Coffield	P	1780	Johnston	T G	1950
Craig	T J	2190	Kerr	A H	1445
Crichton	D	1815	Kilgour	D A	2310 (2190)
			Kilpatrick	R	1990

(ICCF)

King-Spooner	S	1685*
Kirkland	A G	1895
Livie	A W	1270*
Livie	D M	1825
Livie	G W G	2000
Loughran	R	1265*
Lumaden	A	1490
MacArthur	J	1800
MacGregor	C A	1310*
Mackie	S G	1705*
Mackintosh	I	1795
Mannion	S R	2245
Marks	I A	1885
Marshall	I	1810
Martin	B J	2235
McAlpine	K B	2565
McClelland	A J	2000
McGhee	M E	1720
McGhee	Mrs M	1845
McGlinchey	W	1445*
McGowan	A	2205*
McIntyre	J W	1760*
McKerracher	D	2005
McLay	J W	1880*
McLure	Mrs A	1670*
McMenemy	J	1390
McMenemy	Mrs S	1440*
McMillan	I	1370*
McMorran	T	1630
McRoberts	D G	1475
McTaggart	J	1695*
Merrifield	J	1585
Millar	A	1575*
Mitchell	I W S	1400
Mitchell	K A	2105*
Mitchell	Robert	1980*
Mitchell	Ross	1065
Mitchell	S	1580*
Morrison	C J	2330
Morrison	G	2360 (2215)
Morrison	T	1515*
Morton	G A	1980
Murray	E H	1415*
Murray	J S	1840
Nichol	M	1215*

(ICCF)

Norris	A J	2510 (2350)
Nye	V A	1880
O'Donnell	J G	1745*
Peace	A	1050*
Petrie	A C	1950
Proudler	V A	1620
Prych	G D	1920 (2250)
Quinn	D	1990
Reeman	I	2015
Reid	D R	2000*
Ross	J H	1520*
Ross	M	1900*
Rough	R E	1660*
Russell	T	1910
Sadowski	Z E	1870*
Savage	D J	1785
Scholes	G	1745*
Seyfried	J	2070
Shaw	A J	2125
Smith	R	1745
Sneddon	I	1245
Sprott	G R	1990
Stevenson	J A	1970*
Stewart	K W C	1900*
Sutton	J	1735*
Swann	A	1810*
Swystun	M A	1970
Tankel	A	2025
Taylor	A	1360*
Taylor	J	1380*
Taylor	T A H	1460
Thompson	I	1870
Vernon	J W	1620
Walker	J M	1515
Warren	K	1410*
Watson	J	1625*
Watson	W P	2135
Wickens	T S	2195 (2460)
Williams	J	1840
Wilson	A	1520
Wilson	R	1775
Wood	G	1930
Yianni	M	1570
Young	S D	1850*

The 1986 Doughty Bakers Dozen is on page 29.

SUPPLEMENTARY GRADING LIST

Players who have 20 recorded results against any grade of opponent or six results against recognised or provisionally graded players.

Adamson	A D	1265	Junnor	J P	1355
Anderson	K	1775	MacLeod	M	1970
Burgess	M R	2205	McLean	J	2070
Cowling	D G	1435	Robertson	M	1550
Cubie	J P	1285	Sloan	I	1455
Garvock	J	1500	Wallis	G	1830
Hammett	M	1980	Ward	J	1520
Jenkins	W	1515			



GAMES SECTION

Selected by Douglas Bryson

PLEASE SEND GAMES WITH ANNOTATIONS TO DOUGLAS M. BRYSON, 38 DUNCRYNE AVENUE, MOUNT VERNON, GLASGOW G32 0RQ.



Our first game comes from a BPCF Grand Open Round 2.

White: P.M. Giulian

Black: G. Trueman

Opening: Queens Gambit Accepted (D20)

- 1 d4 d5
- 2 c4 dxc4
- 3 e4 Nf6
- 4 e5 Nd5
- 5 Bxc4 Nb6
- 6 Bb3 Nc6
- 7 Be3?!

Allows Black easily equality. Better is 7 Ne2 or Nf3.

- 7 ... Bf5
- 8 e6?! Bxe6
- 9 Bxe6 fxe6
- 10 Nc3 g6
- 11 Nf3 Bg7
- 12 0-0 Qd7
- 13 Qb3 0-0-0

Not 13 ... 0-0, 14 Ng5 Nd5?, 15 Nxe6!

- 14 Ng5 Rde8
- 15 a4

- 15 ... Nd5
- 16 Rfd1?

Better is 16 Nxe6 Qxe6, 17 Nxd5.

- 16 ... Kb8.
- 17 Nce4 Na5
- 18 Qd3 b6!

I completely underestimated this move, after which Black is definitely better. It is very difficult to attack either the doubled e-pawns or the Black king.

- 19 Nd2 Rf8
- 20 Qa3 Rf5!

Prepares the doubling of the rooks and supports e5!

- 21 Nge4 Nxe3?!

Swaps a good knight for a bad bishop, better is 21 ... Rhf8, although perhaps best is 21 ... e5.

- 22 fxe3 h5?

Again better is 21 Rhf8.

- 23 b4 Nc6?

Better is 23 ... Nb7.

- 24 Racl

Not 24 b5! Nxd4!, 25 exd4 Bxd4+.

- 25 Kh1 Bxal.

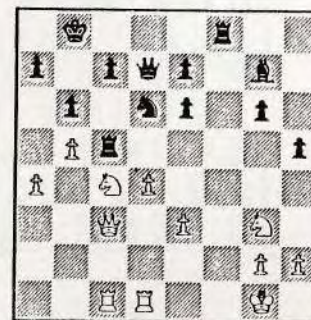
- 24 ... Rhf8
- 25 b5

Not 25 Qc3?? Nxd4!

- 25 ... Na5
- 26 Qc3 Nb7
- 27 Nc4?

Better is 27 Nf3.

- 27 ... Nd6
- 28 Ng3 Rc5?



- 29 dxc5! Bxc3
- 30 Rxc3 bxc5?

Better to allow cxd6 exd6. After the move played, the White knights are too powerful.

- 31 Ne5 Qe8
- 32 Rxc5 h4?

Drives the White knight into the attack!

- 33 Ne2 Rf5?
- 34 Nd4 Rf6

If 34 ... Rxe5, 35 Nc6+ followed by Nxe5.

- 35 Rdc1 Qc8
- 36 Ndc6+ Kb7
- 37 Na5+ Resigns

There is no defence, eg. (1) ... Kbb, 38 Nb3, with the threat of a5+ or Rc6+ followed by Nc5+; if (2) ... Kb8, 38 Ncc6+ Kc8, 39 Nxe7, followed by Rxc7.

(Notes by Phil Giulian)



1984-86 Candidates

White: D. Gillespie

Black: I. Marks

Opening: Kings Indian Defence (E69)

- 1 d4 Nf6
- 2 Nf3 g6
- 3 g3 Bg7
- 4 Bg2 0-0
- 5 0-0 d6
- 6 c4 Nbd7
- 7 Nc3 e5
- 8 e4 c6
- 9 h3 Qb6

I consider this the most logical move. From b6 the Q monitors the important a7-g1 diagonal and links up with the KB to pressurise d4 and b2.

10 Re1

This seems to weaken f2, but White remedies that with his 12th move.

10 ... exd4
11 Nxd4 Re8
12 Re2

An important alternative is 12 Na4, seeking to chase the Q off the dark-squared diagonal at the expense of decentralising the N.

12 ... Ng4

Black can also try 12 ... Qb4, but after 13 Rc2! Nc5, 14 Bd2 Qb6 White had, in my opinion, gained more than Black.

13 Rd2

(It seems that White has to be very careful in this line. For example, E.C.O. quotes Botvinnik-Geller: 13 Nc2 Nge5, 14 Ne3 Nc5, 15 b3? (tactical error) Bxb3!, and White is a pawn down for nothing, eg. 16 Bxb3 Nf3+, 17 Kg2 Bxc3. Games Ed.)

13 ... Nge5
14 b3 Nc5
15 Kb2

After the game, Dave Gillespie informed me that this is all given as "book" by Geller in his Batsford 'g3' monograph on the King's Indian.

Since my obviously deficient library did not include that volume, I was unaware of Geller's suggested continuation (15 ... a5) and played instead a move I had discovered some time before.

15 ... Ncd3!

(16 Na4! looks like White's last chance. 16 ... Qxd4, 17 Rb1 (with the idea of f4). Play could continue 17 ... b5, 18 f4 bxa4, 19 fxe5 Bxe5, 20 Rxd3 Qf2. Games Ed)



The White position is riddled with so many sensitive points that there must be a means of exploiting them. This leads me to think that Geller's 15 ... a5 is one of those "plants" which the Soviets are rumoured to include in their theoretical works in the hope that unsuspecting opponents will blindly follow a line in which the "primed" Soviet player can spring the unpublished improvement. Can we really believe that Geller, godfather of so many ideas in the King's Indian, was unaware of the N move?

16 Nc2

16 Rxd3 Nxd3, 17 Qxd3 Qxd4 is hardly an improvement.

16 ... Nxf2
17 Qe2

As good as any.

17 ... Neg4+
18 hxg4

Or 18 Kg1 Nxb3+, 19 Kh1/f1 Qg1 mate.

18 ... Nxg4+
0 1

White's pieces are dropping off at an alarming rate.

(Notes by Ian Marks)



The following game and notes are provided by Alan Borwell from his recent World Championship Semifinal XV encounter with Hungarian IM Laslos Monostori.

White: L. Monostori (HUN) 2445
Black: A.P. Borwell (GBR) 2315
Opening: QGD Slav Exchange Var (D14)

1 d4 d5

Normally I play Nimzo or Queen's Indian but, having lost an earlier game to my opponent in a World Master event several years ago, I thought I would try a different strategy.

2 c4 c6
3 Nf3 Nf6
4 cxd5

My first disappointment, as I was hoping to play some form of Meran Variation with ... dxc4.

4 ... cxd5
5 Nc3 Nc6
6 Bf4 Bf5
7 e3 e6

It is many years since I had a symmetrical position after 7 moves!

8 Bb5 Nd7
9 Qa4 Qb6
10 0-0

According to Polugaevsky, 10 Nh4 is better with a possible continuation being 10 ... Be4, 11 0-0-0 Rc8, 12 f3 Bg6, 13 Nxg6 hxg6, 14 Kbl a6, 15 Be2 Bb4, 16 Rcl 0-0, 17 a3 Bxc3, 18 Rxc3 e5, 19 dxe5 Ncxe5, 20 Rhcl Rxc3, 21 Rxc3 when White stands better with his two bishops and open lines.

10 ... Be7
11 e4!?

Very dynamic and dangerous!

11 ... Bxe4

Black really has little choice but to allow the opening of the position.

12 Nxe4 dxe4
 13 Nd2 0-0
 14 Be3 Qc7
 15 Rac1 Nb6!
 16 Qc2 f5!



Both defensive and aggressive - has White played too ambitiously?

17 Nb3 Nd5

Things are looking up now for Black - a pawn up and a knight on this key square.

18 Bd2 Rac8

Mainly to keep queens on the board to support K-side pressure.

19 Bxc6 bxc6
 20 Rfe1 Bd6
 21 g3 Qf7!
 22 Re2 Qh5

If 22 Na5 c5, 23 Nc4 Bb8, 24 Ne5 Qb7 was my intention.

23 Qd1 Nf6!

I didn't really want to move this knight but it seemed the only way to make speedy progress.

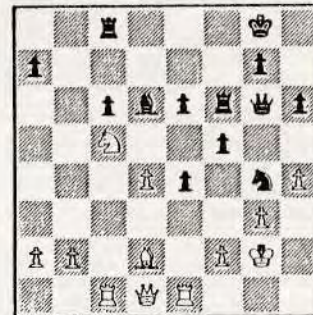
24 Nc5 Ng4
 25 h4

I spent several hours looking at sacrifices here, but decided that I had plenty of time to break through.

25 ... Rf6
 26 Re1 h6
 27 Kg2! Qg6

Again I would have liked to play more positively with say 27 ... g5 but 28 Rh1 seems to be good as both the knight is pinned and the pawn on e4 is vulnerable.

28 Rc3



The critical position. I considered 28 ... Bxc5, 29 Rxc5 f4, but 30 h5! is a nuisance. If 28 ... Nxf2, 29 Kxf2 f4, 30 Nxe4 fxc3 dis ch, 31 Kg1 was unclear. Obviously if 28 ... f4, then 29 Nxe4 is good! Therefore I decided it was the right moment to return my extra pawn.

28 ... e3!

The pawn must be taken but if by either rook then White would lose the exchange with a Black f4 to follow. If 29 fxe3 Bxc3! looks very strong, therefore:

29 Bxe3 f4!
 30 Bc1

Probably best. Not 30 Bxf4 31 gxf4, Ne3 dis ch wins the queen. 30 Bd2 fxc3, 31 fxc3 Rf2+, 32 Kg1 Qf5 etc.

30 ... fxc3

Not 30 ... Nxf2, 31 Kxf2 fxc3 dis ch, 32 Kg1, which is unclear.

31 fxc3

White's best chance here was 31 f3, when Black still has some work to do before achieving the full point.

31 ... Nf2!

This took a while to find - an entry for the Black queen is required.

32 Qe2 Qf5
 33 Bf4

I expected 33 g4 but ... Qd5ch and doubling of rooks on the f-file will be decisive.

33 ... Qh3+!
 34 Kxf2 Bxf4

35 Qa6

Desparation. If 35 gxf4 Rxf4+, 36 Rf3 Rxf3+, 37 Qxf3 Rf8 etc.

35 ... Qh2+
 36 Kf3 Rd8!

A nice touch which prevents White's king running away to the Q-side.

37 Ne4 Rf5!
 White resigns 0-1

If 38 gxf4 Rxf4+, 39 Ke3, then either 39 ... Rxe4+ or Qxh4 regains the piece and White's king will soon be mated.

(Notes by Alan Borwell)

↑ ↑
White: Stephen Hilton
Black: K. McKenzie
 SCCA Handicap 1985
Opening: Benko Gambit (A57)

1 d4 Nf6
 2 c4 c5
 3 d5 b5

The Benko Gambit, an ideal opening for correspondence play.

4 a4

The main lines with 4 cxb5 are too well analysed and not clearly favourable for White.

4 ... bxc4
 5 Nc3 g6
 6 e4 d6
 7 f4 Bg7
 8 Bxc4 Bb7
 9 Nf3 0-0
 10 0-0 a6?



I thought Ba6 was a better move.

11 Qe2 Nbd7
 12 e5! Ne8

(At least try 12 ... dxe5, 13 fxe5 Ng4. Games Ed.)

13 e6 Nb6
 14 exf7+ Rxf7
 15 Ng5 Rf6
 16 Nce4 Nxc4
 17 Nxf6+ Resigns

(Notes by Stephen Hilton)

 
 Finally, we have a game in English notation (we hope readers can still understand it now that we are all supposed to use algebraic!) Editor.

Scottish Championship Final 1985-87

White: B. Martin

Black: I.F. Reeman

Opening: Four Knights (C47)

Sometimes an extremely hard-fought draw can give almost the same sort of satisfaction that comes more naturally from an imaginative win, particularly if your position was worse - as was the case in this game.

The book "Romantic Chess Openings" took me right down the proverbial old garden path, and left me on my own to rot on the rubbish dump!

1 P-K4 P-K4
 2 N-KB3 N-QB3
 3 N-B3 N-B3
 4 P-Q4 PXP
 5 NXP B-N5
 6 NxN NFXN
 7 B-Q3 P-Q4
 8 PXP PXP
 9 0-0 0-0
 10 B-KN5 B-K3
 11 Q-B3

BCO gives 11 N-N5 as equal. In future I will revert to the old move 11 N-K2 which has an interesting statement attributed to it by Czerniak in Chess, Oct 1954! (Page 74). He states that after 11 N-K2 P-KR3, 12 B-R4 B-Q3, "White retains the better game by 13 N-Q4 P-QB4, 14 NxB, because of his two bishops and Black's weak KP."

11 ... B-K2
 12 QR-K1 R-N1
 13 P-QN3

Questionable but given in "Romantic Chess Openings" as okay. Cafferty & Hooper's book "A Complete Defence to P-K4" is more accurate, giving 13 N-Q1 but I discovered that too late! Funnily enough, the "Romantic" book (page 55) gives 13 N-Q1 as a sideline to 13 P-QN3, remarking only that

12 N-Q1 P-QB4, 11 B-B5 R-N3 and "Black has a good game". So it begins to look as if either 11 Q-B3 or 12 QR-K1 doesn't work out well for White.

13 ... B-QN5
 14 B-Q2 P-B4

"Romantic Chess Openings" gives only 14 ... Q-Q2, 15 P-KR3 with a small plus for White, mentioning "White's chances are preferable." But is that a correct assessment? I doubt it.

Anyway, with the arrival of Black's deviation with 14 ... P-B4, I suddenly awoke to the reality of just how horrible a position the book had left me with.

Not only is Black exploiting the glaring weakness on c3 with a nasty pin but he is compounding the fracture by charging his pawns towards it!

It's a pretty miserable feeling in postal chess to realise you have a "lost opening", especially when the moves you've been playing are "book" and not your own; and so, feeling pretty despondent and let down by it all, I now had to get the head down and burn the midnight oil.

After two days I still didn't like it! I also had "Postal Chess Players Posterior", which the common amongst you can interpret as a "numb bum".

Black's threat of 15 ... P-B5 looks crushing. After 16 B-B5 (and not 16 FxP PXP because 17 B-B5 is impossible because it leaves the other bishop to be picked up by the queen) ... P-Q5, 17 N-N1 (forced: for if 17 N-K4? which looks best, then Black plays ... NxN and if 18 BxB, White loses a piece to ... N-N4!) So, after 17 N-N1, Black can play ... P-B6 and he's on top.

I decided to remove the bishop from d3, and I could be wrong but I think it is about the best there is. He has too many options if I leave it there.

15 B-B5

If 15 N-N1 to relieve the pin, Black declines to exchange the bishops and plays ... Q-R4 instead.

15 ... BxB

I can't find fault with any of Black's moves, either up to here or in the rest of the game. Also good appears to be 15 ... P-Q5. White has to play 16 N-N1. (On 16 N-R4, again comes the unfortunate ... NxN, 17 BxBb4 and ... N-N4!)

Now Black has 16 ... Q-R4 (if ... BxB, 17 NxB serves only to help White), 17 BxBb4 PxB!, 18 BxB (Otherwise the queen is tied to the bishop's defence; or else 18 B-Q3?! QxRP).

After 18 ... PxB, Black always appears to be winning the rook-pawn and gains a superior position. Now I glanced at the risky-looking 19 RxF and felt that against ... N-Q4, White had 20 Q-Q3 (what else?) intending 21 R-R6 he can play 20 ... QR-B1. Now either 21 R-R6 QxBP or 21 QxQP RxP look good for Black because White's f2 is weak. Note that it was better to leave Black's KR on f8 because of this.

Instead of the text, I doubted if Black could play 15 ... Q-R4. Surely White can play 16 P-QR3!. Now 16 ... QxP would lose his queen, so he has to play either 16 ... BxR or 16 ... BxN, both of which are bad for Black. Well, he could play 16 ... BxN, 17 BxB, but now the QRP is taboo to the queen, so White would be okay in this line. Lastly, if 15 ... P-B5 instead of the text, I intended 16 BxB PxB, 17 Q-R3!

16 QxB Q-R4

(On 16 ... P-Q5 I was now able to play 17 N-K4).

17 Q-Q3 P-B5
18 Q-Q4 PxP
19 BPxP

I didn't like the look of 19 RPxP KR-B1, 20 R-K3 B-B4, 21 NxP BxQ, 22 N-K7ch (or 22 NxNch PxN, 23 R-N3ch K-B1 24 BxQ RxP) ... K-B1, 23 BxQ BxR, 24 NxR RxN, 25 PxB RxP.

It could be drawable after either of the 22nd moves but I had other things in mind which I felt gave me better chances of salvaging some counterplay and even some tactical winning chances.

19 ... R(B1)-QB1

Not so good is 19 ... BxN, 20 BxB QxRP, 21 R-K3.

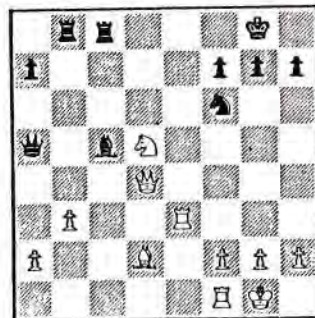
20 R-K3!

I'd no intention of playing passively with 20 R-B1. In playing this I had to calculate some extremely risky, hair-raising lines which take us right up to the end of the game, eight moves (each) from now.

20 ... B-B4

As expected. If 20 ... BxN?!, 21 BxB QxP, 22 P-KN4! Or if instead 20 KR-B3, 21 R-KN3! R(1)-QB1 doubling rooks to exploit c3, then I play 22 N-K4! Fireworks!

21 NxP!



21 ... PxB
If 21 ... NxN, 22 QxN QxF, 23 R-KR3 and Black seems to be in trouble.

22 N-K7ch K-B1
23 BxQ R-B4!

A good move. White is in critical danger of losing a piece.

Fortunately, I'd seen this coming and has calculated a subtlety to hang on by the skin of my teeth ...

24 R-K2 R-N2!

If 24 ... RxB, 25 N-B6 gets the piece back! And if 24 ... R-K1, 25 B-N4! RxN, 26 R-Q2 R-Q4 (threatening 27 ... B-B4) 27 BxRch KxB, 28 R(1)-Q1 BxPch, 29 KxB N-K5ch draw.

25 R-Q2!

This is my little "subtlety". All else fails. Later on Ian said he overlooked it but it isn't easy to see, possibly because on move 24 you also have to see it. (If 24 ... R-N2! hadn't been anticipated and this rook had gone to another square, Black would be winning.)

25 ... RxB

If 25 ... RxN, 26 B-N4 or if 25 ... KxN, 26 R-K1ch K-B1? (... R-K4 27 RxB is equal at least!) 27 RxB RxB?, 28 R-Q8ch!

26 N-B6 B-N3

Or 26 ... B-B6, 27 R-Q8ch N-K1, 28 R(1)-Q1 threatening mate. For example, 29 RxNch KxR, 30 R-Q8ch mate. So Black plays 28 ... P-B3, 29 NxR BxN. I may have continued 30 R-Q7 RxR, 31 RxR B-N3, 32 P-QR4 and 32 P-QN4.

27 NxR BxN
28 R-K2

At this point I asked for a draw and it was accepted. I'm not sure who is better. I felt there was sound and exciting play from both sides of the board and that a draw was about right. But, oh that c3 weakness!

(Notes by Brian Martin)

THE 1986 DOUGHTY BAKERS DOZEN

This list shows those SCCA players who achieved the best results in eight or more completed games in the last season. The number of games has been reduced to eight to incorporate the Scottish Championship.

1.	D.M. Bryson	2555
2.	G.J. Morrison	2545
3.	A.J. Norris	2510
4.	C.R. Beecham	2360
5.	P.M. Giulian	2335
6.	S.R. Mannion	2285
7.	B.J. Martin	2265
8.	T.S. Wickens	2190
9.	T.J. Craig	2130
10.	G.W.G. Livie	2110
11.	A. Tankel	2040
12.	J.A. Stevenson	2020
13-15.	G.H. Bird	2010
13-15.	G.A. Morton	2010
13-15.	D. Quinn	2010

international events

by Richard Beecham.

We started two new Internationals recently against Israel over 25 boards and Italy over 20 boards. The pairings for the Italian match are given below.

I have been in contact with the Correspondence Chess League of Australia and they are very interested in a match of between 25-30 boards. I hope to have this match arranged before I stand down as International Secretary at the next AGM.

Now some information about our Ladies; Mrs. Rosie Giulian has been nominated to take part in a new Ladies Individual European Championship starting in May 1987 with a preliminary round of 9 to 11 players and a Final of between 11 to 15 players. The winner will receive the title "International Lady Master". Four of our ladies are taking part in the Ladies Correspondence Chess Olympiad Semifinals IV. They are at Board 1 Mrs. M. Inglis, Board 2 Mrs. E.A. Hartford, Board 3 Miss A. McLure and Board 4 Mrs. M. McGhee. The cross-tables appear on the next page, and we wish our ladies success!

The team captain of Poland has asked me to extend this match until 31st December 1987 as only about 20% of the games have been completed. Moves to and from the Ukraine are very slow - I would recommend sending your international postcards in envelopes; postcards just seem to get lost in the system!

Finally, I should like to close this column by thanking all those who sent in results and for all the friendly phone calls! You're not getting rid of me that easily though, I shall still be working on the domestic front! Best wishes to my successor

Bd	Scotland	Sc	It	Italy
1	S.R. Gillam			G. Santoro
2	G.D. Pyrich			D. Valentini
3	K.W.C. Stewart			P. Serrano
4	C.R. Beecham			L. Alagna
5	I.A. Marks			M. Simonini
6	I. Mackintosh			G. Bastianelli
7	T. McMorran			E. Sgro
8	D. Savage			M. Polo
9	K.D. Anderson			F. Leone
10	M. McGhee			M. Albrizio
11	I. Marshall			U. Bleve
12	R. Mitchell			F. Tosi
13	D.G. McRoberts			G. Bifulchi
14	Z.E. Sadowski			F. Forzoni
15	J. O'Donnell			M. Tinari
16	J. Ward			A. Rajola
17	A. Wilson			E. Bettelli
18	J. Stallard			S. Bonfiglio
19	J. McMenemy			C. Albrizio
20	J. Ross			R. Saranga

Editor's Postscript

In the Town Teams Tournament organised by Poland, Glasgow are off to a fine start with Douglas Bryson (2575) defeating I.A. Kopilow of Soviet Union (2580).

LADIES CORRESPONDENCE CHESS OLYMPIADE - SEMI-FINAL IV SECTION 1

Nº	BOARD 1	TEAM	1	2	3	4	5	6	7	8	Points	Place
1	B. KACZOROWSKA	PL	<input type="checkbox"/>									
2	M. INGLIS	GBS		<input type="checkbox"/>								
3	L. VAYRYNEN	SF			<input type="checkbox"/>							
4	A. SUKHININA	SU				<input type="checkbox"/>						
5	G. THORSTEINSDOTTIR	IS					<input type="checkbox"/>					
6	A. KNECHT	CH						<input type="checkbox"/>				
7	G. NACHIMANN	FRG							<input type="checkbox"/>			
8	G. SCHDISSWHDHL	A								<input type="checkbox"/>		

Nº	BOARD 2	TEAM	1	2	3	4	5	6	7	8	Points	Place
1	H. SALABUN	PL	<input type="checkbox"/>									
2	E. HARTFORD	GBS		<input type="checkbox"/>								
3	I. ALHO	SF			<input type="checkbox"/>							
4	V. STERNINA	SU				<input type="checkbox"/>						
5	O. TRAINSDOTTIR	IS					<input type="checkbox"/>					
6	C. BAUMANN	CH						<input type="checkbox"/>				
7	I. SCHADE	FRG							<input type="checkbox"/>			
8	H. MIRA	A								<input type="checkbox"/>		

Nº	BOARD 3	TEAM	1	2	3	4	5	6	7	8	Points	Place
1	I. KONDRACKA	PL	<input type="checkbox"/>									
2	A. Mc LURE	GBS		<input type="checkbox"/>								
3	M. VOUTILAINEN	SF			<input type="checkbox"/>							
4	I. PRIEDITE	SU				<input type="checkbox"/>						
5	G. GRETARSDOTTIR	IS					<input type="checkbox"/>					
6	E. LUSSY	CH						<input type="checkbox"/>				
7	C. BLODIG	FRG							<input type="checkbox"/>			
8	M. HORVATH	A								<input type="checkbox"/>		

Nº	BOARD 4	TEAM	1	2	3	4	5	6	7	8	Points	Place
1	B. KOPEC	PL	<input type="checkbox"/>									
2	M. Mc GEE	GBS		<input type="checkbox"/>								
3	A. PIETILAINEN	SF			<input type="checkbox"/>							
4	L. KOROLJKOVA	SU				<input type="checkbox"/>						
5	A. KRISTINSDDTTIR	IS					<input type="checkbox"/>					
6	J. HAJDU	CH						<input type="checkbox"/>				
7	B. BARTHEL	FRG							<input type="checkbox"/>			
8	I. KATTINGER	A								<input type="checkbox"/>		

TEAM CAPTAIN : C.R. BEECHAM

OLYMPIAD RESULTS

TEAM CAPTAIN : K.B. McALPINE

PRELIMINARY ROUND — SECTION 2

See page 38 for current totals.

European continued...

See page 38 for current totals.

BOARD 1 K.B. McALPINE vs opponents: STEINER, ARNLIND, AHMAD, UMANSKI, INGERSLEV, BURGER, McALPINE, KUZOLS, DONNELLY, POKRAJSEK, WEINER, BERRY.

SCOTLAND WHITE AGAINST CH, PK, DK, AU, YU

BOARD 2 D.M. BRYSON vs opponents: BEZZOLA, SVENINGSSON, MIRZA, SEREBRISKI, QUIST, STERN, BRYSON, HAMILTON, LEVY, MAJSTOROVIC, JEZEK, WRIGHT.

SCOTLAND WHITE AGAINST SW, SU, DDR, ZI, CS

BOARD 3 T.S. WICKENS vs opponents: FAUVEL, WALTER, VARLAMOV, WICKENS, MCAREE, MULLNER, SARAJEVO, PETTERSSON.

BOARD 5 G.W.G. LIVIE vs opponents: VIAUD, WASNAIR, SCHLACHTKA, KORELOV, LIVIE, DOYLE, BAUMER, AZEOD, JHOLIN.

BOARD 7 C.R. BEECHAM vs opponents: ROGEMONT, JOSEPH, MÖCKEL, IVANOV, BEECHAM, SIOCHRU, SZILAGYI, S. MARQUES, CARLSSON.

BOARD 9 G.D. PYRICH vs opponents: WEIRICH, HERZFELD, WERNER, JIVOODOV, PYRICH, MARTIN, SÖREGHY, FERNANDES, CARNSTAM.

BOARD 11 J. Seyfried vs opponents: POESSON, VHEE, LEHMANN, GORNIAN, SHAW, MÜLLER, RALHA, ANDERSSON.

BOARD 4 T.J. CRAIG vs opponents: ROCHE, JONAN, DRESCHER, FOIGEL, CRAIG, DILLON, FODOR, LAVRADOR, FAGERSTRÖM.

BOARD 6 A.J. SHAW vs opponents: MAUREL, de POTTER, FRANKE, PIAEREN, SHAW, MONTGOMERY, OOBAS, HORTA, SVENSSON.

BOARD 8 A.J. McClelland vs opponents: GUERLINGER, MASSCHAELE, KAHN, GUSAKOV, McClelland, BRIDGEMAN, FODOR, Oliveira, ERLANSSON.

BOARD 10 A. GRANT vs opponents: BARON, PAROON, SCHÜTZE, SKOTORENKO, GRANT, ADAMSON, BEZI, ABRANTES, CARLSSON.

BOARD 12 A.T. HISLOP vs opponents: MAUMEY, CALLENS, TEMPELHOFF, MOLCHANOV, HISLOP, SHOULDICE, SARKOZI, MOURAIO, HAGLUND.

BOARD 3 D.A. KILGOUR vs opponents: CHRISTOFFEL, ANMAN, SAEED, ZAFAR, MILUTIN, NIELSEN, ANTON, KILGOUR, LEVIN, JUSTUS, BONAK, ZAPLETAL, UGGE.

COLOURS AS BD 1

BOARD 2 A.P. BOWWELL vs opponents: JANZEK, NERNDT, MIR, RUSAKOV, JENSEN, KREYSCHMAR, BOWWELL, HENRI, LEEPER, MILICEVIC, SMRCKA, AYLESTOCK, CLEEVE.

COLOURS AS BD 2

BOARD 5 P.M. GIULIAN vs opponents: STILLING, NYMAN, WAQAR, ZAFAR, KOSCHIL, GRANBERG, DANBERG, GIULIAN, BARBER, GULAB, KLAIC, SPODNY, DOUTHWAITE.

COLOURS AS BD 1

BOARD 6 R.W.M. BAXTER vs opponents: CORNU, CARLSSON, ALI-NADI-ZAIDI, PITSCHELKIN, RASMUSSEN, KÖHNHICH, BAXTER, HARRISON, KATZ, LUKIC, PRIVARA, PARE.

COLOURS AS BD 2

BOARD 1 D.M. JENKINS vs opponents: LELIEVRE, CAMPEERT, KAHN, GUTOP, JENKINS, HARDING, SCHRANZ, A.S. SEQUEIRO, SELBERG.

BOARD 2 S.R. GILLAM vs opponents: LEMAIRE, LEROY, FIENSCH, SAGOROWSKI, GILLAM, GIBSON, KOVACS, AZEVEDO, KORMAN.

2nd North Atlantic Team Tourney

See page 38 for current totals.

BD. 1	P. M. GIULIAN	I.M.=75%	TEAM	1	2	3	4	5	6	7	8	9	10	Pts.
1	E. GIBNEY		IRL	0	1/2	1/2	1/2	1/2						
2	A. B. MOURA		POR	1									1/2	
3	A. M. STEWART		GBE	1/2		1/2		1		1				
4	P. A. LAMFORD		GBW		1/2					1/2	1/2			
5	K. V. GRIVAINIS		USA	1/2								1		
6	Z. L. SAROSY		CAN		0									
7	F. CHEVALDONNET		FRA	1/2										
8	P. M. GIULIAN	●	GBS		0	1/2								
9	E. PASCUAL		SPA			1/2								
10	J. A. PALSSON		ICE	1/2		0								

BD. 2	T. S. WICKENS	1/2 I.M.=65%	TEAM	1	2	3	4	5	6	7	8	9	10	Pts.
1	A. DOYLE		IRL	1	1	1	1/2	1/2	1/2	1	1/2	1/2	6 1/2	± NORM
2	V. C. ABRANTES		POR	0	0			1/2	1/2	0				
3	T. THOMAS		GBE	0	1	1/2	0	1/2	1	1	1			
4	J. D. THORNTON		GBW	0	1/2	1/2	1/2	1/2	1/2	1/2				
5	S. GRANT		USA	1/2	1	1/2	1/2	1/2	1/2	1/2				
6	A. J. UGGE		CAN	1/2	1/2	1/2	1/2	1/2	1/2	1/2				
7	E. SAVOSTIANOFF		FRA	1/2	1/2	1/2	1/2	1/2	1					
8	T. S. WICKENS	●	GBS	0	0	1/2	1/2	0						
9	R. CRUSI		SPA	1/2	1	0	1/2					1/2		
10	H. OLAFSSON		ICE	1/2	0	1/2	1/2	1/2	1/2	1/2				

BD. 3	G. MORRISON	1/2 I.M.=70%	TEAM	1	2	3	4	5	6	7	8	9	10	Pts.
1	T. FAYNE		IRL	0	0	0	0	0			0	0		
2	R. M. LAVRADOR		POR	1		1	1/2	1/2	1/2					
3	M. ALCOCK		GBE	1		1	0			1/2				
4	D. K. EVANS		GBW	1	0	0	1/2			0				
5	K. K. DEHMELT Jr.		USA	1	1	1/2	1	1	1/2					
6	Z. LESKOWSKY		CAN	1/2		0	0	0						
7	A. DOBRININE		FRA						0					
8	G. MORRISON	●	GBS	1	1/2	1/2	1	1	1	1	1/2	1	7	± IM norm
9	L. LLAVERIAS		SPA	1/2							1/2			
10	J. Th. THOR		ICE	1							0			

BD. 4	A. J. NORRIS	1/2 I.M.=70%	TEAM	1	2	3	4	5	6	7	8	9	10	Pts.
1	T. D. HARDING		IRL		0	1	1/2	1/2	0	1/2	0			
2	V. L. CORDEIRO		POR		1	1/2			0	1/2	1/2			
3	P. J. SOWRAY		GBE	1	0	1	1			1/2		1		
4	C. I. PRICE		GBW	0	1/2	0	0	0	1	0	1			
5	M. E. ZAVANELLI		USA		0	1	0	0						
6	B. V. DOUTHWAITE		CAN	1/2			1			0				
7	J-M. MASUREL		FRA	1/2	1	0	1			0	1	1		
8	A. J. NORRIS	●	GBS	1	1/2	1/2	1	1	1	1	1	1		
9	A. PADROS		SPA	1/2	1/2				0	0	1/2			
10	B. MAGNUSSON		ICE	1	0	0			0	0	1/2			

continued ..

TEAM CAPTAIN : G.R. MONTGOMERY

BD. 5	T. J. CRAIG	1/2 I.M.=75%	TEAM	1	2	3	4	5	6	7	8	9	10	Pts.
1	R. MONTGOMERY		IRL	0	1/2	1			0	1/2				
2	J. O. SOUSA		POR	1	1									
3	T. CHAPMAN		GBE	1/2	0	1/2	0	1/2	0	1	1/2	0	3	
4	R. M. BOLLEN		GBW	0	1/2	1	0	0	0					
5	B. F. GIBBONS		USA		1					1/2				
6	C. PARE		CAN		1/2	1								
7	A. LELIEVRE		FRA	1	1	1				1				
8	T. J. CRAIG	●	GBS	1/2	0	1	1/2	0						
9	J. PAREDES		SPA		1/2									
10	J. HALF DANARSON		ICE			1								

BD. 6	C.R. BEECHAM	1/2 I.M.=75%	TEAM	1	2	3	4	5	6	7	8	9	10	Pts.
1	J. F. GIBSON		IRL			1	1/2			1			1/2	
2	R.S. RALHA		POR		1	1		1	1					
3	J.E. HAWKES		GBE	0	0	0	0	1	0	1/2	1			
4	G. CANTELLO		GBW	1/2	0	1	1/2	1/2	1/2	1	0	1/2	4 1/2	
5	Dr. J. EVENTOV		USA		0	1/2	1/2				0			
6	R.E. SIEMMS		CAN	0	0	1/2								
7	P. BELLUIRE		FRA	0	0	1	1/2						1/2	
8	C.R. BEECHAM	●	GBS			1/2	0	1				1/2		
9	J. BOADA		SPA			0	1							
10	B.J. KARLSSON		ICE	1/2			1/2			1/2	1/2			

BD. 7	G.D. PYRICH	1/2 I.M.=80%	TEAM	1	2	3	4	5	6	7	8	9	10	Pts.
1	D. FENNELLY		IRL			0	1				0			
2	N.S. AMARAL		POR											
3	D.J.R. BARNES		GBE	1		1		1/2		1	1			
4	J. TIPLADY		GBW	0	0	0		0	1/2	1/2	1/2	1/2		
5	G. O. BERRY		USA										1	
6	D. MacLEOD		CAN		1/2	1			1				1/2	
7	F. FARCY		FRA			1/2			0	1/2			1	
8	G. D. PYRICH	●	GBS	1	0	1/2			1/2					
9	F. J. MUNOZ		SPA			1/2								
10	T. SAEMUNDSSON		ICE		0	1/2	0	1/2	0					

BD. 8	S.R. MANNION	1/2 I.M.=80%	TEAM	1	2	3	4	5	6	7	8	9	10	Pts.
1	O. O' SIOCHRU		IRL			1/2					0	1		
2	P. M. PALHARES		POR											
3	P. F. TIMSON		GBE			1				1	1/2	1		
4	K. O. JONES		GBW	1/2	0					0				
5	R.A. HAAG Jr.		USA					1		1/2	0			
6	L. NEUBAUER / J.F. CLEEVE		CAN				0	0	0	0	1			
7	H. PINSON		FRA		0	1		1		0		1/2		
8	S. R. MANNION	●	GBS	1	1/2	1/2	1	1	1				0	
9	J. L. LOPEZ / C.FLORES		SPA	0	0	1	0							
10	B. THORBERGSSON		ICE							1/2	1			

OLYMPIAD PRELIMINARY GROUP

Points scored (games to finish)

Bd	CH	SW	PK	SU	DK	DDR	GBS	AU	ZI	YU	CS	CA
1	4½	5	2(3)	9½	6	5½	7	4(1)	9	7½	5(1)	5½(1)
2	5½	6	5	5½	3½	8½	7½	5½	1½	2	3	6½
3	5½	6	½	5(3)	5½(1)	7(1)	6½	5	2½(1)	4½(1)	3½(1)	2½(4)
4	7½	8½	3	7(3)	8½	5(1)	3(1)	3(4)	½(2)	4½(1)	3	1½
5	4½	5½	1½(2)	6(3)	9	7½	6	6(1)	1(1)	7½	5(1)	2½
6	5	8	1	5½(1)	5	9	5½	5(2)	1½(2)	3½	3(1)	6
	32½	39	13(5)	38½(10)	37½(1)	43½(2)	35½(1)	29½(8)	7½(6)	35½(3)	37½(4)	24½(5)
%	49%	59%	21%	69%	58%	68%	55%	51%	13%	55%	60%	40%
Pos	9	4	11	1	5	2	7	3	12	6	2	10

EUROPEAN TT PRELIMINARY GROUP

Points scored (games to finish)

Bd	FRA	BEL	DDR	SU	GBS	IRE	HUN	POR	SWE
1	5½(1)	½	4½	3(4)	4(2)	3½(1)	4	2½(2)	3(2)
2	5½	2	6	3½(2)	4(1)	2½	5	1½(1)	4
3	½	7	2½	3½(4)	4½(1)	2(1)	5	2½(1)	4½(1)
4	4	1½	4(3)	3½(4)	3½(1)	0	3½(3)	1½(2)	4½(1)
5	4	3(1)	6	4½(1)	2½	6	2½	½(2)	5
6	7(1)	0	3½(1)	4(4)	4(1)	2½(2)	5	2½	3½(1)
7	3½	3½	4½	6½	4	4½	3	3½	2
8	4½	½	4	6(1)	1	2	6	6	5(1)
9	3½(2)	4½	2½	2(4)	3(1)	3½	4½(1)	2½(1)	5(1)
10	4½	2	5	3(1)	3	2(2)	5(2)	4	4½(1)
11	3½(2)	3½	3(1)	2(6)	2½(1)	1(2)	3(3)	3½(1)	5(2)
12	3½(1)	4	4	6½(1)	2½	½(1)	3½(2)	5½	3(1)
	49½(7)	32(1)	49½(5)	48(32)	38½(8)	30(9)	50(11)	39(10)	49(11)
%	56%	34%	54%	75%	44%	34%	59%	45%	58%
Pos	4	9	5	1	7	8	2	6	3

2nd NORTH ATLANTIC TEAM TOURNEY

Points scored/games completed

Bd	IRB	POR	GBE	GBW	USA	CAN	FRA	GBS	SPA	ICB
1	1½/4	1½/2	3/4	1½/3	1½/2	0/1	½/1	½/2	½/1	½/2
2	6½/9	1/5	5/8	2½/6	3½/6	3/6	3/5	1/4	2½/5	2/5
3	0/6	3½/5	2½/4	1½/5	4/5	½/3	0/1	7/9	1/2	1/2
4	2½/7	2/4	4½/6	2½/7	1/4	1½/3	4½/7	7/8	1/4	1½/6
5	2/5	2/2	3/9	½/5	1½/2	1½/2	4/4	2/5	½/1	1/1
6	3/4	4/4	2½/7	4½/9	½/3	½/2	2/5	2/4	1/2	2/4
7	1/3	0/0	4½/5	2/7	1/1	3/4	2/4	2/4	½/1	1/4
8	1½/3	0/0	3½/4	½/3	1½/3	1/4	2½/5	4/6	1/4	1½/2
	18/41	14/22	28½/47	15½/45	14½/26	11/25	18½/32	25½/42	8/20	10½/26
%	44%	64%	61%	34%	56%	44%	58%	61%	40%	40%
Pos	7	1	3	10	5	6	4	2	9	8

Reader's letters :-
LETTER RECEIVED FROM ALLAN HISHOP

"I would like to comment on the fees for Life Membership as set out by Michael Dyer in his letter to the December 1980 issue of the magazine.

I was in favour of LM when it was introduced and thought that only a relatively few would take up the offer, which cost £10 as against an annual sub of £1. Very quickly we had 50 LMs which I felt was too high a proportion of the membership numbers at that time. From mid-1980 to mid-1983, the fee was raised to £20, which was approx six times the annual sub, and during that period there were another 12 new LMs. This seemed to be a reasonable increase in LMs as a proportion of the expanding membership numbers. From mid-1986 to date, the LM fee was raised to £50 which is eight times the annual sub and we have had no increase in the LM numbers. Now whether this is a bad or good thing depends on the aims of "Life Membership" and its benefits to us as an Association. Do we want more LMs and running at what proportion of the membership as a whole?

The next few years will show if the £50 fee has halted the numbers of LMs to a small trickle and it will take a lot of discussion to decide the issue. I personally feel that an LM fee tied to eight times the annual sub is the correct one and I hope that the members will give their opinions to the Editor or at the next AGM."

LETTER RECEIVED FROM RICHARD BIRCHAM

"I read with interest the comments of Brian Martin and Douglas Bryson with regard to the pros and cons of Algebraic and English Descriptive notations in the Bulletin 21/22 Games Section.

I should like to comment on a recent problem I had as a controller. Both players started the game with Algebraic but instead of using lower case for the files they used capitals, for example, e4 was E4 and f5 was F5. Both players then changed to English Descriptive and then back to Algebraic by move 10!

The problem arose with the move N(b)-Q2. White stated the move was the Queen's Knight to Q2, arguing the "(b)" was the QN file, and Black argued that the "(b)" referred to the knight on KB3, the knight on the bishop's file, to Q2!

I like Douglas Bryson's argument for postcards rather than score-sheets where one has to correctly repeat one's opponents move before one's own move becomes valid.

I would go one step further than Douglas and recommend that we convert to a system which is clear and precise and eliminates all the faults of Algebraic and English Descriptive, this wonderful system is the Numerical Notation system used in all ICCF events.

Each square is identified by a two figure code number, eg. QN1 or b1 becomes 21. Moves are indicated by putting first the square of origin and then the square of destination thus giving a four digit number, eg. QN Q2 or N(b1)-d2 becomes 2142. A complete description of the system can be found in the Rules Brochure.

The only problems with this system that I can see are emotional, "the numbers lack character" and could be described as "clinical". Also, writing out your opponent's address every move can be a hind.

Having used all three systems over a number of years, I much prefer to use the numerical notation system. It is much easier for me to enter the moves into my home computer file. I only have four digits to enter for each move rather than eight digits required for the move N(b1)-d2.

I would be interested to hear any other views through this column on notations. Whether we ever change from the out-of-date English Descriptive is entirely up to the Executive Council, but I shall be lobbying strongly for a postcard system to be adopted in future seasons at the next Executive meeting and at the AGM if necessary. The numerical system may have to wait for some time....."

**Winning Continuations
from page 18
Solutions**

The positions this time are all from French C.C. games selected by John Hawkes (who now resides in Marseille!)

A 1 f7+! 1 : 0

If 1 ... Kd8, 2 Rg8+ etc or
1 ... Kf8, 2 Rxc4 hxc4, 3 Ne6 mate.

Mariette v Roque - French CC Ch 1976

B 1 Ne5! Be6, 2 Bxe6 1 : 0

If 2 ... fxe6, 3 f7+ mate.

Folrier v Epinoux - French CC Hand.
1976

C 1 h4!! 1 : 0

If 1 ... Qd8/h5, 2 Nge7+ Kh8, 3 Qf6+
mate.

Berriot v Henry - AJEC - FCS1 match

D 1 Rxb5+! 1 : 0

If 1 ... gxb5, 2 Qf5+ Kh6, 3 Be2!
with mate to follow.

Rodriguez v Leconte - AJEC Tourney
1985

E 1 Bxb7+! Kxb7, 2 Qb5+ Kg8,
3 Bxc7! Kxc7, 4 Rf3 1 : 0

Kesmaecker v Audoin - Coupe Europe
Echecs '85

F 1 Rxd5! cxd5, 2 Ne6+ Kf7, 3 Nxf8
Kxf8, 4 g4! Ke7, 5 b4! 1 : 0
An instructive conversion.

Simon v Rodenas - ICCF WT(H) Class

Readers' letters/articles etc

This Bulletin was instigated to encourage members to express views about their Association and its activities, and all contributions will be welcomed:

- Articles - to the Editor
- Games - to the Games Editor
- Letters - to the Editor, the Secretary or any of our Controllers or Executive Committee Members

FERNSCHACH, the official monthly magazine of the International Correspondence Chess Federation (ICCF)

Contains interesting games, all ICCF results and news of World and European Team and Individual competitions. Indispensable for all serious CC players.

Obtainable at £13.00 per annum from Chess Suppliers (Scotland) Ltd., PO Box 67, 15 Hope Street, Glasgow G2 6AB

Many of the players in ICCF like to write in English, but a useful little phrasebook is available, price 6 swiss francs from E.Larsson, Box 38, S-244 03 DOSJEBRO, Sweden (send equivalent in sterling bank notes)

Previous News Bulletins

We have a limited supply of previous News Bulletins available. These can be obtained at 50p per copy or £5 for a set of issues nos. 1 to 10, inclusive of postage, from :-

A.P.Borwell, 8 Wheatfield Avenue,
Inchture, Perthshire.

CHESS SUPPLIERS (SCOTLAND) LTD.

041-248-2887 (24 hour answerphone)

P.O. BOX 67

1st Floor

15 HOPE St.

GLASGOW G2 6AB

showroom open

Every day 10-30am to
5-00pm, excluding
Sundays and Mondays



THE CHESS SPECIALISTS for individuals,
clubs, schools and libraries

ORDERS ACCEPTED BY MAIL ORDER

**SCOTTISH CHESS
ASSOCIATION**, est 1884

FULL DETAILS REGARDING ACTIVITIES AND MEMBERSHIP.....
FROM S.C.A. SECRETARY.....

Mrs L. Morrison
44 Stewart Clark Ave.
South Queensferry
West Lothian EH30 9QH

**BRITISH POSTAL CHESS
FEDERATION....**

Details BPCF Secretary.....

M.C. PELTZ
14 Linden End,
AYLESBURY,
Bucks.

It's unwise to pay too much

but it's unwise
to pay too little.
If you deal with
the lowest bidder,
it's well to add
something for
the risk you run.
And if you do that,
you will have
enough to pay for
something better.

John Ruskin

The next move is up to you!

get full value from

**General
Accident**

Honestly, it's the best policy.