



scottish
correspondence
chess
association

NEWS BULLETIN

Main Contents

AGM Minutes & Accounts
Tim Wickens - new Scottish Champion
ICCF History of Titles
International Results
Games Section

No. 24 August 1987

75p

		Tel. No.
President (& Editor, News Bulletin)	Alan P. Borwell 8 Wheatfield Avenue, Inchture, Perthshire PH14 9BY	0030-09556
Vice President	George W.G. Livie 34 Laggan Road, Newlands, Glasgow G44 2SY	041-637-0722
Secretary	Alan Hind 6 Struan Road, Cathcart, Glasgow G44 3AT	041-637-4102
Treasurer	George D. Pyrich 53 Dunnikier Road, Kirkcaldy KY1 2RL	0592-204133
Assistant Secretary	Douglas M. Livie 58 Elmore Avenue, Glasgow G44 5AY	041-637-1936
International Secretary	Philip M. Giulian 10 Broomfield Ave, Newton Mearns, Glasgow G77 5HR	041-639-1234
Grading Officer	Graham Wood, 27 Malcolm Crescent, Monifieth, Dundee DD5 4RT	0382-533625
Publicity & Membership Officer	C. Richard Beecham 28 Morris Road, Prestwick, KA9 2JW.	0292-76984
Other Executive Council Members	Allan T. Hislop, 4 Ascog Street, Glasgow G42 7JN Alan J. Shaw, 48 Quarryknowe, Rutherglen, Glasgow	041-423-0318 041-248-2887
Honorary Life Member	Bernard B. Partridge	
Life Members	D.G. Anderson, G.M. Anderson, K.D. Anderson, C.R. Beecham, P.G. Bennett, Prof. G.H. Bird, A.P. Borwell, D.M. Bryson, B.W. Chalmers, G.G. Chalmers, I.J. Craig, D. Crichton, D.H. Dempster, R. Dickson, J. Eadie, R. Gibson, P.M. Giulian, A.B. Glass, J.R. Gracie, B.W. Grant, Dr. M.C. Grayson, M.A. Hammett, Mrs. E. Hartford, A.T. Hislop, V.J. Hutchison, R.M. Innes, J.P.E. Jack, R. Jackson, D.M. Jenkins, D.A. Kilgour, D.M. Livie, G.W.G. Livie, J.P.L. Lumden, K.B. McAlpine, J.M. MacArthur, A.J. McClelland, D. McCracken, A. McPadyen, Mrs. M. McGhee, M.E. McGhee, D. McKerracher, J. Mackintosh, T. McMorran, J.E. McNeill, D.G. McRoberts, J. McTaggart, I.A. Marks, I. Marshall, R. Mitchell, G.A. Morton, A.J. Muir, J.S. Murray, Dr. V.A. Nye, A.J. Norris, T. Paterson, A. Pearcey, V.A. Proudler, D.R. Reid, V.S. Roach, T. Russell, D.J. Savage, J. Seyfried, A.J. Shaw, G.R. Sprott, W.S. Smerdon, Dr. K.W.C. Stewart, M.A. Swystun, A. Taylor, T.A.H. Taylor, I. Thompson, J.M. Walker, W.P. Watson, T.S. Wickens, A. Wilson	

INDEX OF CONTENTS

	Page(s)		Page(s)
Editorial/Secretarial Notes	1	Winning Continuations	13
Scottish CCA AGM Minutes	2/3	Book Reviews	14/15
Scottish CCA Financial Accounts	4/5	ICCF History of Titles	16/23
Championship/Candidates 1985/7	6	Games Section	24/32
Championship/Candidates 1986/8	7	International Report	33
Premiers/Majors/Quartets	8	Olympiad/European IT	34/35
Openings/Handicap	9	2nd North Atlantic IT	36/37
Scottish CCA League 1986/7	10/11	Readers' Letters	38/39
Scottish Centenary International Tourney	12	Winning Continuations Solutions	40
ICCF Thematic Tourneys	12	Articles, Notes etc	40

This edition has a strong international flavour and it will be published just prior to this year's most important ICCF Congress in the Netherlands, where "4-year" elections will be held for all principal office-bearers. After more than 40 years as ICCF President, Hans-Werner von Massow will retire from office and it is anticipated that General Secretary, Henk J. Mostert of the Netherlands, will be his successor. The Scottish Correspondence Chess Association sends best wishes to both of them and thanks them for their assistance in enabling Scotland's correspondence chess players to represent their own country in international team and individual events.

I am delighted to report that Volker-M. Anton (DDR) has achieved a Grandmaster norm in our Centenary International Tournament and I hope to be reporting that at least another two ICCF titles will have been achieved before completion of the event - current details are shown on page 12.

Our new Cup event announced in our last issue and also on Ceefax/Oracle has attracted more than 100 entries. Pairing details will be included in our next News Bulletin, as will results from the Scottish Centenary Cup Semifinals.

Enclosed with this issue (for UK members) is an entry form for SCCA events for the forthcoming 1987/8 season. We hope that entries to individual tournaments will exceed those for previous years and also that we will see the formation of a 6th Division in our most popular League.

Your Vice-President, George Livie, and I will both be attending the ICCF Congress in the Netherlands from 5th-12th September. We will be present for the drawing of groups for the next Olympiad Preliminaries (see page 33 for more information) and also for the next World Championship Semifinals, in which Alan Norris, our 1984/6 Scottish Champion, will be competing. A new ICCF Grading List, with results up to 31/12/86, is also expected to be published. Our report will appear in the next News Bulletin (a double issue to be published before Christmas).

SECRETARIAL NOTES by Alan Hind

Our latest AGM has just taken place and the Minutes are given elsewhere. There are a few changes and some things remaining as before. On the change side, we are sorry to lose Richard Beecham as International Secretary after a long period of service - but we are glad that he is now taking on another vital role on the Executive. Richard is to become our new Membership and Publicity Secretary. This is a position which has not been filled for some time and is a particularly necessary one if we wish to expand our organisation. Richard's replacement as International Secretary is Phil Giulian, and we wish him every success in the post.

We are also sorry to lose Tony McClelland who was our Grading Officer. Tony is going to be concentrating on his studies for his Ph.D. We wish him well in that. He will be replaced by Graham Wood, who will be looking at our grading system particularly from a computerisation point of view.

On the membership theme, I am looking for volunteers to help build up our organisation. It has long been felt that the best way to increase our membership is via local contact at chess clubs, socially, etc. What I am looking for is a contact in each part of the country to co-ordinate that effort and work with our new Publicity and Membership Officer. You can do your bit for the good of the SCCA - at no cost. I know a number of you already "recruit" and what we are trying to do here is get that onto a more formal basis.

Subscription Rates 1987-88	Life Member - £50, Annual Member - £6 (incl. Bulletin) News Bulletin only - £3 per annum (4 issues incl postages)
-------------------------------	--

SCOTTISH CORRESPONDENCE CHESS ASSOCIATION

Minutes of the Annual General Meeting held in Chess Suppliers (Scotland) Ltd., 15 Hope Street, Glasgow, on Sunday 17th May 1987 at 4pm.

Present: A.P. Borwell (President), C.R. Beecham, S. Hilton, A. Hind, A.T. Hislop, D.M. Livie, G.W.G. Livie, A.J. McClelland, G.D. Pyrich, A.J. Shaw, J. Watson and G. Wood.

Apologies: P. Giuliani

Minutes of last Annual General Meeting

The Minutes of the previous AGM held on 8th June 1986, which were published in Bulletin No. 20, were approved.

Secretary's Report

The Secretary's brief report made the following points:

- As a national association we are growing gradually and at this stage we have to give serious consideration as to recruiting new members. The two principal methods being considered to attract new members throughout the year are starting tournaments (non Championship) at various stages of the season (eg. Quartet sections, Openings), and introducing a network of recruitment contacts throughout the country to attract local club players into correspondence chess.
- Our national tournaments had increased in terms of entrants. The Scottish Championship 1984/86 was won by A.J. Norris, who gained the Scottish Master title. The Scottish Centenary Open was progressing well under the control of D.M. Livie. It was now in its semi-final stage and a second Open Tournament is due to start in September 1987.
- The "100 Club" provides useful finance to the SCCA but, as the number of unit holders is small, the same people appear to win with regularity. New scheme members are needed. The SCCA is indebted to G.W.G. Livie for the work carried out by him on this and other fund-raising activities.
- Internationally, there is plenty of activity. We still have teams playing in the Olympiad, European, 2nd North Atlantic and Ladies Olympiad events. From these team events, G. Morrison and A.J. Norris have obtained half IM norms. In individual events, D.M. Bryson had achieved the GM title with a marvellous first place in the Norwegian international tournament. He is also going to finish among the top places in the Scottish Centenary Invitation event and is now rated number 33 in the world in the official ICCF grading list. Mrs. R. Giuliani is representing Scotland in the Ladies European individual tournament.

Treasurer's Report

G.D. Pyrich presented draft accounts to the AGM showing our current income and expenditure. These were still subject to audit and will be reproduced in the Bulletin. The financial position was relatively healthy and we have sufficient funds to be able to meet future commitments for tournament prizes and expenses. Good news would be given on proposals for membership fees.

The meeting unanimously accepted the figures presented to it with the proviso that they were subject to audit.

(Completed accounts are shown on pages 4/5 and have been submitted to our Auditor - Editor)

Election of Office-Bearers

The following were elected to the Executive Committee:

President	A.P. Borwell
Vice President	G.W.G. Livie
Secretary	A. Hind
Treasurer	G.D. Pyrich
Assistant Secretary	D.M. Livie
International Secretary	P.M. Giuliani
Grading Officer	G. Wood
Publicity & Membership Officer	C.R. Beecham
Other Members	A.T. Hislop A.J. Shaw

It was noted with regret that, after a long period as International Secretary, C.R. Beecham had decided to step down. However, it was with pleasure that the meeting accepted his offer to act as Publicity & Membership Officer. Unfortunately, we were also losing our Grading Officer of the last two years, A.J. McClelland, whose studies would prevent him from taking an active part in the SCCA in the following year.

It was however a pleasure to welcome our new International Secretary, P.M. Giuliani, and Grading Officer, G. Wood, and we wish them well in their new tasks.

Election of Auditor

Subject to his agreement, it was agreed that the present Auditor, H. Bell, is re-elected for the ensuing year under the same terms and conditions.

Subscriptions

There would be no change in the fee structure for 1987/88. The only minor amendment would be a £2 discount offered to new full members to be offset against 1987/88 tournament fees. It was recognised that it was impractical to provide 4 single issues of the Bulletin and the current practice of 2 single issues and one double issue would continue.

Any Other Business

The question of notation would be addressed by the new Executive during the year.

"100 CLUB"

This is a club for members who really would like to help the Scottish Correspondence Chess Association develop further. Currently there are around 80 units issued but we need to increase this to 100 as soon as possible - please help us!

The subscription is only £1 per month per unit, with two prizes each month currently approx £22 and £15 respectively - members may apply for more than one unit if they so wish!

A monthly bankers order form can be obtained from our Treasurer, George Pyrich, 53 Duanikier Road, Kirkcaldy, Fife, KY11 2RL. If you return it to him before the 10th of the month, then you will be eligible for inclusion in the draw for that month.

Recent winners:

	March	April	May	June	July
1st Prize	K B McAlpine	I Mackintosh	J S Murray	G W G Livie	J Watson
2nd Prize	A P Borwell	A Grant	A J McClelland	A P Borwell	G W G Livie

SCOTTISH CORRESPONDENCE CHESS ASSOCIATION

FINANCIAL ACCOUNTS FOR THE YEAR ENDED 31st MARCH 1987

1986		GENERAL ACCOUNT		1987	
£	£	INCOME		£	£
268.00		MEMBERSHIP FEES		303.00	
<u>92.19</u>		Annual (101)		<u>91.00</u>	
360.19		Life Members Fund Contribution		394.68	
4.00		less Discount		7.50	
<u>- -</u>	356.19	less Refund		<u>10.00</u>	377.18
		COMPETITION FEES			
221.00		Individual		336.00	
<u>76.50</u>		League		<u>137.00</u>	
297.50		less Prizes		473.00	
<u>146.00</u>	151.50	BULLETIN		<u>196.50</u>	276.50
		Sales		568.67	
375.40		Expenses		<u>376.13</u>	192.54
<u>222.75</u>	152.65	GRANT			
	250.00	Scottish Chess Association			275.00
		ADJUDICATIONS			
49.00		Fees Received		42.50	
<u>44.00</u>	5.00	Fees Paid		<u>40.00</u>	2.50
		DONATIONS			93.00
		INTEREST			
		Received			
		less Paid			
		SALES			
		International Post Cards			250.00
		MISCELLANEOUS			
		Unpresented Cheques		<u>10.00</u>	<u>1476.72</u>
	<u>915.34</u>	EXPENDITURE			
		AFFILIATION FEES			
5.00		SCA		5.00	
<u>24.00</u>	29.00	BPCF		<u>18.50</u>	23.50
	9.20	ICCF			16.00
		CONTROLLERS' EXPENSES			91.95
	126.16	SECRETARIAL EXPENSES			133.25
	63.15	ADVERTISING AND STATIONERY			168.56
	7.79	BANK CHARGES			7.42
	<u>475.00</u>	TRANSFER TO INTERNATIONAL ACCOUNT			<u>-</u>
	<u>710.32</u>	SURPLUS FOR YEAR			<u>1036.04</u>

1986		LIFE MEMBERS ACCOUNT		1987	
£	£	INCOME		£	£
120.00		Membership Fees		-	
<u>65.40</u>		Interest Received		<u>87.13</u>	
185.40		less transferred to General Fund		87.13	
<u>92.19</u>				<u>91.68</u>	
<u>93.21</u>				<u>(4.55)</u>	

1986		INTERNATIONAL ACCOUNT		1987	
£	£	INCOME		£	£
308.00		Sale of Lottery Tickets		366.00	
<u>115.00</u>	193.00	less Prizes		<u>175.00</u>	191.00
	900.00	SCA Grant			-
	300.95	Donations			-
	199.66	Interest Received			134.97
959.00		100 Club		860.30	
<u>479.50</u>	479.50	less Prizes		<u>423.60</u>	366.70
		Centenary Cup Tournament			
40.00		Entry Fees received			-
<u>20.00</u>	20.00	less Accrued Prizes			-
	475.00	Transfer from General Account			-
	<u>-</u>	Unpresented Cheques			<u>81.72</u>
	2568.11	EXPENDITURE			<u>774.39</u>
	45.52	Printing - Lottery Tickets			45.52
	-	Lottery Licence			22.50
3451.19		ICCF Congress			250.00
<u>130.49</u>		International Centenary Tournament			-
<u>3627.20</u>		SURPLUS (DEFICIT)			<u>456.37</u>
(1059.09)		BALANCE SHEET AS AT 31st MARCH 1987			

1986		BALANCE SHEET AS AT 31st MARCH 1987		1987	
£	£	ASSETS		£	£
		Clydesdale Bank plc			
	(51.37)	Current Account			907.95
	65.16	General Deposit Account			65.16
	<u>3330.35</u>	International Deposit Account			<u>3858.49</u>
	3344.14	Cash on hand			4831.60
	<u>16.70</u>	less LIABILITIES			
	3360.84	General Account		246.00	
227.58		International Account		252.00	<u>498.00</u>
287.52	<u>515.10</u>	CLOSING BALANCES			<u>4333.60</u>
	<u>2845.74</u>	OPENING BALANCES			

REPRESENTING	CAPITAL ACCOUNT	OPENING BALANCES	SURPLUS/(DEFICIT)	CLOSING BALANCES
		£	£	£
General Fund		731.04	1036.04	1767.08
Life Members Fund		829.72	(4.55)	825.17
International Fund		1284.98	456.37	1741.35
		2845.74	1487.86	4333.60

Notes :

100 Club Prepayments	23.00
SCA Membership	5.00
Accrued Prizes	<u>470.00</u>
	<u>498.00</u>

CHAMPIONSHIP 85-87

CONTROLLER : U SAVAGE

N°		1	2	3	4	5	6	7	8	9	10	11	Pts
1	A. Mc GOWAN	●	½	½	0	0	0	0	1	0	1	1	4
2	G. R. SPROTT	½	●	0	½	½	0	0	0	1	1	1	4½
3	A. T. HISLOP	½	1	●	0	0	½	½	1	1	½		
4	B. MARTIN	1	½	1	●	½	1	½	1	1	1	1	8½
5	T. S. WICKENS	1	½	1	½	●	1	1	1	1	1	1	9
6	G. WOOD	1	1		0	0	●	1	0	1		0	
7	I. F. REEMAN	1	1	½	½	0	0	●	1	1		0	
8	T. G. JOHNSTON	0	1	½	0	0	1	0	●	1	1	½	5
9	I. THOMPSON	1	0	0	0	0	0	0	0	●		0	
10	M. YIANNI	0	0	0	0	0		0		0	●	0	
11	D. M. LIVIE	0	0	½	0	0	1	1	½	1	1	●	5

CANDIDATES 85-87

CONTROLLER : C. R. BEECHAM

N°		1	2	3	4	5	6	7	8	9	10	11	12	13	Pt.
1	A. LUMSDEN	●	0	0	0	0	0	0	0	0	0	0	0	0	w/b
2	J. BISLAND	1	●	1	0	½	½	1		½	0	½	½		
3	Prof. G. H. BIRD	1	0	●	0	1	1	1	1	1	0	0	1	0	7
4	R. KILPATRICK	1	1	1	●	1	1	1	1	1	½	½	1	½	10½
5	R. DICKSON	1		0	0	●		1	0	0	½	0	0		
6	I. MARSHALL	1	½	0	0		●	½	1	0	0	½	0		
7	T. Mc MORRAN	1	½	0	0	½	●	1		0	0	1	1		
8	J. SEYFRIED	1	0	0	0	0	0	●	0	0	0	0	0	0	1 w/b
9	W. McMILLAN	1		0	0	1	1		1	●	0	0	0	1	
10	J. STEVENSON	1	½	1	½	1	1	1	1	1	●	½	1	1	10½
11	M. Mac LEOD	1	1	1	½	½	½	1	1	1	½	●	½		
12	D. HARVEY	1	½	0	0	1		0	1	1	0		●	0	
13	D. McKERRACHER	1	½	1	½	1	1	0	1	0	0	½	1	●	7½

CHAMPIONSHIP 86-88

CONTROLLER : D. G. McROBERTS

N°		1	2	3	4	5	6	7	8	9	Pt.
1	C. R. BEECHAM	□			1		½			1	
2	Prof. G. H. BIRD		□								
3	M. A. HAMMETT			□					0		
4	B. MARTIN	0			□	1		1			
5	G. A. MORTON				0	□					
6	A. J. NORRIS	½					□				
7	G. D. PYRICH			1	0			□			
8	J. STEVENSON								□		
9	A. TANKEL	0								□	

Candidates 86-88

CONTROLLER : C. R. BEECHAM

N°		1	2	3	4	5	6	7	8	9	10	11	12	13	Pt.
1	M. Dyer	□	½							½					
2	A. Hislop	½	□	1	½	1				½	0				
3	R. Innes		0	□						0	½	0			
4	T. G. Johnston	½		□						1	½	½			
5	R. Kilpatrick				□	1	1			½					
6	D. McKerracher		0		0	□				1			0		
7	I. Reeman				0		□								
8	D. R. Reid							□		1					
9	M. Ross	½		1						□					
10	J. M. T. Ryan		½	½	0	½	0	0		□					
11	Z. E. Sadowski				½						□	0			
12	G. R. Sprott		1	1	½						1	□			
13	G. E. Wallwork						1						□		

PREMIER TOURNAMENTS CONTROLLER : T.S. WICKENS

Nº	A	1	2	3	4	5	6
1	L. AIRO		½		½	1 1	
2	R. DICKSON	½				1 1	
3	J. P. L. LUMSDEN					1 1	
4	J.W. McINTYRE	½				1 1	
5	Miss A. McMONIGLE	0 0	0 0	0 0	0 0	0 0	
6	J. MERRIFIELD					1 1	

Nº	B	1	2	3	4	5	6
1	C.J.W. BEVERIDGE		1 0				
2	M. HANLEY	0 1				1 1	
3	Mrs M.E. LEASK					1 1	
4	T. McMORRAN					1 1	
5	McD.W. SMITH		0 0	0 0	0 0		
6	A.R. WILSON						

Nº	C	1	2	3	4	5	6
1	J.P.L. LUMSDEN				½ ½		
2	P. McGDOWAN						
3	J.G. O'DORRHELL						
4	D.I. ROSS	½ ½					
5	R.E. ROUGH						
6	K. SEYFRIED						

Nº	D	1	2	3	4	5
1	D. HARVEY					
2	J.M. HERRIES				0 0	0 0
3	S. HILTON					
4	M.J. MOONAN		1 1			
5	A.D. PENMAN		1 1			

QUARTETS 86/87

POSTAL KNIGHT CONTROLLER : D.M. LIVIE

Nº	FINAL	1	2	3	4
1	M.J. BIRD				
2	B.R. HILL			0 0	0 0
3	G.W.G. LIVIE	1	1 1		1
4	T. McMORRAN		1 1	0	

Nº	Q 123	1	2	3	4
1	J.G. BLENCOWE				0
2	D.L. GILLESPIE				
3	S. HILTON				
4	C. MacGREGOR	1			

Nº	Q 125	1	2	3	4
1	P.J. JACKSON		½ ½		0 ½
2	T. McKINLAY	½ ½		0 0	
3	M.J. MacLEOD		1 1		
4	T. MASON	½ ½	1		

MAJOR TOURNAMENTS CONTROLLER : G.W.G. LIVIE

Nº	A	1	2	3	4	5	6
1	A. CROCKETT		0			0 0	1
2	A.F. HOGG	1		1 1		1	1 0
3	J. Mc MENEMY	0 0	0 0		0 0	0 0	
4	J.M. NOBLE			1 1			
5	E. THOMPSON	1 1	0	1 1			½
6	G. WALLIS	0	0 1	1 1		½	

Nº	B	1	2	3	4	5	6
1	S.R. CAPSEY		0 0	½		½	
2	S.D. DOHERTY	1 1		1 1	1 1	0 ½	0 1
3	B.W. GRANT	½ ½	0 0		½ ½	½ ½	0
4	T. McKINLAY		0 0	½ ½			0 0
5	L.W.S. MITCHELL	½ ½	1 ½	½ ½	1 1		
6	L. STEPHENSON		1 0	1	0		

Nº	C	1	2	3	4	5
1	J.H. FALCONER			1 0	1	1 1
2	J.M. GARVOCK			½ ½	½ ½	
3	P.J. JACKSON	0 1	½ ½		½ ½	0 1
4	I. SHEDDON	0		½ ½	½ ½	
5	A. WILSON	0 0		1 0		

Nº	D	1	2	3	4	5
1	B.W. CHALMERS					0
2	W. GREEN				0 0	0 0
3	F. HALL					0 0
4	W. Mc GLINCHEY		1 1			0 0
5	P.J. MOIR	1	1 1	1 1	1 1	

POSTAL SHIELD

Nº	FINAL	1	2	3	4
1	S. ADAMS				½ ½
2	T. CRAIG				1
3	K. GORDON				
4	J. WATSON	½ ½	0		

Nº	Q 124	1	2	3	4
1	A.G.E. BIRD			1 ½	1 1
2	W. CAMERON			1 0	1 1
3	J.M. GARVOCK	0 ½	0 1		1 1
4	J. Mc MENEMY	0 0	0 0	0 0	

Nº	Q 126	1	2	3	4
1	P. FERRY				
2	M. HANLEY			0	
3	M. MITCHELL		1		
4	D. Mc ADAM				

QUARTETS continued... 86/87

Nº	Q127	1	2	3	4
1	C.A. JACKSON				
2	E. WOOD				
3	J.J. BRADY				
4	A. McLELLAN				

Nº	Q128	1	2	3	4
1	J. Mc CARTAN				
2	R. STOKES				
3	T. CRONE				
4	G.D. PYRICH				

OPENINGS TOURNAMENTS (by Alan Hind)

You will note the amendment above to the plural, as we not only have our start of season sections but we have just begun a section of 4 players for the Sokolsky (1 b4) and three players with Alekhine's Defence (1 e4 Nf6). Details of these sections and the two started earlier with the Dutch - Staunton Variation (1 d4 f5, 2 e4) are shown below.

I am still looking to start new openings tournament sections at any point in time - please let me know if you are interested. Another player to complete the Alekhine's Defence section, would be particularly welcome!

Section OT1 (Dutch-Staunton)

No	1	2	3	Pts	Pos
1	J G Blencowe	■			
2	H L Küün		■	1 1	
3	M J MacLeod		0 0	■	

Section OT2 (Dutch-Staunton)

No	1	2	3	Pts	Pos
1	J Kelly	■	0		
2	Mrs M E Leask	1	■		
3	G Wood			■	

Section OT3 (Sokolsky)

No	1	2	3	4	Pts	Pos
1	S Hilton	■				
2	S King-Spooner		■			
3	W McGlinchey			■		
4	J Watson				■	

Section OT4 (Alekhine's Defence)

No	1	2	3	Pts	Pos
1	S Hilton	■			
2	M MacLeod		■		
3	J Pearston			■	

HANDICAP TOURNAMENT (by Allan Hislop)

The tournament is growing still larger, with a further 7 players joining during the past few months, bringing the total to nearly 40.

There was a move by me to change the format to a series of leagues, but happily that has been abandoned. The reason I toyed with a change was due to the name "Handicap" which I felt would put new members off, as they might think it was a game not played with equal forces. However, events have proved me wrong and the "Handicap" is as popular as ever, it being played on equal terms and with entry any time.

As you will have read elsewhere in the magazine (I hope!), new full members will in effect get free entry to an event, including the Handicap, so I am hoping for a record number of entries this season, and I hope you will tell your chess friends this when you recruit new members.

SCOTTISH C.C.A. LEAGUE 1986/87

(Controller : Ken Gordon)

Once again, the Scottish Correspondence Chess League has a record entry of teams and we are delighted that a fifth division has been formed, although only four teams are participating. Holders The Establishment again look favourites for the title but previous champions, Chess Suppliers and Perth Correspondents, along with Cathcart, Falkirk and newly-promoted Brutal Realism, should provide some interesting games.

In Division 2, the Streatham & Brixton line-up is impressive, whilst Glasgow and Crowwood should go close in Division 3 with Black Knight (as dark horses!)

DIVISION 1

A THE ESTABLISHMENT		B PERTH CORRESPONDENTS		C CATHCART "A"	
1 T J Craig	v E1	1 A P Borwell	v D1	1 A Grant	v F1
2 T S Wickens	v D2	2 I Mackintosh	v C2	2 A McGowan	v B2
3 C R Beechan	v C3	3 A Kennedy	v F3	3 A T Hislop	v A3
4 K Fryer	v B4	4 J Falconer	v A4	4 D McRoberts	v E4
5 A Hind	v F5	5 I V S Mitchell	v E5	5 J G O'Donnell	v D5

D FALKIRK RSVP		E CHESS SUPPLIERS "A"		F BRUTAL REALISM	
1 J McLay	v B1	1 A J Shaw	v A1	1 M Ross	v C1
2 G Hamilton	v A2	2 G W G Livie	v F2	2 B Keenan	v E2
3 M Webster	0 0 v E3	3 D Livie	1 1 v D3	3 P Coffield	v B3
4 A Thomson	v F4	4 L R McKenzie	v C4	4 S Murray	v D4
5 J Desmond	v C5	5 M Dyer	v B5	5 A Thomson	v A5

DIVISION 2

A DREGHORN		B CHESS SUPPLIERS "B"		C KIRKCALDY	
1 G McPeake	0 v E1	1 I Thompson	v D1	1 G Fyrich	1 1/2 v F1
2 C MacNab	v D2	2 J McIntyre	0 0 v C2	2 D H Dempster	1 1 v B2
3 S Clark	v C3	3 J Carlin	v F3	3 I Marshall	v A3
4 F Park	v B4	4 D Neil	v A4	4 J J Webster	0 0 v E4
5 I Sneddon	1 1 v F5	5 M Hanley	v E5	5 M C Grayson	1 v D5

D FORTH KNIGHTS		E STREATHAM & BRIXTON		F CUMBERNAULD ROOKIES	
1 S Gilmour	v B1	1 C A McNab	1 v A1	1 I Marks	1/2 0 v C1
2 J P Watson	v A2	2 A J Norris	v F2	2 I MacKey	v E2
3 S Rettie	v E3	3 S R Gillam	v D3	3 H Peffers	v B3
4 R Rough	v F4	4 R A Inglis	1 1 v C4	4 F Davis	v D4
5 B Currie	0 v C5	5 M Inglis	v B5	5 C Pollock	0 0 v A5

DIVISION 3

A GLASGOW		B BLACK KNIGHT		C PAISLEY (YMCA)	
1 S R Mannion	v E1	1 B Martin	1/2 1/2 v D1	1 K Beaton	v F1
2 K W C Stewart	v D2	2 G Wood	1/2 v C2	2 M McBeth	v B2
3 C H Brisebois	v C3	3 I Reeman	v F3	3 R Cochrane	v A3
4 T Russell	v B4	4 T Johnston	v A4	4 G Reid	v E4
5 J Vard	v F5	5 G Sprott	1 1 v E5	5 A Cowan	v D5

D CROWWOOD		E STRATHCLYDE UNIVERSITY		F PAVN PUSHERS	
1 J B Henderson	1/2 1/2 v B1	1 M MacLeod	v A1	1 K McDonald	v C1
2 J Stevenson	v A2	2 J Shaw	0 v F2	2 S Hilton	1 v E2
3 J Doyle	v E3	3 M Moohan	v D3	3 S Doherty	v B3
4 A Maxwell	v F4	4 D Gourlay	v C4	4 J Garvock	v D4
5 D L Gillespie	v C5	5 J McRoberts	0 0 v B5	5 T Mason	v A5

DIVISION 4

A REAL TELECOM		B DALMUIR "A"		C HANGOVER FR KNIGHTS AT THE PUB	
1 R Dickson	v E1	1 I Aird	v D1	1 R Lothian	v F1
2 S Brady	v D2	2 M McGinley	v C2	2 T Blake	v B2
3 J Burns	0 0 v C3	3 R McDermott	v F3	3 J Ross	1 1 v A3
4 E Cocozza	v B4	4 D McAdam	v A4	4 G Argo	v E4
5 S Phillips	v F5	5 J McCartan	v E5	5 S Nelson	v D5

D IRVINE		E WANDERING DRAGONS		F CHESS SUPPLIERS "C"	
1 J Anderson	v B1	1 S Gowland	v A1	1 M E McGhee	v C1
2 D Gillespie	v A2	2 C Donkin	v F2	2 P McGowan	v E2
3 T Barrett	v E3	3 N Clapperton	v D3	3 G Wallis	v B3
4 G King	v F4	4 M Kelly	v C4	4 W B Duff	v D4
5 J Shankland	v C5	5 D E V Foots	v B5	5 A Duff	v A5

DIVISION 5

A ALLOA		B CASTLEHILL		C DALMUIR "B"	
1 F Borkowski	v B1	1 D Reid	v A1	1 W McGlinchey	v D1
2 J Gilchrist	v D2	2 R J P Kynoch	v C2	2 M Devine	v B2
3 A Scott	v C3	3 D A Gibb	v D3	3 M Alexander	v A3
4 A Cook	v F4	4 K J Rose	v D4	4 A Tyrrell	v A4
5 P Strain	v E5	5 C A MacGregor	v C5	5 E Kenny	v B5

D THE HEDGARE

1 M Mitchell	v C1
2 P Ferry	v A2
3 G Grant	v B3
4 H L Kuun	v E4
5 K I Fisher	v A5

Invitation to New Teams

The Scottish CCA League would be delighted to welcome new teams of five players for next season. This is an excellent way to try correspondence chess with only 2 games per player. Details available from Alan Hind, 6 Struan Road, Cathcart, Glasgow G44 3AT

Since our last issue, there have been several important results and we are delighted that Volker Anton (DDR) has reached the GM title norm of 9½ pts, with one game remaining (against Simon Webb of England). He now shares the lead with our own Douglas Bryson, who also has 9½ pts with an unfinished game against Prof Dr Sagorowski. Eero Hintikka (Fin) has 9 pts (with 2 to finish, needing ½ pt for his GM title), Simon Webb (Eng) has 7½ (3) and Nigel Povah (Eng) 7½ (2). Borislav Vukcevic (Yug) 6½ pts (4), Dr. J. Foldi 6 pts (4) and Prof Dr Sagorowski 4½ pts (6) are also possible major prizewinners. Karl Strand (Nor) has an excellent chance to obtain his IM title, needing only ½ pt from his remaining game to reach the IM norm of 7 pts.

Nº		SCOTTISH CENTENARY	NATION	1	2	3	4	5	6	7	8	9	10	11	12	13	14	15	POINTS
1	IM	POVAH N.E.	GBE	□	W	1/2	W	0	1	W	1/2	W	1/2	W	0	W	1/2	W	1
2	GM	NAPOLITANO M.	ITA	0	□	0	0	0	0	0	0	0	0	0	0	0	0	0	0
3	GM	BERTA M.	YUG	W	1/2	1	□	W	1/2	W	1/2	W	0	W	0	W	1/2	W	0
4	NM	STRAND K.	NOR	1	W	1/2	□	W	1/2	W	1/2	1	0	1/2	W	1/2	0	W	0
5	IM	STERUD E.	NOR	W	0	1	W	1/2	□	W	1/2	0	W	1/2	0	W	1/2	W	0
6	IM	ANTON V.M.	DDR	1/2	W	1	1/2	W	1/2	1	□	W	1/2	W	1	1	W	1/2	W
7	GM	VUKCEVIC B.	YUG	W	1	W	1/2	1	W	1	□	W	1	W	1/2	1	W	1	0
8	GM	DIACONESCU P.	ROU	0	W	1	0	1/2	W	1/2	0	□	0	0	0	0	0	0	0
9	IM	HINTIKKA E.	FIN	W	1/2	1	W	1	W	1/2	W	1	□	W	1	W	1	0	W
10	GM	SAGOROWSKI Prof. Dr. W.	SU	1/2	W	1	W	1/2	1	0	W	1	□	W	1/2	W	1/2	W	W
11	IM	SORENSEN R.	DK	W	1	1	W	1/2	1	0	W	1/2	□	1	0	0	1/2	0	
12	IM	BOHAK J.	YUG	0	W	1	0	W	1/2	0	0	0	W	1	0	W	0	0	
13	GM	WEBB S.	GBE	W	1/2	1	W	1/2	1	W	1	1/2	W	1	□	W	1/2	0	
14	IM	FOLDI Dr. J.	HUN	W	1	1/2	W	1/2	W	1/2	0	W	1	W	1/2	W	1/2	W	
15	NM	BRYSON D.M.	GBS	W	0	1	W	1	1	0	W	1	1/2	W	1	1/2	□	□	

ICCF THEMATIC TOURNAMENTS

The latest tournaments available to Scottish Correspondence Chess Association members through BPCF are shown hereunder. Each tournament will be arranged in sections of 5-7 players; two games against each opponent. The top two players from each section qualify for the final. The entry fee is £3.50 per group (payable to BPCF) and sent to A.M. Anderson, 3 Winterfield Gdns, Duns, Berwickshire, TD11 3EZ.

TT No.7/87 CARO KANN (PANOV VARIATION)

1 e4 c6, 2 d4 d5, 3 exd5 cxd5, 4 c4 Nf6

Entries close 1/9/87. Start 1/11/87

TT No.8/87 SCANDINAVIAN

1 e4 d5, 2 exd5 Qxd5, 3 Nc3

Entries close 1/10/87. Start 1/12/87



TT No.1/88 BENKO GAMBIT

1 d4 Nf6, 2 c4 c5, 3 d5 b5

Entries close 1/12/87. Start 1/2/88.

TT No.2/88 NIMZO INDIAN

1 d4 Nf6, 2 c4 e6, 3 Nc3 Bb4

Entries close 7/1/88. Start 1/3/88.

ICCF Entries

The following Scottish CCA players entered ICCF events in the period Jan-March 1987:

- M. Mitchell - World 1st Class
- J. Eadie - Thematic 3/87
- Thematic 1/88
- P.M. Giulian - World Master Class
- M.J. MacLeod - Thematic 4/87

! WINNING CONTINUATIONS !

White plays up the board

Black to move

selected by JOHN HAWKES

A



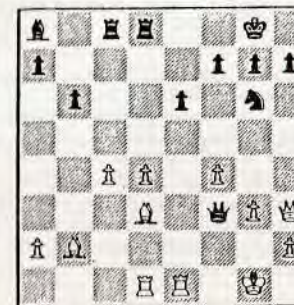
B



C



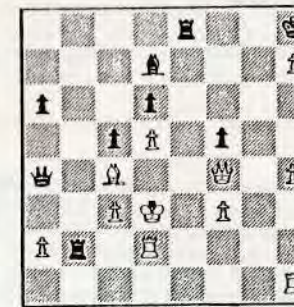
D



E



F



Solutions on page 40

NEW BOOKS**CORRESPONDENCE CHESS**

The Games of the World Correspondence Chess Championships I-X - T.D. Harding

Published by Batsford - Figurine notation, hardback, £19.95

This is a superbly produced record of the first ten World Correspondence Chess Championships, which began in 1950. Some 1000 games played by the strongest correspondence Grandmasters with complete players and ECO/Informator openings indices. Crosstables of each Championship with excellent diagrams, notes and games cross-references. An invaluable book for keen correspondence chess and OTB players, containing many interesting and creative opening ideas.

XVIII Deutsche Fernschachmeisterschaft 1981-84 - H-J Heitmann

Published by BdF in German - H. Meyer, 3110 Uelzen 1, Rademacherstr. 9/11, BRD

This booklet was completed shortly before the sad death of Hans-Joachim Heitmann, who was a stalwart of BdF and ICCF for several decades. His work for both organisations will be sadly missed but he will be remembered for his considerable administrative talents, his creativity and his impish humour.

This is a 120-page record of the 18th German Correspondence Chess Championship with extensive notes of the more interesting games and well-produced diagrams. Many useful ideas for opening innovations can be obtained by playing through the 132 games, which include some from previous BdF Championships.

CHESS OPENINGS

Chess Openings - Mike Rosman

Published by The Crowood Press - Figurine notation, paperback, £6.95

An interesting addition to the massive range of books on chess openings but presented in a novel format, concentrating on the principles which underlie good opening play rather than on tables of opening variations. This is a very useful book for correspondence chess players who wish to develop their opening repertoire and seek new ideas which will take them away from the well-known and heavily catalogued opening lines.

NEW BOOKS continued**CHESS ENDINGS**

The following four books have been published recently on chess endings, the first two of which deal with basic endings principles, which all correspondence players should possess, the third book specialises in pawn endings whilst the final one considers the transition from late middle-game to endings.

Winning Endgames - Tony Kosten

Published by Crowood Press - Figurine notation, paperback, £4.95

Written for the developing player, this book begins with basic mating procedures and then covers a series of endgame principles, explaining correct strategy and how to exploit positional and material advantages. Well written and presented - easy to read.

Chess Endings - Yuri Averbakh translated by Peter Clarke

Published by Pergamon Press - English notation, paperback, £8.50

This is a second edition of a famous endgame book, first published in 1960. It selects basic positions and, with extensive use of diagrams, leads you through some interesting and instructive positions. There are sections on most of the frequently occurring endings, with excellent explanations of the principles and winning procedures.

Comprehensive Chess Endings - Y. Averbakh & I. Maizelis translated by K.P. Heat (Volume 4 - Pawn Endings)

Published by Pergamon Press - Algebraic notation, paperback, £13.50

This is the fourth of five volumes planned and is a comprehensive treatise dedicated to Pawn Endings. Superbly presented with an exceptionally large number of diagrams. The complexities which can arise from the most simple looking pawn endings are fascinating. This series of books can be used as either reference works or as teaching/learning aids.

From the Middlegame into the Endgame - Edmar Mednis

Published by Pergamon Press - Algebraic notation, paperback, £10.50

The objectives of this book are to help you to decide when to enter the endgame and how to win a superior endgame or draw an inferior one. This is an interesting book using middle game positions, evaluating them and then analysing transition into and then through the endgame.

HISTORY OF TITLES

The word "Grossmeister" appears for the first time in the preface to the 1907 Ostend Tournament Book, written by Tarrasch. The word was used for the six strongest players who competed in a separate section, playing each other four times.

Until 1950, the chess world used the words International Master and Grandmaster for the best players in the World who were regularly invited to international events. In accordance with this tradition, Dr. Euwe was always addressed by his pupils as Grand-maitre.

In 1950, the World Chess Federation FIDE started to bestow the titles International Master and Grandmaster. Both titles bear some analogy to the academic degree Doctor; they are awarded for demonstrated skill and are valid for life.

In 1959, the first ICCF titles were bestowed and the Grandmasters were Olaf Bards (N), Lucius Endzelins (AU), H. Malmgren (S), Mario Wapolitano (I), Cecil J.S. Purdy (AU) and Lothar Schmid (BRD). The title of International Master was awarded to Frantisek Batik (CS), Valt Borsony (CS), Sten Isaksson (S), Jaroslav Jezek (CS), Sv. Kjellander (S), G.R. Mitchell (GB) and L. Vatzl (A).

Eight years later during the 1967 ICCF Congress at Krems, the rules for the awarding of titles were adopted. Therefore, it became possible to compare the achievements of titled players in a certain tournament with those of other players. It was necessary then to replace the hitherto subjective standards by more objective norms. The biggest problem to be solved is that the score of a player in a tournament is an insufficient indication of his achievement as this can only be assessed if there is a norm with which the strength of the tournament can be measured.

It is clear therefore that one has to look at the individual playing strength of all single participants of the tournament. The 1967 ICCF Rules made use of the number of title holders who participated in the tournament. In order to express the differences in playing strength between the players according to these rules, they were divided into three groups: the Grandmasters, the International Masters and the others. Within such groupings, all players were supposed to be of the same strength.

The strength of a tournament and the title norms belonging to it were related to the number of participants in each of the three groups.

In this manner, a player had to score 50% against the Grandmasters, 70% against the International Masters, and 80% against the others, to achieve a Grandmaster title.

In 1980, these percentages were raised respectively to 55%, 75% and 85%. This was done to make the achievement of a title more difficult.

Meanwhile, it became apparent that the present system had some shortcomings. Furthermore it was desirable to discriminate the playing strength in a better way, with more gradation than only three groups.

To solve this problem, Professor Elo developed the so-called ELO rating system some twenty years ago. This system uses mathematical (or better: statistical) methods to express differences in playing strength by using numbers (the so-called ratings).

The actual procedure is slightly more complicated than outlined below but it has been simplified with the intention of explaining more clearly the thoughts behind the rating calculations.

Column 1 gives the ratings of the players at the start of the tournament. Using these ratings one can calculate the average rating of 2536. This number indicates the strength of the tournament. It also makes it possible to compare this strength with those of other tournaments. (The final of the 11th World Championship, for instance, had a rating of 2520, the final of the 12th, 2531. The strong Swedish Axelsson Memorial, with only 15 Grandmasters participating, has the rating 2533).

In column 2 you find the difference of each player's rating with the average rating. A minus sign indicates that the rating of this player is below the average.

The differences (D) from column 2 are looked up in the table below. This table gives everybody's "expected score" (P).

D	P		D	P		D	P		D	P	
	H	L		H	L		H	L		H	L
0-3	.50	.50	92-98	.63	.37	198-206	.76	.24	345-357	.89	.11
4-10	.51	.49	99-106	.64	.36	207-215	.77	.23	358-374	.90	.10
11-17	.52	.48	107-113	.65	.35	216-225	.78	.22	375-391	.91	.09
18-25	.53	.47	114-121	.66	.34	226-235	.79	.21	392-411	.92	.08
26-32	.54	.46	122-129	.67	.33	236-245	.80	.20	412-432	.93	.07
33-39	.55	.45	130-137	.68	.32	246-256	.81	.19	433-456	.94	.06
40-46	.56	.44	138-145	.69	.31	257-267	.82	.18	457-484	.95	.05
47-53	.57	.43	146-153	.70	.30	268-278	.83	.17	485-517	.96	.04
54-61	.58	.42	154-162	.71	.29	279-290	.84	.16	518-559	.97	.03
62-68	.59	.41	163-170	.72	.28	291-302	.85	.15	560-619	.98	.02
69-76	.60	.40	171-179	.73	.27	303-315	.86	.14	620-735	.99	.01
77-83	.61	.39	180-188	.74	.26	316-328	.87	.13	over 735	1.00	.00
84-91	.62	.38	189-197	.75	.25	329-341	.88	.12			

Using the 10th World Championship table, you will find that K.B. Richardson in column 2 had a rating difference of +79 with the average opponent in this tournament. As he is supposed to be stronger than his average opponent, he is expected to score over 50%. The above table points out that a rating difference (D) of +79% belongs to a positive score (in column H under P) of 0.61 - or 61%. Richardson was also expected to score 61% against his 15 opponents. Column 3 gives the expected percentage score for each player. Column 4 shows how each score (rounded upwards) compares with the percentage score.

In column 5 you will find the real scores in the tournament. Comparing the columns 4 and 5 shows that Palciauskas not only was expected to win the tournament, but that he did as well, and even with one point more than expected. To him that was rather appropriate as Morgado and Sanakoew particularly played much better than could be expected from their start ratings. Columns 4 and 5 also show that Seeliger, Estrin, Sorensen and Kalish came out on disappointing scores.

When the tournament has been finished, the difference between the expected score (column 4) and the real score (column 5) is used to calculate a new rating for each player. This difference is multiplied by 10 and with that result the old rating is increased or decreased, according to whether the player has scored above or under his expectation.

Column 6 shows the calculated new ratings.

RATINGS AS MEASUREMENT FOR PLAYING STRENGTH

Since 1976, the Rating System Working Group of ICCF has worked on the building of its own rating systems, making the work of Elo usable for international correspondence chess. In the meantime, a description of this own system has been published in "1986: The ICCF Rating System Administrative Rules".

At the same time, a rating list was issued with more than 1900 active players on it, who all played more than 23 rated games. At this moment there are more than 8000 players incorporated in the system with almost 120,000 games ended before 1st January 1986.

The 20 best players of this list are:

1 Erik Bang	DK	2650	Hans Bouwmeester	NL	2605
2 Abram Chasin	SU	2645	Arne Sorensen	DK	2605
3 V.F. Moltschanow	SU	2640	13 Adrian Hollis	GB	2600
Jorn Sloth	DK	2640	14 Gennady Nesis	SU	2595
5 A.E. Deuel	SU	2625	Janez Podkrajsek	YU	2595
6 Richard Goldenberg	F	2620	16 Jerzy Krzysztan	PL	2590
7 M. Gudjev	BG	2615	Michel Lecroq	F	2590
8 Volker Anton	DDR	2610	Gerben van Manen	NL	2590
J.M. Kotkow	SU	2610	N.B. Rabinowicz	SU	2590
10 Eric Arnlind	S	2605	Horst Rittner	DDR	2590
			J. Ritums	SU	2590

From Scotland, the following players are on the list (at least 24 processed games, at least a rating of 2000):

D.M. Bryson, GM	2575	A.P. Borwell	2315
T.S. Wickens	2460	G.D. Pyrich	2250
C.R. Beecham	2360	G. Morrison	2215
P.M. Giulian	2350	D.A. Kilgour	2190
A.J. Norris	2350	A. Grant	2010

THE OPERATING OF THE RATING SYSTEM

The most important feature of ratings is that they are corrected when a player completes games. These changes are essentially illustrated in the chart below. As an example, the Final of the 10th World Championship has been used. This tournament took place from 1979 until 1984.

	1	2	3	4	5	6	
1 V. Palciauskas	US	2665	129	67%	10.5	11.5	2675
2 J.S. Morgado	AR	2495	-41	44%	7	10.5	2530
3 K.B. Richardson	GB	2615	79	61%	9.5	10	2620
4 G.K. Sanakoew	SU	2535	-1	50%	7.5	10	2560
5 R. Kauranen	SF	2560	24	53%	8	8.5	2565
6 K.H. Maeder	BRD	2555	19	53%	8	8.5	2560
7 J.A. Mubana	AR	2490	-46	44%	7	8	2500
8 M.J. Gowbinder	SU	2610	74	60%	9	8	2600
9 J. Boey	B	2580	44	56%	8.5	8	2575
10 M.M. Kletsel	SU	2545	9	51%	8	7.5	2540
11 V. Seeliger	BRD	2565	29	54%	8.5	6.5	2545
12 J.B. Estrin	SU	2560	24	43%	8	5.5	2535
13 J. Svenningsson	S	2405	-131	32%	5	5	2405
14 H. Sorensen	DK	2470	-66	41%	6.5	4.5	2450
15 K. Engel	BRD	2430	-106	36%	5.5	4.5	2420
16 J.P. Kalish	US	2500	-36	45%	7	3.5	2465

As indicated above, the real calculations are somewhat more complicated and we mention the following differences:

- It is possible at the beginning of a tournament that some players still don't have a rating as they haven't already finished enough games. The rating system contains a procedure to give those players temporary provisional ratings.
- In reality the expected score of column 4 is calculated as the sum of the expected scores in the single games. No roundings off are carried through.
- Sometimes another number is taken instead of 10 to multiply the score difference in order to calculate a new rating. This depends on the number of games someone has already played and also of the value of his old rating.
- If a player has scored very much above (see Morgado and Sanakoew) or under (see Estrin and Kalish) his expectation, extra rating points are added or subtracted. The reason for this is that an exceptional result could indicate that the start rating of the player was no longer adequate. Therefore, it is important to ensure that the player quickly achieves a more accurate rating.
- Tournaments like the above mentioned World Championship continue for many years. Some games are finished very rapidly, others take four or five years. Some players participate in the meantime in other tournaments, some players don't. In order to rate the results of those differences in a proper way, all players each year receive a new rating. It is arranged that games completed in a year are included in the rating system for that particular year, rather than held in abeyance until the entire tournament has been completed.

COMPARING WITH RATINGS

A nice aspect of ratings is that one can compare the past and the present. Below you will find three of these comparisons. The first one gives the five players with the highest rating for the years 1955 until 1986. It is surprising to see that only 27 players have been in the "top five" during these 30 years.

	1	2	3	4	5
1955	Schaid 2630	Arnlind 2470	Lundquist 2460	Koch 2435	Balogh 2430
1958	Schaid 2605	Endzelins 2480	Arnlind 2470	Lundquist/Napolitano 2460	
1960	Schaid 2620	O'Kelly 2525	Nielsen 2495	Arnlind 2480	Lundquist 2475
1962	Schaid 2620	Husak 2525	Nielsen 2510	Lundquist 2500	Endzelins 2495
1964	Schaid 2620	Husak/Sagorowsky	2525	Nielsen 2515	Rittner 2500
1965	Schaid 2620	Arnlind 2545	Husak 2525	Nielsen/Sagorowsky	2515
1966	Schaid 2620	Ericson 2555	Sagorowsky 2550	Arnlind/Husak	2545
1967	Ericson 2555	Sagorowsky 2550	Arnlind/Husak 2545		Nielsen 2540
1968	Ericson 2555	Sagorowsky 2550	Arnlind/Husak 2545		Nielsen 2540
1969	Berliner 2735	Gulbrandsen 2595	Husak 2565	Sagorowsky 2550	Arnlind 2545
1970	Berliner 2735	Gulbrandsen 2595	Husak 2565	Arnlind/Sagorowsky	2550
1971	Berliner 2765	Husak/Sagorowsky	2625	Endzelins 2615	Nielsen 2610
1972	Berliner 2765	Sagorowsky 2650	Husak 2625	Endzelins 2615	Nielsen 2610
1973	Berliner 2765	Sagorowsky 2650	Husak 2625	Endzelins 2615	Nielsen 2610
1974	Berliner 2765	Husak 2625	Endzelins/Sacharov	2615	Nielsen 2610
1975	Endzelins/Sacharov	2615	Nielsen 2610	Arnlind/Rittner/Sagorowsky	2605
1976	Hollis 2625	Arnlind/Sagorowsky	2620	Sacharov 2615	Rittner 2610
1977	Hollis 2625	Arnlind/Sagorowsky	2620	Sacharov/Waisman	2615
1978	Palciauskas 2665	Chasin 2655	Arnlind/Hollis	2625	Richardson 2615
1979	Palciauskas 2665	Chasin 2655	Hollis 2635	Arnlind 2625	Richardson 2615
1980	Palciauskas 2665	Chasin 2655	Hollis 2635	Arnlind 2625	Richardson 2615
1981	Sloth 2700	Palciauskas 2665	Chasin 2645	Hollis/Sagorowsky	2635
1982	Sloth 2700	Palciauskas 2665	Chasin 2645	Hollis/Sagorowsky	2635
1983	Sloth 2700	Chasin 2670	Arnlind/Bang/Dubin		2625
1984	Sloth 2700	Chasin 2670	Arnlind/Bang 2625	Gowbinder/Richardson	2610
1985	Sloth 2700	Chasin 2685	Moltschanow 2635	Arnlind/Bang	2625
1986	Bang 2650	Chasin 2645	Moltschanow/Sloth	2640	Deuel 2625

The second schedule holds the 50 best players with their highest rating in any year (during the period 1955-1986).

Berliner	US	2765	Kotkow	SU	2610
Sloth	DK	2700	Nielsen	DK	2610
Chasin	SU	2685	Rittner	DDR	2610
Palciauskas	US	2665	Bouwmeester	NL	2605
Bang	DK	2650	Krzyszton	PL	2605
Sagorowsky	SU	2650	Sorensen	DK	2605
Moltschanow	SU	2640	Hybl	CS	2600
Hollis	GB	2635	Krjukow	SU	2600
Schmid	BRD	2630	Brilla Banfalvi	H	2595
Aralind	S	2625	Guibrandsen	N	2595
Devel	SU	2625	Haag	H	2595
Dubinina	SU	2625	Jovcic	YU	2595
Husak	CS	2625	Nesis	SU	2595
Richardson	GB	2625	Podkrajsek	YU	2595
Goldenberg	F	2620	Rupp	A	2595
Kosenkow	SU	2620	Yim	SU	2595
Webb	GB	2620	Anton	R	2590
Costea	R	2615	Boey	B	2590
Endzelins	AU	2615	Kauranen	SF	2590
Gudjew	SU	2615	Klovans	SU	2590
Sacharov	SU	2615	Lecroq	F	2590
Weisman	SU	2615	Van Manen	NL	2590
Abramson	SU	2610	Rabinowicz	SU	2590
Anton	DDR	2610	Voltschok	SU	2590
Gowbinder	SU	2610			

The third table gives the best 50 players arranged according to their average rating over a period of ten consecutive years. Actually this overview summarises the history of the last 30 years in the best way. By taking periods of ten years, one ensures that extremes are eliminated.

Aralind	S	2623	Kellner	AU	2549
Sagorowsky	SU	2622	Madler	BRD	2548
Hollis	GB	2621	Sitschew	SU	2548
Schmid	BRD	2619	Jovcic	YU	2546
Richardson	GB	2615	Madler	DDR	2545
Costea	R	2600	Estrin	SU	2539
Krzyszton	PL	2598	Pakdaman	IR	2536
Rittner	DDR	2588	Judowitsch	SU	2533
Ekstrom	S	2585	Maeder	BRD	2532
Voltschok	SU	2583	Baumbach	DDR	2531
Brilla Banfalvi	H	2580	Bohartirchuk	CA	2530
Dubinina	SU	2580	Ekebjerg	DK	2526
Husak	CS	2579	De Carbonnel	BRD	2525
Kauranen	SF	2575	Cross	US	2524
Nielsen	DK	2574	Mulder van Leens Dijkstra	NL	2524
Thiele	DDR	2574	Stern	DDR	2524
Anton	R	2572	Steiner	CH	2523
Yim	SU	2569	Ericson	S	2515
Abramson	SU	2567	Hybl	CS	2514
Endzelins	AU	2560	Nyman	S	2514
Boey	B	2558	Cording	BRD	2510
Kletsel	SU	2553	Karker	BRD	2509
Stern	BRD	2553	Verbel	SU	2508
Dunhaupt	BRD	2552	Tarnai	H	2506
Sanakoew	SU	2550	Koch	DDR	2505

Each of these three historical surveys give their own picture of the achievements of the top players in ICCF during the last 30 years. The last survey is the most interesting one. As it deals with periods of at least 10 years, it contains only the players who have dedicated their lives to correspondence chess.

Not all players like this kind of comparison, or their own rating! During the years of working with the ICCF rating system, it has very often appeared that lots of players have their own subjective view of their own playing strength and of those of others. One is often inclined to view one's own playing strength on the best result one has achieved which may have been years ago. The majority of less good results are then forgotten!

In this respect it is worth commenting that a rating system only counts full and half points, and zeros which a player achieves. It does not take account of illness, lack of time, personal problems, blunders, writing errors, sacrifices for the team or brilliant insights!

For correspondence chess players who play in many tournaments at the same time, ratings may not be so pleasant as results of games which were played with less concentration must be included. To Palciauskas (see the example formerly worked out), this meant that his rating in the list of 1st January 1984 was only 2430, because in the same period in which he gained the World Championship, he also participated in the final of the second ICCF Cup with the result of 3.5 in 16 games against an average rating opposition of 2333. The Rating System Working Group hopes that adoption of a rating system in ICCF will reflect the phenomenon of players not playing to their utmost in some tournaments.

THE PRESENT ICCF SYSTEM

Together with the Qualification Committee of ICCF, the Rating System Working Group has worked out a proposal for new title regulations. The objections against the present regulations will largely be removed by using ratings. The three most important objections are explained below:-

1. Where a player has gained, long ago, the (Grand)master title, his actual playing strength is supposed only to be related to that one result from the past. In practice, this works out to be an incorrect starting point. For instance, it is clear that the playing strength of an older Grandmaster diminishes (see Napolitano - rating 2460 in 1958, rating 2465 in 1971, rating 2295 in 1983). It also often happens that after having gained his title, a player exerts less so that his rating decreases (a Grandmaster who gained his title in the seventies with a rating of 2485 nowadays has 2365). The chart below gives the invitational tournaments going on in 1986, together with the title norms according to the present ICCF system and with the title norms which would be valid using the proposed rating regulations (ELO).

	Part	Rating	ICCF		ELO	
			GMR	IMR	GMR	IMR
BdF 40	15	2450	10	8	10.5	7.5
Kurt Klar	15	2466	9.5	7	10	7
Freedman	15	2455	9.5	7	10	7
O'Kelly GM	17	2406	11.5	8.5	12.5	9.5
O'Kelly M	17	2379	-	10	-	10
Nielsen	15	2457	10	7.5	10	7
NBC Volmac 15	15	2497	9.5	7	9.5	7
NBC Volmac 13	13	2377	-	7	-	7.5
NFSF 40	15	2480	9.5	7	9.5	7
Scotland 100	15	2443	9.5	7	10.5	7.5
Axelsson	15	2533	8	5	8.5	6
Keres	15	2466	9.5	6.5	10	7
Riga 25	19	2367	-	12	-	11.5
Bannet	13	2410	8	6	9.5	7
Simagin	15	2414	10	7.5	11	8

This table demonstrates that by using an ELO system the title norms relate better to the real playing strength of the participants. With one exception, it also shows that by using a rating system, the title norms will be somewhat higher. Obviously lower playing strength is insufficiently expressed in the present system.

One could even suggest that in the present system, organisers do prefer to have a weaker Grandmaster, instead of a stronger Master in their tournaments, because it increases the chance that title norms will be fulfilled. Using the ELO system will exclude this phenomenon. Apart from that, the above table also shows that tournaments which are supposed to be of equal strength under the present system, are not when using ratings. Compare, for instance, the NBC Volmac 15 tournament with the Scottish Centenary, or the Julius Nielsen Memorial and the Simagin Memorial.

2. A rather large number of players nowadays gain title norms for the International Master title in team tournaments, to which ICCF gave title norms mostly for propagandistic reasons. One could think of the European Team Championship, the Baltic Team Tournament, the Pacific Team Tournament, North Atlantic Team Tournament, Coppa Latina, Coppa Latina America-Europe, and so on.

In mostly all of these tournaments, except for the Final of the European Team Championship, title norms can be gained, although they are not a good reflection of the real playing strength at the different boards.

The chart below gives examples which are averaged in a summarised way.

	Board	Average Rating	Aver. Half Masternorm	ELO Masternorm
EU-MSM 3 Preliminaries	1- 6	2299	5.5 out 8	6
EU-MSM 3 Preliminaries	7-12	2248	6.5 out 8	-
Pacific T T	1- 6	2226	6 out 9	-
Baltic Tournament	1- 6	2306	11 out 15	10.5
North Atlantic 2	1- 6	2267	6.5 out 9	7
Cultural Cities 3	1- 4	2262	7 out 10	7
Coppa Latina 4	1- 4	2309	9 out 14	9.5
C L America-Europe 2	1- 4	2321	7.5 out 10	7

It is clear from this overview that on most boards of most team tournaments, it is easier to score a half masternorm under the present system than it would be if ratings are used. Exceptions are the top boards of the fifth Baltic tournament and of the Coppa Latina America-Europe. Moreover, one should be aware of the fact that the mentioned ELO-norms are valid only if there are enough players who have already proved their playing strength in the past. In almost all the cases mentioned above, there were not enough such players. Players who for whatever reason are not invited for such team tournaments, sometimes are very angry because they see other players gain the master title in an easy way. This indicates strongly that these tournaments should no longer have an exceptional position but to put them under the effect of a rating system so that they can be compared with other admitted tournaments.

3. The third objection is connected with the last one. In a certain way, it is the counterpart of it.

There are nowadays players who are excellently achieving without the possibility of gaining a title(norm). Such achievements can often compare with those of other players in tournaments in which titlenorms exist. This is for instance the case in the Finals and 3/4-Finals of the World Championship and in the Finals of the Olympiads. In these tournaments it is at present mostly impossible to gain a Grandmaster title or Grandmaster norm. Using a rating system, this will become possible in the future.

A vivid example is Palm (BRD) on Board 2 of the Final of the present Olympiad. He should have gained a Grandmaster norm.

In order to remove these iniquities, hard work has been done in recent years in ICCF, so it can be hoped that a transfer to ratings will be made in the near future.

ADOPTION OF THE RATING SYSTEM

The title regulations designed by the Qualifications Committee and the Rating System Working Group could be accepted by the ICCF according to the following working scheme :

- 1987
 - acceptance of the ICCF Rating system as described in the ICCF Rating System Administrative Rules.
 - Submittance of the title regulations to the National Federations.
 - Principle agreement or acceptance (after small possible amendments) of these regulations.
- 1988/89
 - In the case of principle agreements, written discussions about the amendments and assimilation of them in a definite design.
- 1.1.1989
 - Implementation of the new regulations, if they were accepted in 1987.
- 1.1.1990
 - Otherwise.

In January 1987, these proposals were sent to all Federations to be studied. In these proposals, it was attempted to connect the new and old regulations as closely as possible. For instance, the present Articles 40, 41 and 42 are incorporated as well as possible.

According to these regulations, all tournaments are classified into different categories. This depends on the average rating of the participants. The table below gives the categories.

Category	Average Rating	For Ladies	Category	Average Rating	For Ladies
I	2251 - 2275	1951 - 1975	IX	2451 - 2475	2151 - 2175
II	2276 - 2300	1976 - 2000	X	2476 - 2500	2176 - 2200
III	2301 - 2325	2001 - 2025	XI	2501 - 2525	2201 - 2225
IV	2326 - 2350	2026 - 2050	XII	2526 - 2550	2226 - 2250
V	2351 - 2375	2051 - 2075	XIII	2551 - 2575	2251 - 2275
VI	2376 - 2400	2076 - 2100	XIV	2576 - 2600	2276 - 2300
VII	2401 - 2425	2101 - 2125	XV	2601 - 2625	2301 - 2325
VIII	2426 - 2450	2126 - 2150	XVI	2626 - 2650	

The essence of the proposed title regulations is that for the gain of:

- a **Grandmaster** title, one should achieve according to a rating of 2600 in 1 or 2 tournaments with a total of at least 14 games.
- an **International Master** title, one should achieve according to a rating of at least 2450 in 1 or 2 tournaments with a total of at least 14 games.
- an **International Lady Master** title, a woman should achieve according to a rating of 2150 in 1 or 2 tournaments with a total of at least 14 games.

Moreover, the opposition in these tournaments has to fulfill certain minimum demands. There should be some guarantee that most of a title candidate's opponents have proved their playing strength in the past. Only if that is the case, can the tournament be a title tournament.

Apart from these considerations, the proposed title regulations give titles or title norms to certain achievements in all official ICCF tournaments. So even if these tournaments do not fulfill all the requirements to be a title tournament, there will always be titlenorms in official ICCF tournaments.



GAMES SECTION

Selected by Douglas Bryson

PLEASE SEND GAMES WITH ANNOTATIONS TO DOUGLAS M. BRYSON, 38 DUNCRYNE AVENUE, MOUNT VERNON, GLASGOW G32 0RQ.

We start this column with a game of which the first 20 moves have already appeared in News Bulletin No.8.

White: A. McGowan
Black: T. Johnston

(SCCA Championship 1985-87)

Opening: Ruy Lopez (C63)

- | | | |
|---|-----|------|
| 1 | e4 | e5 |
| 2 | Nf3 | Nc6 |
| 3 | Bb5 | f5?! |

The Schliemann Defence. Karpov has never been very impressive when playing against this opening, but it really shouldn't be much better than a slightly improved Latvian.

- | | | |
|----|------|------|
| 4 | Nc3 | fxe4 |
| 5 | Nxe4 | d5 |
| 6 | Nxe5 | dxe4 |
| 7 | Nxc6 | Qg5 |
| 8 | Qe2 | Nf6 |
| 9 | f4 | Qh4+ |
| 10 | g3 | Qh3 |
| 11 | Ne5+ | c6 |
| 12 | Bc4 | Bc5 |
| 13 | d3 | Ng4 |
| 14 | Nf7 | Bf2+ |

- | | | |
|----|------|-----|
| 15 | Kd1 | e3 |
| 16 | Qf3 | Nh6 |
| 17 | Qe4+ | Kf8 |
| 18 | Bxe3 | |



The main game in the theory books is Timman-Bohm, which continued 18 ...Bg4+, 19 Kd2 Re8, 20 Ne5. (1 - 0). In News Bulletin No. 8, David Kilgour lost to Robert Jackson with 18 ... Bf5, 19 Qe5 Qh5+, 20 Kd2 Bxe3+, 21 Qxe3 Nxf7, 22 Rael h6, 23 Qc5+ (1 - 0).

Here Black decides to take the piece.

- | | | |
|----|------|-----------|
| 18 | ... | Bxe3 (TN) |
| 19 | Qxe3 | Nxf7 |
| 20 | Qc5+ | kg8 |
| 21 | Qe7 | |

In News Bulletin No.8, I suggested 21 Re1 Bg4+, 22 Kd2 b6, 23 Bxf7+ Kxf7, 24 Re7+ Kg6?!, 25 Qg5 mate. But Black shouldn't volunteer for checkmate but play instead 24 ... Kf8, with the idea 25 Qd6 Qg2+, 26 Kc3 Qd5. So 21 Re1 Bg4+, 22 Kd2 b6, 23 Qe7! should be played 23 ... Rf8, 24 Qxf7+! or 23 ... h6, 24 Bxf7+. But 22 ... b6 is not a good move. After 22 ... h6!, 23 Re7 Bh5, 24 Rael Rf8, 25 Rxb7 (threat 26 Qxf8+) Kh7, 26 R1e7, White wins back the piece - but even here 26 ... Qg4 is worth a look, eg. 27 Bxf7 Rxf7! (Not 27 ... Qd1+, 28 Kc3 Bxf7, 29 Qf5+!) 28 Rxf7 Qd1+, 29 Kc3 Bxf7, 30 Rxf7 Qe1+, 31 Kb3 Qe6+, 32 Qc4 Rb8+, 33 Ka3 Qd6+, 34 b4 a5.

- | | | |
|----|-----|------|
| 21 | ... | Bg4+ |
| 22 | Kd2 | Bh5 |

(22 ... Qh5, 23 h3 and Black is in trouble. This was the idea behind 21 Qe7, choosing to leave the KR at home.) (A. McGowan)

What about 22 ... Rf8, 23 Rael h6, followed by Bh5 and Kh7 retaining the piece, or Bf3 followed by Bd5?

- | | | |
|----|------|-----|
| 23 | Rael | Rf8 |
| 24 | Be6! | |

(This prevents ... Qc8 and forces the queen to move from the defence of the bishop, when I planned Qg5 or Rhg1 and g4) (A. McGowan)

- | | | |
|----|-----|-------|
| 24 | ... | Bg4?! |
|----|-----|-------|

(He had to try 24 ... Qg2+, 25 Kc3, though Black still has serious problems after Rhg1 and g4.) (A. McGowan)

- | | | |
|----|-------|------|
| 25 | Bxf7+ | Rxf7 |
| 26 | Qd8+ | Rf8 |
| 27 | Re8 | |

1 0

An interesting game for theory. At the very least, winning the piece after 18 ... Bxe3 and 19 ... Nxf7 is better than the other moves tried in the position. It is worth noting that "Encyclopaedia"(!) gives Timman-Bohm but doesn't even consider taking the piece.

Alan McGowan mentions that he was aware of the above game but not Jackson-Kilgour. This raises the question of why Tom Johnston decided to go into an allegedly losing line. Did he not know of the above games or did he disagree with the assessments?

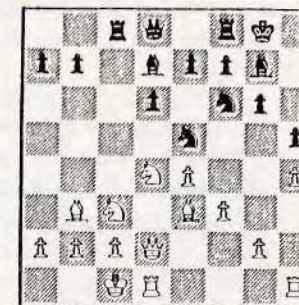


Coincidentally, Tom Johnston has also sent in one of his games. It too was a theoretical battle.

White: T.G. Johnston (Suffolk)
Black: P. Roe (Bedfordshire)

Opening: Sicilian Dragon (B78)

- | | | |
|----|-------|------|
| 1 | e4 | c5 |
| 2 | Nf3 | d6 |
| 3 | d4 | cxd4 |
| 4 | Nxd4 | Nf6 |
| 5 | Nc3 | g6 |
| 6 | Be3 | Bg7 |
| 7 | f3 | Nc6 |
| 8 | Qd2 | O-O |
| 9 | Bc4 | Bd7 |
| 10 | O-O-O | Rc8 |
| 11 | Bb3 | Ne5 |
| 12 | h4 | h5 |



A general point about the defensive problems of fianchetto set ups might be in order here. If you have all the pawns in front of your king in a line f7, g7, h7, then your opponent will find it very difficult to open a file, eg. he advances his 'h' pawn down to h6, then you simply play g6 - no open file and the White pawn blocks the attack.

The problem with the fianchetto is that you cannot avoid having files opened - White advances the pawn to h5, exchanges, and mates you down the 'h' file.

However, things are not so simple and the percentage success rate of the Dragon is probably as good as any other opening. White can over-sacrifice and Black wins on material.

12 ... h5 is a radical attempt to block the attack but White will eventually play g4 and open files anyway!

13 Bg5

This is all the fashion, but it is by no means an obvious move - I would suggest that most players would want to try 13 g4 to open the file, or 13 Bh6 to swap the fianchetto defender. Short won a game recently with Bh6. Bg5 was turned to when White wasn't getting anywhere with the more direct methods.

13 ... Nc4

13 ... Rc5 is the alternative here and looks OK for Black. A game from the Dubai Olympiad, Karpov-Georgiev, was not wholly convincing for White.

14 Qe2

I think that Levy's book on the Dragon suggested that 14 Bxc4 Rxc4, 15 Nb3 was good for White - threat e5. Can Black simply play 15 ... Rxc3?

14 ... Na5
15 Kbl a6

Chapter 12, "Winning Chess" by Chernev & Reinfeld, Black sets up "No Retreat" for the N on d4. Don't waste time reading pretentious tomes like "My System" - learn how to win your opponent's pieces!

16 g4

File opening.

16 ... e5

Piece winning.

17 gxh5 exd4
18 Nd5 gxh5
19 Rhg1 Kh8
20 Rxd4

Mr. Roe had been expecting 20 e5 dxe5, 21 Qxe5 when he intended ... Ng4, "reaching a good endgame in all variations".

It is not surprising that he expected this, because John Nunn had suggested 20 e5 when annotating his game against Mestel from London '86. See New In Chess Yearbook No.5. Is 20 Rxd4 an improvement?

20 ... Nxb3??

Well, it is after this - Black swaps his knight for a bishop which was no longer participating in the attack. 20 ... Nc6 is better, then 21 Rd1 Ne5 and if 22 f4 Bg4.

What did White intend after 20 ... Nc6, well I just don't know - hence the repeated requests for annotated games!

21 axb3 Be6
22 Qd2 Bxd5

White threatened 23 Bxf6 Bxf6, 24 Qh6+. If 22 ... Kh7, 23 e5!

It seems that Black cannot now break the attack.

23 Rxd5 Qe7
24 Rf5 Nxe4
25 fxe4 Qxe4
26 Bf6

1 0



And now a game from Willie McGlinchey, OTB rating 1350, against George Pyrich, 2125. According to Willie, this rating disparity categorises George as a "Heffalump", as in Simon Webb's "Chess for Tigers"!

White: G.D. Pyrich

Black: W. McGlinchey

(Scottish Centenary Cup)

Opening: Ruy Lopez (C88)

(Notes by W. McGlinchey)

1 e4 e5
2 Nf3 Nc6
3 Bb5 a6
4 Ba4 Nf6
5 O-O Be7
6 Re1 b5
7 Bb3 O-O
8 a4

Anti-Marshall.

8 ... Bb7
9 d3 d6

10 Nc3 Na5
11 Ba2 b4
12 Ne2 c5
13 Ng3 b3
14 cxb3 Nc6
15 b4!

Giving the pawn back at once was a surprise.

15 ... Nxb4
16 Bc4 Bc8
17 h3

To stop me pinning his knight, but I've a better idea.

17 ... Be6!
18 Bxe6 fxe6
19 Ng5 Qd7
20 Qb3 d5!
21 exd5 Qxd5

And not exd5 because of Rxe5.

22 Ra3

If 22 Qxd5 exd5, 23 Rxe5 Bd6 or 22 Qxd5 Nfxd5, 23 Rxe5 Nxd3, 24 Rxe6 Nxc1.

22 ... Nc6!!

This was (for me) a hard move to find, otherwise I couldn't have played ... Be6. Now I could only wait and see if my "Heffalump" opponent would fall into my trap.

23 Nxe6??

This move looks good - the N cannot be captured, it wins a pawn, attacks a rook and there is a discovered check if the queen moves away.

23 ... c4!

You have to be brave!

24 Qxc4

24 dxc4 loses a piece.

24 ... Bxa3

Pure cheek!

25 bxa3

Forced. If 25 Nxf8 Bxf8 wins a piece.

25 ... Rfc8

26 Nf5 Qxc4

27 dxc4 Ra7

28 Be3 Rd7

29 Nc5 R7d8

30 Nxa6 Ra8

31 Nb4 Nxb4

Nd4 might be better here.

32 axb4 Rxa4

33 Rb1 Kf7

34 c5 g6

35 Nd6+ Ke6

36 b5 Rda8

37 Rb3 Nd5

38 Bd2 Ra2

39 Ne4 Rc2

40 b6 Ne7

41 Rd3 Ra1+

42 Kh2 Nf5

43 Ng5+ Ke7

44 Rb3?

A blunder - if he had played g3 first, then he wins.

44 ... Rxd2

45 b7 R2d1

46 g3 Rh1+

47 Kg2 Rag1+

48 Kf3 Nd4+

49 Ke4 Nc6

50 b8=Q Nxb8

And eventually - ½ - ½

Next, we have two annotated short games provided by our Treasurer, George Pyrich.



Some time ago, I decided to try my luck in the VI/VII ICCF World Cup. In due course, my pairing notice arrived and play began last December. Some six months later, I have already completed two games. Both are interesting brevities.

White: George Krauss, Jr. (USA)

Black: George Pyrich (GBS)

Opening: Pirc Defence (B09)

- 1 e4 d6
- 2 d4 Nf6
- 3 Nc3 g6

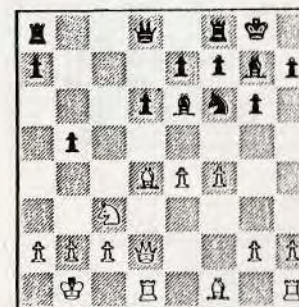
Over the years, this defence has served me well over-the-board, but unfortunately not so well in correspondence play - my game against Alan Tankel in the Scottish Centenary Cup being one unhappy memory - 4 Bc4 Bg7, 5 Qe2 Nc6, 6 Be3 O-O, 7 O-O Nxe4, 8 Bxf7+ Rxf7, 9 Nxe4 d5, 10 Ng5 Rf8, 11 h4 h5, 12 N1h3 Qd6, 13 f3 e5, 14 dxe5 Qxe5, 15 c3 Bxh3, 16 gxlh3 Rfe8, 17 Rhel Ne7, 18 Qd2 Qg3, 19 Bc5 Be5, 20 Ne6 c6, 21 f4 (1 - 0)

- 4 f4 Bg7
- 5 Nf3 O-O
- 6 Be3

This move reminded me of another disaster - against Brian Martin in the 1984/85 Scottish Championship - 6 Be3 Nc6, 7 h3 e5, 8 dxe5 dxe5, 9 Qxd8 Rxd8, 10 fxe5 Ne8, 11 Bg5 Rd7, 12 Bb5 a6, 13 Bxc6 bxc6, 14 O-O Rb8, 15 Rad1 h6, 16 Be3 g5, 17 Nd4 Rxb2, 18 Na4 Rxa2, 19 Nc5 Bxe5, 20 Nxd7 Bxd7, 21 Nf3 (1 - 0)

- 6 ... c5

- 7 Qd2 cxd4
- 8 Nxd4 Nc6
- 9 O-O-O Nxd4
- 10 Bxd4 Be6
- 11 Kbl b5?



Careless. I imagined that as the 'f' pawn doesn't defend e4, I could open lines quickly, helped by the possibility of Nxe4 after Qa5.

- 12 Bxb5 Qa5
- 13 Bc6!

The fairly obvious refutation.

- 13 ... Rab8
- 14 Nd5! Resigns

My opponent had accompanied his 14th move with a question mark in the column for my reply. I took the hint!

However, unlike the Scottish International Football Team, I can claim a World Cup victory.

White: George Pyrich (GBS)

Black: Andreas Pampa (BRD)

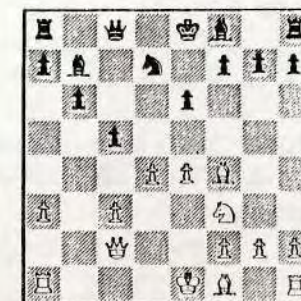
Opening: Queens Indian Defence (E12)

- 1 d4 Nf6
- 2 c4 e6
- 3 Nf3 b6
- 4 a3

I don't believe that this system should offer White any advantage (a defensive pawn move to prevent a check), but the results of numerous games in recent Informators would indicate otherwise.

- 4 ... Bb7
- 5 Nc3 d5
- 6 cxd5 Nxd5
- 7 Qc2 c5
- 8 e4 Nxc3
- 9 bxc3 Nd7
- 10 Bf4 Qc8?

Usual is Rc8 - I actually wrote 1838 in my scorebook, then noticed he'd played 4838. The idea is to attempt to exchange queens (after cxd4) or bishops (Ba6). However, this seemed rather passive and I felt that next move was justified.



- 11 d5! cxd5
- 12 exd5 Bxd5
- 13 O-O-O

Already, it seems White is winning. At the time, I couldn't see a good defence for Black. If Be6, then 14 Ng5 or if Nf6, then 14 Bb5+ Bc6, 15 Rhel+ Be7, 16 Bd6.

- 13 ... Qb7?

Qc6 was better, although 14 Bd3 with 15 Rhel is very strong for White.

- 14 Bb5 O-O-O
- 15 Rxd5! Resigns

WE WIN SOME . . . WE LOSE SOME

John Hawkes

Those of us who decorate publications like SCCA News Bulletin with annotations of their games create for themselves an inevitable aura of invincibility.

We always show-off our victories, it seems, and the readers can be excused for believing that we never lose!

This is a balanced article - a win and a loss played in SCCA's Centenary Tournament. They are both of "miniature" dimensions but contain plenty of excitement - the chess equivalent of Cup-tie football! Both games involve a knight sacrifice on e5 . . . and both games see Black castling late and decisively on move 16!

Scottish Centenary Cup Tournament
1st Round - 1985-86

White: C. Willey

Black: J.E. Hawkes

Opening: Dutch Defence

1 d4 f5
2 Bg5

When you play the Dutch you have to be ready for this, the Staunton Gambit 2. e4, and other oddball variations. Ready - and confident in handling positions which are a bit different.

2 ... Nf6

An alternative with a lot going for it is 2 ... c6!?

3 Bxf6 exf6
4 e3

A critical line is 4 c4 Bb4+, 5 Nc3 Bxc3+!?, 6 bxc3 b6, 7 Qc2 g6, 8 h4 Nc6?!, 9 h5 Kf7, 10 g4! (Nesic-Vasiliev, CC 1977-78)

4 ... Qe7!?

Not as barmy as it first looks. Black has threats of Qb4+ and f5-f4, and the KB is coming out sideways.

5 Nc3 c6
6 Bd3 d5
7 Qf3 g6
8 h4 h5
9 Nh3

White's big-deal is getting the knight to f4. He can also reach that "wonder" square via e2 as in the 1958 game, Milev-Farre, which went 9 Nge2 Be6, 10 0-0-0 Nd7, 11 Nf4 Bf7, 12 Qe2 Bh6.

9 ... Be6

It's not impossible to forget development and play 9 ... Kf7.

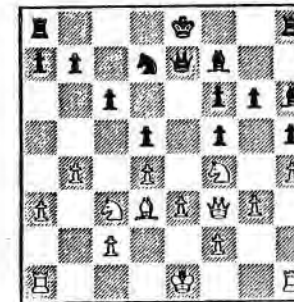
10 Nf4 Bf7
11 a3

Preventing ... Qb4, and maybe preparing to "self-destruct" on the queenside?

11 ... Nd7
12 b4?

Self-destruction it is! I suppose if one's never seen the variation before, one might think White's position superior enough to stand any sort of abuse!

12 ... Bh6
13 g3



Yes, 13 ... a5 was strong - but wrong! There's something much less obvious - and much better.

13 ... Ne5!
14 dxe5 fxe5
15 Nxe6 Bxe6
16 Bxf5

And White goes down the tubes faster than he needs to.

16 ... 0-0!
17 g4 e4
18 Qg3 Qg7
19 Be6+ Kh8
0 1

Because of 20 Kd2 Qd4+!



Scottish Centenary Cup Tournament
1st Round - 1985-86

White: J.E. Hawkes

Black: C.R. Chandler

Opening: Ruy Lopez

1 e4 e5
2 Nf3 Nc6
3 Bb5 f5

Not welcome when you play the Schliemann yourself!

I didn't hesitate to play what's rated as very solid for White.

4 d3 fxe4
5 dxe4 Nf6
6 Nbd2!?

I had to find one of the more obscure sub-variants as Cliff is an expert on 3 ... f5, and I know why he plays it! The OTB game Tseitlin-Asakarov, 1983, illustrates the main line dramatically - 6 0-0 d6, 7 Nc3 Be7, 8 Nd5 0-0, 9 Ng5 Kh8, 10 Bc4 Nxd5, 11 Nxb7 Rf4, 12 Bxf4 Nxf4, 13 g3 Nh3+, 14 Kh1 Qe8 and 0:1 (25 moves).

6 ... Bc5
7 Nb3 Bb6
8 c4!? Nxe4!?

Now I had to put together a refutation. In the Finjub-20 Tournament, Hintikka-Aulaskari went: 8 ... Qe7, 9 Bxc6 bxc6, 10 Qc2 a5, 11 a4 d5!, 12 0-0! with a fairly level game; the side one prefers being very much "une question de goût".

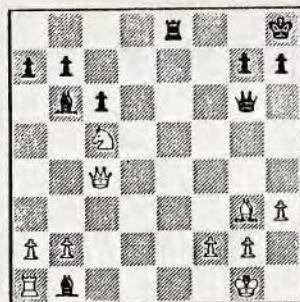
9 0-0 d6
10 Qe2 Bf5
11 e5

I had to resort to this hyper-complexity to prove my "accidental" pawn sac. Around this point, Cliff wrote to me saying, "If I manage to win this game - I'll have to annotate it!" Black's version of events would make interesting reading.

11 ... Nxc5
12 Bg5 Qd7

Overseas Subscribers

Subscription for one year's editions of the Scottish CCA News Bulletin can be obtained from the Editor for £5 p.a. (inclusive of postage)



13 Nxe5! dxе5
 Not 13 ... Qe6, 14 Nd4! Qxe5,
 15 Qxe5 dxе5, 16 Bxc6+ bxc6,
 17 Nxf5 Kf7, 18 Ne3 ±
 14 Bxc6

All these moves were needing lots of analysis time: double the normal ration. On 14 Nxc5 Bxc5, 15 Bxc6 Qxc6, 16 Qxe5+ Be6! I can't even win the piece back.

14 ... Qxc6
 15 Qxe5+ Qe6
 16 Rfel

The high point in my calculations - I get the piece back, the pawns are equal - but I'm completely burnt out!

16 ... 0-0!
 17 Nxc5 Qg6

The counter-attack sets in immediately.

18 Bh4 Rae8
 19 Qd5+ Kh8
 20 Rxe8 Rxe8
 21 Bg3 Bb1!

A classy touch from the British Champion.

22 h3 c6
 23 Qc4

23 ... Bxa2!

An unlikely winning move. Naturally, after seeing everything else, he sees 23 ... Re1+, 24 Kh2 Bd3, 25 Qf4! Bxc5, 26 Rxe1, and White is the exchange up. All I could do was to resign. (0 : 1)

White: Mrs. M. Leask
 Black: J. Kelly



Openings Tournament OT.2

Opening: Dutch Staunton Defence

1	d4	f5
2	e4	fxe4
3	f3	Nc6
4	fxe4	e5
5	Nf3	d6
6	Be3	Nf6
7	Nc3	Bg4
8	Be2	g6
9	d5	Nce7
10	Ng5	Bd7
11	0-0	Bg7
12	Qd3	0-0
13	Rf2	a6
14	Raf1	b5
15	b4	Nc8
16	Ne6	Bxe6
17	de6	Qe7
18	Nd5	Resigns

INTERNATIONAL REPORT (by Alan Borwell)

With our changeover in International Secretary, we do not have a full report for this News Bulletin, but Philip Giulian will no doubt supply a comprehensive one for our next edition. Details of results for Olympiad X Prelims, European IT and 2nd North Atlantic IT are provided in the next four pages. It can be seen that Scotland is doing particularly well in the North Atlantic event, where we are just behind England 63%, Portugal 61% and France 58%. Scotland has 57%.

A new cycle of Olympiad and European Team Tournaments is now imminent. The Selection Committee of the Association met recently to choose the team to represent Scotland in the Xth Olympiad Preliminary Group, due to commence play in November this year - the draw for sections will take place at the ICCF Congress in September. The next European Team Tournament is expected to begin during 1989.

In selecting Scotland's teams, the committee comprising of George Livie, Richard Beecham and Philip Giulian, take into account the responses received to questionnaires sent to all potential players about availability, results in domestic and international events and ICCF/SCCA gradings over a representative period. Of course, current membership of SCCA is a prerequisite to selection. Unfortunately, one or two of our strongest players are unable to play or have not responded to enquiries about availability.

Scotland's team for the Xth Olympiad, in board order, will be as follows:

	ICCF Title	ICCF Grading		ICCF Title	ICCF Grading
Board 1 - D.M. Bryson	GM	2565	Board 4 - I.S. Wickens	½ IM	2470
Board 2 - C.A. McEab	(FIDE IM)	(2415)	Board 5 - P.M. Giulian	-	2370
Board 3 - A.J. Norris	½ IM	2470	Board 6 - D.A. Kilgour	-	2365

Team Captain will be our new International Secretary, Philip Giulian.

Alan Norris, the 1984/6 Scottish Champion, has been selected as Scotland's nominated player to participate in the next World Chess Championship Semi-final stages, which are also due to commence later this year. Currently both Philip Giulian and Alan Borwell are competing in World Semifinal Sections, and Tim Wickens in the European Individual Championship Final. Reports on their progress will be featured in future editions of the News Bulletin.

Some recent results reported in friendly international matches are:

v France		v National Correspondence Chess Club (England)			
Bd 2	T.J. Craig 2	Bd 1	I.A. Marks 0	Bd 10	I. Mackintosh 1 ½
		Bd 3	G. Wood ½ ½	Bd 13	R. Rough 0 ½
		Bd 4	K.V.C. Stewart 2	Bd 16	J.C. McKillop 2
		Bd 7	G.R. Spratt 0 ½	Bd 17	D.L. Gillespie ½ 1
		Bd 8	D. Savage 1 0	Bd 18	J. Merrifield 0 0
		Bd 6	J.M.I. Ryan ½	Bd 9	J.S. Murray 2
		Bd 8	K.V.C. Stewart ½ ½		
		Bd 21	I.M. Campbell 1		

In our next issue, it is hoped to reproduce crosstables of all friendly international matches in progress. Could players please ensure that all results are reported as soon as games are completed to Philip M. Giulian, 10 Broomfield Avenue, Newton Mearns, Glasgow G77 5HR.

Reader's letters :-

There are always two sides to every game of chess but there are also usually two sides to every story!

The following letter appeared in our previous edition

A COSTLY BUSINESS?

13p per game or 23p per move!

On four occasions recently, an SCCA member (who shall be anonymous) sent his opponent window envelopes with a mint 13p postage stamp overlaid with clear sellotape. The GPO made a surcharge of "23p to pay".

The seeming motive and certain penalty are illuminated by the subject heading. Possible gullible SCCA members may adopt this "bright idea" if their first receipt of mail from this anonymous perpetrator does not incur the 23p surcharge. Many members thereby could fall victim to the 23p surcharge.

Our aggrieved member rightly states that such practices could give the SCCA a bad image! (Editor)

Shortly after its publication, I received the following contrite letter from a most embarrassed member (who I also feel should remain anonymous!)...

"Re page 17 'A Costly Business' in the April edition of the Bulletin. Recovering from the shock of finding myself "the perpetrator", I wish to explain and apologise for any distress caused to a fellow member.

A couple of years ago, a number of "opponents" in correspondence games (before joining the SCCA) were writing to me asking why I was sending postcards and envelopes without any postage stamps on, involving them in extra cost. There were too many to be merely an oversight on my part. I could only assume that they had "dropped off" en route. I then took extra care to stick the stamps cleanly and evenly.

No improvement - my opponents were by now irate to say the least. Out of frustration at the poor adhesive qualities of GPO stamps, I got into the habit (obviously a bad one) of ensuring that they would not come off in transit.

There was never any attempt to defraud the GPO and I have never sent an envelope back with the same stamp on it, franked or unfranked. Obviously, my naivety is out of place with the modern GPO who probably, quite rightly, are on the look-out for "fiddles". No profit has ever been made by me from this practice.

If you would forward the name of the poor unfortunate who suffered at my hands, I will gladly refund the cost and any compensation for the distress caused.

I am grateful for the dangers in such a practice being revealed to me. If the person wishes to remain anonymous, I will refund the loss to yourself to pass on, if this meets with your approval. If the "victim" was Mr..... who recently resigned his games against me because of this practice, then I insist that he be awarded the games (my conscience would not rest otherwise).

I will, of course, no longer persist in this practice and will risk the "adhesive" qualities of GPO stamps. In my defence, I can only claim "stupidity"; whether that is less culpable than clever criminality, I do not know. This is the first case that has been brought to my attention - if any others come to light within the SCCA (ie. someone suffering in silence?), perhaps you may be able to ask through your next issue. I appreciate the anonymity of your column; you can imagine the embarrassment I feel.

I hope you will see this letter as an explanation, which it is, rather than someone "caught with his fingers in the till" getting out from under. I can only repeat that I have never made a penny. I hope that the SCCA has not had its image too badly tarnished by my stupidity."

I am sure both of our members have learned something from this experience. We all tend to assume that our opponents have evolved some devious psychological plot when something like this happens. In this case, it was a good idea which simply came "unstuck"!!

Letter received from Allan Hislop



"I see there has been some discussion about notation and I should like to add support for a change from English Descriptive to Algebraic for all tournaments in the SCCA.

While many of us are quite happy with Descriptive, I think we should adopt Algebraic because it is more concise and is understood internationally.

Whether we adopt it or not, the system should be set out in the Rules Brochure.

I agree with Richard Beecham that where it is being used it is often inaccurately written down and this is seen in the games Controllers handle. Players often fail to use lower case letters for the file and, when using the shortened form, fail to use the file letter when an ambiguous move occurs.

The suggestion that the numerical system is the most correct is probably true, but I have never been happy using it as it did not seem that I was making a chess move when writing it down. It is too clinical. Algebraic will do for now, as Richard suggests."



The following two letters have been received from Mr. G.E. Wallwork, Manchester

"May I refer you to page 5 of SCCA News Bulletin No.23, and in particular to the text which is identified against my name.

If 1 d3 (Mieses) is substituted for 1 d4 - which to my recall is the opening suggested in my original letter - the resulting position is much more strategic, I think you will agree. I suspect that 1 d3 is an innovation to most, if not all, members of the SCCA stable."

"Recent mental gymnastics failed to spotlight an ideal word to convey the right idea of the Handicap Tournament. I concur that the present title is a misnomer and share the lack of enthusiasm for the alternative titles which have been proposed.

In my judgement, the structure of the tourney is reflected more adequately by a less colourful word and my suggestion is: 'Ladder Tournament'.

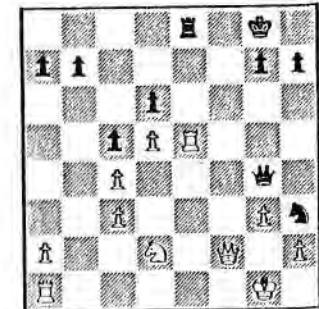
Parallel with ascending and descending the rungs of a ladder, members are elevated and relegated through the classes in sympathy with their results.

The structure of the Handicap Tourney is fully maintained if each rung of the 'ladder' represents a unit of five games.

Speaking light-heartedly, one could call it 'Snakes and Ladders' Tournament! "



ANALYSIS COMPETITION by Douglas Bryson



Apologies to anyone who spent any length of time on the diagram and couldn't understand why the solution was so obvious. I had underestimated the Black position - my intended solution was: 1 Kf1 (best king move) Rxe5, 2 Qg2 Rf5+, 3 Kf1 h5 (a necessary subtlety, or so I thought), 4 a4 h4, 5 a5 Ng5, 6 Rcl h3, 7 Qgl Re5+, 8 Kf1 Qe2 mate - 3 ... h5, h4 to deflect the queen from covering e2.

Not necessary, since 1 Kf1 Rxe5, 2 Qg2 Re3f and the game is over with the threat of Qf5+.

In the other line, if 1 Kg2 Rxe5, 2 Qf3 Re2+, 3 Kh1 (3 Kf1 Qxf3+, 4 Nxcl Rf2+) Rxd2, 4 Qxg4 Nf2+ wins.

Perfect solutions were sent by GRAHAM MORTON and COLIN McNAB, but the prize goes to KENNY BEATON, mainly because in addition to the lines above he investigated 1 Kf1 Rxe5, 2 Qg2 Qf5+, 3 Qf3 Qc2, 4 Qg4 Ng5, 5 h4 h5, 6 Qd1 Qd3, 7 Kf2 Nh3+, 8 Kg2 Rc2, 9 Kxh3 Qf5+ mating!!

Winning Continuations
from page 13
Solutions

- A** 1 ... Qe2!
2 Qxe2 R7xe2, 3 b3 Rb2!
4 c4 Rbbl 0 : 1
Petrov - Karaptchansky (8th CC Bulgaria)
- B** 1 ... Bf4+!
2 Kd4 Qf2+, 3 Kc3 Rd8, 4 Nc4 Be5+!
0 : 1
Quite beautiful, the two Bishop checks.
Titjen - Stilling (CC 1966)
- C** 1 ... Nc3+!
2 Nxc3 bxc3, 3 b3 Qa6, 4 Rd4 Ra8,
5 Ra4 Qxa4!, 6 bxa4 Rxa4, 7 Ba7 Ra8,
8 Re3 Bb4!! 0 : 1.
Exceptionally fine!
Essipenko - Sergeyev (USSR CC 1966)
- D** 1 ... Rxc4!
2 Bxc4 Nxf4, 3 Qf1 Qh1+, 4 Kf2 Qxh2+,
5 Ke3 Ng2+, 6 Kd3 Nxe1+, 7 Qxe1 Qxb2
and wins easily.
Rajnaĭ - Novinsky (Hungary CC 1971)
- E** 1 ... Rxc4!
2 Kf1 Rg1+, 3 Kxg1 Nh3+!, 4 Kg2 Qxf2+,
5 Kxh3 Qf3+, 6 Kh4 g5+, 7 Kxg5 Rg8+,
8 Kh6 Qh3 mate. The classic King hunt.
Sozenkov - Izakov (Mattison Memorial CC 1971)
- F** 1 ... Re4!
2 fxe4 Qxc4+!, 3 Ke3 Qxc3+, 4 Rd3 Qc2,
5 Qf1 Bb5, 6 Kf4 Bxd3, 7 Qg1 Qf2+. 0:1
Shestov - Krovatkin (USSR CC 1966)

BRITISH POSTAL CHESS FEDERATION

OPEN CHAMPIONSHIP

Open to all players residing in the British Isles.

Entry Fee - £3.00

Prizes

1st £200 2nd £100
3rd £50 4th & 5th £30 each
£10 to each remaining finalist

Preliminary Round sections are started whenever seven entries are received and competitors play one game against each of six opponents simultaneously.

The winner and runner-up from each section qualify to compete in a nine player Semi-Final section, and the winner and runner-up from each Semi-Final section go forward to the fifteen player Final.

Each competitor may enter as many sections as he wishes, whenever he wishes!

Send entries with name and address to:
A.M. Anderson, 3 Winterfield Gardens, Duns, Berwickshire, TD11 3EZ enclosing cheque or postal order payable to BPCF covering the entry fee of £3.00 per section.

FERNSCHACH, the official monthly magazine of the International Correspondence Chess Federation (ICCF)

Contains interesting games, all ICCF results and news of World and European Team and Individual competitions. Indispensable for all serious CC players.

Obtainable at £13.00 per annum from Chess Suppliers (Scotland) Ltd., PO Box 67, 15 Hope Street, Glasgow G2 6AB

Readers' letters/articles etc

This Bulletin was instigated to encourage members to express views about their Association and its activities, and all contributions will be welcomed:

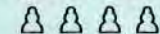
Articles - to the Editor
Games - to the Games Editor
Letters - to the Editor, the Secretary or any of our Controllers or Executive Committee Members

CHESS SUPPLIERS (SCOTLAND) LTD.

041-248-2887 (24 hour answerphone)

showroom open

Every day 10-30am to 5-00pm, excluding Sundays and Mondays



P.O. BOX 67

1st Floor

15 HOPE St.

GLASGOW G2 6AB

THE CHESS SPECIALISTS for individuals, clubs, schools and libraries

ORDERS ACCEPTED BY MAIL ORDER

SCOTTISH CHESS ASSOCIATION, est 1884

FULL DETAILS REGARDING ACTIVITIES AND MEMBERSHIP.....
FROM S.C.A. SECRETARY.....

Mrs L. Morrison
44 Stewart Clark Ave.
South Queensferry
West Lothian EH30 9QH

BRITISH POSTAL CHESS FEDERATION....

Details BPCF Secretary.....

M.C. PELTZ
14 Linden End,
AYLESBURY,
Bucks.

It's unwise to pay too much

but it's unwise
to pay too little.
If you deal with
the lowest bidder,
it's well to add
something for
the risk you run.
And if you do that,
you will have
enough to pay for
something better.

John Ruskin

The next move is up to you!

get full value from

**General
Accident**

Honestly, it's the best policy.