



Scottish
Correspondence
Chess



AUGUST 1990
No. 34
£1.50

~~~~~  
the latest opening theory ...  
~~~~~

WINNING WITH THE COLLE (2nd ed.) - K Smith
A revised, enlarged edition of this classic best-seller. An extraordinarily difficult opening for Black to meet!
pub. 1990 softcover/algebraic 260 pages £13.70

BEATING THE SICILIAN: CHAMELEON VARIATION - A Soltis
Fed up of meeting your opponent's pet, razor-sharp variation of the Sicilian? So was GM Andy Soltis until he discovered the Chameleon variation! White retains the option of going for an open or closed variation often taking Black by surprise with a rapid opening of the position.
pub. 1990 softcover/algebraic 108 pages £10.95

THE DYNAMIC CARO-KANN/BRONSTEIN-LARSEN & ORIGINAL - J Silman
Black plays the currently popular 4...Nf6 and can go for the sharp 5...g4 or the 'rediscovered' original 5...e4. Analysis, explanation, games - the lot!
pub. 1989 softcover/algebraic 190 pages £10.70

SPANISH INQUISITION - ZAITSEV VARIATION - E Schiller
All the latest theory and games on this currently popular and very sharp line, seen in the K-K matches, which offers winning chances for both sides.
pub. 1989 softcover/algebraic 106 pages £5.95

WHO'S AFRAID OF THE KING'S GAMBIT ACCEPTED? - E Schiller
A repertoire for the second player aimed at all those people who would play 1...e5 if only it weren't for 2.f4
pub. 1989 softcover/algebraic 90 pages £5.95

MODERN STONEMALL DUTCH - E Schiller
Currently one of the most popular and sharpest of Black's defences to 1.d4. In this new work, Eric Schiller provides all the theory and many complete games to enable Black to play this attacking system with confidence!
pub. 1989 softcover/algebraic 100 pages £5.95

HOW TO PLAY THE KING'S INDIAN ATTACK - E Schiller
A flexible system for White which is popular with many leading players. The basic concepts behind the KIA are easy to learn making the opening ideal for developing player. A strong emphasis is placed on explanation of ideas throughout the book.
pub. 1989 softcover/algebraic 102 pages £6.35

For a full list of books and other correspondence chess accessories available, write to:

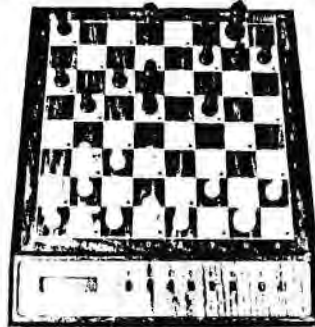
BRIAN ELEY & CO. DEARNE ROAD, BOLTON-ON-DEARNE, ROTHERHAM. S63 8JR
TEL. 0709 873653 (24HR. ANSWERING SERVICE)



MONTE CARLO and ACADEMY



Recommended by the
British Chess Federation



To mark the newly awarded Official Recommendation by the British Chess Federation of Mephisto Chess Computers, we introduce to you the Monte Carlo and Academy, market leaders in the march of computer progress in the simulation of human thinking methods at the highest levels of chess.

BOTH have exceptional playing strength with tournament, blitz and other time controls plus special low levels for hobby players not wishing to be overwhelmed! Enjoy the luxury of wooden, fully auto-sensory boards and carved wood felted pieces, together with a full range of superb features, including analysis of any position with evaluation via information displays, memory save of game in progress, hint, position set-up and verification, problem solving, take back and full game replay.

In addition, the Academy has an exclusive training facility designed by Grandmaster Dr Helmut Pfleger to enable the serious player to improve his play in all departments of the game, especially to sharpen and extend his opening repertoire and evaluate both middle and endgame strategies. The Academy's own style of play can even be adjusted to maximise variety in preparing for different types of opposition.

★ MONTE CARLO 175+ BCF

At £249 incl. adaptor and p/p a remarkable price for such quality and strength.

★ ACADEMY 190+ BCF

At £399 incl. adaptor and p/p certainly the best buy for the really strong player.

Mail order a speciality - call us any day, 9.00am to 9.00pm. Visitors welcome Mon-Sat, 9.00am to 5.00pm. We are on the main A1123, opposite Station Road, 1/4 miles west of the A1123/A10 Stratham roundabout. Ample parking - Vast range of stock - all leading models - Generous part-exchange allowances - Repairs and servicing of most makes - Access/Visa welcome

Countrywide
Computers
Where we
offer you
real choice



Victoria House
1 High Street
Wilburton, Ely
Cams CB6 3RB
☎ (0353) 740321

EDITORIAL

(by Alan Borwell)

August 1990

Sorry folks, but we're a little late again, although we hope that you will find much interesting reading. The range of articles is probably our best ever and for this I am most grateful to all contributors - keep up the good work!

Congratulations to Andy Muir on achieving his second norm, thereby qualifying for the IM title, and to George Sprott on winning his first Scottish Championship.

I shall be attending this year's ICCF Presidium in Bad Blankenburg, East Germany, when we hope to receive ratification for adding an International Ladies Section to our tournament celebrating 10 years of this magazine.

Don't forget to send your membership and entry forms back to Alan Hind by mid-October - let's make it a bumper new season!

INDEX OF CONTENTS

	Page(s)		Page(s)
Editorial	1	ICCF Ratings 1/7/90	38
Secretarial Notes/Book Review	3	SCCA Master & Other Titles	39
SCCA AGM Minutes	4/7	SCCA Ratings 1/7/90	40/44
SCCA Accounts to 31/3/90	8/11	Bits 'n' Pieces	45/50
Championship/Candidates 1988-90	12	Classic Games of CC	51/53
Championship/Candidates 1989-91	13	Games Section	54/62
Premiers/Quartets/Handicap/Openings	14/16	International Report	63/64
Winning Continuations	17	Olympiad	65/67
Scottish CCA League 1989/90	18/19	European	68/71
Scottish Centenary Cup/Opens	20/22	3rd North Atlantic Teams	72/73
ICCF Tournaments	22	ICCF Thematic Tourneys	73
Centenary Cup Final	23/26	Danny Kopec Game	74/79
2nd SCCA Open	27/30	Readers' Letters/Articles	79
European Town Teams Tournament	31/37	SCCA Office-Bearers 90/91	80

Subscription Rates Life Member - £50, Annual Member - £8 (incl Magazine)
1990-91 SCCA Magazine only - £5 per annum (incl postage)

ChessBase 2.3

The latest version of the original and No. 1 chess database from ChessBase UK, the complete chess software house.

"The greatest development in chess study since the invention of the printing press!"
Gary Kasparov

Support all the Year Round

Remember we guarantee on-line USER support by telephone 52 weeks a year

You can also call us for advice on chess theory training or for game printouts.

Send £4.00 for DEMO DISK — Includes 120 games.

So what is ChessBase? It's an extremely powerful chess database - the first of its kind in the world. It puts tens of thousands of games at your fingertips - instantly!

Its many features include

- Rapid sorting of games by players or openings.
- On-screen replay of games using superb graphics - rapid play-through - go to any point in the game instantly!
- ChessBase II allows you to analyse variations. Specialist disks now include sidelines and assessments
- Openings classified and sorted by name. ECO Informant system
- 250,000 games already on disk - no more poring through books.
- Games and diagrams can be printed out. Ideal for the club magazine.

MASTER PACKAGE

£249.50

Includes historic database from Philidor to Kasparov, openings key and illustrated manual, 800 World Championship games (1886-1987), database with approximately 10,000 games including ChessBase magazine 1-8, complete games of the Bundesliga 1985-88.

Optional 'Best of British' disk. Just add £6 (approx 1,000 games).

The ideal introduction to ChessBase

ChessBase Starter Pack £24.95 (inc. p & p)

- allows game storage and replay
- includes 500 (Atari) interesting games (360 IBM)

CHESSBASE MAGAZINE

1000 games every 2 months from the strongest tournaments. 100 annotated, special endings and combinations features. 1 year - 6 issues. £72.95.

CHESSPLAYING SOFTWARE

We now stock software for Commodore, Amiga, PCW, Atari and IBM

DATABASE READY SOON FOR BBC AND SPECTRUM

NEW FEATURES OF 2.3 INCLUDE:

MOUSE/KEYBOARD CONTROL

ANALYSIS

Generate on-screen analysis printout and go to any subvariation instantly and continue!

SUPER FAST GAME INPUT

The unique ChessBase intelligent algorithm enables you to touch the desired square/piece and the program guesses your move. Games can be inputted in as little as 3 minutes.

COMPARE

With one keystroke find the closest GM game to the one you have just played.

STATISTICS

Calculate Elo performances, success of openings, and see historical trends in openings.

SPECIALIST OPENINGS DISKS WRITTEN BY GMS

Our latest openings disks are written by Ftacnik, Ribli, Schussler, Yusupov, Rodriguez and Psakhis - all deeply annotated. 25 so far produced.



CHESSBASE RUNS ON ANY ATARI OR IBM COMPATIBLE COMPUTER

CONTACT:

International Master Malcolm Pein
ChessBase UK, 239a Ballard's Lane
London N3 1NG. Tel: 081-445 9906
Fax: 081-446 9125

SECRETARIAL NOTES (by Alan Hind)

Enclosed with this issue of the Magazine you will find Notes for the Season and the new Entry Form for season 1990/91.

You will also read in the AGM Minutes that the Association has an acute shortage of people prepared to help out with administrative tasks. Without individuals to run the events it would not matter how financially healthy our organisation is or if we keep down costs. Volunteers are essential - and preferably new ones. To reiterate the comments made in the "Scottish Chess" editorial, there are too many tasks being carried out by too few people. So, if you feel you can help by controlling a tournament (with help from existing officials) or in some other way, please let us know.

There are now two places to fill on the Executive - Assistant International Secretary and Assistant Publicity & Membership Officer. Both are essential and both need new people to come forward.

Help the Association if you can - it will not cost money but it will cost in time well spent and appreciated by others.



BOOK REVIEW

by Alan Borwell

"Chess for Tigers" by Simon Webb (2nd Edition).
Published by Pergamon Press. £4.95.

This is a superb little book of 120 fascinating pages with many useful tips for players wishing to improve their OTB or postal chess abilities. The reference to "cheetahs" as those beasts who suffer from very poor postal service is a nice one! There are sections on how "tigers" should catch "rabbits" or "heffalumps". Seriously though, this is a very helpful book, written in an attractive style and is highly recommended for content and value.

SCOTTISH CORRRESPONDENCE CHESS ASSOCIATION

Minutes of the Annual General Meeting held in Chess Suppliers (Scotland) Ltd., 15 Hope Street, Glasgow on Sunday 10th June 1990 at 2.30pm.

Present: AP Borwell (President), MT Dyer, A Hind, DM Livie, GWG Livie, IWS Mitchell, GD Pyrich, AJ Shaw and G Wood.

Apologies: CR Beecham, PM Giulian and A Maxwell.

Minutes of last Annual General Meeting

The Minutes of the previous AGM held on 4th June 1989, which were published in Bulletin No. 31, were approved.

President's Remarks

The President reported principally on two areas:

- (a) The SCCA is proposing to host the 1994 ICCF Congress. This assumes that the Constitution is amended to have annual rather than bi-annual Congresses, otherwise we will be hosting a Presidium. It was felt that the alternative offered to host the event in 1992 was too early to allow us to properly prepare. Our President will make the formal offer to ICCF for 1994.
- (b) The SCCA is pursuing the national recognition issue with ICCF. The decision may now be influenced by the current political changes taking place in the Eastern Bloc countries. Changes are also being proposed to the ICCF Statutes over the next few years to bring them up-to-date for the 1990s and beyond. Following from this it may be possible to achieve the aims set out in the York Agreement as accepted by the BPCF and Welsh organisations.

Secretary's Report

The Secretary's report made the following points:

- Ordinary membership numbers have fallen when compared with 1988/89 and there has been a consistent decline in the numbers participating in competitions, including teams in the SCCA League, which has reduced the number of divisions to 4 from 5. Publicity and membership ideas have come forward from one of our recent members, F. Andres. More people would be needed to organise events within the SCCA to meet increased membership volumes, particularly tournament controllers.
- The SCCA Open tournaments continue to be a success, although again numbers are declining.
- Response to the questionnaire on membership issues had been comprehensive and analysis had taken place with action where appropriate.
- The quality of the magazine remains at its high standard. Many thanks are due to the time and efforts of both Alan and Moira Borwell.
- It is sad to report that our Grading Officer, Graham Wood, has intimated that he will not be able to continue in this role. Graham has worked hard to upgrade the methods by which we calculate the gradings and our thanks were accorded to him.
- Internationally, Scotland's representatives in the major team and individual tournaments have had fair results. Ken McAlpine and Andrew Muir had achieved the necessary norms for IM titles and Mary Inglis a ½-norm in the Ladies Olympiad.
- Finance was healthy and our Treasurer would be making specific comment in his report.

Treasurer's Report

The Treasurer circulated copies of the audited accounts for the year ended 31st March 1990. (These are reproduced later in this magazine). These accounts show the relatively healthy state of our finances despite the reduction in membership and tournament fees. Two major sources of revenue which have increased are the SED Grand remitted to us by the SCA (which has increased by £100) and advertising revenue from adverts carried in the magazine (£285). The Auditor, Mr. Hamish Bell, had indicated his willingness to stand for re-election.

Fund-raising continues, with the "100 Club" contributing significantly to our funds. Next year there will be a contribution from sales of correspondence chess cards provided by the Clydesdale Bank who have supplied us with 50,000 and which should add over £500 to our funds.

Specific accounts held at the National Savings Bank and the National Girobank were questioned. The former was nominally opened for high interest purposes but has been superseded by the Nationwide Anglia account. The latter is there for receipt of overseas magazine subscriptions in foreign currency.

The accounts were unanimously accepted and a vote of appreciation was made to George Pyrich for the work he had carried out to produce the accounts.

Election of Office Bearers

The following were elected to the Executive Committee:

President	AP Borwell
Vice President	GWG Livie
Secretary	A Hind
Treasurer	GD Pyrich
Assistant Secretary	DM Livie
International Secretary	PM Giulian
Grading Officer	MT Dyer
Publicity & Membership Officer	AJ Shaw

The posts of Assistant International Secretary and Assistant Publicity and Membership Officer were unfilled and this again highlights the need to involve more individuals in the administration process. Permission to co-opt to the committee during the year was sought and granted.

Alan Borwell intimated that this was likely to be his last year as President.

The formation of an Editorial group to handle the magazine production was suggested and agreed. This to be covered at the next Executive meeting.

Election of Auditor

It was agreed that the present Auditor, Mr. Hamish Bell, be re-elected for the ensuing year.

Subscriptions

The following proposals for 1990/91 subscriptions were ratified:

Full membership (including Magazine)	£ 8
Life membership (excluding Magazine)	£50
Championship/Candidates entry fee	£ 5
Friendly internationals	£ 2
All other tournaments	£ 3
League player with Magazine	£ 7
League player without Magazine	£ 2

It was also proposed and agreed that the New Member Discount of £2 should continue.

Any Other Business

The Centenary International Tournament book was still being prepared and the President intimated that he hoped it would be ready for publication later this year.

SCOTTISH CORRESPONDENCE CHESS ASSOCIATION

FINANCIAL ACCOUNTS FOR THE YEAR ENDED 31st MARCH 1990

1989		GENERAL ACCOUNT	1990	
£	£	INCOME	£	£
		MEMBERSHIP FEES		
381.00		Annual (114)	343.00	
<u>98.05</u>		Life Members Fund	<u>114.69</u>	
479.05			457.69	
<u>48.00</u>	431.05	less Discount	<u>40.00</u>	417.69
		COMPETITION FEES		
331.00		Individual	290.00	
<u>137.00</u>		League	<u>122.00</u>	
468.00			412.00	
<u>222.00</u>	246.00	less Prizes	<u>240.00</u>	172.00
		BULLETIN		
868.42		Sales	820.12	
-		Adverts/Leaflets	<u>285.00</u>	
868.42			1105.12	
<u>639.36</u>	229.06	less Expenses	<u>739.12</u>	366.00
		GRANT		
	275.00	Scottish Chess Assoc		375.00
		ADJUDICATIONS		
33.00		Fees Received	6.00	
<u>40.00</u>	(7.00)	Fees Paid	<u>30.00</u>	(24.00)
	175.50	DONATIONS		197.50
	<u>1349.61</u>			<u>1504.19</u>

1989	GENERAL ACCOUNT EXPENDITURE	1990
	AFFILIATION FEES	
7.50	SCA	10.00
<u>60.00</u>	BPCF	<u>20.00</u>
		30.00
	ICCF	63.52
	BPCF CONFERENCE	-
	CONTROLLERS EXPENSES	218.98
	SECRETARIAL EXPENSES	279.64
	ADVERTS/STATIONERY	-
	BANK CHARGES	11.23
	INTEREST CHARGES	-
	CORPORATION TAX	47.75
	AUDITOR'S FEE	20.00
	MISCELLANEOUS	9.65
	<u>667.13</u>	<u>680.77</u>
	<u>682.48</u>	<u>823.42</u>
	SURPLUS FOR YEAR	
	LIFE MEMBERS ACCOUNT	
50.00	Membership Fees	50.00
<u>77.88</u>	Interest Received	<u>213.78</u>
	less transferred to	
	General Fund	114.69
	<u>29.83</u>	<u>149.09</u>
	SURPLUS FOR YEAR	

1989		INTERNATIONAL ACCOUNT	1990	
£	£	INCOME	£	£
304.00		LOTTERY SALES	-	
<u>175.00</u>	129.00	less Prizes	-	
		OPEN TOURNAMENT		
		Entry Fees	408.00	
	-	less Accrued Prizes	<u>221.10</u>	186.90
	83.00	INTERNATIONAL MATCH FEES		116.00
	203.29	INTEREST RECEIVED		354.79
		100 CLUB		
799.00		Subscriptions	886.00	
<u>441.50</u>	357.50	less Prizes	<u>437.50</u>	448.50
	<u>772.79</u>			<u>1106.19</u>
		EXPENDITURE		
		LOTTERY EXPENSES		
71.20		Printing & Expenses	-	
<u>12.50</u>	83.70	Licence	<u>12.50</u>	12.50
	1001.00	CENTENARY TOURNEY PRIZES		-
	350.00	ICCF CONGRESS		300.00
	<u>100.00</u>	CENTENARY TOURNEY BOOK		-
	<u>1534.70</u>			<u>312.50</u>
	<u>(761.91)</u>	SURPLUS/ (DEFICIT) FOR YEAR		<u>793.69</u>

BALANCE SHEET AS AT 31st MARCH 1990					
1989		ASSETS		1990	
£	£			£	£
(28.56)		CLYDESDALE BANK PLC			
433.69		Current Account		644.26	
		General Deposit A/c		-	
<u>1994.81</u>	2399.94	Internat Deposit A/c		<u>3098.14</u>	3742.40
	19.00	NATIONAL GIROBANK			19.00
	10.00	NATIONAL SAVINGS BANK			10.00
	3886.93	NATIONWIDE ANGLIA			4636.17
	<u>69.00</u>	DEBTORS			<u>60.00</u>
	<u>6384.87</u>				<u>8467.57</u>
		LESS LIABILITIES			
297.00		GENERAL ACCOUNT		392.40	
<u>554.65</u>	<u>851.65</u>	INTERNATIONAL ACCOUNT		<u>775.75</u>	<u>1168.15</u> *
	<u>5533.22</u>				<u>7299.42</u>
		REPRESENTING			
		CAPITAL ACCOUNT	OPENING BALANCE	SURPLUS	CLOSING BALANCE
			£	£	£
		General Fund	3184.57	823.42	4007.99
		Life Members Fund	883.13	149.09	1032.22
		International Fund	<u>1465.52</u>	<u>793.69</u>	<u>2259.21</u>
			<u>5533.22</u>	<u>1766.20</u>	<u>7299.42</u>
		*Notes:			
		Accrued Prizes	1015.75		
		Other Creditors	<u>152.40</u>		
			<u>1168.15</u>		

Auditor's Report

I have examined the foregoing accounts and have obtained such explanations as I consider necessary. In my opinion these accounts give a true and fair view of the state of the Association's affairs at 31st March 1990.

(H. B. Bell, C.A.)

CHAMPIONSHIP 88-90 Controller: A Maxwell

No.		1	2	3	4	5	6	7	8	9	10	Pts
1	C R BEECHAN	•	1	0	1	0	0	1	1/2	0	1/2	4
2	G H BIRD	0	•	0	0	0	1/2	1	0	1/2	1/2	2 1/2
3	M T DYER	1	1	•	1/2	0	1/2	1	0	1/2	1/2	5
4	R KILPATRICK	0	1	1/2	•	1	1	1	1/2	0	1/2	5 1/2
5	G D PYRICH	1	1	1	0	•	1/2	1	1/2	1/2	1/2	6
6	I REEMAN	1	1/2	1/2	0	1/2	•	1	1/2	1/2	1/2	5
7	M ROSS	0	0	0	0	0	0	•	0	0	0	0 1/6
8	G R SPROTT	1/2	1	1	1/2	1/2	1/2	1	•	1/2	1	6 1/2
9	JAB STEVENSON	1	1/2	1/2	1	1/2	1/2	1	1/2	•	1/2	6
10	G B WALLWORK	1/2	1/2	1/2	1/2	1/2	1/2	1	0	1/2	•	4 1/2

CANDIDATES 88-90 Controller: C R Beechan

No.		1	2	3	4	5	6	7	8	9	10	11	Pts
1	C BOYLE	•	1	1	0	1	1	1	1	0	1/2	1	7 1/2
2	R DICKSON	0	•	0	0	1/2	0	0	0				
3	K FRYER	0	•	•	1				0				
4	S GOWLAND	1	1	•	1	1	1/2	1/2	0		1		
5	D HARVEY	0	1	0	0	•	1/2	1	1	0	1/2	1	5
6	J M HERRIES	0	1/2	0	1/2	•	1/2	1/2	1/2	1/2	1/2	0	
7	I A MARKS	0	1	1/2	0	1/2	•	0	0	1	1		
8	M McBBTH	0	1	1/2	0	1/2	1	•	1/2	1	1		
9	P MCGOWAN	1	1	1	1	1	1/2	1	1/2	•	1	1	9
10	J V McINTYRE	1/2			1/2	1/2	0	0	0	•			
11	A TANKEL	0			0	0	1	0	0	0		•	

Entries to Scottish CCA Quartets and Handicap events can be made at any time, with games starting as soon as opponents can be arranged. All other individual tournaments and the SCCA League begin towards the end of each year, with entries to reach our Secretary, Alan Hind, by mid-October.

CHAMPIONSHIP 89-91 Controller: A Maxwell

No.		1	2	3	4	5	6	7	8	9	Pts
1	A KILPATRICK	•									
2	G D PYRICH		•					1/2			
3	J A B STEVENSON			•				1/2		1	
4	M J MOOHAN				•						
5	D HARVEY					•		0			
6	I S CAMPBELL						•				
7	C F BOYLE		1/2	1/2		1		•		1/2	
8	T J CRAIG								•		
9	A T HISLOP			0				1/2		•	

CANDIDATES 89-91 Controller: A Hind

No.		1	2	3	4	5	6	7	8	9	Pts
1	N DOWN	•	1						1		
2	S GOWLAND	0	•		1/2	0			0	0	
3	S L CLARK			•				1			
4	M McBBETH		1/2		•					1/2	
5	M COOPER		1			•		1/2		1/2	
6	D A GIBB						•		1/2		
7	I A MARKS			0		1/2		•	1/2	1/2	
8	I AIRD	0	1				1/2	1/2	•	0	
9	T THOMSON		1		1/2	1/2		1/2	1	•	

PREMIER TOURNAMENTS

Controller; Sections A-C : I S Campbell; Sections D/E : R S Montgomery

A	1	2	3	4	5	6	Pts
1 RA GIULIAN	●	0		00	1/2	0	
2 M MITCHELL	1	●		1/2			
3 RJ BURRIDGE			●	1/2		1/2	
4 B GOODWIN	11	1/2	1/2	●	1/2	00	4 1/2
5 JM HERRIES	1/2	1		1/2	●	00	
6 WM COOK	1		1/2	11	11	●	

B	1	2	3	4	5	6	Pts
1 NR McEwan	●	0		0	11		
2 JS CAIRNEY	1	●					
3 SR MITCHELL			●				
4 AVI CAMPBELL	1			●		11	
5 G REID	00				●	00	
6 KD ANDERSON				00	11	●	

C	1	2	3	4	5	6	Pts
1 A WRIGHT	●						
2 T THOMSON		●			1/2	1	
3 RS MONTGOMERY			●				
4 K SEYFRIED				●	00		
5 V HULME		0 1/2		11	●	11	
6 JRG LINKLATER	0				00	●	

D	1	2	3	4	5	6	Pts
1 J CASSIDY	●				0 1/2		
2 RF TURNER		●			0		
3 AD KILGARIFF			●		0		
4 P FERRY				●	0		
5 CC McKAY	1 1/2	1	1	1	●	11	
6 R BIRRELL					00	●	

E	1	2	3	4	5	6	Pts
1 A MAXWELL	●	1					
2 VS ROACH	0	●				00	
3 J MERRIFIELD			●				
4 MF PEARCE				●			
5 A NISBET					●		
6 A SWANN		11				●	

MAJOR TOURNAMENTS

Controller; Sections A/B : C A Macgregor

Sections C/D : G W G Livie

A	1	2	3	4	5	Pts
1 H McKEAN	●	00	11	00		
2 DR CUMMING	11	●	11	1/2	1/2	
3 DV GIBBS	00	00	●	00	00	0
4 P McCONNELL	11	1/2	11	●		
5 W HARPER		0 1/2	11		●	

B	1	2	3	4	5	Pts
1 D COSGROVE	●	10	10	11	10	
2 A ARMSTRONG	01	●	0 1/2		1/2	
3 RG EBDOM	01	1 1/2	●		1/2	
4 KJ GROSE	00			●		
5 PJ NOIR	01	1/2	1/2		●	

C	1	2	3	4	5	Pts
1 F ANDRES	●	00			00	
2 B MILLIGAN	11	●	1/2	00		
3 J TAYLOR		1/2	●			
4 SG MACKENZIE	11		●			
5 TN TALBOT	11				●	

D	1	2	3	4	5	Pts
1 F HALL	●		00			
2 CA MACGREGOR		●	00			
3 MH DUNN	11	11	●			
4 ME CROASDALE				●		
5 DW PENMAN					●	

QUARTETS 1989-90

(Controller - Ian W S Mitchell)

POSTAL KNIGHT	1	2	3	4	Pts	POSTAL SHIELD	1	2	3	4	Pts
1 R STOKES	●					1 N A DOWN	●	1	1	1	
2 A G B BIRD		●		1/2		2 J ANDERSON	0	●			
3 D SALTER			●			3 A WRIGHT	0		●		
4 R J BURRIDGE		1/2		●		4 T McMORRAN	0			●	

Q141	1	2	3	4	Pts	Q142	1	2	3	4	Pts
1 R BEACON	●	00	1/2	11	3	1 H McKEAN	●		00	00	
2 M H DUNN	11	●	0 1/2	1 1/2	4	2 D G PARSONS		●	00	00	
3 C C McKAY	1/2	1/2	1 1/2	●	4 1/2	3 J PARKER	11	11	●	1 1/2	5 1/2
4 D SALTER	00	1/2	00	●	1/2	4 D SALTER	11	11	0 1/2	●	4 1/2

Q143	1	2	3	4	Pts	Q144	1	2	3	4	Pts
1 R BEACON	●			1 1/2		1 W CAMERON	●			00	
2 T G JOHNSTON		●				2 K GORDON		●			
3 M F PEARCE			●			3 T MASON			●		
4 T W TALBOT	0 1/2			●		4 J R PARKER	11			●	

Q145	1	2	3	4	Pts	Q146	1	2	3	4	Pts
1 M MITCHELL	●		1/2			1 A MacKAY	●		0 1/2	-	
2 J S CAIRNEY		●				2 E A BAILEY		●	1	-	
3 S R CAPSEY	1/2		●	1 1/2		3 D R CUMMING	1/2	0	●	-	
4 D G McROBERTS			0 1/2	●		4 D McGARVA	-	-	-	●	W/D

Q147	1	2	3	4	Pts	Q148	1	2	3	4	Pts
1 H McKEAN	●					1 D R R ELLIS	●	0		11	
2 P J JACKSON		●				2 M D HOOD	1	●		01	
3 J G BLENCOVE			●			3 C DONKIN			●	0 1/2	
4 K J GROSE				●		4 A ARMSTRONG	00	01	1 1/2	●	2 1/2

Q149	1	2	3	4	Pts	Q150	1	2	3	4	Pts
1 R O'BRIEN	●		0	-		1 R J BURRIDGE	●	0			
2 A WRIGHT		●		-		2 I A MARKS	1	●	00	1	
3 S M YOUNG	1		●	-		3 R DOWSON		11	●		
4 D McGARVA	-	-	-	●	W/D	4 S WHITELOCK		0		●	

OPENINGS TOURNAMENTS (by Alan Hind)

Section OT1 (Sicilian 2 c3)

No	1	2	3	4	Pts	Pos
1 D V Gibbs	●	oo	oo	oo	o	4
2 S M Young		●				
3 M A Ellis		o	●	o		
4 T H Talbot			●			

Section OT2 (Sicilian 2 c3)

No	1	2	3	Pts	Pos
1 J Cassidy	●				
2 M R McEwan	●	½			
3 P McConnell	½	●			

Section OT3 (Pirc - Modern)

No	1	2	3	4	5	Pts	Pos
1 J Cassidy	●						
2 M A Ellis		●					
3 G Reid		oo	●				
4 M T Dyer				●			
5 J G Blencowe					●		



Please send games (preferably annotated) to Games Editor:

Douglas M. Bryson,
38 Duncryne Avenue,
Mount Vernon,
Glasgow G32 0RQ.



HANDICAP TOURNAMENT (by Allan Hislop)

I am pleased to report the Handicap is in good shape, with a further 24 new games being started since the beginning of the season.

I have two players awaiting more games to date (July). They are R. Beacon (2) awaiting one more opponent and D. Cumming (4) awaiting three more opponents. So if anyone wishes to challenge them via the Controller as per Rule 3 they can do so.

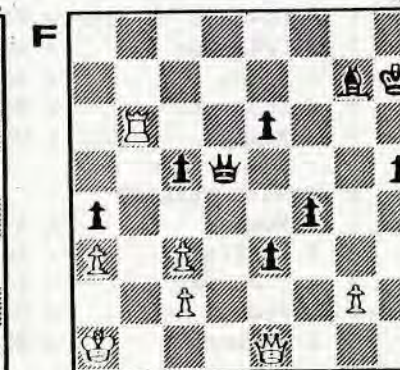
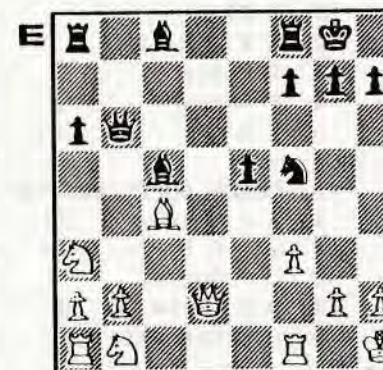
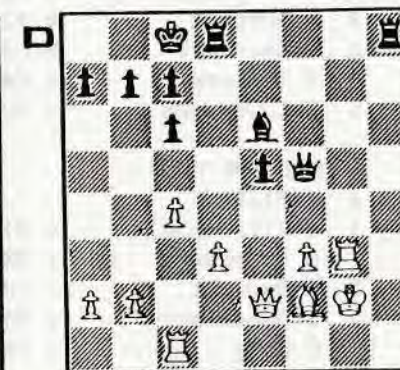
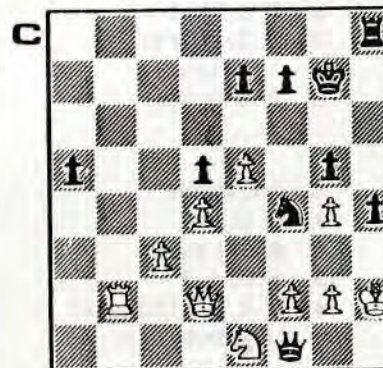
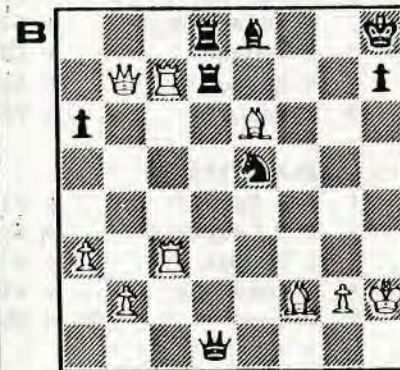
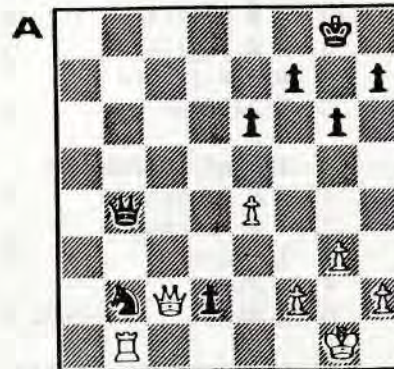
I must apologise for a mistake in the Handicap layout in the May issue of the magazine. It involved Paul McGowan who is playing G.A. Morton and R. Beacon but is not playing D. Salter.

WINNING CONTINUATIONS

(selected by John Hawkes)

BLACK TO MOVE

Solutions on Page 79



SCOTTISH CCA LEAGUE 1989/90

DIVISION 1

A CROWWOOD "A"

1	B Martin	1	v E1
2	D Quinn/J Doyle		v D2
3	P Rodger		v C3
4	V Hulme		v B4
5	A Maxwell		v F5

B STRBATHAM & BRITTON

1	C A McNab		v D1
2	S R Gillam		v C2
3	R A Inglis		v F3
4	Mrs M Inglis		v A4
5	R Haldane		v E5

C BLACK KNIGHT

1	G R Sprott		v F1
2	I S Campbell		v B2
3	I Reeman		v A3
4	T Johnston		v E4
5	G Wood	1 1/2	v D5

D THE ESTABLISHMENT

1	T S Wickens		v B1
2	C R Beecham		v A2
3	T J Craig		v E3
4	K Fryer		v F4
5	A Hind	0 1/2	v C5

E KIRKCALDY KINGS

1	G D Pyrich	0	v A1
2	A Burnett		v F2
3	I Marshall		v D3
4	T Thomson		v C4
5	M C Grayson		v B5

F PERTH CORRESPONDENTS

1	A P Borwell		v C1
2	D A Gibb		v E2
3	W Rutherford		v B3
4	J Falconer		v D4
5	P B Grant		v A5

DIVISION 2

A IRVINE

1	D Gillespie		v E1
2	G McPeake	00	v D2
3	T Barrett		v C3
4	J Shankland		v B4
5	G King		v F5

B CATHCART

1	A Grant		v D1
2	A T Hislop		v C2
3	S Freed		v F3
4	J R G Linklater		v A4
5	D McRoberts		v E5

C WANDERING DRAGONS "A"

1	S Gowland	00	v F1
2	D Crichton		v B2
3	C McKay		v A3
4	J Konarski		v E4
5	H Nimmo	00	v D5

D KNIGHTS OF THE SQUARE TABLE

1	B Eley		v B1
2	R W M Baxter	11	v A2
3	T Upton		v E3
4	P Cassar	0	v F4
5	N Down	11	v C5

E BRUTAL REALISM

1	M Ross		v A1
2	P Coffield	00	v F2
3	J S Murray		v D3
4	B Keenan		v C4
5	A Thomson		v B5

F CHESS SUPPLIERS "A"

1	A J Shaw	11	v C1
2	G V G Livie	11	v E2
3	C F Boyle		v B3
4	D M Livie	1	v D4
5	L R McKenzie		v A5

DIVISION 3

A KIRKINTILLOCH

1	A Swann		v E1
2	R Turner		v D2
3	P McConnell		v C3
4	V Harper		v B4
5	D Blackett	00	v F5

B CROWWOOD "B"

1	D L Gillespie		v D1
2	W J Hutchison	00	v C2
3	R Henery		v F3
4	C M Hutchison		v A4
5	R P Dunn		v E5

C GLASGOW POLYTECHNIC

1	D Finnie		v F1
2	A Tankel	11	v B2
3	J Lindsay		v A3
4	J Watson		v E4
5	J Arnold		v D5

D BWDGANH

1	M Moohan		v B1
2	P Ferry		v A2
3	A Kilgariff		v E3
4	M McGhee		v F4
5	M Mitchell		v C5

E WANDERING DRAGONS "B"

1	D Laing		v A1
2	P McCarron	00	v F2
3	C Donkin		v D3
4	P Young		v C4
5	C Dowle		v B5

F VICTORIA

1	R E Clapham		v C1
2	F Stevenson	11	v E2
3	J Anderson		v B3
4	M Chalmers		v D4
5	N Ferrie	11	v A5

DIVISION 4

A WANDERING DRAGONS "C"

1	G Sanderson		v E1
2	D Poots		v D2
3	Ms A Donkin	00	v C3
4	C Stewart		v B4
5	D Morgan		v F5

B SAUGHTON

1	D Buchan	00	v D1
2	V McKenzie	00	v C2
3	B Morrice		v F3
4	C McGuire		v A4
5	A H All		v E5

C KNIGHT SAC

1	T Tait		v F1
2	P Tait	00	v B2
3	R Holland	11	v A3
4	C Paterson	00	v E4
5	R Stokes		v D5

D HAVICK SUPERKINGS

1	A Armstrong	11	v B1
2	J Taylor		v A2
3	E Brewster		v E3
4	B Milligan	00	v F4
5	L Kilday		v C5

E ROCKY MEETS MARILYN MONROE

1	G Reid		v A1
2	A Cowan		v F2
3	L Stephenson		v D3
4	S A McDonald	11	v C4
5	R McDonald		v B5

F FLYING TRAPOTS

1	R D Hirsch		v C1
2	J E Fewkes		v E2
3	N W Savage		v B3
4	M Nesbit	11	v D4
5	D V Gibbs		v A5

SCOTTISH CENTENARY CUP FINAL

All games have now been concluded in the Final and the complete table is shown below. The joint winners, Ernie Wood and Mark Thomas had been decided before publication of our last edition but competition between the remaining finalists was very keen, only 2 pts separating 3rd and last positions. Competitors are thanked for their participation and sportsmanship in a very successful event.

	1	2	3	4	5	6	7	Pts	Pos
1 J Copley (Shropshire)	•	½	1	1	0	½	½	3½	3
2 E Wood (Manchester)	½	•	½	1	½	1	1	4½	1=
3 D Quinn (Greenock)	0	½	•	1	0	½	1	3	4
4 A G B Bird (London)	0	0	0	•	0	1	1	2	5=
5 M Thomas (Notttingham)	1	½	1	1	•	½	½	4½	1=
6 V V Griffiths (Northampton)	½	0	½	0	½	•	½	2	5=
7 D Neil (Carlisle)	½	0	0	0	½	½	•	1½	7

(by Douglas Livie)

SCOTTISH OPEN TOURNAMENT SEMI-FINALS

Section A	1	2	3	4	5	6	7
1 GE WALLVORK	•	1	1	1	1	1	1
2 B MARTIN	0	•	1	1	1	½	1
3 WR SHAW	0	•	1	0	0	0	0
4 JG O'DONNELL	0	0	0	•	0	0	0
5 N DOWN	1	1	1	•	1	1	1
6 L STEPHENSON	0	0	1	1	0	•	0
7 M CHARALANBOUS	½	1	1	1	•	1	1

Section B	1	2	3	4	5	6	7	8
1 N DOWN	•	1	1	1	1	1	1	1
2 WD TAYLOR	•	•	1	1	1	1	½	1
3 N KILGARIFF	•	•	1	1	1	1	1	1
4 DA FENNELLY	0	0	•	0	1	1	1	1
5 GR NIXON	0	0	1	•	½	1	1	1
6 KJ KEADY	0	0	•	•	1	1	1	1
7 GA LITTLE	½	0	0	½	0	•	1	1
8 H ROSS	•	•	•	•	•	•	•	•

Section C	1	2	3	4	5	6	7	8
1 A KILGARIFF	•	1	1	1	1	1	1	1
2 EE WRIGHT	0	•	0	•	0	0	0	0
3 CP BOTHAM	1	1	1	1	1	1	1	1
4 JD ACKERS	•	•	•	•	•	•	•	•
5 V DILVORTH	1	1	1	•	1	1	1	1
6 RG WALKER	1	1	1	•	0	•	1	1
7 GE WALLVORK	1	1	1	•	0	•	1	1
8 P CASSAR	1	1	½	•	0	0	•	1

Section D	1	2	3	4	5	6	7	8
1 J TIMPERLEY	•	½	1	1	1	1	1	1
2 RWM BAXTER	½	•	1	1	0	1	1	1
3 D NEIL	0	•	1	1	1	½	1	1
4 GE WALLVORK	0	0	•	0	0	0	0	0
5 P WILDIG	0	0	0	•	0	0	0	0
6 GD PYRICH	0	0	1	1	1	•	1	1
7 D HARVEY	0	0	½	1	1	•	1	1
8 C TRINDER	0	0	0	0	0	0	•	0

2nd SCOTTISH OPEN TOURNAMENT

(Controller - Douglas Livie)

Section 1	1	2	3	4	5	6	7	Pts	Section 2	1	2	3	4	5	6	7	Pts	
1 CJ LENNOX	•	•	•	½	1	1	1	1	1	CF BOYLE	•	•	•	•	•	•	•	1
2 PB McADAM	•	•	•	•	•	•	•	w/o	2 DV GIBBS	•	•	•	•	•	•	•	w/o	
3 C McKAY	•	•	•	1	1	1	½	1	3 AWI CAMPBELL	0	•	•	0	½	0	0	1	
4 CF BOYLE	•	•	•	•	•	•	•	1	4 MA SUYSTUN	•	•	•	•	½	0	0	1	
5 GD PYRICH	½	•	•	1	•	•	•	1	5 A MUKHERJEE	•	•	•	•	•	•	•	1	
6 A MacQUEEN	0	•	0	0	•	•	½	1	6 B MARTIN	0	•	½	½	0	•	0	1	
7 F MacGILCHRIST	•	½	•	•	½	•	•	1	7 D SALTER	•	•	•	•	•	•	•	1	

Section 3	1	2	3	4	5	6	7	Pts	Section 4	1	2	3	4	5	6	7	Pts
1 RJ BURRIDGE	•	½	0	•	•	•	0	1	1	DR CUMMING	•	•	•	•	•	•	1
2 P McCONNELL	½	•	1	½	•	•	1	1	2 S MacGILCHRIST	•	•	•	•	•	½	1	
3 DR CUMMING	1	0	•	½	•	•	0	1	3 CR BEECHAM	1	•	•	•	•	•	1	
4 J COPLEY	½	½	•	1	•	•	1	1	4 AD KILGARIFF	1	•	•	•	•	½	1	
5 MT DYER	•	•	•	•	•	•	•	1	5 S DRUNSFIELD	•	•	•	•	•	•	1	
6 R Pells	•	•	•	•	•	•	•	1	6 J McLEAN	1	1	•	•	•	•	1	
7 AGE BIRD	1	0	1	•	•	•	•	1	7 A HIND	1	½	1	½	1	1	1	

Section 5	1	2	3	4	5	6	7	Pts	Section 6	1	2	3	4	5	6	7	8	Pts
1 SW BERKLEY	•	•	•	0	½	0	•	1	1	1	M DUNN	•	•	•	•	•	•	1
2 SR MITCHELL	•	•	•	•	0	•	•	1	2 EA BAILEY	•	•	•	•	•	•	•	1	
3 AJ ALLEN	•	•	•	•	•	•	•	w/o	3 DM LIVIE	•	•	•	•	•	•	1		
4 GE WALLVORK	1	•	•	•	½	•	•	1	4 BW GRANT	•	•	•	•	•	•	1		
5 GR SPROTT	½	1	•	•	•	0	•	1	5 IH MARSHALL	•	•	•	•	•	•	1		
6 S CROWDY	1	•	•	•	•	0	•	1	6 DR THOMSON	•	•	•	•	•	•	1		
7 J McLEAN	1	•	½	1	1	•	•	1	7 A MacMILLAN	•	•	•	•	•	•	1		
									8 R STOKES	•	•	•	•	•	•	1		

Section 7	1	2	3	4	5	6	7	8	Pts	Section 8	1	2	3	4	5	6	7	8	Pts
1 N DOWN	•	1	1	1	1	1	1	1	1	1	RJ BURRIDGE	•	•	•	•	•	½	1	
2 M THOMAS	0	•	•	•	0	1	½	•	1	2 GE WALLVORK	1	•	•	•	•	•	1		
3 RA GIULIAN	•	•	•	1	0	1	1	•	1	3 M MITCHELL	•	•	•	•	•	•	1		
4 G REID	0	0	•	0	0	0	0	•	1	4 DJ FINNIE	1	•	•	•	•	•	1		
5 T THOMSON	•	•	•	•	•	•	•	•	1	5 A CONDY	•	•	•	•	•	•	1		
6 S GOVLAND	0	0	•	•	•	•	•	•	1	6 I MACKINTOSH	1	•	•	•	•	•	1		
7 W HARPER	1	0	1	•	•	•	•	•	1	7 D HARVEY	½	•	•	•	•	•	1		
8 A MacQUEEN	½	1	0	1	•	•	•	•	1	8 A ARMSTRONG	0	0	0	•	½	0	•		

Section 9	1	2	3	4	5	6	7	8	Pts
1 DV GIBBS	●	-	-	-	-	-	-	-	1 1/2
2 M McBETH	-	●	1					1/2	
3 J WATSON	-	○	●	1	1/2	○	1/2	○	2
4 M PEARCE	-	-	○	●					
5 G LYBURN	-		1/2		●	1/2	○		
6 A MacMILLEN	-		1	1/2	●		1		
7 K GORDON	-		1/2	1		●	1		
8 S GOWLAND	-	1/2	1		○	○	●		

Top two players from each section qualify for semi-finals.

1st prize £100.50
2nd Prize £ 60.30
3rd Prize £ 40.20
4th Prize £ 20.10

All section winners receive 2 years' free magazine subscription.

ICCF INDIVIDUAL TOURNAMENTS (by Alan Borwell)

Members of the Scottish Correspondence Chess Association are eligible to compete in ICCF promotion tournaments, which are structured to encourage participation by C.C. players of all standards. You can choose between World or European-only sections ranging upwards from third class, second class to first class. Higher Class and Master Class events require evidence of C.C. playing strength with entries.

Tournaments are organised in 7 or 15 player sections, except World III Class which is 7-player only. They begin as soon (in theory) as entries have been received from seven different countries. Sometimes, in practice, there are two players from the same country, particularly from USSR or DDR. After you have selected a Class, you need to win a Section to be promoted and to score more than one-third of the points to avoid relegation!

The entry fee of £3.50 (for 7-player groups) or £4.50 (for 15-player groups) should be made payable to BPCF and sent to Mr. Michael Anderson, 3 Winterfield Gardens, Duns, Berwickshire, TD11 3EZ.

CENTENARY CUP FINAL (by Philip Giulian)

The close finishes in the semi-finals seem to suggest a wide open Final and this is exactly as it turned out to be, with only three points separating first from last. In Section 2 of the semi-finals, Mark Thomas just edged Ernie Wood out of first place, but this time the honours were shared.

In the following game Ernie employs a line of the Sicilian which is not supposed to yield any advantage for White.

White: E. Wood
Black: D. Neil

Sicilian Defence B22

1	e4	c5
2	c3	f6
3	e5	d5
4	d4	cxd4
5	f3	nc6
6	Bc4	nb6
7	Bb3	d5

Taking the pawn with 7 ... dxc3 8 Nxc3 gives White a lot of pressure.

8	exd6	Qxd6
---	------	------

9	0-0	Be6
---	-----	-----

Now 9 ... dxc3 is even worse than last move because of 10 Nxc3 Qxd1 11 Rxd1 a6 12 Be3 Nd7 13 Nd5 with big advantage to White.

10	Bxe6	Qxe6
11	Nxd4	Nxd4
12	Qxd4	Rd8
13	Qh4	

None of the alternatives Qe3, Qf4 or Qb4 are supposed to yield White an advantage.

13	Qe2
14	Be3!?	Qxb2??

Too greedy. Better is 14 ... e6! 15 Nd2 Be7 16 Qg3 0-0 17 Rfe1 Qd3 18 Bxb6 Qxg3 19 hxg3 Rxd2 with equality.

15	Nd2	Rxd2?!
----	-----	--------

Perhaps better is 15 ... Qb5 16 Rab1 Qc6 17 Bxb6 axb6 with slight advantage to White.

16	Rab1	Qc2
17	Bxd2	Qxd2
18	Rfd1	Qxa2
19	Qe4	f6
20	Qxb7	Kf7

21 Ra1

Believe it or not this is all "theory" given as unclear, but I feel White is clearly better, if not winning.

21 Qc2
22 Qxa7 Nc4
23 Qd4

Black has two pieces for the rook but his kingside pieces are taking no part in the game and his knight is being driven to an equally bad position.

23 Ne5
24 f4 Ng4
25 h3 Nh6
26 Qc4+ e6
27 Rd7+ Kg6
28 g4 Ba3

Now of course Rxa3?? is met by Qc1+.

29 Qxe6

With the threat of 30 f5+ Kg5 31 Rxc7+, winning easily.

29 Bc5+
30 Kh1 Rb8
31 Rad1 Bf8

32 Rg1!

Threatening 33 f5+ Kg5 34 Qe3+ Kh4 35 Qg3+ Kg5 36 h4 mate.

Black resigned.



The other joint winner Mark Thomas reckons his best game was the following, with notes based on those by Mark.

White: M. Thomas

Black: J. Copley

French Defence, Tarrasch C05

1 e4 e6
2 d4 d5
3 Nd2 Nf6
4 e5 Ne4

A good alternative now is 5 Bd3.

5 Nxe4 dxe4
6 Be3 a6!?

Possibly a new move in this position. More usual is 6 ... c5 7 dxc5 Nd7 8 Qg4 Nxc5 9 Bb5+ with slight advantage to White.

7 Qg4 Qd5

8 f3?!

Better is 8 c4 Qa5+ 9 Bd2 and now (a) 9 ... Qb6 10 Qxe4 Qxb2 11 Rb1 Qxa2 12 Nf3 with the idea of Bd3 and 0-0; (b) 9 ... Bb4 10 Rd1 Bxd2+ 11 Rxd2 Qxa2 12 Qxg7 Qa1+ 13 Ke2 Rf8 14 Nh3. In both cases, White is better.

8 exf3
9 Nxf3 Nd7
10 c4

Alternatively 10 Bd3 is also met by f5.

10 f5
11 cxd5 fxg4
12 Ng5 Bb4+
13 Kd1?!

Perhaps better is Bd2.

13 Nb6
14 Bd3

If (a) 14 dxe6 h6 or (b) 14 Nxe6 Bxe6, 15 dxe6 0-0-0 is unclear.

14 Nxd5
15 Ke2 h6
16 a3 hxg5
17 axb4 Nf4+
18 Bxf4 gxf4
19 h3! Bd7

20 hxg4 0-0-0??

Much better is 20 ... Ke7.

21 Rxb8 Rxb8
22 b5! g5
23 bxa6 bxa6
24 Bxa6+ Kd8
25 Rc1!

Preventing Bc6.

25 Rh4
26 Kf3 Ba4
27 b4 Bb3
28 Bb7 Rh7
29 Bc6 Rh8
30 Ra1 Ke7
31 Ra7 Rc8
32 b5 Kd8
33 Ke2 Bc4+

If 33 ... Bd5 34 Bxd5 exd5 35 Kd3 Rb8 36 Ra5 with the idea of Kc3, Kb4, Kc5 winning.

34 Kd2 Rb8
35 Ra5 Ke7
36 Kc3 Be2
37 Kb4 Bxg4
38 Ra7 Kd8
39 Kc5 Bf5

If 39 ... Be2 40 Bb7 g4 41 b6 cxb6+ 42 Kd6 f3 43 Bc6 f2 44 Re7 mating.

40 d5 exd5
41 Kxd5 Bd7
42 Bxd7 Kxd7

43 e6+ Kd8
44 Ke5 Resigns

Because of 44 ... Rxb5+
45 Kf6 Rb8 46 Kf7 Kc8 47 e7
Kd7 48 Ra3 threatening Rd3+.



Perhaps the best combination of the tournament occurred in a game not involving either of the joint winners. After 15 moves of the game A. Bird - D. Neil, the following position was reached with White to play.



The game continued with 16 Rxg7+ Kxg7 17 Qg4+ and Black resigned because if 17 ... Kf8 18 Bh6+ Ke8 19 Qg8+ mating or if 17 ... Kh8 18 Nxf7+ Qxf7 19 Be5+ mating.

"100 CLUB"

This is a club for members who really would like to help with the development of the Scottish Correspondence Chess Association. Currently there are almost 80 units issued but we need to increase this to 100 - please help us!

The subscription is only £1 per month per unit, with two prizes each month currently approx £22 and £15 respectively - members may apply for more than one unit if they so wish!

A monthly bankers order form can be obtained from our Treasurer, George Pyrich, 53DunnikierRoad, Kirkcaldy, Fife, KY1 2RL. If you return it to him before the 10th of the month, then you will be eligible to be in the draw for that month.

Recent winners:

	March
1st	D M Livie
2nd	P M Giulian
	April
1st	D M Livie
2nd	J S Murray
	May
1st	G D Pyrich
2nd	I Mackintosh
	June
1st	G W G Livie
2nd	C R Beecham
	July
1st	G W G Livie
2nd	A Swann
	August
1st	D M Livie
2nd	C R Beecham

2ND SCCA OPEN

(by Alan Hind)

I admit to thoroughly enjoying the SCCA's Open tournaments. This is principally due to the 3-day time control and the single game against each opponent. This, I find, gives me enough time to keep track of my games through work pressure, illness, holidays and the many family commitments which are ever present. My first attempt in the 1st SCCA Open ended +2 =3 -2, was a fair reflection on my standard of play and persuaded me to try again. I was fortunate then in being allocated to a section where all of the players were conscientious about playing out their games - there is nothing worse than a defaulter - and looked forward to a similar tournament.

On receipt of the pairings the task ahead looked rather daunting and realistically I was aiming at 50% again. My section had 3 players I knew were going to be opponents I would be likely to struggle against: Richard Beecham (CC 2300 and Scottish Master); John McLean (OTB 2050); Andy Kilgariff (Qualifier for the 1st Open Semi-Finals).

Also to be added to the equation were three players of unknown correspondence chess strength: Stuart Drunsfield; Siegrun Macgilchrist; David Cumming.

I prepared for the worse; I bought some chess books! I had a clear idea of what I wanted to play against each opponent and had bought a book of latest ideas on the Petroff for my game against John McLean - with the "simple" objective of fighting out a draw. So, having purchased the book, John's second move arrives - f4! Another trip to Chess Suppliers and home again equipped with Estrin & Glaskov, Vol. 1 (Kings Gambit Accepted). Also at this time my good friend CRB sent me a magazine article on the latest theory on one line of his opening. (Immediate reaction - you must be kidding, he'll never follow that book line!?)

Anyway, this proved to be the most interesting game I have played for some considerable time and the text follows:

White: J. McLean

Black: A. Hind

Kings Gambit Accepted

- Kleseritsky C39.

1 e4 e5
 2 f4 exf4
 3 Nf3 g5
 4 h4

The main positional objectives of the Kings Gambit are to open the f-file and obtain a strong pawn centre with d4 after exf4.

4 g4
 5 Ne5

This continuation is widely thought to be the strongest for White and is the critical test of Black's 3 ... g5.

5 Nf6

Berlin Defence - widely held to be Black's strongest reply.

6 d4

Better than Bc4 which is anti-thematic - another alternative is Nxc3 which has been played by Hebden, although this is dismissed by Estrin and Glaskov after 6 ... Nxe4!

6 d6

7 Nd3

The sacrifice Nxf7 is given as unsound (7 ... Kxf7 8 Bxf4 Bg7 9 Bc4+ d5 10 exd5 Re8+ (or 8 Bc4+ d5 9 exd5 Bd6 10 0-0 Nh5) with clear advantage to Black).

7 Nxe4
 8 Qe2 Qe7
 9 Bxf4 Nc6

The main line given in Estrin & Glaskov is 9 ... Bg7 but the continuations from this move look attractive. E & G only gives this as an illustrative game (Hajek-Bures, corres. 1962). Nc6 allows Black quick development on the queenside with castling long.

10 c3 Bf5
 11 Nd2 0-0-0
 12 0-0-0 Re8



Arriving at a critical position. White is still a pawn down and the question must be raised - is there sufficient compensation for it?

a) Hajek-Bures continued 13 g3? Nxc3! 14 Qxe7 Nxa2+ 15 Kbl Rxe7 16 Kxa2 Bxd3 17 Bxd3 Nb4+ 18 Kb3 Nxd3 and with Black three pawns ahead White resigned.

b) E & G suggest as an alternative 13 Re1 with sufficient compensation (and no analysis) but after 13 ... Qe6 if 14 Kbl Nxd2+ 15 Bxd2 Qxe2 and White loses two pieces. (15 Qxd2 is equally lost). I did wonder about other White 14th moves but came to no clear conclusion - Black still seems to retain the initiative.

c) Christiansen suggests 13 d5! but after 13 ... Nxc3 we have: (1) 14 Qxe7 Nxa2+ 15 Kbl Nxe7 16 Kxa2 (or 16 Bxd6 Nxd5 17 Bxf8 Rhxf8 18 Kxa2 Bxd3 19 Bxd3 Nb4+! 3 pawns up) 16 ... Nxd5! (attacking d3 knight and f4 bishop simultaneously) 17 g3 Bxd3 18 Bxd3 Nb4+ or 17 Bg3 Bxd3 18 Bxd3 Nb4+ or 17 Nb3 Bxd3 18 Bxd3 Nxf4; (2) 14 bxc3 Qxe2 15 Bxe2 Rxe2 16 Ne1 Ne7 with a 2-pawn advantage.

d) Other alternatives were 13 Nc4 Qd7 14 Ne3 h5 which is both positionally and materially better for Black, or 13 Qe3 Nxc3! per ECO2.

13 Nxe4

So much for all of the prior theory!

13 Qxe4
 14 Qxe4 Rxe4

If 14 ... Bxe4 15 Nf2 f5.

15 g3 Bg7

And here my theory runs out! My only source gave this as White being a pawn down without compensation (apparently the opinion of GM Larry Evans but I couldn't find the source game). Subsequent events brought this into question.

16 Bd2

White's strength would appear to be in control of the semi-open f-file. This move allows the establishment of a strong outpost for the knight on f4 with Bg2 and centralisation of the rooks.

16 Re7

Beginning to think that perhaps Bxe4 was better and fearing Nf4 followed by Bd3. Doesn't the knight on c6 look totally useless!

17 Nf4 Be4

Oh well - at least I'm prepared to admit my mistake and I hoped I still had time for this.

18 Bg2 f5
19 Rde1 Rhe8

Playing h5 looks to be weakening Black's position and though nominally a pawn ahead Black is effectively playing without a piece (the knight on c6).

20 Re2 Bh6!?

I thought this speculative at the time but I cannot see any other freeing move. If Black plays other moves then after large-scale exchanges White's knight penetrates the Black position. Played to prevent doubling of rooks because after 21 Rhe1 Bxf4 and if 22 Bxf4 (or 22 gxf4) Bxg2 and White loses a piece or 22 Bxe4 Bxd2+ also loses a piece.

21 Bxe4 Rxe4

22 Rxe4 Rxe4

And remember what I was saying about wholesale exchanges favouring White's more active position!

23 Nd5??



This was a move I had greatly feared, having seen it coming from afar. At first glance the position simplifies and the White knight and rook kill the Black kingside.

23 Bxd2+
24 Kxd2 Nxd4!

Should I really give myself an exclamation mark? After all my evil thoughts about what a millstone the knight had become!

25 Resigns

TOWN TEAMS TOURNAMENT REPORT

(by Douglas Bryson)

The GLASGOW team has won the IIIrd Polish Team Tournament for Cultural European Towns (May 1986-December 1989).

An excellent team performance with ½-IM scores recorded by boards 2 and 3.

		1	2	3	4	5	6	7	8	9	10	11	Pts	%	
1	Glasgow	GBS	2½	3	2½	2½	2½	1	3	3	3½	4	27½	68,75	
2	s-Hertogenbosch	NL	1½		2½	3	3	2	2½	3	2½	3	2½	25½	63,75
3	Budapest	H	1	1½		1½	1½	3	2	3	3	2	3½	22	55,00
4	Prague	CS	1½	1	2½		3½	2½	2	2	1½	3	2	21½	53,75
5	Warsaw	PL	1½	1	2½	½		2	2½	2	3	2½	3	20½	51,25
6	Lund	S	1½	2	1	1½	2		2	1½	2½	3	2	19	47,5
7	Arhus	DK	3	1½	2	2	1½	1		1½	1½	2½	2½	19	47,5
8	Hamburg	BRD	1	1	1	2	2	2½	2½		1½	2½	2	18	45,00
9	Woronez	SU	1	1½	1	2½	1	1½	2½	2½		2	2½	18	45,00
10	Poznan	PL	½	1	2	1	1½	1	1½	1½	2		2½	14½	36,25
11	Gdansk	PL	0	1½	½	2	1	2	1½	2	1½	1½		13½	33,75

Individual Board Results:

- Bd 1; Douglas Bryson 7½/10, Best score Bd 1 (IM title score 7,5 norm 6,5) i)
- Bd 2; Ken McAlpine 7½/10, Best score Bd 2 (IM norm 7),
- Bd 3; Andrew Muir 7½/10, 2nd best Bd 3 (IM norm 7,5)
- Bd 4; Philip Giulian 5/10, 4th best Bd 4 (IM norm 7,5)

The omens were "good" for Glasgow when the following game finished after a couple of months!?

White: D. Bryson
Black: GM N.G. Kopylov
(Woronez USSR)

Scotch Opening C45

- 1 e4 e5
 - 2 Nf3 Nc6
 - 3 d4 exd4
 - 4 Nxd4 Nf6
 - 5 Nxc6 bxc6
 - 6 Qd4 d5
 - 7 Nc3 Be7
 - 8 Bb5?? cxb5
- White resigns.



Recently I received a card from Dr. Josef Zoltai (Budapest, Hungary) congratulating the Glasgow team on their victory, together with the opinion that "our game remains memorable to me". An immense effort was required to keep Black under pressure and this ranks as one of my favourite postal games.

White: D. Bryson
Black: J. Zoltai (Budapest)

Sicilian Najdorf B96

1	e4	c5
2	Nf3	d6
3	d4	cxd4
4	Nxd4	Nf6
5	Nc3	a6
6	Bg5	e6
7	f4	b5?!

The Polugayevsky Variation.

8	e5	dx e5
9	fx e5	Qc7
10	Qe2	Nfd7
11	0-0-0	Bb7
12	Qg4	Qxe4
13	Be2!	

The sacrifice 13 Bxb5 axb5 14 Ncxb5 might win against an unwary opponent 14 ... h5?? 15 Nc7+ Qxc7 16 Nxe6 Qe5 17 Nc7+ Qxc7 18 Qe2+ Ne5 19 Qxe5+ but Black can play 14 ... f5!

13	Bc5
14	Nf3	h5
15	Qh4	Be3+
16	Kb1	

In 1985 I had prepared the novelty 14 ... Be3+ 15 Kb1 h5 16 Qh4, which transposes to the game. I did not believe GM Stean's assessment of 16 Nxe5 to be good for White.

16	Bxf3
17	Bxe3	Bxe2
18	Bd4	Bxd1

The position after 18 Bd4 was reached in Bryson-Gallacher, Nottingham 1987, when Black tried 18 ... Qf5.

19	Bxe5	Bxc2+
20	Kxc2	Nxe5

I think White must be winning here but a few moves later the position is not convincing.

21	Qg5	N8c6
22	Ne4	Nd4+
23	Kb1	Nf5
24	Rd1	Ng6
25	Nd6+	Nxd6
26	Rxd6	0-0
27	Qxh5	Rfd8
28	Qf3	Rxd6
29	Qxa8+	Kh7
30	Qb8	Rc6
31	h4	f6
32	g4	Ne5
33	g5	Kg6

34 Qe8+

I wrote down and almost posted 34 gxf6 with the idea gxf6 in reply will give White a passed h-pawn. I assumed 34 ... Kxf6 was impossible because of 35 Qd8+ Kf7 36 Qd4 and if N moves Qd7+ wins rook - but the defence is simple 36 ... Ng6 37 Qd7+ Ne7. After the move played 34 Qe8+ Kf5 35 Qf8 White threatens gxf6 and forced recapture with the pawn rather than king.

34	Kf5
35	Qf8	Nf3
36	a3	a5
37	Qxg7	fxg5
38	h5	Nd2+
39	Ka2	b4
40	axb4	axb4
41	Qg6+	Kf4
42	b3	Ne4
43	Kb2	Ke3
44	h6	Kd3
45	Kb1	Rc8
46	Qh7!	

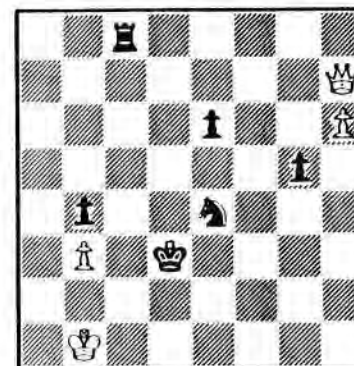
Good move and much better than my first thought of the obvious pawn shunt 46 h7 when Black gets a strong attack with ... Rf8.

46	Rf8
47	Qd7+	Ke3
48	Qa7+	Kd3
49	Qa6+	Kd2
50	h7	Nc3+
51	Kb2	Nd1+
52	Ka1	Rh8
53	Qb7	Nc3
54	Qg2+	Kc1?
55	Qxg5+	Resigns

55 ... Kc2 56 Qg8 wins the rook. Black should have played 54 ... Kd1 when White answers 55 Kb2! to meet Rxb7 with Qc2+ fork.



On board 2, Ken McAlpine concentrated exclusively on his ten Town Teams games and was rewarded with an unbeaten 7½/10 and a final norm for the IM title. During the tournament, the team passed round a scorebook for updating with moves, annotations and assessments. Ken provided in-depth annotations, one of which has already appeared in SCCA No. 27.



White: I. Torok (Budapest)
Black: K.B. McAlpine

Pirc Defence B07

1	e4	g6
2	d4	Bg7
3	Nc3	d6
4	f4	c6
5	Nf3	Bg4
6	Bc4	e6
7	a4	

"Losing" a pawn which I could not take on the last move since 6 Bc4 Bxf3 7 Qxf3 Bxd4 8 Ne2 Bg7 9 Qb3 with advantage. However, with the e-pawn affording a defence to this ploy, surely I can capture the d-pawn now in safety.

7	Bxf3
8	Qxf3	Bxd4
9	Ne2	Bg7
10	f5	

This looks dangerous but perhaps first 10 0-0 as I can hardly play Qb6+.

10	gxf5
----	-------	------

I would have preferred to play exf5 but was anxious about Bxf7+ Kxf7 and Qb3+.

11 exf5

He should have played 0-0 here with some K-side pressure though he is at present 2 pawns down - he should certainly get 1 back. After the text the queens are exchanged.

11	Qb4+
12	Qg3	Qxg3+
13	hxg3	d5
14	Ba2	e5

Clear edge to Black - the rest is not too difficult.

15	Bg5	Na6
16	c3	Nc5
17	0-0	Ne4
18	Bh4	Bh6
19	c4	Be3+
20	Kh1	d4
21	Rae1	Nf2+
22	Rxf2	Bxf2
23	Rf1	Be3
24	c5	Nh6
25	Bf6	Rg8
26	Bxe5	Rg5
27	Bf6	Rh5+
28	Bh4	Nxf5
29	Kh2	f6
30	Nf4	Bxf4
31	Rxf4	d3
32	Bb3	Nxb4

White resigns.

(Notes by Ken)



Andrew Muir is one of Scotland's most active OTB players but has also shown an aptitude for postal play. Six wins, 3 draws and 1 loss in the Town Teams secured his first IM norm, which has been followed up more recently by a final norm on board 1 of the European Team Championships and thereby the title.

White: R. Kujawaki (Warsaw)
Black: A. Muir

Sicilian Richter Rauzer B66

1	e4	c5
2	Nf3	Nc6
3	d4	cxd4
4	Nxd4	Nf6
5	Nc3	d6
6	Bg5	e6
7	Qd2	a6
8	0-0-0	h6

Beginners are rightly advised against premature rook pawn moves. White now has a potential line opening target of g4, g5.

9	Be3	Be7
10	f3	

f4 plans are more dangerous for Black, eg. Short - Llubojevic, 1988.

10	Nxd4
11	Bxd4	b5
12	h4	Qa5

13	Qf2	Rb8
14	Kb1	b4
15	Ne2	e5
16	Ba7	Rb7
17	Nc1	Be6
18	g4	

Varying from Van der Wiel-Tukmakov, 1984 Olympiad.

18	d5
19	Nb3	Qc7
20	Bc5	d4
21	Bxe7	Kxe7
22	Rg1	a5
23	g5	Nh5
24	gxh6	gxh6!

A difficult decision, 24 ... g6 is possible playing for the endgame when White has a weak pawn h4 but 24 ... Rxh6 makes it difficult for the rook to join the attack.

25	Nc1	a4
26	b3?!	

Stops Black's b3 threat but must be weakening.

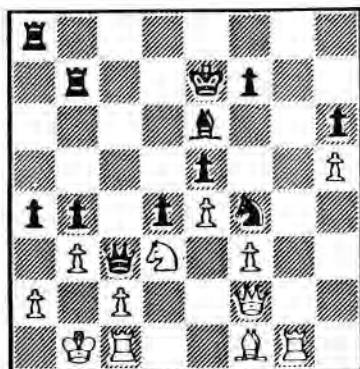
26	Ra8
27	Nd3	Qc3!

Only now that Rd3 is not possible.

28	Rc1	Nf4!
29	h5	

If 29 Nxe5 Ra5! 30 Nd3 axb3 31 cxb3 Nxd3 and Black wins a piece, or 29 Nxf4 exf4

30 Qe1 axb3 31 cxb3 Bxb3 winning.



29 Nxd3!!
30 cxd3

Winning the queen but Black has seen further.

30 axb3
31 Rxc3 bxc3
White resigns

There are no good moves, eg. 32 Bh3 Bxb3 33 Qh4+ Kd6 34 Qxh3 bxa2+ 35 Ka1 c2! wins.

(Notes by Andrew)



Phil Giulian was the only Glasgow player to have games still in progress at the adjudication date in December 1989.

Phil persuaded 1 opponent to resign and gained a win on adjudication in the other securing Glasgow's winning 2 point margin.

White: M. Banaszek (Gdansk)
Black: P.M. Giulian

English Opening A16

1 c4 Nf6
2 Nc3 d5
3 cxd5 Nxd5
4 g3 g6
5 Bg2 Nb6
6 d3 Bg7
7 Be3 O-O
8 Qc1 Nb8d7

Seriwan-Sokolov continued with 8 ... Re8 9 Bh6 Bh8 10 h4 Nc6 11 h5 with clear advantage to White.

9 Bh6 Nf6!?

My attempt at an improvement. Theory gives 9 ... c6 10 h4 Bxh6 11 Qxh6 Ne5 12 h5 Ng4 13 Qd2 with clear advantage to White in the game Timman-Jansa.

10 h4 Bxh6
11 Qxh6 Ng4
12 Qd2 h5!?

Now Black is fine. To break open the Black king's position will require the sacrifice of at least one pawn.

13 Nh3 c6
14 f3?! Nf6
15 g4?

With 15 Nf2 threatening g4, White at least could obtain some attack for the pawn.

15 hxc4
16 Nf2 g3!
17 Nfe4 Nh5

Black is a pawn up and the kingside is blocked again.

18 O-O-O Qc7
19 Qh6 Qe5
20 Rdg1 Nd5
21 Ng5?!

Without the queens White has no attacking prospects.

21 Qg7
22 Qxg7+ Kxg7
23 Bh3 Bxh3
24 Nxb3

Not 24 Rxb3 Nxc3 25 bxc3 Nf4 26 Rxb3 Nxe2+ winning the exchange.

24 f5
25 Nxd5 cxd5
26 e3 Rac8+
27 Kd2 Rc6
28 Rc1 Rfc8
29 Rxc6 Rxc6

30 f4

Black is a protected passed pawn up but it is going nowhere at present. Meanwhile the rest of the board is blocked and White threatens Ng5, Nf3 and Ne5, or Ng1, Ne2, Rg1 winning the pawn.

30 Kf6
31 d4

To prevent Black playing e5.

31 Ra6!
32 a3 Rb6
33 Kc2 Rc6+
34 Kd2

Not just simply wasting time. With the White pawn on a3 a weakness has been created on b3, which hopefully Black's rook can exploit.

34 a5

Threatening a4, Rb6 and Rb3 tying White down.

35 Ng1 Rb6
36 Kc2 Re6
37 Kd3

Alternatively 37 Kd2 g2 38 Rh2 Ng3 39 Rxb2 Nf1+ wins the e-pawn.

continued p44

NEW ICCF RATINGS - 1/7/90

The new ICCF list, which includes results to 31/12/89, contains 17 Scottish players who have fixed ratings, having completed more than 30 rateable games. A further 12 players are listed who have not yet achieved fixed ratings but have completed more than 20 games. The players marked with * had no results reported during 1989.

Fixed Ratings				Not Fixed Ratings				
	Title	Rating	Games		Title	Rating	Games	
			Incl				Incl	
1	BRYSON, DM	GM	2565	98	McALPINE, KB	(IM)*	2555	21
2	WICKENS, TS	IM	2440	120	JENKINS, DM		2405	26
3	KILGOUR, DA		2415	54	SHAW, AJ		2365	28
4=	GILLAM, SR		2395	36	WATSON, WP		2300*	29
	GIULIAN, PM		2395	159	MARKS, IA		2250	22
6	MARTIN, BJ		2360	32	SPROTT, GR		2220	27
7	NORRIS, AJ	WIM	2340	32	STEVENSON, JAB		2205	21
8	BORWELL, AP		2310	172	HAMMETT, MA		2175*	22
9	MORRISON, CJ	WIM	2305*	35	DAVIS, E		2150*	20
10	CRAIG, TJ		2290	37	LIVIE, GWG		2140	29
11	BEECHAM, CR		2280	79	GRANT, A		2130*	28
12	CAMPBELL, IS		2275	41	NYE, Dr VA		2105*	24
13	THOMPSON, ID		2240	40				
14	PYRICH, GD		2215	121	Ladies Fixed Rating			
15	HISLOP, AT		2170	53	1 HARTFORD, Mrs EA		1875	62
16	TANKEL, A		2125*	39				

* Ken McAlpine's IM title is due for ratification at the 1990 ICCF Presidium. Andrew Muir has also achieved two norms to qualify for an IM title, but he had not completed 20 rateable games at 31/12/89.

A complete copy of the new ICCF Rating List (25 pages) can be obtained by sending £2 and a large s.a.e. to Alan Borwell, 8 Wheatfield Avenue, Inchture, Perthshire, PH14 9RY.

SCCA MASTER & OTHER TITLES 1/7/90

(by Graham Wood)

Rules for the award of correspondence chess IM and GM titles are governed by the ICCF. Details of that system were given in SCCA Magazine No 29, December 1988. Details of the system for awarding the SCCA (National) Master title were given in SCCA Magazine No 31, August 1989.

Paul McGowan wrote to me and suggested that it would be a good idea to see, once a year, the titles and title norms SCCA players possess. I heartily agree with this proposal and it would seem sensible to do this each year at the same time as the new rating list is published.

The following table presents the current situation (after researching back through the records as far as the late 70's). As I pointed out in Magazine No 31, August 1989, page 29, however, keeping reliable and fully up-to-date records of ICCF events in which SCCA members achieve norms for M, IM or GM titles, is very hard if the players concerned do not personally inform the SCCA Grading Officer.

Finally, many congratulations to CR Beecham, G Morrison, and TS Wickens for being awarded (somewhat belatedly!) the SCCA National Master title.

Grandmaster: Bryson DM (1986)

International Master: Wickens TS (1988); McAlpine KB (1990); Muir AJ (1990)

National Master: McAlpine KB (1979); Bryson DM (1981); Giulian PM (1983); Norris AJ (1986); Morrison G (1987); Wickens TS (1988); Beecham CR (1988)

WIM: Morrison G (1987); Norris AJ (1987); Inglis Mrs M (1990)

Master title norms: Baxter RWM (1); Borwell AP (1); Dempster DH (1); Inglis Mrs M (1); Jenkins DM (1); Kilgour DA (1); McKerracher D (1); Morrison CJ (2); Muir AJ (1); Shaw AJ (1)

[Notes: 3 norms are required for a National Master title; an IM or GM title automatically gains the person a National Master title.]

SCCA RATING LIST

1/7/90

(by Graham Wood)

This list incorporates the results (notified to the Grading Officer) of games ending between 1/1/89 and 31/12/89 - the "rating period".

The calculations were made in accord with the workings of the ICCF system as given in the SCCA Magazine No 30 of May 1989.

A provisional rating (shown by *) is given to any player who has a total of less than 30 recorded results. A rating is not published in the list until a player has accumulated 8 or more results.

The ratings shown here are effective for all games beginning between 1/7/90 and 30/6/91.

There are 245 players in this list. I believe this is an all-time record number for the SCCA. Players who have no recorded results in the last three or more years are excluded from the list.

Incorporated Tournaments:

- SCCA Championship Final 1987-89 (now completed)
- SCCA Championship Final 1988-90
- SCCA Championship Candidates 1987-89 (now completed)
- SCCA Championship Candidates 1988-90
- SCCA Championship Premiers 1988-89
- SCCA Championship Majors 1988-89
- SCCA Quartets 132 & 133 (now completed), 134 to 140 (complete), Knight & Shield 1988-89, 141 & 142 (some games only)
- SCCA League 1988-89
- SCCA Handicap 1988-89
- SCCA v Australia (some games only)
- SCCA v USA (some games only)
- First Scottish Open Tournament: Semi-Finals (some games only)
- Scottish Centenary Cup: Final (some games only)

(Please note that, in addition to the above, results from the First Scottish Open Tournament: First Round (1987-89) and from the Scottish Centenary Cup: Semi-Finals (1987-88) have been incorporated retrospectively where appropriate. These results, therefore, may be responsible for unexpected changes in the rating of some players shown in the following list as compared with that of last year.)

I have had letters from several people concerning grading matters and master title norms. I should like to thank C R Beecham, N A Down, P McGowan, A J Muir, D Salter, J Seyfried, and R F Turner for their comments.

ADAMS S	1595 *	CAIRNEY JS	1725
AIRD I	1860	CAMERON W	1580 *
ALEXANDER M	1435 *	CAMPBELL AWI	1700 *
ANDERSON J	1965 *	CAMPBELL IS	2035
ANDERSON J (Dundee)	1645 *	CAPSEY SR	1425
ANDERSON KD	1590 *	CARLIN J	1695 *
ANDRES F	1225 *	CARROLL PJ	1365 *
ARGO GM	1725	CASSIDY J	1580 *
ARMSTRONG A	1600	CHALMERS BW	1690
		CHAPMAN BP	1720 *
BAILEY EA	1725 *	CLARK SL	1835
BARRETT T	1650 *	COFFIELD P	1840
BAXTER RWM	2380	COOPER M	1850 *
BEACON R	1850	COSGROVE D	1480 *
BEECHAM CR	2300	CRAIG TJ	2195
BEVERIDGE CTW	1425	CRICHTON D	1800
BIRD AGE	1810 *	CROASDALE ME.	1405 *
BIRD GH	2005	CROCKETT A	1855 *
BIRD MJ	1410 *		
BIRRELL R	1800 *	DEMPSTER DH	2170
BISLAND J	1785	DEVINE M	1265 *
BLENOWE JG	1660	DICKSON R	1765
BORLAND D	1395 *	DOCHERTY A	1270 *
BORWELL AP	2185	DOHERTY SD	1835 *
BOWN CJ	1635	DONKIN C	1645 *
BOYLE CF	1990	DOWN NA	2120 *
BRADY JJ	1465 *	DUNN MH	1495 *
BRADY S	1600 *	DYER MT	1870
BRYSON DM	2610		
BURNS J	1305 *	EADIE J	1475 *
BURRIDGE RJ	1730		

FALCONER JN	1680	INGLIS RA	2045 *
FENNELLY DA	1840 *	INNES RM	1825
FERRY P	1605		
FISHER RT	1400 *	JACK JPE	1655
FRYER KM	1870 *	JACKSON PJ	1665
		JENKINS DM	2150
		JOHNSTON TG	1995
GANNON M	1450 *		
GARVOCK JM	1300	KEENAN B	1710 *
GIBB DA	1750 *	KILGARIFF A	1865 *
GIBBS DV	1415 *	KILGOUR DA	2310
GILLAM SR	2180	KILPATRICK R	2055
GILLESPIE D	1960 *	KING MM	1715 *
GILLESPIE DL	1650	KYNOCH RJP	1645 *
GILLIES N	1180 *		
GIULIAN PM	2320	LEASK Mrs ME	1520 *
GIULIAN Mrs RA	1645 *	LIVIE DM	1885
GOLIGHTLY I	1320 *	LIVIE GWG	1995
GOODWIN B	1505 *	LLOYD G	1610 *
GORDON K	1795	LOUGHRAN R	1325 *
GOWLAND S	1790 *	LUMSDEN JPL	1640
GRANT AG	1800		
GRANT BV	1550	McADAM D	1265 *
GRANT PB	1545 *	McALPINE KB	2565
GRANT WM	1735 *	MacARTHUR JM	1825
GRAYSON MC	1750 *	McBETH MJ	1990 *
GREEN V	1285 *	McCARTAN J	1585 *
		McCLELLAND K	1075 *
HALL F	1410	McEWAN NR	1725 *
HALLIWELL Mrs T	1975 *	McGHEE Mrs M	1770 *
HAMILTON G	1520	McGHEE ME	1710
HAMMETT MA	2000 *	McGLINCHEY W	1475
HANLEY M	1165	McGOWAN A	2145
HARPER V	1450 *	McGOWAN P	2095
HARTFORD Mrs EA	1695	MacGREGOR CA	1315
HARVEY D	1795	McINTOSH A	1255 *
HARVEY H	1115 *	McINTYRE JW	1775
HERRIES JM	1720	MacKAY ID	2060 *
HILL BR	1425 *	McKEAN H	1595 *
HILTON SH	1435	McKENZIE Miss F	1245 *
HIND A	1790 *	MacKENZIE K	1740 *
HISLOP AT	1965	McKENZIE LR	1710 *
HOGG AF	1960 *	McKERRACHER D	1760
HUTCHISON CM	1545 *	MACKIE WV	1620 *
HUTCHISON WJ	1520		

McKINLAY T	1500 *	O'DONNELL JG	1765
MACKINTOSH I	1735		
McLAY JW	1890	PARK F	1430 *
MacLEOD MJ	1905	PARSONS DG	1430
McLURE Miss A	1615 *	PEARCE MF	1610 *
McMENEMY J	1285	PELLS R	1380
McMENEMY Mrs S	1295	PENMAN AD	1620 *
McMILLAN W	1795 *	PETRIE A	1270 *
McMONIGLE Miss AL	1500 *	PROUDLER VA	1590
McMORRAN T	1605	PYRICH GD	1985
McNAB CA	1995 *		
MacNAB TJC	1710 *	QUINN D	1985
McROBERTS DG	1510		
McROBERTS J	1250 *	REEMAN IF	1980
McTAGGART J	1660	REID DR	1990
		REID G	1780 *
MANNION SR	2235	ROACH WS	1835
MARKS IA	1855	ROSS DI	1625 *
MARSHALL IH	1745	ROSS FR	1280 *
MARTIN BJ	2155	ROSS JM	1520
MARTIN S	1695 *	ROSS M	1960
MASON T	1735	ROUGH RE	1730
MAXWELL A	1700	RUSSELL T	1900
MAYO MA	1360 *	RYAN JMT	1720 *
MERRIFIELD J	1650		
MITCHELL IWS	1580	SADOWSKI ZE	1755
MITCHELL M	1875	SALTER D	1850 *
MITCHELL SR	1690 *	SAVAGE DJ	1740
MOIR PJ	1575 *	SEYFRIED J	2090
MONTGOMERY RS	1795 *	SEYFRIED K	1830
MOOHAN MJ	1895	SHANKLAND J	1725 *
MORRISON G	2360	SHAW AJ	2180
MORRISON T	1610	SWEDDON G	1475 *
MORTON GA	1980	SWEDDON I	1890
MUIR AJ	2155 *	SPROTT GR	2095
MUIR PS	1710 *	STALLARD J	1390
MURRAY JS	1760	STEPHENSON L	1625
		STEVENSON JAB	2020
NEIL D	1945	STEWART KWC	1935 *
NISBET A	1720 *	STOKES RW	1640 *
NOBLE JM	1945 *	SWANN A	1745
NORRIS AJ	2495	SWYSTUN MA	1975
NYE VA	1880		

TAIT T	1770 *
TANKEL A	1915
TAYLOR J	1250
THOMPSON E	1835 *
THOMPSON I	1790
THOMSON A	1570 *
THOMSON T	1820 *
THORNTON J	1220 *
TURNER RF	1630 *
WALKER JM	1475
WALLIS G	1610
WALLWORK GE	2040
WARD J	1510

WATSON J	1630
WATSON JP	1475 *
WAUGH PCH	1365 *
WEBSTER JJ	1400 *
WHITTAKER IP	1795
WICKENS TS	2200
WILSON A	1405
WILSON AR	1585 *
WILSON I	1380 *
WOOD G	1960
WRIGHT A	1855 *
YIANNI M	1805 *
YOUNG S	1610 *

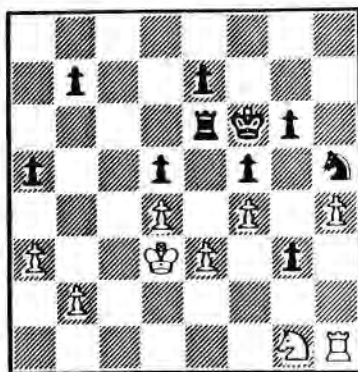
SCCA TOP TWENTY - 1/7/90

Recognised Ratings :-

BRYSON DM	2610
McALPINE KB	2565
NORRIS AJ	2495
BAXTER RWM	2380
MORRISON G	2360
GIULIAN PM	2320
KILGOUR DA	2310
BEECHAM CR	2300
MANNION SR	2235
WICKENS TS	2200
CRAIG TJ	2195
BORWELL AP	2185
GILLAM SR	2180
SHAW AJ	2180
DEMPSTER DH	2170
MARTIN BJ	2155
JENKINS DM	2150
McGOWAN A	2145
McGOWAN P	2095
SPROTT GR	2095



Banaszek v Giuliani
continued from p37



37 Nxf4+!!

White resigned because of
38 exf3 Re1 39 Kd2 g2
40 Rh2 Rxf1 winning easily.



BITS 'n' Pieces



by Ian Marks

Stephan Gerzadowicz is an American CC Master with several appearances in the US Absolute Championship to his name. He's a fully paid-up member of the Duncan Suttles Appreciation Society (that makes two of us) and therefore appreciates the finer things in life. Like the Great Man, Stephan has a highly individual (and successful) playing style, but most of all, he's one of the best chess friends I've ever made. May all your pawns become queens, Big Fella.

White: Ian Marks

Black: Stephan Gerzadowicz

CC Friendly 1988-89

Pirc B07

1 e4

MARKS: I suppose I should kick off with 1 g3, but I'll give the Guru the honour of fianchettoing first.

1 g6
2 d4 Bg7
3 Nc3 c6

MARKS: And if 4 f4 d5 5 e5 h5. To me, the Gurgendize is an awfully rigid proposition for White. I'd rather sit Black for that one. And besides, I like to have a VERY good reason for playing f2-f4 in the opening. Usually it just weakens the kingside and puts a pawn in the way of the Queen's Bishop.

4 Be2

MARKS: Not that he'll be intimidated, but this retains caveman options of a quick bash with h2-h4. Why do these kamikaze attacks never work when I'm White, yet seem overwhelming when I'm Black?

4 d6
5 Nf3

MARKS: Chicken.

5 Nd7
6 0-0 Nf6(!)

MARKS: Duncan Suttles' patent, "for players who like finishing in troubled waters" (Hort). But Dunc is (was!?) one of The Great Anglers.

Not all knights on the edge are bad. This one can hop back to f7 where it keeps an eye on the kingside dark squares and prevents White penetrating on d6 or d8. The shady side of the deal is that Black has to move his f-pawn, weakening the a2-g8 diagonal. Every silver lining has its cloud.

7 h3

MARKS: "There is no routine recipe for White" - Keene and Botterill.

7 0-0
8 Be3 f6

MARKS: Here it is, the thematic move; all part of the Great Plan to over-protect e5 and cover the dark squares. Providing Black keeps a weather eye on a2-g8 he should be OK....

9 Qd2 Nf7

GERZADOWICZ: A seminal Suttles position. Benko played 10 d5 in their 1964 New York game. Dunc responded with 10 ... f5, which got a "?" from Hort and the comment "10 ... c5 is essential".

Fool that I am, I listened, not understanding, and tried it vs Lou Petithory in the 1988 USCF Absolute Championship. After 10 ... c5 11 Nh4 Re8 12 f4 Nf8 13 Rad1 a6 14 a4 Bd7 15 e5! fxe5 16 f5 Bf6 17 fxc6 hxg6 18 Qe1, all of his pieces headed for g8. I lasted nine more miserable moves.

That was particularly shameful because The Man actually got a pretty good position vs Benko. So in a rematch with Petithory I followed The Way - 10 ... f5! Now that 1964 game went 11 exf5 gxf5 12 Nd4 Bxd4 13 Bxd4 cxd5 14 Nxd5 e5 15 Bc3.

Lou didn't like the looks of those Black pawns so he varied at once with 11 Nd4. We continued 11 ... Bxd4 12 Qxd4 Nf6 13 f3 Nh5 14 Bc4?! c5 15 Qd2 Ne5 16 Bd3? f4! -+ (17 Bf2 Bxh3). I'll never doubt Dunkie again.

10 Rad1

MARKS: TN! Theory (that is Benko-Suttles, 1964) goes 10 d5 f5 11 exf5 gx5f 12 Nd4, picking up the two Bishops via the threats to c6, e6 and f5.

Dunc went down in 35, after trying to win (yeah!), rather than settling for a draw. Hort suggests 10 d5 c5, when Black is rock-solid on the dark squares.

GERZADOWICZ: New? A silly question perhaps - as far as I know, nobody has had this position 'cept me and Dunc.

I reached for my b-pawn ... but didn't like the feel of 10 ... b5 11 d5 b4 12 dxc6!? bxc3 13 Qxc3.

10 e5

MARKS: Aha! (Premature?) aggression! (Aggression?) There are alternatives: 10 ... a6!?; 10 ... Qc7!? and the rather aesthetic 10 ... Kh8 to get His Highness of THAT diagonal. Dunc used to favour the King move. So do I. Sorry Stephan.

11 a4

GERZADOWICZ: Now I reached for my f-pawn, but 11 ... f5 12 dxe5 dxe5 13 Bc4 (this is why I had reached for my b-pawn) f4 14 Bc5 is better for White. So I played my next move with this line in mind.

11 Qe7

MARKS: Over-over-protection

12 a5

MARKS: 12 Rfe1 is OK, of course, but since Black isn't going to play ... exd4 (no?) and e5 is solidly defended, there isn't much future for the Rook on e1. In fact, it's pretty handily placed where it is: I may want to hit e5 again with a later f2-f4 (that would be a VERY good reason), when the Rook would be ready to pounce on the f-file. So let's get the a-pawn one square nearer touchdown. You never know.

12 f5



MARKS: Oops. Hadn't considered this AT ALL.

Should've remembered my Kotov and checked all the likely (and unlikely) replies. So, how come I overlooked it? Well, all of Stephan's play so far has been geared towards digging in on his strong-point at e5; I figured he would continue in similar vein. In other words, I trusted him.

"Trust ye not in a friend,"
MICAH 7:5

Now, suddenly, he's threatening to win my Queen's Bishop, so HE'll get the two Bishops - not what we had intended at all.

(Black's 12th reminds me of a totally irrelevant OTB game against Roddy McKay from the 1975 Renfrewshire Open which went 1 e4 b6 2 d4 Bb7 3 Bd3 g6 4 Nf3 Bg7 5 0-0 e6 6 c3 Ne7 7 Nbd2 d6 8 Re1 Nd7 9 Nf1 0-0 10 Ng3 h6 11 Be3 when, in typically unsteretyped fashion, the IM-to-be produced 11 ... f5! with initiative.)

Back at MarGerz, we left White perspiring slightly over ... f5. Stay calm; breathe deeply; let's analyse. Not that there is much to analyse....

13 dxe5 dxe5
14 exf5 gxf5
15 Bg5

GERZADOWICZ: And I grabbed the Bishop. It's usually a key white piece, well worth a Knight. But that beauty on f7 is a Suttles Knight! Not only does it hit g5, but cover d6 and block a Bishop check.

I think Black should play 15 ... Nf6!, developing, and preparing to capture on g5 in more favourable circumstances. And 16 Bc4 would be answered by 16 ... Be6, developing and preparing to neutralise the d-file.

15 Nxc5

MARKS: So the Bishop goes, but at least I get Black's sentinel Knight for it.

16 Nxc5

MARKS: 16 Qxc5 Qb4!?

GERZADOWICZ: Now he threatens 17 Bc4+ and 18 Ne6. I didn't like 16 ... Nf6 17 Qd6. And if 16 ... Nc5, 17 Bc4+ and 18 Qd6 seem to give White an edge.

Given that, I turned gratefully to the text, "stopping Bc4+".

16 b5?



GERZADOWICZ: *"There are few virtues that the Poles do not possess - and there are few mistakes they have ever avoided,"*
- Winston Churchill

MARKS: *"It is a good thing to make mistakes so long as you are found out quickly,"*
- J.M. Keynes

Hadn't considered this one either, but two seconds' in-depth analysis reveals that I can take on b5 and zap the Rook on a8. Let's see: takes, takes, check, King moves, takes, takes on g5...

What else could Black have played? 16 ... f4 17 Bc4+ Kh8 18 Ne6 isn't much fun. Does 16 ... Bh6 keep the game going? 16 ... Bh6 17 Bc4+ Kg7 18 Ne6+ Qxe6 19 Bxe6 Bxd2 20 Rxd2 looks a little better for White, but 17 Bc4+ Kh8 18 Nf7+ Rxf7 19 Qxh6 looks pretty unclear (i.e. I don't know what's happening).

Am I missing something? Hmm ... Sit on the old hands for 5 minutes ... Nope, don't see it. a7's hanging and the Black pieces are too undeveloped to help their queen. Here goes.

17 Nxb5 cxb5
18 Qd5+ Kh8
19 Qxa8 Qxc5
20 Qxa7 Nf6

MARKS: Anything else?

21 Qe7

MARKS: The pin is mightier than the sword.

21 f4

MARKS: Black goes into cheapo mode.

22 Rd8 Kg8

23 Rxc8

MARKS: Duch.

GERZADOWICZ: "There are few more impressive sights in the world than a Scotsman on the make,"

- J.N. Barrie

23 e4
24 Bg4 Qh6
25 Be6+ Resigns

MARKS: 25 ... Kh8 26 Rxf8+ Bxf8 27 Qf7 with the idea Rf1-d1-d8 is finis. Or left-handed players can queen the a-pawn.



READ SCOTTISH CHESS

Including
GAMES AND POSITIONS ANNOTATED BY
PAUL NOTHMAN I.M.
ENDGAME ARTICLES BY COLIN MCKAY I.M.
TEST YOUR CHESS BY RODDY MCKAY I.M.
FEATURE ARTICLES BY VARIOUS AUTHORS.

Q HOW MUCH DOES IT COST?
A £6.00 PER ANNUM
OR £1.15 PER COPY
Q HOW DO I SUBSCRIBE?
A SEND YOUR NAME, ADDRESS AND FEE
TO: CHESS SUPPLIERS (SCOTLAND) LTD

There must be hundreds of postal games played by Scottish players each year.

Why not share your experiences by annotating one for your magazine?

Please send to our Games Editor.

CLASSIC GAMES OF CORRESPONDENCE CHESS

by John Hawkes ©

In the 5th Soviet Championship, Borisenko and Estrin tied for first place, Maseev was third and the winner of this extraordinary game came in fourth.

White sacrifices a pawn but by ugly to-and-fro moves Black defends. The endgame resolves into a beautiful constellation of the four knights.

White: A. Lukin
Black: V. Kriukov

Best play for Black after 8 a4 is probably 8 ... b6 9 f4 Bb7 10 Bf3 Qc7, when White has the interesting plan of combining a k-side pawn advance with added support to his e-pawn and thereby restraining Black's counterplay by d6-d5, eg. 11 g4 Nc5 12 Qe2 Be7 13 Qg2!

5th USSR Corres Champs.
1960-63

Sicilian Defence B92

1 e4 c5
2 Nf3 d6
3 d4 cxd4
4 Nxd4 Nf6
5 Nc3 e6
6 Be2 a6
7 0-0 Nbd7
8 f4

8 b5
9 a3 Bb7
10 Bf3 Qc7
11 Be3?!

Even more restrictive on Black is the line 8 a4! Qc7 9 f4 Be7 10 Bf3. Kutianin-Foigel from the 13th Championship continued 10 ... h6? 11 Qe1 Nf8 12 e5! fxe5 13 fxe5 N6d7 14 Qf2 Nxe5 15 Bh5 g6 16 Bf4! and White won brilliantly.

Committing himself to an unclear sacrifice of the e-pawn. After 11 Kh1 h5!? 12 f5? e5 13 Nb3 Be7 14 Bg5 Rc8 15 Qd2 Nb6 16 Na5 Ba8 17 Rad1 Nbd7 18 Nb3 h4!, a surprising concept which worked out well in Miliutin-Simagin, 6th Champ.

11 : Nc5
12 e5 dxe5
13 fxe5 Qxe5

World Championship XV. Semi-final, Section I	1	2	3	4	5	6	7	8	9	10	11	12	13	14	15	16	17	P.	1990 RATING
1 P. Klotz (YU) IM	-	1	1	0	0	1	1	1	1/2	1/2	1/2	1	1	1	1	1/2	1	12	2480
2 W. D. Baturinski (SU)	0	-	1/2	1	1	1	1/2	0	1/2	1	1/2	1	1	1	1	1	1	12	2535
3 E. Frederiksen (DK)	0	1/2	-	0	1/2	1/2	1	1/2	1	1	1	1	1	1/2	1	1	1	11	-
4 L. W. Tschepurnoj (SU)	1	0	1	-	1/2	0	1/2	1	1/2	1/2	1	1	0	1	1/2	1	10 1/2	2470	
5 H. Djalsson (IS)	1	0	1/2	1/2	-	1/2	1/2	1	0	1/2	1	1	1	1	1	1	10 1/2	2485	
6 J. Spodny (CS)	0	0	1/2	1	1/2	-	1/2	1	1/2	1	1	1	0	1/2	1	1	10 1/2	2435	
7 C. W. Carlson (US)	0	1/2	0	1/2	1/2	1/2	-	0	1	1/2	1/2	1/2	0	1/2	1	1	8	2400	
8 L. Monostori (H) IM	0	1	1/2	0	1/2	0	1	-	0	0	1/2	1	1	0	1/2	1	7 1/2	2430	
9 A. P. Borwell (GB/S)	1/2	1/2	0	1/2	0	1/2	0	1	-	1/2	1/2	1/2	1	1	0	0	7	2470	
10 W. Aleksiejew (SU)	1/2	0	0	1/2	1	0	1/2	1	1/2	-	1/2	0	1	0	1/2	1/2	6 1/2	2475	
11 J. Barlow (ZW)	1/2	1/2	0	0	1/2	0	1/2	1/2	1/2	1/2	1/2	1/2	1	0	1/2	0	6 1/2	2310	
12 S. Kell (US)	0	0	0	0	1/2	0	1/2	0	1/2	1	0	-	1	1	1/2	1	6 1/2	2335	
13 S. A. Morozov (SU)	0	0	0	1	0	1	1	0	0	1/2	0	-	0	1	1	1/2	6	2345	
14 A. Pacini (BR) IM	0	0	1/2	0	0	1/2	1/2	1	0	1	1/2	0	1	-	1/2	1/2	6	2385	
15 E. H. Sprenger (NL)	0	0	1/2	0	0	0	0	1/2	1	1/2	1	1/2	0	1/2	-	1	6	2355	
16 K. J. Harrison (AUS)	1/2	0	0	1/2	0	0	0	1/2	1	1/2	1	0	0	1/2	0	-	5	2305	
17 F. Alabek (TR) IM	0	0	0	0	0	0	0	0	1/2	1	0	1/2	1/2	1	1/2	1/2	4 1/2	2305	
AVERAGE RATING																			2410

14 Bf4 Bxf3
15 Rxf3

Of course 15 Bxe5 Bxd1 simplifies too much. Black is at this point outnumbered in a count of active pieces and must play with absolute accuracy.

15 Qh5
16 Nc6



16 Ncd7!
17 Bd6

Otherwise ... Bc5+ comes and Black can 0-0.

17 Bxd6
18 Qxd6 Qc5+
19 Qxc5 Nxc5
20 a4

And although matters are simplified, Black still has problems.

20 bxa4!

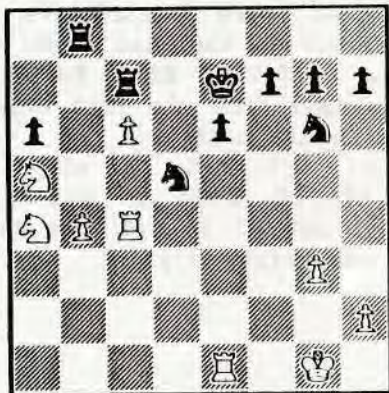
Forced, ugly and strong!

21 Nxa4 Ncd7

This time to stop Nb6. On 21 ... Nxa4 22 Rxa4, the a-pawn would surely fall. Now 22 Rfa3 can be answered by the counter-attacking 22 ... Rc8.

22 c4 Rc8
23 Na5 Ke7
24 b4 Ne5
25 Rc3 Nfd7
26 c5 Rc7
27 c6 Nf6
28 Re1 Ng6
29 g3 Nd5
30 Rc4 Rb8

Black at last completes his development and counter-attacks. The invulnerability of his a6 pawn over this last series of moves is remarkable.



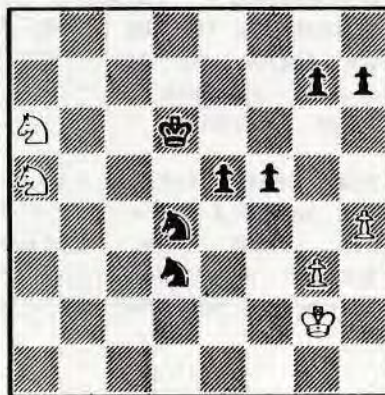
31 Nc5 Rb6
32 Rd4 Nxb4!
33 Rb1

No good was 33 Rd7+ Rxd7 34 Nxd7 Rb5 35 Rc1 because of ... Nxc6!. Another critical variation was 33 Rxb4 Rxb4 34 Nxa6 Ra4 35 Nxc7 Rxa5 and White is disconnected and his K+ and pawn vulnerable.

33 Nxc6!
34 Rxb6 Nxd4
35 Rb7

If 35 Nxa6 Rc2! threatening mate by ... Nf3 and Ng6-e5-d3 etc.

35 Rxb7
36 Naxb7 Ne5
37 Nxa6 Nd3
38 h4 e5
39 Kg2 f5
40 Na5 Kd6
0 1



© Copyright John E. Hawkes



Here is a nice miniature from David Cumming (Inverness)

White: D.R. Cumming
Black: D. Salter

Handicap Tourney 1990

Queens Gambit Declined D56

1 d4 Nf6
2 c4 e6
3 Nc3 d5
4 Nf3 Be7
5 Bg5 Nbd7
6 e3 0-0
7 h4 dxc4
8 Bxc4 c5
9 Qe2 h6
10 Ne5! Nb6
11 Bb3 Nbd5
12 0-0-0 Nxc3
13 bxc3 Qa5
14 Kc2 Nfd5
15 Rd3 Ndf6?
16 e4 cxd4
17 cxd4 Qc7+
18 Kb1 Nh7
19 Rg3 Kh8
20 Bxh6! gxh6
21 Rc1 Qd8
22 Qg4 Bf6?
23 Qg8+ Rxc3
24 Nxf7+ mate



Please send games (preferably annotated) to Games Editor:

Douglas M. Bryson,
38 Duncryne Avenue,
Mount Vernon,
Glasgow G32 0RQ.



GAMES SECTION

Selected by Douglas Bryson

38 Duncryne Avenue,
Mount Vernon,
Glasgow G32 0RQ.

Please send games
(preferably
annotated) to
Games Editor

Trouble remembering your card PIN number at the hole-in-the-wall cash dispenser? Some of the networks, Abbey National for example, permit you to change your number to a more easily remembered 4-digit code. Stalwarts of international postal play will realise immediately the scope this gives to change to a never forgotten number. 5254 is best by test, but Sicilian fans will want 3735, 5756 is French with 4745 for those of a more Nordic bent.

The problem of notation in general comes up with many of the contributions to this column. For 26 issues, standard short form algebraic has been used in the SCCA Magazine.

However, many people still employ their own brand regardless of FIDE statute and advice. Captures should be indicated by "x" - it is much easier to play through a game in your head if you know that Nxc3 takes something rather than Nc3. Similarly pawn captures should be given as cxd4, not cd4, not cxd, not cd; but cxd4. Non-standard notation means I have to spend time translating rather than commenting on the games *[and the Editor and his wife have similar problems at the next stage! - Editor]*

Tom Craig follows up his win in SCCA 33 with a sharp win from the Scotland-Ireland match in the European Team Championship.

White: L. Brady (Ireland)
Black: T.J. Craig (Scotland)

Kings Indian E92

1 d4 Nf6
2 c4 g6
3 Nf3 Bg7

The King's Indian is rather a volatile opening more suited to OTB chess. There seems to be a never-ending stream of White improvements in obscure as well as main lines. In the last NATT, I lost 2 games due to improvements in the Saemisch wiping out the analysis available to me. It is one of my sources of frustration with correspondence chess that opponents can achieve won positions without making any original moves of their own invention.

4 Nc3 0-0
5 e4 d6
6 h3 e5
7 d5

"Under the mask of modest development one of the most astute systems against the King's Indian Defence is hidden" - Kasparov.

7 Na6

7 ... Nh5 8 Nh2! Qe8 9 Be2
Nf4 10 Bf3 f5 11 g3!

8 Bg5

8 Be3 Nh5! 9 Nh2 Qe8 10 Be2
Nf4 11 Bf3 f5 12 h4 Qe7
13 g3 Nb4! - Kavalek v
Kasparov, Bogojno 1982.

8 Qe8
9 g4 Nd7
10 Rg1 Kh8

10 ... f5?! 11 gxf5 gxf5
12 Bh6.

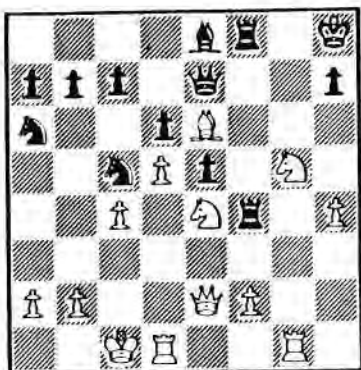
11 Qd2 Ndc5
12 0-0-0 Bd7

12 ... f5 13 gxf5 gxf5
14 Bh6 Bxh6 15 Qxh6 Qe7
16 Nh4!

13 h4

13 Bh6 may be a better
choice.

13 f5
14 gxf5 gxf5
15 Bh6 Bxh6
16 Qxh6 Qe7
17 Ng5 Rf6
18 Qh5 Rf8
19 Bh3 Be8
20 Qe2 fxe4
21 Ncxe4 Rf4
22 Be6?



22 f3 Rxf3 23 Rg3 Bg6
24 Rdg1 Nxe4 25 fxe4 Nc5
and the "burden of proof",
lies with White. If 22 h5
Rh4!

22 Nxe4

Most of my 9 days "thinking
time" was preoccupied with
22 ... h6!? 23 Rh1! hxg5
24 hxg5+ Kg7 25 Nf6.

23 Nxe4 Bg6

23 ... Qxh4 24 f3! Bg6
(...Rxf3?? 25 Qxf3) 25 Rh1
Qe7 26 Rdg1 or 23 ... Rxh4!?

24 f3

24 Rxg6 hxg6 25 h5 is sheer
desperation.

24 Rxh4

24 ... Rxf3 25 h5!

25 Rg3 Qg7!

26 b3 Qb6+

27 Kb2 Rh2

27 ... Qf5 28 Qg2!

28 Rg2 Rxc2

29 Qxc2 Qe3!

30 Ng5

30 Rf1 Qd4+

30 Nc5

White resigned realising
that he was about to lose at
least the exchange because
of the Nd3 threat.



Mike Macleod from Stornoway
mentions a conversation we
had at the Copthorne Open in
Glasgow in February.
Discussing the merits of
publishing one's games, I
suggested the problem of
giving away opening secrets
while Mike said, "No, it
shows how little you
understand about chess." He
writes that he meant, "When
people read my annotations,
they get to see how little I
understand about chess."

No such problems here when
Black pounces on White's
22nd move error.

Australia-Scotland Friendly
1988-89

White: M. Bruere

Black: M.J. Macleod

Two Knights Defence C55

1	e4	e5
2	Nf3	Nc6
3	Bc4	Nf6
4	d4	exd4
5	e5	d5
6	Bb5	Ne4
7	Nxd4	Bd7
8	Bxc6	bxc6
9	O-O	Bc5
10	f3	Ng5
11	Be3	O-O
12	f4	Ne4
13	Nd2	f6
14	Nxe4	dxn4
15	Qe2	Bg4
16	Qf2	Qe8
17	Nb3	Bb6
18	c4	Bxe3
19	Qxe3	Qg6
20	Rae1	fxe5
21	fxe5	

This long theoretical line,
and possible divergences
from it, is discussed at
length in Estrin "The Two
Knights Defence, Batsford
1983. p44-56.

With 21 fxe5 White diverged
from the game given there,
(Bredewout v Karaklajic,
Beverwijk 1967), which
continued 21 Qxe4 exf4.

21 Rxfl+

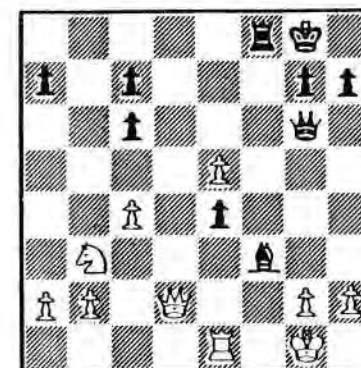
22 Kxf1

A curious choice, perhaps
with the idea of keeping up
the pressure on e4. Black
had no idea of how to
continue after 22 Rxf1,
since e4 seems much more
vulnerable than e5. But now
it is White who has to play
carefully.

22 Rf8+

23 Kg1 Bf3

24 Qd2



24 g3 weakens h1, g2 and
creates a target for ... h5 -
h4. But 24 Qf2 gives White
the advantage, as B moves do

not win anything, and if 24 ...e3 25 Qg3 wins the e-pawn, since the bishop must retreat. Qd2 looked natural but now Black has a forcing sequence.

24 e3!
 25 Rxe3 Bxg2
 26 Rg3 Bh3!
 27 Qe1

If 27 Qd1 Qc2 or 27 Qc1 Qh6. White must lose queen and two pawns for rook and bishop, and have an exposed king to boot.

27 Qe4
 28 Qd1 Rf1+
 29 Qxf1 Bxf1
 30 Kxf1 Qxc4+
 31 Kg1 Qe4
 32 Rc3 Qxe5
 0 1

If the rook takes on c6 then it is lost after ... Qe3+ followed by a check from a light square.



One of the best sellers on the Pergamon range of chess books has been John Watson's "Play the French". In Scottish OTB tournaments, the French seems to be at least as popular as the Sicilian.

David Cumming annotates his game against Robert Beacon who features on both sides of the argument in the Advance Variation.

Handicap 1989/90.

White: R. Beacon
 Black: D. Cumming

French Defence C02

1 e4 e6
 2 d4 d5
 3 e5 c5
 4 c3 Nc6
 5 Nf3 Qb6
 6 Be2 cxd4
 7 cxd4 Nge7
 8 Nc3 Nf5
 9 Na4 Bb4+
 10 Bd2 Qa5
 11 Bc3 Bd7
 12 a3 Bxc3+
 13 Nxc3 Qd8
 14 0-0 0-0
 15 g4 Nh4
 16 Nxb4 Qxb4
 17 f4 f5!
 18 g5 h6
 19 gxb6 Qxb6
 20 Bb5

Understandable. Trading off his king's bishop for my potentially useful queen's knight, leaving me with what is in so many games with the French, the problem queen's bishop, but I dis-

agreed with Robert's tactic here as a matter of personal taste and was later very pleased with the usefulness of that particular piece.

20 Kf7!

In order both to respond as I did to the capture of the knight by playing Rh8, gaining a tempo because of the immediate threat of Qxh2 mate, and to clear g8 for my queen's rook to bear down on Robert's king later.

21 Bxc6



21 Rh8!
 22 Rf2 Bxc6
 23 Rc1 Rag8!?

A risky but interesting idea, neglecting my queenside in order to gain a strong initiative on the kingside.

24 Nb5!!

An excellent move, and one which I had not spotted. If I had accepted the knight sacrifice with queens still on the board, Robert would very likely have pre-empted my kingside initiative by creating a strong queenside initiative of his own, refuted my plans and probably won the game. Accepting that I could not take the knight, on the next move the knight takes up its useful outpost on d6 with check, and could have been a bigger thorn in my flesh than it turned out to be, had my opponent not blundered positionally shortly thereafter.

24 g5
 25 Nd6+ Kf8
 26 Nc8??

Nc8?? was the losing move. My opponent should not have allowed me to play 26 ... gxf4+. Also the knight on c8 proved itself to be an obstruction on a square which should have been left open for one of his rooks.

26 gxf4+!

27 Kh1 f3!!

Great move. The pawn on f3 is of course immune to capture for the moment. If 28 Rxf3 then I respond Qxh2+ mate! If Qxf3 then I play Qxc1+, winning the rook. The pawn on f3 threatens to support a subsequent Rg2, so forcing my opponent's next move.

28 Qd2 Qxd2!

Good move! The queen trade eases pressure on the queen-side considerably and makes my kingside initiative even more potent.

29 Rxd2 Bb5!
30 R2c2? Bd3!

Another good move, refuting his last move, and if White had moved his rook off that second rank, then my following move would have been Rg2, with no way out of being mated for White. As it was, he had to move his rook back to f2 and his kingside became completely paralysed.

31 Rf2 Rh4

32 Nd6

An attempt to free his king-side. Had I not followed up with the correct move, the rook on f2 could have safely taken the f3 pawn, as White could now respond to Be4 (pinning the rook to the king) with Nx8!

32 Be2
33 Nxb7 Rxd4
34 Nd8!

Good move, although the writing was already on the wall for White. Threatening Nxe6+, had I responded with the seemingly natural Ke7??? protecting the pawn and attacking the knight simultaneously, White would of course have played Nc6+, forking king and rook, putting the knight on an excellent square following the capture of my rook on d4, bearing down on f3 and e2 and following an exchange of the knight for my bishop and pawn on those squares, turning the game around completely.

34 Rg6
35 Nc6 Re4
36 Nxa7 d4
37 Rc8+ Kg7
38 b4 Rxe5
39 Nc6 Re4

40 h3 d3
41 Rd8 Rh4!
42 Rh2 Rxh3!!
Resigns

Winning move, sacrificing the rook, thus ensuring promotion of at least one of my pawns.



Robert Beacon says, "The Advance is becoming popular once again at Grandmaster level. Personally I have had some nice wins with (OTB) the white pieces. For Black the move 5 ... Qc7 is largely ignored by theory. I consider it to be better than its reputation; it can transpose into 6 a3 c4 lines considered by John Watson in his book on the French.

Quartets Q143

White: Norman Talbot
Black: Robert Beacon

French Defence C02

1 e4 e6
2 d4 d5
3 e5 c5
4 c3 Nc6
5 Nf3 Qc7

If 5 ... f6 then Bb5 is good for White.

6 a3

6 Be2!?!; or 6 Bb5 Bd7 threatening 7 ... Nxe5; 6 Bd3 f6 7 Bf4 Qb6, Alekhine's idea; or 6 Bd3 cxd4 7 cxd4 Nb4!?

6 f6
7 Bb5

Bf4!? also a possibility.

7 Bd7
8 exf6


8 0-0 Nxe5 9 Nxe5 Bxb5
10 Qh5+ g6 11 Nxc6 Qf7
12 Re1 Qxg6 13 Rxe6+ Ne7
14 Qxd5 Bc6 wins.

8 Nxf6
9 0-0 Bd6
10 dxc5

The bishop reaches an even better square.

10 Bxc5
11 c4 0-0
12 Nc3

12 h3 was forced.



Please send games (preferably annotated) to Games Editor:

Douglas M. Bryson,
35 Duncryne Avenue,
Mount Vernon,
Glasgow G32 0RQ.



12 Ng4
13 b3

13 g3 was best. 13 Bxc6
Bxc6 14 h3 Rxf3 15 hxg4
Qf6!?

13 Nd4
14 hxg4 Nf3+
15 gxf3 Qg3+
16 Kh1 Qh3+
17 Kg1 Bxb5

17 ... Rf3?! 18 Qxf3 Qxf3
19 Bxd7.

18 Nxd5? Rxf3
19 Ne7+ Bxe7
Resigns



CHESS

Pergamon CHESS is a big, bright and colourful 32-page A4 magazine with top quality features written by masters worldwide, with regular articles on Opening Theory, Innovations, Endgames, Combinations, How Good is Your Chess, Computer Chess, Prize Competitions, etc.

Each issue costs £1.75 (annual subscription £17.50) and is available from newsagents, established chess suppliers or direct from Pergamon Chess, Railway Road, Sutton Coldfield, B73 6AZ, England.

ICCF PROMOTION TOURNAMENTS

Group WT/M/GT/269

Startlist:	ICCF Rating
1 J H Duke (AU)	-
2 M Bergmann (BRD)	-
3 L Geisendorf (DDR)	2020
4 A Mori (I)	-
5 M R Freeman (NZ)	2405
6 I S Loktev (SU)	2305
7 R Plaumann (BRD)	-
8 G Beisser (BRD)	2255
9 S R Assaturjan (SU)	2355
10 J Walther (DDR)	2160
11 H Chomicki (PL)	2195
12 N A Down (GBS)	-
13 H-E van Kempen (BRD)	-
14 A Bernad (E)	2095
15 S Matzke (BRD)	2090

INTERNATIONAL REPORT

(by Philip Giulian)

We are delighted that Glasgow has won the IIIrd European Town Teams Tournament, organised by Poland - a report on this outstanding success appears elsewhere in the Magazine.

Following closely on his norm in the Town Teams event, Andrew Muir has scored his second IM norm on top board in the European Team Championship and this will make him Scotland's third International Master. We are to have his title confirmed at the 1990 ICCF Meeting.

Scotland's international invitation tournament, to celebrate ten years of the SCCA Magazine, has started with the players as shown in the last issue of the magazine. The Australian nominee for Section B is Peter Wagg. We still need confirmation of the International Master norms but these seem certain to be 7½/14 in Section A and 9½/14 in Section B.

David Kilgour has started play as Scotland's nominee in the Horowitz Memorial International Title Tournament organised by the United States of America. This is a very strong event and David's grade is below the minimum requested, but I'm glad to say that he has been included in the startlist. Only Paul Spinath (Canada) is rated under 2400 and the strength of the tournament is such that only 50% is required for the IM title. The difference in grading between the highest and the lowest is less than 200 points and so it seems a wide open event. The prize fund is one thousand dollars.

The full startlist in grading order is: Joseph De Mauro (USA) 2540, Olavi Neuvonen (Finland) 2530, Peter Kindl (West Germany) 2525, Thomas Tronhjem (Denmark) 2500, Herman Skarke (West Germany) 2475, Erik Osbun (USA) 2455, Karl Dehmelt (USA) 2450, Alex Dunne (USA) 2435, Gary Kubach (USA) 2435, Askeil Karason (Iceland) 2430, Isay Goljak (USA) 2430, Jaako Juntunen (Finland) 2420, David Kilgour (Scotland) 2410, George Walker (Switzerland) 2405, Paul Spinath (Canada) 2360.

RESULTS:

European (Scotland 22½/39 - 57%)

Bd 1	A J Muir	1	v	Ireland
	A J Muir	½	v	Sweden
Bd 3	S R Gillam	0	v	Sweden
	S R Gillam	½	v	Bulgaria
Bd 4	D M Jenkins	½	v	Denmark
	D M Jenkins	0	v	Czechoslovakia
	D M Jenkins	0	v	Austria
Bd 6	T J Craig	½	v	Austria
	T J Craig	1	v	Ireland
Bd 7	D H Dempster	0	v	Denmark
Bd 9	A J Shaw	1	v	Ireland
Bd 12	G R Sprrott	½	v	Denmark
	G R Sprrott	½	v	Sweden
	G R Sprrott	1	v	Portugal

Scotland (7½) v Italy (22½)

Bd 1	S R Gillam	1	½
Bd 14	Z E Sadowski	0	½
Bd 19	J McMenemy	0	0

Scotland (10) v Ukraine (22)

Bd 3	S R Gillam	0	½
Bd 7	G W G Livie	0	0
Bd 15	G Wood	½	0
Bd 18	D J Savage	1	1
Bd 19	K D Anderson	0	0
Bd 20	K Gordon	0	0

Scotland (9) v Argentina (6)

Bd 18	J P E Jack	0	0
-------	------------	---	---

Scotland (9) v USA (27)

Bd 1	P M Giullian	0	0
Bd 2	G D Pyrich	½	0
Bd 3	A P Borwell	1	1
Bd 10	R J P Kynoch	0	0
Bd 11	M Macleod	1	½
Bd 16	A D Penman	0	
Bd 17	T Russell	1	0
Bd 23	I Sneddon	0	0

Scotland v British Rail

Bd 10	IWS Mitchell	1	1
-------	--------------	---	---

Scotland v Ireland

Bd 7	M Macleod	0	0
------	-----------	---	---

OLYMPIAD REPORT

(by Philip Giullian)

Hungary have moved strongly through to take over the lead from Czechoslovakia, largely due to the score in their individual match. At one stage, a couple of months ago, Hungary had slipped back to 60%. At the same time, Czechoslovakia have slipped to "only" 16½/25 (66%). Unfortunately, a number of Scotland's bad positions have begun to show through and our score now stands at 22/36 (61%). This still leaves us clearly third, ahead of Portugal 57% and Norway 53%. An encouraging sign for Scotland is that a couple of bad positions have clearly improved and no longer appear the certain losses that they did recently. In addition, Colin McNab has managed to draw his game with Hungary from a position where most of us had given up hope.

C McNab (Scotland)



K Honfi (Hungary)

In the above position, Colin had just played 44 ... Rf8, with the obvious threat of queening his pawn. Thinking this was all Colin was doing, his opponent carelessly played 45 a6 expecting 45 ... f1+ 46 Nxf1 Rxf1+ 47 Ka2 and the queenside pawns cannot be stopped. However, Colin surprised his opponent with 45 ... Nd2+! 46 Kc2 Ne4! 47 Rxc7+ whereupon the game was agreed drawn.

C C OLYMPIAD XI PRELIMINARIES

(Section 2)

1 CZECHOSLOVAKIA		1	2	3	4	5	6	7	8	9	10
1	A LANC MIN 2430		1	1/2	1		1/2	1	1	1/2	
2	J ANDROZ -			1/2	1/2	1	1		1/2	1	0
3	M VBINER IM 2435			1			1/2			1/2	0
4	R NACHALA 2380			1			1/2		1/2		
5	J KOLIN 2335					1/2	1	1/2	1	1/2	
6	P MISOVSKY 2480		1	1		1/2			1		

2 BELGIUM		1	2	3	4	5	6	7	8	9	10
1	A VAN OSNABL MIN 2530	0					1/2	0		1/2	
2	J ROOSE 2330			1/2	0		0	0	1/2	0	1/2
3	B VAN LEBUWEN 2140			1		1	1/2	1/2	1	1	0
4	D WYNS -			1		0			1/2		
5	V LBROY 2265					0	1/2	1	0	1/2	
6	H VBBN -	0				0	1	1/2	0	0	0

3 SINGAPORE		1	2	3	4	5	6	7	8	9	10
1	H F GLASER 2380	1/2					1/2	0	1/2	0	
2	A CHIA -	1/2	1/2				1/2	1/2	0	0	0
3	K-S TEO -	0	0				0	0	1/2	0	
4	C-V LEONG -	0	0		1/2	0	0	1	1/2	1/2	0
5	M-Y VONG -					0	1/2			0	
6	B TEO -	0					0	1	0		0

4 ARGENTINA		1	2	3	4	5	6	7	8	9	10
1	J S MORGADO GN 2475							1/2			1/2
2	B MARCUSSI IM 2470	1/2	1	1			0			0	
3	P BUJ IM 2445							0	1		
4	R A REDOLFI IM 2385			1/2				1			
5	A LAURECENA 2405						0		0		1/2
6	C G PAPIER IM 2315										

5 PORTUGAL		1	2	3	4	5	6	7	8	9	10
1	P SILVA MIN 2280	0					1/2	1/2	1/2	1/2	
2	R SILVA PEREIRA MIN -	0		1/2			1/2	1/2	1/2	1/2	0
3	H NETO MIN -		0	1				0		0	1
4	J D DE SOUSA -		1	1				1	1/2	1	
5	A OLIVEIRA MIN -	1/2	1	1			1	1/2	1/2	1/2	1/2
6	C QUARESMA -	1/2	1				0	1	1		0

6 FINLAND		1	2	3	4	5	6	7	8	9	10
1	T PERMAN MIN 2355		1/2	1/2		1/2				0	0
2	H SABEL 2395	0	1	1/2	1	1/2			1/2	0	0
3	K TANNI -	0	1/2	1				1/2	1/2	1	
4	S SJONAN 2420	1/2		1				1/2	0		
5	K KAUNONEN IM 2405	0	1/2	1/2	1	0			1/2	1/2	0
6	R VIKMAN IM 2405		0	1		1			0	0	1/2

7 BRAZIL		1	2	3	4	5	6	7	8	9	10
1	O FRAGA PORTILHO 2355	1/2	1	1	1/2	1/2				0	
2	S HONCH DE CRESCH -		1	1/2		1/2					
3	M SILOS BIAVA MIN 2440	1/2	1/2	1	1	1	1/2		1/2	0	1/2
4	A PACINI MIN 2360			0	0	0	1/2		1/2		
5	O ALCANTARA SOARES 2350	1/2	0			1/2			1/2	1/2	
6	P A QUEBRZ BRIO -		1/2	0		0					

8 NORWAY		1	2	3	4	5	6	7	8	9	10
1	T STRAND MIN 2370	1/2		1/2		1/2				1/2	
2	K V STRAND IM 2445		1/2	1		1/2	1/2			0	1/2
3	P LARSEN 2325		0	1/2	0		1/2	1/2		1/2	
4	P STIGAR -	1/2	1/2	1/2		1/2	1	1/2		1	1/2
5	O HJERTENES -	0	1		1	1/2	1/2	1/2		1/2	
6	O BRKKK -	0	1	1		0	1				0

9 SCOTLAND		1	2	3	4	5	6	7	8	9	10
1	D M BRYSON GN 2585	0	1/2	1		1/2	1		1/2		
2	C A MCNAB (PIE) IM(2435)	0	1	1	1	1/2	1		1		
3	A J MORRIS/R.P. BORNWELL	1/2	0	1		1	0	1	1/2		1/2
4	T S VICKERS MIN 2470			1/2		0			0		
5	P H GIULIAN 2370	1/2	1/2	1		1/2	1/2	1/2	1/2		1/2
6	A KILGOUR 2365		1				1				

10 HUNGARY		1	2	3	4	5	6	7	8	9	10
1	S BRILLA-BANFALVI GN 2545	1/2			1/2						
2	J FULDI IM 2450	1	1/2	1		1	1		1/2		
3	P FABRI 2550	1	1			0		1/2		1/2	
4	I MULLNER 2345			1					1/2		
5	T FLORIAN 2415				1/2	1/2	1			1/2	
6	I FODOR MIN 2195		1	1		1	1/2		1		

IV EUROPEAN TEAM CHAMPIONSHIP PRELIMINARIES

BOARD 1 - A J MUIR

	De	Bu	Sc	Po	Sw	CS	Sp	Ir	Au
Den Sorensen, B 2575	●		○		○				1/2
Bul Kostadinov, K 2445		●				○			
Sco Muir, A J (2225)F	1		●	1	1/2	1/2	1/2	1	1
Por Ferreira, A M A (2300)F			○	●					
Swe Carlsson, I 2455	1		1/2		●	1/2			
CS Bulla, Dr J 2435		1	1/2		1/2	●		1/2	
Spa Lanz Calavia, J M 2355 M			1/2			●			
Ire Ludgate, A T 2465			○		1/2		●		
Aus Fleischhanderl, F 2470	1/2		○						●

BOARD 2 - A P BORWELL

	De	Bu	Sc	Po	Sw	CS	Sp	Ir	Au
Den Christensen, B 2555	●		1/2	1/2	○			○	
Bul Metchkarov, V 2200		●							
Sco Borwell, A P 2280	1/2		●					1/2	
Por Costa, F V L S 2200	1/2			●	○			1/2	○
Swe Lundholm, Dr S G 2450 M	1			1	●				1/2
CS Krecmer, Ing M 2440						●			○
Spa Garriga Nualart, J 2570 M							●		
Ire Harding, T D 2270	1		1/2	1/2				●	1/2
Aus Teichmeister, Dr S 2395				1	1/2	1		1/2	●

BOARD 3 - S R GILLAM

	De	Bu	Sc	Po	Sw	CS	Sp	Ir	Au
Den Lassen, H J 2495	●				1/2		1	1	○
Bul Petrov, V (2270)F		●	1/2			1/2			1/2
Sco Gillam, S R 2395		1/2	●		○			1/2	
Por Quaresma, L M T 2200				●					1
Swe Gustafsson, G 2405	1/2		1		●				
CS Kolin, J 2340		1/2				●		1/2	
Spa Padros Simon, A 2340	○						●		
Ire Gibson, J F 2395	○		1/2			1/2		●	
Aus Aigmüller, Ing M 2360	1	1/2		○					●

BOARD 4 - D M JENKINS

	De	Bu	Sc	Po	Sw	CS	Sp	Ir	Au
Den Sorensen, T 2450	●		1/2		1/2	1		1	1/2
Bul Sergiew, S 2310		●		○					
Sco Jenkins, D M 2385	1/2		●		○			1	○
Por Castro, F A P S 2200		1		●					
Swe Enterfeldt, L 2385	1/2				●				1
CS Machala, Dr R 2395	○		1			●			1
Spa Paredes Prats, J 2370							●		
Ire Griffin, J 2200	○		○					●	
Aus Hipfl, V 2350	1/2		1		○	○			●

BOARD 5 - G D PYRICH

	De	Bu	Sc	Po	Sw	CS	Sp	Ir	Au
Den Jensen, IB V H 2440	●		1/2	1	1	1			1
Bul Kostakiev, D 2200		●							
Sco Pyrich, G D 2205	1/2		●	1/2	○				○
Por Cordiero, V L 2200	○		1/2	●					○
Swe Becker, J 2390	○		1		●				
CS Marecek, Ing M 2340	○					●	1		1/2
Spa Bonay Toscas, S 2375						○	●		1/2
Ire Montgomery, R 2345								●	
Aus Venger, Dr K 2200	○		1	1		1/2	1/2		●

BOARD 6 - T J CRAIG

	De	Bu	Sc	Po	Sw	CS	Sp	Ir	Au
Den Vefling, G 2430	●						1/2	1	1
Bul Parvanov, L 2300		●							
Sco Craig, T J 2290			●		1/2			1	1/2
Por Palhares, P M B 2200				●			1/2		
Swe Nilsson, J 2200			1/2		●				1
CS Novotny, Ing J 2415						●			1
Spa Ivanez Rico, F 2420	1/2			1/2			●		
Ire Brady, L E 2265	○		○					●	1/2
Aus Koller, H 2200	○		1/2		○	○		1/2	●

continued

BOARD 7 D H DEMPSTER De Bu Sc Po Sw CS Sp Ir Au

Den	Sogaard, O	2440	•	1/2	1	1			1/2	1	1/2	
Bul	Kossatschki, V	2270	1/2	•								
SCO	Dempster, D H	2135	o		•		o		o			
Por	Demetrio, A E R	2200	o			•						
Swe	Friberg, H	(2265)F			1		•					
CS	Rosenzweig, V	2365						•			o	
Spa	Montecatine Rios, R	2390	1/2		1				•			
Ire	Thomson, A	2200	o							•		
Aus	Strauss, Prof A	2200	1/2					1			•	

BOARD 8 - B J MARTIN De Bu Sc Po Sw CS Sp Ir Au

Den	Berggreen, A J	2400 M	•		1/2	1				1	1/2	
Bul	Minkov, I	2200		•								
SCO	Martin, B.J.	2290	1/2		•		1			1	1/2	
Por	Flores, J M S	2200	o			•						
Swe	Erlandsson, C-E	2310			o		•					
CS	Lizan, Ing L	2380						•				
Spa	Bernal Caamano, J	2200							•			
Ire	Killane, J	2200	o		o					•		
Aus	Steinwender, W	2200	1/2		1/2						•	

BOARD 9 - A J SHAW De Bu Sc Po Sw CS Sp Ir Au

Den	Nielsen, M	2395	•			1/2	o		1/2	1	o	
Bul	Atanasov, B P	2425		•								1/2
SCO	Shaw, A J	2200			•		1/2			1	1/2	
Por	Morais, V M	2200	1/2			•				1		
Swe	Rydholm, L	2215	1		1/2		•	1				
CS	Stodola, J	2200					o	•		1		
Spa	Casares Ripoll, F	2200	1/2						•	1		
Ire	Gallacher, B	2200	o		o	o		o	o	•	o	
Aus	Roth, P	2300	1		1/2					1	•	

BOARD 10 G W G LIVIE De Bu Sc Po Sw CS Sp Ir Au

Den	Petersen, S	2345	•		1/2	o	1		o		1/2	
Bul	Tschankov, T	2200		•	o							
SCO	Livie, G W G	2200	1/2	1	•					1	1/2	
Por	Costa, L M C M	2200	1			•		1/2				
Swe	Seger, G	2295	o				•				1	
CS	Hadraba, Ing V	2420				1/2		•				
Spa	Gude Fernandez, A	2420	1						•			
Ire	Humphrys, F J	2200			o					•		
Aus	Vodep, O	2280	1/2		1/2	o					•	

BOARD 11 - J SEYFRIED De Bu Sc Po Sw CS Sp Ir Au

Den	Kleiminger, P	2200	•				o				1/2	
Bul	Tenev, T	2200		•								
SCO	Seyfried, J	2200			•							
Por	Pinto, H M F B	2200				•						
Swe	All, V	2400	1				•				1/2	
CS	Necesany, Z	2320						•				
Spa	Gil Matilla, C	2200							•			
Ire	Shaw, J	2200								•		
Aus	Tarnowiecky, Dr H	2340	1/2						1/2		•	

BOARD 12 - G R SPROTT De Bu Sc Po Sw CS Sp Ir Au

Den	Danstrup, H	2535	•		1/2						1/2	
Bul	Mintchev, V	(2230)F		•		1					1/2	
SCO	Sprott, G R	2200	1/2		•	1				1/2	1	
Por	Fonseca, A V V	2200		o	o	•						1/2
Swe	Olsson, S	2200					•	1/2	1/2		1	
CS	Malac, M	2200					1/2	•				
Spa	Guillen Marco, J	2200			1/2		1/2	•			o	
Ire	Shouldice, A	2200			o					•	1/2	
Aus	Urban, Prof F	2290	1/2	1/2		1/2	o		1	1/2	•	

3rd NORTH ATLANTIC TEAM TOURNAMENT

Play begins on 1st September 1990 in this popular event, with 11 teams of 10 players. Team lists, with 1990 ratings, are:

CANADA		FRANCE		SCOTLAND		
1	DM MacLEOD	2490	JM MASUREL	(2200)	AJ MUIR	(2200)
2	Z SAROSY	2420	S VINOT	2555	CA MacNAB	(2200)
3	K WIDMANN	(2200)	J DE LAGONTRIE	2130	PM GIULIAN	2395
4	S BOYD	(2200)	A WALLYN	(2200)	DA KILGOUR	2415
5	J ARMSTRONG	2285	J L MAUREL	2195	TJ CRAIG	2290
6	M EDELSTEIN	2355	P DANZANVILLIERS	2280	GR SPROTT	2220
7	L NEUBAUER	2225	A NEGRE	(2200)	GD PYRICH	2215
8	J POMMER	(2200)	VM GOASDOUE	(2200)	GWG LIVIE	2140
9	J POULIOT	(2200)	D TROFFIGUER	2395	IS CAMPBELL	2275
10	H KING	(2200)	J DERUINEAU	(2200)	JAB STEVENSON	2205

SPAIN		USA		ENGLAND (holders)		
1	R CRUSI	2360	K DEHMELT	2460	MW WILLS	(2200)
2	F IVAREZ	2315	EE LIEBOWITZ	(2200)	T THOMAS	2440
3	JL BERNAL	2470	E OSBUN	2475	AM STEWART	2395
4	R MONTECATINE	2400	ES MARTINOVSKY	2360	PF TIMSON	2520
5	A GUDE	2310	D KOPEC	(2200)	PJ SOWRAY	(2200)
6	F CASARES	2375	I GOLYAK	2430	M READ	2440
7	M SUAREZ	2415	CA HAESSLER	2355	DJR BARNES	(2200)
8	P GARCIA	(2200)	JP VOTH	(2200)	AJ SLINGER	(2200)
9	F PEREZ	2170	LB OWEN	2350	PW HEMPSON	(2200)
10	C GIL	2395	RD WEISS	(2200)	MW WOOD	(2200)

NORWAY		ICELAND		WALES		
1	D ORSETH	2495	AD KARASON	2440	M THOMAS	(2200)
2	KW STRAND	2445	B THORBERGSSON	2500	M WILLIAMS	(2200)
3	T STRAND	2350	G HALLDORSSON	2340	G SINNETT	(2200)
4	V TAKSRUD	2305	G GISLASON	2265	GH PHILLIPS	(2200)
5	E IVERSAND	2445	E THORSTEINSSON	2265	MJ GRIFFITHS	(2200)
6	H THETING	2335	A KARLSSON	(2200)	D GUY	(2200)
7	T JOHANSEN	2360	B MAGNUSSON	2340	CJ GRIER	(2200)
8	ET GULLAKSEN	(2200)	G HANNESSON	2265	K SCANTLEBURY	(2200)
9	M KLINGEN	(2200)	B SIGURJONSSON	2270	J WHITTAKER	(2200)
10	A LARSEN	(2200)	JA HALLDORSSON	(2200)	P BOWERS	(2200)

PORTUGAL		IRELAND		
1	A OLIVEIRA	(2200)	AT LUDGATE	2450
2	C QUARESMA	(2200)	TD HARDING	2270
3	C SANTOS	(2200)	E GIBNEY	(2200)
4	F CLETO	(2200)	JF GIBSON	2385
5	F MENDES	(2200)	R MONTGOMERY	2335
6	J GONÇALVES	(2200)	F COLL	(2200)
7	P SAMPAIO	(2200)	J KILLANE	(2200)
8	J BRAY	(2200)	B GALLAGHER	(2200)
9	C BAJOUCO	(2200)	F HUMPHREYS	(2200)
10	LS REIS	(2200)	I CANTWELL	(2200)

The Tournament Secretary is Carlos Flores (Spain). Title norms for each board will be decided at the 1990 ICCF Presidium.

Full crosstables and results will be published in future editions of this magazine.

ICCF THEMATIC TOURNAMENTS

Tournaments for sections of 5-7 players, two games against each opponent. The top two players qualify for each final. The entry fee is £3.50 per group (payable to BPCF) to be sent to: Mr. A.M. Anderson, 3 Winterfield Gardens, Duns, Berwickshire, TD11 3EZ.

TT 1/91 KINGS GAMBIT

1 e4 e5 2 f4 exf4 3 Nf3 g5
4 h4 g4 5 Ne5
Entries close 1/10/90
Start 5/1/91

TT 2/91 SLAV/BOTWINNIK

1 d4 d5 2 c4 c6 3 Nf3 Nf6
4 Nc3 e6 5 Bg5 dxc4 6 e4 b5
7 e5 h6 8 Bh4 g5 9 Nxc4
Entries close 1/12/90
Start 1/2/91

TT 3/91 NYER'S OPENING

1 c4 g5
Entries close 10/1/91
Start 1/3/91

TT 4/91 BENONI

1 d4 Nf6 2 c4 c5 3 d5 a6
Entries close 1/2/91
Start 1/4/91

TT 5/91 SPANISH/JANISCH

1 e4 e5 2 Nc3 Nc6 3 Bb5 f5
4 Nc3 fxe4 5 Nxe4 d5 6 Nxe5
dxe4 7 Nxc6
Entries close 1/3/91
Start 1/5/91

TT 6/91 PONZIANI

1 e4 e5 2 Nf3 Nc6 3 c3 Nf6
4 d4
Entries close 1/4/91
Start 1/6/91

DANNY KOPEC (1980 Scottish OTB Champion)

Amongst our opponents in the 3rd NATT it is nice to see our old friend Danny Kopec IM on board 5(!) for the USA postal team - he plays against Tommy Craig. Here is a fascinating game he played by CC against that wizard analyst and unique chess writer, Stephan Gerzadowicz - thanks for the article, Stephan! - Editor

"All men need something to poetise and idealise their life a little - something which they value far more than its use and which is a symbol of their emancipation from the mere materialism and drudgery of daily life."

Theodore Parker

Dr. Danny Kopec is an International Master. But not a normal, ICCF, IM. No. Danny was awarded his title by an outfit called "FIDE" and for playing a chess variant known as OTB, or over-the-board. It works like this - you travel to some building that is usually not(!) a post office, and there you meet other OTB players in person and proceed to play several games in just one or two days. And no, you are not in a section where you play everyone at the same time, as we do. You play ONE game; when that finishes, you play another, etc. No time between moves to eat and sleep, go to work, play in the sun, whatever. No. Moves are timed by a clock, not by a calendar.

Craziest thing you ever saw. It'll never catch on.

But it would be interesting to see how IM Kopec would do at real chess, with postcards.....

White: IM Danny Kopec
Black: Stephan Gerzadowicz

Informal CC Game, 1987-8

1	e4	g6
2	d4	Bg7
3	Nc3	c6
4	Bc4	

KOPEC: I like this almost naively aggressive move against the modern.

4	d6
5	Qf3	

KOPEC: And this follow-up also looks too natural to pass up.

5	e6
6	Ne2	b5
7	Bb3	Bb7

GERZ: I've had this position vs USCF Postal Masters Michael Spiegel and Mark Miller. Spiegel now played 8 Be3.

8 Bf4

KOPEC: White strikes at d6 and prepares e5. I can't figure out how Black plans to develop.

8	Qe7
9	e5	

KOPEC: The point of this move is that if 9 ... dxe5 10 dxe5 c5 11 Nd5! exd5 12 Bxd5 etc; or if 10 Bxe5 (which may be more accurate) Bxe5 (... c5 11 Bd5!) 11 dxe5 c5 12 Nd5! etc. The basic idea is that Black cannot afford to have the position open with his lag in development and weak d6.

GERZ: Miller played 9 d5. Doesn't Kopec's move subject his Queen to my Bishop on b7? That's my whole idea, so I confidently looked at 9 ... dxe5 10 Bxe5 Bxe5 11

dxe5 c5, Δ ... c4, but 12 Nd5! is a bubble burster. If I take the knight, the Queen's Rook goes. 12 ... c4 was harder to analyse but White seemed better. One (unlikely?) example - 12 ... c4 13 Nxe7 Bxf3 14 Nxb8 Bxb2 15 Nf6+ Ke7 16 Rg1, which is slightly better for White.

! And general considerations suggest that Black should hesitate to open the position - 5 of his 8 moves have been pawn moves, while White has moved out 5 pieces.

Besides - the Hunker Down Variation looked like fun. Come and get me.

9	d5
10	h4	

KOPEC: White lusts for space on both sides of the board before Black gets developed. Stephan's response is virtually forced and not bad, for the King's Knight has a good home on f5. However, I am already preparing to meet ... Nf5 with Ng3 or f3, g4, possibly after Bg5; Nc1 Δ Nd3 is in White's plans.

10	h5
11	Nc1	a5
12	a3	Nh6

13 Bg5

KOPEC: This move is now quite strong as 13 ... Qc7 can be effectively met by 14 Bf6. The fact that Black successfully organises ... c5 in just three moves was somewhat of a setback to me.

13 Qf8

GERZ: 13 ... Qc7 or 13 ... Qd7!? (Δ ... c5) may be better. 13 ... Qf8 appealed to my sense of the...

- (a) Ridiculous
- (b) Resolute
- (c) Resilient
- (d) Refreshing (Really now)
- (e) ?

14 Nd3 Nd7
15 Qf4 Ba6

KOPEC: An excellent move which demonstrates that ... c5 will be possible while reincarnating the light-squared Bishop.

GERZ: Covering b5 so to allow ... c5. Also thinking to get the Bishop into the game with an eventual ... b4.

16 Ne2

KOPEC: White prepares for ... c5 by controlling d4.

16 c5

KOPEC: Perhaps 16 ... Nf5 is better, provoking White to weaken on the Kingside with f3 and g4. A sequence could go 16 ... Nf5 17 f3 c5 18 dxc5 Nxc5 19 g4 etc, which is unclear.

17 dxc5 Nxc5
18 f3

KOPEC: In retrospect this looks inaccurate, but I was still hoping to meet ... Nf5 with g4, or play g4 anyway. 18 Nd4 looks better now.

18 Rc8
19 0-0 Nf5
20 Kh2

KOPEC: My plan was Kh3 and g4 if that works tactically. It seems 20 ... Nxd3 21 cxd5 f6 could be troublesome for White, but he keeps an edge with 22 exf6 Bxf6 23 Racl.



GERZ: Now 20 ... Nxb3 21 cxb3 b4 was tempting, but 22 Rfc1! saves the Knight(s) and threatens powerful penetration, eg. 22 ... Ra8 23 Qd2 Δ Nc5. As before, Black's retarded development is a pretty good clue that opening the position is not in his best interest.

So I adopted the old Free One's Game with Exchanges Ploy. But that didn't work out so red hot. The more pieces off, the bigger percentage of my force is that bad Bishop.

Perhaps I was too impatient. Now I might try 20 ... Rc7 and, if I dare, 21 ... Kd7 and Qc8.

20 ... Bh6 IS good ... if White plays 21 Bxh6 Qxh6 22 Qxh6 Rxh6 23 Nxc5 Rxc5 24 g3 Ne3.

20 Bh6
21 Nd4 Bxg5
22 hxg5 Nxd4
23 Qxd4 Qe7

KOPEC: Black really does not appear much worse, if at all, at this point. White's only aggressive idea appears to be doubling Rooks on the 4th rank and working for a pawn break.

GERZ: 23 ... h4!? (no?)

24 Nxc5 Qxc5
25 Qxc5 Rxc5
26 c3 a4

KOPEC: If one move since the opening can be harshly criticised, it is this one. The black Bishop becomes very bad for the ending. Correct would seem to be ... Kd7, ... Rb8, and ... b4 when feasible.

GERZ: Yes, yes, I know it looks terrible, but I wanted c2 for my Rook. And what else? He'll put the King's Rook on d4 before I can prepare ... b4, then he will STILL be better developed. Geez....

27 Ba2 Ke7
28 Rfd1

GERZ: I don't know if what follows is Best Play - especially by Black - but I like it very much.

Black's in big trouble. If White is allowed to play 29 Rd4, Black dies of acute passinoma. Oh, modern technology might keep the body alive for a while, but his condition is terminal... Dr. Kopec's mercy killing would go something like Bd3, Kf4, Rh4 and g4.

The only chance for a cure is an emergency transfusion of activity. But is it too late to save the patient?



28 d4

KOPEC: ! An excellent and timely pawn sacrifice which opens up the position.

29 cxd4

KOPEC: This is the only way White can play for a win, and the next move is an essential part of any such effort.

29 Rc2

GERZ: Now look! I'm attacking the b-pawn, ... Bb7 will threaten his f-pawn, and the King's Rook is ready to swing into play. Surely this activity is worth a pawn? But White also

understands the importance of activity....

30 d5! exd5
31 Rxd5

GERZ: Arrgh. After Rad1 he's STILL ahead in development. Three obvious moves for Black are insufficient: 31 ... Bb7 32 Rxb5 Bxf3 33 Rf1; 31 ... Rd8 32 Rad1 Rxd5 33 Bxd5 Rxa2 34 Rc1; 31 ... Rxb2 32 Rad1! Rxa2 33 Rd7+ Ke6 (... Kf8 34 e6) 34 R1d6+ 35 Rxa6 36 Rxf7+ 37 Rxg6...

31 h4

KOPEC: An error in terms of timing, as after White's next, his attack is faster. Critical was 31 ... Bb7 32 Rxb5 Bc6 etc when Black has plenty of counterplay. The Bishop must be activated at all cost here.

GERZ: Development is where you find it. This seemed Black's best try ... but White comes first.

32 Rd1 h3
33 Rd7+ Kf8
34 Rd8+ Kg7
35 Rxb8 Kxb8
36 Bxf7

KOPEC: There were many ways for White to play for a win here. This seems like one of the best as Black is reminded that White has a Bishop and now a passed e-pawn.

36 hxc2
37 Bxg6 Re2
38 Be4

KOPEC: White now has two advanced passed pawns (of 3 connecteds), a centralised Bishop, and good Rook and Bishop coordination.

38 Resigns



Overseas Subscribers
Subscription for one year's editions of the Scottish CCA magazine can be obtained from the Editor for £6 p.a. (inclusive of postage)

SCOTTISH CORRESPONDENCE CHESS
Our magazine encourages members to express views about their Association and its activities. All contributions are welcome:
Articles: To the Editor
Games: To Games Editor
Letters: To the Editor, Secretary or any of our Controllers or Executive Committee Members.

WINNING CONTINUATIONS from page 17

SOLUTIONS

- A 1 ... Qd4! 2 Rd1 Nxd1 3 Qxd1 Qc3 4 Kf1 Qc4+ 0:1
Milkov-Konca, 10th CC Olympiad
- B 1 ... Qd6! 0:1 because of 2 Bxd7 Nf3+ 3 Kh3 Qh2+ 4 Kg4 Bh5+ 5 Kf5 Qe5+ mate.
Chalupetsky-Dr. Brady, Hung. CC 1912/3.
- C 1 ... h3 2 g3 Qg2+! 3 Nxc2 hxc2+ 4 Kgl Rh1+ mate.
Antilla-Vittanen, Finnish CC 1982.
- D 1 ... Qh3+!! 0:1
Farris-Pratt, CC (c1910)
- E 1 ... Ng3+ 2 hxc3 Be3! 0:1
Bardi-Czar, CC 1958
- F 1 ... Qd2 0:1 White has no defence after 2 Qxd2 exd2 3 Rb1 Bxc3+ 4 Ka2 e5 etc.
Varlamov-Isaev, XVII WCh Semi.

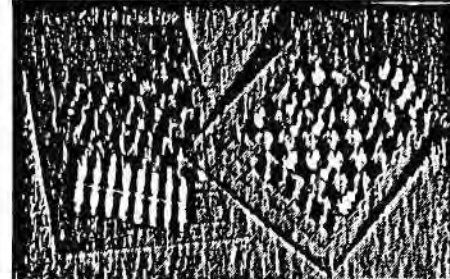
SCOTTISH CORRESPONDENCE CHESS ASSOCIATION

Office-Bearers & Life Members 1990-91

		Tel.No.
President (& Editor)	Alan P. Borwell 8 Wheatfield Avenue, Inchtute, Perthshire PH14 9RY	0828-86556
Vice President	George W.G. Livie 34 Laggan Road, Newlands, Glasgow G43 2SY	041-637-0722
Secretary	Alan Hind 6 Struan Road, Cathcart, Glasgow G44 3AT	041-637-4102
Treasurer	George D. Pyrich 53 Dunnikier Road, Kirkcaldy KY1 2RL	0592-204133
Assistant Secretary	Douglas M. Livie 58 Elmore Avenue, Glasgow G44 5AY	041-637-1936
International Secy	Philip M. Giulian 10 Broomfield Ave, Newton Mearns, Glasgow G77 5HR	041-639-1234
Asst International Secretary	Vacant	
Grading Officer	Michael T. Dyer, 448 St Vincent Street, Glasgow G3 8EU	041-204-1570
Publicity & Membership Officer	Alan J. Shaw, 48 Quarryknowe, Rutherglen, Glasgow	041-248-2887
Asst Publicity & Membership Officer	Vacant	
Honorary Life Member	Bernard B. Partridge	
Life Members	D.G. Anderson, G.M. Anderson, K.D. Anderson, C.R. Beecham, P.G. Bennett, Prof. G.H. Bird, A.P. Borwell, D.M. Bryson, B.V. Chalmers, G.G. Chalmers, T.J. Craig, D. Crichton, D.H. Dempster, R. Dickson, J. Eadie, R. Gibson, P.M. Giulian, A.B. Glass, J.R. Gracie, B.W. Grant, Dr. M.C. Grayson, M.A. Hammett, Mrs. E. Hartford, A.T. Hislop, W.J. Hutchison, R.M. Innes, J.P.E. Jack, R. Jackson, D.M. Jenkins, A Kilgariff D.A. Kilgour, D.M. Livie, G.W.G. Livie, J.P.L. Lumsden, K.B. McAlpine, J.M. MacArthur, A.J. McClelland, D. McCracken, A. McFadyen, Mrs. M. McGhee, M.E. McGhee, D. McKerracher, I. Mackintosh, T. McNorran, J.N. McNeill, D.G. McRoberts, J. McTaggart, I.A. Marks, I. Marshall, I.W.S. Mitchell, R. Mitchell, G.A. Morton, A.J. Muir, J.S. Murray, Dr. V.A. Nye, A.J. Norris, T. Paterson, A. Pearcey, V.A. Proudler, D.R. Reid, W.S. Roach, T. Russell, D.J. Savage, J. Seyfried, A.J. Shaw, G.R. Sprott, W.S. Smerdon, Dr. K.W.C. Stewart, M.A. Swystun, A. Taylor, T.A.H. Taylor, I. Thompson, J.M. Walker, W.P. Watson, T.S. Wickens, A. Wilson	

CORRESPONDENCE CHESS STATIONERY

SCCA Correspondence Score Cards.....16.....	£1.10
SCCA International Correspondence Cards.....100.....	£3.25
Window Envelopes.....100.....	£1.80



CORRESPONDENCE SETS

as illustrated

Overall size 8.25" x 5.75"	
Plastic Pieces.....	£1.30
Supplied in Ring Binder	
with 12 sets.....	£15.60
or 10 sets.....	£13.60
or 8 sets.....	£11.60
Ring Binder only.....	£ 3.95

CHESS INFORMANT

IMPORTED DIRECT FROM YUGOSLAVIA !!
SAME DAY DISPATCH
TO OUR STANDING ORDER CUSTOMERS

ENSURE THAT YOU RECEIVE YOUR COPY PROMPTLY

ORDER YOUR COPY OR BOOK A SUBSCRIPTION NOW

REMARKABLE VALUE AT £13.50 POST FREE FOR CURRENT ISSUES

Do you have problems choosing a gift for your Chess playing relatives or friends ?

Yes !?

Solve your problems by choosing from our range of

Gift Vouchers

and let the lucky person make their own selection from our Comprehensive Catalogue

Each voucher supplied with a free

Gift Card

featuring an attractive photograph of past Chess Masters.

Available for £5 £10 £20

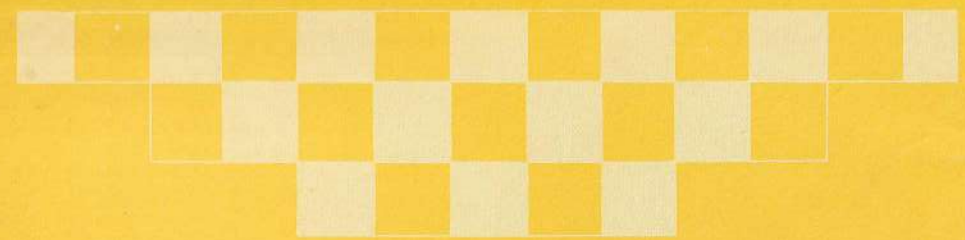
AVAILABLE FROM : CHESS SUPPLIERS (SCOTLAND) LTD.
P.O. BOX 67, 15 HOPE STREET, GLASGOW G2 6AQ.
TEL: 041-248-2887

CONTRACTS & ORDER STATEMENTS
 1978-1979
 1979-1980
 1980-1981
 1981-1982
 1982-1983
 1983-1984
 1984-1985
 1985-1986
 1986-1987
 1987-1988
 1988-1989
 1989-1990
 1990-1991
 1991-1992
 1992-1993
 1993-1994
 1994-1995
 1995-1996
 1996-1997
 1997-1998
 1998-1999
 1999-2000
 2000-2001
 2001-2002
 2002-2003
 2003-2004
 2004-2005
 2005-2006
 2006-2007
 2007-2008
 2008-2009
 2009-2010
 2010-2011
 2011-2012
 2012-2013
 2013-2014
 2014-2015
 2015-2016
 2016-2017
 2017-2018
 2018-2019
 2019-2020
 2020-2021
 2021-2022
 2022-2023
 2023-2024
 2024-2025

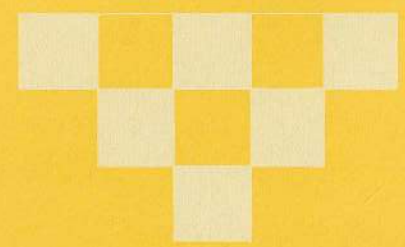
CONTRACTS & ORDER STATEMENTS
 1978-1979
 1979-1980
 1980-1981
 1981-1982
 1982-1983
 1983-1984
 1984-1985
 1985-1986
 1986-1987
 1987-1988
 1988-1989
 1989-1990
 1990-1991
 1991-1992
 1992-1993
 1993-1994
 1994-1995
 1995-1996
 1996-1997
 1997-1998
 1998-1999
 1999-2000
 2000-2001
 2001-2002
 2002-2003
 2003-2004
 2004-2005
 2005-2006
 2006-2007
 2007-2008
 2008-2009
 2009-2010
 2010-2011
 2011-2012
 2012-2013
 2013-2014
 2014-2015
 2015-2016
 2016-2017
 2017-2018
 2018-2019
 2019-2020
 2020-2021
 2021-2022
 2022-2023
 2023-2024
 2024-2025

CONTRACTS & ORDER STATEMENTS
 1978-1979
 1979-1980
 1980-1981
 1981-1982
 1982-1983
 1983-1984
 1984-1985
 1985-1986
 1986-1987
 1987-1988
 1988-1989
 1989-1990
 1990-1991
 1991-1992
 1992-1993
 1993-1994
 1994-1995
 1995-1996
 1996-1997
 1997-1998
 1998-1999
 1999-2000
 2000-2001
 2001-2002
 2002-2003
 2003-2004
 2004-2005
 2005-2006
 2006-2007
 2007-2008
 2008-2009
 2009-2010
 2010-2011
 2011-2012
 2012-2013
 2013-2014
 2014-2015
 2015-2016
 2016-2017
 2017-2018
 2018-2019
 2019-2020
 2020-2021
 2021-2022
 2022-2023
 2023-2024
 2024-2025

AVAILABLE FROM: GLEN CUPPERS (SCOTLAND) LTD
 10, 12, 14, 16, 18, 20, 22, 24, 26, 28, 30, 32, 34, 36, 38, 40, 42, 44, 46, 48, 50, 52, 54, 56, 58, 60, 62, 64, 66, 68, 70, 72, 74, 76, 78, 80, 82, 84, 86, 88, 90, 92, 94, 96, 98, 100, 102, 104, 106, 108, 110, 112, 114, 116, 118, 120, 122, 124, 126, 128, 130, 132, 134, 136, 138, 140, 142, 144, 146, 148, 150, 152, 154, 156, 158, 160, 162, 164, 166, 168, 170, 172, 174, 176, 178, 180, 182, 184, 186, 188, 190, 192, 194, 196, 198, 200, 202, 204, 206, 208, 210, 212, 214, 216, 218, 220, 222, 224, 226, 228, 230, 232, 234, 236, 238, 240, 242, 244, 246, 248, 250, 252, 254, 256, 258, 260, 262, 264, 266, 268, 270, 272, 274, 276, 278, 280, 282, 284, 286, 288, 290, 292, 294, 296, 298, 300, 302, 304, 306, 308, 310, 312, 314, 316, 318, 320, 322, 324, 326, 328, 330, 332, 334, 336, 338, 340, 342, 344, 346, 348, 350, 352, 354, 356, 358, 360, 362, 364, 366, 368, 370, 372, 374, 376, 378, 380, 382, 384, 386, 388, 390, 392, 394, 396, 398, 400, 402, 404, 406, 408, 410, 412, 414, 416, 418, 420, 422, 424, 426, 428, 430, 432, 434, 436, 438, 440, 442, 444, 446, 448, 450, 452, 454, 456, 458, 460, 462, 464, 466, 468, 470, 472, 474, 476, 478, 480, 482, 484, 486, 488, 490, 492, 494, 496, 498, 500, 502, 504, 506, 508, 510, 512, 514, 516, 518, 520, 522, 524, 526, 528, 530, 532, 534, 536, 538, 540, 542, 544, 546, 548, 550, 552, 554, 556, 558, 560, 562, 564, 566, 568, 570, 572, 574, 576, 578, 580, 582, 584, 586, 588, 590, 592, 594, 596, 598, 600, 602, 604, 606, 608, 610, 612, 614, 616, 618, 620, 622, 624, 626, 628, 630, 632, 634, 636, 638, 640, 642, 644, 646, 648, 650, 652, 654, 656, 658, 660, 662, 664, 666, 668, 670, 672, 674, 676, 678, 680, 682, 684, 686, 688, 690, 692, 694, 696, 698, 700, 702, 704, 706, 708, 710, 712, 714, 716, 718, 720, 722, 724, 726, 728, 730, 732, 734, 736, 738, 740, 742, 744, 746, 748, 750, 752, 754, 756, 758, 760, 762, 764, 766, 768, 770, 772, 774, 776, 778, 780, 782, 784, 786, 788, 790, 792, 794, 796, 798, 800, 802, 804, 806, 808, 810, 812, 814, 816, 818, 820, 822, 824, 826, 828, 830, 832, 834, 836, 838, 840, 842, 844, 846, 848, 850, 852, 854, 856, 858, 860, 862, 864, 866, 868, 870, 872, 874, 876, 878, 880, 882, 884, 886, 888, 890, 892, 894, 896, 898, 900, 902, 904, 906, 908, 910, 912, 914, 916, 918, 920, 922, 924, 926, 928, 930, 932, 934, 936, 938, 940, 942, 944, 946, 948, 950, 952, 954, 956, 958, 960, 962, 964, 966, 968, 970, 972, 974, 976, 978, 980, 982, 984, 986, 988, 990, 992, 994, 996, 998, 1000



MAKE THE RIGHT
MOVE



INSURE TODAY-
BE SURE TOMORROW.



General Accident

World Headquarters, Pitheavlis, Perth, Scotland PH2 0NH