

SCOTTISH CORRESPONDENCE CHESS ASSOCIATION
Office-Bearers & Life Members 1991-92

		Tel.No.
President (& Editor)	Alan P. Borwell 8 Wheatfield Avenue, Inchture, Perthshire PH14 9RY	0828-86556
Vice President	George W.G. Livie 34 Laggan Road, Newlands, Glasgow G43 2SY	041-637-0722
Secretary	Alan Hind 6 Gordon Drive, Netherlee, Glasgow G44 3TF	041-637-4462
Treasurer (& Games Editor)	George D. Pyrich 53 Dunnikier Road, Kirkcaldy KY1 2RL	0592-204133
Assistant Secretary	Douglas M. Livie 58 Elmore Avenue, Glasgow G44 5AY	041-637-1936
International Secy	Philip M. Giuliani 10 Broomfield Ave, Newton Mearns, Glasgow G77 5HR	041-639-1234
Asst International Secretary	Colin A. Macgregor Top Flat Left, 9 Argyle Street, Paisley PA1 2ET	041-887-6619
Grading Officer	Michael T. Dyer 448 St Vincent Street, Glasgow G3 8EU	041-204-1570
Asst Magazine Editor	Ian W.S. Mitchell, 54 Strathtay Road, Letham, Perth, PH1 2LZ	0738-38257
Executive Member	C. Richard Beecham, 28 Morris Road, Prestwick, Ayrshire, KA9 2JW.	0292-76984
Honorary Life Member	Bernard B. Partridge	
Life Members	D.G. Anderson, G.M. Anderson, K.D. Anderson, C.R. Beecham, P.G. Bennett, Prof. G.H. Bird, A.P. Borwell, D.M. Bryson, B.W. Chalmers, G.G. Chalmers, T.J. Craig, D. Crichton, D.H. Dempster, R. Dickson, J. Eadie, R. Gibson, P.M. Giuliani, A.B. Glass, J.R. Gracie, B.W. Grant, Dr. M.C. Grayson, M.A. Hammett, Mrs. E. Hartford, A.T. Hislop, W.J. Hutchison, R.M. Innes, J.P.E. Jack, R. Jackson, D.M. Jenkins, A Kilgariff D.A. Kilgour, D.M. Livie, G.W.G. Livie, J.P.L. Lumsden, K.B. McAlpine, J.M. MacArthur, A.J. McClelland, D. McCracken, A. McFadyen, Mrs. M. McGhee, M.E. McGhee, D. McKerracher, I. Mackintosh, T. McMorran, J.N. McNeill, D.G. McRoberts, J. McTaggart, I.A. Marks, I. Marshall, I.W.S. Mitchell, R. Mitchell, G.A. Morton, A.J. Muir, J.S. Murray, Dr. V.A. Nye, A.J. Norris, T. Paterson, A. Pearcey, V.A. Proudler, D.R. Reid, W.S. Roach, T. Russell, D.J. Savage, J. Seyfried, A.J. Shaw, G.R. Sprott, W.S. Smerdon, Dr. K.W.C. Stewart, M.A. Swystun, A. Taylor, T.A.H. Taylor, I. Thompson, T. Thomson, J.M. Walker, J. Watson, W.P. Watson, T.S. Wickens, A. Wilson	

SCOTTISH C.C.A. MAGAZINE No. 38

December 1991

EDITORIAL

(by Alan Borwell)

This is another bumper edition which we hope will provide good reading over the festive period!

With Scotland now a full national member of ICCF, we provide more information about international correspondence chess and hope to see even more of our players enjoying games and friendships with overseas opponents.

Congratulations to David Kilgour on achieving his IM title in our Invitation Tournament (p.83), to Tommy Craig on winning the Scottish Championship (p.9) and Knights of the Square Table as League Champions (p.13).

After 5 years as our Games Editor, Douglas Bryson GM is handing over to George Pyrich. We are most grateful to Douglas for his excellent contributions and wish George well in his new position (see also p. 25).

We welcome the significant number of new members and also existing members who have renewed - we hope you will have an enjoyable season!

Have a Merry Christmas and a Happy and Successful 1992!

INDEX OF CONTENTS

	Page(s)	Page(s)
Editorial/Index of Contents	1	Theory Corner 46/47
Secretarial Notes	2	Winning Continuations 48/50
International Corres Chess	3/7	British Championship Art. 51/55
Championship/Candidates 1989/91	8	Classic Games of CC 56/57
Championship/Candidates 1990/92	9	International Report 58
Premiers/Majors/Quartets	10/11	Olympiad Report 59/61
Handicap	12	Olympiad Tables 62/64
Openings	13	European TT 65/69
SCCA League 1990/91	13/15	North Atlantic TT 70/81
Scottish Open Tournaments	16/17	Friendly Internationals 82
Bits 'n' Pieces	18/19	Invitation Tournaments 83
Book Reviews	20/23	International Tournaments 84/86
ICCF Tournaments	24	Foreign Books 87
Games Section	25/45	100 Club 88

Subscription Rates Life Member - £50, Annual Member - £8 (incl Magazine)
1991-92 SCCA Magazine only - £5 per annum (incl postage)

SECRETARIAL NOTES (by Alan Hind)

Welcome to the 1991/92 season. Hopefully the pairings will now have been made and you will have either received or are about to receive details of your opponents. I hope you will enjoy your games!

Much news this issue about our full recognition by ICCF and how you can enter international events. We have already noted your interest from the entry forms.

Administratively, we are reconsidering the SCCA rules. The last full review was in 1985 and only a few supplements have been incorporated since then. Any changes will be for implementation in 1992/93, which will remove any ambiguities and let you concentrate on playing chess!!

*We bring the chess world
to your door!*

write or phone today to:

CHESS DIRECT Ltd.

P.O. Box 18, Mexborough.
South Yorks. S64 9AR
Tel. 0709 873653

- computers, stationery, sets, clocks, boards...
- We stock the widest selection of chess books from the U.K. and overseas
- Second-hand and bargain books available.
- Send a 10"x7" s.a.e. for lists.
(please quote ref. SCCA with your request)

INTERNATIONAL CORRESPONDENCE CHESS

(by Alan Borwell)

Now that Scotland is a full member of ICCF, your Executive Committee asked me to write an article giving our members more information about international correspondence chess.

The first thing to say is that participation is not dependent upon the achievement of a certain standard or rating level - **anyone** can enter an ICCF individual event. Secondly, although Scotland does select its best teams for the Olympiad, European and North Atlantic team tournaments, we also arrange friendly matches against countries and other national associations to enable players of all standards to participate.

If you have never played correspondence chess with players from other countries, then here is some basic information:

1. Games are played under ICCF rules and using international numeric notation. Our Scottish CCA card is highly regarded for use and is available from Chess Suppliers (Scotland) Ltd. A completed specimen would look like this:

Scottish Correspondence Chess Association

GAME PARTIE	MOVE ZUG	WHITE WEISS	BLACK SCHWARZ
A	7	5171 (0.0)	6877 (8,7)
B	6		3874 (8,4)
	7	2142 (Nbd2)	

8	18	28	38	48	58	68	78	88	
7	17	27	37	47	57	67	77	87	
6	16	26	36	46	56	66	76	86	
5	15	25	35	45	55	65	75	85	
4	14	24	34	44	54	64	74	84	
3	13	23	33	43	53	63	73	83	
2	12	22	32	42	52	62	72	82	
1	11	21	31	41	51	61	71	81	
		a	b	c	d	e	f	g	h

Postmark date Poststempel datum	17/11	Received Erhalten	22/11	Sent Gesandt	23/11	My time Bedenzeit	1				
My total time Meine Gesamtzeit	10 days Tage	Your total time Ihre Gesamtzeit	9 days Tage	Tournament Turnier	Greenland v Scotland	Your move is impossible Ihr Zug ist unmöglich	Holidays from Urlaub von	10/12 to bis	21/12	Yours sincerely Mit freundlichen grüssen	<i>Alan</i>

I offer draw Ich biete remis an	I accept Ich nehme an	I decline Ich lehne ab	I resign Ich gebe auf
------------------------------------	--------------------------	---------------------------	--------------------------

This notation is very simple, recording the number of the square vacated followed by the number of the square being occupied. For castles, the move of the King is recorded, eg. White castles K-side is 5171 etc. Another reason for the use of this notation is that it is "languageless" in that pieces do not need to be specified, for example Knight (Kt or N), Springer (S) or Cavalier (C) etc.....

The front of the card is for the name and address of the receiver, with space for any comments between the participants (most international CC players understand English but you can also practise your foreign language writing skills if you feel so inclined!)

2. The current postal rate for chess cards to EEC countries is 24p (the same as for first class mail in UK), to other European destinations 28p and elsewhere in the world 33p.
3. The time limit is at the rate of 10 moves in 30 days, and you have a second chance if you exceed the time limit. With the postal transmission times being generally longer than for domestic games, you could probably manage to play twice as many international games and not notice a significant difference. Obviously if you have opponents in Western Europe or Scandinavia, the games will progress more speedily than those with players from other Continents or the more distant parts of Eastern Europe.
4. ICCF individual tournaments are organised both Worldwide and on a European only basis for groups of 7 players and 15 players (except World Tournaments in Class III which have only 7-player groups). The current entry fees are as follows:

	World		European	
	15-player	7-player	15-player	7-player
Master Class (over 2100)))))
Higher Class (1950-2100)))))
I Class (1750-1950)) £5) £4) £5) £4
II Class (1500-1750)))))
III Class (under 1500)	N/A)))

The approximate standards of the respective groups in ICCF/SCCA rating terms are shown for guidance. New entrants should normally select the appropriate level of tournament, but this is not mandatory and our International Secretary, Philip Giulian, will be pleased to advise members who require more information or guidance.

Simultaneous participation in these promotion tournaments in different classes is not allowed but players may participate in several tournaments of the same class. Section winner(s) gain the right to participate in the next higher class.

Players not having an SCCA rating but with an SCA OTB grade should quote this on the entry form as the SCA and Scottish CCA both use the same ELO system, as does ICCF.

ICCF tournaments are also available for Thematic events based on selected openings. The entry fee for a group of normally 5 or 7 players is £4. Full details of the next Thematic tournaments due to be started are shown elsewhere in this and every SCCA Magazine.

Periodically, ICCF organise World Cup events run in Preliminary, Semi-Final and Final sections, each of 7 to 11 players. Winners progress to the next stage(s).

A prerequisite for entry via the Scottish CCA to all ICCF events is that the player is and continues to be a full Scottish CCA member for the duration of the event.

5. All players entering ICCF events via the Scottish CCA will have their results incorporated into the ICCF rating system and will be designated SCO in Fernschach, on ICCF rating/title lists and for all other international purposes. Full details of the ICCF rating system were reproduced in Scottish CCA Magazine No. 29 and of the SCCA system in No. 25/26 and No. 30 (copies of these articles are available from me on request for £2 payable to Scottish CCA, with large SAB).

We earnestly ask each member to consider participation in at least one ICCF event in support of your Executive's successful efforts to achieve full ICCF status for Scotland. As a correspondence chess player both domestically and internationally for over 30 years, I can only commend this broadening of one's chess horizons. The enjoyment and friendships I have gained in playing over 400 games against overseas opponents has been richly rewarding and something I will always value immensely. Why not give it a try now by sending an entry on the enclosed form to Philip Giulian, Scottish CCA International Secretary, 10 Broomfield Avenue, Glasgow G77 5HR.

Your Executive Committee recently defined the International Strategy of the Scottish Correspondence Chess Association, as follows:

SCOTTISH CCA INTERNATIONAL STRATEGY - EFFECTIVE FROM 1/1/92

1. The Scottish CCA, as a full member of ICCF, will assume total responsibility for dealing with all international CC affairs for Scotland, directly with ICCF and its member countries.
2. The Scottish CCA will continue its affiliation to the Scottish Chess Association, being the respective National organisations based in and responsible for correspondence chess and over-the-board chess for Scotland.
3. The Scottish CCA continues to support the general principles and spirit of the York Agreement, as equal signatories, in its relationships with BPCF and Welsh CCA, taking account of ongoing developments.
4. The Scottish CCA will encourage its members to support appropriate "British" events organised by BPCF and make a donation towards the administrative costs.

A complete copy of the most recent ICCF Rating List (32 pages) can be obtained by sending £3 and a large s.a.e. to Alan Borwell, 8 Wheatfield Avenue, Inchtute, Perthshire, PH14 9RY

5. The Scottish CCA will determine a clear basis for members' eligibility for entry to ICCF events, which will take into account:
 - a. current or previous residence in Scotland
 - b. Scottish birth or parentage
 - c. the players' own wishes regarding country of allegiance.
6. Players entering and being accepted by the Scottish CCA for ICCF events will be designated SCO in accordance with the new ISO codes being introduced by ICCF from 1/1/92, and they will be shown as SCO on future ICCF rating lists and all official documentation /publications.
7. The Scottish CCA will determine the level of fees it will charge to its members for entry to ICCF events from 1/1/92.
8. From 1/1/92, tournament entry fees will be sent direct to the SCCA Treasurer for onward payment to the ICCF Treasurer.
9. International CC events and activities will be stepped up significantly in Scotland during the 1990s, including the hosting of the 1994 ICCF Congress, organisation of new international CC tournaments, involvement in new CC publications, arrangement of further friendly internationals etc.
10. The Scottish CCA will organise its structure appropriately to ensure efficient promotion and administration of increased international CC activity for its members.

International Secretary	Philip M. Giulian) See front
Asst International Secretary	Colin A. Macgregor) cover for
Delegate to ICCF	Alan P. Borwell) addresses

All international contact concerning Scotland should be with the above officials.

International Selection Committee
Philip Giulian, Richard Beecham and George Pyrich



CHAMPIONSHIP 89-91 Controller: A Maxwell

No.	1	2	3	4	5	6	7	8	9	Pts	
1 R KILPATRICK	●	0	0	1	1	1	1	1/2	0	4 1/2	3:
2 G D PYRICH	1	●	1	0	1	0	1/2	1/2	0	4	6:
3 J A B STEVENSON	1	0	●	1/2	1	0	1/2	1	1	5	2
4 H J MOOHAN	0	1	1/2	●	0	0	0	0	1/2	2	8:
5 D HARVEY	0	0	0	1	●	0	0	0	1	2	8:
6 I S CAMPBELL	0	1	1	1	1	●	0	0	0	4	6:
7 C F BOYLE	0	1/2	1/2	1	1	1	●	0	1/2	4 1/2	3:
8 T J CRAIG	1/2	1/2	0	1	1	1	1	●	1/2	5 1/2	1
9 A T HISLOP	1	1	0	1/2	0	1	1/2	1/2	●	4 1/2	3:

CANDIDATES 89-91 Controller: A Hind

No.	1	2	3	4	5	6	7	8	9	Pts	
1 N DOWN	●	1	1	1/2	1	1	1	1	1/2	7	1
2 S GOVLAND	0	●	0	1/2	0	0	0	0	0	1/2	8:
3 S L CLARK	0	1	●	0	0	1	1	1/2	0	3 1/2	6
4 M McBBTH	1/2	1/2	1	●	1/2	1	1/2	1/2	1/2	5	4
5 H COOPER	0	1	1	1/2	●	1	1/2	1	1/2	5 1/2	3
6 D A GIBB	0	0	0	0	0	●	0	1/2	0	1/2	8:
7 I A MARKS	0	1	0	1/2	1/2	1	●	1/2	1/2	4	5
8 I AIRD	0	1	1/2	1/2	0	1/2	1/2	●	0	3	7
9 T THOMSON	1/2	1	1	1/2	1/2	1	1/2	1	●	6	2



CHAMPIONSHIP 90-92 Controller: A Maxwell

No.	1	2	3	4	5	6	7	Pts
1 G D PYRICH	*	0	1	1/2		1/2	1/2	
2 J A B STEVENSON	1	*			1	1/2	1/2	
3 C F BOYLE	0		*	0		0	0	
4 A T HISLOP	1/2		1	*	1			
5 M T DYER		0		0	*			
6 P MCGOWAN	1/2		1			*	1	
7 G WALLWORK	1/2		1			0	*	

CANDIDATES 90-92 Controller: C R Beecham

No.	1	2	3	4	5	6	7	8	9	Pts
1 T THOMSON	*		1/2	1	0	1/2	1/2	1		
2 G BIRD		*	1	1	0			1		
3 A W I CAMPBELL	1/2	0	*	1	1	0	0	0		
4 W M COOK	0	0	0	*	1	1	0			
5 D HARVEY	1	1	0	0	*		0	1		
6 D HOLMES	1/2		1	0		*	1/2			
7 W HULME	1/2		1	1	1	1/2	*	1/2		
8 A MAXWELL	0	0	1		0		1/2	*		
9 C C MCKAY									*	



PREMIER TOURNAMENTS

Controller; Sections A-C : I S Campbell; Sections D/F : R S Montgomery

A	1	2	3	4	5	Pts
1 RJ BURRIDGE	●	0½	1½	0	1	1
2 D NEIL	1½	●	1½	1	1	6½
3 JW McINTYRE	1	1½	●	0	1	5½
4 KD ANDERSON	1	0	1	●	1	4
5 P McDONNELL	0	0	0	0	●	0

B	1	2	3	4	5	Pts
1 JS CAIRNEY	●	1½	1½	0½	1	4
2 B GOODWIN	1½	●	1	1	0A	
3 AD KILGARIFF	1½	0	●	1½	1	3½
4 K GORDON	1½	1	0	●	1½	3½
5 MF PEARCE	0½	1A	1	0	●	

C	1	2	3	4	5	Pts
1 NR McEVAN	●	0	0	1	0½	1
2 A WRIGHT	1	●	1	0	1	4½
3 CC McKAY	1	1½	●	1	1	5½
4 J ANDERSON	1½	1	0	●	1	3½
5 NH DUNN	1	1	1	1	●	5½

D	1	2	3	4	5	Pts
1 RF TURNER	●	1½	1	1	1	6½
2 A WISBET	1½	●	1	1	1½	5½
3 R BEACON	0	0	●	1	1	4
4 D CRICHTON	0	0	0	●	1	½
5 SG MACKENZIE	1	0	1	1	●	3½

E	1	2	3	4	5	Pts
1 J MERRIFIELD	●	0	0	0	0	0
2 D SALTER	1	●	1	0	1	5½
3 J COPLBY	1	0	●	1	1	5
4 JM HERRIES	1	1	1	●	1	5½
5 V HARPER	1	0	1	0	●	4

F	1	2	3	4	5	Pts
1 V RUTHERFORD	●	1½	1	1	-	5
2 AG STALKER	0	●	1	1	-	3½
3 SR MITCHELL	0	1	●	1	-	2½
4 RA GIULIAN	0	0	1	●	-	1
5 TM TALBOT	-	-	-	-	●	w/o

MAJOR TOURNAMENTS

Controller; Sections A/B : D Salter; Sections C/D : J Anderson

A	1	2	3	4	5	6	Pts
1 JR FISHER	●	0	0	1	1	0	4
2 M MAY	1	●	1	1½	0	1½	7½
3 V McGLINCHEY	0	0	●	0	0	0	1
4 J THORNTON	0	1	0	●	0	0	1½
5 R DOWSON	1	1	1	1	●	0	7
6 JB VEIR	1	1	1	1	1	●	9

B	1	2	3	4	5	6	Pts
1 V HARPER	●	1½	1	-	1	1	7
2 RV STOKES	1½	●	1	-	1	0	5
3 KJ GROSE	0	0	●	-	1	0	2
4 J McLEAN	-	-	-	●	-	-	w/o
5 F ANDRES	0	0	0	-	●	0	0
6 MC McQUEEN	0	0	1	1	-	1	6

C	1	2	3	4	5	6	Pts
1 F HALL	●	1	1	1	1	0	5
2 A MacQUEEN	1	●	1	1	1	0	6
3 RG EBDON	1	0	●	0	1	0	2
4 DR CUMMING	0	1	0	●	1	0	5
5 M HOOD	1	0	1	0	●	0	4
6 DA HUGHSON	1	1	1	1	1	●	8

D	1	2	3	4	5	6	Pts
1 DV PENMAN	●	1	1	1	1	0	8
2 B MILLIGAN	0	●	1	0	1	1	4
3 A ARMSTRONG	0	0	●	1	1	1	4
4 IVS MITCHELL	0	1	1	●	0	1	6
5 G McKNIGHT	0	1	1	0	●	1	6
6 ML GALLACHER	0	0	1	0	0	●	2

QUARTETS 1990-91

(Controller - Ian W S Mitchell)

POSTAL KNIGHT	1	2	3	4	Pts	POSTAL SHIELD	1	2	3	4	Pts	
1 R STOKES	●	1	1	1	1	5	1 J R PARKER	●	0	1	1	2½
2 T MASON (dec'd)	-	-	-	0	0	0	2 M MITCHELL	1	●	1	1	6
3 J G BLENCOVE	1	1	●	0	1	4	3 E A BAILEY	0	0	●	1	1
4 R DOWSON	0	1	1	●	0	3	4 S M YOUNG	1	0	1	●	2½

Q151	1	2	3	4	Pts	Q152	1	2	3	4	Pts	
1 K GORDON	●	1	0	1	1	4	1 R BEACON	●	1	1	0	3½
2 M C McQUEEN	1	●	1	0	1	3	2 D SALTER	0	1	●	0	2
3 G McMASTER	0	1	0	●	1	2½	3 J CUNNINGHAM	0	1	●	1	2½
4 A MacQUEEN	0	1	1	0	●	2½	4 S MacGILCHRIST	1	1	1	●	4

Q153	1	2	3	4	Pts	Q154	1	2	3	4	Pts	
1 A WRIGHT	●	1	0	1	1	4	1 K J GROSE	●	0	0	0	0
2 A ARMSTRONG	0	1	●	0	1	2	2 A G B BIRD	1	●	0	0	2
3 J CASSIDY	1	1	●	1	0	3½	3 I REEMAN	1	1	●	1	5½
4 F R ROSS	0	1	1	●	0	2½	4 T McMORRAN	1	1	0	●	4½

Q155	1	2	3	4	Pts	Q156	1	2	3	4	Pts	
1 D G McROBERTS	●	1	1	0	1	4	1 S R CAPSBY	●	1	0	0	1½
2 D R CUMMING	1	0	●	1	1	4	2 J MERRIFIELD	1	●	1	0	2½
3 A MacQUEEN	0	1	0	●	0	1	3 R PELLIS	1	0	●	0	2
4 S R MITCHELL	0	1	0	1	●	3	4 R F TURNER	1	1	1	●	6

Q157	1	2	3	4	Pts	Q158	1	2	3	4	Pts	
1 R G EBDON	●	0	0	0	1	1	1 P McCREA	●	0	0	1	
2 W CAMBRON	1	●	0	0	0	2	2 T TAIT	1	●	1		
3 I MACKINTOSH	0	1	●	1	1	5	3 D R R ELLIS	1	●			
4 J N FALCONER	1	1	0	●	0	4	4 M M KING	0	0	●		

Q159	1	2	3	4	Pts	Q160	1	2	3	4	Pts
1 R BEACON	●	1	1	1		1 V A McINTOSH	●	0	0	0	w/o
2 E A BAILEY	1	●	1	1		2 M P FORD	1	●			
3 S J BACZKOWSKI	1	1	●	0		3 R BEACON	1	●			
4 A N MacMILLEN	1	1	1	●		4 J BELL	1		●		

Entries to Quartets can be made at any time to Alan Hind. New sections will be formed when there are four new players awaiting pairings.

HANDICAP TOURNAMENT (by Allan Hislop)

Here are more results received between 17th August and 12th October.

A Armstrong	1	R Burrige	1
F Ross	2	R T Stokes	0
R Burrige	2	D R Cumming	0
B Milligan	2	W McIntosh	0
A C Brown	2	W McIntosh	0
G McMaster	1	R Pells	0
A C Brown	1	C MacGregor	0
S Young	½	D R Cumming	½
H McKean	2	R T Stokes	0
J Melvin	1½	B Milligan	½
A Armstrong	2	D R Cumming	0
P McCrea	2	J Cassidy	0

These are the final results which were considered for the season's prizes and promotion.

Prizes for the 1990/91 season went to the following:

G McMaster, D R Cumming, R Beacon, A Armstrong, S Young

Promotion to Class 1:	S Young
Class 2:	D R Cumming, A Armstrong, R Burrige
Class 3:	R Ebdon
Class 4:	J Cassidy, G McMaster
Class 5:	F Ross, A C Brown

Promotion is obtained if 30 points are gained from the best 5 results from at least 6 games, ie. 3 opponents must be requested if you are looking for promotion. I have one or two players this year playing only two opponents, so unless they are content with this, they cannot get promotion, even if they get 30 points from the 4 games. So, if you have sent off your entry form with less than 3 opponents and wish to enter the promotion stakes and prizes, please contact the Secretary or myself quickly. Finally, check your results as published in the magazine to ensure they are correct and that none are missing. If you have any queries, please contact the Controller.

OPENINGS TOURNAMENTS (Controller: Tom Thomson)

Section OT1 (Nimzowitsch - Larsen Attack)

No	1	2	3	4	5	Pts	Pos
1 A G Stalker	●	11	½	100	1		
2 J Cassidy	00	●	00	01	0½	1½	
3 R Dowson	½0	11	●	0½	11	5	
4 G Wood	11	10	½1	●	11	6½	1
5 D Crichton	0	1½	00	00	●		

Section OT2 (Sicilian 3 Bb5+)

No	1	2	3	Pts	Pos
1 J G Blencowe	●	00	11	2	2
2 S Macgilchrist	11	●	11	4	1
3 D V Penman	00	00	●	0	3

Section OT3 (Sicilian 3 Bb5+)

No	1	2	3	Pts	Pos
1 J Cassidy	●	10	11	3	1
2 J Merrifield	01	●	00	1	3
3 P Andres	00	11	●	2	2



SCOTTISH CCA LEAGUE 1990/91

Congratulations to the new League Champions, Knights of the Square Table in their first season in Division 1. Last season's joint winners, Streatham & Brixton, were easy runners-up, with the remaining teams trying to avoid relegation to Division 2. The final situation may have to be decided by board count, when all team entries for the new season have been received.

In Division 2, Kirkcaldy were successful in gaining an immediate return to the Championship, along with Endgame. In Division 3, Hawick Superkings just headed Kirkintilloch, whilst Murray Johnstone and Alka Seltzer are promoted from Division 4.

See overleaf for full results.....

SCOTTISH CCA LEAGUE 1990/91

DIVISION 1 (Controller - A. Swann)

A STREATHAN & BRITTON - 6		B BLACK KNIGHT 3½	
1 C A McNab	½ 1 v E1	1 G R Sprott	0 ½ v D1
2 S R Gillam	0 ½ v D2	2 I S Campbell	½ 0 v C2
3 R A Inglis	½ ½ v C3	3 T Johnston	½ 1 v F3
4 Mrs M Inglis	0 1 v B4	4 I Reeman	1 0 v A4
5 R Haldane	1 1 v F5	5 D R Reid	0 0 v E5

C CROWWOOD "A" 3½		D KNIGHTS OF THE SQUARE TABLE - 9	
1 I A Marks	½ ½ v F1	1 P Millican	1 ½ v B1
2 P McGowan	½ 1 v B2	2 B Eley	1 ½ v A2
3 V Hulme	½ ½ v A3	3 T Upton	1 1 v E3
4 J Doyle	0 0 v E4	4 Dr K Verney	1 1 v F4
5 P Rodger	0 0 v D5	5 N Down	1 1 v C5

E CHESS SUPPLIERS "A" 4½		F PERTH CORRESPONDENTS - 3½	
1 A J Shaw	½ 0 v A1	1 A P Borwell	½ ½ v C1
2 G W G Livie	0 0 v F2	2 D A Gibb	1 1 v E2
3 C F Boyle	0 0 v D3	3 W Rutherford	½ 0 v B3
4 D M Livie	1 1 v C4	4 B Jenkins	0 0 v D4
5 L R McKenzie	1 1 v B5	5 P B Grant	0 0 v A5

DIVISION 2 (Controller - A. Hiebet)

A CATHCART 2		B WANDERING DRAGONS "A" 6	
1 A T Hislop	1 ½ v E1	1 M J L Orr	1 1 v D1
2 S Freed	0 ½ v D2	2 I Mullen	½ ½ v C2
3 D McRoberts	0 0 v C3	3 S Gowland	0 0 v F3
4 J Parker	0 0 v B4	4 A J C Ferguson	1 1 v A4
5 D Gilchrist	0 0 v F5	5 C McKay	½ ½ v E5

C WANDERING DRAGONS "B" 4½		D IRVINE 4	
1 D Crichton	0 0 v F1	1 D Gillespie	0 0 v B1
2 J Konarski	½ ½ v B2	2 G McPeake	1 ½ v A2
3 C Donkin	1 1 v A3	3 J Shankland	0 0 v E3
4 H Nimmo	0 0 v E4	4 G King	1 1 v F4
5 D S Laing	1 ½ v D5	5 A Paulay	0 ½ v C5

E KIRKCALDY KINGS 7		F BNDGANE 6½	
1 G D Pyrich	0 ½ v A1	1 R W Stokes	1 1 v C1
2 A Burnett	1 ½ v F2	2 A Kilgariff	0 ½ v E2
3 T Thomson	1 1 v D3	3 M B McGhee	1 1 v B3
4 I Marshall	1 1 v C4	4 P Ferry	0 0 v D4
5 M C Grayson	½ ½ v B5	5 M Mitchell	1 1 v A5

DIVISION 3 (Controller - M.C. McQueen)

A FLYING TEAPOTS 4		B BRUTAL REALISM 2	
1 P Cassar	½ ½ v E1	1 P Coffield	0 0 v D1
2 D V Gibbs	0 0 v D2	2 B Keenan	0 0 v C2
3 R D Hirsch	0 1 v C3	3 J S Murray	1 1 v F3
4 M Nesbit	1 1 v B4	4 A McLure	0 0 v A4
5 R Thornhill	0 0 v F5	5 A Thomson	- - v E5

C HAVICK SUPERKINGS 7½		D KIRKINTILLOCH 7	
1 A Armstrong	1 1 v F1	1 A Swann	1 1 v B1
2 J Taylor	1 1 v B2	2 R Turner	1 1 v A2
3 B Brewster	1 0 v A3	3 P McConnell	1 0 v E3
4 L Kilday	0 ½ v E4	4 W Harper	1 1 v F4
5 B Milligan	1 1 v D5	5 W Clark	0 0 v C5

E CROWWOOD "B" 4		F VICTORIA 3½	
1 A Maxwell	½ ½ v A1	1 R E Clapham	0 0 v C1
2 D L Gillespie	0 ½ v F2	2 F Stevenson	1 ½ v E2
3 J Fisher	0 1 v D3	3 J Anderson	0 0 v B3
4 R Henery	1 ½ v C4	4 M Chalmers	0 0 v D4
5 G Lyburn	- - v B5	5 N Ferrie	1 1 v A5

DIVISION 4 (Controller - G. McKnight)

A WANDERING DRAGONS "C" 1½		B MURRAY JOHNSTONE 7	
1 P Young	½ 0 v E1	1 C R Beecham	1 1 v D1
2 G Sanderson	½ ½ v D2	2 A Minnican	1 ½ v C2
3 Ms A Donkin	0 0 v C3	3 M Green	0 0 v F3
4 D Poots	0 0 v B4	4 A Hind	1 1 v A4
5 D Morgan	0 0 v F5	5 I V S Mitchell	1 ½ 1 v E5

C KNIGHT SAC 5½		D SAUGHTON 3	
1 T Tait	½ ½ v F1	1 B Morrice	0 0 v B1
2 R Holland	0 ½ v B2	2 V McKenzie	½ ½ v A2
3 P Tait	1 1 v A3	3 J Rogers	0 0 v E3
4 I McKechnie	0 1 v E4	4 I H Ali	½ ½ v F4
5 A Petrie	½ ½ v D5	5 C McGuire	½ ½ v C5

E ROCKY MEETS MARILYN MONROE 6		F ALKA SELTZER 7	
1 G Reid	½ 1 v A1	1 R Lothian	½ ½ v C1
2 S Mackenzie	½ ½ v F2	2 A Coull	½ ½ v E2
3 N R McEwan	1 1 v D3	3 P Watson	1 1 v B3
4 L Stephenson	1 0 v C4	4 G Argo	½ ½ v D4
5 R McDonald	0 ½ v B5	5 J Ross	1 1 v A5

3rd SCOTTISH OPEN TOURNAMENT

There are three sections and the top two players in each section qualify for the Final:

1st SCOTTISH OPEN TOURNAMENT FINAL

	1	2	3	4	5	6	7	8	9	Pts
1 GE WALLWORK	•				1				1	
2 N DOWN		•			1				1	
3 N KILGARIFF			•		1/2	0	0	1	0	
4 WD TAYLOR				•	1			1	1/2	
5 RG WALKER	0	0	1/2	0	•	0	0	0	0	1/2
6 CP BOTHAM			1	1	•			1		
7 J TIMPERLEY			1	1		•		1		
8 V DILWORTH	0	0	0	0	0	0	0	•	1/2	1/2
9 RVH BAXTER			1	1/2	1			1/2	•	

2nd SCOTTISH OPEN TOURNAMENT

SEMI-FINAL

(Controller: Sections A & C - DM Livie)

(Controller: Section B - A Hind)

SECTION A 1 2 3 4 5 6 Pts

1 D SALTER	•						
2 CJ LENNOX		•					
3 A HIND			•				
4 J McLEAN				•			
5 A MacMILLEN					•		
6 R GIULIAN						•	

SECTION B 1 2 3 4 5 6 7 Pts

1 C McKay	•						
2 P McCONNELL		•					
3 J McLEAN			•		1/2		
4 DM LIVIE				•			
5 T THOMSON			1/2		•		
6 N MITCHELL						•	
7 MF PEARCE							•

SECTION C 1 2 3 4 5 6 Pts

1 A NUKHERJEE	•						
2 J COPLEY		•					
3 CR BEECHAM			•				
4 GE WALLWORK				•			
5 R STOKES					•		
6 A McMILLEN						•	

Overseas Subscribers

Subscription for one year's editions of the Scottish CCA magazine can be obtained from the Editor for £7 p.a. (inclusive of postage).

Section 1	1	2	3	4	5	6	7	8	9
1 WD TAYLOR	•			1					
2 V HARPER		•		0	1			1	
3 DR CUMMING			•			1/2			
4 A MORRIS	0	1		•	1		1	1	
5 D FLEMING		0		0	•				
6 GD PYRICH			1/2			•			
7 SR MITCHELL				0			•		
8 F ANDRES		0		0				•	
9 A MacMILLAN									•

Section 3	1	2	3	4	5	6	7	8	9
1 D SALTER	•								1
2 GE WALLWORK		•							1
3 R MONTGOMERY			•			1			1
4 IF REEMAN				•					1
5 SF DRUNSFIELD					•	1			1
6 F PARK			0		0	•		0	1
7 MA HAY							•		1
8 I MACKINTOSH							1	•	1
9 JS CAIRNEY	0	0	0	0	0	0	0	0	•

Section 2	1	2	3	4	5	6	7	8	9
1 GR NIXON	•	0	1						
2 AD ARCHIBALD	1	•							
3 SM YOUNG	0		•						
4 AD KILGARIFF				•					0
5 JM HERRIES					•				1
6 AGE BIRD						•			
7 MF PEARCE							•		
8 RF TURNER								•	
9 G LYBURN			1	0					•

SCOTTISH OPEN CONTROLLER:

D.M. Livie,
58 Elmore Avenue,
Sinnhill,
GLASGOW G44 5AY.

"FERNSCHACH"

This excellent monthly magazine contains official results as well as information about ICCF events. Although it is predominantly published in German, there are plans in 1991 to include more news and articles in English and other languages. Fernschach has been given a fresh image and contains many interesting games which are well annotated. It is indispensable for the keen international CC player and can be obtained through Chess Suppliers (Scotland).

Chess Archives

One year's subscription = DM 40

Free sample copy provided on request from:

Das Schach-Archiv,
Weidenbaumsweg 80,
Postfach 800 845,
2050 Hamburg 80,
Germany,
Tel. (040) 7 24 42 82



BITS 'n' Pieces



by

Ian Marks

CC should be an ideal medium for the discovery of opening novelties: plenty of time for reflection, no clock ticking - and you can move the pieces! So it's all the stranger that the "books" more often than not turn a blind eye to the postal game.

The following game is a stunning example of what can be found if one is prepared to look. It first appeared in the May/June 1990 issue of the excellent US magazine THE CHESS CONNECTION (which currently seems to have run into "production difficulties", alas) and has only recently found its way into NEW IN CHESS (Yearbook 21, p.79). It's a beaut!

1989 TCC Liberty Open

White: Gary Eubanks
Black: Eddie Hurt

Ruy Lopez C89

1 e4 e5

Is this position =+? No, seriously. Point being that, having to move, White now

has to reveal his hand to a certain extent. Black therefore should have the "advantage" of having to REact to White's decision. In similar vein, Fischer once pronounced the position after 1 Nf3 Nf6 2 g3 g6 3 Bg2 Bg7 4 0-0 0-0 5 d3 d6 to be in Black's favour, since he can now either mimic White or diverge after 6 c4 or 6 e4. Presumably RJF thought he could outplay anyone from equality.

2	Nf3	Nc6
3	Bb5	a6
4	Ba4	Nf6
5	0-0	Be7
6	Re1	b5
7	Bb3	0-0
8	c3	d5

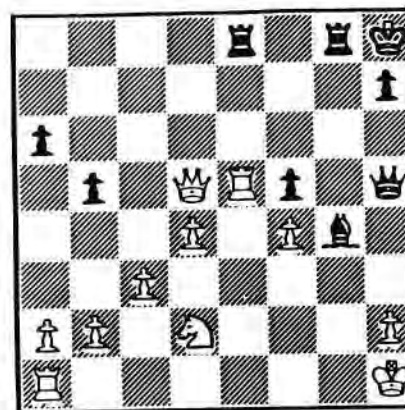
The Marshall Counterattack, named after the well-known American GM, Frank J. Counterattack.

9	exd5	Nxd5
10	Nxe5	Nxe5
11	Rxe5	c6
12	d4	Bd6
13	Re1	Qh4
14	g3	Qh3
15	Be3	Bg4
16	Qd3	f5
17	f4	g5

18	Qf1	Qh5
19	Nd2	Rae8
20	Qg2	gxf4
21	Bxd5+	cxd5

Still awake?

22	Qxd5+	Kg7
23	Bxf4	Bxf4
24	gxf4	Kh8
25	Re5	Rg8
26	Kh1	



We're still deep in the books (ECO C89, note 162), which probably explains why White's thinking time so far amounted to 0 days. Wonder how long he took for the REST of the game!?

26 Rd8!!

In the above note, Euwe analyses 26 ... Bh3 27 Rxe8 Qxe8 28 Qe5+ Qxe5 29 dxe5

Rg2 30 Rd1 ±. Hurt explains that he found HIS move "in sheer desperation". Necessity is the mother of invention!

27 Qb7

The White Q can't leave the long diagonal. The game is over.

27	Rd7!
28	Qc6	Rd6!
	0	1

Hurt analyses the win out as follows: (A) 29 Qb7 Bd1 (threatening mate with 30 ... Qxh2+ 31 Kxh2 Rh6+) 30 Re3 Rdg6 31 h3 Re6 32 Rf3 Rh6 33 Kh2 Qg4, mating; (B) 29 Qg2 Bh3 30 Qf2 Bg2+ 31 Qxg2 (31 Kg1 Qh3 - or 31 ... Qxh2+) Rxg2 32 Kxg2 Rg6+ 33 Kf1 (33 Kh1 Qg4) Qxh2 34 Ke1 Rg1+ 35 Nf1 Qg2 36 Re2 Qxf1+.

Moral: If you don't want to be jumped, don't play 1-o-n-g book lines.

"Books, I don't know what you see in them,"

Peter Ustinov



NEW BOOKS

by Alan Borwell



Batsford

4 Fitzhardinge Street,
London, W1H 0AH,
Tel. 071 486 8484

**The Ruy Lopez for the
Tournament Player**
by Gary Lane
Figurine notation, paperback £12,95

This is a new book on one of the oldest of chess openings, which still enjoys tremendous popularity.

The 242 pages are well organised, although the absence of a detailed index of variations is a weakness. If you do not know the name of a variation, then it could take some time to find it!

The book is comprised of illustrative games, with extensive analysis and copious cross-references to other relevant games. An index of main games would have been useful. There are also some notable omissions, such as the Steinitz Defence Deferred - Siesta Variation, against which Michael Adams came badly unstuck in a recent game in France (see P22)

However, for the OTB tournament player, it provides an insight into the more popular lines and is a commendable first book by this young English IN.

**Queen's Indian Defence
Kasparov System**
by Mikhail Gurevich
Figurine notation, paperback £10,99

This excellent new book concentrates on one specific main variation of the QI Defence. The move 4 a3, known as the Kasparov System, is an aggressive attempt to prevent Black's normal plans in playing the Queen's Indian.

The conceptual presentation is excellent with instructive comment and the reader is set problems to solve.

A simple variations index and one of games references is useful. The diagrams are rather "black" but still clear enough.

Recommended for CC players likely to play or oppose the Queen's Indian Defence in serious competition.

**How to Play
The French Defence**
by Shaun Taulbut
Figurine notation, paperback £8,99

First published in 1983, this new edition includes an additional chapter on more recent ideas.

This book in the "How to Play" series is ideal for anyone thinking about taking up this defence. It explains the key concepts of the different variations and is very "readable". More advanced CC players will need to supplement the analysis with more up-to-date games references.

Winning with the Nimzo-Indian
by Raymond Keene
Figurine notation, paperback £12,95

Another specialised opening book which uses complete games to illustrate the different variations of this popular and dynamic defence to 1 d4.

The games references are up-to-date and the well-known English GM author explains some of the theory and also provides historical references. This joins several good books which have been written on this defence.

The Sicilian Scheveningen
by Garry Kasparov and
Alexsander Nikitin
Figurine notation, paperback £12,95

This is the third edition of a superb book on the most flexible and profound variations of the Sicilian Defence. World Champion, Garry Kasparov, has used this defence successfully throughout his impressive chess career.

This is a substantial and comprehensive openings book with 236 pages of instructive analysis of all of the main lines.

**How to Play
The English Opening**
by Nigel Povah
Figurine notation, paperback £9,99

This is the second edition of a highly successful book first published in 1983, incorporating more recent games and material.

It explains the basic strategies and covers all of the main variations. The flexibility of opening with 1 c4 is ideal for players who enjoy a subtle manoeuvring game with the white pieces, rather than more direct lines arising from 1 e4 or 1 d4.

The Complete Grünfeld
by Alexei Suetin
Figurine notation, paperback £14.95

A completely new and important book which fills a major gap in chess openings literature.

Over 300 pages of comprehensive analysis and comment on all of the main variations of this very popular and double-edged opening.

Translated by John Sugden from the famous Russian GM's manuscript, the games references are up-to-date, including some 1990 material



Batsford

4 Fitzhardinge Street,
London, W1H 0AH,
Tel. 071 486 8484

Example of future print for games in the Magazine (sorry Michael, this is one of your rare losses!)

Adams - Piket

1.e4 e5 2.♟f3 ♘c6 3.♙b5 a6
4.♙a4 d6 5.c3 f5 6.exf5
♟xf5 7.0-0 ♙d3 8.♞e1 ♙e7
9.♞e3 e4 10.♙e1 ♙g5 11.
♟xd3 ♙xe3 12.♙b4 ♟xf2+ 13.
♟xf2 ♖h4+ 14.♟g1 ♙h6 15.
♟f1 ♙g4 16.♟f4 ♞f8 17.♟g3
♞f1+ 18.♟xf1 ♙xh2+ 19.♟xh2
♖xh2 0-1



MAXWELL MACMILLAN CHESS

**Development of a Grandmaster
"Michael Adams"**
by Bill & Michael Adams
Figurine notation, paperback £7.95

An outstanding and original book.

It traces the development of a youngster from learning the moves to becoming the youngest ever British Champion and youngest GM in the World.

Bill Adams writes a superb human chess biography and his son Michael comments and annotates 50 delightful games. As witnessed on his recent visit to Scotland, Michael is a credit to his parents and to the emerging younger generation of chess players.

From its attractive cover to its excellent index, this is a splendid book which should inspire every father to encourage their offspring to succeed in chess (and life!)

Dynamic Chess Strategy
by Mihai Suba
Figurine notation, paperback £7.95

An instructive book on strategy by the Romanian GM who has resided in England since 1988. Mihai Suba is an inventive chess player whose games are always interesting from opening to endgame.

Any correspondence player, who is looking for possible new ideas in the openings, should benefit from playing through the 36 illustrative games in this book.

Play the Queen's Gambit
by D. Marovic
Figurine notation, paperback £14.95

A very welcome addition to the openings bookshelf with an excellent index of openings/games references.

Its 370 pages are packed with illustrative games in all of the main variations. As would be expected in a book covering this long-standing mainstream opening, games included span many decades. It should be noted that the QG Accepted is not covered but the Slav and Semi Slav variations are included.

Winning with the Schliemann
by Mikhail Tseitlin.
Figurine notation, paperback £8.95

The Russian GM author is an expert in this variation of the Ruy Lopez, an ideal weapon for the enterprising player with the black pieces. Its 155 pages contain many recent illustrative games, including several from CC tournaments.

If you are looking for double-edged games, avoiding the lengthy book variations of many Ruy Lopez lines, then this could be the book for you!

**How to be a Complete
Tournament Player**
by Edmar Mednis
Figurine notation, paperback £7.95

This 111-page handbook contains useful advice on the selection of openings, preparation for tournaments, managing your time, analysis of adjourned games, etc. There is a suggested Training Programme designed to help you achieve a significant improvement in your chess ability.



MAXWELL MACMILLAN CHESS

ICCF INDIVIDUAL TOURNAMENTS

Members of the Scottish Correspondence Chess Association are eligible to compete in ICCF promotion tournaments, which are structured to encourage participation by C.C. players of all standards. You can choose between World or European-only sections ranging upwards from third class, second class to first class. Higher Class and Master Class events require evidence of C.C. playing strength with entries.

Tournaments are organised in 7 or 15 player sections, except World III Class which is 7-player only. Normally they begin as soon as entries have been received from seven different countries, although sometimes there are two players from the same country. After you have selected a Class, you need to win a Section to be promoted.

The entry fee of £4 (for 7-player groups) or £5 (for 15-player groups) should be made payable to Scottish CCA and sent to Mr. Philip M. Giulian, 10 Broomfield Avenue, Newton Mearns, Glasgow G77 5HR.

ICCF THEMATIC TOURNAMENTS

Tournaments for sections of 5-7 players, two games against each opponent. The top two players qualify for each final. The entry fee is £4 per group (payable to Scottish CCA) to: Mr. Philip M. Giulian, 10 Broomfield Avenue, Newton Mearns, Glasgow G77 5HR.

TT 3/92 RUY LOPEZ - SMYSLOV

1 e4 e5 2 Nf3 Nc6 3 Bb5 a6
4 Ba4 Nf6 5 0-0 Be7 6 Re1 b5
7 Bb3 0-0 8 c3 d6 9 h3 h6
10 d4 Re8 11 Nbd2 e6
Entries close 10/1/92
Start 1/3/92

TT 4/92 GROB'S ATTACK

1 g4
Entries close 1/2/92
Start 1/4/92

TT 5/92 QUEEN'S INDIAN

1 d4 Nf6 2 c4 e6 3 Nf3 b6
4 g3 Bb7 5 Bg2 Be7 6 0-0
0-0 7 Nc3 Ne4
Entries close 1/3/92
Start 1/5/92

TT 6/92 SICILIAN - NIMZOWITSCH

1 e4 c5 2 Nf3 Nf6 3 e5 Ng4
4 h3 Nh6
Entries close 1/4/92
Start 1/6/92

GAMES SECTION - EDITOR

This will be the last Games Section edited by Douglas Bryson, who is retiring after almost five years.

We are greatly indebted to him for undertaking this role and for all of the interesting comments he has contributed - many thanks Douglas! During the period he has been Games Editor, Douglas has had great success as a correspondence chess player. He became an International Grandmaster in 1986 and, since then he has maintained a very high standard, with outstanding performances in international team and individual events. He is a dedicated Scotsman and we look forward to reporting many more successes for him in international individual tournaments and for Scotland in the forthcoming Olympiad Final.

Our new Games Editor will be George Pyrich, who is an active CC player both in Scottish CCA events and at international level. Currently, he is doing very well in Section "B" of our International Tournament, where we hope he might still achieve the IM title.

All game scores sent to Tournament Secretaries will be forwarded to George so, if you have played an interesting game, you could receive a request from him to annotate it for the magazine!!

George will welcome games for publication and it would be helpful if they could be sent to him in "magazine format". The main requests are that:

1. they are in algebraic notation
2. the notes use words rather than Informator symbols (which are not understood by all of our readers)
3. diagrams are provided for the appropriate positions (capitals for White, ringed pieces for Black).

Please send games, preferably with annotations, to Mr. G.D. Pyrich, 53 Dunnikier Road, Kirkcaldy, Fife, KY1 2EL.



GAMES SECTION

Selected by Douglas Bryson

Please send games (preferably annotated) to Games Editor:

George Pyrich,
53 Dunnikier Road,
Kirkcaldy,
Fife, KY1 2RL.



Has the SCCA looked into the threat of computers to correspondence chess? The Mephisto range are claiming grades of 2300+. If you own one of these machines there must be a great temptation to input your intended move "just to see" what the computer thinks. Even international players who are probably still better than the top computers would benefit from the blunder checking ability. [Editor - we would welcome comments from members on this topic!]

Andrew Muir has scored well on top board for Scotland in the European Team Championship without recourse to the silicon chips.

Andrew writes, "Scotland are unlikely to qualify for the final stages but I scored 7/8 against a strong field (average ICCF rating 2440) for a tournament performance of ICCF 2780. Although ICCF ratings are undoubtedly inflated, this compares well with some of my best over-the-board performances (eg. Leeds Quickplay 7½/11 - 2570). Two of my opponents are postal IMs and I beat my strongest opponent in the following game:

IV European Team Champs.

Nimzo Indian E43

White: A.J. Muir

Black: B Sorensen (DK) 2575

1	d4	Nf6
2	c4	e6
3	Nc3	Bb4
4	e3	b6

5	Bd3	Bb7
6	Nf3	Ne4
7	0-0	f5
8	d5!	

I believe this to be the critical test of Black's opening. Two games in the 1991 OTB Scottish Championship went: Muir-Farrell, 8 ... Bxc3 9 bxc3 Nc5 10 Re1 Qf6 11 Qc2 0-0 12 e4 fxe4 13 Bxe4 Nxe4 14 Qxe4, slightly better for White. Muir-Beaton, 8 ... Bxc3 9 bxc3 Na6 10 Ba3 Nac5 11 Bxe4 fxe4 12 Nd2 0-0 13 Bxc5 bxc5 14 Rb1 Rb8 15 Nxe4 ±.

Black usually doesn't grab a pawn here but just tries to control the c5 square.

8	Bxc3
9	bxc3	Na6
10	Nd4	Nac5
11	Bxe4	fxe4
12	Ba3	0-0
13	Rb1	Rb8?

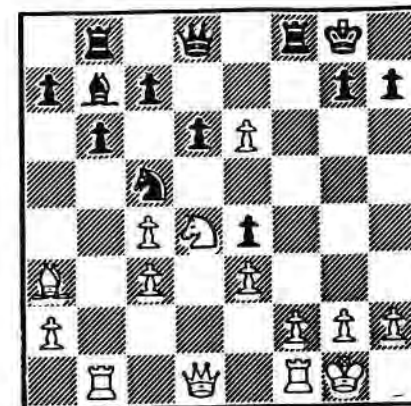
I felt 13 ... Qe7, although looking risky, is better.

14 dxe6!

A surprising anti-positional move.

14 d6

It looks now as if White's e-pawn will fall, leaving him with a bad pawn structure.



15 Bxc5! dxc5

If 15 ... bxc5 16 Rxb7 Rxb7 17 Nc6 Qe8 18 Qd5 with good play.

16 Nb5 c6

If 16 ... Qe7 17 Qd7!

17 Nd6 Ba6
18 Qa4!

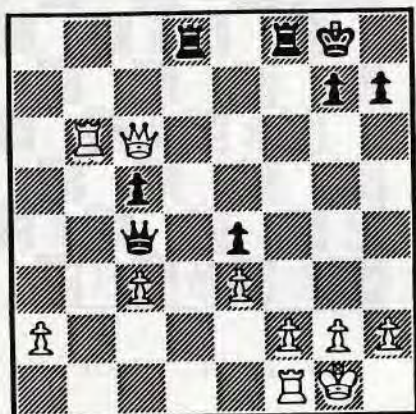
Stronger than 18 Nxe4 Bxc4 19 Qxd8 Rxd8 20 e7 Rd5 and White's e-pawn falls.

18	Qxd6
19	Qxa6	Qxe6
20	Qxa7	Qxc4

21 Rxb6 Ra8
22 Qd7 Rad8

If 22 ... Rxa2 (threatening
23 ... Qxf1+ 24 Kxf1 Raxf2+
25 Ke1 Rf1+ mate) 23 h3!

23 Qxc6



23 Rxf2!?
24 Kxf2

Not 24 Rxf2?? Rd1+.

24 Rf8+
25 Kg3 Qxf1
26 Qxc5

I preferred a passed c-pawn
to a passed e-pawn (Qxe4)
in the endgame.

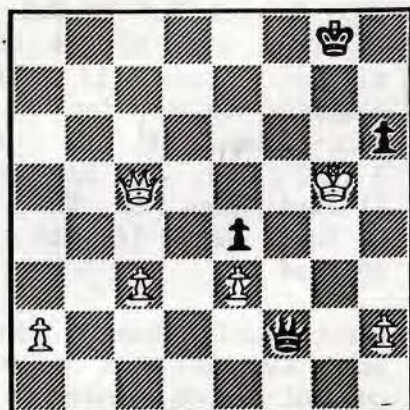
26 Rxf3+!?

Black continues in his
sacrificial ways.

27 gxf3 Qxf3+
28 Kh4 Qf2+
29 Kg5 h6+

It looks as though Black has
perpetual now, but ...

30 Rxb6! gxh6+



31 Kg6!

Instead of a long queen-
ending coming about, White
wins more material by
mating threats.

31 Qg2+
32 Kxh6 Qxa2

If 32 ... Qxh2+ 33 Qh5
(threat Qe8 mate) Qb8
34 Qg6+ Kf8 35 Qg7+ Ke8
36 Qg8+ wins.

33 Qc8+ Kf7
34 Qf5+ Kg8
35 Kg6! Resigns

36 Qc8 is threatened. If
36 ... Qc4 37 h4 Qc7 38 Qe6+
Kf8 39 Qf6+ Kg8 40 h5 Qg3+
41 Qg5 Qd6+ 42 Kf5+
followed by swap of queens.



SCCA President Alan Borwell
looks set for a rating jump
judged by recent results.
Here are 3 games well-
annotated by Alan.

European Team Tourney
Preliminaries 1988-91

Queen's Indian Defence E12

White: M Krecmer (CSR) 2440
Black: A P Borwell (SCO) 2280

1 d4 Nf6
2 c4 e6
3 Nf3 b6
4 a3 Bb7
5 Nc3 d5

Not my favourite way of
playing QI (or NI) Defence
but necessary in the
variation to prevent White's
d5!

6 cxd5 Nxd5

This aims to keep the
position open for more
active play than 6 ... exd5.

7 Qc2 Be7

More popular nowadays is
7 ... Nxc3.

8 Bd2

With the idea of recapturing
on c3 with the bishop,
allowing the Q to support
e4.

8 0-0
9 e4 Nxc3
10 Bxc3 c5
11 dxc5

If 11 Rd1 cxd4 12 Nxd4 Qc8
13 Be2 Nc6 14 Nb5 Rd8
15 0-0 a6 and Black should
equalise.

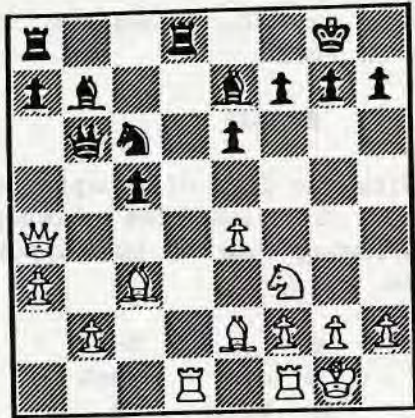
11 bxc5!?

A suggestion by I. Faragó
(Hun). It doesn't look very
pretty but it keeps lines
open and is looking to
establish an outpost on d4.

12 Be2 Nc6
13 Rd1 Qb6
14 0-0 Rfd8
15 Qa4!

Overseas Subscribers

Subscription for one year's
editions of the Scottish CCA
magazine can be obtained from
the Editor for £7 p.a.
(inclusive of postage).



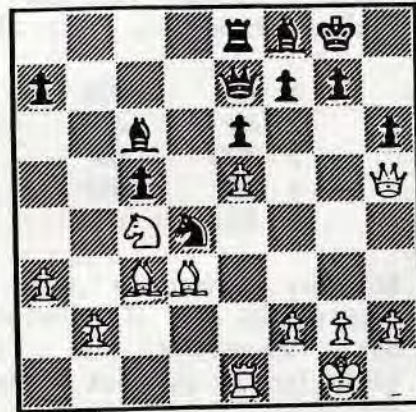
18 Bd3 Bc6
19 Qd1 Re8!

With thoughts of e5 and maybe eventually Re6/g6 but, mainly, to encourage White to play e5!?

20 Qh5 Qb7
21 Re1 Bf8
22 Nc4 Qe7

Now Black really does intend e5, securing d4 and providing more space.

23 e5!?



Black has achieved his objective but is it really any advantage?

23 g6
24 Qg4 Rd8!
25 Be4 Bxe4
26 Qxe4 Qd7!

Good move. It delays Black's Nd4 (because of Ba5) and could enable a quick shift along the rank to the K-side after e5.

15 h6
16 Rd2?

Probably a mistake but it was not clear how White should continue. If 16 e5 Rxd1 17 Rxd1 Rd8 and White's bishops are not ideally placed.

16 Rxd2
17 Nxd2 Nd4

Excellent, enabling more space for manoeuvre, although White probably still has a small advantage.

27 Qf4 Qa4

Probably overlooked by White. It contains some nasty threats with discovered attacks on his Q.

28 Qf6 Rd7
29 Bxd4?!

This is dubious but his position is difficult with disjointed pieces.

29 cxd4

If 29 ... Qxc4 30 Bc3! (not 30 Be3? Qe2!!)

30 Nd6

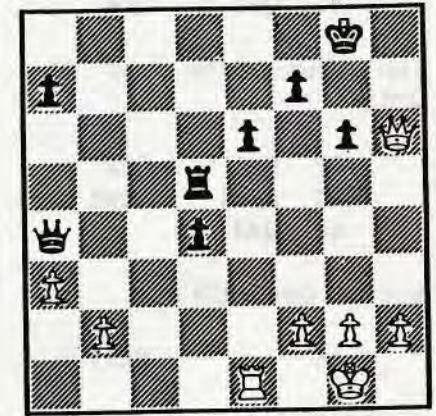
I expected 30 Nd2 when I had the choice of either Qa5 or Qc2, eg. 30 ... Qa5 31 Nf3 g5 Δ Bg7, or 31 Rd1 Qa4 32 Rcl Rc7!

Probably more forcing would have been: 30 ... Qc2 31 Ne4 d3 32 Qf3 d2 33 Nf6+ Kh8 34 Rd1 Rc7 Δ Qxd1+, or 31 ... Qxb2 32 Qf3 Be7 33 Nf6+ Bxf6 34 exf6 d3 35 Qa8+ Kh7 36 Qf8 Qxf6.

This move loses the KP but gains Black KRP in return - not an equal exchange!

30 Bxd6
31 exd6 Rxd6

32 Qf4 Rd5
33 Qxh6



33 Qc2!

Looks like a ghastly blunder because of 33 Rcl (Δ Rc8 mate) but 33 ... d3 34 Rxc2 dxc2 and Black wins!

34 Qc1 d3
35 Kf1

Best. White defends resourcefully and careful play is needed to convert into a Black win.

35 Qa4
36 Qd2 e5
37 f3 f5
38 Qh6 Qa6!

Both defensive and offensive.

39 Qd2 Rc5

40 Rd1 e4
41 Qe3 Qc4

The alternative was 41 ... Qc6.

42 Ke1 Qc2
43 fxe4 fxe4
44 Qd2

Not 44 Qxe4 d2+.

44 Kg7!

A timely advance to support the advanced pawns.

45 Qxc2 Rxc2
46 Rd2 Rc1+
47 Kf2 Kf6
48 Ke3 Ke5
49 Rf2 Rc2!

A neat finish. Just when the White rook finds space to advance, it has to protect against 50 ... Re2 mate.

White resigns 0-1

If 50 Rxc2 dxc2 51 Kd2 Kd4 52 Kxc2 Ke3 Δ Kf2/e-pawn=Q. If White does not capture 52 Kxc2, then Black Queens to c-pawn and follows up with the same manoeuvre.

Although not matching Andy Muir's superb score on Board 1, I was happy to achieve

4½/8 on Board 2, despite losing one game from what appeared to be an overwhelming position. This also cost me the extra point which was needed to reach the IM title norm. C'est la vie!!



Scottish CCA Magazine
Tourney, Section A, 1990/1

White: J Hartung-Nielsen (Den) 2495
Black: A P Borwell (Sco) 2295

Queens Gambit Accepted D26

1 d4 d5
2 c4 dxc4

My first postal tournament
QGA!

3 Nf3 Nf6
4 e3 e6
5 Bxc4 a6
6 0-0 b5

Very ambitious. Andrew Martin comments that this "is the move order for Black players who must win"! I couldn't find many reference games, so I thought I would give it a whirl.

7 Bd3 c5

8 dxc5

Arthur Prystenski (Can), in the same event, played 8 e4 cxd4 9 e5! Nd5?! 10 Nxd4 g6 11 Nc3 and Black is already in difficulty, especially on the dark squares. I tried 11 ... Bg7 12 Nxd5 Qxd5? (overlooking White's 15th move) 13 Re1 Bb7 14 Be4 Qd7 15 Nxe6!! and Black is lost. Maybe 13 ... Qd7 14 Be4 Ra7 15 Be3 Rc7 is just about tenable but it doesn't look very hopeful.

8 Bxc5
9 e4 Nc6
10 a3 Qc7
11 b4



A difficult decision now - which way should the bishop go? The attacking attractions of the g1/a7 diagonal are counter-

balanced by the defensive requirements on the a1/h8 diagonal!

11 Bd6
12 Ra2!?

Looks a bit artificial but could be very good if Black plays passively.

12 Bb7
13 Rc2 Ng4!

A good plan to secure full control of the e5 square.

14 h3 Nge5
15 Bb2 Rd8

With hidden threats against the White Q. therefore....

16 Rd2

Moving the same piece three times in the opening - and a rook as well!?

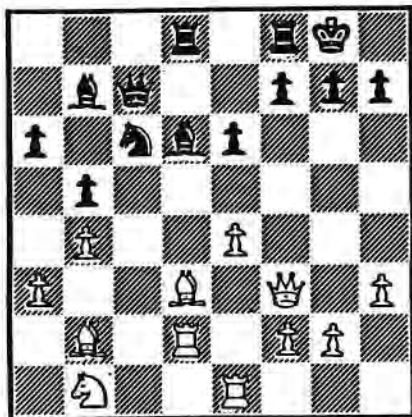
16 0-0

Phew, I had doubts if I would even get the chance to do this!

17 Re1

Probably not the best as the development of the Knight on b1 becomes a problem.

17 Nxf3+
18 Qxf3



18 Be5

A difficult choice and maybe not the best. The more thematic 18 ... Ne5 could have created more winning chances, eg. 19 Qe2 Nxd3 20 Rxd3 Bh2+ 21 Kh1 Rxd3 22 Qxd3 Rd8 23 Qc3 Qxc3 24 Nxc3 Be5 and Black's two Bishops and control of the d-file look promising. If 19 Bxe5 Bxe5 and White has still to find a way to effectively develop his QN, eg. 20 Rc2.

19 Bxe5 Nxe5
20 Qe2 Nxd3
21 Rxd3 Rxd3
22 Qxd3 Rd8

Black has certainly achieved more than equality but it is not clear how to take advantage of White's undeveloped QN and the open files. Black would be winning if the Q-side pawns were on the opposite colours!

23 Qc3 Qf4
24 f3 h6
25 Qc1! Qg3
26 Qe3 Draw agreed
* *

White hopes to play Nd2/b3 /c5. In the meantime, Black cannot easily get his Bishop into an active position, eg. e5/Bc8/Be6/Bc4 is very laborious, although Bc8 does threaten Bxh3. Perhaps the best continuation would have been 26 ... e5 27 Nd2 Bc8 28 Kh1 Be6 29 Rc1 and the position looks about even. However, a draw with Black against a player rated 200 points higher isn't too bad!



Please send games (preferably annotated) to Games Editor:

George Pyrich,
53 Dunnikier Road,
Kirkcaldy,
Fife, KY1 2RL.

Scottish CCA Magazine
Tourney, Section A, 1990/1

White: A P Borwell (Sco) 2295
Black: O Rennemo (Nor) 2425

Nimzo-Indian Defence E39

1 d4 Nf6
2 c4 e6
3 Nc3 Bb4
4 Qc2

The Capablanca Variation of the NI which threatens an early e4 or the recapture on c3 with the Queen to avoid disruption of the Q-side pawns.

4 0-0

Also popular is 4 ... c5 5 dxc5 0-0 6 a3 Bxc5 which leads to interesting positions.

5 a3 Bxc3+
6 Qxc3 d6

Keeping options open for either e5 or c5.

7 Bg5 Nbd7
8 e3

White has developed his black-squared Bishop outside the pawn centre, often a problem with the NI.

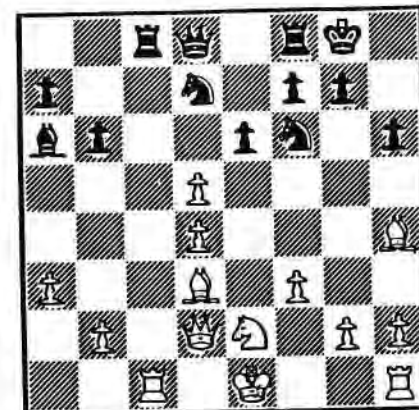
8 b6
9 Bd3 h6
10 Bh4 Bb7
11 f3

Another feature of this variation for White is the build-up in preparation for e4. Black must play actively to avoid being steamrollered in the centre.

11 c5
12 Ne2 Rc8

If 12 ... cxd4 13 exd4 Rc8 14 b4 e5 15 0-0 b5 16 c5! as in Gulko-De Firmian where White stands better. The deferral of the pawn exchange makes it advisable for White to move his Q from the c-file.

13 Qd2 Ba6
14 Rc1 cxd4
15 exd4 d5
16 cxd5



16 Rxc1+

If 16 ... Bxd3 17 dxe6 Bxe2
18 Rxc8 Qxc8 19 exd7 Qxd7
20 Bxf6 gxf6 21 Kxe2 with
advantage.

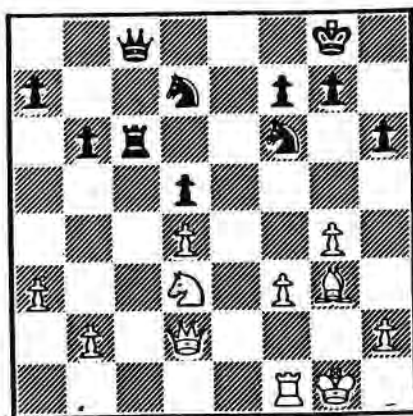
17 Nxc1 Bxd3
18 Nxd3 exd5
19 0-0 Qb8
20 Bg3

Maybe better here is 20 g4
followed by Bg3, enabling a
quicker pawn advance on the
K-side.

20 Qb7
21 Bd6

If 21 Rc1 Rc8 22 Rc3 Nh5
23 Bd6 Rc6! with near
equality!

21 Rc8
22 g4 Rc6
23 Bg3 Qc8



24 Rf2!

This allows Black to play
his rook to the back rank
but this becomes a liability
with all White's major
pieces having moved forward!

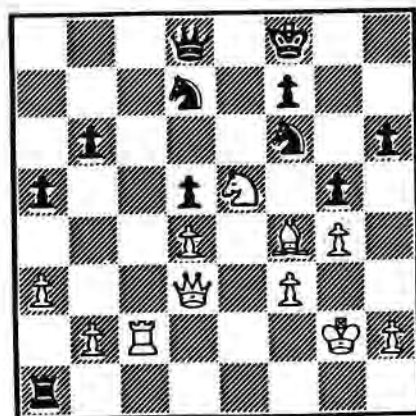
24 a5
25 Kg2 Kf8
26 Ne5!

Having secured his King,
White can play this key N
move so that Black cannot
exchange it without losing
his d-pawn.

26 Rc1

Not much choice, but e6
would have been better. He
probably overlooked White's
next three moves which
really consolidates the
advantage.

27 Bf4! Ra1
28 Qd3! g5
29 Rc2 Qd8



A lovely position now for
White. Black could not try
29 ... Qxc2 because 30 Qxc2
gxf4 31 Qc8+ Ke7 32 h4 Δ g5
etc.

30 Nc6 Qe8
31 Bd6+ Kg7
32 Ne7

This allows Black's rook
back into the game. Maybe
32 Re2 would be more
accurate as White does not
intend to win Black's Q for
R and N next move.

32 Re1
33 Nf5+

Playing to maintain and
increase the pressure rather
than take the immediate
material gain by 33 Rc8
Rxe7 34 Rxe8 Rxe8. I did
not like the look of 35 Qf5
Re6 when the pawn balance
and secure placing of
Black's pieces seemed to
make the breakthrough quite
difficult. After 36 Be5
Black can play 36 ... Nxe5
37 dxe5 Nd7 because of
38 h4 Nxe5 39 hxg5 hxg5
40 Qxg5+ Ng6. White cannot
play 41 Qxd5 because of
Nf4+ but is better after
41 Kg3. On reflection after
the game, maybe 33 Rc8 was
the best continuation!?

33 Kh8

Forced. He must keep off
the white squares.

34 Nxb6

At first sight, this looks
doubtful. Other candidate
moves were Kf2 or Bg3 but
the black rook can retreat
to e6 to assist in his
defence. The move played
gained a pawn, loosened g5
and was more forcing.

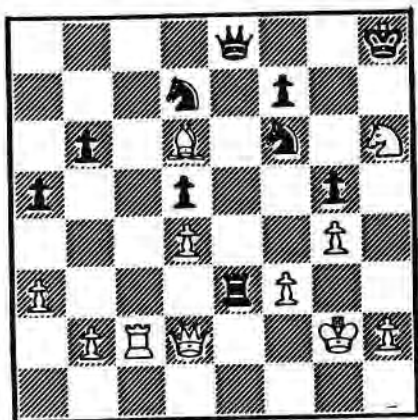
34 Re3

I had carefully calculated
all variations here except
Black's next move which I
dismissed too quickly!

35 Qd2

I thought this quiet move
would be conclusive as 35 ...
Re6 36 Qxg5 Rxd6 37 Nf5
wins. Obviously if 35 ...
Qe6 then 36 Nf5 R moves
37 Qxg5 wins. Other
possible squares for the
white Q were f5 and a6,
neither of which seemed as
good, eg. 35 Qf5 Re2+ 36 Kh3
Rxc2 37 Qxc2 Qe3 38 Nxf7+
Kg7 and Black threatens the
f and d-pawns and the white
N.

If 35 Qa6 (Δ Rc8) Kh7
 36 Nf5 Re1 37 Bg3 Rd1
 38 Re2 Qf8 39 Bd6 or h4 and
 White is much better but
 35 ... Qe6 36 Nf5 Re1 37 Bg3
 Rd1 38 Rc8+ Ne8 39 Nd6 Ndf6
 40 Be5 Kh7 41 Nxe8 Rd2+
 42 Kg3 Nxe8 43 Qa8 Qh6 and
 White is lost!



35 Rxf3!?

A nasty shock which is very nearly sound. I considered declining the offered rook with 36 Be5, which superficially looks good because 36 ... Nxe5 37 dxe5 and Black cannot retake on e5 with his Q because of the f7 fork. However, Black has 37 ... Rf4 38 exf6 Kh7 followed by Qe4+/Rg4+. If 36 Qxg5 Qe4 37 Nxf7+ Kh7 38 Qh4+ Kg6 39 Ng5 Qxc2+ 40 Kxf3 Qd3+ 41 Kg2 Qe2+ with perpetual check.

Therefore the rook must be taken, even though it concedes e4 and White must be very careful to avoid N forks himself!

36 Kxf3 Qe4+

Best. If 36 ... Ne4 then White can simplify with 37 Qe3 Nxd6 38 Qxe8+ Nxe8 39 Rc8 Ndf6 40 Nxf7+ and Nxc5 etc.

37 Kf2 Qg6

Also worth considering is 37 ... Qe6 threatening both Ne4+ and the white Bishop. However, White can move K or Q and Black cannot take on d6 because of the f7 fork.

38 Nxf7+!

The Knight must fall, so it might as well pick up another pawn.

38 Qxf7
 39 Rc8+ Kh7
 40 Qc2+

A nice way to avoid the fork, virtually forcing Black into a self-pin! Unfortunately 40 Qd3+ immediately leaves f2 unprotected.

40 Ne4+

41 Kg2 Qe6!

The best try. White must concede his g-pawn but now can secure his position and remain with the exchange advantage.

42 Bg3 Qxg4
 43 Qd3

Now this is safe. If now 43 ... Nf6 then 44 Rc7+ Kh6 45 h3 Qe6 46 Be5 Δ Qf3. Therefore he must move his King.

43 Kg7
 44 Qf3 Qe6

The exchange of Queens is hopeless for Black as his two Knights are no match for White's R and B.

45 Qh5 Resigns
 1 0

Perhaps a little premature. If 45 ... Ndf6 46 Rc7+ Kf8 47 Qh8+ Ng8 48 Qg7+ Ke8 49 Rc8+ Qxc8 50 Qxg8+ Kd7 51 Qxd5+ Ke7 52 Qxe4+ wins, or 45 ... Nxc3 46 Qxg5+ Kh7 47 Qh4+ Kg6 48 Qxg3+ Kh7 49 Qh3+ Qxh3 50 Kxh3 wins.

But 45 ... Nef6 46 Qxg5+ Kf7 still gives some hope, although the exchange and a pawn down. A possible continuation would be 47 Qd2 Qe4+ 48 Kg1 Qb1+ 49 Rc1 followed by Rf1 or Rel.

It was satisfying to win this game but disappointing that I could not find a more conclusive finish from around move 30. Any suggestions from readers would be appreciated!!



Regular contributor David Cumming likes the new Batsford book "The Complete Grünfeld" by Suetin. The Exchange variation is White's natural continuation.

SCCA Quartet Q155.

White: David R. Cumming
 Black: Stephen R. Mitchell

Grünfeld Indian Defence,
 Exchange Variation D87

1	d4	Nf6
2	c4	g6
3	Nc3	d5
4	cxd5	Nxd5
5	e4	Nxc3

6 bxc3 c5

Not necessary yet, usually Black keeps his options open with 6 ... Bg7, although ... c5 isn't a blunder here. The game transposed back to the main lines anyway.

7	Bc4	Bg7
8	Ne2	Nc6
9	Be3	0-0
10	0-0	cxd4
11	cxd4	Bg4
12	f3	Bd7
13	a3	Rc8
14	Rc1	e6
15	Qd2	a6
16	R(f)d1	Re8
17	e5	Na5
18	Ba2	Rxc1
19	Rxc1	Bb5
20	Ng3	Bc6
21	Ne4!	

Opening up the f-file nicely for White if Black takes, which he did.....

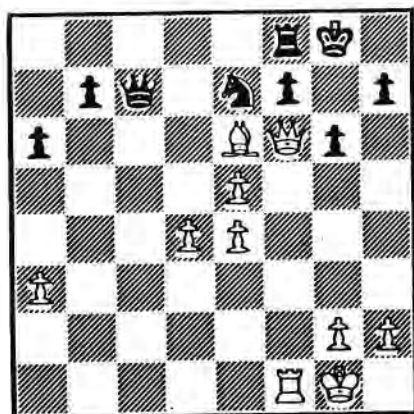
21	Bxe4
22	fxe4	Nc6
23	Rf1	Ne7
24	Qf2	Rf8
25	Bg5	Qd7
26	Bf6	Qc7?

Wasting a tempo.

27	Bxg7!	Kxg7
28	Qf6+	Kg8

29 Bxe6!

Getting rid of that obstructive e-pawn. Of course, Black could not play 29 ... fxe6?? because of 30 Qxf8+ mate!



29	Nc6
30	Bd5	Nxd4
31	Kh1!	

Important to remove any possible check on the a7-g1 diagonal from the black Queen, in order to get my impending attack going relatively undisturbed.

31	Qd7!
----	-------	------

This move stops 32 e6!!, which would have been the finish of Black's game there and then!

32 h4!

Dual purpose move, it prevents Black from achieving a back rank mate (or threats thereof, ie. hindering my coming attack by forcing me to defend with pieces), and also to fracture the pawn chevron around Black's King.

32	Ne6
33	h5	gxh5
34	Rf3	h4
35	Qxh4	Ng7
36	Rg3	

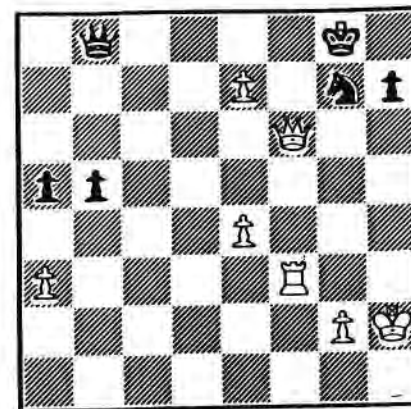
Important to pin the knight to the black King with my rook, and not 36 Rh3? (with the threat of mate), because of ... h5! which leaves Black with fair chances of survival!

36	Kh8
37	Qf6!	

Pinning the knight with the Queen this time, threatening mate on the next move, so forcing Black's response, which converted part of my advantage to a material one.

37	Rg8
38	Bxf7	b5
39	Bxg8	Kxg8
40	e6!	Qd1+
41	Kh2	Qh5+

42	Rh3	Qe8
43	e7	a5
44	Rf3	Qb8+



One last desperate try. If I had played 45 Rg3??, there then follows ... Qxg3!! 46 Kxg3 Nh5+!, forking my King and Queen, and following the knight's capture of my Queen, guarding the e8 square nicely so I can't successfully promote my e-pawn and Black would have consequently won. Good job I spotted that!

45	e5!	Resigns
----	-----	---------

The end was clearly in sight, eg. 45 ... Qxe5 46 Qxe5 Ne8 47 Rf8+mate; or 45 ... Qe8 46 Qf8+ Qxf8 47 exf8/Q+mate; or 45 ... h5 46 Qf8+ Qxf8 47 exf8/Q+, and the end wasn't far away!

Kasparov and Karpov set the opening trends for players worldwide. At least the first 18 moves of the next game are all theory. Whereas once hard work was required to locate game references from various books and magazines, another aspect of computer power is the openings database. Insert a disk and the machine spews out all the latest games in the specified opening. If you play main lines, you run a great risk of being hit by novelties months before they reach Informator. But certain openings are asking for trouble if you don't have the time or interest to keep up with the latest developments. Many years ago I managed to win an OTB game against someone who complained about juniors learning too much theory for him to keep up - he played the Najdorf Sicilian!

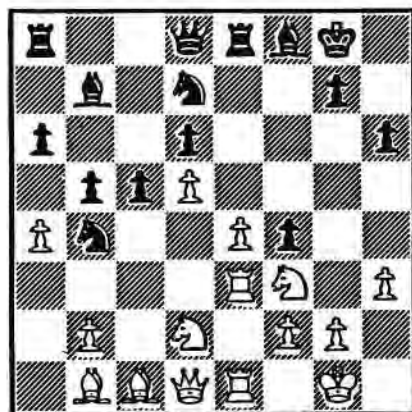
SCCA Handicap Tournament

White: David R. Cumming
Black: J. Peter Jack

Ruy Lopez, Zaitsev Variation
C92

1 e4 e5
2 Nf3 Nc6

3 Bb5 a6
4 Ba4 Nf6
5 0-0 Be7
6 Re1 b5
7 Bb3 d6
8 c3 0-0
9 h3 Bb7
10 d4 Re8
11 Nbd2 Bf8
12 a4 h6
13 Bc2 exd4
14 cxd4 Nb4
15 Bb1 c5
16 d5 Nd7
17 Ra3 f5
18 Rae3 f4!?



Up until now we had been following the 1990 World Chess Championship Final, Kasparov-Karpov, Game 20, which continued: 18 ... Nf6 19 Nh2 Kh8 and White won in brilliant style. At Amsterdam VSB Tournament, Karpov improved with 19 ...

Qd7, eventually drawn but Black was winning at one point.

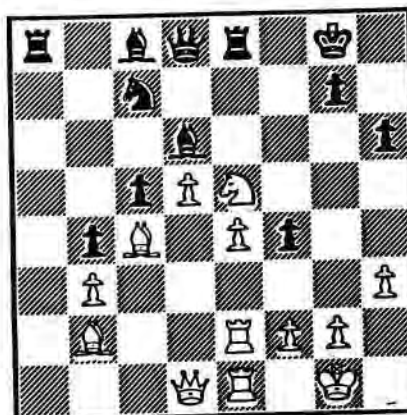
19 R3e2 Ne5!
20 Nxe5

Very necessary. I could not possibly allow ... Ned3! followed by ... c4!

20 dxe5
21 axb5 axb5
22 b3! Bd6
23 Bb2 Bc8
24 Nf3 Na6
25 Bd3 b4?

Bad move, which more-or-less plays itself into my plans for the game.

26 Bc4 Nc7
27 Nxe5!



27 Bxe5

28 d6+! Ne6

If 28 ... Be6 there then follows 29 dxc7 Qxc7 30 Bxe5 Qxe5 31 Bd5!, with advantage to White.

29 Bxe5 Ba6!
30 Rd2 Bxc4
31 bxc4 Qd7
32 Qg4 g5?

32 ... Qf7 or 32 ... Nf8 were much better alternatives here.

33 h4 Ra3?

Irrelevant and close to being a blunder, although Black could have kept the kettle boiling by playing 33 ... Nf8! 34 Qxd7 Nxd7 35 Ba1.

34 hxg5 hxg5
35 Bxf4! Resigns

Black could have tried 35 ... Qg7 here, giving White some difficulties, although correct play should win through for White in the end.

Please send games (preferably annotated) to Games Editor:

George Pyrich,
53 Dunnikier Road,
Kirkcaldy,
Fife, KY1 2RL.

Main lines seem to be popular with Frank Marshall's gambit getting GM approval via John Nunn. Since most players find attacking easier than defending, should White really volunteer to be attacked. There are many sensible alternatives like the Exchange variation 4 Bxc6, or deferred to 6 Bxc6 or an early 8 d4 by White.

SCCA Quartets Q158

White: Malcolm King
Black: Tom Tait

Ruy Lopez Marshall Attack
C89

- | | | |
|----|------|------|
| 1 | e4 | e5 |
| 2 | Nf3 | Nc6 |
| 3 | Bb5 | a6 |
| 4 | Ba4 | Nf6 |
| 5 | 0-0 | Be7 |
| 6 | Re1 | b5 |
| 7 | Bb3 | 0-0 |
| 8 | c3 | d5 |
| 9 | exd5 | Nxd5 |
| 10 | Nxe5 | Nxe5 |
| 11 | Rxe5 | c6 |
| 12 | Bxd5 | cxd5 |
| 13 | h3 | |

13 d4 is the normal move here. After 13 ... Bd6 14 Re3 Black can play 14 ... Qh4 or 14 ... f5.

- | | | |
|----|------|-------|
| 13 | | Bd6 |
| 14 | Re3 | f5 |
| 15 | Qf3 | Kh8?! |

Modern Chess Openings 9th(!) Edition gives 15 ... Bc7 16 d4 f4 17 Re2 Bf5 18 Nd2 Qh4. I played Kh8 simply to unpin and start the pawns rolling on the kingside.

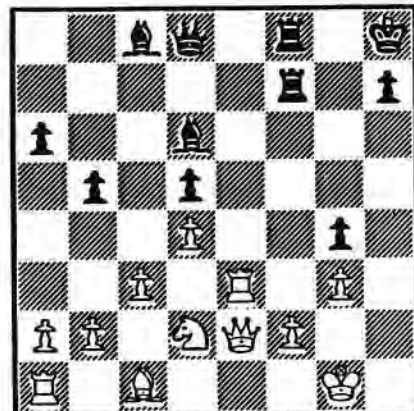
- | | | |
|----|----|----|
| 16 | d4 | g5 |
|----|----|----|

The string vest attack! (named after all the holes I've created in my own defence!)

- | | | |
|----|------|--|
| 17 | Nd2? | |
|----|------|--|

This move highlights one of White's problems in this line - the development of the bishop on c1.

- | | | |
|----|------|------|
| 17 | | g4 |
| 18 | hxg4 | fxg4 |
| 19 | Qe2 | Ra7 |
| 20 | g3 | Raf7 |



- | | | |
|----|------|------|
| 21 | b4 | Rxf2 |
| 22 | Qxf2 | Rxf2 |
| 23 | Kxf2 | h5 |
| 24 | Bb2 | h4 |
| 25 | Rh1 | h3 |
| 26 | Nb3 | Bf5! |

This move is stronger than a queen check.

- | | | |
|----|-----|-----|
| 27 | Nc5 | Qf6 |
|----|-----|-----|

She comes off her square at last.

- | | | |
|----|-------|------|
| 28 | Ke2 | Bxc5 |
| 29 | dxxc5 | Be4 |
| 30 | Rb2 | |

If 30 Rf1 Qxf1+ then h2.

- | | | |
|----|------|-----|
| 30 | | Bg2 |
| 31 | Kd3 | Kg8 |

Unpinning.

- | | | |
|----|-----|------|
| 32 | Kd2 | Qf2+ |
| 33 | Re2 | Qxg3 |
| 34 | c4 | Qf4+ |

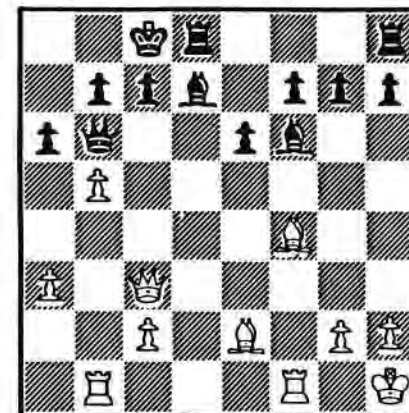
To put the King on the back rank answering Be5 with a check gaining a tempo.

- | | | |
|----|------|------|
| 35 | Ke1 | Qxb2 |
| 36 | cxb5 | Qg3+ |
| 37 | Kd2 | Qf4+ |
| 38 | Re3 | d4 |

Resigns



In the game between B. Geisler (DDR) and G. Heidermann (DDR) featured in Ian Marks' Bits 'n' Pieces article in Magazine No. 36, the following position was reached:



In the game, White played 21 Qb4 and won after a few more moves. Alan Shaw's Algerian opponent, M. Hannoun found a very interesting and dynamic continuation; viz. 21 bxa6 Bxc3 22 Rxb6! axb6 23 a7 wins. However, if 22 ... Bc6 23 axb7+ Bxb7 24 Rb1 and the conclusion is less clear.

Please send games (preferably annotated) to Games Editor:

George Pyrich,
53 Dunnikier Road,
Kirkcaldy,
Fife, KY1 2RL.

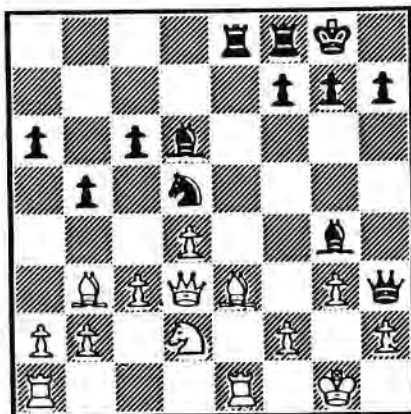
THEORY CORNER

(by Philip Giulian)

THE MARSHALL GAMBIT (C89)

One of the oldest gambit lines, the Marshall is still in frequent use today. Analysis of the variations seems as difficult as ever, but at the highest grandmaster level Black is more than holding his own. Meanwhile little-known correspondence player Kwolek is notching up the points with White.

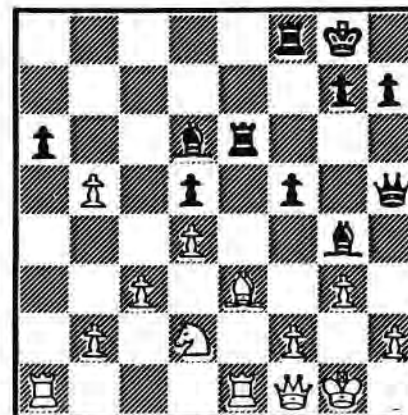
1 e4 e5 2 Nf3 Nc6 3 Bb5 a6 4 Ba4 Nf6 5 0-0 Be7 6 Re1 b5 7 Bb3 0-0 8 c3 d5 9 exd5 Nxd5 10 Nxe5 Nxe5 11 Rxe5 c6 12 d4 Bd6 13 Re1 Qh4 14 g3 Qh3 15 Be3 Bg4 16 Qd3 Rae8 17 Nd2



In this position, Black has been trying two moves recently:

I. 17 ... f5 18 Qf1 Qh5 19 f4 g5 (Kh8!?) 20 Qg2 Kh8 21 Bxd5 cxd5 22 Qxd5 Rd8 23 Qc6 gxf4 24 Bxf4 Bxf4 25 gxf4 Be2 26 Kh1 Rde8 27 Rg1 (not 27 Qg2 Re3 28 Qg5 Rd3 29 Qxh5 Bxh5 30 Nf1 Rg8 31 Ng3 Bf3+ 32 Kg1 Rd2 winning) 27 ... Qh4 and White is winning with Rg2 or 28 Nf3 Qxf4 29 Ng5 Bg4 30 Nf7+ Kg7 31 Raf1 (Kwolek-Olazewski)

II 17 ... Re6 18 a4 f5 19 Qf1 Qh5 20 Bxd5 cxd5 21 axb5 with advantage to White.



Now Black can try

- A. 21 ... axb5 22 Qxb5 f4 23 Bxf4 Bxf4 24 Rxe6 Bxe6 25 gxf4 Bh3 26 Kh1 with advantage to White.
- B. 21 ... f4 22 Bxf4 Bh3 23 Rxe6 Bxf1 24 Bxd6 Bxb5 25 Bxf8 Kxf8 26 Rcl winning (Kwolek-Nowicki).

This analysis has been reproduced here with the kind permission of Fernschach.

Since our magazine started "Theory Corner", I'm ashamed to say that not one contribution has been received from our readers. I'm sure that many correspondence players have ideas which they are willing to share, so put your pen to paper and send them in!

[Editor - as Philip indicates, the "Theory Corner" section is open to all and I would welcome contributions from anyone with ideas which would be of interest to other readers. Please send them direct to me for inclusion in a future edition.]

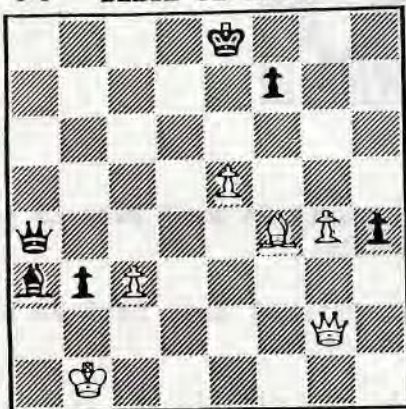
WINNING CONTINUATIONS

(selected by John Hawkes)

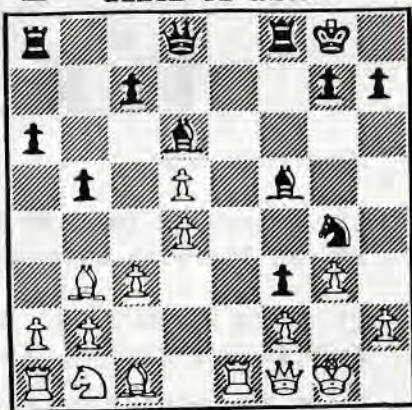
This time we have a festive competition open to all members with SCCA ratings under 2000 or unrated. John Hawkes has selected 16 positions, the first 8 being "Black to move" and the remaining 8 are "White to move".

There will be book prizes for the best three entries received. The key move(s) along with main line analysis for each position should be sent to the Editor, Scottish CCA Magazine, 8 Wheatfield Avenue, Inchtute, Perthshire, PH14 9RY. Closing date for entries is 31st January 1992.

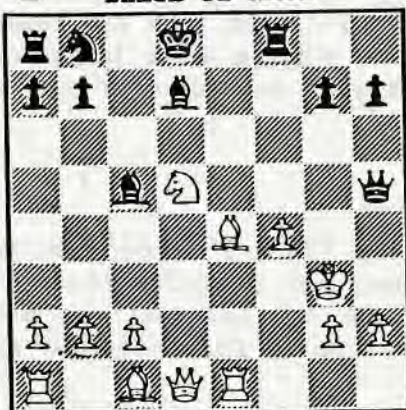
A BLACK TO MOVE



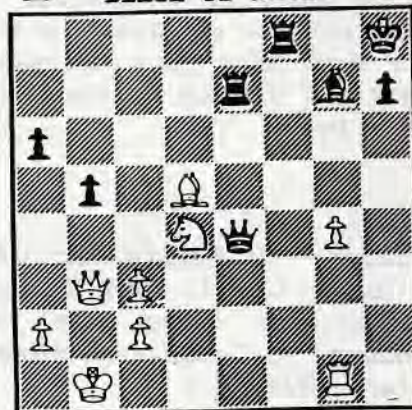
B BLACK TO MOVE



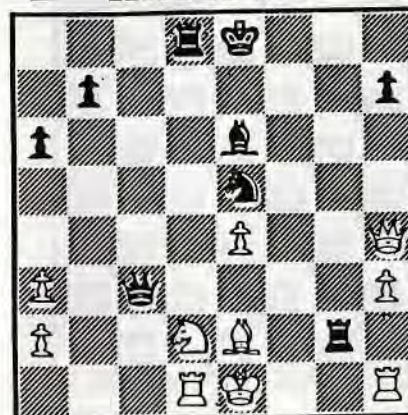
C BLACK TO MOVE



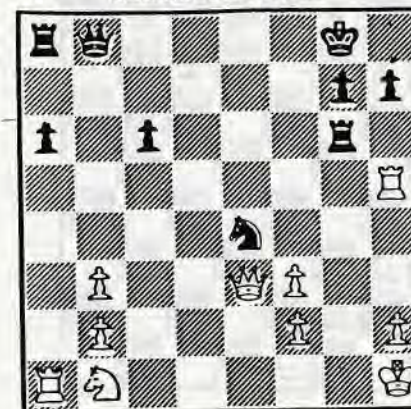
D BLACK TO MOVE



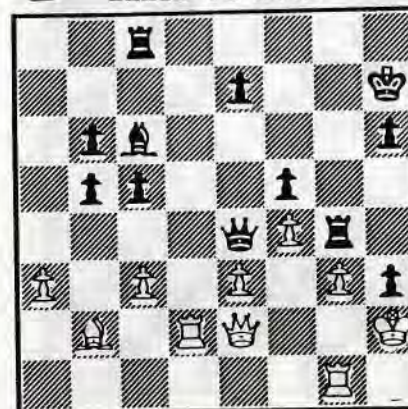
E BLACK TO MOVE



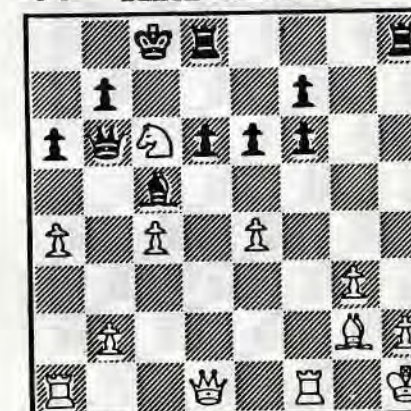
F BLACK TO MOVE



G BLACK TO MOVE



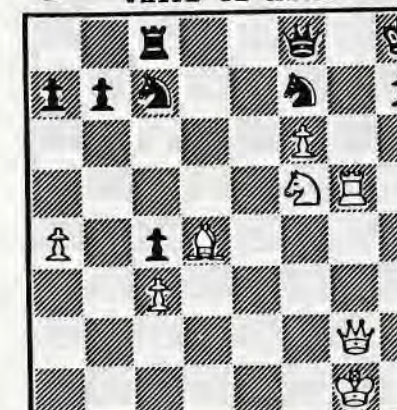
H BLACK TO MOVE

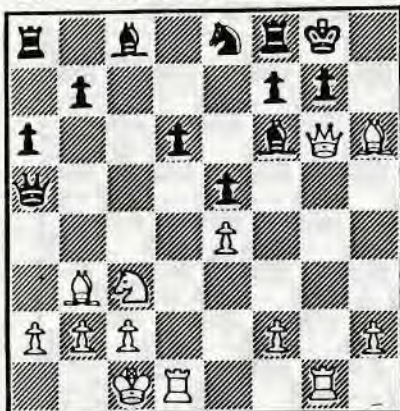
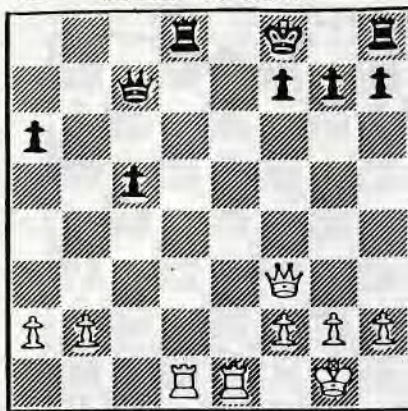
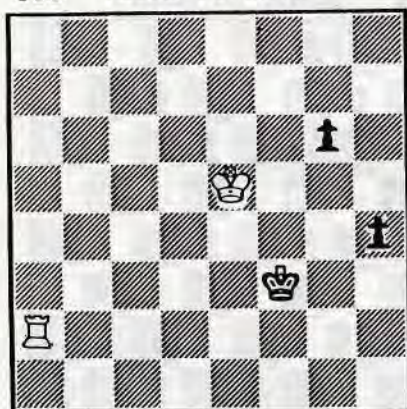
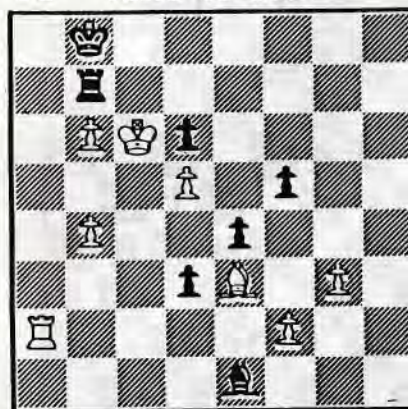


I WHITE TO MOVE



J WHITE TO MOVE



K WHITE TO MOVE**L WHITE TO MOVE****M WHITE TO MOVE****N WHITE TO MOVE****O WHITE TO MOVE****P WHITE TO MOVE****THE BRITISH CHAMPIONSHIP**

(by Brian Martin)

After finishing a promising equal-fourth at my first attempt in last season's Championship, I was feeling confident... and eager to improve on that performance. Phil Giulian wasn't competing this year, concentrating instead on the international scene. This left me as the only Scot. Immediately, I handicapped myself terribly by getting off to the worst possible start: two straight losses!

For me, this was a form-slump measuring roughly 10 on the Richter scale, yet in a way it was quite understandable. Just as play began, I was in the process of moving house. On top of this upheaval, I was playing international games. Together with the championship games, this meant I was faced with over two dozen extremely tough opponents at once! If I had been sensible, I'd have requested special leave from the Controller. But I didn't and I paid the price for it.

For the remainder of the season, I was right up against it, having to fight tooth and nail to recover, trying to avoid relegation at all costs, my basic aim being simply to survive to fight another day. Out of the twelve players in the Championship, only an approximate five or six are entitled to re-enter the following year.

Two players withdrew: Slinger in January and Evans in March, halfway through the season. With the Evans withdrawal, there ensued a great deal of confusion, due to the advanced state of the games, and an unclear rule. Those players who had good positions, including myself, felt strongly that all games involving Evans should go to adjudication. Others assumed that everyone automatically received the full point. Four months later, in July 1991, this had still to be resolved and players had been given no clarification, despite requests to the Controller.

Oddly enough, my best form - and most interesting game - was against Bob Evans, and naturally I was looking for a win after adjudication. I had already completed the spadework to gain a big advantage so I think the game is well worth showing.

White: B. Martin
Black: R.E. Evans

French Defence-Winawer C18

1	e4	e6
2	d4	d5
3	Nc3	Bb4
4	e5	c5
5	a3	Bxc3
6	bxc3	Ne7
7	Qg4	Qc7
8	Qxg7	Rg8
9	Qxh7	cxh4
10	Ne2	Nbc6
11	f4	Bd7
12	Qd3	dxh3

All standard "book" in the French.

13 Rb1 d4

Another move is 13 ... Nf5. I intended 14 h3. If 14 ... 0-0-0 then 15 g4 Nh4 16 Nxc3 Na5 17 Kf2!+= is Blatny-Kokkila, Groningen 1986-87. Oddly enough though, a game R.E. Evans v C.E. Lord from the 1987/88 British Candidates continued: 17 ... Nc4 18 Qd4 Kb8 19 Nb5 Qa5 20 Bxc4 dxc4 21 Qd6+ Kc8 22 Bd2 1:0. Also (after 14 h3), Malinin-Topuria, Soviet Champs: 14 ... Rc8 15 g4 Nh4 16 Qh7 Nf3+ 17 Kf2 Rg6 18 Kxf3 Nxe5+ 19 fxe5 Qxe5 20 Bf4 Qe4+ 21 Kf2 Qxh1 22 Ng3 Qh2+ 23 Bg2 Rc4 24 Qh8+ Ke7 25 Nf5+ 1:0.

Instead of 13 ... Nf5, if ... 0-0-0, then 14 Nxc3. And now if 14 ... Nf5 then 15 g3 Kb8 16 Nb5 Qa5+ 17 Qd2 Rh8 18 Bg2 Qa6 19 Qd3 Na5 20 Nd6+ is Anand -McDonald, London (Lloyds Bank) 1986 and is in White's favour. Or if 14 ... Na5, White can follow Przewoznik-Matlak, Maleczow 1987: 15 h3 a6 16 g4 Bc6 17 Bg2 Ng6 18 0-0 Nc4 19 Ne2! +=.

14 Rg1

The alternative 14 Nxd4 doesn't appear to give White any advantage.

14 0-0-0

If 14 ... Nf5 then 15 g4 Nh4 16 Qh7! (16 Rg3?! 0-0-0 17 Nxd4 Be8 18 Nb5 Rxd3 19 Nxc7 Rxg3 20 hxg3 Kxc7 21 gxh4 Rxg4 was equal in Tseshkovsky-Doboiian, Sverdlovsk 1987) 16 ... Nf3+ 17 Kf2 0-0-0 18 Kxf3 with a large plus to White.

15 Nxd4 Be8

A new move to me. I expected either 15 ... Nxd4 or 15 ... Na5. After 15 ... Nxd4, Aseyev-Eingorn (1989) went 16 Qxd4 Bb5 17 Qxa7 Bxf1 18 Kxf1 Qc6. At this point I have a pencilled continuation: 19 Be3 Rxg2 20 Kf2 Nxe3 21 Kxe3 Rxg2 22 Qa8+ Kc7 23 Rxb7+! but

I'm not certain if it was in fact played in the Aseyev game. The line is good for White though.

Alternatively, 15 ... Na5 16 Be3 Nd5 17 Nf5! exf5 18 Qxd5 Ba4 19 Qc5 Qxc5 20 Bxc5 Rd2 21 Rc1 Nc6 22 Be3 Rxc2 23 Rxc2 Bxc2 24 Bc4 ±, Oll-Rozentalis, Vilnius 1988. Much of the aforementioned references are taken from the notes to this game, which appears in Short's book on the French. The game continued: 24 ... Rg7 25 Kf2 Be4 26 g3 Na5 27 Na2 Kc7 28 h4 c2 29 Rc1 Rg6 30 Bxf7 Rc6 31 h5 Kd7 32 Bd2 Nc4 33 Bb4 Nb2 34 e6+ Rxe6 35 Bxe6+ Kxe6 36 h6 Nd3+ 37 Ke3 Kf7 38 Rxc2 Kg6 39 Rh2 1:0

16 Nb5

As I played this, I was still wondering if my opponent had taken 15 ... Be8 from a game I didn't know about and, if he had, was my riposte correct?

16 Qb6

If 16 ... Rxd3 17 Nxc7 Rd7 18 Nb5 Nd5 (18 ... Nf5 19 Nxc3) 19 Bc4, or if 16 ... Nxe5 17 Qe4 looked interesting, intending 17 ... Qb6 18 Qxe5! So probably 16 ... Nxe5? is a loser.

17 Be3

Absurdly comical, but it just goes to prove that humour can be found on a chess board!

17 Rxd3

Besides this, Black can play 17 ... Qxe3 18 Bxe3 Nf5 when it isn't as good for White as it looks. For instance, 19 Bxa7 Nxa7 20 Nxa7+ Kb8 21 Nb5 Bxb5 22 Bxb5 and now Black can choose between ... Ne3 or ... Rd2. Maybe I'm missing something or else maybe the answer is a simple 19 Bc5!

18 Bxb6 Rd2
19 Nd6+

On 19 Be3 I didn't want ... Rxc2 20 Nd6+ Kd8!? I preferred his King on b8.

19 Kb8

If 19 ... Rxd6? 20 exd6 Nf5 21 Bf2 Nxd6 22 Rb3! or if 19 ... Kd7 20 Bxa7! Nxa7 21 Rxb7+ Kd8 22 Rxa7. And if 22 ... Rxc2 23 Ra8 wins a piece.

20 Be3 Rxc2+
21 Rxb7+ Ka8

22 Bd3 Ra2

On 22 ... Rb2, I'd have played 23 Rxb2 cxb2 24 Kf2! Nd5 25 Nc4! going two pawns up.

23 Be4!

A really vicious move, threatening to win the knight on e7 immediately.

23 Ra1+

I felt Black had to play ... Nd5 sooner or later and that this didn't make much difference to the outcome.

24 Kf2 Ra2+

Again, just delaying the loss.

25 Kf3 Nd5
26 Bc5!

After 26 Bxd5 exd5 27 Rc7 maybe Black can get away with 27 ... Bd7! 28 Rxd7 and now either ... Rb8 or ... d4 is awkward.

26 Rd2
27 Bxd5 Rxd5

If 27 ... exd5 then 28 Rc7 anyway. Now if 28 ... Rd3+ 29 Ke2 Rd2+ 30 Ke1. Or if 28 ... c2 29 Rc8+ Nb8 30 Nxe8 Rd1 (30 ... Rgxe2 31 Be3) 31 Bd6! a5! 32 Rxb8+ Ka7 33 Rc8! wins. For

example, 33 ... Rxe1 34 Bc5+ or 33 ... c1 34 Rxc1.

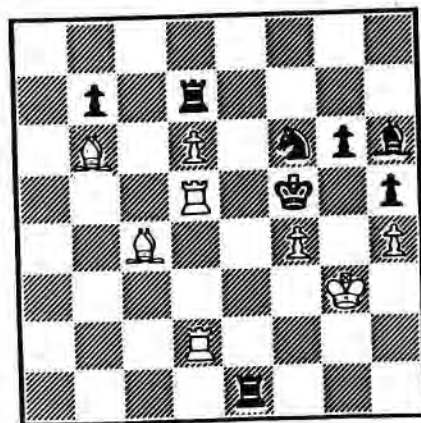
Or if 28 ... d4 29 Rc8+ Nb8 30 Nxe8 c2 31 Bd6 wins.

38 Rc7!

The winning move, to which came the annoying reply: "I withdraw through pressure of work." If 28 ... Rxc5 29 Rc8+ wins his rook. Or if 28 ... c2 29 Rc1!



Around this time, I was getting draw after draw - Stewart... then Singleton... then Taylor. Just not good enough to survive relegation at the end of the season. Then, at last, I managed a nice win.



In the diagram position, I've just played 43 Rd5+! and Dr. M.J. Donnelly resigned immediately. After 43 ... Nxd5 44 Rxd5+, Black's King has two moves:

(a) 44 ... Ke6 45 Rd1+ Kf5 46 Bd3+ Kf6 (46 ... Re4 47 Kf3, if 47 ... Rxd6 48 Bxe4+ Ke6 49 f5+!) 47 Bd4+ Kf7 48 Rxe1 wins.

(b) 44 ... Kf6 45 Bd4+ Ke6 46 Re5+ Kxd6 47 Rxe1 Kc7 48 Bc3: (i) 48 ... Bg7? 49 Bxe7 Rxe7 50 Re6 (ii) 48 ... Bf8 49 Re6 (iii) 48 ... Kc6 49 Re8.

So, if it hadn't been for my bad start, my form would actually be fairly good.

Against Bowyer, however, I pressed too hard. I could have repeated moves for a draw but, in a position where both our Kings were attacked, I decided to take risks and play for a win. My attack didn't work, I went a couple of pawns down and lost.

I drew a tough game with Corkett and won against Johnson after adjudication. Then came a real shock. All Evans' games were annulled!! I honestly hadn't expected this. For various reasons,

I believed they would be certain to go to adjudication. If they had, then obviously I might have gained an important half point on many players, due to my final winning position against Evans. The final points totals were as follows:

- AM Stewart 7,
- MPF Singleton 6½,
- MW Johnson 5,
- DW Anderton, JW Clarke 4½
- (These players re-qualified)
- MJ Donnelly, B Martin 4,
- M Taylor 3½.
- KJ Bowyer, AR Corkett 3,
- AJ Slinger, RE Evans withdrew

Whether another half point would have saved me from being relegated, I am not sure. Possibly, the S.B. system would have had to sort that one out. However, I didn't play well, so now I am going to prune my games down to about fourteen, to see if this helps.

[The decision made concerning the annulment of all the Evans games was clearly unfair. After so many moves, all positions should have been adjudicated. For such a situation to arise in the British Championship is very unsatisfactory - Editor]

CLASSIC GAMES OF CORRESPONDENCE CHESS

by John Hawkes ©

Black plays a fantastic game but fails to qualify for the Final of the III BPCF Grand Open. He did get a £10 consolation prize for his trouble however.

White: P.H. Tibbert
Black: C. Richards

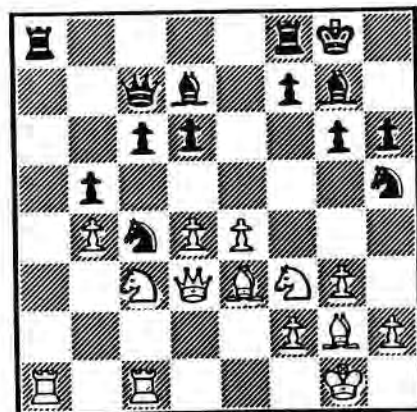
King's Indian E69

1 d4 Nf6
2 c4 g6
3 Nc3 Bg7
4 Nf3 d6
5 g3 0-0
6 Bg2 c6
7 0-0 Nbd7

14 Bc1 Bd7
15 e4 Rae8

Looking quite good.

16 Qd3 b5
17 a4 a6
18 axb5 axb5
19 Be3?! Ra8
20 Rfc1



20 Ra7

Putting all one's eggs in the a-line basket requires very careful calculation as there is often nothing at the end of it.

8 Bg5 Qc7
9 b4 h6
10 Bd2 Nb6
11 c5 Nc4
12 Bf4 Nh5
13 cxd6 exd6

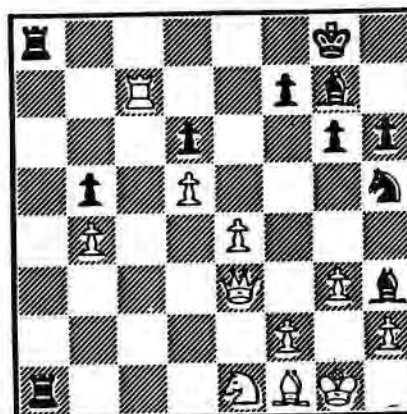
A couple of other lines of play: 7 ... a6 8 e4 b5 9 e5 Ne8 10 Qe2 bxc4 11 Qxc4 Be6 12 Qe2 h6 13 Bf4 Nbd7 14 Qd2 Kh7 15 exd6 exd6 16 d5 and White has superiority as in Vadas-Padevsky, 1975. 7 ... Qa5 8 e4 Qh5 9 Re1 e5 10 b3 Bg4 11 d5 Na6 and roughly equal chances (Geller).

21 d5 Nxe3 32 Qb3 Ree2
22 Qxe3 Rfa8 33 exf6
23 Nxb5

He buys it - or did he think Black had made an oversight?

23 cxb5
24 Rxc7 Rxa1+
25 Bf1 Bh3
26 Ne1

With two white pieces immobilised, the investment must be sound, and when you see the next one you will be convinced that Black had seen all this and maybe more when allowing 23 Nxb5.



26 Bd4!
27 Qf3 Nf6
28 Bxb3 Rxe1+
29 Kg2 Ra2
30 e5 Bxf2!
31 Rc8+ Kh7

Incredible happenings! More to come! Black now winkles out the King.

33 Bc5+!
34 Kf3 Rf2+
35 Kg4 h5+
36 Kh4 Bd4
37 g4 Bxf6+
38 g5 Rf4+
39 Kg3

All forced. Now we must try to mate him.

39 Raf2!
40 Bg2

Not 40 gxf6 h4 curtains.

40 Be5
41 Kh3 Rg4
42 Qf3

Rc2 didn't hold because of ... Rgxg2 and the mate on h2 will cost White his Queen.

42 Rxf3+
43 Bxf3 Rxb4

All over. 44 Rc2 Bf4 45 Kg2 Bxg5 46 Be2 Rb3 47 Rc7 Kg7.

0 1

© John E. Hawkes

INTERNATIONAL REPORT

(by Philip Giulian)

Alan Borwell has written a description of the changes/developments brought about by our full membership of ICCF. I do not want to repeat these here, except to emphasise the opportunities to members to play in individual international events. The first point to note is that you do **not** have to be a strong player to participate. There are tournaments for everyone. Alan has given an indication of the strength of each section on the entry form. I would urge everyone to give serious consideration to playing. Entries should be sent to me in future for entry to all ICCF tournaments.

Our Assistant International Secretary, Colin Macgregor, has been very busy arranging friendly matches against other countries. Since June we have started play with Poland (30 boards), Luxembourg (12 boards), Algeria (15 boards) and New Zealand (20 boards). Another match with Portugal (20 boards) is scheduled to begin on 15th December. For next year, Colin has arranged for us to play against France, Germany and Iceland. Colin already has a list of players for these matches from our entry forms but anyone else wishing to play should contact Colin as soon as possible.

RESULTS

Olympiad

Bd 1 D M Bryson 1 v Argentina
Bd 2 C McNab ½ v Brazil

Ladies Olympiad

Bd 4 M McGhee 0 v Poland

Scotland (15) v USA (34)

Bd 15 A Campbell 0 0
Bd 19 M Inglis 1 1
Bd 25 E Thomson 1 1

MATT

Bd 1 AJ Muir 1 v Iceland
Bd 2 C McNab 1 v USA
C McNab 0 v Iceland
Bd 3 PM Giulian ½ v Ireland
Bd 4 DA Kilgour 1 v USA
DA Kilgour 1 v Ireland
Bd 5 TJ Craig ½ v Norway
Bd 8 GWG Livie ½ v Iceland
GWG Livie 1 v Norway
Bd 9 IS Campbell 0 v Norway
IS Campbell 0 v USA

OLYMPIAD REPORT

(by Philip Giulian)

Scotland remains firmly on course for third place in our Preliminary section and therefore we should qualify for the next Olympiad Final! With only a few games left, it is now virtually impossible for us to catch either Hungary or Czechoslovakia, or for Portugal to overtake us. Argentina still have nineteen games in progress but would need a tremendous finish to come into contention. With only two teams per section qualifying automatically for the next Final, our participation does depend on the Czechoslovakian team in the present Final. If they finish in the first three, they will automatically re-qualify, allowing the third-placed team in our section to qualify as well. The latest information I have is of a close contest between four countries in the current Final:

Olympiad Final

1. E. Germany 29/45 (64%), 2. England 27½/45 (61%),
3. Czechoslovakia 28/46 (61%), 4. Soviet Union 10½/18 (58%)

However, as East Germany (DDR) no longer exists, England, Czechoslovakia and Soviet Union should all requalify for the next Olympiad Final.

Qualifying Section

1. Hungary 33/46 (72%), 2. Czechoslovakia 32/49 (65%),
3. Scotland 31/52 (60%), 4. Portugal 26/49 (53%),
5. Argentina 18/35 (51%).

With Czechoslovakia already re-qualifying, Scotland are therefore strong favourites for the next Olympiad Final!

Colin McNab has now finished all his games with a score of 6½/9, one point more than the IM norm. This was an excellent performance, especially when you remember that this was Colin's first major correspondence tournament.

continued overleaf.....

One of Colin's greatest assets is that many of his opponents do not understand what is going on in his games. I know from personal experience how disconcerting this can be, so it was reassuring when Colin admitted he didn't know what was happening in his last game to finish! The brief comments are by Colin.

White: S. Homce de Cresce
(Brazil)

Black: C. McNab

Modern Defence B08

1	e4	g6
2	d4	Bg7
3	Nc3	d6
4	Nf3	Nf6
5	Be2	0-0
6	0-0	Bg4
7	Be3	Nc6
8	Qd2	e5
9	d5	Ne7
10	Rad1	Bd7
11	Ne1	b5
12	f3	Qb8
13	Nd3	Rd8
14	b3	a6

Rather slow. The immediate
14 ... c6 is more thematic.

15	Nb1	c6
16	c4	cxd5
17	cxd5	Qb7
18	Nc3	Rac8
19	Rc1	Kh8
20	Rc2	Rf8
21	a4	b4
22	Nd1	Rxc2

23 Qxc2

I now felt that if I allowed White time to bring his knight from d1 to c4, I would be left with a horribly passive position. Hence the following drastic action.

23	Nexd5
24	exd5	Nxd5
25	N3f2	Be6
26	Qd3	f5!?
27	Qxa6	Qxa6
28	Bxa6	Nc7
29	Bc4	

In order to keep his b-pawn, White has to allow the black central pawns to advance with tempo.

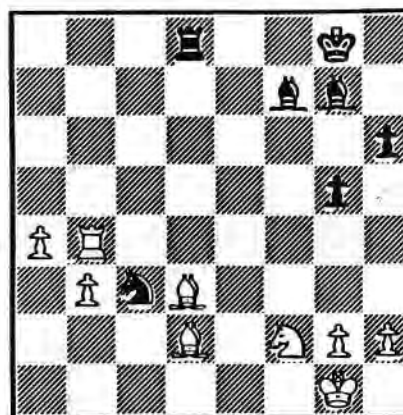
29	d5
30	Bd3	e4
31	Bf4	Rc8
32	Re1	Bf7
33	fxe4	dxe4
34	Nxe4	

White simplifies to go a pawn up, but the placement of his minor pieces remains awkward.

34	fxe4
35	Rxe4	Nd5!
36	Bg5	h6
37	Rh4	Kg8
38	Bd2	

Black would win material after 38 Bxh6? Bxh6 39 Rxh6 Rc1 40 Be2 Nc3.

38	g5
39	Rc4	Rd8
40	Nf2	Nc3!
41	Rxb4	
	♣	♣



It may seem an odd position for a draw to be agreed but Black has the tactic 41 ... Nd1! winning a piece. Then 42 Bxg5 hxg5 43 Be2 is not totally clear but is probably level.



Julius Nielsen Memorial Tournament Book
by Jørgen A. Nielsen
German Algebraic notation, paperback
(in Danish)

This is a nicely produced book on the tournament to commemorate one of the best of Denmark's CC players. It contains all 91 games of the event, the most interesting of which are annotated. It was won convincingly by Jonathon Penrose (England), one of the two highest-rated CC players in the World.

[I have obtained a small supply of this book from Denmark and a copy can be purchased from me for £5.50, inclusive of postage - it's good value! - Editor]

Fritz Baumbach Fernschach
Tips & Tricks of a World Champion
Figurine notation, hardback in German

This 256-page book traces the history of the World CC Championship from No. I won by C.J.S. Purdy (Australia) to No. XI won by Dr. Fritz Baumbach. It is more of a commentary on the route to become World CC Champion and some knowledge of German is needed to obtain full enjoyment. Perhaps an English translation might be published in due course?

[Available from Sportverlag, Berlin (enquiries can be made via Editor, Scottish CCA Magazine, or Chess Suppliers (Scotland) Ltd.)]

C C OLYMPIAD XI PRELIMINARIES

(Section 2)

1 CZECHOSLOVAKIA +15		1	2	3	4	5	6	7	8	9	10
1	A LANC MIN 2430		1	1/2		1	1	1/2	1	1	1/2
2	J AMBROZ -		1	1/2	1/2	1	1	1/2	1/2	1	0
3	N VEINER IM 2435		1/2	1	1		1	1/2	1/2	1/2	0
4	R NACHALA 2380		0	1		1/2	1/2		1/2	1	
5	J KOLIN 2335		1/2	0	0	1/2	1	1/2	1	1/2	0
6	P NISKOVSKY 2480		1	1	1	1/2	1	1	1	1/2	0

2 BELGIUM -4		1	2	3	4	5	6	7	8	9	10
1	A VAN OSMARL MIN 2530	0		1		1	1/2	0	1	1/2	
2	J ROOSE 2330	0		1/2	0	1/2	0	0	1/2	0	1/2
3	E VAN LERUWEN 2140	1/2		1	1/2	1	1/2	1/2	1	1	0
4	D VEYNS -	1		1		0	1	1	1/2	1/2	
5	V LEROY 2265	1/2		1/2		0	1/2	1	0	1/2	0
6	H VBBN -	0			1/2	0	1	1/2	0	0	0

3 SINGAPORE -25		1	2	3	4	5	6	7	8	9	10
1	H F GLASER 2380	1/2	0			0	1/2	0	1/2	0	0
2	A CHIA -	1/2	1/2		0	1/2	1/2	1/2	0	0	0
3	K-S TEO -	0	0			0	0	0	1/2	0	0
4	C-V LEONG -	0	0		1/2	0	0	1	1/2	1/2	0
5	W-Y WONG -	1	1/2		1/2	0	1/2	1	1/2	0	1
6	B TEO -	0			0	0	0	1	0	0	0

4 ARGENTINA +1		1	2	3	4	5	6	7	8	9	10
1	J S MORGADO GN 2475					1/2		1/2		0	1/2
2	B MARCUSSI IM 2470	1/2	1	1			1			0	1/2
3	P BUJ IM 2445	0	1/2					0	1	1	0
4	R A REDOLFI IM 2385			1/2				1	0	0	1
5	A LAURENCINA 2405	1		1/2		1/2	0		1/2	1/2	1/2
6	C G PAPIER IM 2315	0	1/2	1		1			1/2	1/2	1/2

5 PORTUGAL +3		1	2	3	4	5	6	7	8	9	10
1	F SILVA MIN 2280	0	0	1	1/2		1/2	1/2	1/2	1/2	
2	R SILVA PEREIRA MIN -	0	1/2	1/2			1/2	1/2	1/2	1/2	0
3	H NETO MIN -		0	1			1/2	0	1	0	1
4	J D-DE SOUSA -	1/2	1	1			0	1	1/2	1	0
5	A OLIVEIRA MIN -	1/2	1	1	1/2		1	1/2	1/2	1/2	1/2
6	C QUARESMA -	1/2	1	1	0		0	1	1	1/2	0

6 FINLAND -9		1	2	3	4	5	6	7	8	9	10
1	T PERMAN MIN 2355	0	1/2	1/2		1/2				0	0
2	H SABEL 2395	0	1	1/2	0	1/2			1/2	0	0
3	K TANNI -	0	1/2	1		1/2		1/2	1/2	1	0
4	S SJOKAN 2420	1/2	0	1		1		1/2	0		1/2
5	K KAUNONEN IM 2465	0	1/2	1/2	1	0			1/2	1/2	0
6	R VIKMAN IM 2405		0	1		1		1	0	0	1/2

7 BRAZIL -7		1	2	3	4	5	6	7	8	9	10
1	G PRAGA PORTILHO 2355	1/2	1	1	1/2	1/2					
2	S HONCE DE CRESCHE -	1/2	1	1/2		1/2					1/2
3	N BILOS BIAVA MIN 2440	1/2	1/2	1	1	1	1/2		1/2	0	1/2
4	A PACINI MIN 2360		0	0	0	0	1/2		1/2	0	
5	O ALCANTARA SOARES 2350	1/2	0	0		1/2			1/2	1/2	
6	P A QUENEZ BRIO -	0	1/2	0		0	0		1	0	0

8 NORWAY -4		1	2	3	4	5	6	7	8	9	10
1	T STRAND MIN 2370	0	0	1/2		1/2				1/2	
2	K V STRAND IM 2445	1/2	1/2	1		1/2	1/2			0	1/2
3	F LARSEN 2325	1/2	0	1/2	0	0	1/2	1/2		1/2	1/2
4	P STIGAR -	1/2	1/2	1/2	1	1/2	1	1/2		1	1/2
5	O HJERTENES -	0	1	1/2	1/2	1/2	1/2	1/2		1/2	1/2
6	O BREKKE -	0	1	1	1/2	0	1	0		0	0

9 SCOTLAND +10		1	2	3	4	5	6	7	8	9	10
1	D W BRYSON GN 2585	0	1/2	1		1/2	1		1/2		1
2	C A MCNAB (FIDE) IM(2435)	0	1	1	1	1/2	1		1		1/2
3	A J MORRIS / A.P. BORNWELL	1/2	0	1	0	1	0	1	1/2		1/2
4	T B VICKERS / G. P. WICH MIN 2470	0	1/2	1/2	1	0		1	0		0
5	P H GIULIAN 2370	1/2	1/2	1	1/2	1/2	1/2	1/2	1/2		1/2
6	D KILGOUR 2365	1/2	1	1	1/2	1/2	1	1	1		0

10 HUNGARY +20		1	2	3	4	5	6	7	8	9	10
1	S BRILLA-BANFALVI GN 2545	1/2		1	1/2		1			0	
2	J FOLDI / HONFI IM 2450	1	1/2	1	1/2	1	1	1/2	1/2	1/2	
3	F FABRI 2550	1	1	1	1	0	1	1/2	1/2	1/2	
4	I MULLNER 2345			1	0	1	1/2		1/2	1	
5	T FLORIAN / HAAG 2415	1	1	0	1/2	1/2	1		1/2	1/2	
6	I FODOR MIN 2195	1	1	1	1/2	1	1/2	1	1	1	

N°	BOARD 1	1/2 IM = 4 1/2 pts	TEAM	1	2	3	4	5	6	7	8	Points	Place
1	B. KACZOROWSKA		PL		0	1	0		1/2	1/2	1		
2	M. INGLIS		GBS	1		1	0	0	1	1/2	1	4 1/2	
3	L. VAYRYNEN		SF	0	0		0	0	1/2	1/2	1	2	
4	A. SUKHININA		SU	1	1	1		1	1	0	1	6	
5	G. THORSTEINSDOTTIR		IS		1	1	0		1/2	0	1		
6	A. KNECHT		CH	1/2	0	1/2	0	1/2		1/2	1	3	
7	G. NACHTMANN		FRG	1/2	1/2	1/2	1	1	1/2		1	5	
8	G. SCHOISSWUHL		A	0	0	0	0	0	0	0		0	

1/2 IM

N°	BOARD 2	1/2 IM = 5 pts	TEAM	1	2	3	4	5	6	7	8	Points	Place
1	H. SALABU		PL		1	1		1/2	1	1	1		
2	E. HARTFORD		GBS	0		0	0	1/2	0	0	1	1 1/2	
3	T. ALHO		SF	0	1		0	0	0	0	1	2	
4	V. STERNINA		SU		1	1			1	1/2	1		
5	D. TRAINSDOTTIR		IS	1/2	1/2	1			0	1/2	1		
6	C. BAUMANN		CH	0	1	1	0	1		1	1	5	
7	I. SCHADE		FRG	0	1	1	1/2	1/2	0		1	4	
8	H. MIRA		A	0	0	0	0	0	0	0		0	

N°	BOARD 3	1/2 IM = 5 pts	TEAM	1	2	3	4	5	6	7	8	Points	Place
1	I. KONDRACKA SZCZEPANIAK		PL		1			1/2	1/2	0	1/2		
2	A. Mc LURE		GBS	0		1		1/2	1/2	1/2	1/2		
3	M. VOUTILAINEN		SF		0			0	0	0	0		
4	I. PRIEDITE		SU					1/2			1		
5	G. GRETARSDOTTIR		IS	1/2	1/2	1	1/2		0	1	1/2	4	
6	E. LUSSY		CH	1/2	1/2	1		1		0	0		
7	C. BLODIG		FRG	1	1/2	1		0	1		1		
8	M. HORVATH		A	1/2	1/2	1	0	1/2	1	0		3 1/2	

N°	BOARD 4	1/2 IM = 5 1/2 pts	TEAM	1	2	3	4	5	6	7	8	Points	Place
1	B. KOPEC		PL		1	1	0		1	1/2	1		
2	M. Mc GEE		GBS	0		1	0	1/2	1	0	0	2 1/2	
3	A. PIETILAINEN		SF	0	0		0	1/2	0	0	0	1/2	
4	L. KOROLJKOVA PUDKOVA		SU	1	1	1		1					
5	A. KRISTINSDDTTIR		IS		1/2	1/2	0		1/2	1/2	0		
6	J. HAJDU		CH	0	0	1		1/2		0	0		
7	B. BARTHEL		FRG	1/2	1	1		1/2	1		0		
8	I. KATTINGER		A	0	1	1		1	1	1			

TEAM CAPTAIN : C.R. BEECHAM

SCOTLAND	
1	A J Norris
2	A P Borwell
3	S R Gillam
4	S Mannion
5	C R Beecham
6	G D Pyrich
7	G W G Livie
8	K W C Stewart
9	R Inglis
10	I A Marks
11	R Mitchell
12	I Marshall
13	I Mackintosh
14	G R Sprott
15	G Wood
16	A Hind
17	T McMorran
18	D J Savage
19	K D Anderson
20	K Gordon

UKRAINE

UKRAINE		ICCF Ratings
1	V K Bratsev	All of our international friendly matches are now included for ICCF rating purposes. Therefore, players can more quickly achieve the requisite number of completed games (20) to achieve a published rating. Although there has been some disquiet expressed that this has been done retrospectively (eg. for our match with Ukraine which began more than 5 years ago!), it must surely be applauded that the Rating Commissioner is now able to provide this further extension of ICCF services.
2	B B Zhugla	
3	A J Bangiev	
4	V G Skotareno	
5	P Darmogray	
6	G P Topchy	
7	S P Kuznetsov	
8	P N Tch/ovskiy	
9	K Y Venglovskiy	
10	V S Izmailov	
11	J N Kulibaba	
12	E F Shtefan	
13	A V Yeremenko	
14	V G Stulnikov	
15	A R Treguba	
16	V V Kunyansky	
17	A M Farionov	
18	Y D Setchin	
19	N N Khomenko	
20	N S Zinovatny	

11 27



IV EUROPEAN TT PRELIMINARY SECTION 3

The current team scores are:

	Pts	Pos	%	Bd	SCOTLAND	Pts	Pos
1	48 1/2	73	66,4	1	A J Muir	7	8 (IM norm)
2	55	87	63,2	2	A P Borwell	4 1/2	8
3	45 1/2	82	55,5	3	S R Gillam	2	7
4	32	64	50,0	4	D M Jenkins	2	6
5	29 1/2	60	49,2	5	G D Pyrich	2 1/2	7
6	34	73	46,6	6	T J Craig	3 1/2	8
7	40 1/2	87	46,5	7	D H Dempster	1 1/2	5
8	25 1/2	56	45,5	8	B J Martin	3 1/2	8
9	18	75	24,0	9	A J Shaw	3	8
				10	G W G Livie	4	7
				11	J Seyfried	3	7
				12	G R Sprott	5	8

Total games per team = 96

IV EUROPEAN TEAM CHAMPIONSHIP PRELIMINARIES

BOARD 1 - A J NUIR

De Bu Sc Po Sw CS Sp Ir Au

Den	Sorensen, B	2575	●		○	○	○	○	1/2	1/2	1/2		
Bul	Kostadinov, K	2445		●	○			○		○	○		
Sco	Muir, A J	(2225)F	1	1	●	1	1/2	1/2	1	1	1	7	1/2 M
Por	Ferreira, A M A	(2300)F	○		○	●	1		1/2	○	1		
Swe	Carlsson, I	2455	1		1/2	○	●	1/2	1	1/2	1/2		
CS	Bulla, Dr J	2435	○	1	1/2		1/2	●		1/2	1/2		
Spa	Lanz Calavia, J M	2355 M	1/2		○	1/2	○		●	○	1/2		
Ire	Ludgate, A T	2465	1/2	1	○	1	1/2	1/2	1	●	1/2	5	
Aus	Fleischhanderl, F	2470	1/2	1	○	○	1/2	1/2	1/2	1/2	●	3 1/2	

BOARD 4 - D M JENKINS

De Bu Sc Po Sw CS Sp Ir Au

Den	Sorensen, T	2450	●	1	1/2	1	1/2	1		1	1/2		
Bul	Sergiew, S	2310	○	●		1/2	1/2	1/2		1			
Sco	Jenkins, D M	2385	1/2		●	1/2	○	○		1	○		
Por	Castro, F A P S	2200	○	1/2	1/2	●	○	1	1/2		○		
Swe	Enterfeldt, L	2385	1/2	1/2	1	1	●		1	1/2	1		
CS	Machala, Dr R	2395	○	1/2	1	○		●			1		
Spa	Paredes Prats, J	2370				1/2	○		●	1/2			
Ire	O'Siochru, O	2200	○	○	○		1/2		1/2	●	○		
Aus	Hipfl, V	2350	1/2		1	1	○	○		1	●		

BOARD 2 - A P BORWELL

De Bu Sc Po Sw CS Sp Ir Au

Den	Christensen, B	2555	●	1/2	1/2	1/2	○	1/2	○	○	1/2	2 1/2	
Bul	Metchkarov, V	2200	1/2	●	1/2	1/2	○	1/2			1		
Sco	Borwell, A P	2280	1/2	1/2	●	1	○	1	1	1/2	○	4 1/2	
Por	Costa, F V L S	2200	1/2	1/2	○	●	○	1/2	○	1/2	○	2	
Swe	Lundholm, Dr S G	2450 M	1	1	1	1	●	1	1	1	1/2	7 1/2	1/2 M
CS	Krecmer, Ing M	2440	1/2	1/2	○	1/2	○	●			○		
Spa	Garriga Nualart, J	2570 M	1		○	1	○		●		○		
Ire	Harding, T D	2270	1		1/2	1/2	○			●	1/2		
Aus	Teichmeister, Dr S	2395	1/2	○	1	1	1/2	1	1	1/2	●	5 1/2	1/2 M

BOARD 5 - G D PYRICH

De Bu Sc Po Sw CS Sp Ir Au

Den	Jensen, IB V N	2440	●		1/2	1	1	1	1	1	1		
Bul	Kostakiev, D	2200		●	1	○		1/2			1/2		
Sco	Pyrich, G D	2205	1/2	○	●	1/2	○	1		1/2	○		
Por	Cordiero, V L	2200	○	1	1/2	●		1	1	○	○		
Swe	Becker, J	2390	○		1		●	1	1	1	1/2		
CS	Marecek, Ing M	2340	○	1/2	○	○	○	○	●	1	1/2		
Spa	Bonay Toscas, S	2375	○			○	○	○	○	●	1/2		
Ire	Montgomery, R	2345	○		1/2	1	○			●	1/2		
Aus	Venger, Dr K	2200	○	1/2	1	1	1/2	1/2	1/2	1/2	●	4 1/2	

BOARD 3 - S R GILLAM

De Bu Sc Po Sw CS Sp Ir Au

Den	Lassen, H J	2495	●	1/2	1/2	1/2	1/2	1	1	1	○	5	
Bul	Petrov, V	(2270)F	1/2	●	1/2	1/2		1/2	1/2		1/2		
Sco	Gillam, S R	2395	1/2	1/2	●	○	○	1/2		1/2	○		
Por	Quaresma, L M T	2200	1/2	1/2	1	●	1/2	1/2	1		1		
Swe	Gustafsson, G	2405	1/2		1	1/2	●			1	1		
CS	Kolin, J	2340	○	1/2	1/2	1/2		●		1/2	○		
Spa	Padros Simon, A	2340	○	1/2		○			●				
Ire	Gibson, J F	2395	○		1/2		○	1/2		●	○		
Aus	Aigmüller, Ing M	2360	1	1/2	1	○	○	1		1	●		

BOARD 6 - T J CRAIG

De Bu Sc Po Sw CS Sp Ir Au

Den	Vefling, G	2430	●		1	1	○	○	1/2	1	1		
Bul	Parvanov, L	2300		●	1/2		○	○		1/2	1/2		
Sco	Craig, T J	2290	○	1/2	●	1	1/2	○	○	1	1/2	3 1/2	
Por	Palhares/Figueiras	2200	○		○	●				1/2			
Swe	Nilsson, J	2200	1	1	1/2		●	1	1	1	1		
CS	Novotny, Ing J	2415	1	1	1		○	○	1/2	1	1		
Spa	Ivanez Rico, F	2420	1/2		1	1/2	○	1/2	○	1	1		
Ire	Brady, L E	2265	○	1/2	○	1/2	○	○	○	○	1/2	1/2	
Aus	Koller, H	2200	○	1/2	1/2		○	○	○	1/2	●		

continued

BOARD 7 D H DEMPSTER De Bu Sc Po Sw CS Sp Ir Au

Den	Sogaard, O	2440	●	1/2	1	1	1	1/2	1/2	1	1/2	6
Bul	Gentchev, G S	2220	1/2	●			1		1			
SCO	Dempster, D H	2135	0		●	0			0	1/2	0	
Por	Demetrio, A E R	2200	0		1	●	1/2		1	1	1	
Swe	Friberg, H	(2265)F	0	0		1/2	●	0	0	1	1/2	
CS	Rosenzweig, V	2365	1/2				1	●			0	
Spa	Montecatine Rios, R	2390	1/2	0	1	0	1		●	1		
Ire	Thomson, A	2200	0		1/2	0	0		0	●	1/2	
Aus	Strauss, Prof A	2200	1/2		1	0	1/2	1		1/2	●	

BOARD 8 - B J MARTIN De Bu Sc Po Sw CS Sp Ir Au

Den	Berggreen, A J	2400 M	●	1/2	1/2	1	1/2		0	1	1/2	
Bul	Minkov, I	2200	1/2	●	1	1	1/2			1		
SCO	Martin, B. J.	2290	1/2	0	●	0	1	1/2	0	1	1/2	3 1/2
Por	Flores, J M S	2200	0	0	1	●	0	1/2	0			
Swe	Erlandsson, C-B	2310	1/2	1/2	0	1	●			0		
CS	Lizan, Ing L	2380			1/2	1/2		●			1/2	
Spa	Bernal Caamano, J	2200	1		1	1	1		●	1		
Ire	Killane, J	2200	0	0	0				0	●		
Aus	Steinwender, W	2200	1/2		1/2			1/2			●	

BOARD 9 - A J SHAW De Bu Sc Po Sw CS Sp Ir Au

Den	Nielsen, M	2395	●	1	1	1/2	0	1	1/2	1	0	5
Bul	Atanasov, B P	2425	0	●	1/2			1				
SCO	Shaw, A J	2200	0	1/2	●	0	1/2	1/2	0	1	1/2	3
Por	Morais, V M	2200	1/2		1	●			1/2	1	1	
Swe	Rydholm, L	2215	1		1/2		●	1		1	1/2	
CS	Stodola, J	2200	0	0	1/2		0	●		1	1	
Spa	Casares Ripoll, F	2200	1/2		1	1/2			●	1	0	
Ire	Gallacher, B	2200	0		0	0	0	0	0	●	0	
Aus	Roth, P	2300	1		1/2	0	1/2	0	1	1	●	

BOARD 10 G W G LIVIE De Bu Sc Po Sw CS Sp Ir Au

Den	Petersen, S	2345	●		1/2	1/2	1	0	0	1	1/2	
Bul	Tschankov/ Salimov	2200		●	0	0					0	
SCO	Livie, G W G	2200	1/2	1	●	1	0		0	1	1/2	
Por	Costa, L M C M	2200	1/2	1	0	●		1/2	0	1	1/2	
Swe	Seger, G	2295	0		1		●		1/2		1	
CS	Hadraba, Ing V	2420	1			1/2		●		1/2	1/2	
Spa	Gude Fernandez, A	2420	1		1	1	1/2		●	1/2	0	
Ire	Humphrys, F J	2200	0		0	0		1/2	1/2	●	1/2	
Aus	Vodep, O	2280	1/2	1	1/2	1/2	0	1/2	1	1/2	●	4 1/2

BOARD 11 - J SEYFRIED De Bu Sc Po Sw CS Sp Ir Au

Den	Kleiminger, P	2200	●		1	1/2	0	1		1	1/2	
Bul	Tenev, T	2200		●	0		1	0	1			
SCO	Seyfried, J	2200	0	1	●	0		0	1	1	0	
Por	Pinto, H M F B	2200	1/2		1	●				1	1	0
Swe	All, V	2400	1	0			●				1	0
CS	Necesy, Z	2320	0	1	1			●			1	0
Spa	Gil Matilla, C	2200		0	0	0			●	1		
Ire	Shaw, J	2200	0		0	0	0	0	0	●	0	
Aus	Tarnowiecky, Dr H	2340	1/2		1	1	1	1		1	●	

BOARD 12 - G R SPROTT De Bu Sc Po Sw CS Sp Ir Au

Den	Danstrup, H	2535	●	1	1/2	1	1			1	1/2	
Bul	Mintchev, V	(2230)F	0	●	0	1	1/2	1/2		1	1/2	
SCO	Sprott, G R	2200	1/2	1	●	1	0	0	1/2	1	1	5
Por	Fonseca, A V V	2200	0	0	0	●	1/2	0	0	0	1/2	1
Swe	Olsson, S	2200	0	1/2	1	1/2	●	1/2	1/2	0	1	4
CS	Malac, M	2200		1/2	1	1	1/2	●		1	1/2	
Spa	Guillen Marco, J	2200			1/2	1	1/2		●	1	0	
Ire	Shouldice, A	2200	0	0	0	1	1	0	0	●	1/2	2 1/2
Aus	Urban, Prof F	2290	1/2	1/2	0	1/2	0	1/2	1	1/2	●	3 1/2

III NORTH ATLANTIC TEAM TOURNAMENT

(by Philip Giulian)

Scotland is doing quite well in this Tournament and should do better than the 6th place we achieved in the 2nd NATT.

In the last NATT I also had black against Eugene Gibney. On that occasion I had the better of the draw and this time I decided to risk a dubious opening in an attempt to win.

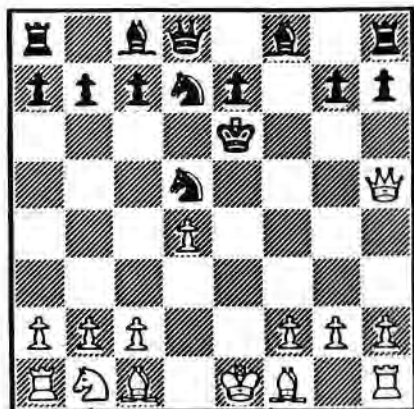
White: E. Gibney (Ireland)
Black: P. Giulian (Scotland)

Alekhine's Defence B04

- | | | |
|---|--------|------|
| 1 | e4 | Nf6 |
| 2 | e5 | Nd5 |
| 3 | d4 | d6 |
| 4 | Nf3 | dxe5 |
| 5 | Nxe5 | Nd7? |
| 6 | Nxf7!? | |

White can secure a safe edge with 6 Bc4 Nxe5 7 dxe5 c6 8 Qf3 Qc7 9 Bf4. However 6 Nxf7, the old refutation, is supposed now to only give equality.

- | | | |
|---|-------|------|
| 6 | | Kxf7 |
| 7 | Qh5+ | Ke6 |



8 g3

The old refutation was 8 c4 N5f6 9 d5+ Kd6 10 Qf7 Ne5! 11 Bf4 c5 12 Nc3 a6 13 b4 but Qb6 seems playable for Black. Note here that 13 0-0-0? is a mistake because of g6 threatening Bh6.

- | | | |
|---|-------|----|
| 8 | | b5 |
| 9 | b3!? | |

Certainly 9 Bxb5? is a mistake because of N7f6. Usual here is 9 a4 c6 10 axb5 g6 11 Qe2 Kf7 12 bxc6 N7b6 with an unclear position. It was now I discovered 9 b3 in an article in Pergamon Chess.

- | | | |
|----|-------|------|
| 9 | | b4 |
| 10 | a3 | c6!? |

Trying to take advantage of White's slowness on the queenside. Now I intend g6 so that my King can escape via f7, so forced is...

- | | | |
|----|-------|-------|
| 11 | Bh3+ | Kd6 |
| 12 | axb5 | e5 |
| 13 | c4! | Nxb4 |
| 14 | dxe5+ | Nxe5? |

Better was my original idea of 14 ... Kc7 15 0-0 Nd3 and now 16 e6 can be met by N7c5 (not Nf6?? 17 Qa5+) while 16 Bf4 Nxf4 17 gxf4 Nc5 seems fine for Black.

- | | | |
|----|-----|-----|
| 15 | c5+ | Kc7 |
|----|-----|-----|

Not 15 ... Kxc5?? 16 Qxe5+ and now (i) 16 ... Kb6 17 Qa5+; (ii) 16 ... Qd5 17 Be3+ Kb5 18 Nc3+ mate; (iii) 16 ... Nd5 17 Be3+ Kb5 18 Nc3+ Kb4 19 Qd4 mate.

- | | | |
|----|-------|------|
| 16 | Qxe5+ | Kb7 |
| 17 | Bxc8+ | Rxc8 |
| 18 | 0-0 | Nd3 |
| 19 | Qc3 | Bxc5 |
| 20 | Be3! | |

Taking the pressure off f2 and also taking a defender away from a7. At the same time the f-file is opened.

- | | | |
|----|-------|------|
| 20 | | Bxe3 |
| 21 | fxe3 | Rc7 |

The only move. White was threatening Qxg7+ and also Rd1 winning the knight.

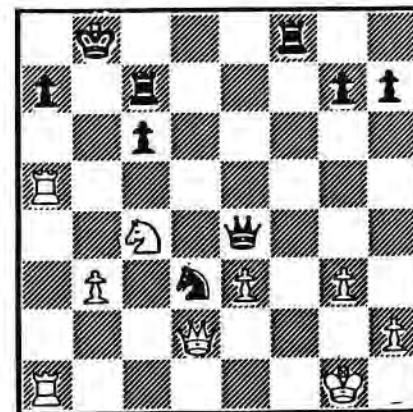
- | | | |
|----|-------|-----|
| 22 | Nd2 | Qd5 |
| 23 | Nc4?! | |

I was more concerned about 23 Ra5 c5 24 Nc4.

- | | | |
|----|-------|-----|
| 23 | | Rd8 |
| 24 | Ra5 | Qe4 |
| 25 | Rfa1 | Kb8 |
| 26 | Qd2 | |

Avoiding the trap of 26 Rxa7 Rxa7 27 Rxa7 Qf3 (not 27 ... Kxa7 28 Qa5+ Kb7 29 Qxd8) and Black has at least a draw.

- | | | |
|----|-------|-----|
| 26 | | Rf8 |
|----|-------|-----|



27 Nd6 Qf3!

Not 27 ... Qg6?? 28 Ne5 Nxe5
29 Qb4+ and 30 Qxf8+.

28 Qxd3

Agreed drawn by perpetual
check.



One of the most disconcerting situations in chess is when your opponent plays a totally unexpected aggressive/sacrificial move. These moves are often successful, partly because of the shock value, but more usually because you become disorientated and unable to adjust to the changed position. There is also a feeling of fear that your opponent wouldn't have played such a move without careful analysis beforehand. George Livie faced just such a situation in his game with E. Gullaksen (Iceland). As George admitted afterwards, he was glad it was a correspondence game and not over-the-board! Notes are by George.

White: G. Livie (Scotland)
Black: E. Gullaksen (Norway)

Sicilian Dragon B78

1	e4	c5
2	Nf3	d6
3	d4	cxd4
4	Nxd4	Nf6
5	Nc3	g6
6	Be3	Bg7
7	Qd2	0-0
8	f3	Nc6
9	Bc4	Bd7
10	0-0-0	Qb8

Played as an alternative to Qa5 which gains White a tempo by 11 Nb3.

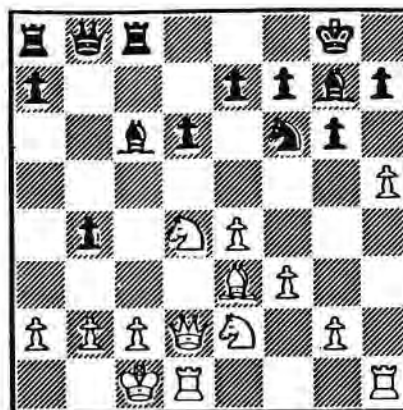
11 h4

Time is of the essence and White must launch his own kingside attack and react vigorously to Black's threatened queenside attack.

11	b5
12	Bd5	Rc8
13	Bxc6	Bxc6
14	h5	b4

Both sides press their
attack.

15 Nce2



I expected 15 ... Nxb5 16 Rxb5 gxb5 17 Nf5 Rc7 18 Bh6 with a good game for White as in Wahis-Ristic, Dortmund 1989.

15 Nxe4?!

A speculative and unexpected move played on the cutting edge of theory. Black gives up a piece for 2 pawns to wrest the initiative. White must play with care but Black's move has perhaps more shock value than merit.

16	fxe4	Bxe4
17	hxg6	Bxg6
18	Nf4	

White must try to exchange
the protective bishops.

18 Be4

Black also recognises their value and seeks to thwart White's plan.

19 Nd3

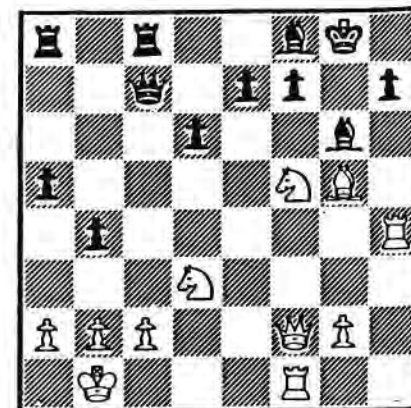
Obstructing the weakness on c2 and clearing the e3-h6 diagonal.

19	a5
20	Rh4	Qb7
21	Kb1	Bg6
22	Rf1	Qd7
23	Bh6	Bf6
24	Bg5	Bg7

Black continues to avoid exchanging his protective pieces.

25	Qf2	Qc7
26	Nf5	Bf8

Possibly Bh8 may have allowed Black to hold out a little longer but he is still in difficulty after 27 Nf4.



27 Bh6 Ra6
28 g4

White has time to strengthen his hold on the position.

28 e6
29 Bxf8

White exchanges the defending bishop and in doing so wins the game.

29 Kxf8

Not 29 ... Rxf8 allowing 30 Nh6+ followed by Qf6 mate.

30 Nd4

White threatens to fork the queen.

30 Ke8
31 Nf4 Resigns

White has too many threats and Black decides to bring his experimental 15th move to an end. If 31 ... Qe7 32 Nxc6 fxc6 33 Nxe6. If 32 ... Be4 33 Nfxe6 fxe6 34 Qf8+ followed by Rxh7 mate. If 33 ... Bxc2+ 34 Nxc2 Qxc2+ 35 Qxc2 Rxc2 36 Kxc2 and Black has lost too much material.

Jim Stevenson has made an encouraging start to his first international tournament for Scotland. In the following game he shows he is not afraid of wild complicated positions. Notes are by Jim.

White: J. Stevenson
Black: P. Bowers (Wales)

Sokolski A00

1	b4	a5
2	b5	Nf6
3	Bb2	d6
4	e3	g6
5	d4	Bg7
6	Nf3	0-0
7	c4	c5
8	Nc3	cxd4
9	exd4	Qc7
10	Be2	e5

Alternatively 10 ... Be6 (provoking d5, allowing black to play Nd7/c5) 11 Nd2 Bh6!? 12 d5?! (12 Rc1 Bxd2 13 Qxd2 Bxc4? 14 Nd5! Nxd5 15 Bxc4) 12 ... Bc8 (12 ... Bf5 13 Nb3, followed by Nd4) 13 0-0 Nbd7 14 Nde4 Bg7 =, Sokolsky-Luik, USSR 1957 (Analysis: Thomas /Gillam)

11	0-0	Bf5
12	h3	

12 Qd2!?

12 Rc8!?
13 Bc1!

(1) 13 c5 exd4 (13 ... dxc5 14 dxe5) 14 cxd6 Qxd6 15 Nxd4 unclear; (2) 13 g4 (with the idea of g5/Nd5, threatening b6 or capturing on e5) (2a) 13 ... Be4? 14 Nd2 (14 g5? Bxf3) 14 ... d5 (with compensation) or, (2b) 13 ... Be6! which is slightly better for Black.

13 Be6!
14 d5

Only move. (1) 14 Nd2? exd4, (2) 14 c5 exd4 15 cxd6?? Qxc3.

14 Bf5
15 Be3 Qd8?

15 ... h5 (slightly better for Black).

16 g4! Bd7

16 ... Ne4 17 Na4, heading for b6.

17 Na4

17 Nd2 Be8!

17 Ne4
18 Nb6

18 Rc1 Nc5 or 18 Nd2!? Nc5.

18 Nc3 .
19 Qd2

19 Qe1!?

19 e4!

19 ... Ne4? 20 Qd3 (with clear advantage); (1) 20 ... Nc5 21 Bxc5; (2) 20 ... Nc3 21 Qxc3 e4 22 Bd4 Bxd4 23 Qxd4 exf3 24 Bxf3.

20 Nd4!?

20 Nh2 Nxe2+ 21 Qxe2 Qh4 (with initiative/compensation).

20 Qxb6
21 Nc6 Rxc6!?

(1) 21 ... Qc7? 22 b6 (with clear advantage); (2) 21 ... Nxe2+ 22 Qxe2, (2a) 22 ... Bxg4!? 23 Qxg4 (23 hxg4? Qc7) 23 ... f5! (23 ... Qc7?) 24 Qxc8+! threatening Ne7) 24 Bxb6 (24 Qxf5?? gxf5 25 Bxb6 Bxc6 [with clear advantage]) 24 ... fxc4 25 Ne7+ Kf7 26 Nxc8 Bxa1 27 Rxa1 Nd7 28 Nxd6+ Ke7 29 Bc7! (with clear advantage); (2b) 22 ... Qxe3! 23 Qxe3 bxc6 (23 ... Bxa1? 24 Ne7+ and 25 Nxc8) 24 dxc6 Nxc6! 25 bxc6 Bxc6 (threatening ... Be5) (with compensation).

22 Bxb6

22 bxc6? Nxe2+ 23 Qxe2 Qc7
24 cxd7 Bxa1 25 Rxa1 Nxd7.

22 Rxb6
23 Rac1 Na4!
24 Qe3

24 f3? exf3 25 Rxf3 Be8
26 Qe3 Nbd7.

24 Nc5
25 f3 exf3??

(1) 25 ... f5? 26 Qg5
(threatening Qd8)
(2) 25 ... Be8! 26 fxe4 N8d7
followed by Ne5 with an
unclear position.

26 Rxf3 Be5

26 ... Kf8 27 Rf1 Be8
28 Rxf7! Bxf7 29 Qf4 Bd4+
30 Kg2 (with clear advantage
for White).

27 Qg5

Threat Qd8.

27 f6

Only move.

28 Rxf6! N8a6

(1) 28 ... Ne4 29 Rxf6+;
(2) 28 ... Kg7 29 Rf1;

(3) 28 ... Bd4+ 29 Kg2 Ne4
30 Rxf6+ hxf6 31 Qxf6+ Bg7
32 Qxe4

(4) 28 ... Bxf6 29 Qxf6 N8a6,
(4a) 30 bxa6?! Rf8 31 Qd4
(with an unclear position;
(4b) 30 Rf1! Nc7 (or Nb4)
31 Qf7+ Kh8 32 Qe7 (threat-
ening Rf8 or Rf7) (with
clear advantage).

29 Rcf1! Bd4+

(1) 29 ... Be8? 30 Rf8+ Kg7
31 Qe7+ Kh6 32 g5 mate.

(2) 29 ... Bxf6 30 Qxf6 Nc7
(Nb4) 31 Qf7+ Kh8 32 Qe7,
(2a) 32 ... Kg8 33 Rf7 N7e6
34 dxe6 Nxe6 35 Qxd7 (with
clear advantage); (2b) 32 ...
Rg8 33 Rf7 (with clear
advantage)

(3) 29 ... Nc7 (Nb4) 30 Rf7!
(threat Qh6) 30 ... Bg7 (only
move) (30 ... Ne8 31 Rf8+),
(3a) 31 Qe7 Ne8 32 Rf8+
(clear advantage),
(3b) 31 Rxf7+ Kg7 32 Qf6+
Kg8 33 Qf7+ (clear
advantage),

(4) 29 ... Ne4 30 Rxf6+ Kh8
(30 ... hxf6 31 Qxf6+ [clear
advantage]) 31 Qe7 hxf6
32 Rf7.

30 Kg2

Better is 30 Kh1!

30 Bxf6

31 Qxf6 Nc7

31 ... Re8!? 32 Qf7+ Kh8
33 bxa6 Rxe2+ 34 Kf3 Re8
35 Re1! threatening Re7,
with a clear advantage.

32 Qf7+ Kh8
33 Qe7
1 0

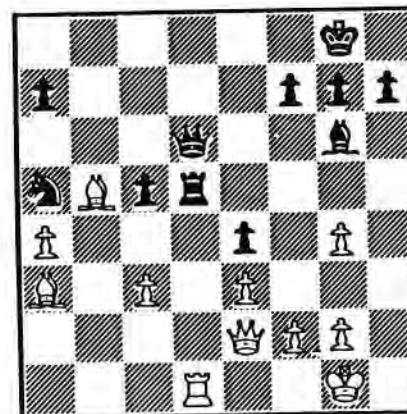
33 ... Re8 34 Rf8+



Andrew Muir also produced a
"bolt from the blue" in his
game with Iceland. In this
instance Andrew's move was
also strong.

Position after 24 moves:

Black; A Karason (Iceland)



White; A Muir (Scotland)

The game continued, when
Andrew unleashed..

25 Rd4!!

Now Andrew points out that
Nc6 was forced with the
following continuation 25 ...
Nc6 26 Bxc6 Qxc6 27 Qc4
Rxd4 28 cxd4 (or exd4) and
White wins the c-pawn.
Certainly Black's position
is poor but with bishops of
opposite colour he must have
some drawing chances. At
first I thought f6 before
Nc6 was better. The idea is
to meet Qc4 with Bf7. For
example, if 25 ... f6 26 Bc4
Nxc4 27 Qxc4 Bf7 28 Rxd5
Qxd5 29 Qxd5 Bxd5 30 Bxc5
allows Black to draw even
though a pawn down.
However, after 25 ... f6
26 Qd1 wins. For example,
if 26 ... Bf7 27 Rxd5 Qxd5
(not Bxd5?? 28 c4) 28 Qxd5
Bxd5 29 Bxc5 and White is
again a pawn up, but also
has the advantage of the two
bishops.

Anyway the game continued..

25 cxd4??
26 Bxd6 d3
27 Bxd3!!

Black resigned because if
27 ... exd3 28 Qf3 wins
easily.

3rd NORTH ATLANTIC TEAM TOURNAMENT

BOARD 1			1	2	3	4	5	6	7	8	9	10	11	Pts
1	DM MacLeod	Can	*				½						½	
2	JM Masurel	Fra		*				½			1	½		
3	AJ Muir	SCO			*					1	½		½	
4	R Crusi	Spa				*	½						½	
5	K Dehmelt	USA	½				*		½					
6	MW Wills	Eng		½	½			*		½	1		½	
7	D Orseth	Nor							*	½	1			
8	AO Karason	Ice			0			½	½	*	1			
9	M Thomas	Wal		0	½			0	0	0	*	½	½	
10	A Oliveira	Por		½								*		
11	AT Ludgate	Irl	½		½	½		½			½		*	

BOARD 2			1	2	3	4	5	6	7	8	9	10	11	Pts
1	Z Sarosy	Can	*								1			
2	S Vinot	Fra		*					½		1			
3	CA MacNab	SCO			*		1	0			1			
4	F Ivañez	Spa				*				0	1			
5	EE Liebowitz	USA			0		*				1			
6	T Thomas	Eng			1			*			1	1	1	
7	KW Strand	Nor		½					*	½	1		1	
8	B Thorbergsson	Ice				1				½	*	1		
9	M Williams	Wal	0	0	0	0	0	0	0	0	*	0	0	
10	C Quaresma	Por						0			1	*		
11	TD Harding	Irl					0	0			1		*	

BOARD 3			1	2	3	4	5	6	7	8	9	10	11	Pts
1	K Widmann	Can	*									1		
2	J de Lagontrie	Fra		*	½						1	1		
3	PM Giulian	SCO		½	*			½			1	1	½	
4	JL Bernal	Spa				*					1	1		
5	E Osbun	USA					*	1				1		
6	AM Stewart	Eng			½		0	*			½	1		
7	T Strand	Nor							*			1		
8	G Halldorsson	Ice								*		1		
9	G Sinnett	Wal		0	0	0		½			*	1	0	
10	C Santos	Por	0	0	0	0	0	0	0	0	*	0		
11	E Gibney	Irl			½						1	1	*	

BOARD 4			1	2	3	4	5	6	7	8	9	10	11	Pts
1	S Boyd	Can	*										½	
2	A Wallyn	Fra		*	0			½						
3	DA Kilgour	SCO		1	*			1	½	0		½		1
4	R Montecatine	Spa				*								
5	ES Martinovsky	USA			0		*							
6	PF Timson	Eng		½	½			*				1		
7	V Taksrud	Nor			1				*				0	
8	G Gislasen	Ice								*	½			
9	GH Phillips	Wal			½			0		½	*			
10	F Cleto	Por	½						1				*	
11	JF Gibson	Irl			0								*	

BOARD 5			1	2	3	4	5	6	7	8	9	10	11	Pts
1	J Armstrong	Can	*							½		½		
2	JL Maurel	Fra		*						½	½		1	
3	TJ Craig	SCO			*					½	½	½		½
4	A Gude	Spa				*								
5	D Kopec	USA					*				0			
6	PJ Sowray	Eng						*	1	1	1		1	
7	E Iversland	Nor	½	½	½			0	*	0	½	1	0	
8	E Thorsteinsson	Ice			½		1	0	1	*	1		½	
9	MJ Griffiths	Wal	½		½			0	½	0	*			
10	F Mendes	Por						0		0		*		
11	R Montgomery	Irl		0	½			0	1	½			*	

BOARD 6			1	2	3	4	5	6	7	8	9	10	11	Pts
1	M Edelstein	Can	*			0		0						
2	P Danzanvilliers	Fra		*			0						½	
3	GR Sprott	SCO			*			0		0	½		½	
4	F Casares	Spa	1			*					0			
5	I Golyak	USA		1			*				1	½		
6	M Read	Eng	1		1			*	1		1		1	
7	H Theting	Nor						0	*					
8	A Karlsson	Ice			1					*				
9	D Guy	Wal			½	1	0	0			*			
10	J Gongalves	Por					½					*	½	
11	F Coll	Irl			½			0				½	*	

BOARD 7		1	2	3	4	5	6	7	8	9	10	11	Pts
1	L Neubauer	Can	*										
2	A Negre	Fra		*	½	½			½	½		½	
3	GD Pyrich	Scot		½	*		½		1			½	
4	M Suárez	Spa		½		*							
5	CA Haessler	USA				*							
6	DJR Barnes	Eng			½		*	0		1		1	
7	T Johansen	Nor					1	*		1		1	
8	B Magnusson	Ice		½	0				*	0			
9	CJ Grier	Wal		½			0	0	1	*		½	
10	P Sampaio	Por									*		
11	J Killane	Irl		½	½		0	0		½		*	

BOARD 8		1	2	3	4	5	6	7	8	9	10	11	Pts
1	AB de Vriendt	Can	*							½			
2	VM Goasdoue	Fra		*	0	0		1		½			
3	GWG Livie	Scot		1	*			1	½				
4	P Garcia	Spa		1		*						1	
5	JP Voth	USA				*							
6	AJ Slinger	Eng		0			*	1		1			
7	ET Gullaksen	Nor			0		0	*				1	
8	G Hannesson	Ice			½				*		½		
9	K Scantlebury	Wal	½	½			0			*		½	
10	J Bray	Por							½		*		
11	B Gallagher	Irl			0			0		½		*	

BOARD 9		1	2	3	4	5	6	7	8	9	10	11	Pts
1	J Pouliot	Can	*		½			0					
2	D Troffiguer	Fra		*									
3	IS Campbell	Scot	½		*		0	0			½		
4	F Pérez	Spa				*				½			
5	LB Owen	USA			1		*						
6	PW Hempson	Eng			1			*	1				
7	M Klingen	Nor	1				0	*	½				
8	B Sigurjonsson	Ice			½			½	*	½			1
9	J Whittaker	Wal			½				½	*			0
10	C Bajouco	Por									*		
11	F Humphrys	Irl						0	1			*	

BOARD 10		1	2	3	4	5	6	7	8	9	10	11	Pts
1	H King	Can	*										
2	J Derouineau	Fra		*			0	0		1			
3	JAB Stevenson	Scot			*		1			1			
4	C Gil	Spa				*	1						
5	RD Weiss	USA					*						
6	MW Wood	Eng		1	0	0		*	½		½		½
7	A Larsen	Nor		1				½	*	0	1		
8	JA Halldorsson	Ice							1	*			
9	P Bowers	Wal		0	0			½	0		*	0	1
10	JJ Neves	Por									1	*	
11	I Cantwell	Irl						½		0			*

3rd NORTH ATLANTIC TEAM TOURNAMENT

Full cross-tables for this event appear above. The current totals for each team, as provided by Tournament Secretary, Carlos Flores (Spain), are:

	Points scored	Games completed	%
1. England	29	40	72.5
2. Spain	9	13	69.2
3. Iceland	16	26	61.5
4. USA	8	13	61.5
5. Scotland	23	39	59.0
6. Norway	18	32	56.3
7. France	13	25	52.0
8. Canada	5½	12	45.8
9. Ireland	12½	32	39.1
10. Portugal	6	20	30.0
11. Wales	13	53	24.5

Total number of games per team = 100

Regrettably, Portugal have defaulted all games on board 3 and Wales all games on board 2. USA, Spain and Canada have completed less than 15% of their games, whereas Wales, England and Scotland are nearing completion of half of their total games.

Scotland

Poland

Scotland

New Zealand

- 1 A P Borwell
- 2 G D Pyrich
- 3 N A Down
- 4 A T Hislop
- 5 G W G Livie
- 6 G E Wallwork
- 7 G A Morton
- 8 D M Livie
- 9 K W C Stewart
- 10 A D Kilgariff
- 11 A G Stalker
- 12 I P Whittaker
- 13 T Thomson
- 14 C McKay
- 15 D Crichton
- 16 D J Savage
- 17 N R McEwan
- 18 A Nisbet
- 19 Mrs EA Hartford
- 20 J P E Jack
- 21 J R Fisher
- 22 M F Pearce
- 23 T McMorran
- 24 I W S Mitchell
- 25 D G McRoberts
- 26 D R Cumming
- 27 D B McGarva
- 28 J Anderson
- 29 R Dowson
- 30 C A Macgregor

- J Jablonski
- W Bielecki
- R Kujawski
- J Ciesielski
- K Marcinkowski
- K Myslowski
- H Kubiczek
- J Szklarczyk
- M Kokosinski
- A Cyrus
- D Fraczek
- M Barczynski
- K Kujawski
- S Gorkiewicz
- L Marusiak
- M Ciupinski
- M Zvoron
- R Starnik
- R Marczak
- S Turlej
- J Dziel
- J Turczynowicz
- T Brus
- F Stachowicz
- T Kirylo
- P Dzimek
- M Garbacki
- W Kozlowski
- Z Kulesza
- Dr AP Wasiluk

- 1 G D Pyrich
- 2 G E Wallwork
- 3 A T Hislop
- 4 N A Down
- 5 T Thomson
- 6 K W C Stewart
- 7 A Hind
- 8 A W I Campbell
- 9 A D Kilgariff
- 10 A G Stalker
- 11 D J Savage
- 12 N R McEwan
- 13 Mrs EA Hartford
- 14 T McMorran
- 15 J R Fisher
- 16 S MacGilchrist
- 17 I W S Mitchell
- 18 D R Cumming
- 19 D G McRoberts
- 20 R Dowson

- M Noble
- B Sinclair
- C Mold
- R Mitchell
- W, Wiederkehr
- I M Sims
- G Lovelock
- D Beattie
- S Cameron
- J W Maxwell
- E Roberts
- A Winship
- B Williams
- M Rocks
- E Swayne
- A Sharko
- W Anderson
- J Frederikson
- L Purvis
- D Heperi

Scotland

Algeria

- 1 N Down
- 2 A J Shaw
- 3 G E Wallwork
- 4 G A Morton
- 5 K W C Stewart
- 6 A G Stalker
- 7 I P Whittaker
- 8 C McKay
- 9 A Nisbet
- 10 Mrs EA Hartford
- 11 I W S Mitchell
- 12 S J Baczkowski
- 13 J Anderson
- 14 D B McGarva
- 15 D R Cumming

- L Meslem
- N Hannoun
- A Chorfa
- M Abdelatif
- M Selmi
- K Douaouria
- N Metali
- D Bankiar
- M Kahlouch
- A Rekek
- T Bachir
- M Djelili
- K Hammoudi
- K Chougui
- T Bentaleb

Scotland

Luxembourg

- 1 A P Borwell
- 2 G D Pyrich
- 3 G W G Livie
- 4 K W C Stewart
- 5 A G Stalker
- 6 A Nisbet
- 7 A W I Campbell
- 8 Mrs EA Hartford
- 9 M F Pearce
- 10 I W S Mitchell
- 11 S J Baczkowski
- 12 D R Cumming

- N Stull
- T Klauner
- J-P Goerens
- A Piscitelli
- R Ludewig
- J Hentges
- F Christophe
- V Neyens
- G Benick
- R Bernard
- M Knerr
- M Dohm

SCOTTISH CCA MAGAZINE INVITATION TOURNEY

SECTION A IM = 7^{pts}

	1	2	3	4	5	6	7	8	9	10	11	12	13	14	15
1 D JENKINS (SCO) 2385	1/2	0	0			0	1	0	1/2	0		-	1/2		
2 T de RUITER (NLD) 2505	1/2	1/2	1	0	0			0	1/2	0		-		1/2	
3 J HARTUNG-NIELSEN (DEN) 2495	1	1/2			1/2			1/2	1	1/2	1/2	1/2	-	1/2	1
4 O REINEMO (NOR) 2425	1	0		1	0	0	0	0	0	0	1/2	1/2	-	0	
5 A PRYSTENSKI (CAN) 2405		1	0		0				0	0			-	1	
6 F FABRI (HUN) 2515		1	1/2	1	1						1		-		
7 R CALLAGHAN Jar (USA) 2500	1							1/2	1/2				-		
8 J KRISTINSSON (ICB) 2430	0	1/2	1						0	0			-	1/2	1/2
9 C CHANDLER (ENG) 2445	1	1	0	1			1/2			1/2	0	0	-		1
10 P GIULIAN (SCO) 2395	1/2	1/2	1/2		1			1	1/2		1/2		-	1/2	
11 D KILGOUR (SCO) 2410	1		1/2	1/2	1	0	1/2	1	1	1/2		0	-	1	1
12 M BAUER (BRD) 2415			1/2	1/2					1		1		-	1/2	
13 G den BROEDER (BLD) 2440	-	-	-	-	-	-	-	-	-	-	-	-	-	-	-
14 A BORVELL (SCO) 2295	1/2		1/2	1	0			1/2		1/2	0	1/2	-		
15 R WIKMAN (FIN) 2385		1/2	0					1/2	0	0	0		-		

SECTION B IM = 9^{pts}

	1	2	3	4	5	6	7	8	9	10	11	12	13	14	15
1 G PYRICH (SCO) 2225			1/2	1/2	1/2	1/2		1/2		1	1	1/2	1/2	1	0
2 G RICKERS (BRD) 2375			1/2		1/2							1/2	1/2		
3 Dr J VANDORFFY (HUN) 2415	1/2	1/2		1/2	1/2			1/2	1/2	1				1/2	
4 T GREINER (USA) 2375	1/2	1/2				1/2		1/2		1/2	0				
5 Dr V KARLSSON (ICB) 2375	1/2	1/2	1/2			0		1	1/2	1	1/2	0		0	
6 A ROS (DEN) 2395	1/2			1/2	1			1/2	1		1				
7 A MOSKO KOIVISTO (FIN) 2385												1/2	1/2		
8 B MARTIN (SCO) 2320	1/2	1/2	1/2	0	1/2			1/2	1/2	1	0	1/2		1/2	
9 T CRAIG (SCO) 2290			1/2	1/2	0		1/2		1	0		1/2	1/2		
10 L PATTERSON (CAN) 2290	0	0	1/2	0			1/2	0		1/2	0				
11 I CAMPBELL (SCO) 2310	0			1/2	0		0	1	1/2		1/2	1/2	0	1/2	
12 S TRICHMISTER (OST) 2395	1/2	1/2		1	1		1/2	1		1	1/2				1
13 R BEECHAN (SCO) 2280	1/2	1/2					1/2	1/2		1/2		1/2		1/2	
14 K KOISTINEN (FIN) 2360	0		1/2		1		1/2		1/2		1		1/2		
15 P VAGG (AUS) 2200	1							1/2		1/2	0				

LADIES SECTION IM = 8^{pts}

	1	2	3	4	5	6	7	8	9	10	11	12	13	14	15
1 M LJUBICIC () (2175)															
2 R GIULIAN (SCO) (2050)															
3 S DJURIC (YUG) 2175															
4 E CSOK-BENKETHNE (HUN) 2115															
5 E HARTFORD (SCO) 1900															
6 E CYNOLTER BOGNARNE (HUN) 2005															
7 D COOPER (VAL) 2250															
8 M HORVATH (HUN) (1900)															
9 A SCHOL-GRIN (NLD) 1910															
10 C HBRI (AUS) (1900)															
11 E D KRASIKOVA (SU) 2100															
12 E MOZNA-HOJDAROVA (CZE) 2340															
13 R I NEVEDNITSCHAJA (SU) 2320															
14 DR T HARGITAY (HUN) 1900															
15 DR C ROSENFELD (USA) 2200															

WORLD CHAMPIONSHIP XIV 3/4 FINAL

Section 3				01	02	03	04	05	06	07	08	09	10	11	12	13	14	15
1	V-M ANTON	BRD	2615	GM			1	1	1	1			1	1	1/2	1/2	1	1
2	D M BRYSON	SCO	2565	GM			0		0	1		1/2	1/2	1	0	1	1	
3	V G RUKHLIN	URS	2475	-	0			1/2	0	1/2			1/2		1/2	1/2		
4	J E STEINSAPIR	URS	2515	-	0	1	1/2		0	0		1/2	1/2	1	1		1/2	1
5	A P BODISKO	URS	2430	-	0		1	1		1/2		1	1/2	1	1/2		1	0
6	S V PEDERSEN	DEN	2550	IM	0	1	1/2	1	1/2			1/2	1/2	1/2	1/2	1/2	1	1/2
7	C A BLANCO	GM	2440	-		0								1/2		1		
8	J GARRIGA	ESP	2565	IM				1/2	0	1/2			1/2		1/2	1/2	1	0
9	Y V SADOVOJ	URS	2330	-	0	1/2		1/2	1/2	1/2		1/2		1/2	1		1	1/2
10	L V CHEPURNOIJ	URS	2475	-	0	1/2	1/2	0	0	1/2			1/2		1/2		1	1/2
11	J SORRI	FIN	2510	GM	1/2	0		0	1/2	1/2	1/2	1/2	0	1/2		1/2	1	1
12	M LECROQ	FRA	2590	IM	1/2	1	1/2			1/2		1/2			1/2		1	1
13	M N SHER	URS	2500	IM	-	-	1/2	1/2	-	-	-	-	-	-	-	-	-	1/2
14	G C v PERLO	NLD	2510	GM	0	0			0	1				0	0	1		
15	V A ANTONOV	URS	2530	-				0	1	1/2			1/2	1/2	1	0	1/2	

WORLD CHAMPIONSHIP XVII SEMI-FINAL

Section 8				01	02	03	04	05	06	07	08	09	10	11	12	13	14	15
1	D NILSSON	(SVE)	2045			0	0	1/2			0							
2	T RESOY	(NOR)	2380		1		1/2	0		1/2	1/2	1					1	
3	D A KILGOUR	(SCO)	2415		1	1/2					1/2	1				1/2	1	
4	C TEICHMANN	(CSR)	2370		1/2	1					1/2	1/2	1/2				1	
5	A A SWEREW	(URS)	2455							1/2		1/2						
6	L T TOLONEN	(URS)	2485			1/2			1/2		1/2							1/2
7	O L HANSEN	(DEN)	2280		1	1/2	1/2	1/2		1/2								
8	V P SIROTKIN	(URS)	2500															1/2
9	H PEREIRA	(POR)	(2200)			0	0	1/2	1/2									
10	B LOEFFLER	(BRD)	2385				1/2											
11	K GRAESER	(BRD)	(2200)															
12	E OSBUN	(USA)	2475				1/2											1
13	A KOBAYASHI	(JAP)	2390			0	0	0							0			
14	A J BANGIEV	(URS)	2445															
15	B P DONNELLY	(BAH)	2335								1/2	1/2						

KIRJESHAKKI - 25 YEARS ANNIVERSARY
FINLAND CC MAGAZINE

				01	02	03	04	05	06	07	08	09	10	11	12	13	14	15
1	F BAUMBACH	BRD	2525	GM		1/2	1/2	1/2	1/2	0	1/2	1	0	1/2	0	1	1/2	1/2
2	M PIUVA	FIN	2445	-	1/2		0	1/2	1	1/2	1	1	1/2	1	1/2	1/2		1
3	D M BRYSON	SCO	2565	GM	1/2	1		1	1	1	1	1/2	0	1	0	1/2	1/2	1/2
4	D KOSKINEN	FIN	2430	GM	1/2	1/2	0			1/2	1	0	0	1	0	1/2	0	0
5	J KONDALI	JUG	2500	GM	1/2	0	0			0	1	1	1/2	1	1	1	0	1/2
6	K H NIENHUIS	NLD	2430	IM	1	1/2	0	1/2	1		1	1/2	0		1	1	1/2	0
7	K KAUNONEN	FIN	2465	IM	1/2	0	0	0	0	0		0	0	0	0	0	0	0
8	M GUDJEV	BUL	2605	IM	0	0	1/2	1	0	1/2	1		0	1	1	1	1	1/2
9	C MELEGHEGYI	HUN	2555	IM	1	1/2	1	1	1/2	1	1	1		1/2	1	1	1	1/2
10	S LETIC	JUG	2345	IM	1/2	0	0	0	0		1	0	1/2		0		1/2	0
11	N KARKER	BRD	2440	IM	1	1/2	1	1	0	0	1	0	0	1		1	0	1
12	E HINTIKKA	FIN	2440	IM	0	1/2	1/2	1/2	0	0	1	0	0	1	0		0	0
13	H BURGER	BRD	2555	IM	1/2		1/2	1	1	1/2	1	0	0	1/2	1	1		1
14	I A MOROZOV	URS	2325	GM	1/2				1/2	1	1	1/2	0	1	0	1	0	0
15	G RÄTY	FIN	2250	-		0	1/2	1	1/2	0	1	1	1/2	0	1	1		1

HOROVITZ MEMORIAL INTERNATIONAL TITLE TOURNAMENT

				01	02	03	04	05	06	07	08	09	10	11	12	13	14	15
1	K DEHMELT	(USA)	2450			0	1	1				1/2	0	0	-			
2	J de MAURO	(USA)	2540		1		1	1	1				1/2		-			
3	A DUNNE	(USA)	2435		0	0		1/2		0	1/2	0	0	-	0	0		0
4	I GOLYAK	(USA)	2430		0	0	1/2		1/2			0		1	-			
5	J JUNTUNEN	(FIN)	2420			0		1/2							-			0
6	A O KARASON	(ISD)	2430				1					1/2			-			1/2
7	D A KILGOUR	(SCO)	2410				1/2						1/2	1	1/2	-	1/2	1
8	P KINDL	(BRD)	2525		1/2					1/2				1/2	1	-	1/2	
9	G KUBACH	(USA)	2435		1	1/2	1	1			1/2			1	-			1/2
10	O NEUVONEN	(FIN)	2530							0	1/2	0			-			
11	E OSBUN	(USA)	2455		1		1	0			1/2	0			-			1/2
12	P SPINATH	(CAN)	2360		-	-	-	-	-	-	-	-	-	-	-	-	-	-
13	H SKARKE	(BRD)	2475				1			1/2	1/2				-			1
14	T TRONHJEM	(DEN)	2500							0					-	0		
15	G WALKER	(SWZ)	2405				1		1	1/2			1/2	1/2	-			

JOHN KELLNER MEMORIAL AUSTRALIAN CCL TOURNAMENT

Section "A"			01	02	03	04	05	06	07	08	09	10	11	12	13	14	15
1	M J READ	(ENG) 2440	1/2	1/2	1/2		1/2	1/2	1	1	1		1/2	1/2		0	
2	P STIGGAR	(NOR) 2475	1/2		1	1		1/2	1/2	1	1		1/2		1	1/2	
3	C B JONES	(USA) 2555	1/2	0		1	1/2	1	0		1			1/2	1/2		
4	D W LOVEJOY	(AUS) 2240	1/2	0	0		1	0	1/2	1	1	0		1	1/2	1/2	1/2
5	A PRYSTENSKI	(CAN) 2405			1/2	0		1	0		1		0	1	0	1/2	0
6	G WEST	(AUS) (2200)	1/2	1/2	0	1	0		1	1/2	1		1/2	1	1	1/2	1/2
7	P M GIULIAN	(SCO) 2395	1/2	1/2	1	1/2	1	0		1	1		1/2	1/2	1/2	1/2	
8	R WIKMAN	(FIN) 2385	0	0		0		1/2			1			1/2	0		1/2
9	J-G ESTIOT	(AUS) (2200)	0	0	0	0	0	0	0	0	0	0	0	0	0	0	0
10	G PELI	(ISL) 2460	0			1			0		1			1	1/2		
11	J de MAURO	(USA) 2540		1/2			1	1/2			1			1			1
12	K J HARRISON	(AUS) 2330	1/2			0	0	0	1/2	1/2	1	0	0		1/2		
13	V PEDERSEN	(AUS) (2200)	1/2		1/2	1/2	1	0	1/2	1	1	1/2		1/2		1/2	1
14	R CHAPMAN	(NZD) 2485		0		1/2	1/2	1/2	1/2		1				1/2		0
15	C PARE	(CAN) 2395	1	1/2	1/2	1/2	1	1/2	1/2	1/2	1		0		0	1	

JOHN KELLNER MEMORIAL AUSTRALIAN CCL TOURNAMENT

Section "B"			01	02	03	04	05	06	07	08	09	10	11	12	13	14	15
1	BKD DEHMELT	(USA) 2450		1						0	1		1/2	1/2	1	1/2	
2	A HARIMAN	(AUS) (2200)	0		0	0	0	0	0	0	0	0	0	0	0	0	0
3	H F GLASER	(SIN) 2435		1		1	1/2			1/2	1/2	1/2			1		1
4	S CHOQUINARD	(CAN) 2445		1	0			0	0		1/2	1					0
5	S J HENRI	(AUS) 2355		1	1/2					1/2	1/2	1/2	1				
6	M PRIZANT	(ENG) 2535		1		1				1	1/2	1		1/2		1	
7	E FLACKER	(BRD) 2435		1		1					1				1/2	1	
8	M EBELING	(FIN) 2460	1	1	1/2		1/2	0				1/2	1/2			1	
9	P DEWAR	(AUS) (2200)	0	1	1/2	1/2	1/2	1/2				1/2	0		0	1/2	
10	S R GILLAM	(SCO) 2395		1	1/2	0		0	0	1/2			0	1/2	1	0	0
11	M F NOBLE	(NZD) 2280	1/2	1			1/2			1/2	1/2	1		1/2		1/2	1
12	G METTYEAR	(AUS) (2200)		1			0	1/2			1	1/2	1/2				0
13	A M LEVINE	(USA) 2390	1/2	1	0							0					1/2
14	J KOLENBRANDER	(NLD) 2420	0	1				0	1/2	0	1	1	1/2				
15	H J LASSEN	(DEN) 2490	1/2	1	0	1			0		1/2	1	0	1	1/2		

FEDOR BOHATIRCHUK MEMORIAL CANADIAN CC TOURNAMENT

			01	02	03	04	05	06	07	08	09	10	11	12	13	14	15
1	W GROISS	(DST) 2410		1/2	1	1/2	0	1	1/2	1/2	1/2	1/2		1/2	0	1/2	
2	Y GELEMEROV	(BUL) 2440	1/2		1	1				1/2	0	1/2	1/2	1/2	0		
3	D GERASSIMOV	(BUL) 2415	0	0		0		1				0	0		0		
4	M HEITMANN	(BRD) 2425	1/2	0	1		1	1/2		1/2	1	1		1	1	1	1
5	W TÖNNEMANN	(BRD) 2435	1			0			1	1/2		1	1/2	1/2	0	0	
6	S CHOQUINARD	(CAN) 2445	0		0	1/2				1/2	1	1/2	0	0	0		1
7	R SIEMMS	(CAN) 2355	1/2				0					0			0		
8	P SPINATH	(CAN) 2360	1/2	1/2		1/2	1/2	1/2			1/2	1/2		1/2	1		
9	W MATHES	(BRD) 2375	1/2	1		0		0		1/2					0		
10	D ERIKSEN	(DEN) 2390	1/2	1/2	1	0	0	1/2	1	1/2					0	1/2	0
11	J PRATS	(ESP) 2370		1/2	1				1							1/2	
12	PM GIULIAN	(SCO) 2395	1/2	1/2		0	1/2	1		1/2	1					1/2	
13	W BOOM	(NLD) 2455	1	1	1	0	1	1	1	0	1	1/2	1/2	1/2			
14	R CHAPMAN	(NZD) 2485	1/2				1					1					
15	J PREGAL	(ARG) 2375				0	0										



SI EDITRICE

CORRESPONDENCE CHESS YEARBOOK

No. 3 November 1991
published by and available from:
SI Editrice, Via Marsala 45,
40126 Bologna, Italy.

Price: \$32 per edition or
\$90 per annum (3 issues)

The third edition of this excellent addition to CC journals contains 350 games, openings articles on the Ruy Lopez - Marshall, French - Winawer 7 Qg4 and Sicilian Najdorf - Goteberg Variation. There are results/progress tables of international CC tournaments and the full ICCF rating list. The quality and print is very good and the accuracy of games and references is improving with each edition.

For any new CC journal, it is desirable for it to develop good relationships with ICCF, all officials and existing CC publications, such as Fernschach. However, there are 8 current or recent members of the ICCF Presidium listed as collaborators/contributors - not bad for Year 1!

This new Yearbook deserves the support of CC players worldwide and its Informator style publication of CC games, events and news is to be highly commended.

"100 CLUB"

This is a club for members who really would like to help with the development of the Scottish Correspondence Chess Association. Currently there are almost 80 units issued but we need to increase this to 100 - please help us!

The subscription is only £1 per month per unit, with two prizes each month currently approx £24 and £16 respectively - members may apply for more than one unit if they so wish!

A monthly bankers order form can be obtained from our Treasurer, George Pyrich, 53 Dunnikier Road, Kirkcaldy, Fife, KY1 2RL. If you return it to him before the 10th of the month, then you will be eligible to be in the draw for that month.

Recent winners:

Sept: A Borwell, G Pyrich
Oct: A Grant, S Murray
Nov: A McClelland, G Pyrich

Please send games (preferably annotated) to Games Editor:

George Pyrich,
53 Dunnikier Road,
Kirkcaldy,
Fife, KY1 2RL.

CHESS

Maxwell MacMillan CHESS is a big, bright and colourful 40-page A4 magazine with top quality features written by masters worldwide, with regular articles on Opening Theory, Innovations, End-games, Events, Combinations, How Good is Your Chess, Computer Chess, Prize Competitions, etc.

Each monthly issue costs £1.95 (annual subscription £21.95) and is available from newsagents, established chess suppliers or direct from Maxwell MacMillan Chess, London Road, Wheatley, Oxford, OX9 1YR, England.

READ SCOTTISH CHESS

including
GAMES AND POSITIONS ANNOTATED BY
PAUL MOTWANI I.M.
ENDGAME ARTICLES BY COLIN MCNAB I.M.
TEST YOUR CHESS BY RODDY MCKAY I.M.
FEATURE ARTICLES BY VARIOUS AUTHORS

Q. HOW MUCH DOES IT COST?

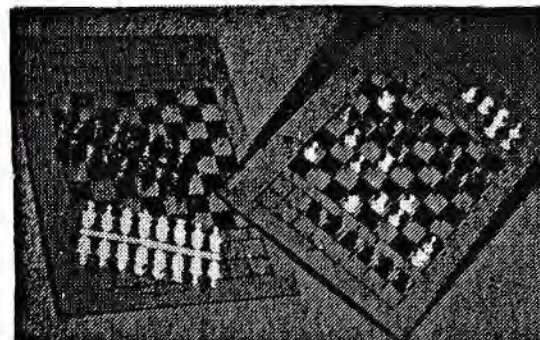
A. £8 PER ANNUM
OR £1.35 PER COPY

Q. HOW DO I SUBSCRIBE?

A. SEND YOUR NAME, ADDRESS AND FEE
TO CHESS SUPPLIERS (SCOTLAND) LTD.

CORRESPONDENCE CHESS STATIONERY

SCCA Correspondence Score Cards.....16.....	£1.10
SCCA International Correspondence Cards.....100.....	£3.25
Window Envelopes100.....	£1.80



CORRESPONDENCE SETS

as illustrated

Overall size 8.25" x 5.75"	
Plastic Pieces.....	£1.30
Supplied in Ring Binder	
with 12 sets.....	£15.60
or 10 sets.....	£13.60
or 8 sets.....	£11.60
Ring Binder only.....	£ 3.95

CHESS INFORMANT

IMPORTED DIRECT FROM
YUGOSLAVIA !!
SAME DAY DISPATCH
TO OUR STANDING ORDER
CUSTOMERS

ENSURE THAT YOU
RECEIVE YOUR COPY
PROMPTLY

ORDER YOUR COPY
OR BOOK A
SUBSCRIPTION NOW

REMARKABLE VALUE AT
£13.50 POST FREE
FOR CURRENT ISSUES

Do you have problems choosing
a gift for your Chess playing
relatives or friends?

Yes !?

Solve your problems by
choosing from our range of

Gift Vouchers

and let the lucky person make
their own selection from our
Comprehensive Catalogue

Each voucher supplied with a free

Gift Card

featuring an attractive photograph
of past Chess Masters.

Available for £5 £10 £20

AVAILABLE FROM : CHESS SUPPLIERS (SCOTLAND) LTD.
P.O. BOX 67, 15 HOPE STREET, GLASGOW G2 6AQ.
TEL: 041-248-2887

CORRESPONDENCE CHESS STATIONERY

100 £1.50
 100 £3.25
 100 £7.75

CORRESPONDENCE SETS

as illustrated

Overall size 8.25" x 2.75"

Plastic pieces included in King Windsor

with 12 sets £12.50
 or 20 sets £17.50
 or 3 sets £2.50

To solve your problems choosing a gift for your chess playing relative or friend?

Life?

Take your problem by choosing from our range of

Life

and let the lady person who drafts our selection from our Correspondence Catalogue

Each member entitled with a free

Life Card

featuring an attractive photograph of your chess partner.

Available for £2.50

CHESS IMPERIAL

IMPORTED DIRECT FROM

YORKSHIRE

TO OUR STANDING ORDER

CUSTOMERS

ORDER YOUR COPY

OR MAKE A

SUBSCRIPTION NOW

REMARKABLE VALUE AT

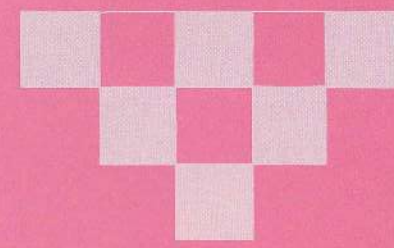
£11.50 POST FREE

FOR CURRENT ISSUES

AVAILABLE FROM: CHESS SUPPLIERS (SCOTLAND) LTD.
 P.O. BOX 57, 15 HOWE STREET, GLASGOW G2 8AG.
 TEL: 041-249-2887



MAKE THE RIGHT
MOVE



WE CAN HELP



General Accident

World Headquarters, Pitheavlis, Perth, Scotland PH2 0NH