

*Scottish
Correspondence
Chess*



SCOTTISH CORRESPONDENCE CHESS ASSOCIATION

Office-Bearers 1993-94

		Tel No
President (Magazine Editor)	Alan P. Borwell 8 Wheatfield Avenue, Inchtute, Perthshire PH14 9RX	0828-86556 Fax 0828-86004
Vice President	Philip Giulian 10 Broomfield Ave, Newton Mearns, Glasgow G77 5HR	041-639-1234
Secretary	Alan Hind 6 Gordon Drive, Netherlee, Glasgow G44 3TF	041-637-4462
Treasurer	Iain S. Campbell, 32 Lomond Drive, Newton Mearns, Glasgow G77 6LR	041-639-3753
Assistant Secretary	Douglas M. Livie, 17 Whittliemuir Avenue, Muirend, Glasgow G44 3HU	041-637-1936
International Secy (& Games Editor)	George D. Pyrich, 53 Dunnikier Road, Kirkcaldy, Fife, KY1 2RL	0592-204133
Asst International Secretary	Colin A. Macgregor, Top Flat Left, 9 Argyle Street, Paisley PA1 2ET	041-887-6619
Grading Officer	Michael T. Dyer, 130 Millhouse Drive, Glasgow G20 0UF	041-946-5915
Asst Magazine Editor	Ian W.S. Mitchell, 54 Strathtay Road, Letham, Perth, PH1 2LZ	0738-38257
Publicity and Membership Officer	C. Richard Beecham, 28 Morris Road, Prestwick, Ayrshire, KA9 2JW.	0292-76984
Honorary Life Member	Bernard B. Partridge	
Life Members	D G Anderson, G M Anderson, K D Anderson, C R Beecham, P G Bennett, Prof G H Bird, A P Borwell, S Brady, D M Bryson, B W Chalmers, G G Chalmers, J Cox, T J Craig, D Crichton, D H Dempster, R Dickson, J Eadie, R Gibson, P M Giulian, A B Glass, J R Gracie, B W Grant, Dr M C Grayson, M A Hammett, Mrs E A Hartford, A T Hislop, W J Hutchison, R M Innes, J P E Jack, R Jackson, D M Jenkins, A D Kilgariff, D A Kilgour, D M Livie, G W G Livie, J P L Lumsden, K B McAlpine, J M MacArthur, A J McClelland, P McConnell, D McCracken, A McFadyen, Mrs. M McGhee, M E McGhee, D McKerracher, I A Mackintosh, T McMorran, J N McNeill, D G McRoberts, J McTaggart, I A Marks, I Marshall, I W S Mitchell, R Mitchell, G A Morton, A J Muir, J S Murray, Dr V A Nye, A J Norris, T Paterson, A Pearcey, V A Proudler, D R Reid, W S Roach, T Russell, D J Savage, J Seyfried, A J Shaw, G R Sprott, Dr K W C Stewart, M A Swystun, A Taylor, T A H Taylor, I Thompson, T Thomson, H M Walker, J Watson, W P Watson, T S Wickens, A Wilson.	

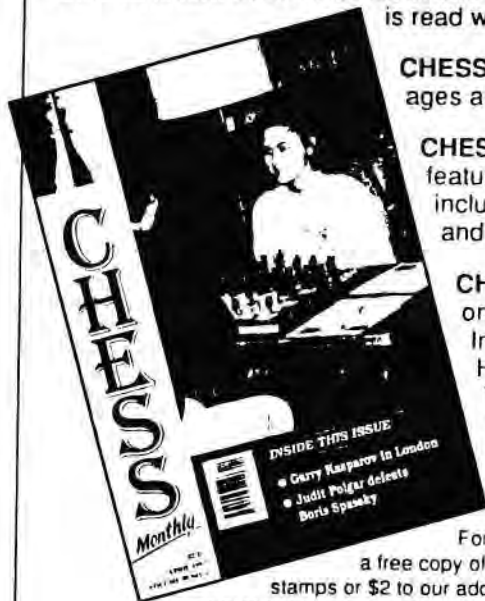
JULY 1993

No. 43 £2.25

'CHESS' MONTHLY MAGAZINE

"... now one of the world's most colourful and lively chess reviews, and chess enthusiasts would derive excellent practice from the very tough puzzles set each month."
The Times

CHESS is now established as Britain's No 1 chess magazine and is read world wide.



CHESS is written for players of all ages and standards.

CHESS carries top quality features by Grandmasters, including Adams, Hodgson, King and Flear.

CHESS has regular features on Opening Theory, International News, How Good is Your Chess?, Tournament Reports, Book Reviews, Computer Chess - and much more!

For a sample issue of 'CHESS', and a free copy of our catalogue, please send £1 in stamps or \$2 to our address in London. This is a

specialist centre stocking the complete range of Cadogan chess titles, plus chess computers and software, chess sets and boards, chess clocks, score sheets and other equipment. It is also a tournament venue.

SUBSCRIPTION RATES

FOR 12 ISSUES PER YEAR

UK 1 year: £23.95; 2 years: £45.00

EUROPE 1 year: 29.95;
2 years: £56.95

USA/CANADA
(Airspeed, 2nd Class)
1 year: \$49.95; 2 years: \$95.00

REST OF WORLD

(Airmail): 1 year: £41.95 (\$80.00);
2 years: £80.00 (\$150.00)

(Surface): 1 year: £29.95 (\$60.00);
2 years: £56.00 (\$110.00)

Payment by cheque or credit card with number/expiry date.
Add £6 (\$12) if not drawn on UK bank or UK branch of foreign bank.

CHESS & BRIDGE LTD, 369 EUSTON ROAD, LONDON NW1 3AR.

London's Chess and Bridge Centre

Tel: 071-388 2404 Fax: 071-388 2407

EDITORIAL

by Alan Borwell

July 1993

With the new season now well underway, the crosstables for all SCCA events are included in this edition, using the new layouts. I understand that some readers were disappointed that these did not appear in the last edition, but they were not all available prior to that Magazine going for printing.

The Scottish CCA AGM was held recently with almost a full Committee in attendance! In the absence of any other members, it was not surprising that they were re-elected "en bloc"! The Minutes and the Accounts are on the next pages.

On the International scene, games are now in progress in the new Olympiad Final and Preliminary Groups. The ICCF Congress this year will be held in Gdansk, Poland, and will be attended by George Pyrich (as Scotland's Delegate) and myself. A report will be included in the November Magazine. The venue has now been decided for next year's ICCF Congress to be hosted in Scotland. It will be held in the Isle of Skye Hotel, Perth from 3rd to 11th September 1994 and it is hoped that there will be a record number of international delegates attending. They can be assured of a warm welcome and traditional Scottish hospitality!

The new venture which Moira and I have embarked upon, to provide you with a postal chess supplies service, is independent from the Scottish CCA but special terms are available to SCCA Members/Magazine Subscribers and orders placed with Qualitext Business Services will also benefit your Association financially.

Although no Secretarial Notes appear in this edition, Alan Hind joins me in wishing you all an enjoyable summer and continuing pleasure from your postal games and contacts both in Scotland and around the World.

Index of Contents

	Pages		Pages
Editorial	1	SCCA/ICCF Ratings	33/36
SCCA AGM Minutes	2/4	Bits 'n' Pieces	37/41
SCCA Accounts	6/9	Games Section	43/51
Championship/Candidates 91-93	10	Reader's Letter	51
Championship/Candidates 93-94	11	ICCF Tournaments	52/53
SCCA Tournaments 1993	12/15	World Championship Events	54
SCCA League 1993	16/17	FINJUB Tournaments	57
Scottish Open Tournaments	18	Friendly Internationals	58/59
SCCA Magazine Tournament	19/25	European Team Tourneys	60/63
Book Reviews	26/28	North Atlantic TT	64/67
Are the Rules Correct?	30/32	100 Club	68

Subscription Rates 1993/4 Life Member - £50; Annual Member - £10 (incl Magazine);
SCCA Magazine only - £6; Overseas subscribers - £8 (incl postage)

SCOTTISH CORRESPONDENCE CHESS ASSOCIATION

Minutes of the Annual General Meeting held in Rhuallan House, Giffnock, Glasgow on Sunday 6th June 1993 at 4 p.m.

Present: A.P. Borwell (President), C.R. Beecham, I.S. Campbell, P.M. Giulian, A. Hind, D.M. Livie, C.A. Macgregor, I.W.S. Mitchell and G.D. Pyrich.
Apologies: M.T. Dyer and R.A. Giulian.

President's Remarks

- The President offered a warm welcome to all those attending. He summarised the year's achievements concentrating on those of an international nature. In future years, he thought that a separate International Secretary's Report should be added as an Agenda item and that the President would simply open the meeting.
- International teams had been successful. Scotland had qualified for the Olympiad Final at only its second attempt, having been third in the qualifying section not too far behind the first two teams. Good performances had also been produced in the European and North Atlantic events. Colin Macgregor had been highly successful in arranging and handling friendly internationals. George Pyrich has had a good first year in the role of International Secretary and had attended the ICCF Congress in 1992.
- In individual accomplishments, Phil Giulian and David Kilgour had been awarded the IM title in Austria in 1992 and Alan Borwell had qualified for the IM title which should be awarded in Poland in 1993.
- Thanks were expressed to G.W.G. Livie who had controlled both sections A and B of the SCCA Magazine Tournament with F. Fabri (HUN) winning Section A and A. Ros (NLD) and S. Teichmeister (OST) Section B. Also thanks to Colin Macgregor who was controlling the Ladies Section, which had not been without problems.
- Entries were currently being taken for World Semi-Final XX with Scottish qualifiers Phil Giulian and Douglas Bryson (who has unfortunately had to turn it down). Scotland would also have 2 nominations and a reserve.
- Arrangements were well in hand for the Association to host the ICCF Congress in Perth during the week commencing 3rd September 1994.
- On the domestic front, congratulations to Paul McGowan (Scottish Champion), Knights of the Square Table and Streatham & Brixton (Division 1 winners) and W.D. Taylor (1st Scottish Open winner).

The Minutes of the last Annual General Meeting held on 14th June 1992, which were published in Magazine No. 41, were approved.

Secretary's Report

The Secretary's Report made the following points:

- It had been a year of gradual progress. However, membership numbers had remained fairly static and there had been fewer enquiries during the year. Efforts must be made to increase numbers for 1993/94.
- The Magazine had reverted to production 3 times per annum. It continued to be of high quality and General Accident had agreed to continue with its printing.
- Entries via our Association to ICCF tournaments had been above expectation in our first full year of processing them.
- Finance remains healthy. Major expenditure would be incurred on the 1994 ICCF Congress but no exceptional fundraising was envisaged at this time. The Clydesdale Bank had again produced 50,000 international cards to contribute to our funds and we are extremely grateful for this sponsorship.
- Since last year, a new Rules Brochure had been produced and the Constitution redrafted, although the latter had still to be published.
- Also during the year, a new tournament format was introduced with 2 Candidates Sections, 1 game per opponent Premiers, and a new Minor tournament. So far the signs are that this has been beneficial.
- On a sad note, we record the death of one of our long-time members, Joseph Merrifield. Our commiserations to his family.

Treasurer's Report

The Treasurer presented unaudited accounts for the year to 31st March 1993 (see details on following pages).

Minor comments were made and movements year on year explained. Specific comments were:

- It was anticipated that revenue from the Magazine would increase with advertising obtained.
- International cards should contribute in excess of £800 to funds.
- ICCF Congress expenses had not been accrued in the accounts.
- It was the intention to have the accounts audited as soon as possible.

The accounts were accepted unanimously (subject to audit) and Iain Campbell was commended for his first year's work as Treasurer.

Election of Office-Bearers

The following were elected to the Executive Committee:

President	Alan P. Borwell
Vice President	Philip M. Giulian
Secretary	Alan Hind
Treasurer	Iain S. Campbell
Assistant Secretary	Douglas M. Livie
International Secretary	George D. Pyrich
Assistant International Secretary	Colin A. Macgregor
Grading Officer	Michael T. Dyer
Assistant Magazine Editor	Ian W.S. Mitchell
Publicity & Membership Officer	C. Richard Beecham

Thanks were duly given to all for the efforts made over the last year and for the entire Committee being prepared to serve for another year.

George Pyrich, as International Secretary, was elected as the Association's ICCF Delegate.

Election of Auditor

It was agreed that the present Auditor, Mr. Hamish Bell, be re-appointed for the ensuing year.

Subscriptions

It was unanimously agreed that annual membership (inclusive of Magazine subscription) be £10 for the ensuing season. Magazine subscription only would be £6 and overseas magazine subscription and league team player with magazine would be £8. All other fees remain as for last year.

It was further agreed that, as of next season, there would be no cash prizes. Medals and certificates will be awarded to prizewinners.

Any Other Business

It was formally agreed that, with effect from the Annual General Meeting in 1994, an International Secretary's Report would form part of the Agenda.

WHY NOT TRY INTERNATIONAL POSTAL CHESS?

You could start with a couple of games in friendly international matches. Just let Colin Macgregor know and he will arrange!

♦ Mr. C.A. Macgregor, Top Flat Left, 9 Argyle Street, Paisley, PA1 2ET

☎ 041-887-6619



The British Chess Magazine

Established 1881



CHESS SHOP

69 Masbro Road, Kensington, London W14 OLS

Phone: 071 603 2877

• BOOKS • EQUIPMENT • COMPUTERS • SOFTWARE

CHESS COMPUTERS - Our policy is to offer only the best in each class, and for correspondence players especially, we are happy to add our endorsement to both the 'dedicated' chess computer, the Berlin, and the PC program, Chess Genius...

Mephisto Berlin: GM Murray Chandler, when reviewing the Berlin for the BCM (12/92 edition) was sufficiently impressed to say "The top Mephistos are generally reckoned to be the Rolls Royces of the chess computer world.. " "It quickly became apparent that [the Berlin] possesses a sophisticated style of play.. a fast-thinking opponent whose positional play is of a consistently high calibre..." Wealth of features include 'background analysis' while you play through a game, and long-term memory storage for 50 complete or partial games. Price: £399. BCF estimate: 205 Slowplay; 225 Blitz.

Chess Genius: If you own a 386 IBM-compatible PC or better, the CHESS GENIUS PC program is the Chess Shop favourite, offering a strength and depth of play and analysis you will not have encountered before. Chess Genius has beaten GM's, IM's, achieved ratings of 2493 Elo, 2530 Elo... Phone us to find out more! Price £89.99. BCF estimate (on 386/25): BCF 210 Slowplay; BCF 230 Blitz.

EXCLUSIVE LIMITED OFFER TO SCC READERS ON BOTH THE
BERLIN AND CHESS GENIUS - PHONE US FOR DETAILS!

SUBSCRIBE TO THE BCM!

Writing in the Independent in June, Bill Hartston said "There can be no better history of tournament chess than a complete run of BCM, and the latest issues strike a happy balance between entertainment and information... the June issue (56 pages including cover) contains over 30 complete games, mostly annotated, and besides covering home and international tournaments has sections for correspondence play, problems and endgame studies... [At £23.50 for a year's subscription] the density of excellent material ensures good value..." SPECIAL OFFER TO SCC READERS - SUBSCRIBE TO THE BCM MENTIONING THIS AD, AND RECEIVE 15 EDITIONS FOR THE PRICE OF 12!! OFFER ENDS 30TH JULY 1993


**SCOTTISH CORRESPONDENCE CHESS ASSOCIATION
FINANCIAL ACCOUNTS FOR THE YEAR ENDED 31 MARCH 1993**

1992		GENERAL ACCOUNT INCOME	1993	
£	£		£	£
		MEMBERSHIP FEES		
375.00		Annual	438.00	
<u>137.57</u>		Life Members Fund	<u>159.90</u>	
512.57			597.90	
<u>44.00</u>	468.57	less Discount	<u>36.00</u>	561.90
		COMPETITION FEES		
510.00		Individual	487.00	
<u>87.00</u>		League	<u>96.00</u>	
597.00			583.00	
281.40		less Prizes	228.50	
<u>22.25</u>	293.35	Medals and Engraving	<u>131.50</u>	223.00
		MAGAZINE		
1010.36		Sales	788.00	
<u>175.00</u>		Adverts/Leaflets	<u>170.00</u>	
1185.36			958.00	
<u>1283.51</u>	(98.15)	less Expenses	<u>1306.18</u>	(348.18)
		3RD OPEN TOURNAMENT		
162.00		Entry Fees	-	
<u>89.10</u>	72.90	less Accrued Prizes	-	-
		GRANT		
	300.00	Scottish Chess Association		325.00
		ADJUDICATIONS		
32.00		Fees Received	81.00	
<u>30.00</u>	2.00	Fees Paid	<u>74.00</u>	7.00
		DONATIONS		82.50
152.00				
240.00		MISCELLANEOUS		-
<u>1430.67</u>				<u>851.22</u>

1992		GENERAL ACCOUNT EXPENDITURE	1993	
£	£		£	£
	12.00	SCA Affiliation		18.00
	25.00	Contribution to British Events		25.00
	63.00	ICCF		34.09
	172.61	Controllers' Expenses		128.74
	568.50	Secretarial Expenses		351.56
	44.59	Bank Charges		71.40
	3.09	Interest Charges		2.43
	50.00	Corporation Tax		50.00
	40.00	Auditor's Fee		50.00
	50.00	Adverts/Stationery		25.50
	60.00	Miscellaneous		88.01
	<u>1088.79</u>			<u>844.73</u>
	<u>341.88</u>	SURPLUS FOR THE YEAR		<u>6.49</u>
		LIFE MEMBERS ACCOUNT		
100.00		Membership Fees	100.00	
<u>194.34</u>	294.34	Interest Received	<u>260.87</u>	360.87
	<u>137.57</u>	less Transfer to General Fund		<u>159.90</u>
	<u>156.77</u>	SURPLUS FOR THE YEAR		<u>200.97</u>

1992		INTERNATIONAL ACCOUNT		1993	
£	£			£	£
		INCOME			
	46.00	INTERNATIONAL MATCH FEES		48.00	
	417.78	INTEREST RECEIVED		148.02	
		100 CLUB			
964.00		Subscriptions	968.00		
<u>478.30</u>	485.70	less Prizes	<u>479.00</u>	489.00	
		ICCF INDIVIDUAL ENTRIES			
-		Fees received by SCCA	174.00		
-	-	less Payments to ICCF	<u>108.64</u>	65.36	
	12.00	MISCELLANEOUS		8.50	
	<u>961.48</u>			<u>758.88</u>	
		EXPENDITURE			
1600.00		ACCRUED PRIZES		-	
	75.00	EXPENSES - LADIES TOURNAMENT		20.43	
	17.50	LOTTERY LICENCE		17.50	
815.58		ICCF CONGRESS		819.50	
183.89		SECRETARIAL EXPENSES		87.53	
-		ICCF TEAM ENTRY FEES		40.90	
-		ICCF GRADING FEES		63.27	
	50.00	MISCELLANEOUS		-	
	<u>2741.97</u>			<u>1049.13</u>	
<u>1780.49</u>		DEFICIT FOR THE YEAR		<u>290.25</u>	

1992		BALANCE SHEET AT 31st MARCH 1993			
£	£	ASSETS		£	1993
				£	£
		CLYDESDALE BANK PLC			
823.62		Current Account		87.14	
<u>3250.58</u>	4074.20	Deposit Account		<u>2873.49</u>	2960.63
		19.00	NATIONAL GIROBANK		19.00
		10.00	NATIONAL SAVINGS BANK		10.00
		6230.45	NATIONWIDE ANGLIA		6536.43
	<u>149.00</u>	DEBTORS			<u>60.00</u>
	10482.65				9586.06
		LESS LIABILITIES			
1384.85		GENERAL ACCOUNT (incl Accrued Prizes)		1010.10	
<u>1639.00</u>	<u>3023.85</u>	INTERNATIONAL A/C (—do—)		<u>1199.95</u>	<u>2210.05</u>
	<u>7458.80</u>				<u>7376.01</u>
		REPRESENTING			
		CAPITAL ACCOUNT	OPENING BALANCE	SURPLUS	CLOSING BALANCE
			£	£	£
		General Fund	5362.59	6.49	5369.08
		Life Members Fund	1338.10	200.97	1539.07
		International Fund	<u>758.11</u>	<u>(290.25)</u>	<u>467.86</u>
			<u>7458.80</u>	<u>(82.79)</u>	<u>7376.01</u>

 **Address Changes?**
Members are asked to advise changes of address promptly to their opponents, the tournament secretary, the Scottish CCA Secretary and the Editor of the SCCA Magazine.

Please send games (preferably annotated) to Games Editor:
George Pyrich,
53 Dunnikier Road,
Kirkcaldy,
Fife, KY1 2RL.

CHAMPIONSHIP 91-93 Controller: A Maxwell

No.		1	2	3	4	5	6	7	8	9	Pts
1	T J CRAIG	●	1	○		1	1		1/2	1	
2	A T HISLOP	○	●		1/2	○	1		1		
3	N DOWN	1		●		1	1	1		1	
4	J STEVENSON		1/2		●	1/2	1/2		1/2		
5	G D PYRICH	○	1	○	1/2	●	1/2	1	1/2	1/2	4
6	I S CAMPBELL	○	○	○	1/2	1/2	●	1	○	1/2	2 1/2
7	M T DYER			○		○	○	●	○		
8	T THOMSON	1/2	○		1/2	1/2	1	1	●	1	
9	C F BOYLE	○		○		1/2	1/2		○	●	

CANDIDATES 91-93 Controller: C R Beechan

No.		1	2	3	4	5	6	7	8	9	10	11	12	13	Pts
1	V HULME	●	○	1	1	1	1	1	1/2	1/2	1	1	1	○	9
2	V N COOK	1	●	1/2	1	1/2	1	○	1/2	○	1	○	1	○	6 1/2
3	J HERRIES	○	1/2	●			1	○	1/2	1	1	1	1	○	
4	N SVYSTUN	○	○		●		○	○	1/2	1				○	
5	D HARVY	○	1/2			●	1/2		○	1/2			○	○	
6	R TURNER	○	○	○	1	1/2	●	○	1/2	1		1	1	○	
7	J WATSON	○	1	1	1	1/2	1	●	1/2	1/2	1	1	1	1	9 1/2
8	C MCKAY	1/2	1/2	1/2	1/2	1	1/2	1/2	●	1/2	1	1/2	1	1	8
9	B GOODWIN	1/2	1	○	○	1/2	○	1/2	1/2	●	1	○	1/2	○	4 1/2
10	D NEIL	○	○	○				○	○	○	●		1/2		
11	M H DUNN	○	1	○			○	○	1/2	1		●	1	1	
12	D SALTER	○	○	○		1	○	○	1/2	1/2	1/2	○	○	1	
13	V RUTHERFORD	1	1	1	1	1	1	○	○	1		○	○	○	

"YOUR" ASSOCIATION

If you have any ideas or suggestions about improving or developing the Scottish CCA, we would be very pleased to hear from you. Just write to one of the Office Bearers (addresses on inside of front cover).

CHAMPIONSHIP 1993/94 Controller: A Maxwell

No		1	2	3	4	5	6	7	8	9	Pts
1	D M LIVIE	◆									
2	A T HISLOP		◆								
3	W HULME			◆							
4	J STEVENSON				◆						
5	G D PYRICH					◆					
6	G H BIRD						◆				
7	M T DYER							◆			
8	T THOMSON								◆		
9	C F BOYLE									◆	

CANDIDATES 1993/94 Controller: C.R. Beechan

SECTION A

No		1	2	3	4	5	6	7	Pts
1	R W M BAXTER	◆							
2	I A MARKS		◆						
3	A G STALKER			◆					
4	R TURNER				◆				
5	A FEINSTEIN					◆			
6	J E WEIR						◆		
7	D A HUGHSON							◆	

SECTION B

No		1	2	3	4	5	6	7	Pts
1	J WATSON	◆							
2	J HENDERSON		◆						
3	J COPLEY			◆					
4	M P ROBERTS				◆				
5	S A MURRAY					◆			
6	R COCHRANE						◆		
7	A N MacMILLEN							◆	

PREMIER TOURNAMENTS 1993

Controller A+B: D Salter; Controller C+D: J. Anderson

SECTION A

No		1	2	3	4	5	6	7	Pts
1	R F TURNER	◆							
2	I M JAMIESON		◆						
3	J R PARKER			◆				○	
4	D CRICHTON				◆				
5	A NISBET					◆			
6	B GOODWIN						◆		
7	P McCREA			1				◆	

SECTION B

No		1	2	3	4	5	6	7	Pts
1	M H DUNN	◆							
2	K SEYFRIED		◆						
3	I MACKINTOSH			◆	1				
4	J A CLAYTON				◆				
5	A R WILSON			○		◆			
6	A ARMSTRONG						◆		
7	S H HILTON							◆	

SECTION C

No		1	2	3	4	5	6	7	Pts
1	K GORDON	◆							
2	A WRIGHT		◆						
3	A SWANN			◆					
4	W HARPER				◆				
5	M A HAY					◆			
6	R DOWSON						◆		
7	A C NORRIS							◆	

SECTION D

No		1	2	3	4	5	6	7	Pts
1	N McEWAN	◆							
2	A MacQUEEN		◆						
3	S BRADY			◆					
4	C C McKAY				◆				
5	R BEACON					◆			
6	A D KILGARIFF						◆		
7	A C BROWN							◆	

MAJOR TOURNAMENTS 1993

Controller: G. McKnight

No	SECTION A	1	2	3	4	5	Pts
1	R BEACON	◆					
2	B MILLIGAN		◆				
3	W HARPER			◆			
4	J CASSIDY				◆		
5	R PELLIS					◆	

No	SECTION B	1	2	3	4	Pts
1	I SNEDDON	◆				
2	D CUMMING		◆			
3	A ARMSTRONG			◆		
4	A GEDDES				◆	

No	SECTION C	1	2	3	4	Pts
1	SG MACKENZIE	◆				
2	S M YOUNG		◆			
3	A MacQUEEN			◆		
4	F HALL				◆	

MINOR TOURNAMENTS 1993

Controller: A. Swann

No	SECTION A	1	2	3	4	5	Pts
1	S RILEY	◆				11	
2	G ANDERSON		◆			11	
3	W H CORMACK			◆		11	
4	T W POLLOCK				◆	11	
5	T F McAINSH	○○	○○	○○	○○	◆	○ w/b

No	SECTION B	1	2	3	4	5	Pts
1	K J GUTHRIE	◆			○		
2	C MACGREGOR		◆				
3	J LEWIS			◆	1		
4	A KNOX	1		○		◆	
5	F GOEDKOOP						

No	SECTION C	1	2	3	4	Pts
1	J W KILGOUR	◆				
2	J MURRAY		◆	11		
3	J COX		○○	◆		
4	A MACKIE				◆	

HANDICAP TOURNAMENT by Allan Hislop

The adjudication date for this season is 15th November and not 15th October as indicated in the pairings notice. Of course, if you wish, you may carry on with games past the adjudication date, as long as your opponent agrees. Please note also that games of less than 30 moves each in the Handicap will not be adjudicated. Such games will be carried over to next season.

Four more players joined the Handicap at various dates after the season had started and were fixed up with games. I have had two or three requests for more games and pairings will be made as soon as possible.

The following additional pairings have been made since the start of the season:

Name	H/C No.	Pairings/Opponents H/C No.
R Beacon	188	Awaiting 3
DR Cumming	197	Awaiting 3
B Milligan	206	v 243 and awaiting more
A Wilson	224	v 231
S Hilton	130	v 198, 236, 231
A Thomson	198	v 197, 236, 130
J Lange	221	v 231
M May	241	v 243
F Andres	231	v 221, 224, 130
W Cormack	243	v 241, 206, awaiting 2.

The following results have been received since those printed in the March issue, ie. from 1/1/93 to 19/5/93 :

F Andres 2	A Wilson 0	DR Cumming ½	½ B Milligan ½
TN Talbot 2	A Wilson 0	M Dunn ½	AC Brown ½
D McGarva 1	B Milligan 1	A Angus 1	A McMonigle 0
R Crosby 2	D McGarva 0	J Lange 1	A MacKay 0
DR Cumming 2	A Wilson 0	A Armstrong ½	S Hilton ½
TN Talbot 2	S Hilton 0	M Ford 1	A Armstrong 0
DR Cumming 1	J Jack 0	B Milligan 1	A Armstrong 1
S Young 2	DR Cumming 0	A Armstrong 1	R Beacon 0
A Angus 2	A Armstrong 0	A Armstrong 2	A Wilson 0
DR Cumming 2	A Armstrong 0	A Swann 1	J Jack 0
J McKenna 2	D Barlow 0	J Cassidy 1	B Milligan 0
DR Cumming 2	TN Talbot 0	R Beacon 1½	A Angus ½
M May 2	A Wilson 0	M Ford 1	B Milligan 0
K Guthrie 2	F Andres 0		

QUARTETS 1993 Controller: I W S Mitchell

No	Postal Knight	1	2	3	4	Pts
1	A WRIGHT	♦			11	
2	E A BAILEY		♦		11	
3	JG BLENCOWE			♦	11	
4	S H HILTON	oo	oo	oo	♦	

No	Postal Shield	1	2	3	4	Pts
1	I SNEDDON	♦				
2	T McMORRAN		♦			
3	R BEACON			♦		
4	E A BAILEY				♦	

No	Postal Rook	1	2	3	4	Pts
1	A G E BIRD	♦				
2	R F TURNER		♦		1	
3	S M YOUNG			♦		
4	A ARMSTRONG		o		♦	

No	Q170	1	2	3	4	Pts
1	D R R ELLIS	♦				
2	J LEWIS		♦	11		
3	J W KILGOUR		oo	♦		
4	AD KILGARIFF				♦	

No	Q171	1	2	3	4	Pts
1	A C NORRIS	♦	11			
2	K J GROSE	oo	♦	oo	oo	o
3	DG McROBERTS		11	♦		
4	K GORDON		11		♦	

No	Q172	1	2	3	4	Pts
1	J ANDERSON	♦				
2	M A MAY		♦	1½		
3	J McMENEMY	o	♦			
4	S R CAPSEY	½		♦		

No	Q173	1	2	3	4	Pts
1	A ARMSTRONG	♦			oo	
2	T TAYLOR		♦			
3	G PLANT			♦		
4	J CASSIDY	11			♦	

No	Q174	1	2	3	4	Pts
1	R CROSSBIE	♦	o			
2	J McCAHEY	1	♦			
3	A MacQUEEN			♦		
4	D R CUMMING				♦	

QUARTETS/HANDICAP
 Entries can be made at any time to Alan Hind. New pairings will be arranged when there are sufficient new players to do so.

OPENINGS TOURNAMENTS 1993 Controller: T Thomson

No	OT1	1	2	3	4	Pts
1	G WOOD	♦				
2	J BLENCOWE		♦			
3	S R CAPSEY				♦	
4	K J CROSS					

No	OT2	1	2	3	4	Pts
1	J CASSIDY	♦				
2	A G E BIRD		♦			
3	I M JAMIESON			♦		
4	S HILTON				♦	

Opening moves are 1 b3 e5 2 ♠b2 ♠c6 3 e3

SCOTTISH CCA LEAGUE 1993

DIVISION 1 (Controller - A. Nisbet)

A DUNDEE & VICTORIA "A"

1	J King	v E1
2	PW Walsh	v D2
3	J Anderson	v C3
4	F Stevenson	v B4
5	R Burnett	v F5

B BLACK KNIGHT

1	GR Sprott	v D1
2	IF Reeman	v C2
3	DR Reid	v F3
4	EA Spencer	v A4
5	G Wood	v E5

C KIRKCALDY KINGS

1	GD Pyrich	v F1
2	T Thomson	v B2
3	A Burnett	v A3
4	I Marshall	v E4
5	W Burnett	v D5

D KNIGHTMARE

1	CR Beecham	v B1
2	DM Livie	v A2
3	A Maxwell	v E3
4	AD Kilgariff	v F4
5	A Geddes	v C5

E WANDERING DRAGONS "A"

1	M Orr	v A1
2	A Ferguson	v F2
3	D Crichton	v D3
4	J Konarski	v C4
5	D Laing	v B5

F PERTH CORRESPONDENTS

1	AP Borwell	v C1
2	W Rutherford	v E2
3	D Harvey	v B3
4	MP Roberts	v D4
5	IA Mackintosh	v A5

DIVISION 2 (Controller - M.C. McQueen)

A HAWICK SUPERKINGS

1	DA Kilgour	v E1
2	A Armstrong	v D2
3	S Hilton	v C3
4	J Taylor	v B4
5	B Milligan	v F5

B KNIGHT SAC

1	T Tait	v D1
2	R Holland	v C2
3	I McKechnie	v F3
4	P Tait	v A4
5	A Bennigan	v E5

C WANDERING DRAGONS "B"

1	C Donkin	v F1
2	DH Nimmo	v B2
3	M Ford	v A3
4	C Dowle	v E4
5	C Stewart	v D5

D ALMOST KIRKINTILLOCH

1	R Turner	v B1
2	A Swann	v A2
3	DR Cumming	v E3
4	W Harper	v F4
5	P McConnell	v C5

DIVISION 2 (contd)

E DUNDEE & VICTORIA "B"

1	J Robertson	v A1
2	B Malloch	v F2
3	N Ferrie	v D3
4	J Robertson	v C4
5	B Wallace	v B5

F BRUTAL REALISM

1	JS Murray	v C1
2	P Coffield	v E2
3	A Thomson	v B3
4	B Keenan	v D4
5	SR Capsey	v A5

DIVISION 3 (Controller - I. Sneddon)

A WANDERING DRAGONS "C"

1	G Sanderson	v E1
2	A Donkin	v D2
3	M Young	v C3
4	P Hanson	v B4
5	S Findlay	v F5

B EDINBURGH WEST

1	I Jamieson	v D1
2	W Grant	v C2
3	A Seywright	v F3
4	B McEwan	v A4
5	SM Young	v E5

C POLYTECHNIC

1	MT Dyer	v F1
2	J Lindsay	v B2
3	J Watson	v A3
4	N Paterson	v E4
5	J McGroarty	v D5

D LANGTON KNIGHTS

1	B Sudjic	v B1
2	A Millar	v A2
3	G Robertson	v E3
4	A Mackie	v F4
5	B Morley	v C5

E GIFFNOCK & CLARKSTON

1	PM Giulian	v A1
2	IS Campbell	v F2
3	CF Boyle	v D3
4	W Leithead	v C4
5	A MacQueen	v B5

F BOURNE END BUCKS

1	J Brookes	v C1
2	J Watson	v E2
3	R de Coverly	v B3
4	E Tweeddale	v D4
5	M Vann	v A5

Minor Tournament Controller, Andy Swann, writes:

"Unfortunately, Tom McAinsh was taken ill and forced to withdraw from the Minor Tournament. However, we are pleased to hear he is making a good progress and that he hopes to be able to participate next season."

[Editor: We send our best wishes to Tom for a complete recovery and also to K.J. Grose, who had to withdraw from the Quartets because of illness.]

SCOTTISH OPEN TOURNAMENTS by Douglas Livie

The Final stage has now been reached in both the 2nd and 3rd Tournaments and some competitive games are anticipated before the destiny of the tournaments and prizemoney is decided. The pairings for the respective Finals are:

2nd Scottish Open FINAL

No		1	2	3	4	5	Pts
1	A MUKHERJEE	◆					
2	C J LENNOX		◆				
3	J McLEAN			◆			
4	T THOMSON				◆		
5	C R BEECHAM					◆	

3rd Scottish Open FINAL

No		1	2	3	4	5	6	7	8	Pts
1	G E WALLWORK	◆								
2	I A MACKINTOSH		◆							
3	A N MORRIS			◆						
4	G LYBURN				◆					
5	A D ARCHIBALD					◆				
6	J M HERRIES						◆			
7	W D TAYLOR							◆		
8	R F TURNER								◆	

(A new Scottish Open Tournament is planned to begin in late Spring 1994. Full details will be provided in the first edition of the Magazine next year - Editor)

2nd Scottish Open Semifinal Section C

Results: Mukherjee ½ Wallwork
Mukherjee 0 Beecham
Beecham 1 Wallwork
Beecham ½ McMillen

Leading Scores

A Mukherjee & C R Beecham both 2½ pts
J Copley & G E Wallwork both 2 pts

3rd Scottish Open Tourney Section 2

Results: Archibald ½ Kilgariff
Archibald ½ Herries
Archibald ½ Lyburn

Leading Scores

R F Turner 6 pts
AD Archibald, JM Herries & G Lyburn all 5 pt

SCOTTISH CCA MAGAZINE INVITATION TOURNEY

(by PhilipGiulian)

With our event in Sections A and B now virtually finished, I feel it is time to reflect on the Scottish successes. Scotland has gained in terms of international esteem but also in the playing sense with three new International Masters. To achieve the title in this event, players in Section A had to score 7/13, a rating performance in excess of 2450. At the start of the tournament, none of the Scots had a grading near this level. David Kilgour and I were about 50 points short but Alan Borwell had to find a massive 150 points.

Reaching the International Master norm never seemed in doubt for David Kilgour. He regarded the tournament as fairly uneventful. He won his good positions, drew his level ones, and lost his poor ones! Despite his excellent score of 8/13 and fourth position, David was critical afterwards of his approach. He felt he paid too much attention to the title norm and this led to his playing too solidly and not aggressively enough with black. David feels that this approach was wrong and advises others not to follow his example!

In the following game, David quickly disposes of the strong English International Master Cliff Chandler.

White: D.A. Kilgour 2410

Black: C.R. Chandler 2445

Berlin Defence C67

1	e4	e5
2	♘f3	♙c6
3	♙b5	♘f6
4	0-0	♙xe4
5	d4	♙e7
6	♗c2	♙d6
7	♙xc6	bxc6
8	dxe5	♙b7

Often played here is 8 ... ♙f5 9 ♗e4 g6 10 b3 0-0 11 ♙b2 ♙b7 12 ♖e1 d5 13 exd6 cxd6 14 ♙bd2 with a slight edge for White.

9	♙c3	♙c5
10	♙e3	0-0
11	♖ad1	♙e6
12	♖fe1	f6

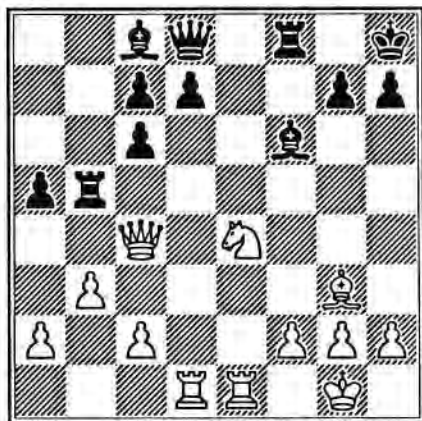
More usual here is d5 or ♖b8 after which White has a slight advantage in space.

13	♙d4	♙xd4
14	♙xd4	fxe5
15	♙xe5	♙f6
16	♗c4+	♙h8
17	♙g3	

All theory so far!

17 ♖b8
 18 b3 a5
 19 ♗e4 ♖b5??

Better is ♖b4 but White is still better. Presumably Black missed White's reply.



20 ♗xc7!! ♖xc7
 21 ♗d6 ♗e5
 22 ♗f7+ ♖xf7

Also losing is 22 ... ♗g8 23 ♗h6+ ♗h8 24 ♖g8+ ♖xg8 25 ♗f7 mate.

23 ♖xf7 h6
 24 f4 ♗f6
 25 ♖g6 Resigns

There is no defence to ♖e8 mating.

△ △ △ △ △

Unlike David, my title was in the balance almost until the end. Initially my games followed a similar pattern to David's - I won my good positions, drew my level ones and lost my poor ones.

The following game may not have been the most exciting game I have ever played but it was crucial. Ragnar Wikman had remorselessly ground me down in the John Kellner Invitation, thereby depriving me of the title in that tournament. Here was my chance of revenge!

White: P.M. Giulian 2395
 Black: R. Wikman 2385

Nimzo Indian E20

1 d4 ♗f6
 2 c4 e6
 3 ♗c3 ♗b4
 4 f3 c5
 5 d5 ♗h5
 6 g3 ♗xc3+?!

An unnecessary move. Better is 6 ... f5 7 e4 0-0 8 e5 f4 9 ♗e2 d6 with an unclear position.

7 bxc3 f5
 8 e4 f4

Better than 8 ... ♖f6 9 f4 ♗xg3 10 hxg3 ♖xc3+ 11 ♗d2 ♖xg3+ 12 ♗e2 fxe4 13 ♖b3 and White stood much better in Nogueiras - Kindermann (Dubai 1986).

9 dxe6 ♖f6

Csom was destroyed by Ivancuk (Erevan 1989) when he tried 9 ... fxg3 10 ♖d5 g2 11 ♖xh5+ g6 12 ♖e5 ♖h4+ 13 ♗e2 gxh1=♖ 14 ♖xh8+ ♗e7 15 ♖g7+ ♗e6 16 ♗h3+.

10 ♗e2 fxg3

11 ♗g2 dxe6!

A new move and an interesting try. 11 ... ♖xe6 12 hxg3 ♗f6 13 ♗f4 ♖xc4 14 e5 ♖xc3+ 15 ♗f2 ♖xa1 16 exf6 was much better for White in Nogueiras-Rodriguez (San Juan 1985).

Also clearly better for White is 11 ... gxe2 12 ♖xh2 g6 13 exd7+.

12 ♗e3!?

Not 12 hxg3? ♗xg3 13 ♗xg3 ♖xc3+ 14 ♗d2 ♖xc4 with an unclear position which possibly favours Black.

12 ♖e7?

Much better is 12 ... gxe2 13 ♖xh2 g6 14 ♗xc5 e5 with an unclear position.

13 hxg3 ♗f6
 14 e5 ♗fd7
 15 f4 g6?!

Better is 15 ... ♗c6 and then 16 ♗e4 h6 17 ♗g6+ is much better for White.

16 ♖d3 0-0
 17 g4

White's plan is simple: ♗g3, ♗e4, 0-0-0 with an overwhelming attack.

17 ♗c6
 18 ♗g3 ♗d8
 19 ♗e4 ♗f7
 20 ♗f2

Threatening ♗h4 and/or ♖h3 winning.

20 ♖b8
 20 0-0-0

Black resigned because of the overwhelming threats. (1) 22 ♖xd7 ♗xd7 23 ♖xd7 ♖xd7 24 ♗f6+ followed by 25 ♖xh7 mate; (2) if 21 ... ♗d8 22 ♗h4 ♖f7 23 ♗f6 is crushing.

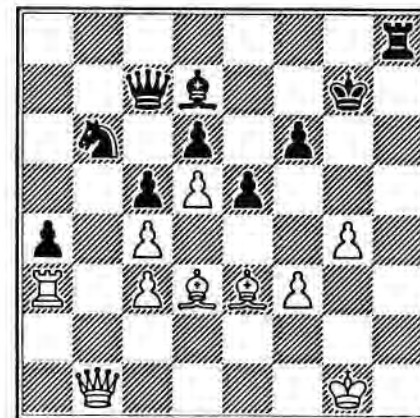
△ △ △ △ △

When I lost to Ferenc Fabri, I needed one out of my two remaining games, both of which were bad for me. The turning point was definitely my game with Rennemo. I had been outplayed in the opening but had struggled on to move 46.

White: P.M. Giulian 2395
 Black O. Rennemo 2425

Position after White's 46th move:

Black: O. Rennemo



White: P.M. Giulian

After torturing me on both sides of the board, Black has a clear advantage and is effectively a pawn up. Black decided to open up the way to my King but his pieces are not well enough placed for such an attack. Remarkably, I soon have the initiative on both sides of the board!

46 e4??
47 fxe4

Clearly not 47 ♖xe4?? ♜xc4 winning the exchange.

47 ♜xg4
48 ♖a2

Threatening ♖g2 winning and also has the idea of ♖b2.

48 ♖f7
49 ♜f4!

This is an important move. It places pressure of the pawn on d6 and also gives another defence to the weak squares of g3 and h2.

49 ♖g8
50 ♖f2 ♖e7
51 ♖b2 ♖b8
52 ♖g1 ♖g8
53 ♜e2 a3

Black's position is already desperate. If 53 ... ♜e6 54 ♖h2 and now (i) 54 ... ♜d7 55 ♖h7+ ♖f8 56 ♜h6 winning, or (ii) 54 ... ♜f7 55 ♜xd6+! ♖xd6 56 ♖xd6+ ♖xd6 57 ♖xb6+ winning.

54 ♖a2 ♜e6

55 ♖h2 ♜f7

Again 53 ... ♜d7?? 56 ♖h7+ ♖f8 57 ♜h6+ wins.

56 ♖xa3 ♖a8
57 ♖xa8 ♜xa8
58 ♜h5 ♜xh5
59 ♖xh5 ♖d8
60 ♖g4

Also winning is 60 ♖h7+ ♖e8 61 ♖g8+ ♖d7 62 ♖xd8+ ♖xd8 63 ♜xd6 ♜b6 64 ♜xc5.

Black resigned. There is no defence. 60 ... ♖d7 61 ♖g7+ ♖d8 62 ♖h8+ ♖e8 63 ♖xf6+ wins easily.

In the end I was able to draw my remaining game with Rick Callaghan, giving me a half-point above the norm and making my title appear more secure than it had actually been.

△ △ △ △ △

Alan Borwell had a much more eventful path to the title. He began with much the same philosophy as David Kilgour. Alan targeted certain opponents where he felt wins were needed and others where he felt he should play more cautiously, especially with black.

FRIENDLY INTERNATIONALS

Members wishing to play in further friendly internationals should advise our Assistant International Secretary, Colin Macgregor.

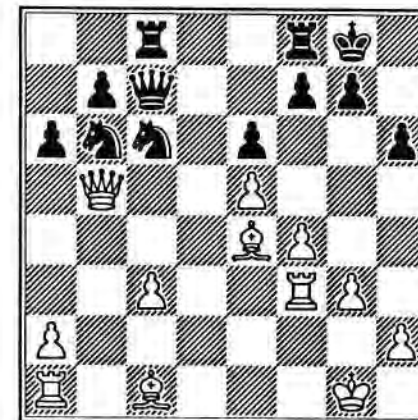
These plans counted for little as Alan made a disappointing start. A favourable position had been reached when his Dutch opponent had to withdraw and then disaster struck.

First, Prystenski produced a neat knight sacrifice which completely refuted Alan's rather risky Queen's Gambit Accepted. Then David Kilgour took full advantage of Alan's premature thrust in a French Defence after he had achieved virtual equality. Alan followed this with five draws, three with the white pieces where he was unable to convert several good positions into full points.

However, he still had a number of good positions, being a pawn up against the eventual winner Fabri, the exchange up against Wikman, winning versus Rennemo, and with good chances against Chandler. In his remaining two games, against De Ruiter and Callaghan, he was a pawn down. Alan admits that the IM title was very much in the back of his mind at this stage of the Tournament.

This is where the story really begins. Against Cliff Chandler, the position after 20 moves had not looked too promising but, after the following neat sequence, Alan was gaining the initiative. Then, at the critical point, he had one of those moments of "chess blindness", completely missing an obvious resource.

Black: A.P. Borwell



White: C.R. Chandler

There followed:

21 ♖e2 ♜e7
22 ♖b1 ♜cd5
23 ♜a3 ♜xc3!
24 ♖xc3 ♖xc3
25 ♜xf8 ♖d4+
26 ♖f1 ♜d5?!
27 ♜a3 ♜e3+
28 ♖g1 ♖xe4

Completely missing White's 29th move.

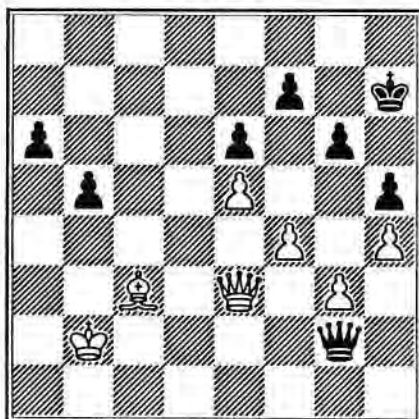
29 ♖c1!

Wins a piece for two pawns.

29 ♖c2
30 ♖xc2 ♖xc2
31 ♖xc3 ♖xa2

By move 50, the following position had been reached, with White to play :

Black: A.P. Borwell



White: C.R. Chandler

White is still a piece for two pawns up, but cannot avoid perpetual check without risking too much. The game concluded:

51	♔a3	♚c2
52	♚d4	♚b1
53	♘d2	♚g7
54	f5	gx f5
55	♚d8	♚a1+
56	♚b4	♚a4+
57	♚c5	♚c4+

Agreed drawn because if 58 ♔b6 b4 59 ♚f6+ ♚g8 60 ♘h6 ♚b5+ gives perpetual check.

By the time this game had finished, Alan had beaten both Rennemo and Wikman. However, the tournament favourite (and eventual winner) Ferenc Fabri had produced a clever piece sacrifice to secure a draw. This left

Alan needing 1½ out of 2 against De Ruiter and Callaghan, where he was approaching endgames a clear pawn down - a seemingly impossible task.

The story of these games is worthy of an article in itself and will be published in the next issue of our Magazine.

A number of games from this event have been published in previous issues of our Scottish Correspondence Chess Magazine. These are, with magazine number and page number:

- Giulian-Kristinsson 37 (p. 57),
- Hartung-Nielsen - Borwell 38 (p. 32)
- Borwell-Rennemo 38 (p. 35)
- Borwell-Fabri 39 (p. 21)
- Borwell-Giulian 40 (p. 38)
- Borwell-Wikman 40 (p. 38)

Section A

Current positions with only one game to be completed:

- | | |
|----------------------------|-------|
| IM F Fabri (HUN) | 11½ |
| IM M Bauer (GER) | 9 |
| IM J Hartung Nielsen (DEN) | 8½ |
| IM DA Kilgour (SCO) | 8 |
| IM PM Giulian (SCO) | 7½ |
| (IM) AP Borwell (SCO) | 7 |
| IM CR Chandler (ENG) | 6½(1) |
| A Prystewski (CAN) | 6½ |
| T de Ruiter (NLD) | 5½ |
| J Kristinsson (ISD) | 5(1) |
| IM R Callaghan (USA) | 5 |
| IM R Wikman (FIN) | 3½ |
| DM Jenkins (SCO) | 3½ |
| O Rennemo (NOR) | 3 |

G den Broeder (NLD) withdrew and all his games were annulled.

SCOTTISH CCA MAGAZINE INVITATION TOURNAMENT

SECTION A IM = 7pts

1 D JENKINS (SCO)	2385
2 T de RUITER (NLD)	2505
3 J HARTUNG-NIELSEN (DEN)	2495
4 O RENNEMO (NOR)	2425
5 A PRYSTENSKI (CAN)	2405
6 F FABRI IM (HUN)	2515
7 R CALLAGHAN Jnr (USA)	2500
8 J KRISTINSSON (ICR)	2430
9 C CHANDLER (ENG)	2445
10 P GIULIAN (SCO)	2395
11 D KILGOUR (SCO)	2410
12 M BAUER (BRD)	2415
13 G den BROEDER (NLD)	2440
14 A BORWELL (SCO)	2295
15 R WIKMAN IM (FIN)	2385

	1	2	3	4	5	6	7	8	9	10	11	12	13	14	15	
1	0	1/2	0	0	1	0	0	1	0	1/2	0	0	-	1/2	0	3½
2	1/2	0	1/2	1	0	0	1	0	0	1/2	1	1/2	-	0	1/2	5½
3	1	1/2	0	1	0	1/2	1	1/2	1	1/2	1/2	1/2	-	1/2	1	IM 8½
4	1	0	0	1	0	0	1	0	0	0	1/2	1/2	-	0	0	3
5	0	1	1	0	0	0	1	1	1/2	0	0	0	-	1	1	6½
6	1	1	1/2	1	1	0	1	1	1/2	1	1	1	-	1/2	1	11½
7	1	0	0	1	0	0	0	1/2	1/2	1/2	1/2	0	-	1/2	1/2	5
8	0	1	1/2	1	0	0	1/2	0	0	0	1	-	1/2	1/2		
9	1	1	0	1	1/2	1/2	1/2	0	0	1	0	-	1/2	1/2		
10	1/2	1/2	1/2	1	1	0	1/2	1	1/2	1/2	1/2	0	-	1/2	1	IM 7½
11	1	0	1/2	1/2	1	0	1/2	1	1	1/2	0	-	1	1		IM 8
12	1	1/2	1/2	1/2	1	0	1	0	1	1	1	-	-	1/2	1	IM 9
13	-	-	-	-	-	-	-	-	-	-	-	-	-	-	-	w/d
14	1/2	1	1/2	1	0	1/2	1/2	1/2	1/2	0	1/2	-	-	-	1	IM 7
15	1	1/2	0	1	0	0	1/2	1/2	0	0	0	-	0	-	0	3½

SECTION B IM = 9½pts

1 G PYRICH (SCO)	2225
2 G RICKERS (BRD)	2375
3 Dr J VANDORFFY (HUN)	2415
4 T GREINER (USA)	2375
5 Dr V KARLSSON (ICR)	2375
6 A ROS (BRD)	2395
7 A NOKSO KOIVISTO (FIN)	2385
8 B MARTIN (SCO)	2320
9 T CRAIG (SCO)	2290
10 L PATTERSON (CAN)	2290
11 I CAMPBELL (SCO)	2310
12 S TRICHNEISTER (OST)	2395
13 R BERCHAN (SCO)	2280
14 K KOISTINEN (FIN)	2360
15 P VAAG (AUS)	(2200)

	1	2	3	4	5	6	7	8	9	10	11	12	13	14	15	
1	0	1/2	1/2	1/2	1/2	1/2	1/2	1	1	1	1/2	1/2	1	0		8½
2	1/2	0	1/2	1	1/2	1	0	1/2	1	1/2	1	1/2	1/2	1/2	1	9
3	1/2	1/2	0	1/2	0	0	1/2	1/2	1	1/2	0	1	1/2	1/2		
4	1/2	0	1/2	0	1/2	1/2	1/2	1/2	1/2	1/2	1	0	1/2	1	1	7½
5	1/2	1/2	1/2	1/2	0	1	1/2	1	1/2	1	1/2	0	1/2	0	1/2	
6	1/2	0	1	1/2	1	0	1/2	1/2	1	1/2	1	1/2	1	1	1	IM 10
7	1/2	1	1/2	1/2	1/2	1/2	1	1	1/2	1/2	0	1/2	1	1/2		7
8	1/2	1/2	1/2	1/2	0	1/2	1/2	1/2	1/2	1	0	1/2	1	1/2		
9	0	0	1/2	1/2	1/2	0	0	1/2	0	1	0	1/2	1/2	1/2	1	5½
10	0	1/2	0	1/2	0	1/2	0	1/2	0	1/2	0	1/2	1	1		5
11	0	0	1/2	0	1/2	0	1/2	0	1	1/2	1/2	1/2	0	1/2		4½
12	1/2	1/2	1	1	1	1/2	1/2	1	1/2	1	1/2	1/2	1/2	1		IM 10
13	1/2	1/2	0	1/2	1/2	0	1	1/2	1/2	1/2	1/2	1/2	1/2	1/2		6½
14	0	1/2	1/2	0	1	0	1/2	0	1/2	0	1	1/2	1/2	1/2		5½
15	1	0	1/2	0	1/2	0	1/2	0	0	1/2	0	1/2	1/2	1/2		

LADIES SECTION IM = 8 pts

1 M LJUBIČIĆ (YUG)	(2175)
2 R GIULIAN (SCO)	(2050)
3 S DJURIC (YUG)	2175
4 E CSOM-BEMETHWE (HUN)	2115
5 B HARTFORD (SCO)	1900
6 E CYNOLTER BOGARNE (HUN)	2005
7 D COOPER (VAL)	2250
8 M HORVATH (HUN)	(1900)
9 A SCHOL-GRIN (NLD)	1910
10 C HENRI (AUS)	(1900)
11 M D KRASIKOVA (SU)	2100
12 E MOZNA-HOJDAROVA (CZE)	2340
13 R I NEVEDNITSCHAJA (SU)	2320
14 DR T HARGITAY (HUN)	1900
15 DR C ROSENFELD (USA)	2200

	1	2	3	4	5	6	7	8	9	10	11	12	13	14	15	
1	0	0	1	1/2	0	0	1	0	0	0	0	0	0	0	0	
2	0	0	0	0	0	0	1	0	0	0	0	0	0	0	0	
3	-	-	-	-	-	-	-	-	-	-	-	-	-	-	-	w/d
4	0	1	-	0	0	0	1	0	0	0	0	0	0	0	0	
5	1/2	0	0	0	0	1/2	0	0	1	0	0	0	0	0	0	
6	0	0	0	1	0	0	1	0	0	0	0	0	0	0	0	1
7	0	0	0	0	1/2	0	1/2	0	0	0	0	0	0	0	0	
8	0	0	0	0	0	0	1/2	0	0	0	0	0	0	0	0	
9	0	0	0	0	0	0	0	0	0	0	0	0	0	0	0	
10	0	0	0	0	0	0	0	0	0	0	0	0	0	0	0	
11	0	0	0	0	0	0	0	0	0	0	0	0	0	0	0	
12	0	0	0	0	0	0	0	0	0	0	0	0	0	0	0	
13	0	0	0	0	0	0	0	0	0	0	0	0	0	0	0	
14	1	0	0	0	0	0	0	0	0	0	0	0	0	0	0	
15	0	0	0	0	0	0	0	0	0	0	0	0	0	0	0	

NEW BOOKS

by Alan Borwell

New Ideas in the Pirc Defence

by John Nunn

Figurine, paperback £10.99

Another valuable addition to this interesting series by John Nunn and other leading theoreticians. The Pirc is a sharp defence which is based on the rapid undermining of White's pawn centre.

The 48 main games are very well analysed, with many cross references to recently played variations from other games. The 144 pages are packed with useful ideas, befitting the title of this series.

Winning with the Skandinavian

by Shaun Taulbut and Ron Harman

Figurine, paperback £12.99

This defence, known also as the Centre Counter, has increased in popularity in recent times. The two alternatives of 2 ... ♖xd5 or 2 ... ♔f6 are analysed in depth with all main variations covered.

The two authors are experts in the Defence and there are numerous references from the games of GMs Bent Larsen, Ian Rogers, Jon Speelman, Michael Adams and Julian Hodgson.



Batsford

4 Fitzhardinge Street
London, W1H 0AH.
Tel. 071 486 8484

The King's Indian for the Attacking Player

by Graham Burgess

Figurine, paperback £12.99

This 178-page book endeavours to provide a complete repertoire in every popular variation. There are over 40 complete games to highlight key points and concepts, many from recent tournaments. Each game is analysed extensively and well presented using both games examples and theoretical comment.

A useful book for both King's Indian addicts and also for those 1 d4 players who have to try to refute it!

Your First Chess Games

by A.J. Gillam

Figurine, paperback £7.99

This is a basic book explaining the principles of opening play for those who have learned the basic moves.

Ideal for youngsters and other novices who are beginning to show an interest in chess, and reasonably priced. It can be worthwhile purchasing well researched books written by lesser known authors, rather than simply paying more because a well-known name appears on the cover!

The Closed Spanish

by Anatoly Bikhovsky

Figurine, paperback £9.99

This book specialises on the Zaitsev (9 ... ♗b7) and Karpov (9 ... ♗d7) variations, which have been used frequently in recent World Championship matches.

There are 141 pages of detailed analysis of each main line, with a good index of variations.

For CC players of the Ruy Lopez Closed Variations, this book is also an important volume as there is an increasing possibility of having to contend with this Defence.

Training for the Tournament Player

by Mark Dvoretzky & Artur Yusupov

Figurine, paperback £14.99

In the opinion of GM John Nunn, this is the best book he has seen recently. It seeks to demonstrate how to prepare for games and includes a self-diagnosis of one's strengths/weaknesses, analysis disciplines and how to plan and assess games.

The 190 pages, organised into 8 main "themes" are full of sound advice and interesting game examples. Much of its content is equally relevant to OTB and CC players.

Winning with the Scotch

by Gary Lane,

Figurine, paperback £12.99

It will come as no surprise to our readers that such a book should be written, even though the author is an English IM!

The Scotch Opening has been used successfully since the origins of chess, including some very famous Immortal Games. However, with its adoption by Garry Kasparov in the 1990 World Championship match, its popularity is now widespread, with many more tactical possibilities having been discovered.

Gary Lane is an excellent writer, with clear presentation and a refreshing approach, compared with some of the more prolific producers of generalist books.

How to Play the Opening in Chess

by Raymond Keene & David Levy

Figurine, paperback £9.99

A 162-page book which is rather generalised in the range of openings selected. Probably will succeed on the shelves of public bookshops but not really one for more advanced students of the game.



Batsford

4 Fitzhardinge Street,
London W1H 0AH
Tel. 071 486 8484

CADOGAN CHESS BOOKS

Accelerated Dragons
by Silman & Donaldson
Figurine, softback £12.99

A very interesting 226-page well organised and indexed book based on the main line 1 e4 c5 2 ♖f6 ♗c6 3 d4 cxd4 4 ♖xd4 g6 but with smaller sections on 2 ... g6 and 2 ... ♗c6, 4 ... ♗f6 5 ♗c3 g6?!

Well researched by its American authors over 12 years (!), this could be useful to CC players who are looking to try a different variation of the Sicilian.

The presentation, index and cover are excellent and it represents good value for money.

Chess Endings: Essential Knowledge
by Yuri Averbach
Figurine, softback £7.99

How do you impart to the average player a basic understanding of endgames in a readable book? Well, this is a good attempt to explain, in just over 100 pages, the principles of elementary endings, through the exploitation of material and positional advantage to more complex examples from master play.

The Nimzo Indian Defence
by Svetozar Gligoric
Figurine, softback £14.99

Over recent years I have frequently found useful ideas from this author's 1985 book on the Nimzo. This updated edition, with its 136 games, includes longstanding references but also some very recent innovations.

The 337 pages are well organised, featuring sections on each of the mainstream variations. They include new ones attributed to Kasparov and Karpov, as well as the long-established Sämisch and Capablanca lines.

Excellent value and will become "the standard", replacing the earlier version.

Chess Travellers Quiz Book
by Julian Hodgson
Figurine, softback £7.99

There are 200 test yourself tactical positions in increasing order of difficulty. Attractive presentation with solutions given overleaf for each set of 4 positions. Nice travelling companion to while away the hours!

CHESS SOFTWARE

For IBM, ATARI, AMIGA, MAC, PCW



CHESSBASE 4.0 (IBM/ATARI)

Basic Package—more than 8,000 games £199.00 **Mega Package**—more than 39,000 games £399.00
Profi Package—more than 22,000 games £279.00 **Update 3.0 to 4.0** £44.95

ChessBase Starter (game storage/replay) £24.95 (Demo Disk £4)
CB Magazine – 6000 games p.a., 3000 annotated. £79.95
Fide Chess – Over 15000 games per year on 20 disks! £149.95

LATEST DISKS:

Alekhine, Dragon 1&2, Semi-Slav 1&2, QID, QGA, CCYB7, Informator 55, Historical 21-24.

CHESSBASE INFO: Be the first to know when the latest ChessBase products and data disks are released. Send us your address and we will send you regular information packs on all your favourite ChessBase products.

Send an unformatted floppy to get your free disk of the European Team Championships in ChessBase format.

FRITZ 2 (IBM) Stop Press!! Fritz (9) – Kasparov (28) in Blitz Match

Now much stronger, est. 2200 Elo, 200 BCF. Up to 32 MB hash tables, up to 28-ply search. Sophisticated openings manager of unlimited size. Includes historic and tactics databases. Postgame analysis – let Fritz analyse and annotate your games overnight. Biographical books make Fritz play like Alekhine or Capablanca, or special openings books to give it a deadly repertoire. New patzer levels for when you want to win! Fritz II reads all ChessBase opening disks and data. Fritz II £76.95, upgrade £44.95 (return manual).

NEW!! One Million Moves for Fritz2

The powerbook series enhance Fritz' playing strength by making it an expert in different opening systems.
10 Power Books: £19.95 includes Sicilian c3, Scotch, Tarrasch, Scandinavian, Evan's Gambit
50 Power Books 1: £39.95 A00 to C59: English, French, Open Games, Sicilian, King's Gambit, etc.
50 Power Books 2: £39.95 C60 to E99: Ruy Lopez, King's Indian, Grünfeld, Queen's Gambit etc.

NICBASE 3.0 £117.50

BOOKUP 7.0 £84.95

CHESS READER £44.95

IBM CHESS SOFTWARE

CHESS GENIUS By Mephisto programmer Richard Lang — Raw Power!! Est. 214 (2316 Elo) £89
MChess PROFESSIONAL £99 (upgrade £50.00). Even stronger, optimised for 386 machines. Uses extended memory for hash tables ensuring faster and more extensive look ahead. Programmable opening book with 200,000 positions. Estimated 208 BCF on a 486/33 MHz machine.
MChess £77. Second in 1991 World Microcomputer Championship. 205 BCF (2240 Elo) on a 486/33 MHz.
FRITZ I £44.95. The ChessBase Compatible playing program that reads all ChessBase data. 175-190 BCF.
CHESS MACHINE The World Computer Champion, est 215 BCF, 2320 Elo. Internal card £299!!; external card £499. ChessMachine 'Madrid' (Winner of the 1992 World Computer Chess Championship) Est. 225+ BCF!! 2400+ Elo!! £995. On-screen analysis; print games and diagrams; includes beginners tutorials; a huge user-editable opening library. "The Chess Machine is easy to use and provides a strong opponent at an affordable price" – GM John Nunn, BCM.
CHESS TUTORIAL Beginners £29.95, Intermediate £29.95. Interactive chess courses. Highly recommended.
TILBURG FONTS (TrueType) Figurines and diagrams. £31.95. **DIAGRAM PRINT** £34.95.

MACINTOSH CHESS SOFTWARE

NEW CHESS MASTER 3000 £34.95. (See IBM). **OMAR SHARIF PLAYS BRIDGE** £39.99.
BOOKUP 2.0. At last a positional Chess Database for the MAC! £84.95. Loads of data available.
CHESSREADER ASCII based database – reads all ASCII data! Ideal for publishing. £44.95
TILBURG FONTS (TrueType) Figurines and diagrams. £31.95. Become a chess publisher instantly!

PCW PCW Chess Database £59.95 + £2.50 p&p; PCW Diagram print £14.95
AMIGA/ATARI Chess Champion 2175, est. 160 BCF £24.95; Omar Sharif Bridge £29.99

*CB Software, IM Malcolm Pein, 37 Marsh Lane, London NW7 4QJ.
Tel: 081 959 0670. Fax 081 906 8771
Or call at Chess & Bridge Ltd, 369 Euston Road, London NW1 3AR.*

ARE THE RULES CORRECT?

(by Philip Giulian)

I play correspondence chess purely for enjoyment. Of course, there are several factors which contribute to this, but my overriding philosophy is to enjoy myself. I want to play chess and have the game decided by who plays best, and not by some legal technicality. Although I stick rigidly to the rules myself, I tend to turn a blind eye to some of my opponents' irregularities, unless I suspect he is "at it". For example, if my opponent forgets to write down his/her move, or the move is illegal, I send it back asking for clarification. I don't impose the statutory penalty. I don't usually claim if my opponent oversteps the time limit slightly. My thinking is quite simple. There are so many ways of cheating in correspondence chess, especially fiddling of dates, that I don't feel it right to penalise somebody who is being honest! No doubt there are many people who are appalled at my unprofessional attitude, but I feel that in correspondence chess, probably more than in any game, we depend on the goodwill of our opponents. I am certainly not criticising anyone who adheres strictly to the rules, nor am I suggesting that we don't have rules or even change those I have already mentioned. I do feel, however, that games should be decided on chess. This chess should be as near as possible to over-the-board chess and the rules of correspondence play should emphasise that the winner of the game is the player who plays best. With this view in mind, I would like to examine three of the controversial rules of correspondence chess.

1. Clerical Errors

I am sure nearly everyone has been involved in these at some time. Your opponent plays a ridiculous move and then resigns shortly afterwards. According to my philosophy, your opponent should be allowed to change his move. After all, this is a non-chess mistake. In practice, it is impossible to allow this. How can you determine the blunder was a clerical error or a "chess" mistake? To try to do so would obviously lead to a minefield of complications which could not possibly be covered by the rules. Yet this does not alter the fact that this is a most unsatisfactory way of winning the game.

A comparison with over-the-board chess is not helpful. Apart from some "sealed move" situations, you cannot lose an over-the-board game through clerical errors. In fact if you were to examine the scoresheets of even the best players you would be amazed at how many mistakes they contain. I would argue therefore that it is clearly wrong to place such an emphasis in correspondence play on clerical accuracy.

I believe the solution is quite simple. A player, if he wishes, should be allowed to use two notations. In international games, these would be numerical (which is compulsory at present) and algebraic (English or German). Unless the two notations coincide the move would be treated as ambiguous and the statutory penalty imposed as at present. Such a system would virtually eliminate clerical errors. The only possible problem which I can see is if somebody doesn't understand algebraic notation. I would point out that this is the *only* notation currently allowed in over-the-board chess internationally and domestically and so surely this cannot be a valid stumbling block.

2. Overstepping the Time Limit

In over-the-board chess, if you overstep the time limit, you lose the game. In "domestic" correspondence games the situation is the same. With the relatively short time available to finish the game, this is necessary, and I doubt if anyone would advocate change. In international games, things are quite different. A player who oversteps the time limit has his "clock" returned to zero, and only if he oversteps the limit again does he lose on time. There is a strong body of opinion that this should change to bring these games into line with all others.

In defence of the status quo, I feel we have to examine why this rule exists in the first place. International correspondence games last a considerable time, often several years. The average time per move is three days. Suppose a game has been continuing for two or three years and a player has left himself, say, five days for the last move before the time control. Then disaster strikes: the player goes down with flu, there is a death or serious illness in the family, the player is sent away on work etc. The player oversteps the time limit and loses the game after two or three years' play through no fault of his own. The only alternative is to allow appeals to the arbiter, but how is he supposed to decide? Does the player have to prove his case? Is he supposed to produce a sick line from his doctor? Or a death certificate? Or a letter from his employer? The advocates of change will argue, "what happens if this occurs after the first exceeding of the time limit?" Basically the answer would be, "tough" (except in the case of long-term illness). Fundamentally, it all comes down to: do we want to play chess or win because of some mishap to our opponent?

3. Conditional Moves

There has been considerable controversy in recent times about what happens if your opponent plays the conditional move you offered. Does he have to make another move? This arises after something like: You play QxQ (check) and offer "if KxQ then R x pawn." Your opponent sends the card back having played only KxQ. What happens then? Should your opponent be penalised for

SCOTTISH CCA RATING LIST

by Michael Dyer

not "playing" your RxP and making his next move? Even the law-makers can't make up their minds. In domestic games, the opponent does not have to "play" the RxP and make his reply, but in international games he does. Those in favour of the domestic ruling will argue that nobody should have to make two moves at the same time and you don't have to do this in over-the-board games either. I believe this point of view is erroneous. Consider the sequence of moves I gave above. In practice I would consider the implications of QxQ check, KxQ fully (as best I could) knowing that my opponent's reply was effectively forced. I would then play QxQ check. My opponent would reply KxQ and I would immediately play RxP. This, I believe, is effectively the same as giving a "conditional" move in correspondence games. More importantly I feel we should consider the implications of not forcing the acceptance of the conditional reply. Offering conditional moves is very risky as it allows your opponent to know of your next move before making his reply. Your opponent can analyse the line you give, either accept it or play something different. Now in addition to this, the domestic rules allow your opponent to play the KxQ without making another move. This gives your opponent several days extra thinking time (two months in some games!), knowing your reply is going to be RxP. In theory you could change your mind, but in practice you would always play RxP. In this situation I really feel it is stupid for anyone to offer conditional moves. I would add also that not forcing the acceptance of the continuation and also probably reducing the number of such offers, will increase considerably the length of the game (up to two months per move) and also add to the cost of the game. Therefore, in conclusion, I feel a player should only have to accept one conditional move at a time and not long strings of moves.

I know that these three rules are controversial areas. I have explained my viewpoints but it is important that the rules represent the consensus of opinion as far as possible, so I would urge you to send your thoughts to either Alan Borwell or Alan Hind.

GRADINGS (by Philip Giulian)

At present players with International (ICCF) gradings do not have Scottish gradings. Andrew Muir questioned this approach in the last issue of our Magazine. Andrew points out that not all games played in Scottish tournaments are sent to the ICCF Grader, therefore these games don't count towards ratings for those players with ICCF grades.

Andrew is correct, but the present system we have is clearly the most accurate available. It is simply a question of trying to ensure that gradings are based on as many games as possible. Scottish events like the Championship and "friendly" internationals are sent to the ICCF Grader and players with ICCF ratings tend to play very few, if any, other domestic games. On the other hand, games played in ICCF events are seldom sent to the SCCA Grader and, in the past, this has left some players with SCCA ratings which have not included hundreds of games. For this reason we decided on the present system.

This list contains all games reported to the Grader by 31st December 1992. It includes all SCCA tournaments listed in the Magazine. Where players have an ICCF rating, in the new list effective from 1/7/93, then these ratings are shown marked "i". Provisional ratings (less than 30 results) are denoted *.

I will be producing a more detailed list, showing number of games and changes in rating etc in July/August. Any member interested in receiving this list should send me a large (A4) SAE.

I am compiling an up-to-date list of Titleholders and Scottish Master Norm holders. These will be published in the next Magazine, along with the qualification criteria.

If a member has a query about any aspect of the grading process, please get in touch.

Name	Grade	Name	Grade
AIRD, I	1845	BRADY, S	1600
ALEXANDER, M	1435*	BROWN, AC	1845*
ANDERSON, J (Dundee)	1625*	BRYSON, DM	2575i
ANDERSON, J	1975*	BURRIDGE, R	1570
ANDERSON, KD	1575		
ANDRES, F	1235*	CAIRNEY, JS	1625
ARMSTRONG, A	1455	CAMERON, W	1555
		CAMPBELL, AWI	1810*
BAILEY, EA	1725*	CAMPBELL, IS	2165i
BARRETT, T	1650*	CAPSEY, SR	1505
BAXTER, RWM	2375	CARLIN, J	1695*
BEACON, R	1715	CARROLL, PJ	1350*
BEECHAM, CR	2250i	CASSAR, P	1945*
BELL, J	1265*	CASSIDY, J	1450*
BEVERIDGE, CTW	1425	CHALMERS, BW	1690
BIRD, AGE	1800	CHAPMAN, BP	1720*
BIRD, GH	2145i*	CLARK, SL	1850*
BIRRELL, R	1680*	COCHRANE, R	1830*
BLENOWE, J	1650	COFFIELD, P	1820
BORLAND, D	1395*	COOK, WM	1760
BORWELL, AP	2325i	COOPER, M	1885*
BOWN, CJ	1635	COPLEY, J	1815*
BOYLE, CF	1995	COSGROVE, D	1500*
BRADY, JJ	1465*	CRAIG, TJ	2330i

Name	Grade	Name	Grade	Name	Grade	Name	Grade
CRICHTON, D	1715*	HALL, F	1520	MACKIE, WV	1620*	MOIR, PJ	1570*
CROASDALE, ME	1355*	HALLIWELL, TF	1975*	MACKINTOSH, IA	1780*	MONTGOMERY, RS	1735*
CUMMINGS, DR	1760	HAMMETT, MA	2175*	MacLEOD, MJ	1905	MOOHAN, M	1865
DICKSON, R	1745	HANLEY, M	1165	MARKS, IA	2110i	MORRISON, GJ	2305i
DOCHERTY, A	1270*	HARPER, W	1815	MARSHALL, IH	2145i*	MORRISON, T	1535
DONKIN, C	1600*	HARVEY, D	1735	MARTIN, B	2325i	MORTON, GA	2035
DOWN, NA	2195	HARVEY, H	1115*	MARTIN, S	1695*	MUIR, AJ	2595i
DOWSON, R	1655*	HERRIES, JM	1825	MAXWELL, A	1730	MUIR, PS	1710*
DUNN, MH	1850*	HILTON, S	1505	MAY, M	1700*	MURRAY, JS	1800
DYER, MT	2055i	HIND, A	1825	MAYO, M	1360*	NEIL, D	1820
EADIE, J	1475*	HISLOP, AT	2235i	McADAM, D	1265*	NISBET, A	1580
EBDON, R	1370*	HUGHSON, D	1685*	McALPINE, KB	2545i	NORRIS, AJ	2360i
FALCONER, JN	1690	HULME, W	1970*	McBETH, MJ	1945	O'DONNELL, J	1765
FERRY, P	1630	HUTCHISON, CM	1490	McCARTAN, J	1585*	PARKER, J	1780*
FEINSTEIN, A	1965*	HUTCHISON, WJ	1455	McCLELLAND, K	1075*	PARSONS, DG	1430
FRYER, KM	1870*	INGLIS, RA	2310*	McEWAN, NR	1540*	PEARCE, MF	1675
GANNON, M	1450*	INNES, RM	1825	McGHEE, ME	1740	PELLS, R	1395
GARVOCK, JM	1300	JACK, JPE	1730	McGHEE, M	1770*	PENMAN, DW	1610
GAWLIK, H	2205i	JACKSON, PJ	1610	McGLINCHEY, W	1460	PETRIE, A	1270*
GIBB, DA	1670*	JENKINS, DM	2290i	McGOWAN, A	2145	PROUDLER, VA	1530*
GIBBS, DV	1555*	JOHNSTON, TG	2185i*	McGOWAN, P	2200	PYRICH, GD	2255i
GILLAM, SR	2365i	KILGARIFF, AD	1715	McINTOSH, A	1255*	QUINN, D	1985
GILLESPIE, DL	1645	KILGOUR, DA	2505i	McINTYRE, JW	1785	REEMAN, I	2010
GILLESPIE, D	2055*	KILPATRICK, R	2235i*	McKAY, CC	1845	REID, D	1950
GILLIES, N	1180*	KYNOCH, RJP	1645*	McKEAN, H	1455*	REID, G	1655
GIULIAN, PM	2410i	LEASK, ME	1520*	McKENZIE, F	1245	ROACH, WS	1830
GIULIAN, RA	1815*	LIVIE, DM	2290*	McKENZIE, LR	1750*	ROBERTS, MP	1875*
GOLIGHTLY, I	1320*	LIVIE, GWG	2120i	McKERRACHER, D	1760	ROSS, DI	1625*
GOODWIN, B	1585*	LLOYD, G	1610*	McKNIGHT, G	1640	ROSS, FR	1425
GORDON, K	1790	LOUGHRAN, R	1325*	McMENEMY, J	1285	ROSS, M	1960
GOWLAND, S	1680	LUMSDEN, JPL	1640	McMENEMY, S	1295	RUTHERFORD, W	1955*
GRANT, AG	1800	MacARTHUR, JM	1825	McMONIGLE, AL	1500*	SADOWSKI, Z	1755
GRANT, BW	1545	MacGILCHRIST, S	1820*	McMORRAN, T	1685	SALTER, D	1770
GRANT, PB	1555*	MACGREGOR, CA	1320	McNAB, CA	2525i	SAVAGE, D	1740
GRANT, WM	1735*	MacKAY, I	2060*	McNAB, TJC	1710*	SEYFRIED, J	2275i
GRAYSON, MC	1750*	MacKENZIE, K	1740*	McQUEEN, MC	1615*	SEYFRIED, K	1790
GRAYSON, MC	1750*	MacKENZIE, SG	1685*	McREA, P	1765*	SHANKLAND	1705*
GREEN, W	1285*	MacQUEEN, A	1545*	McROBERTS, DG	1520		
GROSE, KJ	1335*			McTAGGART, J	1690		
				MILLIGAN, B	1350		
				MITCHELL, IWS	1580		
				MITCHELL, M	2170		
				MITCHELL, SR	1570*		

Name	Grade	Name	Grade
SHAW, AJ	2365i	THOMSON, A	1520*
SNEDDON, G	1475*	THOMSON, T	2125
SNEDDON, I	1865	THORNTON, J	1235*
SPROTT, GR	2290i	TURNER, RF	1905
STALLARD, J	1425		
STALKER, AG	1860*	WALLWORK, GE	2190i
STEPHENSON, L	1620	WARD, J	1510
STEVENSON, JAB	2330i	WATSON, J	1630
STEWART, KWC	2175i*	WAUGH, PCH	1365
STOKES, RW	1675	WEIR, JE	1800*
SWANN, A	1750	WHITTAKER, IP	1795
SWYSTUN, MA	1950	WICKENS, TS	2330i
		WILSON, A	1405
TAIT, T	1790*	WILSON, AR	1610*
TANKEL, A	2125i	WILSON, I	1380*
TAYLOR, J	1355*	WOOD, G	2125i*
TAYLOR, TAH	1685*	WRIGHT, A	1900*
TAYLOR, WD	2020*		
THOMPSON, E	1760*	YOUNG, S	1835
THOMPSON, ID	2310i		

ICCF RATINGS 1/7/93

* denotes not fixed rating () indicates number of games in ICCF system

MUIR, AJ	IM 2595	(27)	SPROTT, GR	2290	(57)
BRYSON, DM	GM2575	(122)	SEYFRIED, J	2275	(34)
McALPINE, KB	IM 2545	(25)	PYRICH, GD	2255	(222)
McNAB, Dr CA	2545	(31)	BEECHAM, CR	2250	(113)
KILGOUR, DA	IM 2505	(110)	HISLOP, AT	2235	(77)
GIULIAN, PM	IM 2410	(244)	KILPATRICK, R	2235*	(25)
GILLAM, SR	2365	(76)	GAWLIK, HJ	2205	(127)
SHAW, AJ	2365	(38)	WALLWORK, GE	2190	(117)
NORRIS, AJ	2360	(63)	JOHNSTON, TG	2185*	(25)
CRAIG, TJ	2330	(87)	HAMMETT, MA	2175*	(22)
STEVENSON, JAB	2330	(45)	STEWART, Dr KWC	2175*	(20)
WICKENS, TS	IM 2330	(147)	CAMPBELL, IS	2165	(105)
BORWELL, AP	(IM)2325	(209)	BIRD, Prof GH	2145*	(21)
MARTIN, BJ	2325	(69)	MARSHALL, IH	2145*	(26)
INGLIS, RA	2310*	(22)	TANKEL, A	2125	(39)
THOMSON, ID	2310	(59)	WOOD, G	2125*	(25)
MORRISON, GJ	2305	(35)	LIVIE, GWG	2120	(47)
JENKINS, DM	2290	(43)	MARKS, IA	2110	(52)
LIVIE, DM	2290	(35)	DYER, MT	2055*	(23)



BITS 'n' Pieces



by ian marks

Whoever said that there are more books published on chess than on any other game has obviously never seen the golf section of my local public library. Still, it can't be denied that there are an *awful* lot of books available on the Royal Game. What is surprising is that there are so few devoted to CC.

All the more welcome then is the recent appearance of *Journal of a Chess Master* (Thinkers' Press) by Stephan Gerzadowicz. Readers of the mag might have encountered Stephan before: he's an American CC Master who has been ranked in the US top ten, and this is a collection of 70 of his games, all deeply annotated (and I mean *deeply*) with a candour and enthusiasm which is all too often lacking in these days of languageless database publishing.

It's quite unlike any other games collection you'll have seen before. Each game is a journey of adventure through the author's imagination across the 64 squares. Not only will you find blunders and brilliancies, you'll also encounter *Blazing Saddles*, *Ubiquitous Trees* and the *ezdinegruG*. Ever seen a decisive game end without any captures? There's one in here. And have you ever wondered why Wile E. Coyote never quite seems to capitalise on his early advantage.....?

The printing, diagrams and overall production are superb. My only gripe (and it's not the author's fault) concerns the editing: there are several places where the text/layout could have been better structured to take account of the fact that the bulk of the material appeared in original form in a number of US chess publications. Here and there it reads a tad disjointedly.

But no diamond is perfect. It's a GREAT book, one which will instruct, entertain and inspire you again and again. Get a copy. You don't know what you're missing.

To whet your appetite, here is a recent game of Stephan's (not in the book), which shows him in his King's Indian element. The commentary is his.

THE IMMORTAL SAGE OF CONCORD GAME

Ralph Waldo Emerson, my old neighbour from down the road a piece, was known for many things. He wrote essays and poetry, lectured far and wide, and loaned Henry (Thoreau - IM) a prime piece of shorefront property. Less well known is that he had much to say about chess. Let's let him say it in *italics*.

Show frankly as a saint would do, your experience, methods, tools and means. Welcome all comers to the freest use of the same. And out of this superior frankness and charity, you shall learn higher secrets of your nature, which gods will bend and aid you to communicate.

Seems worth a try.

White: William Henry
Black: Stephan Gerzadowicz

APCT 91 Rating Tnmt 3, 1991-92

King's Indian, Averbakh E73

1	d4	Nf6
2	c4	g6
3	Nc3	Bg7
4	e4	d6
5	Be2	0-0
6	Bg5	

The Averbakh system. The immediate point is that 6 ... e5? 7 dxe5 dxe5 8 Qxd8 Rxd8 9 Nd5 costs Black material. (Although amazingly enough, if you

turn to p.218 of Jimmy Adams' translation of Boleslavsky's *Selected Games*, you'll find the Don Corleone of the King's Indian telling us "If Black replies with the routine 6 ... e5, then White, after closing the centre with the move 7 d5, carries out a pawn attack on the king's flank ..." - IM)

Accordingly, he often plays 6 ... c5, a thematic counter to many Bg5 systems. But I've always liked ... e5 lines. The next four notes are for King's Indian Junkies. Normal people may ignore them. *That man shall be learned who reduceth his learning to practice.*

6	h6
7	Be3	

The rare 7 Bf4 was tried in the Poland-USA match 1987-90 by Ryszard Gasiorowski. He was on Board 1 because he is an International Master; I was on Board 1 because I had the only name on our team as long as his! I offered the gambit 7 ... Nc6 8 d5 e5 9 Be3 Nd4!? but he declined the invitation to follow Donner-Ree 1968: 10 Bxd4 exd4 11 Qxd4 Re8 12 Qd3 Qc7 13 f3 a6 14 Qd2 c6 15 Bd3 cxd5 16 cxd5 Nd7. Instead he played 10 Nf3?! I gained an advantage after 10 ... Nxe2 11 Qxe2 Ng4 12 Bc1 f5 but could only draw. *Every hero becomes a bore at last.*

7	e5
8	d5	

ECO 2nd edition 1991, E73/10 (56) gives Agzamov-Kupreichik 1982: 8 dxe5 dxe5 9 Qxd8 Rxd8 10 Nd5 Na6

11 0-0-0 Kh7 12 Nxf6+ Bxf6 13 Rxd8 Bxd8 14 Nf3 f6 as equal. The *NIC Keybook* adds the move 15 c5 and calls it +=. Hmmm.

8	c6
9	Qd2	h5

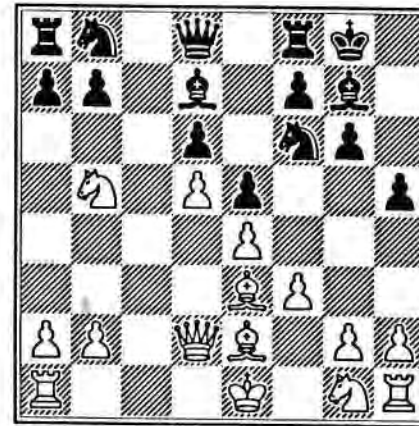
I didn't like 9 ... Kh7 10 h4...

10	f3	cxd5
11	cxd5	Bd7

White was slightly better in both Albur-Trapl 1976: 11 ... Na6 12 Nb5 Nc5 13 Qc2 b6 14 b4 Na6 15 a3 ... and Ubilava-Braga 1985: 11 ... a6 12 h4 b5 13 Nh3 Bxh3 14 Rxh3 Nbd7 15 Rh1 Qc7 16 Kf2 Rf8 17 Rhc1 Qb7 18 b4! with the idea of 19 a4.

The text was seen in Petursson-Gallagher 1990 which was unclear after 12 Bd3 Na6 13 Nge2 Nc5 14 Bc2 a5 15 a4 Ne8 16 0-0 Nc7 17 Ra3 N7c6. Polugaevsky suggests 12 Bb5!? or 12 h4!?

12 Nb5



New? It is certainly a direct challenge to 11 ... Bd7. White attacks two pawns. The only way to hold them is to eliminate the knight. But I would not play 12 ... Bxb5 13 Bxb5 and then proceed "normally" with 13 ... a6 or 13 ... Nbd7 or some such. White would have a clear advantage in the two bishops, more space and the absence of a key Black attacker.

But I *did* look at 12 ... Bxb5 13 Bxb5 Nxe4! 14 fxe4 Qh4+ 15 Qf2 (no?) Qxe4. Does Black have enough? Who knows? It looks as if he can bag d5 because White must defend against 16 ... Qb4+ and ... Qxb5, unless he wants 16 Qd2 Qh4+. Whatever, I would not object to playing Black.

But I preferred a different sac -

12 Ne8

I would not have the laborer sacrificed to my convenience and pride.

13 Nxa7

I went for this because it presents an archetypal King's Indian morality play - The Grasping Materialist versus The Starry-Eyed Idealist. Hey - I have a great game; I just don't have an a-pawn.

I didn't look at any specific lines.

Nature hates calculators; her methods are saltatory and impulsive. I just figured something good would turn up. Shallow men believe in luck.

13 f5

One thing is for sure; I must move quickly, before he has time to consolidate. *In skating over thin ice our safety is in our speed.*

14 Qb4

There are men who rise refreshed on hearing a threat.

Bravo! He's a consistent materialist. Now I need not even consider trying to "consolidate" - I'm a pawn down, with more going. White is challenging me to show what I have. *Our chief want in life is somebody who shall make us do what we can.*

14 fxe4
15 Qxb7

The mind goes antagonizing on.

15 Qa5+

Seizing the opportunity to force him to move his king since the otherwise desirable 16 Bd2 hangs his wayward knight. And 16 b4 Qa3 17 Kf2 (17 Bf2 Qc3; 17 Bd2 Qxa7) exf3 is similar to the game and I don't think any better for White.

16 Kf1 exf3
17 Nxf3

Figuring he's going to bag a rook, White lets a knight go. After 17 gxf3 Black likely proceeds as in the game, though 17 ... Rxa7 comes into consideration since it would be so difficult for White to mobilise his kingside.

17 e4
18 Qxa8 exf3

I thought I said that. Now after 19 Bxf3 Black has several promising continuations: 19 ... Bb5 with Nd7-e5, say, or 19 ... Nf6 (-g4) or 19 ... Nc7 20 Qb7 Nxd5. Advantage to Black? After the text, Black is winning.

19 gxf3?! Bh3+

The most attractive class of people are those who are powerful obliquely....

20 Kf2

If 20 Kg1 there's more powerful obliquity in 20 ... Bh6! Then both 21 Bf2 and 21 Bd4 are met by 21 ... Qd2 (with the idea of Qg5) and the heavenly point is 21 Bxh6 Qc5+. *God said, I am tired of Kings, I suffer them no more.*

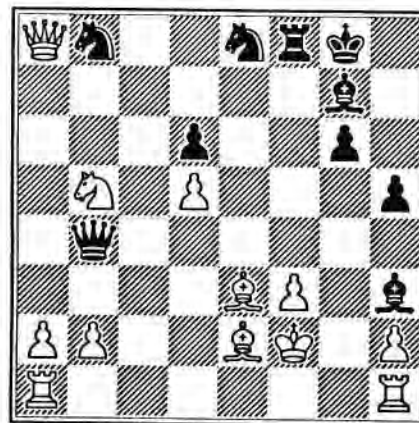
20 Qb4

With an obvious eye to the kingside but also with the surprising threat of 21 ... Nc7 winning the wayward queen! Now if 21 Nc6, Black wins with 21 ... Qh4+ 22 Kg1 Nxc6 and 23 ... Bd4. Likewise, Black has too many threats after 21 Kg3 Nc7 22 Nc6 Qxb2. So White plays to stop ... Nc7 and to control d4.

21 Nb5

Please send games (preferably annotated to Games Editor:

George Pyrich,
53 Dunnikier Road,
Kirkcaldy,
Fife, KY1 2RL.



21 Nc7!

Anyway! as all annotators love to say. *All mankind love a lover.* (Yup, that's Emo too.) Same old theme - if 22 Nxc7 Qh4+ 23 Kg1 Bd4. *When you strike at a King, you must kill him.*

22 Qa3 Qh4+
23 Kg1 Nxb5
24 Qd3 Nd4

A pleasing final point - the d4 square is often a Black focus in the King's Indian - ... Bg7, ... e5, ... Nf6-e8-c7-b5-d4.

25 Rf1 Bxf1
0 1

So what happened? Pretty much a "formula" game. Caissa hath decreed that in most King's Indians, Black should head for g1 posthaste. *That splendid results ensue from the labors of stupid men, is the fruit of higher laws than their will, and the routine is not to be praised for it.*

Hmmm. He also said, "I hate quotations."

(Stephan's *Journal* should be available from any of the major dealers. Failing that, try the publishers: Thinkers' Press, PO Box 8, Davenport, IA 52805, USA) (Or *Qualitext Business Services!* - Editor).

Postscript to Marks-Fallone in the last issue: after 1 Nf3 d5 2 c4 Bf5 3 Qb3 e5 4 Qxb7 Nd7 5 cxd5 Bc5 6 d3 Ne7 7 Qb3 Rb8 8 Qd1 e4 9 Nh4 exd3 10 Nxf5 Nxf5 11 Qxd3 Qf6 12 Nc3 Ne5 13 Qd1, John Clayton suggests, instead of the game's 13 ... 0-0, 13 ... Bxf2+. His line runs 13 ... Bxf2+ 14 Kxf2 Ne3+ 15 Kxe3 Rb4! 16 Kd2 (More or less forced in view of the mate threat on f4. Moves like 16 Ne4 or 16 g3 run into 16 ... Ng4+.) Rd4+ 17 Kc2 Rxd1 18 Kxd1. White should be OK here. For one thing, he has a material advantage; for another, I am very suspicious of lines where one player exchanges off his developed pieces! John gives 18 ... Ng4 19 Kc2 Nf2 20 Rg1 Qf5+ 21 e4 Nxe4 22 Bb5+ "and Black is in difficulties". He also suggests that if Black castles, he loses the initiative. Indeed, after something like 18 ... 0-0 (instead of 18 ... Ng4) 19 e4 Ng4 20 Kc2 Qf2+ 21 Bd2 Ne3+ 22 Kd3, it looks as though Black is starting to run out of steam (neither 22 ... Nxe2 nor 22 ... Nxf1 looks anything special) and White is beginning to unravel. John's idea is undoubtedly attractive, but I'd say Mike was right in trying to build an initiative. More pieces = greater complications. Swapping them off eases the defender's task.

THE CHESSMACHINE

This ultimate chess playing system is now available to you in three outstanding versions from CBSoftware:



The Chess Machine 'MADRID' *the outright winner of the World Computer Chess Championships, Madrid 1992* is available commercially for the very first time!!

MADRID - Internal 1995 £14.95
EC 1 MB - External 1995 £14.95
DR 1 MB - Internal 1995 £14.95

"I was astonished by the professional appearance of the program ... The VGA graphics are excellent and there are many nice touches ... I watched International Masters being sliced up with some regularity ... It is a formidable opponent ... Apart from the top-of-the-range Mephisto Computers, this was the first silicon player I felt was capable of providing me with an interesting game ... The ChessMachine is easy to use and provides a strong opponent at an affordable price." — GM John Nunn, from a review in The British Chess Magazine.

ChessMachine Features:

- Infinite analysis, different playing styles
- Sharp Diagram printing and export on dot-matrix as well as laser printers.
- Large, user-adaptable opening library.
- In-depth analysis displayed from recent major tournaments.
- Game export in ASCII text. Perfect for Authors and journalists.
- Solve for mate and user definable playing levels.
- Full, 12-month warranty.

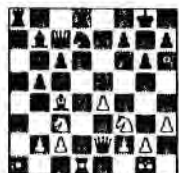
OTHER CHESSMACHINE PRODUCTS

Beginner's Tutorial	£29.95
Intermediate Tutorial	£29.95
The King Program	£69.95
Commodore 64 Final Chess Card	£39.95

From December 3 to 6, 1992 The ChessMachine took part in the **Principe de Asturias** rapid chess tournament in **Oviedo, Spain**. This was a strong tournament with 500 participants, of which well over 100 are international title-holders. Grandmaster Gavrikov, won with 9½ but The ChessMachine finished 45th with 7½ points, together with strong grandmasters like Chandler, Flear and Khalifman. The ChessMachine obtained draws against Makarichev and Azmaiparashvili, and won against Flear to obtain a grandmasterly tournament performance rating of 2525!

The ChessMachine
 IM Silvio Danallov (2455, Bulgaria)

1 d4 d6 2 e4 Qf6 3 Qc3 e5 4 Qf3 Qbd7 5
 Qc4 Qc7 6 0-0-0 7 We2 c6 8 a4 We7 9 h3 h6
 10 Qd1 a6 11 Qc3 Qb7 12 dxe5 dxe5 13 Qh4
 g6 14 Qh6 Qf8 15 Qf3 b5 16 axb5 axb5



17 Qg5 bxc4 18 We4 Qf8 19 Qxa8 Qxa8 20
 Qxf8 Qxf8 21 Qb5 Qb7 22 We7+ Qh8 23
 Qd6 Qd7 24 Wa2 Qxd6 25 Qxd6 We7 26
 Qxa8 h6 27 Qe6 Qg7 28 Qf3 Qh7 29 Qxc6 1-0

CBS Software, IM Malcolm Pein, 37 Marsh Lane, London NW7 4QJ. Tel: 081 959 0670. Fax 081 906 8771.

GAMES SECTION



Please send games
 (preferably annotated)
 to Games Editor

Selected by
GAMES EDITOR
 George D. Pyrich,
 53 Dunnikier Road,
 Kirkcaldy,
 Fife, KY1 2RL.

8 ♖d4!?

The best I could come up with. Geoff told me that he had met this move only once in a previous postal game. I realised at this early stage in the game that White has to force some exchanges even if it means giving back some material because his under-developed position is horrible. Geoff didn't catch on to what I had in mind, otherwise he might've played a different eighth move.

We begin with a welcome to new contributor, John Clayton, who annotates a recent friendly game featuring the always lively Latvian Gambit.

White: J.A. Clayton
Black: G. Chandler

Latvian Gambit C40

1	e4	e5
2	Qf3	f5
3	Qc4	fxe4
4	Qxe5	d5
5	Qh5+	g6
6	Qxg6	hxc6?

8 Qc6?

Correct is 8 ... Qf6!

9 Qxd5!

It's important for White to get the Queens off the board.

9 Qxd5

If 9 ... Qxd5? 10 c4! wins a piece.

10	Qxd5	Qxd5
11	Qc3	Qc6

Now the game begins and I was offered two conditionals: if 7 Qxg6+ Qd7, or if 7 Qxh8 Qf7. I chose the latter.

7	Qxh8	Qf7
---	------	-----

Geoff tells me theory ends here.

This Bishop has an elastic band attached to it, I think, because later in the game it bounces from c6 to e4 and back to c6 again.

12	f3!	♖f6
13	♗xe4	♗xe4
14	fxe4	♗xe4
15	0-0+	♗g7
16	d3	

It would be nice to be able to achieve 17 ♗h6+ ♖xh6 18 ♖xf8, but first White would need to play 16 d4. It would work if Black replied with 16 ... ♗xc2, but surely no postal opponent would miss such an easy trap. The text allows Black to get in an important check, but it falls in with my plans.

16	♗c5+
17	♗h1	♗c6

The Bishop having to move back to c6 gives me a handy tempo.

18	♗f4	♗d7
----	-----	-----

Black gives up his c-pawn in order to develop a piece, but I felt he should have tried to hang on to it because it proves to be a crucial point for White at the end.

19	♗xc7	♖c8
20	♗g3	♗d4
21	c3	♗e5
22	♖ae1	♗xg3
23	♖e7+	♗h6
24	hxg3	♗c5
25	d4	♗e4
26	♗h2	♖h8
27	♖f4	♗g5+

28	♖h4	♖xh4+
29	gxh4+	♗xh4
30	c4	♗f6
31	♖c7	♗g4+
32	♗g1	♗e4
33	♖e7	Resigns
	1	0

Black's queenside pawns soon fall and, of course, White would be very careful to prevent Black playing ♗g3-♗xg2-♗f2 or h2 then ♗f3 or h3 mate! If 33 ... ♗d3 then 34 ♖h7+ and Black cannot play 34 ... ♗g3 because of 35 ♖h3+.

△ △ △ △ △

Next is a game from regular contributor David Cumming, who annotates in his usual style!

SCCA Handicap 1992/93

White: T.N. Talbot
Black: D.R. Cumming

French Defence, Winawer Var. C15

1	e4	e6
2	d4	d5
3	♗c3	♗b4
4	a3	♗xc3+
5	bxc3	dxc4
6	♗g4	♗f6
7	♗xg7	♖g8
8	♗h6	♗bd7
9	♗e2	c5
10	g3	b6
11	♗g2	♗b7
12	0-0	♗c7
13	a4	♗g4

14	♗f4	f5
----	-----	----

With equality. Georgiev-Psakis, Sarajevo 1986, continued 15 a5? ♗(d)f6!, with advantage to Black! After 15 h3! Black has no choice but to play 15 ... ♗(g)f6, and is a definite improvement on Georgiev-Psakis, although Black still stands roughly equal.

15	h3!	♗gf6
16	♗b2	

16 ♗a3! was probably better.

16	♗d5
17	♗d2	0-0-0
18	a5	

White again could have played 18 ♗a3! instead with some annoying pressure, although with a lost tempo to the previous note.

18	c4
19	axb6	axb6
20	♖a4?!	b5
21	♖a2?	

Very indecisive, as shown by White's follow-up move of 22 ♖a7.

21	♗d7f6
----	-------	-------

Played to uncover the rook's protection of d6, which would be an important transit square to e5 for White's queen's bishop, should White play a subsequent ♗a3.

22	♖a7	♗c7
----	-----	-----

23	♖fa1	h5
24	♗f4	♗fd5
25	♗h6	♖h8
26	♗c1	h4
27	♗f4	♖hg8

Played to prevent the white Knight forking Queen and Rook from the g6 square. Not 27 ... ♖(d)g8?, which allows White to play 28 ♗a3 with the idea of 29 ♗d6 and 30 ♗e5.

28	♗d5	♗d5
29	♗e1	♗g7
30	♗h2	hxg3+
31	fxg3	♗f4

Immune from capture, this threatens to remove White's g2 Bishop, whilst pressurising h3 and protecting the black pawn on e6.

32	♖a8+	♗c7!
----	------	------

Not 32 ... ♗xa8? because 33 ♖xa8+ ♗b7 34 ♖xd8 ♖xd8 35 gxf4!, in which case White would have exchanged his two Rooks for a black Rook and 2 minor pieces, and would've also taken most of the sting from Black's initiative.

33	♖xd8	♗xd8
----	------	------

At this point, White blundered with 34 ♗f3, committing one of the postal chess player's greatest sins, i.e. setting up the position wrongly! However, Black has a winning position, with threats of ♗xg2 followed by f4 to defend and also having R+B unable to provide much assistance.

△ △ △ △ △

The next game was played in Section 2 of World Semi-Final XIX, in which both Alan Borwell and Colin McNab are participating.

(Notes are provided by Alan).

White: Veikko Nieminen (FIN) 2375

Black: Alan Borwell (SCO) 2320

Sicilian - Kan Variation B42

1	e4	c5
2	♘f3	e6
3	d4	cxd4
4	♘xd4	a6
5	♙d3	♙f6
6	0-0	♗c7
7	♗e2	d6
8	c4	g6
9	b4!?	

This was unexpected and challenging. Black must find an early counter to White's expansionist strategy.

9	♙c6
10	♙xc6	bxc6

Better to recapture with the pawn to provide support for a possible d5 and opening the b-file for counter-action.

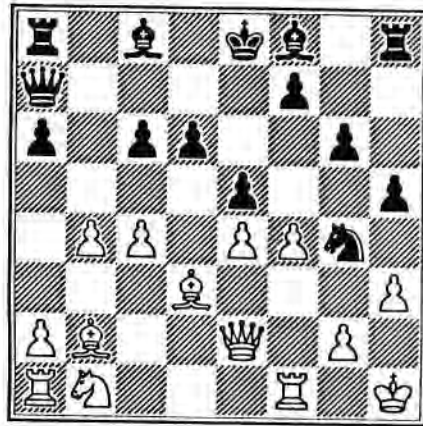
11	♙b2	e5!?
----	-----	------

Somewhat risky, but I was looking to create tactical possibilities as, positionally, White is better.

12	f4	♗a7+
13	♖h1	

I expected 13 c5 dxc5 14 ♙xe5 cxb4+ 15 ♖h1 ♙g7 16 ♙c4 0-0 or even 14 fxe5 when Black has problems to solve!

13	♙g4!
14	h3	h5!



Is this really good? If White can force the Knight away, then Black would find it very difficult to hold the position. However, the "gallant horseman" does not intend to be harassed by mere pawns!

15	♙d2	
----	-----	--

Maybe White should again have tried the immediate 15 c5 dxc5 but not 16 hxg4 hxg4+ 17 ♖g1 cxb4+ 18 ♖f2? g3 (or 18 ♗f2? ♙c5). Instead White should try 16 ♙c4 or fxe5 and ignore Black's provocative Knight!

15	♖b8
----	-------	-----

16	a3	
----	----	--

An alternative was 16 ♘f3 ♙g7 17 c5 ♖xb4 18 a3 ♖b3 19 cxd6 ∞. Now how can Black continue positively before White drives him back?

16	♗e7!
----	-------	------

A timely change of direction, combining defence as well as supporting the "mighty Knight".

17	g3?	
----	-----	--

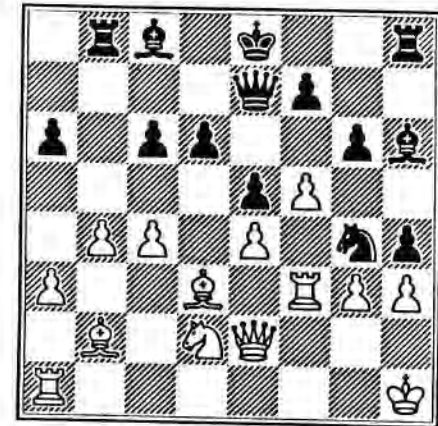
This is too cautious and provides Black with the opportunity to develop the attack. Not here 17 hxg4? ♗h4+ 18 ♖g1 hxg4 19 ♘f3 (only move) gx f3 20 ♗xf3 ♗h2+ 21 ♖f2 ♖h3! 22 ♗e2 ♗g3+ 23 ♖g1 ♗xd3 wins.

17	h4!
18	f5	

This is probably White's best chance. If 18 hxg4 hxg3+ 19 ♖g1 ♖h2 20 ♗f3 ♖xd2! (not 20 ... ♗h4? 21 fxe5! g2? 22 ♗xf7+ and White mates). If 20 ♗e3 then ♗h4!! 21 fxe5 ♖h1+ 22 ♖g2 ♗h3+ 23 ♖f3 ♙xg4+ 24 ♖f4 ♙h6 mate. If 18 ♖f3 hxg3 19 ♖xg3 exf4 20 ♙xh8 fxg3.

18	♙h6!
19	♖f3!	

After 19 hxg4 ♙xd2 20 ♗xd2 hxg3+ 21 ♖g1 ♖h2 22 ♙e2 gxf5! 23 exf5 ♗h4 24 ♗e3 (if 24 ♖d1 e4!! wins) ♖h1+ 25 ♖g2 ♗h3+ 26 ♖f3 g2+ 27 ♖e4 ♗xe3+ wins.



The question now is when Black should capture on g3. If here 19 ... hxg3 20 ♖xg3 gxf5 21 exf5 ♙xd2 22 ♗xd2 ♗h4 23 ♗g2 ♙f6 is unclear. Alternatively if 21 ... ♗h4 22 ♗xg4 ♗xg4 23 ♖xg4 ♙xd2 24 ♖h2 ∞. Or if 19 ... gxf5 20 exf5 ♙xd2 23 ♗xd2 hxg3 24 ♖xg3 ♗h4 25 ♗g2 c5 26 ♙c4 ♙f6 27 ♙c6+ ♖e7 is also unclear.

So I concluded that the capture on g3 should be deferred with the plan to open the h1/a8 diagonal and loosen the b-file.

19	gxf5
20	exf5	♙xd2

The White Knight must first be eliminated, otherwise it will occupy the now vacated e4 square.

21	♗xd2	c5!
----	------	-----

Also considered here was: 21 ... hxg3 22 ♖xg3 ♗h4 23 ♗g2 c5 24 ♗c6+ ♙d7 25 ♗xd6 ♗xg3 26 ♗xb8+ ♖e7 27 ♖6+ ♙xf6 28 ♗xe5+ ♗xe5 29 ♙xe5 ♖xh3+, which is better for

Black. However, 24 ♖e2 ♗b7 25 ♖f3 ♗xf3 26 ♜xf3 and White may escape with reasonable prospects.

22 ♖e4 ♗b7
23 ♖d5!

White keeps finding his best chance. More hard work was needed to find a forced winning line. It was now or never to exchange pawns on g3 (I was beginning to worry about White intervening with f6, cutting off the ♜ from h4).

23 hrg3
24 ♜xg3 ♜h4
25 ♖g2

I expected 25 ♜g2 when I planned 25 ... ♖xd5 26 cxd5 (not 26 ♜xd5 ♜xg3 27 ♜c6+ ♖f8 28 ♜xd6+ ♖g7 winning) ♗f6 27 bxc5 ♖e4 28 ♜g8+ ♖d7 29 ♜xb8 ♜xb8 (or maybe 29 ... ♖f2+) 30 c6+ ♖c7 ♖ ♜b3/♖f2+ which is good for Black.

Now the "trojan horse" must retreat, having held the fort until support arrived from the major pieces.

25 ♗f6
26 ♖xb7

The main Black threat was ♖xd5 / ♜xg3/♗e4+.

26 ♜xb7
27 ♜g5 ♜e4+
28 ♖h2 ♜g8
Resigns
0 1

White loses material as well as facing continued mating threats, eg. 29 ♜xg8+ ♖xg8 30 ♜xg8+ ♖e7. White's f and c-pawns are en pris and Black's rook will penetrate the b-file. If 29 ♜d2 ♜xg3 30 ♖xg3 ♖xg3 ♜xc4 threatening ♖e4+ etc.

△ △ △ △ △

Next, in the same event, Colin McNab disposes of our President in convincing fashion. (Notes by Colin).

White: Dr. Colin A. McNab 2425
Black: Alan P. Borwell 2320

English Opening A21

1 c4 e5
2 ♖c3 ♖c6
3 g3 f5
4 ♖g2 ♖f6
5 e3 ♖e7
6 d4 d6
7 b4!

Exploiting the tactic 7 ... ♖xb4? 8 ♜a4+ ♖c6 9 d5 to get the queenside advance underway without spending time on the preparatory ♜b1.

7 0-0
8 b5 ♖a5

Naturally Black is reluctant to concede all the space on the queenside after 8 ... ♖b8 9 a4, but the positioning of the Knight on a5 will cause Black a lot of future difficulties.

9 ♜a4 c6
10 ♖d2 ♜c7

It might be worth trying 10 ... cxb5 here. After 11 ♖xb5 ♖c6 any White advantage is slight, while 11 cxb5 ♖e6! 12 ♖f3!? is quite unclear.

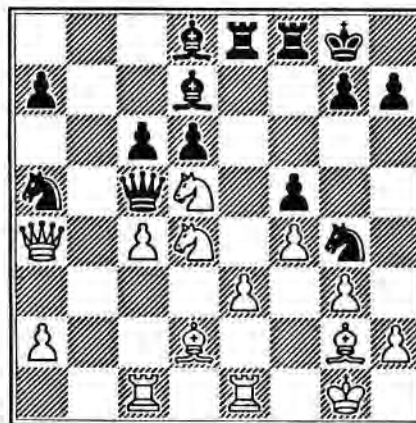
11 ♜c1 ♖d7
12 ♖ge2 ♜ae8
13 0-0 ♖d8
14 f4 exd4?

Black wants to attack the pawn on e3 but the white Knights become too active. More circumspect is 14 ... e4.

15 ♖xd4 ♖g4
16 ♜fe1 ♜b6?

Provoking tactics which turn out in White's favour.

17 bxc6 bxc6
18 ♖d5! ♜c5!



Clearly the Knight could not be captured, but Black's idea is that the queen-trap 19 ♖b4 is met by 19 ... cxd5 counter-attacking the white Queen. Continuing 20 ♜xd7 ♜xb4 21 ♖xd5+ ♖h8 22 ♖xf5 ♜b2! 23 ♜c2! ♜f6 24 ♖xd6 ♜e7 25 ♜xg4 ♜xd6 gives a position which I evaluate as about level. The three centre pawns look good value for the Knight but it is not easy to advance them effectively, for example 26 e4 ♖b6+ 27 ♖g2 ♖c6 28 e5? ♜b4 and Black is doing well.

However, White has a way to make ♖b4 a real threat.

19 ♖xf5!! ♜f7

19 ... ♜xf5 is inadvisable in view of 20 ♖b4 cxd5 21 ♜xd7 ♜xb4 22 ♜xc8+ ♜f8 23 ♖xd5+ ♖h8 24 ♜xf8 mate, but 19 ... ♖xf5 is worthy of consideration. Then 20 ♖b4 cxd5 21 ♖xc5 dxc5 22 ♖xd5+ leads to a material balance of Q+2P v B+2N. Due to the "offside" Knight on a5, White is clearly better, but Black's position is not totally without hope.

20 ♖b4! cxd5
21 ♖xc5 ♖xa4
22 ♖xd6 ♖e7

If 22 ... ♜c7 23 ♖xd5+, the black King has no safe square.

23 ♖xd5 ♖xd6
24 ♖xd6 ♖xc3
25 ♖xf7+ ♖xf7
26 ♖c5

Forcing further simplification. The two Knights will be no match for the rook and pawns in the ending.

26 ♖c2
 27 ♖xe8 ♗xc8
 28 ♖b1 a6
 29 ♖b6 ♖xc4
 30 ♖xa6 ♗d7
 31 ♖a8+ ♗f7
 32 ♖a7 ♗e8

Or 32 ... ♗c6 33 f5+ ♗d5 34 ♖xd7+ ♗xc5 35 ♖xg7 winning.

33 a4 ♖b2
 34 a5 ♖d3
 35 ♖a8+

White has to exercise some care. An embarrassing finish would be 36 ♗d6? ♖d4 37 ♖a8+ ♗f7 38 a6?? ♗h3! when the white King is in a mating net!

35 ♗f7
 36 a6!

The most direct route to victory. The a-pawn will cost Black two of his minor pieces.

36 ♖xc5
 37 a7 ♖d4

Alternatives are no better. For example, 37 ... ♖a4 38 ♖f8+ ♗xf8 39 a8=♖+ and 40 ♖e4 winning the knight on c2.

38 ♖d8 ♗c6

Or 38 ... ♖f3+ 39 ♗f2 ♗c6 40 ♖c8 and White wins.

39 ♖xd4 ♗e7
 40 ♖b4 ♖e6
 41 ♖c4 ♗d5
 42 ♖c8 ♖d4
 43 a8=♖ ♗xa8
 44 ♖xa8 Resigns
 1 0

Δ Δ Δ Δ Δ

We end this time with a sparkling miniature played recently by our Assistant International Secretary, Colin Macgregor. (Annotations by Colin)

WT/III/888
 White: C.A. Macgregor (SCO)
 Black: Kurt Dreher (GER)

Two Knights C55

1 e4 e5
 2 ♖f3 ♖c6
 3 ♗c4 ♖f6
 4 d3 h6

Protecting against ♗g5, at the cost of falling behind with development.

5 0-0 d5

Black chooses to try to open the game up (the point, perhaps, of Black's 4th move).

6 exd5 ♖xd5
 7 ♖e1 f6?

This move creates weaknesses on the white squares round Black's King that eventually prove to be fatal. Better was ♗e6.

8 ♖c3

The point of this was to remove Black's Knight from d5 and clear the a2-g8 diagonal for my Bishop. The Black reply to this move would allow me to bring my other Bishop to b2 or a3 - both are excellent diagonals for this Bishop.

8 ♖xc3?
 9 bxc3 g5?

Surely premature with Black so undeveloped.

10 d4 ♗g7
 11 ♖xe5!

Black is now in a dreadful position. White is threatening ♖h5+, with the possibility of 12 ... ♗e7 13 ♖f7, winning the Bishop on g7. White is also threatening to develop his Bishop on c1 to a3, and bring his Queen's Rook to d1.

11 fxe5
 12 ♖h5+ Resigns

Black cannot possibly defend against the many threats that White has, particularly 12 ... ♗e7 13 ♗a3+ ♗d7 14 ♖f7+ ♖e7 15 ♗e6+ ♗c6 and White has a very strong position.

[In this line, after 12 ... ♗e7, the continuation 13 ♖f7+ ♗d6 14 ♗a3+ is stronger! Comparatively better for Black is 12 ... ♗d7 but 13 dxe5 threatens both 14 ♖d1+ and 14 e6+ winning easily - Games Editor]

Reader's Letter

Fourth Edition of Rules Brochure

"The latest edition of the Rules will be welcomed by all CC players, especially Controllers who have to settle the occasional dispute. The new edition is nicely set out, easy to read and I am sure the thanks to Alan Hind, Richard Beecham and Moira Borwell, in such an onerous task, will be applauded by all players in Sco CCA.

Glancing through the latest Rules, I notice that some of the amendments made by the Executive have not been included in the latest Rules.

I refer to Mag No. 29 December 1988 Page 1 (3). This is to do with tournaments where two games are being played on the one card and a dispute arises in one of the games. Does this amendment still apply?

I also refer to Mag No 32 December 1989 Page 2 (2). This is to do with time control in games played at 20 days/10 moves and says that subsequent controls, after the first 10 moves, are applied every 10 moves afterwards. The new Rules state a time check for each subsequent 5 moves, and seems to apply to all Minor tournaments, including the League.

It may be that these amendments have been dropped but I feel clarification is required since the new Rules Brochure took account of changes made."

(Allan Hislop)

(Our Secretary's response will be published in the next edition - Editor)

ICCF THEMATIC TOURNAMENTS

Sections of 5-7 players, two games against each opponent. Top two players qualify for each Final.

Entries by 1/9/93

Start on 1/11/93

TO/4/93: Van Geet Opening:

1 ♖c3 d5 2 e4 d4 3 ♗ce2

TI/4/93: King's Indian Defence:

1 d4 ♗f6 2 c4 g6 3 ♗c3 ♗g7 4 e4 d6 5 ♗ge2 c6

TWW/4/93: Queen's Gambit Accepted:

1 d4 d5 2 c4 dxc4 3 e4 ♗f6 4 e5 ♗d5 5 ♗xc4 ♗b6.

TI/5/93: French Defence:

1 e4 e6 2 d4 d5 3 ♗c3 ♗b4 4 e5 c5 5 a3 ♗c3 6 bxc3 ♗e7 7 ♗f3 b6 8 ♗b5 ♗d7 9 ♗d3 ♗a4
Δ Δ Δ

Entries by 1/12/93

Start on 1/2/94

TO/1/94: Elephant:

1 e4 e5 2 ♗f3 d5 3 exd5 ♗d6
4 ♗c3 ♗f6 5 ♗e2

TI/1/94: Sicilian Defence (Dragon):

1 e4 c5 2 ♗f3 d6 3 d4 cxd4 4 ♗xd4 ♗f6 5 ♗c3 g6 6 f3 ♗g7 7 ♗e3 ♗c6 8 ♗d2 ♗d7 9 ♗c4 ♗c8
10 ♗b3 ♗e5 11 0-0-0 ♗c4
12 ♗xc4 ♗xc4 13 ♗b3 ♗c7

TG/1/94: Wolga/Benkő Gambit:

1 d4 ♗f6 2 c4 c5 3 d5 b5 4 cxb5 a6 5 b6 d6 6 d4

TG/2/94: Evan's Gambit:

1 e4 e5 2 ♗f3 ♗c6 3 ♗c4 ♗c5
4 b4 ♗xb4 5 c3

Entry fee is £4 per group (payable to Scottish CCA) to:

Mr. George D. Pyrich, 53 Dunnikier Road, Kirkcaldy, Fife, KY1 2RL.

ICCF INDIVIDUAL TOURNAMENTS

Members of the Scottish Correspondence Chess Association are eligible to compete in ICCF promotion tournaments, which are structured to encourage participation by C.C. players of all standards. You can choose between World or European-only sections ranging upwards from Third Class, Second Class to First Class. Higher Class and Master Class events require evidence of C.C. playing strength with entries.

Tournaments are organised in 7 or 15 player sections, except World III Class which is 7-player only. Normally they begin as soon as entries have been received from seven different countries, although sometimes there are two players from the same country. After you have selected a Class, you need to win a Section to be promoted.

The entry fee of £4 (for 7-player groups) or £5 (for 15-player groups) should be made payable to Scottish CCA and sent to Mr. George D. Pyrich, 53 Dunnikier Road, Kirkcaldy, Fife, KY1 2RL.

Please send games (preferably annotated to Games Editor:

George Pyrich,
53 Dunnikier Road,
Kirkcaldy,
Fife, KY1 2RL.

ICCF INDIVIDUAL TOURNAMENTS

Detailed below are earlier entrants from 1992 who have now been allocated to sections and commenced play (Nos. 36, 39 and 41). Also listed are new entries received since 1/1/93.

No	Name	Tournament Class/Players	ICCF Tournery Ref
36	RF Turner	World 1st 15	WT/1/GT/35
39	AC MacMillen	World 1st 7	WT/1/1339
41	A Armstrong	World 1st 7	WT/1/1340
1	A Armstrong	World 1st 7	WT/1/1346
2	GM Anderson	World 1st 7	WT/1/1343
3	T Thomson	World Master 15	WT/M//GT/323
4	AN MacMillen	European 1st 15	EU/1/GT/311
5	CR Beecham	European Master 15	EU/M/GT/372
6	JB Henderson	World Master 7	WT/M/615
7	W Harper	World 2nd 7	
8	W Harper	European 2nd 7	
9	WH Cormack	World 3rd 7	
10	I Marshall	Euro Higher 7	EU/H/1151
11	J Murray	World 3rd 7	
12	GE Wallwork	World Master 15	
13	GE Wallwork	Thematic 7	TO/4/93
14	I Marshall	World Higher 7	

Name	Tournament Class	Final Place	Score
F Ross	WT/111/797	5	3/6
P McGuire	WT/111/836	6	1½/6
A Nisbet	WT/1/GT/14	8	7½/14
PA McLeod	WT/111/840	5	2½/6

Fernschach International

This monthly magazine, published in Germany but also with games, articles and information in English, contains results for all ICCF tournaments. It can be obtained at preferential rates from Qualitext Business Services (see inside back cover)

WORLD CHAMPIONSHIP XIV 3/4 FINAL

Section 3			01	02	03	04	05	06	07	08	09	10	11	12	13	14	15	16
1	V H ANTON	URS	2616	GN														
2	B H BRYSON	SCO	2565	GN														
3	V B RUKHLIN	URS	2476	-														
4	J E STEINSAPIR	URS	2516	-														
5	A P BODISKO	URS	2430	-														
6	B V PEDERSEN	DEN	2650	IN														
7	C A BLANCO	BTN	2440	-														
8	J BARRIGA	ESP	2665	IN														
9	V V SADOVYJ	URS	2330	-														
10	L V CHEPURNOJ	URS	2476	-														
11	J SOMRI	FIN	2510	GN														
12	H LECROQ	FRA	2690	IN														
13	H H SHER	URS	2500	IN														
14	B C v PERLO	MLD	2510	GN														
15	V A ANTONOV	URS	2530	-														



CORRESPONDENCE CHESS YEARBOOKS & OPENINGS MONOGRAPHS

published by S1 Editrice,
Via Marsala 45,
40126 Bologna,
Italy.

S1 EDITRICE

The eighth edition of the Correspondence Chess Yearbook (CCYB) has been published very recently and contains 375 postal games from around the World, which are classified using the Informator opening codes. There are contributions from John Hawkes, who used to be Scottish CCA Magazine Games Editor, including an article "In Memoriam of V.I. Mikenas," the famous Estonian chess player who died last year.

There is an interesting theoretical article on the Filipenko Variation in the Alapin System of the Sicilian (B22) which begins with the move 1 e4 c5 2 c3 e5!7 and a Chess Theory supplement covering the Tarrasch (Schara Henning Gambit) and the Sicilian (Polugaevsky Variation).

In addition to their thrice-yearly Yearbooks, CCYB also publish some excellent booklets in their "Monographs" series. Although these are produced in Italy, the introductions are in English with figurine notation and Informator-style analysis. Currently there are five available, covering Queen's Gambit (Keres Defence), Ruy Lopez (Birds), Sicilian (Najdorf), Caro Kann (4 ... ♘f6) which have around 100 pages, and a more substantial one on the King's Indian (Sämisch) which has 225 pages. New titles will cover the Benoni (Taimanov - A67), the Göring Gambit, the English (1 c4 e5 2 ♘c3 ♗b4), the Caro-Kann Advance (B12), the Sicilian Najdorf (B98-B99) and Semi-Slav (Botvinnik D33-D44).

All of these excellent publications are available to SCCA members and Magazine subscribers on preferential terms from Qualitext Business Services (see inside back cover)

GRANDMASTER VIDEO MAGAZINE

The recent innovation of using video presentations has quickly become established, with each Grandmaster Video Magazine running 2-3 hours and costing £19.95. Featured in No. 8 is the Short-Timman match and the story of Bobby Fischer's comeback against Boris Spassky in Sveti Stefan and Belgrade - very interesting!

The quality and presentation are excellent and the videos are both instructional and entertaining. The next edition is planned to cover the Kasparov v Short match, due to be played in London in September/October 1993, and is expected to be available soon after its conclusion. Available from:

♦ Grandmaster Video, PO Box 50, Woking, Surrey GU22 7YT (Tel. 0276-855418)

WORLD CHAMPIONSHIP XVIII SEMI-FINAL

Section 8			01	02	03	04	05	06	07	08	09	10	11	12	13	14	15
1	D NILSSON	(SVE)	2045														
2	T RESDY	(NOR)	2300														
3	D A KILGOUR	(SCO)	2416														
4	C TEICHMANN	(CSR)	2370														
5	A A SVEREV	(URS)	2455														
6	L T TOLONEN	(URS)	2485														
7	D L HANSEN	(DEN)	2280														
8	V P SIROTKIN	(URS)	2500														
9	H PEREIRA	(POR)	(2200)														
10	B LOEFFLER	(BRD)	2385														
11	K GRAESER	(BRD)	(2200)														
12	E OSBUN	(USA)	2475														
13	A KOBAYASHI	(JAP)	2390														
14	A J BANBIEV	(URS)	2445														
15	B P DONNELLY	(BAH)	2335														

WORLD CHAMPIONSHIP XIX SEMI-FINAL

Section 2			01	02	03	04	05	06	07	08	09	10	11	12	13	14	15
1	P HERTEL	(GER)	2550														
2	A P BORVELL	(SCO)	2320														
3	J KRISTINSSON	(ISD)	2435														
4	J GARCIA-GUT	(ESP)	2300														
5	F TEARS	(USA)	2380														
6	V NIEMINEN	(FIN)	2375														
7	I MÜLLNER	(HRN)	2556														
8	V V YARKOV	(RUS)	(2200)														
9	JV ALINGH PRINS	(MLD)	2295														
10	B SZEWCZYK	(POL)	2405														
11	M KERN	(GER)	2485														
12	C A McNAB	(SCO)	(2425)														
13	H BROCKBANK	(ENG)	(2200)														
14	A V WOJNA	(RUS)	(2200)														
15	B J BENDAMA	(NIC)	2340														

FERNSCHACH INTERNATIONAL

Fernschach

This specialist CC magazine is published in Germany and is the main outlet for the publication of all results and information concerning ICCF tournaments and activities. Efforts have been made recently to include more annotated games using English, although the Games Editor, Herman Heemsoth GM, is always looking for more contributions from outside Germany. Fernschach is published monthly (11 issues with one double issue) each of 64 pages.

This magazine is an essential for all competitive correspondence chess players playing in ICCF events and contains much useful information to further the enjoyment of postal chess generally.

Correspondence Chess Informators

These are new publications which are compiled by Caissa Ltd in the Ukraine and printed by Fernschach International in Germany. The first edition contained 476 well-analysed postal games, many of which had not been published elsewhere. The events covered range from the CC games of Alekhine to the last two USSR CC Team Championships to be completed. There are also special Openings articles on the English Opening, Scandinavian (Centre Counter), Sicilian (Najdorf 6 ♗e3), Sicilian (4 ... e5) and Ruy Lopez (4 ♗xc6).

The notation is figurine, with good diagrams and clear presentation with game moves underlined and annotations using coding. The second edition is now expected and Correspondence Chess Informator is recommended as a source of useful and original material for CC players.

Scottish CCA members and magazine subscribers can now obtain Fernschach and the new Correspondence Chess Informators at very preferential rates from Qualitext Business Services (see inside back cover).

WHY NOT TRY INTERNATIONAL POSTAL CHESS?

You could start with a couple of games in friendly international matches. Just let Colin Macgregor know and he will arrange!

❖ Mr. C.A. Macgregor, Top Flat Left, 9 Argyle Street, Paisley, PA1 2ET

☎ 041-887-6619

30th ANNIVERSARY TOURNAMENTS OF FINLAND'S CC MAGAZINE

No	FINJUB-30/GM1		1	2	3	4	5	6	7	8	9	10	11	12	13	14	15	Pts
1	A VIAUD (FRA) 2370	♠	0				1/2	1	1/2	1/2	0					0		
2	H OLAFSSON (ISD) 2525	♠	♠		1						1							
3	GJ TIMMERMAN (NLD) 2615			♠	1					1		1				1		
4	E HINTIKKA (FIN) 2400		0	0	♠	1/2					1					1/2	0	
5	H RITTNER (GER) 2590	1/2			1/2	♠					1/2			1/2				
6	E EICHORN (SWZ) 2420	0					♠	1/2	1/2							1/2		
7	KB McALPINE (SCO) 2555	1/2						1/2	♠	1/2				1/2	1/2		1	
8	P PALMO (FIN) 2500	1/2		0	1	1/2	1/2	1/2	♠	0					1/2	1/2	1/2	1/2
9	M PIUVA (FIN) 2470	1	0							1	♠			1/2	1			
10	G ROTARIU (ROM) 2425			0								♠						0
11	JS MORGADO (ARG) 2500						1/2			1/2				♠	1/2		1/2	
12	P SLAVTSCHEV (BLG) 2565								1/2	1/2	0			1/2	♠			
13	R KIVIAHO (CAN) 2575									1/2						♠	1	
14	JJ CARLETON (ENG) 2475	1		0	1/2			1/2	0	1/2				1/2		0	♠	
15	J FRANZEN (CSR) 2585				1					1/2		1						♠

No	FINJUB-30/GM2		1	2	3	4	5	6	7	8	9	10	11	12	13	14	15	Pts
1	V SAGOROVSKI (RUS) 2590																1/2	
2	R MALLEE (GER) 2500		♠						1/2		1/2	0	1/2					
3	A LANC (CSR) 2580			♠		0	1						1/2	0				1
4	S RÄTY (FIN) 2440				♠					0								
5	C MELEGHEGYI (HUN) 2600			1		♠		1	1	1/2	1				1/2		1	
6	KB RICHARDSON (ENG) 2495			0			♠							0		1/2	1	
7	G ZECHA (GER) 2535	1/2				0		♠				1/2						
8	M BREAZU (ROM) 2495				1	0			♠			1/2						1
9	GJ BALLON (NLD) 2480		1/2			1/2					♠	1/2						1/2
10	G SANTORO (ITA) 2305		1		1/2	0		1/2	1/2	1/2	♠							
11	A KUJALA (FIN) 2600		1/2		1			1						♠				
12	J DeMAURO (USA) 2610														♠			1
13	RA REDOLFI (ARG) 2460						1/2									♠		
14	SJ HENRI (AUS) 2390	1/2						1/2									♠	
15	A JENSEN (DEN) 2440			0		0	0		0	1/2				0				♠

No	FINJUB-30/IM		1	2	3	4	5	6	7	8	9	10	11	12	13	14	15	Pts
1	B MARTIN (SCO) 2345	♠			0						0	0					1/2	0
2	T KOKKILA (FIN) 2200		♠	1/2							1							1/2
3	P KAUPPALA (GER) 2235	1	1/2	♠					1/2	0						1		
4	K TANNI (FIN) 2455				♠			1/2		1/2								
5	J SPODNY (CSR) 2440					♠						1/2				1/2	1/2	
6	C WERNER (GER) 2430				1/2		♠								1/2	1/2		
7	D DEMPSTER (AUS) 2265			1/2				♠				0			0			0
8	J KIVIMÄKI (FIN) 2200				1	1/2				♠	1/2			1/2				
9	O KOSKIVIRTA (FIN) 2200	1	0							1/2	♠							0
10	H GLASER (SIN) 2440	1			1/2	1/2		1				♠			1/2	1/2	1/2	
11	JL GALARDY (CUB) 2400													♠				
12	G KUBACH (USA) 2480				0					1/2					♠	1/2	1/2	
13	K EMBREY (USA) 2455					1/2	1/2	1				1/2		1/2	♠			1/2
14	V MALCOCCI (GER) 2445	1/2		0		1/2	1/2					1/2				♠	0	
15	O KROLL (DEN) 2415	1	1/2					1		1	1/2		1/2			1		♠

FRIENDLY INTERNATIONALS

by Colin Macgregor

All matches started recently have been progressing well. Three matches have been started so far this season, against the BCCA, Estonia and France. I have been finding it difficult to arrange a fourth match for this season, but hope to have good news soon. The best team performance so far by a Scottish team is in the match against Iceland, where we lead a very strong Icelandic team by 9-6. The main object of these games, however, is to have enjoyable games against overseas players, who you wouldn't normally have the opportunity of playing.

If people have games that they consider worthy of publication, please send them to George Pyrich, our Games Editor and International Secretary.

Scotland (10) v Algeria (4)

2 A Hind 2 0 N Hannoun
12 S. Baczowski 2 0 M Djelili

Scotland (9) v Iceland (6)

4 GA Morton 2 0 G Gislason
5 KWC Stewart ½ ½ A Karlsson
8 E Thompson 0 1 T Ingvarsson
10 AWI Campbell 0 1 J Johannesson
15 A Armstrong ½ 1 ½ H Ingolfsson

Scotland (0) v Latvia (1)

6 A Armstrong 0 1 G Rudzitis

Scotland (6) v Luxembourg (8)

3 GWG Lovie 0 1 J-P Goerens
5 AG Stalker 1 0 R Ludewig
12 DR Cumming 0 2 M Doha

Scotland (17) v New Zealand (5)

3 AT Hislop 10 01 C Mold
7 A Hind 2 0 G Lovelock
9 AD Kilgariff ½ ½ S Cameron
12 NR McEwan 2 0 A Winship
19 DG McRoberts 2 0 L Purvis

Scotland (9½) v Poland (18½)

8 A McMonigle ¾ ¾ J Szklarcszyk
10 A Kilgariff 00 11 A Cyrus
14 C McKay 0 2 S Górkiewicz
20 JPE Jack ½ ½ S Turlej
23 T McMorran 0 2 T Brus
30 CA Macgregor 1 0 Dr. A. Wasiluk

Scotland (9½) v Portugal (10½)

1 AP Borwell ½ ½ F Cleto
4 G Morton 2 0 R Nunes
5 J Watson 2 0 E Louro
8 E Thompson 10 01 L Oliviera
9 AWI Campbell ½ 1 ½ José Peres
10 DJ Savage 0 ½ 1 ½ João Peres
18 D Fleming 0 2 Antonio Rodrigues

International Friendly Matches

Members who are interested in playing in these enjoyable matches should contact Colin Macgregor, Top Flat Left, 9 Argyle Street, Paisley, PA1 2ET.

A new match is to begin against Canada in the Early Autumn and Colin is looking for a few more players to complete the team - so please contact him quickly!!

QUARTETS/HANDICAP

Entries can be made at any time to Alan Hind. New pairings will be arranged when there are sufficient new players to do so.

	SCOTLAND	BCCA
1	GD Pyrich	AM Stewart
2	I Marshall	LD Ackerley
3	J Henderson	AR Walters
4	T Thomson	AN Morris
5	W Rutherford	DB Arrington
6	KWC Stewart	RN Dixon
7	I Sneddon	A Byrne
8	Mrs E Hartford	AW Hooper
9	AWI Campbell	R Scruton
10	IA Mackintosh	DK Toye
11	DJ Savage	Rev JK Russon
12	S Hilton	DW Whymark
13	A Armstrong	VW Griffiths
14	NR McEwan	DR MB Green
15	AN MacMillen	CJ Soltysiak
16	J McMenemy	GM Richards
17	B Milligan	EP Connelly
18	G McKnight	R Barnes

	SCOTLAND	FRANCE
1	GD Pyrich	P Andrieu
2	I Marshall	R Roelens
3	J Henderson	JF Baudouin
4	T Thomson	C Bernard
5	W Rutherford	JM Dijon
6	KWC Stewart	D Bouchez
7	I Sneddon	G Beck
8	Mrs E Hartford	JP Guillaume
9	AWI Campbell	P Becquerelle
10	IA Mackintosh	H Vinagre
11	DJ Savage	F Alozy
12	Rev AC Norris	M Vandervoort
13	A Armstrong	F Fournier
14	NR McEwan	A Audie
15	AN MacMillen	M Aymard
16	J McMenemy	C Husser
17	B Milligan	L Leclerc
18	G McKnight	D Aubron
19	DB McGarva	S Parey

	SCOTLAND	ESTONIA
1	GD Pyrich	T Oim
2	IA Marks	A Hermlin
3	J Henderson	H Tomson
4	W Rutherford	E Liebert
5	Mrs E Hartford	Mrs M Rõtova
6	A Armstrong	L Vahesaar
7	S Hilton	V Tammemägi
8	NR McEwan	H Ploompuu
9	AN MacMillen	V Arvik
10	B Milligan	A Kangur

	AUSTRALIA		SCOTLAND
1	V PEDERSEN	¼ 1½	G D PYRICH
2		void	
3	G SHIMELEFF	0 2	T J CRAIG
4	G LAMBERT	½ 1½	R INGLIS
5	G BULLOCK	1 1	J SEYFRIED
6	J J MACKIE	1 1	A T HISLOP
7	J KUIPER	1½ ½	KWC STEWART
8	G PIKES	1 1	I MARSHALL
9	C MCKENZIE	2 0	RJP KYNOCH
10	A T SIMS	2 0	I MACKINTOSH
11	M BRUERE	0 2	M McLEOD
12	J RAMSDEN	0 2	JCT McNAB
13	G ERCILIDES	1½ ½	AD PENMAN
		void	
15	T PASSLOW	2 0	DL GILLESPIE
16	C GLANVILLE	0 2	Mrs M INGLIS
17	P JONOVIC	0 2	IWS MITCHELL
18	D ROEBUCK	0 0	DO PARSONS
19	AT HOLLOWAY	2 0	J STALLARD
20	H LARSEN	0 2	I SNEDDON
21	GR KELLY	2 0	BW GRANT
22	PJ HUGHIES	0 2	E THOMPSON
23	M SILLING	0 0	DV GIBBS
24	JD SMITH	0 2	B GOODWIN
25	A HOPP	2 0	F R RODD
		19 23	

Please send games (preferably annotated) to Games Editor:
George Pyrich,
53 Dunnikier Road,
Kirkcaldy,
Fife, KY1 2RL.

IV EUROPEAN TEAM CHAMPIONSHIP PRELIMINARIES

BOARD 1 - A J NUIR

	De	Bu	Sc	Po	Sw	CS	Sp	Ir	Au	
Den Sorensen, B 2575	●	1	0	1	0	1	1/2	1/2	1/2	4 1/2
Bul Kostadinov, K 2445	0	●	0	1/2	0	0	0	0	0	
SCO Nuir, A J (2225) F	1	1	●	1	1/2	1/2	1	1	1	7 km
Por Ferreira/Almeida (2300) F	0	1/2	0	●	1	1	1/2	0	1	4 1/2
Swe Carlsson, I 2455	1	1	1/2	0	●	1/2	1	1/2	1/2	
CS Bulla, Dr J 2435	0	1	1/2	0	1/2	●	1/2	1/2	1/2	
Spa Lanz Calavia, J N 2355 N	1/2	0	0	1/2	0	0	●	0	1/2	
Ire Ludgate, A T 2465	1/2	1	0	1	1/2	1/2	1	●	1/2	5
Aus Fleischhanderl, F 2470	1/2	1	0	0	1/2	1/2	1/2	1/2	●	3 1/2

BOARD 4 - D M JENKINS

	De	Bu	Sc	Po	Sw	CS	Sp	Ir	Au	
Den Sorensen, T 2450	●	1	1/2	1	1/2	1	1	1	1/2	
Bul Sergiew, B 2310	0	●	0	1/2	1/2	1/2	1	1	1	
SCO Jenkins, D M 2385	1/2	1	●	1/2	0	0	0	1	0	3
Por Castro, F A P B 2200	0	1/2	1/2	●	0	1	1/2	0	0	2 1/2
Swe Enterfeldt, L 2385	1/2	1/2	1	1	●	1/2	1	1/2	1	6
CS Machala, Dr R 2395	0	1/2	1	0	1/2	●	0	0	1	3
Spa Paredes Prats, J 2370	1	1	1/2	0	1	●	1/2	1/2	1/2	
Ire O'Siochru/Griffin 2200	0	0	0	1	1/2	1	1/2	●	0	3
Aus Hipfl, V/Schwab, R. 2350	1/2	0	1	1	0	0	1/2	1	●	4

BOARD 2 - A P BORWELL

	De	Bu	Sc	Po	Sw	CS	Sp	Ir	Au	
Den Christensen, B 2555	●	1/2	1/2	1/2	0	1/2	0	0	1/2	2 1/2
Bul Matchkarov, V 2200	1/2	●	1/2	1/2	0	1/2	1/2	1	1	4
SCO Borwell, A P 2280	1/2	1/2	●	1	0	1	1	1/2	0	4 1/2
Por Costa, F V L B 2200	1/2	1/2	0	●	0	1/2	0	1/2	0	2
Swe Lundholm, Dr B G 2450 N	1	1	1	1	●	1	1	1	1/2	7 1/2 km
CS Krecmer, Ing M 2440	1/2	1/2	0	1/2	0	●	1	1/2	0	3
Spa Garriga Nualart, J 2570 N	1	1/2	0	1	0	0	●	0	0	2 1/2
Ire Harding, T D 2270	1	1/2	1/2	1/2	0	1/2	1	●	1/2	4 1/2
Aus Teichmeister, Dr B 2395	1/2	0	1	1	1/2	1	1	1/2	●	5 1/2 km

BOARD 5 - G D PYRICH

	De	Bu	Sc	Po	Sw	CS	Sp	Ir	Au	
Den Jensen, IB V E 2440	●	1	1/2	1	1	1	1	1	1	7 1/2
Bul Kostakiev, D 2200	0	●	1	0	1	1/2	1	1	1/2	
SCO Pyrich, G D 2205	1/2	0	●	1/2	0	1	1	1/2	0	3 1/2
Por Cordiero, V L 2200	0	1	1/2	●	1	1	1	0	0	4 1/2
Swe Becker, J 2390	0	1	0	●	1	1	1	1/2	1/2	
CS Narecek, Ing M 2340	0	1/2	0	0	0	●	1	1	1/2	3
Spa Bonay Toscas, B 2375	0	0	0	0	0	0	●	1/2	1/2	
Ire Montgomery, R 2345	0	1/2	1	0	0	0	●	1/2	1/2	
Aus Venger, Dr K 2200	0	1/2	1	1	1/2	1/2	1/2	●	1/2	4 1/2

BOARD 3 - S R GILLAM

	De	Bu	Sc	Po	Sw	CS	Sp	Ir	Au	
Den Lassen, H J 2495	●	1/2	1/2	1/2	1/2	1	1	1	0	5
Bul Petrov, V (2270) F	1/2	●	1/2	0	1/2	1/2	1/2	1/2	1/2	3 1/2
SCO Gillam, S R 2395	1/2	1/2	●	0	0	1/2	1	1/2	0	3
Por Quaresma, L N T 2200	1/2	1	1	●	1/2	1/2	1	1	1	6 1/2
Swe Gustafsson, G 2405	1/2	1/2	1	1/2	●	1	1	1	1	
CS Kolin, J 2340	0	1/2	1/2	1/2	●	1	1/2	0	0	
Spa Padros Simon, A 2340	0	1/2	0	0	0	0	●	0	0	1/2
Ire Gibbon, J F 2395	0	1/2	1/2	0	0	1/2	1	●	0	2 1/2
Aus Aigwüller, Ing M 2360	1	1/2	1	0	0	1	1	1	●	5 1/2

BOARD 6 - T J CRAIG

	De	Bu	Sc	Po	Sw	CS	Sp	Ir	Au	
Den Velling, O 2430	●	1/2	1	1	0	0	1/2	1	1	5
Bul Parvanov, L 2300	1/2	●	1/2	1/2	0	0	1/2	1/2	1/2	3
SCO Craig, T J 2290	0	1/2	●	1	1/2	1	0	1	1/2	4 1/2
Por Palhares/Figueiras 2200	0	1/2	0	●	1	1/2	1/2	1/2	1	4
Swe Nilsson, J 2200	1	1	1/2	0	●	1	1	1	1	6 1/2
CS Novotny, Ing J 2415	1	1	0	1/2	0	●	1/2	1	1	5
Spa Ibanez Rico, P 2420	1/2	1/2	1	1/2	0	1/2	●	1	1	5
Ire Brady, L B 2265	0	1/2	0	1/2	0	0	0	●	1/2	1 1/2
Aus Koller, H 2200	0	1/2	1/2	0	0	0	0	1/2	●	1 1/2

continued

BOARD 7 D H DEMPSTER De Bu Sc Po Sv CS Sp Ir Au

Den Sogaard, O	2440	●	1/2	1	1	1	1/2	1/2	1	1/2	6
Bul Gentchev/Kossatchiev	2220	1/2	●			1	0	1	1	1/2	
SCO Dempster, D H	2135	0		●	0	1	1/2	0	1/2	0	
Por Demetrio, A H R	2200	0		1	●	1/2	1	1	1	1	
Swe Friberg, H	(2265)F	0	0	0	1/2	●	1	0	1	0	2 1/2
CS Rosenzweig, V	2365	1/2	1	1/2	0	0	●	1/2	1	0	3
Spa Montecatino Niss, R	2390	1/2	0	1	0	1	1/2	●	1	0	4
Ire Thomson, A	2200	0	0	1/2	0	0	0	●	1/2	1	
Aus Strauss, Prof A	2200	1/2	1/2	1	0		1	1	1/2	●	5 1/2

BOARD 8 - B J MARTIN De Bu Sc Po Sv CS Sp Ir Au

Den Berggreen, A J	2400 N	●	1/2	1/2	1	1/2		0	1	1/2	
Bul Minkov, I	2200	1/2	●	1	1	1/2		0	1		
SCO Martin, B.J.	2290	1/2	0	●	0	1	1/2	0	1	1/2	3 1/2
Por Flores/Figueiras	2200	0	0	1	●	0	1/2	0	1/2	1	3
Swe Brlandsson, C-E	2310	1/2	1/2	0	1	●		0			
CS Lisan, Ing L	2380			1/2	1/2		●		1	1/2	
Spa Bernal Casmano, J	2200	1	1	1	1	1		●	1	1	
Ire Killane, J/Thomson	2200	0	0	0	1/2		0	0	●	0	
Aus Steinwender, V	2200	1/2		1/2	0		1/2	0	1	●	

BOARD 9 - A J SHAW De Bu Sc Po Sv CS Sp Ir Au

Den Nielsen, N	2395	●	1	1	1/2	0	1	1/2	1	0	5
Bul Atanasov, B P	2425	0	●	1/2		1	1	1/2			
SCO Shaw, A J	2200	0	1/2	●	0	1/2	1/2	0	1	1/2	3
Por Moraes, V H	2200	1/2		1	●	1	1/2	1/2	1	1	
Swe Rydholm, L	2215	1	0	1/2	0	●	1	0	1	1/2	4
CS Stodola, J	2200	0	0	1/2	1/2	0	●		1	1	
Spa Casares Ripoll, F	2200	1/2	1/2	1	1/2	1		●	1	0	
Ire Gallacher, B	2200	0		0	0	0	0	●	0	0	
Aus Roth, P	2300	1		1/2	0	1/2	0	1	1	●	

BOARD 10 G W G, LIVIE De Bu Sc Po Sv CS Sp Ir Au

Den Petersen, B	2345	●	1/2	1/2	1/2	1	0	0	1	1/2	4
Bul Tschankov/Salimev	2200	1/2	●	0	0		0			0	
SCO Livie, G V G	2200	1/2	1	●	1	0		0	1	1/2	
Por Costa, L H C H	2200	1/2	1	0	●		1/2	0	1	1/2	
Swe Seger, G	2295	0		1		●	0	1/2		1	
CS Hadraba, Ing V	2420	1	1		1/2	1	●	0	1/2	1/2	
Spa Gude Fernandez, A	2420	1		1	1	1/2	1	●	1/2	0	
Ire Humphrys, F J	2200	0		0	0		1/2	1/2	●	1/2	
Aus Vadep, O	2260	1/2	1	1/2	1/2	0	1/2	1	1/2	●	4 1/2

BOARD 11 - J BEYFRIED De Bu Sc Po Sv CS Sp Ir Au

Den Kleininger, P	2200	●		1	1/2	0	1		1	1/2	
Bul Tenov, I	2200		●	0		1	0	1		0	
SCO Beyfried, J	2200	0	1	●	0		0	1	1	0	
Por Pinto, H H F B	2200	1/2		1	●	1		1	1	0	
Swe All, V	2400	1	0		1	●	0		1	0	
CS Necessary, Z	2320	0	1	1		1	●	1	1	0	
Spa Gil Matilla, C	2200		0	0	0		0	●	1	0	
Ire Shaw, J	2200	0		0	0	0	0	●	0	0	
Aus Tarnowiecky, Dr H	2340	1/2	1	1	1	1	1	1	1	●	7 1/2

BOARD 12 - G R SPROTT De Bu Sc Po Sv CS Sp Ir Au

Den Danstrup, H	2535	●	1	1/2	1	1		1	1	1/2	
Bul Mincev, V	(2230)F	0	●	0	1	1/2	1/2	1	1	1/2	4 1/2
SCO Sprott, G R	2200	1/2	1	●	1	0	0	1/2	1	1	5
Por Fonseca, A V V	2200	0	0	0	●	1/2	0	0	1	1/2	2
Swe Olsson, S	2200	0	1/2	1	1/2	●	1/2	1/2	0	1	4
CS Malac, M	2200		1/2	1	1	1/2	●	1	1	1/2	
Spa Guillen Marco, J	2200	0	0	1/2	1	1/2	0	●	1	0	3
Ire Shouldice, A	2200	0	0	0	0	1	0	0	●	1/2	2 1/2
Aus Urban, Prof F	2290	1/2	1/2	0	1/2	0	1/2	1	1/2	●	3 1/2

3rd NORTH ATLANTIC TEAM TOURNAMENT

BOARD 1			1	2	3	4	5	6	7	8	9	10	11	Pts
1	DM MacLeod	Can	*	½	0	1	½	½	0	½	1	1	½	5½
2	JM Masurel	Fra	½	*	0		1	½	0	1	1	½	½	
3	AJ Muir	SCO	1	1	*		1	½	½	1	½	1	½	
4	R Crusi	Spa	0			*	½		0	½	½	½	½	
5	K Dehmelt	USA	½	0	0	½	*	0	½	½	½	½	½	
6	MW Wills	Eng	½	½	½		1	*	½	½	1	½	½	
7	D Orseth	Nor	1	1	½	1	½	½	*	½	1	1	½	7½
8	AO Karason	Ice	½	0	0		½	½	½	*	1	½	½	
9	M Thomas	Wal	0	0	½	1	½	0	0	0	*	½	½	3
10	A Oliveira	Por	0	½	0	½	½	½	0	½	½	*	½	3½
11	AT Ludgate	Irl	½	½	½	½		½	½	½	½	½	*	

BOARD 2			1	2	3	4	5	6	7	8	9	10	11	Pts
1	Z Sarosy	Can	*	0	0	½	½	0	0		1	½	1	
2	S Vinot	Fra	1	*	½	1	½	½	½	½	1	1	1	7½
3	CA MacNab	SCO	1	½	*	1	1	0	½	0	1	½	1	6½
4	F Ivañez	Spa	½	0	0	*		½	0	0	1		½	
5	EE Liebowitz	USA	½	½	0		*	0	½	½	1		½	
6	T Thomas	Eng	1	½	1	½	1	*	0	½	1	1	1	7½
7	KW Strand	Nor	1	½	½	1	½	1	*	½	1	½	1	7½
8	B Thorbergsson	Ice		½	1	1	½	½	½	*	1	½	1	
9	M Williams	Wal	0	0	0	0	0	0	0	0	*	0	0	0
10	C Quaresma	Por	½	0	½		0	½	½	1	*	1		
11	TD Harding	Irl	0	0	0	½	½	0	0	0	1	0	*	2

BOARD 3			1	2	3	4	5	6	7	8	9	10	11	Pts
1	K Widmann	Can	*	1	1		1	1		1	1	1	1	
2	J de Lagontrie	Fra	0	*	½	0	½	0	½	1	1	1	½	5
3	PM Giulian	SCO	0	½	*		0	½	½	½	1	1	½	
4	JL Bernal	Spa	1			*	1	1	1	1	1	1	0	
5	E Osbun	USA	0	½	1	0	*	1	1	1	1	1	0	6½
6	AM Stewart	Eng	0	1	½	0	0	*	½	½	½	1	½	4½
7	T Strand	Nor		½	½	0	0	½	*	0	1	1		
8	G Halldorsson	Ice	0	0	½	0	0	½	1	*	1	1	0	
9	G Sinnett	Wal	0	0	0	0	0	½	0	0	*	1	0	1½
10	C Santos	Por	0	0	0	0	0	0	0	0	0	*	0	0
11	E Gibney	Irl	0	½	½	1	1	½		1	1	1	*	

BOARD 4			1	2	3	4	5	6	7	8	9	10	11	Pts
1	S Boyd	Can	*	1	½	½	0	1	0	½	½	½	1	5½
2	A Wallyn	Fra	0	*	0	1	½	½	½	1	1	1	½	6
3	DA Kilgour	SCO	½	1	*	1	1	½	0		½	1	1	
4	R Montecatine	Spa	½	0	0	*			½		1			
5	ES Martinovsky	USA	1	½	0		*	0	1		1			
6	PF Timson	Eng	0	½	½		1	*	0		1		1	
7	V Taksrud	Nor	1	½	1	½	0	1	*	0	1	0	1	6
8	G Gislason	Ice	½	0					1	*	½	½		
9	GH Phillips	Wal	½	0	½	0	0	0	0	½	*	0	½	2
10	F Cleto	Por	½	0	0					1	½	1	*	½
11	JF Gibson	Irl	0	½	0			0	0		½	½	*	

BOARD 5			1	2	3	4	5	6	7	8	9	10	11	Pts
1	J Armstrong	Can	*	1	1	1	½	½	½	½	½	1	1	7½
2	JL Maurel	Fra	0	*	1	1		0	½	0	1	1	1	
3	TJ Craig	SCO	0	0	*	1	1	0	½	½	½	1	½	5
4	A Gude	Spa	0	0	0	*	0	0	0	0	0	1	0	1
5	D Kopec	USA	½		0	1	*	1	½	0	1	1	1	
6	PJ Sowray	Eng	½	1	1	1	0	*	1	1	1	1	1	8½
7	E Iversland	Nor	½	½	½	1	½	0	*	0	½	1	0	4½
8	E Thorsteinsson	Ice	½	1	½	1	1	0	1	*	1	1	½	7½
9	MJ Griffiths	Wal	½	0	½	1	0	0	½	0	*	1	1	4½
10	F Mendes	Por	0	0	0	0	0	0	0	0	0	*	0	0
11	R Montgomery	Irl	0	0	½	1	0	0	1	½	0	1	*	4

BOARD 6			1	2	3	4	5	6	7	8	9	10	11	Pts
1	M Edelstein	Can	*	1	1	0	0	0		0	1	½	0	
2	P Danzanvilliers	Fra	0	*	0	0	0	0	0	0	1	0	1	2
3	GR Sprott	SCO	0	1	*	0	0	0	1	0	½	0	½	3
4	F Casares	Spa	1	1	1	*	½	½	0		0	½		
5	I Golyak	USA	1	1	1	½	*	½	½	½	1	½	½	7
6	M Read	Eng	1	1	1	½	½	*	1	1	1	1	1	9
7	H Theting	Nor		1	0	1	½	0	*	0	1	0	1	
8	A Karlsson	Ice	1	1	1		½	0	1	*	1	1	1	
9	D Guy	Wal	0	0	½	1	0	0	0	0	*	0	0	1½
10	J Gonçalves	Por	½	1	1	½	½	0	1	0	1	*	½	6
11	F Coll	Irl	1	0	½		½	0	0	0	1	½	*	

BOARD 7			1	2	3	4	5	6	7	8	9	10	11	Pts
1	L Neubauer	Can	*	1	½		1	1	1		½			
2	A Negre	Fra	0	*	½	½	½	½	½	½	½	0	½	4
3	GD Pyrich	Sco	½	½	*	½	1	½	0	1	0	½	½	5
4	M Suárez	Spa		½	½	*	1	½	0		1			
5	CA Haessler	USA	0	½	0	0	*	0	0	0	0	1	1	2½
6	DJR Barnes	Eng	0	½	½	½	1	*	0	1	1	½	1	6
7	T Johansen	Nor	0	½	1	1	1	1	*	1	1	½	1	8
8	B Magnusson	Ice		½	0		1	0	0	*	0	½	1	
9	CJ Grier	Wal	½	½	1	0	1	0	0	1	*	½	½	5
10	P Sampaio	Por		1	½		0	½	½	½	½	*	1	
11	J Killane	Irl		½	½	0	0	0	0	0	½	0	*	

BOARD 8			1	2	3	4	5	6	7	8	9	10	11	Pts
1	AB de Vriendt	Can	*	½	1		1	1	½		1			
2	VM Goasdoue	Fra	½	*	0	0	½	1	0	0	½	1	1	4½
3	GWG Livie	Sco	0	1	*	0	½	½	1	½	1	1	1	6½
4	P Garcia	Spa		1	1	*	1	1	½		½	1	1	
5	JP Voth	USA	0	½	½	0	*	0	0	0	0		½	
6	AJ Slinger/Morris	Eng	0	0	½	0	1	*	1	1	1	1	1	6½
7	ET Gullaksen	Nor	½	1	0	½	1	0	*	1	½	1	1	6½
8	G Hannesson	Ice		1	½		1	0	0	*	1	½	0	
9	K Scantlebury	Wal	0	½	0	½	1	0	½	0	*	0	½	3
10	J Bray	Por		0	0	0		0	0	½	1	*	½	
11	B Gallagher	Irl		0	0	0	½	0	0	1	½	½	*	

BOARD 9			1	2	3	4	5	6	7	8	9	10	11	Pts
1	J Pouliot	Can	*	0	½	1	0	1	0	½	1	1		
2	D Troffiguer	Fra	1	*	1	½	1	½	1	½	1	1	1	8½
3	IS Campbell	Sco	½	0	*	1	0	0	0	0	½	1	0	3
4	F Pérez	Spa	0	½	0	*	0		1	½	1	1	1	
5	LB Owen	USA	1	0	1	1	*	1	1	1	1	1	½	8½
6	PW Hempson	Eng	0	½	1		0	*	1	1	1	1	1	
7	M Klingen	Nor	1	0	1	0	0	0	*	½	1	1	1	5½
8	B Sigurjonsson	Ice	½	½	1	½	0	0	½	*	½	1	1	5½
9	J Whittaker	Wal	0	0	½	0	0	0	0	½	*	1	0	2
10	C Bajouco	Por	0	0	0	0	0	0	0	0	0	*	0	0
11	F Humphrys	Irl		0	1	0	½	0	0	0	1	1	*	

BOARD 10			1	2	3	4	5	6	7	8	9	10	11	Pts
1	H King	Can	*	0		½	0	½	0	½	0			
2	J Derouineau	Fra	1	*	0	1	½	0	0	½	1	0	1	5
3	JAB Stevenson	Sco		1	*			1	1		1		1	
4	C Gil	Spa	½	0		*	½	1	½	0	1		1	
5	RD Weiss	USA	1	½		½	*		½		½			
6	MW Wood	Eng	½	1	0	0		*	½		½	1	½	
7	A Larsen	Nor	1	1	0	½	½	½	*	0	1	½	½	5½
8	JA Halldorsson	Ice	½	½		1			1	*	1			
9	P Bowers	Wal	1	0	0	0	½	½	0	0	*	0	1	3
10	JJ Neves	Por		1				0	½		1	*		
11	I Cantwell	Irl		0	0	0		½	½		0		*	

3rd North Atlantic Team Tournament

Crosstables for this event appear above and the current totals for each team at 31st May 1993, as provided by Tournament Secretary, Carlos Flores (Spain), are as follows:

	Points Scored	Games Completed	%
1 England	62	93	66.7
2 Norway	59	97	60.8
3 Canada	50	84	59.5
4 Iceland	48½	82	59.2
5 Scotland	52	92	56.5
6 France	53	98	54.1
7 USA	45	86	52.3
8 Spain	38½	76	50.7
9 Ireland	30½	87	35.1
10 Portugal	26	85	30.6
11 Wales	25½	100	25.5

Total number of games per team = 100

"YOUR" ASSOCIATION

If you have any ideas or suggestions about improving or developing the Scottish CCA, we would be very pleased to hear from you. Just write to one of the Office Bearers (addresses on inside of front cover).

100 CLUB

This is a club for members who really would like to help with the development of the Scottish Correspondence Chess Association. Currently there are almost 80 units issued but we need to increase this to 100 - please help us!

The subscription is only £1 per month per unit, with two prizes each month currently approx £26 and £17 respectively - members may apply for more than one unit if they so wish!

A monthly bankers order form can be obtained from our Treasurer, Iain Campell, 32 Lomond Drive, Newton Mearns, Glasgow G77 6LR. If you return it to him before the 10th of the month, then you will be eligible to be in the draw for that month.

Recent winners:

January	AP Borwell AJ McClelland
February	AP Borwell MA Hind
March	MA Hind J Anderson
April	G McKnight AJ McClelland
May	DM Bryson GWG Livie

OVERSEAS SUBSCRIBERS

Subscription for one year's editions of the Scottish CCA Magazine can be obtained from the Editor for £8 p.a. (inclusive of postage)



Address Changes?

Members are asked to advise changes of address promptly to their opponents, the tournament secretary, the Scottish CCA Secretary and the Editor of the SCCA Magazine.

READ SCOTTISH CHESS

including
Games and Positions
annotated by
PAUL MOTWANI, G.M.
Endgame articles by
COLIN McNAB, G.M.
Test your Chess by
RODDY McKAY, I.M.
Feature articles by various authors

Q. How much does it cost?

A. £6 per annum or £1.50 per copy.

Q. How do I subscribe?

A. Send your name, address and fee to Chess Suppliers (Scotland) Ltd.

Please send games (preferably annotated to Games Editor:

George Pyrich,
53 Dunnikier Road,
Kirkcaldy,
Fife, KY1 2RL.

POSTAL CHESS SUPPLIES

This new service is for all postal chess players, with favourable terms available for Scottish CCA members and subscribers to the Scottish CCA Magazine.

The following items are currently available:

Stationery for Correspondence Chess	Prices	
	(incl postage)	(excl postage)
• Scottish CCA International Postcards (the best!) per 100 cards	£3.50	£3.00
• Scottish CCA Scorecards (2 games per card) per 25 cards	£1.75	£1.50
• Window Envelopes (for SCCA Scorecards) per 100 envelopes	£1.75	£1.50
• Correspondence Chess record sheets per 50 sheets	£3.00	£2.50
• Ring Binders (for containing CC record sheets)	£2.50 each	£2.00 each

Correspondence Chess Magazines/Booklets	Prices per annum	Price for single edition	Sample copy of earlier edition
• Scottish CCA Magazine (3 issues p.a.)	£ 6 p.a.*	£ 2.25	£ 1.25
• Fernschach International (11 editions p.a.)	£19 p.a.	£ 2	£ 1.50
• Correspondence Chess Informator (3 editions p.a.)	£33 p.a.	£12	£10
• Correspondence Chess YearBook (3 editions p.a.)	£33 p.a.	£12	£10
• CCYB Openings Monographs (100-125 pages)		£ 8	£ 6

(These prices include postage/delivery)

* £8 p.a. for overseas subscribers

Scottish CCA Members and Magazine Subscribers will be entitled to a special discount on items shown in this panel (except for the Scottish CCA Magazine).

Chess Books

Supplies of Batsford, Cadogan and other chess books, which have a particular relevance to postal chess players, are available from Qualitext Business Services. A selection of books published recently, which are considered to be useful for postal chess, are shown in the panel overleaf.

Scottish CCA Members and Magazine subscribers will be entitled to a special discount from Qualitext Business Services on orders placed.

Photocopying, facsimile and word processing (eg. reports, manuscripts; theses, C.V.s etc)
We offer the above services to "bona fide" chess contacts at preferential and very competitive prices. For example, we will supply photocopies at the rate of 7p (9p double-sided) and bulk copying (over 100 sheets) for 5p (7p) respectively, providing that SAEs are enclosed with orders (other rates on enquiry).

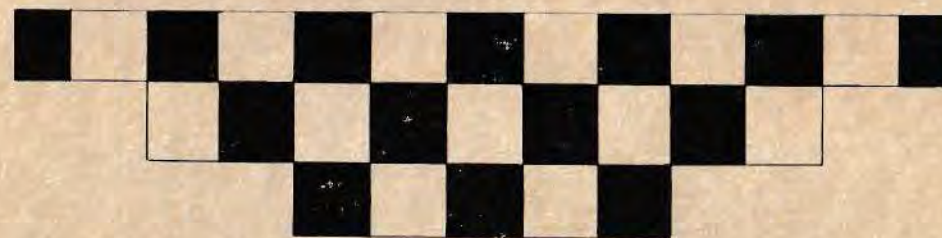
Enquiries, orders and cheques made payable to "Qualitext Business Services" (whose proprietors are Moira and Alan Borwell), to 8 Wheatfield Avenue, Inchtute, Perthshire, PH14 9RX, Scotland. We can be contacted by telephone from 3pm to 10pm daily on 0828-86556 (fax 0828-86004).

QUALITEXT BUSINESS SERVICES

We have selected the following books (all published in the last 2 years) as being of special relevance or interest to postal chess players :-

		Reviewed SCCA Magazine
Published by:		
Batsfords	Closed Spanish: Karpov/Zaitsev - <i>Anatoly Bikhovsky</i>	£ 9.99 43
	Complete Alekhine - <i>Graham Burgess</i>	£14.99 39
	Complete French - <i>Lev Psakhis</i>	£14.99 42
	Complete Queen's Indian - <i>Efim Geller</i>	£14.99 39
	Complete Spanish - <i>Alexei Suetin</i>	£12.99 39
	How to Play the King's Indian Attack - <i>Dunnington</i>	£10.99 42
	King's Indian for the Attacking Player - <i>Graham Burgess</i>	£12.99 43
	New Ideas in the Four Knights - <i>John Numm</i>	£10.99 42
	New Ideas in the French - <i>Nigel Short</i>	£ 8.99 37
	New Ideas in the Pirc Defence - <i>John Numm</i>	£10.99 43
	Tactics in the King's Indian - <i>Gemady Nesis</i>	£ 9.99 39
	Tactics in the Sicilian - <i>Gemady Nesis</i>	£12.99 42
	Winning with the Bishop's Opening - <i>Gary Lane</i>	£12.99 42
	Winning with the Closed Sicilian - <i>Gary Lane</i>	£12.99 41
	Winning with the English - <i>Ribli & Kallai</i>	£13.99 41
	Winning with the King's Gambit - <i>Joe Gallagher</i>	£13.99 42
	Winning with the Petrov - <i>Anatoly Karpov</i>	£10.99 42
	Winning with the Philidor - <i>Tony Kosten</i>	£10.99 40
	Winning with the Scandinavian - <i>Harman & Taulbut</i>	£12.99 43
	Winning with the Scotch - <i>Gary Lane</i>	£12.99 43
	Winning with the Sicilian - <i>Mark Taimanov</i>	£12.95 37
Cadogan	Accelerated Dragons - <i>Donaldson & Silman</i>	£12.99 43
	Blumenfeld Gambit - <i>Przewoznik & Pein</i>	£ 8.95 36
	Bobby Fischer: His Approach to Chess - <i>Elie Agur</i>	£12.95 42
	Creative Chess - <i>Amatzia Avni</i>	£ 7.95 36
	Michael Adams: Development of a GM - <i>Bill & Michael Adams</i>	£ 7.95 38
	Nimzo-Indian Defence - <i>Svetozar Gligoric</i>	£14.99 43
	Play Anti-Indian Systems - <i>Egon Varnusz</i>	£10.95 39
	Play the Benko Gambit - <i>Ravikumar</i>	£ 9.95 -
	Play the Caro-Kann - <i>Egon Varnusz</i>	£11.95 39
	Play the Queen's Gambit - <i>Drazen Marovic</i>	£14.95 38
	Sicilian Labyrinth Vol. 1 - <i>Lev Polugayevsky</i>	£12.50 36
	Sicilian Labyrinth Vol. 2 - <i>Lev Polugayevsky</i>	£12.50 36
Trends	These excellent booklets of selected recent games in specific openings cost between £3.50 and £4 each. A complete list is available of the 74 titles produced so far and will be provided on enquiry.	

These books can be obtained from Qualitext Business Services, as indicated on the previous page.



MAKE THE RIGHT MOVE



WE CAN HELP



General Accident

World Headquarters, Pitheavlis, Perth, Scotland PH2 0NH