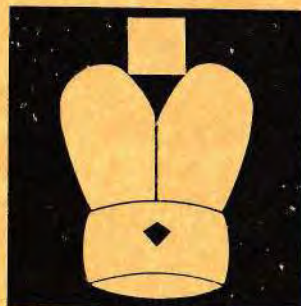


*Scottish
Correspondence
Chess*



JUNE/JULY 1996

No. 54 £2.50

SCOTTISH CORRESPONDENCE CHESS ASSOCIATION

Office-Bearers 1996-97

		Tel No
President	Alan P. Borwell	01828-686556
(Magazine Editor)	8 Wheatfield Avenue, Inchture, Perthshire PH14 9RX	Fax 01828-686004
Vice President	David A. Kilgour, "Willowbank", Peebles Road, Galashiels, TD1 1TH.	01896-755576
Secretary	Alan Hind 6 Gordon Drive, Netherlee, Glasgow G44 3TF	0141-637-4462
Treasurer	David A. Kilgour. "Willowbank", Peebles Road, Galashiels, TD1 1TH	01896-755576
Assistant Secretary	Iain Sneddon, 6 Birkscairn Pl., Bourtreeschill, Irvine, Ayrshire, KA11 1ED	01294-214035
International Secy (& Games Editor)	George D. Pyrich, 53 Dunnikier Road, Kirkcaldy, Fife, KY1 2RL	01592-204133 (Tel and Fax)
Asst International Secretary	C. Richard Beecham, 28 Morris Road, Prestwick, Ayrshire, KA9 2JW	01292-476984
Grading Officer	Raymond W.M. Baxter, 21 House o' Hill Road, Edinburgh EH4 2AJ	0131-332-4607
Publicity and and Membership Officer	Bernard Milligan 15 Bothwell Court, Hawick, Roxburghshire, TD9 7EP	01450-370507
Committee Member	Tom Thomson, 8 Swallow Crescent, Buckhaven, Fife, KY8 1HH.	01592-581354
Life Members	D G Anderson, G M Anderson, K D Anderson, C R Beecham, P G Bennett, Prof G H Bird, C Black, A P Borwell, C F Boyle, S Brady, D M Bryson, B W Chalmers, G G Chalmers, S. Collins, J Cox, T J Craig, D Crichton, D H Dempster, R Dickson, J Eadie, R Gibson, P M Giulian, Mrs. R.A. Giulian, A B Glass, J R Gracie, B W Grant, M A Hammett, Mrs E A Hartford, A T Hislop, W J Hutchison, R M Innes, J P E Jack, R Jackson, D M Jenkins, AD Kilgariff, D A Kilgour, D M Livie, G W G Livie, J P L Lumsden, K B McAlpine, J M MacArthur, A J McClelland, P McConnell, D McCracken, A McFadyen, Mrs. M McGhee, M E McGhee, C A Macgregor, D McKerracher, I A Mackintosh, T McMorrin, J N McNeill, D G McRoberts, J McTaggart, I A Marks, I Marshall, I W S Mitchell, R Mitchell, G A Morton, A J Muir, J S Murray, Dr V A Nye, A J Norris, T Paterson, A Pearcey, V A Proudler, D R Reid, W S Roach, T Russell, D J Savage, J Seyfried, G R Sprott, Dr K W C Stewart, M A Swystun, A Taylor, T A H Taylor, I Thompson, T Thomson, J M Walker, J Watson, W P Watson, T S Wickens, A Wilson.	

Magazine processed by using Word for Windows/ChessBase for Windows software.
Magazine printed by General Accident plc, Perth, Scotland.



Chess Playing Software Chess Databases Windows/Dos/MAC/CD New Releases



FRITZ 4 [CD-ROM only] NEW!!

- Upgrade from Fritz 3 £89.95
- 3D adjustable Virtual-Reality graphics £44.95
- Built in tutor advises during play
- Chit-chat while you play!
- Automatic analysis of multiple games
- Even stronger play from the '95 Computer World Champ
- Works inside ChessBase for Windows 1.1
- HIARCS 3.7 playing engine for Fritz 4 interface £44.95

FRITZ 3 [386+ and VGA]

- UPGRADE from Fritz 2 (return disk) £79.95
- At least 2350 Elo (but 2600+ at Blitz on a Pentium PC!), 219 BCF £42.50
- Outright world computer champion, smashing super-computer Deep Blue. Made IM norm at GM tournament in 1995
- Strategic enhancement — Tell Fritz 3 how to play in a specified pawn structure. Unlimited variations in game & analysis
- ♠♠♠ database - plays it perfectly
- 'Serious Mode' & Rate your play — simulate tournament conditions without takeback and hints
- Automatic annotations — Fritz 3 tells you the move, time taken, evaluation and search depth
- Fischer-type Blitz clock — with base & incremental time
- POWERBOOKS. 4 million opening moves for Fritz. Classified by ECO code (A00 to E99) Divided into 5 sections: A, B, C, D, E each £42.50, or all 5 for the price of 4

NEW!! GENIUS 4 For Windows [386+, VGA with Windows 3.1/95]

- UPGRADE from Genius 1/2/3 £89.95
 - Genius 4.0 Plus with Intel G.P. tournament book £45.00
 - Genius Master books - app. 10 million moves! £109.95
 - Genius Master books - app. 10 million moves! £99.00
- Programmed by 10 times Computer World Champion Richard Lang. All the features of Genius 3, and MORE, including:
- Multiple windows for: chess board, move record, analysis, clocks, book moves. These can all be resized, moved or closed
 - Powerful Database Search, Automatic analysis of all databases
 - Add analysis, as text with comments, to the moves in a game
 - Save and Load games to and from ChessBase or PGN
 - Fischer clock, online help, infinite installs, several piece designs
- Scored a 2662 performance at Aegon, computer-human tournament, scoring 5/7 at 40 in 2. Defeated Garry Kasparov in a 25 min. game at Intel GP London '94. =1st at 1995 World Microcomputer Ch.

NEW CHESSBASE PACKAGES:

- Starter Pack with BigBase '96 now 235,000 games £125
- Profi Pack with TopBase '96 now 300,000 games, 20,000 annotated by Kasparov, Anand, Shirov, Kramnik etc. + ChessBase Magazine 1996 + Alpha utility for super fast search. £325
- Mega Pack with MegaBase '96 now 450,000 games, + ChessBase Magazine 1996 + Alpha Utility + all Endgame CDs + Detail Keys (value £680) only £449
- Analysis Engines: Fritz 3/Doctor? 2/HIARCS 3.7 each £44.95
- BigBase '96: 235,000 games. CD £114.95, on disk £134.95
- TopBase '96: 300,000 games - 20,000 annotated by the world's best. Also includes all Soviet ch. CD only. £199.95
- ExtraBase '96: 150,000 hitherto unpublished games from '86 to '95 CD only £69.95
- MegaBase '96: The works! TopBase '96, plus ExtraBase '96 total 450,000 games. CD only £249.95



CBWIN1.1

HIARCS MASTER 4.0 [386+ or MAC] NEW! £89.95

- UPGRADE from version 3.0 £45.00
- Multiple levels. Reads PGN and Bookup database files. Selectable play styles, rate your play, user-editable openings book, Fischer-type clock. The most 'human-like' program
- Hiarcs 4.0 was 2nd behind GM Van der Wiel at the 1995 Aegon computer-human tournament, scoring 5/7 at a time limit of 40 moves in 2 hours for a 2631 performance, including a win over Yasser Seirawan! Winner 1993 World Computer Chess Ch.

REBEL 7

- By world champion programmer Ed Schroeder. At least 2350 Elo, unlimited installs, displays lots of information on ply selection and hash. Maximum of 64MB hash. Integrated database functions which read your ChessBase or PGN files. Huge opening book of 600,000 moves. Unlimited installs. Classifies openings by name or ECO.

NEW!! MCHES PRO 5.0 Just Out £89.95

- MCHES PRO UPGRADE (please return original disk) £45.00
- Expert system learning features: improve M-Chess's play by rechecking the 400K move openings book every game
- Shows lots of analysis and choice of moves
- Automated analysis of multiple games or positions
- Classifies game by name or ECO. Up to 10MB hashables
- Reads EPD and PGN from Bookup and the Internet
- =1st World Microcomputer Ch. '95. 5/7 at Aegon '95 for a 2652 performance, beating 3 GMs. No 1 in SSDF rating list

REBEL SILVER CD

- With 2200+ playing program and database of 158,000 quality games(!) in ChessBase and Rebel format. Only £39.95

BOBBY FISCHER TEACHES CHESS CD

- At last! a multimedia chess tutor for beginners. Over 300 interactive chess lessons. A picture history of chess with 300 photographs and commentary, plus 500 of Fischer's greatest games. Strong chess-playing engine for practice games. With beginner to expert levels. £39.99

CHESSMASTER 4000 CD/Disk [386+ WINDOWS]

- Best graphics, loads of piece designs and board views, great for kids, with great tutorial features and natural language analysis, but also very strong! 2200+ / BCF 200+ £35.99

TILBURG FONTS [For WINDOWS + MAC]

- (Windows/TrueType) Figurines and diagrams. Become a chess publisher instantly. £31.95

TASC TUTORIALS-Interactive chess courses.

- LEVEL 1: Beginners, LEVEL 2: Basic tactics, LEVEL 3: For 100-150 BCF/1400-1800 Elo, LEVEL 4: 120-175 BCF/1560-2000 Elo, LEVEL 5: Advanced tactics each £29.95

CHESSBASE ENDGAME CDS 1, 2, 3 £119.95

- John Nunn's delight, all 5 piece endgames databased, 1000s of positions. Works in ChessBase or alone.

Bookup 8.5 for PC or Bookup 2.3 for MAC £99.95

- The club player's database which stores chess positions in a tree structure and allows unlimited annotation of moves. Bookup data is aimed specifically at players below Elo 1800/BCF 150. Includes 1 free Bookup data disk. Interfaces with HIARCS 4.0

Bookup Viewer [call for free demo disk] £19.95

- Reads all books on disk: King and Pawn, Smith Morra Gambit, London System 1&2, Rubinstein Collection, Closed Game, Scheveningen Sicilian, Samisch Seminar, Open Game, Defence. £19.95 each.

Editorial

by Alan Borwell No. 54
June/July 1996

We are late again - no excuses, other than the usual pressures of trying to do too many things and not enough time! However, we have been able to include details of our AGM, the new SCCA and ICCF ratings and, we hope, some interesting articles for you to read whilst basking in the garden!

David Kilgour is Scotland's third GM and also our new Vice President - many congratulations to one of our longest serving active members! We have an article about David in this issue.

It is very pleasing to see 10 more SCCA players in the 1996 ICCF rating list, with a total of 47 players with ratings over 2000. Notable first appearances are *Joe Watson* (2500) and *Douglas Finnie* (2460), who are both playing for Scotland in the IV NATT.

This year's ICCF Congress in Bad Neuenahr in Germany is expected to attract a record number of delegates/officials and both George Pyrich and I will be attending in our new capacities. George is now the ICCF Qualifications Commissioner, as well as SCCA Delegate, and I will be attending as ICCF Deputy President (Development). A full report will be included in our next edition, which we expect to have available late September/early October.

To all our members, subscribers and readers, we hope that you are enjoying your CC and this sport-saturated summer!

Index of Contents

	Pages		Pages
Editorial/Index	1	SCCA Grading System	32/38
Endgame Tournament	2	British Junior CC Champs	38
SCCA AGM Minutes	3/5	SCCA Grading List 1996	39/42
SCCA Accounts	6/7	ICCF/SCCA "Top of Lists"	42
Championship/Candidates 1995/96	8	Games Section	43/51
Candidates 1996/7	9	100 Club	52
Premiers/Majors/Minors 1996	10/11	Bits 'n' Pieces	53/57
Quartets/Openings 1996	13	BB Partridge/AJ Shaw Memorials	58/59
Challenge Tournament	14/15	Book Reviews	60/63
Scottish CCA League 1996	16/17	ICCF Individual Tournaments	64
Winning Continuations	19	Friendly Internationals	65
Scotland's 3rd Grandmaster	21/27	Olympiad XI Final	66/67
Reader's letter	27	Olympiad XII Preliminaries	68/69
Does Int CC have a future	28/30	European Team Champs Prelims	70/79
Winning Continuation Solutions	30	Notices etc	80

Subscription Life Member - £60 (incl Magazine in first year); Annual Member - £13 (incl Magazine); Rates 1996/7 SCCA Magazine only - £9 (4 editions p.a.); Overseas subscribers - £15 (incl postage)

Mail order: CB Software, IM Malcolm Pein, 37 Marsh Lane, London NW7 4QJ.
VISA Tel: 0181 959 0670. Fax 0181 906 8771. Compuserve 100135,2267 ACCESS

Endgame Tournament

[by Bernard Milligan]

Our Management Committee are constantly looking for ways to increase the opportunities and diversity of competitive play for our members. We are always glad when members come forward with new ideas.

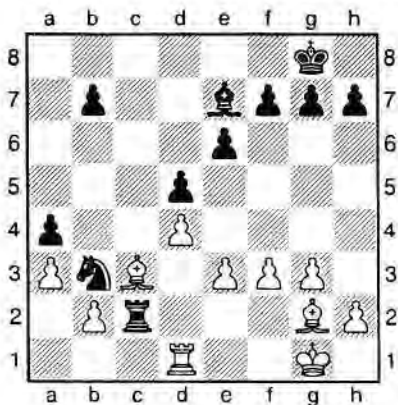
Since adjudication dates mean that games are often not played to completion, Jim Anderson suggested that members might like to take part in Endgame Tournaments. After due investigation, I am delighted to announce that we will indeed now run Endgame Tournaments, and also to thank Jim for his fine suggestion.

The tournaments will be arranged for sections of 4 players with an entry fee of £3. Section winners will receive a medal. All games will begin from a set position, selected by the controller. These positions will be selected from actual games and will have equal chances for both sides. There will be no traps, or forced wins for one side. At the end of the tournament, anyone sending in a stamped addressed envelope will be sent a copy of the moves from the original games. This will be handy for players who want to compare their games against the original game.

Four positions will be used for each group, but no player will have the same position as Black and White against the same opponent. Positions to be used will not be published in the magazine so that no player can get an advantage by spending lots of time analysing before the tournament begins. As an example, you will find a couple of positions at the end of this article.

Entries should be sent to Alan Hind. Alan will be pleased to answer any questions about the tournament, as will I. If you want to give either of us a call, our addresses and telephone numbers can be found at the front of the magazine. Sections will begin as soon as 4 entries are received, so get your pens out and become the first SCCA members to enjoy this new type of tournament.

Examples of Positions likely to be used



SCOTTISH CORRESPONDENCE CHESS ASSOCIATION

Minutes of the Annual General Meeting held at Chess Suppliers (Scotland) Ltd., Hope Street, Glasgow, on Sunday 2nd June 1996 at 4.00 p.m.

Present: A.P. Borwell (President), C.R. Beecham, Mrs. M. Borwell, A. Hind, A.T. Hislop, D.A. Kilgour, B. Milligan, G.D. Pyrich, I. Sneddon and T. Thomson.

Apologies: A. Armstrong, R.W.M. Baxter, P.M. Giuliani, D.M. Livie, G.W.G. Livie and I.A. Marks.

President's Remarks

The President warmly welcomed everyone who had come along. Although there were fewer than in the past couple of years, it was good to see non-Committee members attending.

He stated that it was with regret he had to report that during the year both Phil Giuliani and Alan Armstrong had resigned from the Committee due to other commitments. We had been sorry to lose their valuable services but had decided not to replace them before this AGM.

He intimated that, if elected for another year as President, this would be his 20th year in office since the Association was officially constituted on 27th February 1977. He would be prepared to accept re-election but on the understanding that he would wish to stand down in 1997.

Successes in the last twelve months included Andrew Muir's award of the GM title at the ICCF Congress in Norway 1995 and David Kilgour's achievement of the GM title which is likely to be ratified and awarded at the ICCF Congress in Germany 1996. Scotland would then have three Correspondence GMs.

Scotland has only four games remaining in the Olympiad Final and depending on the outcome of these and of games remaining for Canada and Russia, we could finish third, fourth or fifth. If we finish fourth or better, we almost certainly would qualify for the next Final.

During 1995, the 50th edition of the Magazine was published and it continued to receive domestic and international acclaim.

The Minutes of the last Annual General Meeting held on 4th June 1995, which were published in Magazine No. 51, were approved.

Secretary's Report

The Secretary reported the following:

- It was a year of achievement. In addition to what our President had mentioned by way of introduction:
 - (a) Our Publicity and Membership Officer, Bernard Milligan, had worked hard to follow up on enquiries and on members not renewing and looking to new ways to encourage more participation. As a result, membership had increased by 9 or 10 over the previous season.
 - (b) In the domestic tournaments ending in 1995, the Championship was won jointly by Chris McKay and Joe Watson, and the First Division of the League by Bourne End Bucks.
 - (c) We continued to have adequate numbers of Controllers and for this we were extremely thankful. It would be nice to have surplus to enable us to allow some to have an occasional "sabbatical".

Treasurer's Report

The Treasurer presented audited accounts for the year to 31st March 1996 (see details on following pages).

Minor comments were made and movements from the previous year explained. Specific comments were:-

- 1996 showed a surplus of £542 which compared favourably with the deficit in 1995 (which was due principally to Scotland's hosting of the ICCF Congress).
- Magazine printing costs had increased, but it continued to generate revenue.
- ICCF fees and the deficit thereon related to the grading fees paid for the Bernard Partridge Memorial and the Alan Shaw Memorial tournaments.
- Committee Members' expenses had increased significantly as the President/Magazine Editor had not claimed postage expenses for three years and hence this year's figure was not truly representative.

With no further questions being asked, the accounts were accepted unanimously.

International Secretary's Report

The International Secretary reported the following:

- The uptake by members for the ICCF Email and fax tournaments had been low. It was thought that this was due to the lack of such facilities within the membership.
- Although Email and fax were now becoming standard, there was no doubt that there was still a significant future for the more traditional correspondence tournament.
- It was likely that a new English language correspondence chess magazine would be produced in the near future (co-ordinated by Tim Harding).

- The International Secretary had been appointed Qualifications Commissioner for ICCF (responsible for ensuring that all aspects of ICCF title awards were handled correctly).
- New friendly internationals had been started or were proposed against India, Japan, Uruguay, Israel and South Africa, as well as the "more traditional" nations.
- The Association had declined an invitation from the BPCF to share in the hosting of the next World Cup, but had offered our services to assist with provision of Controllers, if required.

Election of Office-Bearers

The following were elected to the Executive Committee:

President	Alan P. Borwell
Vice President	David A. Kilgour
Secretary	Alan Hind
Treasurer	David A. Kilgour
Assistant Secretary	Iain Sneddon
International Secretary	George D. Pyrich (also ICCF Delegate)
Assistant International Secretary	C. Richard Beecham
Grading Officer	Raymond W.M. Baxter
Publicity & Membership Officer	Bernard Milligan
Other Member	Tom Thomson

Thanks were given to all for their efforts over the last year. Special thanks were accorded to Raymond Baxter who had taken over the position of Grading Officer last year and had put in a great deal of hard work to ensure that the system was being operated correctly and timeously.

David Kilgour was elected to the joint post of Vice-President/Treasurer and it was agreed that this was allowable within the Constitution.

Election of Auditor

It was agreed that the present Auditor, Mr. Hamish Bell, be re-appointed for the ensuing year.

Subscriptions

It was unanimously agreed that the only changes to subscriptions for 1996/7 would be the increase of £1 to those fees which included Magazine subscription, e.g. Ordinary Membership would increase from £12 to £13. Magazine subscription for overseas residents was to increase to £15 for 1 year and £25 for 2 years, and the cover price of the Magazine would increase to £2.50 per issue.

There was to be no increase to tournament fees.

Any Other Business : None

**SCOTTISH CORRESPONDENCE CHESS ASSOCIATION
FINANCIAL ACCOUNTS FOR THE YEAR ENDED 31 MARCH 1996**

1995		GENERAL ACCOUNT	1996	
£	£	INCOME	£	£
		MEMBERSHIP FEES		
466.00		Annual	546.00	
<u>159.60</u>		Life Members Fund	<u>157.42</u>	
625.60			703.42	
<u>(32.00)</u>	593.60	less Discounts	<u>(34.00)</u>	669.42
		COMPETITION FEES		
471.00		Individual	435.00	
78.00		League	74.00	
<u>110.00</u>		Special Tourneys	<u>1,550.00</u>	
659.00			2,059.00	
<u>11.40</u>	670.40	Less Prizes/Trophies/Engraving	<u>(1,561.49)</u>	497.51
		MAGAZINE		
1,644.00		Sales	1,863.11	
<u>485.00</u>		Adverts/Leaflets	<u>433.37</u>	
2,129.00			2,296.48	
<u>(943.82)</u>	1,185.18	less Expenses	<u>(1,921.94)</u>	374.54
		ADJUDICATIONS		
6.00		Fees Received	36.00	
<u>(10.00)</u>	(4.00)	Fees Paid and Refunded	<u>(6.00)</u>	30.00
		ICCF ENTRIES FEES		
154.00		Received by Scottish CCA	137.00	
<u>(187.50)</u>	(33.50)	less Paid to ICCF (incl Rating Fees)	<u>(238.89)</u>	(101.89)
	450.00	OTHER PRIZES - Excess in prize fund previously provided		0.00
	48.00	INTERNATIONAL MATCH FEES		42.00
		100 CLUB		
955.00		Subscriptions	934.00	
<u>(513.50)</u>	441.50	less Prizes	<u>(456.00)</u>	478.00
	407.00	SALE OF POSTCARDS/ICCF BADGES		366.25
	111.53	INTEREST RECEIVED		90.45
	350.00	GRANT - Scottish Chess Association		400.00
	141.96	DONATIONS		163.48
	0.00	MISCELLANEOUS INCOME		86.75
	<u>155.00</u>	From QBS re Sale of Books	<u>173.00</u>	
	<u>4,516.67</u>		<u>3,269.51</u>	

1995	£	GENERAL ACCOUNT	EXPENDITURE	1996	£
	20.00	SCA Affiliation			00.00
	25.00	Contribution to BPCF			25.00
	37.50	ICCF Membership			41.67
	337.07	Controllers' Expenses			315.05
	70.96	Committee Members' Expenses			686.67
	66.81	Bank Charges			1.33
	(150.00)	Provision for Corporation Tax			0.00
	150.00	Auditor's Fee			90.00
	30.00	Adverts			0.00
	543.99	Stationery and Printing			350.52
	17.50	Lottery Licence			17.50
	<u>4,183.44</u>	ICCF Congress			<u>1,200.00</u>
	<u>5,332.27</u>				<u>2,727.74</u>
	(815.60)	SURPLUS/(DEFICIT) FOR THE YEAR			541.77
		LIFE MEMBERS ACCOUNT			
52.00		Membership Fees	60.00		
<u>28.92</u>	80.92	Interest Received	<u>25.75</u>		85.75
	(159.60)	less Transfer to General Fund			<u>(157.42)</u>
	<u>(78.68)</u>	SURPLUS/(DEFICIT) FOR THE YEAR			<u>(71.67)</u>
		BALANCE SHEET AT 31st MARCH 1996			
	£	ASSETS			£
	594.18	CLYDESDALE BANK DEPOSIT ACCOUNT			3,255.76
	1,238.49	CLYDESDALE BANK CURRENT ACCOUNT			138.42
	19.00	NATIONAL GIROBANK			19.00
	4,934.40	NATIONWIDE ANGLIA			5,625.49
	30.00	DEBTORS			<u>0.00</u>
	<u>6,816.07</u>				9,038.67
		LESS LIABILITIES			
	(100.00)	CREDITORS			<u>(1,852.50)</u>
	<u>6,716.07</u>				<u>7,186.17</u>
		REPRESENTING			
		CAPITAL ACCOUNT	OPENING BALANCE	SURPLUS/DEFICIT	CLOSING BALANCE
		General Fund	£5,227.63	£541.77	£5,769.40
		Life Members Fund	£1,488.44	(£71.67)	£1,416.77
			<u>£6,716.07</u>		<u>£7,186.17</u>

Auditors Report : I have examined the foregoing Accounts and have obtained such explanations as I consider necessary. In my opinion, these accounts give a true and fair view of the state of the Association's affairs at 31st March 1996.
(signed) H.B. Bell, C.A.

CHAMPIONSHIP 1995/96

Controller: A. Maxwell

No		1	2	3	4	5	6	7	8	Pts
1	J COPLEY	◆		½	1		0		0	
2	S R GILLAM		◆	1		1	1	1	0	
3	A T HISLOP	½	0	◆		0		½	0	
4	D A HUGHSON			0	◆		½	½	0	
5	G W G LIVIE	0	0	1		◆	½	1	1	
6	M P ROBERTS	1	0		½	½	◆	½	0	
7	T THOMSON		0	½	½	0	½	◆	0	
8	J WATSON	1	1	1	1	0	1	1	◆	6

CANDIDATES 1995/96

Controller: C.R. Beecham

SECTION A

No		1	2	3	4	5	6	7	Pts
1	S BRADY	◆	1	1	1		1	1	
2	M H DUNN	0	◆	0	0	0	0	0	0
3	I MACKINTOSH	0	1	◆	1	1	1	1	5
4	A MacQUEEN	0	1	0	◆	0	1	1	3
5	S A MURRAY		1	0	1	◆			
6	J RYAN	0	1	0	0		◆	1	
7	K SEYFRIED	0	1	0	0		0	◆	

SECTION B

No		1	2	3	4	5	6	7	Pts
1	W M COOK	◆	1	½	½		1	½	
2	D R CUMMING	0	◆	0	½	½	1	0	2
3	C J LENNOX	½	1	◆	1	1		½	
4	S MACGILCHRIST	½	½	0	◆			0	
5	A N MacMILLEN		½	0		◆			
6	A C NORRIS	0	0				◆	0	
7	R TURNER	½	1	½	1		1	◆	

CANDIDATES 1996/97

Controller: C.R. Beecham

SECTION A

No		1	2	3	4	5	6	7	Pts
1	B GOODWIN	◆							
2	A WRIGHT		◆			0			
3	M HARKINS			◆					
4	J A CLAYTON	0	0	0	◆	0	0	0	w/d
5	I A MACKINTOSH		1			◆			
6	A T HISLOP						◆		
7	A N MacMILLEN							◆	

SECTION B

No		1	2	3	4	5	6	7	Pts
1	D CRICHTON	◆							
2	A NISBET		◆						
3	J COPLEY			◆					
4	A R ANGUS				◆				
5	R TURNER					◆			
6	J RYAN						◆		
7	J A FINDLAY							◆	

SECTION C

No		1	2	3	4	5	6	7	Pts
1	D A HUGHSON	◆							
2	W M COOK		◆						
3	K SEYFRIED			◆					
4	D R R ELLIS				◆				
5	I REEMAN					◆			
6	G H BIRD						◆		
7	S COLLINS							◆	

PREMIER TOURNAMENTS 1996

Controller: J. Anderson

SECTION A

No		1	2	3	4	5	6	7	8	Pts
1	W HYND	◆								
2	F HALL		◆						0	
3	G LLOYD			◆						
4	K GORDON				◆					
5	J A FINDLAY					◆				
6	A G E BIRD						◆			
7	S M YOUNG							◆		
8	S RILEY		1						◆	

SECTION B

No		1	2	3	4	5	6	7	8	Pts
1	D TRENNER	◆					0	½		
2	G SAXTON		◆							
3	R BEACON			◆			0			
4	S G MACKENZIE				◆					
5	W HARPER					◆				
6	D R CUMMING	1		1			◆	½		
7	I SNEDDON	½					½	◆		
8	R WESTON								◆	

SECTION C

No		1	2	3	4	5	6	7	Pts
1	K J GUTHRIE	◆				0	0	0	
2	M MAY		◆						
3	J M HERRIES			◆					
4	F TEUNISSE				◆				
5	A C BROWN	1				◆			
6	R A GIULIAN	1					◆		
7	M HARKINS	1						◆	

SECTION D

No		1	2	3	4	5	6	7	Pts
1	B MILLIGAN	◆							
2	A ROBERTS		◆						
3	A D KILGARIFF			◆				0	
4	F TEUNISSE				◆				
5	A MacQUEEN					◆			
6	A R ANGUS						◆	1	
7	S RILEY			1			0	◆	

MAJOR TOURNAMENTS 1996

Controller: A. Maxwell

No	SECTION A	1	2	3	4	5	Pts
1	J I COLTART	◆					
2	A ARMSTRONG		◆				
3	J CASSIDY			◆			
4	R BEACON				◆		
5	T F Mcainsh					◆	

No	SECTION B	1	2	3	4	5	Pts
1	R B CROSBIE	◆				0	
2	T W POLLOCK		◆	0			
3	G LLOYD		1	◆			
4	S M YOUNG				◆		
5	R J SIMPSON	1				◆	

No	SECTION C	1	2	3	4	5	Pts
1	A KNOX	◆	0 0	½			
2	J I COLTART	1 1	◆		½		
3	G LLOYD	½		◆	½		
4	I SNEDDON		½	½	◆		
5	A D CRAWFORD					◆	

MINOR TOURNAMENTS 1996

Controller: D.J. Savage

No	SECTION A	1	2	3	4	5	Pts
1	C M DOWELL	◆					
2	M JESSING		◆	1 0	1 0		
3	A R PETRIE			◆			
4	J S CRAWLEY		0 1	0 1	◆		
5	M G BROWN					◆	

No	SECTION B	1	2	3	4	Pts
1	S SUTHERLAND	◆				
2	J MORROW		◆		0 2	
3	J F CUMMING			◆		
4	J I COLTART		2 0		◆	

No	SECTION A	1	2	3	4	5	Pts
1	S A GIULIAN	◆					
2	J M ARMSTRONG		◆	0 2			
3	S DONOHOE		2 0	◆			
4	G HAMILTON				◆		
5	J W KILGOUR					◆	

CHESS SUPPLIERS SCOTLAND

Visit Chess Suppliers Scotland on the first floor, 15 Hope Street, Glasgow G2 6AQ Tel/Fax : 0141-248-2887 (24 Hrs)

You are welcome to drop in and browse through Scotland's largest display of chess publications, computers, software, chess sets and other accessories. If we haven't got it in stock we will get it for you!

The location in Hope Street is opposite Glasgow Central Station. We look forward to seeing you here.

EVERYTHING FOR THE CHESS PLAYER AT



Opening Hours

11.00 am - 5.30pm Tuesday to Friday 9.30am - 5.30pm Saturday

Available now...

CHESS COMPUTERS: MEPHISTO, NOVAG • 100s of BOOKS and MAGAZINES • CHESS SETS (plastic/wood) • CHESSBOARDS • CHESS CLOCKS • TRAVEL CHESS SETS • SPECIALIST IN ALL CHESSBASE PRODUCTS • Pop in for friendly advice before you buy Devastatingly powerful chess software Chess Genius 3, Fritz 3, MCHESSE, Hiarses - **Try Before You Buy** at the biggest dedicated chess shop in Scotland.

Post Free! Post Free! Post Free! Post Free! Don't worry if you cannot make it along to the showroom - we will gladly send out your order free of all postage.



5% discount to members of the Scottish Chess Association



QUARTETS 1996

Controller: A. Armstrong

No	Postal Knight	1	2	3	4	Pts
1	T McMORRAN	◆				
2	A MacQUEEN		◆			
3	A WRIGHT			◆		
4	E A BAILEY				◆	

No	Postal Shield	1	2	3	4	Pts
1	R BEACON	◆	○			
2	I MACKINTOSH		◆			
3	A C BROWN	1		◆		
4	A ROBERTS				◆	

No	Q188	1	2	3	4	Pts
1	R BEACON	◆		11	11	
2	J A CLAYTON		◆	11	11	
3	C DOWELL	○○	○○	◆	11	2
4	S SUTHERLAND	○○	○○	○○	◆	○

No	Q189	1	2	3	4	Pts
1	J ANDERSON	◆				
2	D McROBERTS		◆		1/2	
3	R LOUGHAN			◆		
4	D R CUMMING		1/2		◆	

No	Q190	1	2	3	4	Pts
1	J CASSIDY	◆	1			
2	C MACGREGOR	○	◆			
3	B W GRANT			◆		
4	S M YOUNG				◆	

No	Q191	1	2	3	4	Pts
1	A G E BIRD	◆				
2	J W KILGOUR		◆			
3	G PLANT			◆		
4	T A H TAYLOR				◆	

No	Q192	1	2	3	4	Pts
1	R BEACON	◆				
2	A CAMPBELL		◆			
3	J RAWLINSON			◆		
4	I SNEDDON				◆	

MAJOR/MINOR/QUARTETS/CHALLENGE
Entries can be made at any time to Alan Hind. New pairings will be arranged when there are sufficient new players to do so.



OPENINGS TOURNAMENTS 1996

Controller: T Thomson

No	Section A	1	2	3	Pts
1	J G BLENCOWE	◆			
2	J W KILGOUR		◆		
3	S SUTHERLAND			◆	

No	Section B	1	2	3	Pts
1	J CASSIDY	◆			
2	J S CRAWLEY		◆		
3	S M YOUNG			◆	

Opening moves are: 1 d4 c5 2 d5 f5 (Clarendon Court Defence)

New Mid-Season Openings Tournaments are available as follows:-

OT/96/C - King's Gambit Accepted 1 e4 e5 2 f4 exf4 3 ♖f3 d5

OT/96/D - Queen's Gambit Accepted 1 d4 d5 2 c4 dxc4 3 e4 e5

Entries to Alan Hind - Sections will begin when 3 entries have been received!

CHALLENGE TOURNAMENT [by Bernard Milligan]

Games in the Challenge tournament are progressing well at the moment. Since the last magazine, we have attracted a few new members and I hope that they are now enjoying their games. As always, there are players awaiting opponents. I have a number of players who are always willing to take on new opponents, but I am always looking for more volunteers! It makes my life a lot easier when participants are willing to help out in this way, so please give me a call!

Enquiries come in on a fairly regular basis regarding rules and other sundry problems. These are usually of a specific nature and I am always happy to sort them out. Some enquiries are of a more general nature, so, from time to time, I will give general details in this column.

One such enquiry asked by a number of players, is "what games count for the calculation of prizes?" This is quite simple. All games started and finished in one season will be used to calculate points for prizes at the end of that season. Any games which go over two seasons will not be used in the calculation of prizes. This ensures that everyone has roughly the same playing time and therefore roughly equal chances. In the calculation of points for class promotion or demotion, then all games will count, even if the game has been played over more than one season.

Pairings since the last Magazine are as follows:

Class 1	Pairings/Opponents' Membership Nos
A. Armstrong (049)	349
R. Beacon (155)	057, 347, 349
D.R. Cumming (166)	040
I. Sneddon (057)	040, 155, 347, 349
Class 2	
R.B. Crosbie (233)	312
Class 3	
C. Almazo-Mato (317)	108 (awaiting 6)
E. Bolduc (349)	049, 057, 155
J.S. Cairney (040)	057, 166
J. Cassidy (108)	317, 346
C. Dowell (316)	347
J. Henderson (347)	057, 155, 316
Class 4	
C.R. James (312)	233
A.R. Petrie (315)	346
Class 5	
P. Wildig (346)	108, 315

continued overleaf/.....

The following results were notified in the period 25/2/96 to 22/5/96

317	C. Almazo-Mato	½ 1½	I. Sneddon	057
317	C. Almazo-Mato	0 2	A. Armstrong	049
155	R. Beacon	2 0	C. Dowell	316
166	D.R. Cumming	½ 1½	A. Armstrong	049
166	D.R. Cumming	0 1	C. Black	L88
166	D.R. Cumming	½ ½	J.P.E. Jack	L15
312	C.R. James	1 1	R.B. Crosbie	233
312	C.R. James	0 2	M.G. Brown	318
312	C.R. James	0 1	C.A. Macgregor	L84
334	B. Miller	0 2	J. Cassidy	108
334	B. Miller	0 2	A.R. Petrie	315
334	B. Miller	0 2	C. Black	L88
334	B. Miller	0 2	C. Dowell	316
315	A.R. Petrie	½ ½	C. Dowell	316
315	A.R. Petrie	1 0	A. Madden	330
315	A.R. Petrie	0 1	J. Dunnett	341



"Orang Utan" chessmagazine

The one and only magazine for the
1.b4 player
(since 1987)

Published 3 times a year
(february, june & november)
with each time **over 100 1.b4 games**,
(and related systems like *Santasiere's Folly*)
annotations, diagrams and articles.

Subscription:
Europe: DM 15,-/year (or equivalent)
Overseas: US\$ 10,-/year

For information and free issue write to:
Dirk Van Esbroeck
P.O.Box 71
B-9120 Beveren-Waas (Belgium)

OVERSEAS SUBSCRIBERS

Subscription for one year's editions of the Scottish CCA Magazine can be obtained from the Editor for £15, or £25 for 2 years (inclusive of postage)



Address Changes?

Members are asked to advise changes of address promptly to their opponents, the tournament secretary, the Scottish CCA Secretary and the Editor of the SCCA Magazine.

SCOTTISH CCA LEAGUE 1996

DIVISION 1 (Controller - A. Nisbet)

A BOURNE END BUCKS

1	J Watson	v E1
2	R De Coverly	v D2
3	A Reed	v C3
4	E Tweeddale	v B4
5	E Bolduc	v F5

B KIRKCALDY KINGS

1	G D Pyrich	v D1
2	T Thomson	v C2
3	A Burnett	v F3
4	I Marshall	v A4
5	S Donohoe	v E5

C LEWIS CHESS CLUB "A"

1	A MacLeod	v F1
2	M J MacLeod	v B2
3	R Malcolmson	v A3
4	C Wallace	v E4
5	R Swiergala	v D5

D PERTH CORRESPONDENTS

1	A P Borwell	v B1
2	I Mackintosh	v A2
3	J N Falconer	v E3
4	D Harvey	v F4
5	I W S Mitchell	v C5

E GIFFNOCK & CLARKSTON

1	C F Boyle	v A1
2	I S Campbell	v F2
3	R A Giulian	v D3
4	W E Leithead	v C4
5	A MacQueen	v B5

F BLACK KNIGHT

1	C R Beecham	v C1
2	G R Sprott	v E2
3	R Kilpatrick	v B3
4	I F Reeman	v D4
5	A T Hislop	v A5

DIVISION 2 (Controller - J.P.E. Jack)

A FIVE BRAVE ENGLISHMEN

1	D J R Barnes	v E1
2	A N Morris	v D2
3	K Champion	v C3
4	R W Goosey	v B4
5	A J C Rawlings	v F5

B BRUTAL REALISM

1	J S Murray	v D1
2	A Thomson	v C2
3	P Coffield	v F3
4	W Taylor	v A4
5	S Brady	v E5

C CASTLEHILL 1

1	C A Wilman	v F1	0 0
2	D R Reid	v B2	
3	R E Clapham	v A3	
4	D L Kleppang	v E4	
5	J Wilman	v D5	

D SUPERKINGS

1	A C Brown	v B1	
2	A Armstrong	v A2	
3	M Keen	v E3	
4	B Milligan	v F4	
5	R Crosbie	v C5	1 1

E EDINBURGH WEST

1	S R Gillam	v A1
2	B McEwan	v F2
3	W Grant	v D3
4	A Seywright	v C4
5	S M Young	v B5

F DUNDEE & VICTORIA

1	F Stevenson	v C1
2	R Burnett	v E2
3	M Munro	v B3
4	C Ironside	v D4
5	N Ferrie	v A5

DIVISION 3 (Controller - I. Sneddon)

A CASTLEHILL 2

1	C A Strong	v E1	0 0
2	R Noble	v D2	
3	R Gow	v C3	0
4	M M Chalmers	v B4	
5	R J Lockhart	v F5	0 0

B BUSMAN'S HOLIDAY

1	S Collins	v D1	
2	A R Petrie	v C2	
3	C Dowell	v F3	
4	T Thompson	v A4	
5	A Madden	v E5	0

C THE SOCIAL EAGLES

1	G E Wallwork	v F1	
2	M J Gifford	v B2	
3	J R Richards	v A3	1
4	D Gleed	v E4	
5	S Hilton	v D5	0

D PERTH HIGH SCHOOL FPs

1	B Jenkins	v B1	
2	I Petrie	v A2	
3	A MacDonald	v E3	
4	S K McInroy	v F4	
5	J I Coltart	v C5	1

E CATHCART

1	D M Livie	v A1	1 1
2	G W G Livie	v F2	
3	M Harkins	v D3	
4	J Neilson	v C4	
5	A Maxwell	v B5	1

F KIRKINTILLOCH PLUS FOUR

1	R F Turner	v C1	
2	W Harper	v E2	
3	D R Cumming	v B3	
4	P McConnell	v D4	
5	A Hind	v A5	1 1



FRIENDLY INTERNATIONALS

Members wishing to play in further friendly internationals should advise our Assistant International Secretary, Richard Beecham, 28 Morris Road, Prestwick, Ayrshire, KA9 2JW.

MAJOR/MINOR/ QUARTETS/CHALLENGE

Entries can be made at any time to Alan Hind. New pairings will be arranged when there are sufficient new players to do so.

THE BEST GAMES IN 30 YEARS



READERS' CONTEST

The readers are invited to choose the ten best games from the 64 golden games.

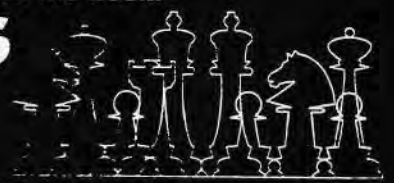
64 PRIZES FOR THE MOST SUCCESSFUL READERS:

I prize	3.200 DEM	5th - 8th prize -	64 books each
II prize	1.600 DEM	9th - 16th prize -	32 books each
III prize	800 DEM	17th - 32nd prize -	16 books each
IV prize	800 DEM	33rd - 64th prize -	8 books each

For other information is in the book.

NEW MONOGRAPHS

- A 58-59 Karpov
- B 66 Anand



The second edition of the ENCYCLOPAEDIA OF CHESS OPENINGS volume A available in June

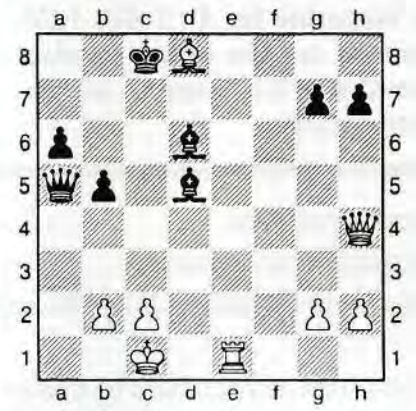
The first volume of the ECO was published 22 years ago. In June all second editions of the 5 volumes - A, B, C, D, E - will be available.

ChessInformant

WINNING CONTINUATIONS

Selected by Nickolai Gurtovoi

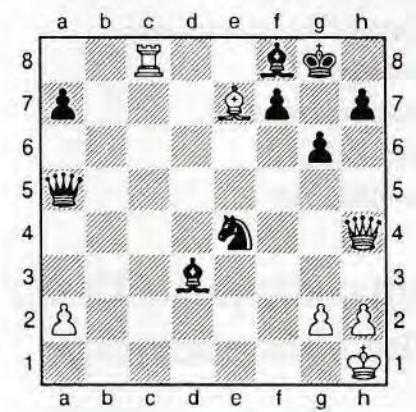
A BLACK TO MOVE



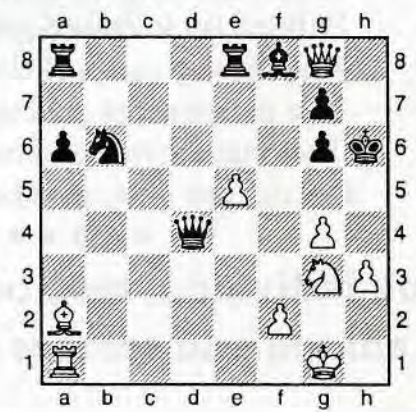
C WHITE TO MOVE



B BLACK TO MOVE



D WHITE TO MOVE



Solution on page 30

Scottish Chess Association

... promoting chess throughout Scotland

You can subscribe to Scottish Chess magazine for £12.60, (EU £16, ROW £18) but if you ever venture out the house to play chess you get so much more by becoming a full member of the Scottish Chess Association

- ▶ *Scottish Chess* magazine - 6 issues per year
- ▶ Reduced entry fees for most registered congresses
- ▶ 5% discount on purchases from *Chess Suppliers Scotland* and *Chess Direct Ltd*
- ▶ Special promotional offer for first time subscribers to *Chess Monthly* 15 months subscription *and* a free book for £20
- ▶ Book club offers - regular offers to purchase selected titles at reduced prices
- ▶ Entitlement to enter SCA Training Events
- ▶ Entitlement to enter Scottish Chess Championships
- ▶ Membership card and chess calendar
- ▶ Free personalised grading printout on request.
Free current year printout by fax or post.
- ▶ Discount on SCA scorebooks/scoresheets



Full individual membership costs just £19 per annum and secures all the above benefits

Please make cheques payable to the *Scottish Chess Association* and send to

**SCA Secretary, Frank Banaghan, 26/5 Causewayside,
EDINBURGH, EH9 1QB
(phone 0131-667-0852)**

And then there were three... Scottish CC Grandmasters!

David Kilgour has achieved his GM title norm by scoring 9/12 pts in the Algerian Invitation Tournament and, with two games remaining, he also has an excellent chance of 1st place! David is also close to qualification for the next World CC Championship Final, as he is strongly placed in his World ¾-Final Section.

We asked David to tell our readers a little about himself and his thoughts about CC and life in general. Our new Vice-President is a very modest and unassuming person, but this is what he provided!



David celebrates with a "split",or is it a "fork"!?

David Kilgour

I was born in Dundee on 18th September 1957 and lived there until I married in 1983, from which time we have moved around Scotland. Currently, my wife Sheila and I live in Galashiels with two cats.

I played over-the-board chess until about 1984 but realised that even in Scottish terms I was never going to be good at it, so I started playing correspondence chess about 1972 (with no real success).

My games were mostly interesting, if sometimes difficult to understand, but I still remember one window envelope that Chris Morrison and I shared for thirteen moves using only one stamp! [*This practice now outlawed!! - Ed*]

From about 1984, my play improved and my results reflected this improvement.

I must parallel the article in the previous magazine by Andrew Muir at this stage, by trying to identify the reasons for my success (well in becoming a Grandmaster at least) - see page 18 of the March 1996 edition.

1. *"I have been lucky not to be hit by too many opening innovations".* This is also the case in my recent games but, on the other hand, when I am lost in most modern opening lines, I rarely notice that my game has produced an innovation anyway.

2. *"Other things in life have not distracted me too much from my games."* In my case, my games have distracted me from other things in life!

3. *"Playing only one tournament at a time and deliberately not playing too many games at once."* I have always thought that this is a good idea. It was Douglas Bryson who first told me that this is the way to get good results, but I have always tried to play in as many events as possible as I can still remember the times when I was not selected to play.

4. *"I never play quick moves, no matter how obvious they may seem."* I usually try to play quick moves or else the flood of cards coming in would engulf me.

5. *"Writing down all my analysis so as not to forget it."* I do agree with this factor and have in the last three or four years started to use a notebook to keep my analysis, and, reviewing my notebook at this present time, find that I have almost completed the first page!

As you can see from the above, it takes all types to make up the world of chess players, but I would say that the Andrew Muir method of playing correspondence chess by recording everything and only playing a limited number of games is probably the better method to achieve success.

Alan Borwell asked me to annotate a couple of exciting games but unfortunately I have not played any exciting games in the last twenty years, so I offer the following two *mildly exciting* games as my best effort!

World XVI ¼-Final, 1993-5

White: D.A. Kilgour

Black: M. Lecroq

Sicilian - Dragon B77

1	e4	c5
2	♘f3	d6
3	d4	cx d4
4	♘xd4	♘f6
5	♘c3	g6

I still remember saying, "Not another Dragon." My loss against Mr. Bauer in the Scottish CCA Magazine event was fresh in my mind.

6	♘c3	♘g7
7	f3	0-0
8	♙d2	♘c6
9	♘c4	♘d7
10	0-0-0	♙c8
11	♘b3	♘e5
12	h4	h5

This is all the same as my game against Mr. Bauer and I think he published that game somewhere.

13 ♘h6

The main lines include 13 ♘g5 and 13 ♙b1: both seem to give interesting games with chances for both sides.

My move was following the Bauer game mentioned above.

13 ♙a5

Black's last move is not recommended in the books but I think that it is quite good. In the Bauer game, play continued 13 ... ♘xh6 14 ♙xh6 ♙xc3 15 bxc3 ♙c7 16 ♙b1 ♙c8 with about equal chances.

14	♘g7	♙xg7
15	♙b1	♙c5

The black position is more active but it is difficult for him to find a good plan.

16	♘de2	♙fc8
17	♙he1	b5
18	♘f4	

I decided to bore him into making a mistake by just playing solid waiting moves. The position is about equal, but Black is trying to win and White is positionally better as the d5 square is weak, and a ♘ planted there by White will help slow the black ♙-side attack and aid the white ♙-side play.

18	♙d8
19	♘d3	

I like this move as it gets rid of the black ♘ and allows the d-pawn to cause Black some difficulties. The open c-file can be used by White later after the black ♙s have been deflected.

19 ♖xd3
20 cxd3 b4

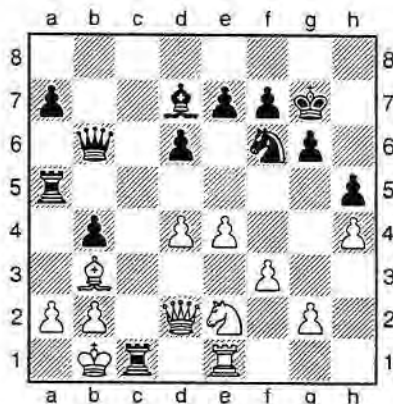
Black's last is perhaps bad as it gives me control over the white squares on the ♖-side and delays the black attack on that side of the board.

21 ♖c2 ♗b6
22 d4 ♖a5

This ♖ is badly misplaced here as will become clear later on.

23 ♖c1 ♖xc1

The exchange of ♖s is almost forced as ♖c4 by White would cause problems.



24 ♖xc1

Planning ♖d3-f4-d5.

24 ♗b8

25 e5 was threatened.

25 ♖d3 ♖b5
26 ♗a1 e5

The threat was worse than the execution as Black prevents e5.

27 ♖c4 ♖b6
28 dxe5 dxe5
29 ♖c1 ♖c6
30 ♗g5

My first direct threat!

30 ♖d7
31 g4 f6
32 ♗e3 hxg4
33 fxg4 ♗d6
34 g5 ♖b7
35 h5 gxh5
36 ♖f1 ♗f8
37 gxf6 ♖xf6
38 ♗g5 ♖xe4
39 ♖xe5 ♗e8
40 ♖b3

I like this move as there are now a number of threats which Black cannot defend against but the main problem for Black is to defend against ♖c4.

1 0

This is fairly typical of my games over the last ten years where I have played solid moves which have encouraged my opponents to try for a win in positions which are usually better for me. I do like very tactical positions but find that my opponents have gone for quiet positional games (usually).



Now for my second game, in which Fabri plays a poor opening and finds that he has a lost position early on. In fairness to Mr. Fabri, he did move from Hungary to New Zealand during this game, which possibly contributed to his loss more than my play.

XI Olympiad Final, 1993-95

White: F. Fabri (HUN), 2545
Black: D.A. Kilgour (SCO), 2490

French Advance C02

1 e4 e6
2 d4 d5
3 e5

This is the Advance Variation which results in a difficult game for Black as he is constrained by the wedge of white pawns on b2, c3, d4 and e5, but these pawns allow Black strong counter-play by c5, b5-b4 and f6. The main idea for White is to tie Black up and then start a ♗-side attack as Black often castles there. Even if Black castles on the ♖-side, he will find that White can open that side of the board by playing b4, a4, etc, or perhaps c4 in some variations. Black has to plan how to play after 3 e5, with the following choices available:-

- try to exchange white-squared ♖s as the black ♖ will not have much scope for some time.
- ♖s will be good pieces for attacking the white centre in this closed position so f5 and c6 will be good squares for the black ♖s.

- play c5 to attack the base of the pawn chain and develop the black ♗ to b6 and ♖ on c6 to build up pressure on the d-pawn.
- play c5 and ♖ to the c-file and play cxd-pawn with the plan of control of the open file.
- play f6 and try to undermine the white centre - this will often result in either the f or g-file being opened, giving Black attacking opportunities.

3 c5
4 ♖f3 ♖c6

4 ... cxd4 is fine, but I prefer the long term closed lines as, after cxd4, the position is opened and the e-pawn could become weak but White gets good attacking chances.

5 c3 ♗b6
6 a3

Black's last move stops the white black-squared ♖ moving and adds to the pressure on the d4 square. If 6 b3 cxd4 7 cxd4 ♖b4+ or 6 dxc5 ♖xc5 and Black is active. The main alternative to 6 a3 is 6 ♖e2 and Black could try the plan with the ♖s explained above.

6 c4

I played Fabri in the SCCA Magazine Tourney and tried a plan involving a5, cxd4 and f6 to clear the white centre but White managed to get a good ♗-side attack (I lost in 32 moves). White has the idea of ♗-side expansion involving b4 and a4, so c4 stops this idea for the moment.

7 ♖bd2 ♘a5
 8 g3 ♘d7
 9 h4

♘h3 or ♘g2 seem better but the idea behind h4 is to gain space on the ♔-side by h5-h6 and ♘h2-g4.

9 0-0-0
 10 ♘h3 f5

With the idea of playing ♘h6-f7, protecting d6 and threatening to further undermine e5 by g5.

11 exf6 gxf6
 12 0-0 ♘c7

Black is planning a ♔-side attack by opening the centre with e5 but first he must take control of the g-file. Black will exchange the white-squared ♘s after e5 which will help with the attack on the ♔-side but it also does weaken the black ♔.

13 ♖c1 ♖g8
 14 ♘h2

Perhaps this is part of a long-term plan but it is difficult to see it in the game as e5 opens the position and the ♘ is left at the edge of the board with no place to go. I was rather troubled at this point as I wished to play ♘g7 before e5, but e5 is now quite good as it will open the centre to Black's advantage as his pieces are better developed.

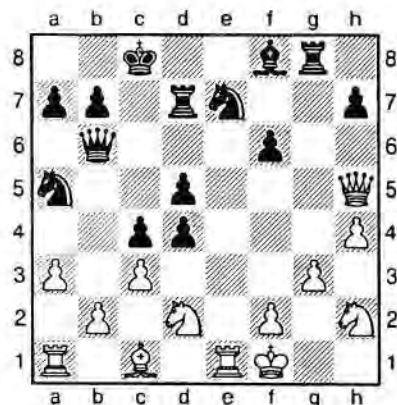
14 e5

15 ♘xd7+ ♖xd7
 16 ♗h5

Perhaps ♘h3 was better here.

16 exd4
 17 ♔f1

There were various threats due to the black ♗ being on the a7-g1 diagonal which ♔f1 stops. White really has major difficulties in developing his ♗-side pieces. Black has some advantage, especially as his plan has worked quite well and he controls the centre. White will get some ♗-side play if Black accepts the pawn and Black should strengthen the centre with ♘ac6.



17 dxc3?
 18 bxc3 d4
 19 ♖b1 ♗a6
 20 ♗xh7 dxc3
 21 ♘df3 ♘ac6

The white ♔ is still in trouble but it is amazing that the pair of black-squared ♘s still have not moved after 21 moves.

22 ♖c3 f5
 23 ♘c1 ♖d1
 24 ♔g2 ♗a4
 25 ♘hf3 c2
 26 ♖b4 ♗a6
 27 ♖c3 ♘xb4
 0 1

The black-squared ♘s never moved in this game while the ♘s played a major part in the destruction of the white centre, which is often the case in the closed variations of the French.



I would like to close this article by thanking the many people who have helped me gain the GM title, with special tributes to Michael Fallone and the late Nancy Elder, who were responsible for encouraging and training a generation of chess players in the Dundee area during the 1970s.

[David Kilgour]

READER'S LETTER

David Trenner from Glasgow writes:

"I was interested to read J W Kilgour's letter in the March issue and also your own comments.

I play correspondence chess for enjoyment, and given that we are all amateurs I assume that my opponents do likewise. This means that I would rather play an eccentric game rather than grind out a win, and if I have enjoyed the game I'm not too worried by the result. (I certainly couldn't understand an opponent in last year's Premier who insisted an adjudication when neither of us could win the section - I resigned to give him the point he was so obviously desperate for, even though I had good drawing chances).

If my opponent has to use his (or her) computer, then this is their loss not mine: my computer is only used against me, not for me!

If Andy Muir wants to set his pupils a project to analyse chess moves this is fine by me, but please don't reduce correspondence chess to a battle of the programmers. The rules presently prevent the enlisting of outside assistance, so those who use computers are only cheating themselves. Okay, they won't get caught, but they know they have cheated.

At the end of the day, it's just a game!"



Does International Correspondence chess have a future?



by Alan Borwell, Deputy President (Development) of ICCF

As our thoughts project towards the next Millenium, the uncertain future of our wonderful game is being referred to more often by chess journalists. Some observations are pure fantasy, whilst others are being expressed by those who have no real knowledge or experience of playing correspondence chess.



Whilst fax and particularly Email are likely to become increasingly popular methods of communication for playing CC, the traditional use of the international postcard will continue to be the only method available for most CC players and also the preferred one for many others. For busy people who enjoy playing CC at a more leisurely pace or collecting stamps/cards from different countries or simply the excitement of the mail dropping through the letterbox, the traditional method will continue to be attractive. There are significant differences between the options and much will depend upon personal circumstances. However, as ICCF now offers the full range of CC options, it should continue to prosper into the future.

A great deal of nonsense has been written about computer chess playing programmes being the death knell of postal chess. ICCF discourages players from using computers for playing CC but recognises that it is impossible to legislate and monitor whether or not they are being used. It is a matter for both the consciences and common sense of CC players. Any experienced CC player of reasonable strength will know that it would be folly to rely on a computer to determine moves, as well as taking away the real interest in playing our wonderful game. You only need to feed in to a computer a typically complicated/obscure kind of position which arises in CC, to realise how poor even the most advanced software programs can be. Maybe computers have an advantage against OTB players, who cannot try out variations on the board, but it is my opinion that we are many years away from an affordable chess playing program which could beat an experienced CC player rated much above 2000. Maybe I'm living in the dark ages!?

From the beginning of this year, I had the honour of being elected unanimously as Deputy President (Development) of the International Correspondence Chess Federation. According to the new ICCF Statutes and defined Executive duties, this position is responsible for ICCF development and it is also the Principal Deputy to the ICCF President. At the ICCF Congress in Norway last year, I presented a draft Development Strategy for the next 3 years, and four Working Groups were formed to consider Documents & Promotion, External Contacts, Technologies, and Planning. The Chairmen of these Groups, along with the Deputy President (Development), constitute the new Development Committee of ICCF.

There are many issues to be considered, but I will touch upon some of them in the remainder of this short article.

There is an urgent need for ICCF to stimulate greater worldwide interest in all forms of correspondence chess, i.e. by post, fax, Email etc. Correspondence chess is defined in the new ICCF Statutes as being a game of chess in which "moves are delivered by post....., or by any other form of transmission." Another useful definition could be that correspondence chess is where "playing time is measured in days, rather than hours/minutes." This provides a clearer distinction, for example, between games being played "on line" through Internet and those using Email facilities, where a quick response is not expected.

Most ICCF Tournaments now have almost 50% of players from Germany, due to the popularity of CC, a very efficient national federation and an established magazine. Whilst this is highly creditable to our German friends from a narrow perspective, it does not provide truly international competition for their players or for those from the rest of the World. It also results in delays in the formation of new European and World Tournament Groups, where a balanced mix of nationalities is desirable. Therefore, it is essential for ICCF to be more successful in attracting greater numbers of entries from other existing member countries and the wider world. For example, there are very few active international CC players from China, Japan, India, Indonesia, Philippines, South Africa, etc, all of which have large populations.

Greater support and effort is required from ICCF to help member countries to generate more interest in the game, to reach out to players in countries which currently are not ICCF members and to use all available means for promoting international CC. This should include the initiation of a truly international CC publication/magazine in English, with an Internet version, for worldwide readership.

ICCF must develop a media strategy and design and co-ordinate its policy for attracting sponsorship for its events, particularly World Championships and Olympiads.

It will be vital for ICCF to develop its range of Fax and particularly Email Tournaments as it has already been firmly established that there is a considerable demand for these forms of correspondence chess. The frustration of postal delays with various countries is probably the main reason for CC players giving up the traditional method of play. With tournaments taking more than 5 years to complete, it is understandable that progress is so slow that some players lose interest, especially if they are hoping for promotion to higher level tournaments. ICCF needs to address this problem much more actively and imaginatively and to ensure that none of its events take more than, say, 4 years to complete, with a target of 3 years. The mandatory use of fax and/or Email for players in countries with very slow postal connections, is a likely outcome, using central communication points in each country.

For its Email tournaments, ICCF has developed a simple and well-structured set of rules, together with a template for sending moves/dates. From personal experience, I can commend this form of CC, although the problems are concerned with quick, rather than slow play!

One great advantage of fax and Email play is that there is evidence of both date of receipt and sending of moves. As most CC players have experienced, the mysterious postal delays which seem to occur when positions become more difficult or complicated, are eliminated!

Looking forward..... Although ICCF has a fine pedigree of traditions and values, it is not renowned for enlightened forward planning and its Commissions have tended to be very slow moving. Few real decisions are taken mid-year and even from one annual Congress to another, there is a tendency to hold things over for further consideration. Of course, there are different "schools of thought" about decision-making, but it is hoped that ICCF will become more dynamic via its new Constitution (Statutes) and following the definition of the principal duties of its Executive Office-Bearers (who form the 10-person ICCF Presidium, which includes the 4 Zonal Directors).

A strategical and financial plan is a priority, but there are some fundamental questions which need to be considered by Congress before this can be formulated. A Development Questionnaire was issued early this year to all delegates of Member Countries and principal officials of ICCF. One purpose of the survey was to ask organisers/players what they see as priority issues for consideration. The feedback received so far has been most encouraging and a synopsis of the ideas/suggestions will be included in my Development Committee Report to the 1996 Congress. The ICCF Presidium must take notice of the views of its members/officials and initiate appropriate actions.

This year's Congress in Germany will be one of the best ever in terms of attendance and therefore presents a golden opportunity for ICCF to facilitate full discussions of key issues, as well as allowing some time to enjoy what undoubtedly will be traditional German hospitality. The ICCF motto of "Amici Sumus" (We are Friends) will live on beyond this year's Congress but we do need to find many more friends around the world to join the family!

WINNING CONTINUATIONS SOLUTIONS (from Page 19)

- A** 1 ... ♗f4+! 0:1
M. Roos (FRA)-Yu. Sakharov (UKR), corr 1960/62
- B** 1 ... g5! 2 ♗xf8 (or 2 ♗xf8+ ♖g7 and if White's ♗ moves away from the e1-e4, 3 ... ♗e1#) 2 ... ♗f5! 0:1 (with double threats 3 ... ♗xc8 or 3 ... ♗f1#)
N. Doroshenko (UKR) - N. Kovalyov (UKR), corr 1963/65
- C** 1 ♗xb4! ♗xb4 2 ♗d8+ ♖f7 3 0-0+ ♖g6 4 h4! h6 5 ♗xh8, 1:0
D. Goldberg (UKR) - V. Melnikov (BLS), corr 1964/66.
- D** 1 ♗f5+! gx5 2 ♗h8+ ♖g5 3 ♗h5+ ♖f4 4 ♗xf5#, 1:0
V. Prikhodin (UKR) - N. Kovalyov (UKR), corr 1965/67.

TOO MUCH INFORMATION = NOT ENOUGH INFORMATION

MONOGRAPHS

MAKE NEITHER THIS
NOR THAT MISTAKE



A29	Kortchnoi
A33	Sax
A34	Bellavsky, Mikhalchishin
A58-59	Karpov
A86-89	M. Gurevich
B12	Seirawan
B17	Karpov
B66	Anand
B75-76	Tiviakov
B80	Huebner
B86-87	Bellavsky, Mikhalchishin
B88	Bellavsky, Mikhalchishin
B89	Akopian
C05-06	Bareev
C18-19	Kortchnoi
C42	Yuzupov
C43	Yuzupov
C80-81	Kortchnoi
C82	Kortchnoi
C83	Kortchnoi
C89	Anand
C92-93	Romanishin, Bihovsky
C94-95	Romanishin, Bihovsky
D16-19	Ribli
D44	Bellavsky, Mikhalchishin
E97	M. Gurevich

Available in August
Chess Informant
66



Chess Informant

All Chess Informant products are now stocked by Qualitext Business Services, with 10% members/subscribers discount. Monographs cost £8.95 each, less discount and free postage.

The SCCA Grading System

[Raymond Baxter]

The system is based on that described by Graham Wood in SCCA magazine number 30 of May 1989. This itself is based on the ICCF grading system. However some changes have been made since 1989, and the notation has been altered, to agree with that used in the computer program. The following replaces Graham Wood's article.

- 1 The grading system is a numerical system in which percentage scores (scoring rates) are convertible to grade differences, and conversely grade differences are convertible to expected scores.
- 2 The basis of the system is the normal distribution of statistical probability theory.
- 3 Whilst it is possible to use conversion tables to obtain grade differences from scoring rates, and expected scores from grade differences, in practice a formula is used, as follows.

- 3.1 Define

N	number of results
A	actual points scored from N games
MA	mean actual scoring rate, equal to A/N
GD	grade difference
ES	expected score in any one game

- 3.2 Then for any known value of MA, greater than zero and less than one, we can calculate the equivalent grade difference GD, as follows

$$GD = -400 * \log(\text{base } 10)(1/MA - 1)$$

- 3.3 The following table shows GD equivalent to some examples of MA.

MA	GD	MA	GD
0.1	-382	0.55	35
0.2	-241	0.65	108
0.3	-147	0.75	191
0.4	-70	0.85	301
0.5	0	0.95	512

- 3.4 Conversely for any known value of GD, we can calculate the expected score from one game, as follows

$$ES = 1 / (1 + 10^{**}(-GD/400))$$

where $10^{**}(x)$ represents 10 raised to the power of x

- 3.5 The following table shows ES equivalent to some examples of GD.

GD	ES	GD	ES
-400	0.091	50	0.571
-300	0.151	150	0.703
-200	0.240	250	0.808
-100	0.360	350	0.882
0	0.500	450	0.930

- 4 Grades are calculated for players who have at least eight gradable results in total. Such players with less than 30 results are given 'provisional' grades, those with at least 30 results are given 'recognized' grades.
- 5 A provisional grade for a player with less than 30 results, or a recognized grade for a player with exactly 30 results, is calculated as follows.

- 5.1 Define

CN	cumulative number of results from start
CA	cumulative actual points scored
MCA	mean cumulative actual scoring rate, equal to CA/CN
CR	cumulative rating of all his opponents
MCR	mean cumulative rating, equal to CR/CN
CF	correction factor, see 5.4 below
NG	new grade, see 5.5 below

- 5.2 Provided MCA is not equal to zero or one,

$$GD = -400 * \log(\text{base } 10)(1/MCA - 1)$$
 using the formula in 3.2 above

- 5.3 If a player has lost all his games, MCA is zero and the above formula cannot be applied. Nor can this be done if he has won all his games and MCA equals one. An accurate grade cannot be calculated for such players, as we cannot tell how weak (or strong) the player really is. However an approximate grade is preferable to no grade, and in practice an adjustment is made to MCA to allow the formula to be applied. If MCA is zero, the adjusted MCA is calculated as $0.25/CN$, ie the player is given one quarter of a point. For example, this gives GD of -597 if $CN=8$, or -720 if $CN=16$. Conversely if MCA equals one, ie the player has won all his games, the adjusted MCA is calculated as $(CA - 0.25)/CN$.

- 5.4 The Correction Factor is intended to reduce the effect of a mean scoring rate substantially different from 50%. It is calculated as follows.

$$CF = 2 * MCA * (1 - MCA) + 0.5$$

5.5 The following table shows CF equivalent to some examples of MCA.

MCA	CF	MCA	CF
0.1	0.680	0.55	0.995
0.2	0.820	0.65	0.955
0.3	0.920	0.75	0.875
0.4	0.980	0.85	0.755
0.5	1.000	0.95	0.595

5.6 The player's new grade is taken as the mean opponents' rating plus the equivalent grade difference reduced by the correction factor.

$$NG = MCR + GD * CF$$

6 Where a player had obtained at least 30 results excluding the current year's results, then his new grade is calculated from his latest grade, adjusted by the difference between his actual and expected scores, using various factors, as follows.

- 6.1 Define
- | | |
|-----|---|
| PN | previous cumulative number of results |
| LG | latest grade |
| N | number of results in current year |
| R | total of opponents' ratings in current year |
| A | actual points scored in current year |
| MR | mean opponent rating, equal to R/N |
| GD | grade difference in any one game |
| ES | expected score from any one game, see 6.2 below |
| E | expected points scored in current year, the sum of all ES |
| MD | mean grade difference, equal to LG - MR |
| ME | mean expected score in current year, see 6.3 below |
| SD | standard deviation, see 6.4 below |
| Q | variation, see 6.5 below |
| SF | significance factor, see 6.6 below |
| LGC | latest grade coefficient, see 6.7 below |
| PNC | previous number coefficient, see 6.8 below |
| K | development coefficient, see 6.9 below |
| NG | new grade, see 6.10 below |

6.2 Firstly the expected score is calculated for each game, using the formula in 3.4 above, as follows.

$$ES = 1 / (1 + 10^{**}(-GD/400))$$

and E is obtained by summing ES over all games in the current year

6.3 Secondly the mean expected score ME is calculated similarly

$$ME = 1 / (1 + 10^{**}(-MD/400))$$

6.4 The standard deviation of ME is calculated as

$$SD = \text{square root of } (N * ME * (1 - ME))$$

6.5 $Q =$ the absolute value of $(A - E) / SD$

6.6 The significance factor SF is obtained as follows

$$\begin{aligned} \text{if } Q < 1 & \quad SF = 1 \\ \text{if } Q > 2 & \quad SF = 1.5 \\ \text{otherwise} & \quad SF = (Q + 1) / 2 \end{aligned}$$

6.7 The latest grade coefficient LGC is obtained as follows

$$\begin{aligned} \text{if } LG < 2000 & \quad LGC = 20 \\ \text{if } LG > 2400 & \quad LGC = 10 \\ \text{otherwise} & \quad LGC = 70 - LG/40 \end{aligned}$$

6.8 The previous number coefficient PNC is obtained as follows

$$\begin{aligned} \text{if } PN > 80 & \quad PNC = 1.00 \\ \text{otherwise} & \quad PNC = 1.4 - PN/200 \end{aligned}$$

Since PN is at least 30, PNC has a maximum value of 1.25.

6.9 The development coefficient K equals LGC * PNC

6.10 The new grade equals the latest grade, plus the difference between actual and expected score multiplied by the significance factor times the development coefficient.

$$NG = LG + SF * K * (A - E)$$

6.11 SF * K can vary from a minimum of 10 for a highly graded player with many previous results whose current results are not significantly different from expected, to 37.5 for a lower graded player with few past results, who is now playing at a significantly different level from his previous performance.

6.12 Where a player has a large number of results in the current year, and his actual score is substantially different from his expected score, then the automatic application of the above formulae can produce anomalous results. It may be necessary to restrict any rise in a player's grade so that his new grade does not exceed the provisional grade which would have been calculated from the current year's results alone, using the formula in para 5 above. In practice, because this formula is approximate, a tolerance of up to 20 points above this grade is permitted.

- 6.13 Conversely, if a player's score is significantly worse than expected, it may be necessary to restrict the fall in his grade similarly.
- 7 Where a player had less than 30 results previously, and now has more than 30 results, a combination of the calculations in paras 5 and 6 is used.
- 7.1 The current year's results are split into two batches, the first batch comprising sufficient results to bring the total up to 30, and the second batch being the remainder. Each result, both actual and expected, is split proportionately between the two batches.
- 7.2 Using the first batch of results, a provisional grade based on 30 results is calculated as in para 5.
- 7.3 Then starting with a latest grade equal to the provisional grade calculated in 7.2, and using the second batch of results, the calculations of para 6 are applied.
- 8 The question is sometimes asked, as to whether a highly graded player can suffer a reduction in his grade by playing an opponent with a much lower grade, even if the highly graded player wins. The answer depends on whether the player has a recognized grade, ie he has had at least 30 results, or whether he has only a provisional grade, ie less than 30 results.
- 8.1 The formula in 6.2 above for ES always gives an expected score greater than zero and less than one for any one game, no matter how large the difference in grade. It therefore follows that winning a game cannot reduce a recognized grade no matter how low the grade of the opponent. Neither can a loss increase a recognized grade, no matter how highly graded the opponent.
- 8.2 However for a player with a provisional grade, using the average grade of all his opponents is an approximation. Including an opponent with a much lower grade in this average could more than offset the inclusion of another win in the average score. It is therefore possible that a player's provisional grade could be adversely affected by a win against such an opponent. Conversely losing to a very highly graded opponent could increase a provisional grade. There is no simple method of preventing this, and it is unlikely to happen often.
- 9 The rating period runs from 1 January to 31 December. All games completed in this period in SCCA tournaments (except the Openings tournament) are available for inclusion. So also are international matches published in the SCCA magazine, provided the opponent's rating is known.

- 10 If a player withdraws from a tournament giving a fully satisfactory reason for such withdrawal, eg serious ill health or significant change of job, then his games will not be graded. However if an individual opponent claims that he had a substantial advantage on the board, the grading officer may decide to grade such a game. If a player withdraws without giving a satisfactory reason, his games are graded as losses for him and wins for his opponents.
- 11 Grades will be calculated and published for any player who has eight or more results against players who already have grades, or against players for whom estimated grades can be obtained.
- 12 Three attempts are made to estimate grades for ungraded players, so that results against such players may be taken into account. Firstly it may be possible to estimate a grade by using his over-the-board SCA grade. Secondly if a player has four or more results against players with actual or estimated grades, and these results are not all wins and not all losses, or a player has eight or more results against such players irrespective of score, an estimated grade will be calculated using the formula in para 5. Thirdly the second attempt is repeated, but using the results of the second attempt in preference to those of the first attempt.
- 13 The actual grading calculations are then done, taking account of all results against previously graded players, or against players with estimated grades.
- 14 The new grades will usually be published in the July magazine. They will come into force for all games with a starting date in that calendar year. This is a change in procedure which was implemented in 1993. Previously the new grades applied only to games which started in the 12 months following 1 July. Since most SCCA tournaments begin in January, the old rule meant that most grades were at least a year out of date before they were used. The 1993 change means that the new grades are brought into force as soon as possible.
- 15 The opponent's grade for any one result is selected by the following rules in order of preference.
- The opponent's grade in force for the calendar year in which the game started.
 - If the opponent was ungraded in the year the game started, but subsequently obtained a grade, then the earliest such grade is used.
 - If the opponent remains ungraded, but it is now possible to estimate a grade for him as per para 12, then the estimated grade is used.
- 16 When calculating expected scores for players with over 30 results, the player's own grade is needed. This is selected using similar rules as for the opponent's grade.
- 17 All grades are rounded to the nearer multiple of five.

- 18 Players are considered inactive if they have no gradable results in a calendar year.
- 19 Inactive players continue to be shown in three grading lists after being considered inactive.
- 20 Players who appeared in earlier lists but have been deleted from recent lists because they have been inactive, nevertheless retain their previously published grades.
- 21 If a player has been inactive for six or more years, and starts to play again, his new grade is calculated as above, but if he has more than 30 results in total, the significance factor (SF) is taken as 1.5 in all cases.
- 22 Players who obtain an ICCF grade cease to be graded by the SCCA grading officer for as long as they continue to have an ICCF grade. For grading their opponents in SCCA tournaments, the appropriate ICCF grade is used.
- 23 The SCCA passes results of certain SCCA tournaments to the ICCF, so that they may be taken into account in the ICCF grading calculations. These tournaments currently include the Scottish Championship, the Candidates tournament, the final of the Scottish Open, and division one of the League. Results in these tournaments are also taken account of in the SCCA grading calculations, in so far as they affect the grades of players without ICCF grades.

British Junior Correspondence Chess Championship (BJCCC)

A prize of £50 awaits the winner of the British Junior Correspondence Chess Championship, which starts on October 30th and is open to any resident of the British Isles (except the Irish Republic) who will be under 18 on that date. No membership qualification is required.

Entrants will be divided into all-play-all sections, with one game against each of the other players in their section. The winner of each section goes forward without further entry fee to compete for the Championship in a second all-play-all round.

The winner holds the Championship title and a silver trophy until the next Final is decided. In addition to the Champion's prize of £50, the runner-up in the Final receives £25, and there are smaller cash prizes for the winner and runner-up of each Round 1 section.

The entry fee is £4 (cheques or postal orders payable to BPCF) and entries, stating name, address and date of birth, should be sent to the Tournament Secretary, Duncan Chambers, 87 Duncan Road, Sheffield, S10 1SN, by October 15th 1996.

SCCA Grading List 1996

by Raymond Baxter

The grades shown in this list take account of all games reported to the grading officer by 31/12/95. They will be used for any games starting in 1996. All SCCA events listed in the magazine are included, except the Openings tournament. Friendly internationals are also included if the opponent's rating is known. Where players have an ICCF grade in the ICCF list of 1/7/96, then this grade is shown, marked "i". Provisional grades (ie less than 30 results) are denoted with an asterisk.

The list now shows the membership number for those players who are (or have recently been) members of the SCCA. It also shows the cumulative total number of results which have been included in the calculation of the grade.

For those who are interested in the technicalities, this magazine also contains a description of the current grading system. Any members who wish to see details of their own SCCA grade calculations should let me know, and I will send them the relevant computer printouts.

No	Name	Results	Grade	No	Name	Results	Grade
004	I Aird	20	2340*i	273	I Burgoyne	14	1575*
LM18	GM Anderson	18	1565*		AB Burnett	10	1955*
121	J Anderson	45	1870	101	RJ Burridge	78	1570
151	F Andres	48	1265	040	JS Cairney	67	1665
244	AR Angus	29	1910*	103	W Cameron	38	1555
049	A Armstrong	20	2145*i	096	AWI Campbell	35	1810
016	EA Bailey	54	1795	038	IS Campbell	122	2135 i
015	RWM Baxter	25	2305*i	104	PJ Carroll	18	1390*
155	R Beacon	205	1790		P Cassar	12	1855*
LM11	CR Beecham	147	2165 i	108	J Cassidy	104	1470
100	J Bell	8	1350*		MM Chalmers	8	1450*
022	AGE Bird	65	1735		SL Clark	44	1850
LM20	GH Bird	36	2105 i	252	JA Clayton	15	1925*
041	JG Blencowe	68	1730	105	R Cochrane	20	1550*
LM09	AP Borwell	270	2365 i		P Coffield	60	1835
LM87	CF Boyle	65	2200 i	LM85	S Collins	13	1775*
LM82	S Brady	44	1815	173	WM Cook	29	1835*
215	AC Brown	46	1800	204	J Copley	23	1910*
LM16	DM Bryson	152	2545 i	247	WH Cormack	22	1515*

No	Name	Results	Grade	No	Name	Results	Grade
107	D Cosgrove	32	1455	LM10	AT Hislop	104	2200 i
LM27	TJ Craig	115	2330 i		MD Hood	10	1475*
LM19	D Crichton	88	1745	115	DA Hughson	16	1950*
233	RB Crosbie	51	1625	171	W Hulme	21	2280*i
166	DR Cumming	166	1765	268	W Hynd	8	1660*
					Mrs M Inglis	30	2165 i
LM36	R Dickson	255	1740		RA Inglis	30	2295 i
	C Donkin	32	1600				
139	NA Down	60	2215	LM15	JPE Jack	138	1700
185	R Dowson	42	1685	312	CR James	9	1570*
134	MH Dunn	70	1795	255	IM Jamieson	14	1940*
030	MT Dyer	44	2190 i	LM14	DM Jenkins	59	2280 i
					TG Johnston	25	2185*i
LM55	J Eadie	28	1420*		B Keenan	22	1665*
106	RG Ebdon	24	1490*	LM77	AD Kilgariff	57	1685
183	DRR Ellis	21	1880*	LM48	DA Kilgour	148	2580 i
				257	JW Kilgour	10	1495*
110	JN Falconer	40	1690	021	R Kilpatrick	45	2215 i
111	A Feinstein	16	2010*	274	DL Kleppang	9	1840*
284	JA Findlay	19	1985*	260	A Knox	12	1470*
340	D. Finnie	20	2460*i	256	CJ Lennox	10	2175*
219	MP Ford	14	1595*	249	J Lewis	25	1690*
				LM37	DM Livie	61	2305 i
	DA Gibb	25	1715*	LM03	GWG Livie	54	2175 i
112	DV Gibbs	26	1505*	264	G Lloyd	71	1610
086	SR Gillam	88	2360 i		G Lyburn	10	1720*
LM51	PM Giulian	300	2450 i	261	TF McAinsh	20	1565*
LM86	Mrs RA Giulian		*i	LM41	KB McAlpine	34	2535 i
124	B Goodwin	55	1715	259	J McCahey	10	1845*
051	K Gordon	122	1700	LM81	P McConnell	15	1695*
LM76	BW Grant	45	1540	212	P McCrea	23	1665*
	WM Grant	16	1590*	148	NR McEwan	30	1570
113	KJ Grose	26	1390*	LM05	ME McGhee	44	1740
245	KJ Guthrie	23	1650*	196	Mrs S MacGilchrist	21	2110*i
				LM84	CA Macgregor	85	1340
102	F Hall	113	1510	164	CC McKay	56	2095
299	M Harkins	22	1790*	172	SG Mackenzie	25	1715*
039	W Harper	81	1675	LM32	IA Mackintosh	43	2170 i
LM56	Mrs EA Hartford		i	200	G McKnight	9	1640*
063	D Harvey	26	2315*i		J McLean	8	2090*
248	J Henderson	19	1865*				
014	JM Herries	159	1675				
114	SH Hilton	90	1480				
116	A Hind	22	2130*i				

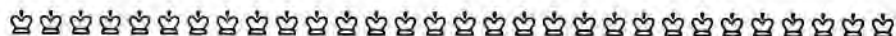
No	Name	Results	Grade	No	Name	Results	Grade
081	MJ MacLeod	80	1775	136	IF Reeman	32	2015*i
043	J McMenemy	140	1500	LM75	DR Reid	34	1940
216	AN MacMillen	28	1870*	280	Mrs C Riley	14	1610*
287	Ms AL McMonigle	26	1520*	254	S Riley	45	1710
LM17	T McMorran	151	1835	LM13	WS Roach	73	1840
001	CA McNab	79	2510i	293	A Roberts	27	1785*
193	A MacQueen	66	1770	224	MP Roberts	27	1965*
191	MC McQueen	8	1615*	084	FR Ross	45	1390
LM02	DG McRoberts	20	2055*i	125	W Rutherford	22	1965*
LM52	J McTaggart	32	1690				
				132	D Salter	68	1785
LM38	IA Marks	97	2165i	LM22	DJ Savage	24	2050*i
LM66	IH Marshall		i	265	B Setchell	8	1310*
	BJ Martin	79	2285i	LM24	J Seyfried	35	2290i
275	A Matusavage	11	1690*	094	K Seyfried	54	1815
083	A Maxwell	56	1805	285	J Shaw	9	2185*
199	M May	50	1795	057	I Sneddon	202	1595
178	B Milligan	97	1545	LM65	GR Sprott	63	2275i
LM78	IWS Mitchell	73	1570	126	AG Stalker	14	1755*
117	M Mitchell	51	2170	127	J Stallard	40	1425
118	SR Mitchell	31	1570		L Stephenson	38	1620
333	RS Montgomery	18	1735*		F Stevenson	8	1660*
LM68	GA Morton	22	2300*i		JAB Stevenson	63	2260i
LM71	AJ Muir	40	2630i	294	DJ Stewart	52	2380i
LM64	JS Murray	40	1830	LM46	KWC Stewart	36	2220i
234	SA Murray	12	870*	128	RW Stokes	37	1675
				097	A Swann	89	1785
202	D Neil	50	1950	LM74	MA Swystun	102	1945
296	W Neill	12	1675*				
147	A Nisbet	39	1880		P Tait	8	1445*
225	AC Norris	27	1800*		T Tait	16	1885*
LM69	AJ Norris		i		TN Talbot	14	1680*
				LM29	A Taylor	20	1565*
119	JR Parker	28	1685*	130	J Taylor	104	1400
120	MF Pearce	47	1675	LM30	TAH Taylor	20	1515*
122	R Pells	56	1410		WD Taylor	14	2065*
123	DW Penman	44	1610	131	E Thompson	22	1785*
315	AR Petrie	17	1385*	168	AC Thomson	28	1565*
229	G Plant	36	1705	LM79	T Thomson	83	2235i
258	TW Pollock	16	1505*	270	D Trenner	19	1665*
048	GD Pyrich	313	2375i	129	RF Turner	99	2015

No	Name	Results	Grade	No	Name	Results	Grade
032	GE Wallwork	75	2070	LM49	AR Wilson	27	1605*
LM80	J Watson	28	2500*i	278	B Wood	16	1535*
209	JE Weir	18	1735*	007	G Wood	30	2140i
	IP Whittaker	30	1795	149	A Wright	74	1820
LM57	TS Wickens	147	2330i	065	SM Young	97	1720



ICCF - TOP OF THE LIST - 1/7/96

1	TIMMERMAN, GJ	GM NLD	2725 (100)	29	BINHAM, T	IM FIN	2625 (32)
2	PENROSE, Dr J	GM ENG	2710 (70)		KOROLIEV, SI	GM RUS	2625 (63)
3	UMANSKY, MM	GM RUS	2700 (61)		MELEGHEGYI, C	GM HUN	2625 (106)
	NEUMANN, J	IM GER	2700 (29)		KREUZER, M	IM GER	2630 (40)
5	SANTOS, LMCP	IM POR	2680 (53)		KOKKILA, T	IM FIN	2625 (39)
6	BANG, EBH	GM DEN	2675 (121)		GOTTARDI, G	IM SWZ	2625 (110)
7	POPOV, Dr GA	GM BLG	2670 (30)		HERTEL, P	IM GER	2625 (56)
8	JARKOV, VV	RUS	2665 (41)	35	VINJE, A	NOR	2620 (46)
9	ELWERT, H-M	IM GER	2655 (117)		FRIES-NIELSEN, NJ	IM DEN	2620 (68)
	OOSTEROM, JJ v	GM NLD	2655 (100)		VARGA, L	HUN	2620 (32)
	WEBB, S	GM ENG	2655 (113)		FRIES-NIELSEN, JO	DEN	2620 (38)
12	HÄSSLER, W	IM GER	2650 (35)		NORMANTAS, VP	IM LIT	2620 (107)
	KUJALA, A	GM FIN	2650 (41)		LINDGREN, M	IM SVE	2620 (59)
14	BARASH, DF	GM RUS	2645 (50)	41	TARNOWIECKI, H	IM OST	2615 (103)
	GEET, Dr DDv	GM NLD	2645 (38)		HECTOR, J	IMsve	2615 (13)
	JOFFE, M	IM SVE	2645 (32)		MIKHAILOV, AI	GM RUS	2615 (132)
17	HÜRTER, H	IM GER	2640 (48)		ZELINSKIS, J	ISL	2615 (102)
	KHLUSEVICH, SO	RUS	2640 (52)		KREUZER, Dr.M	GM GER	2615 (49)
19	AL-THANI, MBK	QTR	2635 (34)		SLOTH, J	GM DEN	2615 (85)
	CHASIN, AY	GM RUS	2635 (142)	47	METZ, WR	IM GER	2610 (35)
	TSEITLIN, MS	GM RUS	2635 (28)		VOLCHOK, A	GM UKR	2610 (182)
22	BACHMANN, A	GER	2630 (37)		ZILBERBERG, AS	GM USA	2610 (90)
	KRAFT, Dr K-H	IM GER	2630 (32)		DEUEL, AY	IM RUS	2610 (60)
	ANTON, V-M	GM GER	2630 (188)	51	AIRAS, O	IM FIN	2605 (28)
	KOFIDIS, S	IM GRE	2630 (34)		EKEBJAERG, OC	GM DEN	2605 (225)
	MUIR, AJ	GM SCO	2630 (40)		STERN, D	GM GER	2605 (140)
	JOHNSON, MW	IM ENG	2630 (112)				
	MATLAK, M	POL	2630 (30)				



SCOTTISH CCA - TOP 20 (* denotes provisional ratings - less than 30 results)

1	MUIR, AJ	GM	2630 (40)	11	BORWELL, AP	IM	2365 (270)
2	KILGOUR, DA	(GM)	2580 (148)	12	GILLAM, SR		2360 (88)
3	BRYSON, DM	GM	2545 (152)	13	AIRD, I		2340* (20)
4	McALPINE, KB	IM	2535 (34)	14	WICKENS, TS	IM	2330 (147)
5	McNAB, Dr CA	IM	2510 (79)		CRAIG, TS		2330 (115)
6	WATSON, J		2500* (28)	16	HARVEY, D		2315* (26)
7	FINNIE, DS		2460* (20)	17	BAXTER, RWM		2305* (25)
8	GIULIAN, PM	IM	2450 (300)		LIVIE, DM		2305 (61)
9	STEWART, DJ		2380 (52)	19	MORTON, GA		2300 (22)
10	PYRICH, GD	IM	2375 (313)	20	INGLIS, RA		2295 (30)

GAMES SECTION



Selected by
GAMES EDITOR
 George D. Pyrich,
 53 Dunnikier Road,
 Kirkcaldy,
 Fife, KY1 2RL.

Please send games (preferably annotated) to Games Editor:

George Pyrich,
 53 Dunnikier Road,
 Kirkcaldy,
 Fife, KY1 2RL.

6 ♖h3 ♜a6
 7 ♖b5!

What's this? I don't usually play this opening and was blindly following a game Kovalev-Vaganian which went 7 ♜xa6 ♖xa6 8 ♖f4 ♖b4 9 ♗e2 ♖e7=. A hurried look at the opening books showed that after 7 ♖b5, Black played 7 ... ♗d7 8 a4 ♖e7 9 ♖f4 ♖g6 10 ♖h5 ♖g8 11 ♜h6 +- , Tal-Karner, USSR, 1979.

7 ♗d7
 8 a4 ♖b7
 9 ♜f4?!

This can't be correct, taking away the f4 square from the ♖. Better 9 ♜e3.

We start this time with a sharp tactical duel annotated by Phil Giulian.

World Ch. XX Semi-Final, 1993

White: U. Kampfshenkel (GER)
Black: P.M. Giulian (SCO)

French - Winawer C16

1 e4 e6
 2 d4 d5
 3 ♖c3 ♜b4
 4 e5 b6?!

I have come to the conclusion that 4 ♗d7 is more accurate so that 5 ♗g4 can be met by f5.

5 ♗g4 ♜f8

9 a6
 10 ♖c3 ♜c6
 11 0-0-0 ♖ge7
 12 ♜e3 h5
 13 ♗f3 ♜f5

14 ♖f4 g6
15 g3?!

Better to occupy the g5 square, perhaps by 15 ♖h3 then ♖g5, or support the d4 square and then play ♗g5.

15 0-0-0
16 ♗h3?



16 ♗xc5!
17 dxc5 d4
18 ♖e2 ♗b4!

Black has to be careful! If 18 ... ♗xh1?? then 19 ♖xh1 dxc3 20 ♖xa6+ ♖b8 21 ♗g2 c6 22 ♖xb6 +-.

19 ♗fd5!?

I felt that White had a number of other possibilities: 19 ♖he1 ♗xc3 20 bxc3 ♖xa4 21 cxd4 (21 ♗xd4 ♗xd4 transposes, although Black can also try 21 ... c5; 21 ♗xf5?? allows dxc3-+) 21... ♗xd4 22 ♖xd4

♖a1+ 23 ♗d2 ♖xd4+ 24 ♗xd4 ♖xd4+, with attacking chances and 2 pawns for the piece; 19 ♗xf5 ♗xc3 20 ♗h3 ♖xa4! and Black has too many threats; 19 ♗a2 ♖xa4 20 ♗xb4 dxe3 21 c3 ♗xh1-+

19 ♗xc3
20 ♗xc3 ♗xe3
21 fxe3 ♗xh1
22 ♖xa6+

22 ♖xh1 dxc3 23 ♖xa6+ ♖b8
24 ♗g2 ♖d2+ 25 ♖b1 ♖xg2 -+.

22 ♗b7
23 ♖a7 dxc3
24 ♖xd7 ♖xd7

Better than 24 ... cxb2+ 25 ♖xb2 ♖xd7 when White may still have some chances with 26 ♗f1 Δ♗a6 and a5.

25 bxc3 ♖hd8
26 a5 ♖d1+
27 ♖b2 ♖8d5!
28 axb6 ♖b5+
29 ♖a2 ♗d5+

In view of 30 ♖a3 ♖a1#, White resigned.

0 1

♖♖♖♖♖

Regular contributor, Joe Watson, annotates a win from Scotland's friendly international against Portugal.

Scotland-Portugal Friendly Int., 1992

White: J. Watson (SCO)

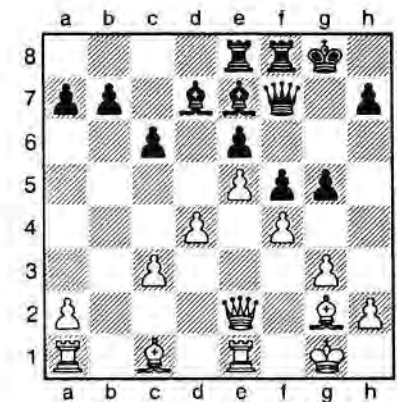
Black: E. Louro (POR)

Dutch Defence A97

1 d4 f5
2 c4 ♗f6
3 ♗f3 e6
4 g3 ♗e7
5 ♗g2 0-0
6 0-0 d6
7 ♗c3 ♖c8
8 ♖e1 d5?!
9 ♗e5 c6
10 f3 ♗bd7
11 ♗xd7 ♗xd7
12 cxd5 ♗xd5

12 ... exd5 13 ♖b3 b6 14 e4 fxc4 15 fxe4 ± is no better.

13 e4 ♗xc3
14 bxc3 ♖f7
15 ♖c2 ♖ae8
16 e5 g5
17 f4



17 g4

♖17 ... gxf4 18 gxf4 ♖h8 19 ♖b1 ♗c8 20 c4 ♖g8 ±.

18 a4 h5
19 ♗a3 ♗xa3
20 ♖xa3 ♖e7

♖20 ... ♖d8 21 ♖b3 ♗c8 22 ♖d1 ♖c7 23 c4 ±.

21 ♖b3 ♗c8
22 a5

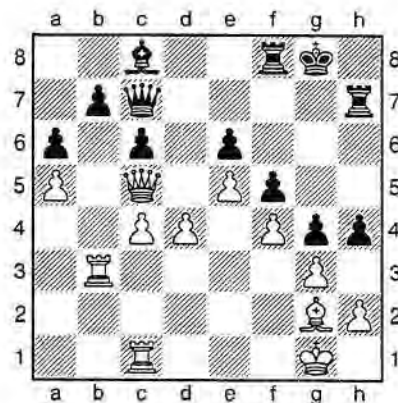
Taking the direct route with 22 c4 might have been better; 22 ... h4 (♖22 ... ♖d8 23 ♖d1±) 23 h3 (23 gxf4 ♖xh4 24 d5 exd5 25 cxd5 c5 26 d6±) 23 ... c5 24 gxf4 ♖xh4 25 d5 gxf3 26 ♖xh3 ♖xf4 27 ♖h5 +-.

22 ♖c7
23 ♖a1 ♖e7
24 ♖c4 a6

24 ... ♖f7 25 ♖c5.

Please send games (preferably annotated) to Games Editor:
George Pyrich,
53 Dunnikier Road,
Kirkcaldy,
Fife, KY1 2RL.

25 ♔c5 ♚h7
 26 c4 h4
 27 ♚c1



Now the d4-d5 break can't be prevented.

27 ♚d8
 28 d5 hxg3
 29 hxg3 cxd5
 30 cxd5 ♔f7

No better was 30 ... ♔xc5+ 31 ♚xc5 exd5 32 ♚xd5+ ♚f8. And Black is being crushed after 33 ♚bc3.

31 ♔xc8!

Black is busted after 31 ... ♚xc8 32 ♚xc8+ ♚g7 33 dxc6.

1 0

♔♔♔♔♔

In our Friendly International against Canada, our opponents have one of the famous "elder statesmen" of CC on top board. Here is one of his recent games which he has annotated for us.

Olympiad XII, Prelims, Sect. 1, Bd 1, 1992/5

White: Z.L. Sarosy (CAN)
 Black: I. Bern (NOR)

English Irregular A13

1 ♚f3 e6
 2 c4 d5
 3 b3 ♚e7!?

This unusual move takes me to unknown territory. I am on my own now.

4 ♚b2 ♚f6
 5 ♚c3 dxc4
 6 bxc4 c5
 7 g3 b6
 8 ♚g2 ♚b7
 9 0-0 ♚e7
 10 ♔c2 ♔d7
 11 d4!

With this temporary pawn sacrifice, I make an attempt to stamp Black's 4th move as inaccurate. After the game, my opponent called it a "strong novelty". Thus I must assume that the variation up to here must have been played before.

11 cxd4

12 ♚e4 ♚xc4

Or 12 ... ♚bc6 13 ♚ad1 ♚b4 14 ♚xf6+ gxf6 15 ♔d2 ♚a6 16 e3 ♚d8 17 exd4 and White gets back his pawn with a better position. The move 12 ... e5 was also a possibility that had to be examined. It could be followed by 13 ♚xf6+ gxf6 14 e3! dxe3 15 ♚ad1 e2 16 ♔xe2 ♔c7 17 ♚xc5 ♚xg2 18 ♚fe1! ♚h3 (18 ... ♚b7? 19 ♚d7) 19 ♔f3 with undefendable threats, or 15 ... exf2+ 16 ♔xf2 ♔c6 17 ♚h4 ♔c7 18 ♚xb7 ♔xb7 19 ♔xf6 ♚f8 20 ♚f5 threatening ♚d6+ (20 ... ♚xf5?? 21 ♚d8#). And if Black does not take the e3 pawn but plays instead 14 ... ♚bc6 then 15 exd4 exd4 16 ♚ad1 0-0-0 17 ♚xd4, leaving him with a position not too desirable.

Less appealing is 12 ... ♚bc6 13 ♚ad1 ♚b4 14 ♚xf6+ gxf6 15 ♔d2 ♚a6 16 e3 ♚d8 17 exd4 and White has his pawn back: also Black's ♚-side is quite weak.

13 ♔xe4 ♚bc6
 14 ♚xd4 0-0
 15 ♚xf6 gxf6
 16 ♔f4 ♚g7
 17 ♚fd1 ♔e8?

A difficult decision for Black to make!Which road should his ♔ takeleft or right? I expected 17 ... ♔c8 and still think it would have been the better choice. Black perhaps wishes to remove his QR from the aim of White's powerful KB but this way his KR will remain out of play for quite a while.

18 ♚d2! ♚g6

Not good is 18 ... ♔b8? because of 19 ♔g4+ ♚h8 20 ♚e4 f5 21 ♔h4 fxe4 22 ♚xe4 f5 23 ♚xc6 ♚xc6 24 ♚d7 and White wins; or 18 ... ♚d8? 19 ♚e4 ♚xd1+ 20 ♚xd1 f5 21 ♔g5+ ♚g6 22 ♚f6 ♔e7 23 ♚h5+ ♚h8 24 ♔h6 and the double threat 25 ♔g7# or 25 ♚xc6 wins for White.

19 ♔d6 ♚ge5

By provoking White's following move, Black seeks for his pieces more open waters and hopes for counterplay in White's loosened up position.

20 f4 ♚d8
 21 ♔a3 ♚g6
 22 ♔c3 ♚d4
 23 ♚f2 c5
 24 e3 ♚c6

Upon 24 ... ♚f5 White could consider 24 ♚d5, ♚f3 or ♚e4.

25 c5!

By this temporary pawn sacrifice, White wants either to get rid of his isolated pawn and establish a strong bridgehead with his ♚ on c5, restricting the movements of the black pieces, or, in case of 25 ... b5?!, have an advanced passed pawn.

25 bxc5
 26 ♚e4 ♚ce7

26 ... ♖xd1 27 ♖xd1 ♖e6? fails because of 28 ♖xc5 ♗xa2+ 29 ♖d2 ♗a5 30 ♗xa5 ♖xa5 31 ♖d7 (threatening ♖e6+) ♖b8 32 ♖d5 ♖b2+ 33 ♖f3 and White threatens ♖xf7+ and also ♖xa7 with the capture of ♖a5.

27 ♖xc5 h5
28 ♗a5 ♖f5

Upon the immediate exchange of the ♖s: 28 ... ♖xd1 29 ♖xd1 ♖f5 30 ♖e4! ♖xe3?! 31 ♖xe3 exf4+ 32 gxf4 f5 33 ♗xa7 fxe4 34 ♖d7 ♖h8 35 ♗d4+ with decisive advantage for White, or 30 ... ♖ge7 31 ♖d7 ♗b8 32 ♖b7 ♗d8 33 ♗c3 ♖d5? 34 ♗b3, threatening ♖xd5, e4 and ♖e6+, and White is better, winning the a7 pawn.

29 ♖e4



29 ♖h6

If 29 ... ♖d6 30 ♖d5 ♗b5 31 ♗xa7 ♗b2+ 32 ♖g1 ♖g8 (♖e6+ was threatening) 33 ♖ab1 ♗e2 34 ♖d7 ♖xd7 35 ♗xd7 ♗xe3+ 36 ♖h1, with White's great advantage.

An interesting continuation was:- 29 ... ♖xe3 30 ♖xe3 ♖xd1 31 ♖xd1 exf4+ 32 gxf4 f5 33 ♗xa7 fxe4 34 ♖d7 ♖h8 35 ♗d4+ and White is much better, or 31 ... f5 32 fxe5 fxe4! (32 ... ♖xe5 33 ♗c3 f6 34 ♖xf5 ♖g4+ 35 ♖f4 ♗b8+ 36 ♖f3 ♖xh2+ 37 ♖g2 wins, or 32 ... ♗xe5 33 ♖d5 ♗e7 34 ♖xf5 wins) 33 ♖d7 ♖h8 34 ♗xa7 ♖xe5 35 ♗d4 f6 36 ♖xe5 ♗xe5 37 ♗xe5 fxe5 38 ♖xe4 ♖a8 39 ♖d7+ ♖g6 40 ♖d6+ ♖h7 41 ♖d2, or 40 ... ♖f7 41 ♖d2 but the endgame will not be easy for Black.

30 ♗xa7!

Before taking this pawn I had to examine very carefully Black's possible response 30 ... ♗b5?? which threatens to break into White's rear lines via b2 supported by ♖g4. It would lead too far showing the immense number of variations. Only one move I could find that seems to maintain White's winning chances and that was 31 ♖f3! Let us see Black's possible replies:- 31 ... ♖xd1 32 ♖xd1 ♗b2+ 33 ♖g1 ♖g4 34 ♖xg4 hxg4 35 ♖e6+ ♖g8 36 ♖xf8 ♗e2 37 ♖f1 ♖xf8 (37 ... exf4 38 ♖xg6 f3 39 ♖f4). Or 32 ... exf4 33 gxf4 ♖c8 34 ♖e6+ ♖g8 35 ♖d4 ♗b2+ 36 ♖g1 ♖c1 37 ♖xh5 ♖xd1+ 38 ♖xd1 ♗c1

(38 ... ♗b1 39 ♗a8+ ♖h7 40 ♗a4 ♖g4 41 ♗c2 ♗a1 42 ♖f5 wins) 39 ♗a8+ ♖g7 40 ♗f3 wins.

30 ♖xd1
31 ♖xd1 ♖g4+
32 ♖c1!

The only good retreat for the ♖.

32 exf4
34 exf4! ♖h6

White was threatening 34 ♖d8 ♗e7 35 ♖d7 ♗e8 36 f5 ♖ge5 37 ♖d8 ♖f3+ 38 ♖c2 ♖g1+ 37 ♖f1 winning.

34 h3 ♖c3
35 ♖d3 ♖c4

Better than 35 ... ♖c2+ 36 ♖d2 ♖b4 37 ♖d6 ♗b5 38 ♗b6! (37 f5 ♖xa2) 38 ... ♗f1 (38 ... ♗xb6 39 ♖xb6 ♖xa2? 40 ♖b2 ♖d8+ 41 ♖d3 h4 42 f5 ♖e5 43 ♖xa2 hxg3 44 ♖c3 wins) 39 ♗xb4 ♗f2+ 40 ♖d1 ♗xg3 41 ♗d2 ♖xf4 42 ♖xf6+, or 41 ... ♗xf4 42 fxg6 and White wins.

36 ♗a6 f5
37 ♗xc4 fxe4
38 ♖d5!

So that 38 ... ♗c8 can be met by 39 f5 (39 ... ♖e7 40 ♖d6+ followed by g4).

38 f5
39 ♖d7 ♖f7
40 ♗c6 ♖g7
41 ♖d6 ♖c7

42 ♗c3+ ♖h6
43 ♖e5 ♖e6
44 ♖d8! Resigns

44 ... ♗e7 45 ♖d7 ♗e8 46 ♖f7+ ♖h7 47 ♖g5+ ♖h6 48 ♖h7#, or 45 ... ♖xe5 46 ♖xe7 ♖xe7 47 ♗f6 and White's material advantage is decisive.

♗♗♗♗♗

Here is one of the games from the Canada v Scotland Friendly International (1993-6) annotated by Alan.

White: Zoltan L. Sarosy (CAN) 2420
Black: Alan P. Borwell (SCO) 2325

English : Hedgehog Variation A30

1 ♖f3 c5
2 c4 ♖f6
3 g3 b6

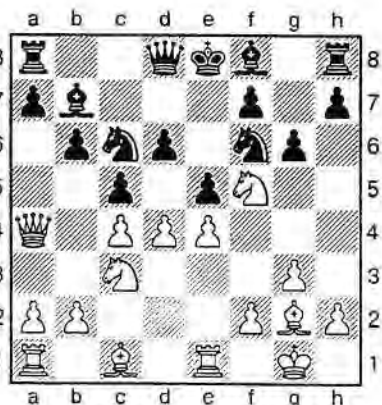
Normally, I do not use fianchetto variations but playing "symmetrical" positions is even less attractive!

4 ♖g2 ♖b7
5 0-0 e6
6 ♖c3 ♖e7
7 ♖e1 d6
8 e4 e5
9 ♖h4

The main alternative here is 9 d3 when after 9 ... 0-0 10 ♖h4 ♖c6 11 ♖f5 ♖d4 12 f4 ♖e8 13 ♖xe7+ ♗xe7 14 f5 gives White attacking chances as in Illescas-Ulybin, 1992.

9 ♖c6
 10 ♗f5 ♗f8
 11 ♖a4 g6
 12 d4

According to Bagirov's book on the English Symmetrical, this gives favourable complications as in Vaganian- Minasian, USSR 1991.



12 ♗d7

It is too dangerous for Black to allow the opening of the position whilst his ♖ is in the centre of the board.

13 dxe5 dxe5
 14 ♗h6?!

14 ♗e3 looks much better to me!

14 ♗d4
 15 ♗d5 ♗c6

Black has survived the potential crisis and now has virtually equalised.

16 ♖d1 ♗g7
 17 h4 ♗f8
 18 ♗g5 f6
 19 ♗e3 ♖d6
 20 a4 ♗fe6

White's ♗ on h6 is not really achieving anything as Black has been looking to castle ♖-side.

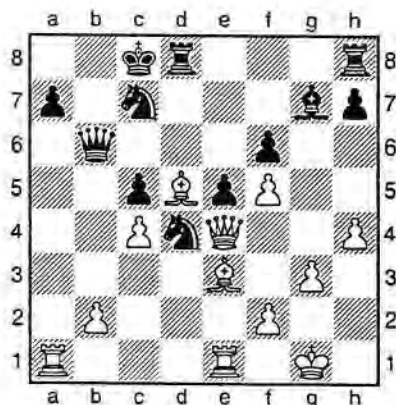
21 ♖d3 ♖f8
 22 ♗f5?!

A bold move to open lines.

22 gxf5
 23 exf5 ♗xd5
 24 ♗xd5 0-0-0
 25 ♖e4

I expected 25 fxe6 ♗f3+ 26 ♖h1 ♗xe1 27 ♖xe1 a5 28 ♖f2 ♖e7 29 ♖ed1 ♖b8 30 b3 with equal chances.

25 ♗c7
 26 a5 ♖d6
 27 axb6 ♖xb6



28 ♗xd4

If 28 ♗b7+ ♖d7 29 b4 ♖e7 30 ♖g4 ♖f7 31 bxc5 ♖xc5 32 ♖h5+ ♖g8 and Black is doing fine.

28 exd4
 29 ♖g4 ♗xd5
 30 cxd5 ♖d7
 31 ♖e6 ♖b7

I also considered 31 ... ♖xb2 32 ♖c6+ ♖b8 33 ♖d1 ♖xd5 34 ♖xa7 ♖xf5 35 ♖xg7 ♖xf2+ 36 ♖h1 ♖f1+ 37 ♖xf1 ♖xf1+ 38 ♖g2 ♖f5 but was not too sure about this rather risky variation.

32 ♖c6+ ♖b8
 33 ♖xc5 ♗f8
 34 ♖c6 ♖xd5
 35 ♖f4+ ♖e5
 36 ♖ac1 ♗e7
 37 ♖e6 ♖d8
 38 ♖xe5 fxc5
 39 ♖xc5+ ♗d6
 40 ♖xd4 ♗c7

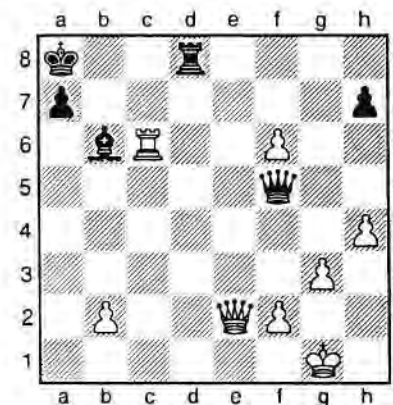
Well, at move 40, Black has managed to complete his development, retaining the extra piece, but, with White having an extra 3 pawns, it is not easy!

41 ♖c3 ♗b6
 42 ♖e5+ ♖a8
 43 ♖f4

Maybe 43 ♖e1 was better but 43 ... ♖f3 44 ♖e4+ ♖xe4 45 ♖xc4 ♖d1+ 46 ♖g2 ♖d2 47 ♖f4 ♖xb2 48 f6 ♗c5 49 ♖f5 ♗f8 50 ♖d5 h6 51 ♖d8+ ♖b8 52 ♖d7 a5 53 ♖f3 a4 54 ♖c4 a3 55 f4 a2 56 ♖d1 ♖b1 wins.

43 ♖d4
 44 ♖e5 ♖d2
 45 ♖e8+ ♖d8
 46 ♖e2 ♖d5
 47 f6 ♖f5
 48 ♖c6?

Probably not the best, but the advance f-pawn is doomed and Black retains control.



48 ♗xf2+

Decisive as if 49 ♖xf2 50 ♖d1+ ♖g2 51 ♖e4+ wins White's ♖.

49 ♖g2 ♗xg3
 50 ♖f3

Again the ♗ is "taboo" because 50 ♖xg3 ♖g8+ (or ♖d3+).

50 ♖d2+
 0 1

If 51 ♖xg3 ♖e5+ 52 ♖f4 ♖d3+ 53 ♖g4 h5 #.

In the other game, my distinguished opponent gained a deserved revenge with a well-played Nimzo against my favourite 4 f3.

100 CLUB

This is a club for members who would like to help with the development of the Scottish Correspondence Chess Association. Currently there are almost 80 units issued but we need to increase this to 100 - please help us!

The subscription is only £1 per month per unit, with two prizes each month currently approx £24 and £16 respectively - members may apply for more than one unit if they so wish!

A monthly bankers order form can be obtained from our Treasurer, David Kilgour, "Willowbank", Peebles Road, Galashiels, TD1 1TH. If you return it to him before the 10th of the month, then you will be eligible to be in the draw for that month.

Recent winners:

March: G.W.G. Livie
A.P. Borwell

April: K.B. McAlpine
J.W. Kilgour

May: G.E. Wallwork
G.W.G. Livie

June: C.R. Beecham
Allen Taylor

Thinker's Press

Alapin French, Tactics for White

Sawyer, £8.99

Blackmar Diemer Gambit

Keybook

Sawyer, £13.99

Journal of a Chess Master

Gerzadowicz, £11.99

Thinker's Chess

Gerzadowicz, £10.99

King's Gambit as White, 3rd Ed.

Raingruber & Maser, £13.99

Henrique Mecking

Latin Chess Genius

Gordon, £10.99

Available from QBS less usual SCCA discount

If you've enjoyed playing international opponents in friendly matches, then why not try an ICCF event? Details are given in the blue entry form which is enclosed with this magazine.

"YOUR" ASSOCIATION

If you have any ideas or suggestions about improving or developing the Scottish CCA, we would be very pleased to hear from you. Just write to the Editor or one of the Office-Bearers (addresses on inside of front cover)



BITs 'n' Pieces



by ian marks

Remembering Alan

It was both a surprise and a privilege to be invited to play in the Alan Shaw Memorial. Having known Alan for 27 years, this was one tournament I'd have sold my granny's jewellery to get into.* I have many memories of Alan, too many to list here. Like the time he, Frank Whitelaw and I were travelling to a tournament in the south of England. We stopped off in Sutton Coldfield to say hi to Barry Wood, who, it turned out, was heading for the same venue to flog his wares. We offered to load up Alan's car with the merchandise. B.H. agreed, and I spent the rest of the journey in the back seat reading my way through the contents of the bookstall. Or the mad nights when Cathcart reprobates would descend *chez* Alan for interminable (and well-lubricated) sessions of blitz, soundtrack by Pink Floyd, The Police et al. The chess was usually as spaced-out as the music.

Alan's tournament has given fifteen lucky players the chance to play some nice chess and remember a real chess friend. The following game is fairly typical of my own experiences so far: interesting, complicated and unpredictable. Alan wouldn't have wanted it any other way.

Wherever you are, old pal, this one's for you.

Alan Shaw Memorial, 1995-96

4 Nxd4 a6!

White: Ian Marks, 2170

Black: Kristian Rohde Jensen (DEN),
2385

Sicilian Defence B42

1	c4	c5
2	Nf3	e6
3	d4	cxd4

I have a lot of sympathy for the Kan. O.K., so Black is making a lot of pawn moves while White is getting his pieces out, but they're all *useful* pawn moves, and he can always arrange his pieces later depending on what White does. As Peter Clarke says in *Tal's Best Games*, "Natural developing moves... are shelved for the moment on the assumption that they can never be prevented."

* But I didn't have to.

5 Bd3

"White declines to give his opponent any information as to his basic plans." - Clarke, *ibid*.

5 Bc5!
6 Nb3 Ba7
7 Qe2 Nc6
8 Be3 Bxe3!?

Recent practice has preferred to avoid this exchange on the grounds that after Bxa7 Rxa7, the rook is handily placed to swing into action along the second rank after ...b5. However, the Copenhagen police inspector has a new idea in mind.....

9 Qxe3 Nf6
10 Nc3 Qc7
11 f4 d6
12 0-0-0 b6

Black usually goes ...b5 and ...0-0 in this line, when White gets good attacking chances with things like Qh3/Rhg1/g4 etc. The quieter text suggests Black is heading the other way.

13 g4 Bb7

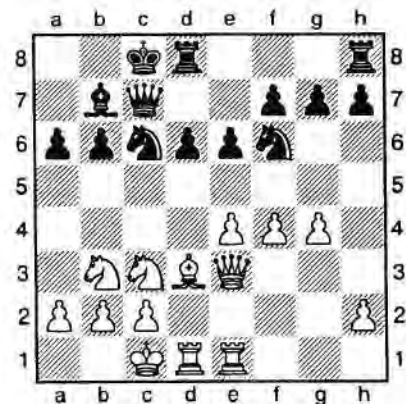
13 ...Nxc4 just results in a trade of g-pawns. Black rightly sticks to his plan: develops, prepares to castle and lines up pressure on the long diagonal.

14 Rhe1

This can't be wrong - centralisation rarely is - but it could be argued that the rook might be better posted

elsewhere depending on how things develop. See move 29!

14 0-0-0!



I like Black's whole idea. His position is pleasingly harmonious and, as with all hedgehogs, there's no easy way through.

15 Qe2 Nb4
16 Kb1 Kb8
17 a3

This took some weighing up, the strengthening of e4 v the weakening of b3 - and who knows when that might become of moment?

17 Nxd3
18 cxd3 h5!?

This might be committal. 18 ... Nd7 at once looks O.K.

19 g5 Nd7
20 Rc1 Nc5
21 Nd2!

Black has less space, so in general exchanges would only benefit *him*. Specifically, 21 Nxc5 dxc5 is obviously not on: it blocks the c-file and gives Black an easy game with pressure down the d-file. 21 Nd4 is probably O.K., but on d4 the knight has less scope. After 21 Nd2, though, there are long-term ideas of Nd2-c4, eyeing up b6 and d6, or even on to e3, ogling d5.

21 Qc7
22 Nc4 Nb3
23 Rcd1

23 Rc2? Nd4.

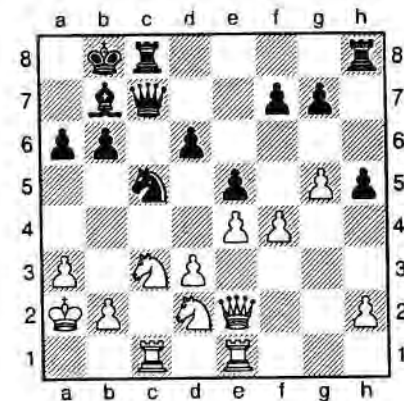
23 Qc7
24 Ka2 Nc5

24 ...Nd4 25 Qf2 e5 might be worth a thought. the more so since Black plays ...e5 in two moves' time anyway.

25 Rc1 Rc8
26 Nd2

This cagey stuff is like snooker safety play: the players edge their pieces around without disturbing the position too much. There are no obvious ways to clear the c-file for my rook to get at the black queen, and even if there were, I'd hesitate to play something as wild as b2-b4.

26 e5



Big Decision, weakening d5. Black only spent one day on it. Was he getting impatient, or was it planned in advance? I think he should just continue to manoeuvre, say 26 ...Qe7, after all, all the other pieces have been shuffling back and forth over the last few moves.

27 f5 f6
28 gxf6

If I'd known then what I was to know in a few moves, I might have been more tempted to go for 28 g6 and try to gang up on the h-pawn, e.g. g6/h4/Nf1-g3, or g6/...h4/Nf3/Qf2. Regular readers of this column (eh, there *are* readers of this column...!?) will have guessed what's about to happen. Yep, the tactics are on their way and Our Hero is about to miss what Basil Fawlty might have termed the bleeding obvious*.

* Check out *Basil the Rat*

(Chess blindness has been a recurring theme of these articles. I'm not the only player who misses things, even by mail. Maybe I'm just the only one daft enough to admit it.)

28 gxf6
29 Rg1 Qf7+

CHECK, so the planned Rg1-g6 has to wait a move. How can you miss a check at postal chess? Jeez.

"What deserves our attention most is the last thing to get it."
Epictetus

30 Kb1

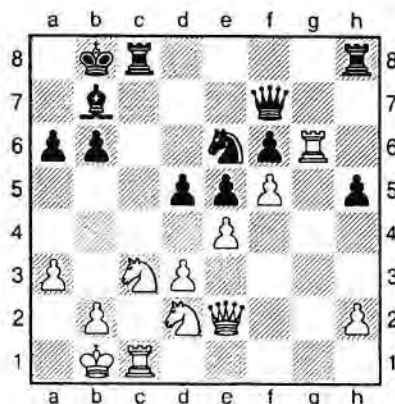
No harm done, luckily.

30 d5!

"Unseen, in the background, Fate was quietly slipping the lead into the boxing glove."

P.G. Wodehouse, *Very Good Jeeves*

31 Rg6!?! Nc6?



Looks like a shot, but it loses. I didn't know that at the time, for the move never entered my head. (WHY AM I TELLING YOU THIS?) My rook is on a square where it's sturdily defended, and he puts *his* piece on a square where it's sturdily attacked....

"I must confess that in my case such blindness, such failure to spot what has been right under my nose has been a common occurrence."

Alexander Kotov,
Think Like a Grandmaster

After the game, Kristian commented ruefully, "My original plan at move 31 was 4544 followed by 3556, but suddenly I had the 'great' idea that 3556 at once were even better."

31 ...d4 certainly cuts out the fankle that Black gets into with the passed pawns: 31 ...d4 32 Nd5 (Surely I don't have to play 32 Nd1?) Bxd5 (Ne6 33 Rxf6) 33 exd5 Qxd5 (Rcd8, say, 34 Ne4 looks O.K. for White, but see Uncle Alex's observation above) 34 Rxf6 Nd7 35 Rxc8+ Kxc8 36 Re6 Δ Nc4 (or even 36 Nc4 at once) is messy, but, again, looks O.K. for White. On such trifles do games turn.

32 fxe6

Only move, else the knight hops in to a useful square on d4 or f4. Ever noticed how the phrase "only move" has overtones of forced moves in bad positions? Yet here it kicks off the winning sequence.

32 Qxg6

33 exd5!

33 Nxd5 Rxc1+ 34 Kxc1 Qg1+ and now (a) 35 Kc2 Bxd5 36 exd5 Qc5+ 37 Kb1 Qxd5; (b) 35 Qd1 Rc8+ 36 Nc3 Qxd1+ 37 Kxd1 Re8; (c) 35 Qf1 Qxf1+ 36 Nxf1 Re8 and (d) Nf1 Bxd5 etc. are more problematical. It was only after I'd eliminated these and decided on pawn takes that I realised I was probably winning. (I was still taking valium for Black's 31st.)

33 Qg4
34 Qxg4!

And this nips Black's idea in the bud. With the queens gone, the passed pawns are unstoppable. Maybe Black was thinking of taking on h2 and pushing his own pawns, but it's far too slow.

34 hxg4
35 Nc4 b5

I don't see a defence. If 35 ...Kc7 36 d6+, while most others allow 36 d6 anyway.

36 Nd6 Rc7
37 Nxb7

Achtung! On 37 Nf5 Black muddies with 37 ...Rxc3! 38 Rxc3 Bxd5 39 e7 Bf7.

37 Kxb7
38 d6 Rc6
39 Ne4 0

40 e7 and 41 d7 are on their way, even after 39 ...f5. If 39 ...Rxc1+ 40 Kxc1 Kc6 41 e7 (d7 f5 42 Nf6 Kd6) f5 42 Nf6 Kxd6 43 e8=Q Rxe8 44 Nxe8+ Ke6 (or e7) 45 Ng7(+) Kf6 46 Nh5+ Kg5 47 Ng3 f4 48 Ne4+ Kh4 49 Kd2 g3 (Kh3 50 Nf2+) 50 hxg3+ fxg3 51 Nxb7 Kxb7 52 Ke3+- (or instead 51 Ke2 g2 52 Kf2+-, avoiding 52 Nd2?! g1=N+!).

"Fortune brings in some boats that are not steered."
Shakespeare, *Cymbeline*



Ian Marks

NEW BOOKS

reviewed by Alan Borwell

Winning with the Kan

by Ali Mortazavi
144 pages, £12.99

In his first book for Batsfords, this author has produced a thorough exposition of the virtues of the Kan Defence to the Sicilian.

Using 32 illustrative games, most of the main variations are covered, with up-to-date cross-references. There is an interesting review of the use of the Hedgehog pawn formation to counter the Maroczy Bind, one of White's most popular lines against the Kan.

Recommended.

New Ideas in the Sveshnikov Sicilian

by Neverov & Marusenko
144 pages, £12.99

Continuing the excellent series of *New Ideas*, this is a very useful update of one of the most dynamic Sicilian variations.

There are over 30 key games, all played in the 1990s to illustrate up-to-date theory.

I have used the Sveshnikov with some success at postal chess and it certainly provides some very interesting positions!

Recommended.

The Times - Winning Moves

by Raymond Keene
96 pages, £6.99

250 positions of varying complexity from Keene's daily column in *The Times*.



Batsford

4 Fitzhardinge Street,
London W1H 0AH.
Tel. 0171 486 8484

New Ideas in the Alekhine Defence

by Graham Burgess
£128 pages, £10.99

Batsford's Chess Editor is a well-known authority on the Alekhine and in this book he provides a survey of recent innovations, as an update to his earlier *The Complete Alekhine*.

A well researched book which will be an essential purchase for Alekhine addicts.

Alexander Alekhine's Best Games

by Alekhine
(foreword by Garry Kasparov)
304 pages, £17.99

A collector's piece, containing a selection of 118 well-annotated games played by one of the most famous chess players ever.

Compiled from previous books and converted into figurine notation by John Nunn, with useful footnotes/comments on the original annotations.

Endgame Magic

by Beasley & Whitworth
192 pages, £9.99

Written by two renowned Studies experts, this is a very instructive and interesting book for those who have time to browse whilst travelling, or for bedtime reading!

Winning at Correspondence Chess

by Tim Harding
176 pages, £14.99

This is the first book to be written in recent years focusing entirely on Correspondence Chess. It includes comment and information on CC play by post, fax and Email.

There are chapters providing an introduction to the world of correspondence chess, How to Get Started, Mastering the Rules, The CC Player's Armoury, Books, Databases and CC Openings. There is a selection of games played by *Kings and Queens of CC*. The final pages consider computers and the future of CC, with contact addresses.

This is a well-presented, readable and informative book for CC players of all standards. There are useful indices of Topics, Players and Openings.

Correspondence chess in Scotland is given good coverage and there is information/comment about inter-national play via ICCF etc..

Highly recommended.

Anatoly Karpov's Best Games

by Karpov
175 pages, £14.99

Containing 43 well annotated games, ranging from his early years up to Linares 1994. This is a snapshot of Karpov's games rather than a more complete collection of Best Games.

Its introduction is very brief but the games are analysed in a way which makes interesting reading. Not of the quality which you would hope for from a book carrying such a title.

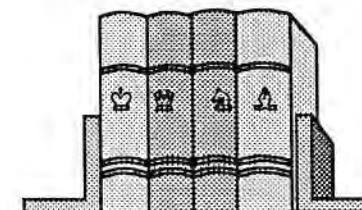
Positional Play
by Dvoretsky & Yusupov
288 pages, £17.99

This is the fourth in the very popular series of training manuals.

Its objective is to provide understanding of positional characteristics which lead to advantages/disadvantages.

It is a goldmine of useful advice for playing a wide range of positions. The sections on Prophylactic Thinking and Positional Transformations are particularly interesting.

Recommended.



Schach-Profi
Verlag Reinhold Dreier



The Trompovsky Attack
by Wolfgang Gerstner

A 200-page update of all the main lines in this increasingly popular opening. Fair amount of German script but figurine notation and Informant coding assists understanding.

Price DM34.80 from Verlag Dreier,
Seydlitzstr.13, 67061 Ludwigshafen,
Germany (Fax 6237-80674)

CADOGAN CHESS BOOKS

Play the French
by John Watson
224 pages, £14.99

This is a fully revised version of the author's classic book on one of Black's more interesting and dynamic defences.

Giving a good understanding of typical formations, there is plenty of original analysis and suggestions for further exploration.

It contains up-to-date games references, with a choice of two or three alternatives in each main variation covered. The book does not cover all variations - for example, the 5 ... Ba4 variation in the Winawer, which at least 3 well-known Scottish CC players have been using recently!

Highly recommended.

Studies and Games
by Jan Timman
192 pages, £12.99

Originally published in Dutch in 1983, this classic book was written when the great GM was in his prime.

A blend of superb games and studies, with fascinating anecdotes and commentary.

Recommended.



Winning Quickly with White
Winning Quickly with Black
by Neishtadt
Each 160 pages, £12.99 each

These each contain 100 miniatures of under 20 moves, grouped by openings, with players' index.

The Russian chess writer's work has been translated and edited by Ken Neat into two attractively produced companion books.

Chess in the Fast Lane
by Bill and Michael Adams
192 pages, £12.99

A selection of 50 of Michael Adams' best games, with the background story provided by his father, Bill.

Michael has just reached the World's top 10 rated players, having made consistent progress since winning the British Championship in 1989. Rather surprisingly, the latest games which are included are from 1993 and therefore a further volume perhaps can be anticipated!?

Interesting and instructive.

**An Opening Repertoire
for the Attacking Player**
by Eduard Gufeld
160 pages, £14.99

The proposals are based on 1 e4 for White and the Sicilian (Dragon) and Dutch as Black.

Against black defences to 1 e4, the suggestions are Grad Prix Attack v Sicilian, 4 Pawns v Alekhine, and the Advance Variations v French and Caro-Kann, and Vienna against 1 ... e5.

Just arrived - but it looks useful!

Chess Digest Books

**Evans Gambit and A System versus Two
Knights Defense**
by Tim Harding
220 pages, £12.95

This is an updated edition of the 1991 book dealing with the opening moves 1 e4 e5 2 Nf3 Nc6 3 Bc4 Bc5 4 b4 in the first part, and suggested lines of the Two Knights Defence, Hungarian Defence, etc thereafter.

This is a far superior book to the poor effort by Richard Moody published recently. Indeed, it contains 12 pages virtually destroying Moody's assertions, but with constructive analysis and reasoned argument.

Recommended.

How to Play the Torre Attack
by Eric Schiller
210 pages, £12.95

A revised second edition of a popular 1991 book with White playing 1 e4 2 Nf3 and 3 Bg5 against almost any black defence!

I have used this opening in 6 World Semi-Final games recently and it is certainly very secure for White. However, Black seems to be able to set up a solid position and maybe the word *Attack* is a misnomer! Perhaps I will have some practical examples for inclusion in the 3rd edition!

Trends Openings Booklets

The following new titles have been published during 1996 and all are available from Qualitext Business Services (£3.95 each) :-

Slav, Vol 2 - J. Hodgson
Reti, Vol 2 - Wade/Gkoutintas
Semi-Slav Meran, Vol 2 - B. Lalic
Czech & Schmid Benoni, Vol 2 - M. Sher
Italian, Vol 2 - S. Lalic
Bogo-Indian, Vol. 2 - S. Lalic
Classical/Stonewall Dutch, V2 - B. Lalic
Petroff, Vol. 3 - E. Sindlik
Scotch, Vol. 2 - G. Flear

A full list of all of these excellent opening booklets, each containing 100 featured games and evaluated by titled players, is shown under a QBS panel elsewhere in this magazine.

Chess Informant Openings Monographs

The most recent to be published is the *Sicilian Richter* (B66) variation by Vishy Anand of 152 pages (£8.95).

Qualitext Business Services now have all Informant publications in stock, including *640 Best*, *64 Golden Games* advertised in March (£11.95).

Chess Informant No. 66 is due for publication in early August. Orders can be placed now at £19.95 less 10% discount.

ICCF INDIVIDUAL TOURNAMENTS

(by George Pyrich)

A relatively quiet period with 5 new entries (Nos 9 to 13 below). Also listed are those unallocated last time (Nos 1995/18 & 19, and 1996/1 to 9).

No	Name	Tournament Class/Players	ICCF Tourney Ref	Method of Play
1995				
18	M.G. Brown	European 3rd	7	Corr
19	A.R. Angus	European 1st	7	Corr
20	A. Knox	European 3rd	7	Corr
1996				
1	A.P. Borwell	World Master	7	Email
2	A.P. Borwell	World Master	7	Email
3	J.I. Coltart	World 1st	15	Corr
4	G.M. Anderson	World 2nd	7	Corr
6	A.N. Macmillan	European 1st	7	Corr
7	I.H. Marshall	European 1st	15	Corr
8	A.N. Macmillan	European 1st	7	Corr
9	T. Thomson	World Master	15	Corr
10	C.A. Macgregor	World 3rd	7	Corr
11	G.M. Anderson	European 1st	7	Corr
12	J.H. Nielsen	European Master	15	Corr
13	J.H. Nielsen	World Master	7	Email

Also listed are the latest batch of final results:-

Name	Tournament Class	Final Place	Score
F. Ross	EU/111/1083	7	0/6
J. McKenna	WT/11/GT/23	10=	5/14
I.A. Marks	WT/M/GT/287	13=	2/14
I.H. Marshall	EU/H/1151	2=	3½/6
I.H. Marshall	EU/H/GT/230	5=	8½/14

ICCF THEMATIC TOURNAMENTS

Sections of 5-7 players, two games against each opponent. Top two players qualify for each Final.

Entries by 1/8/96 Start on 1/10/96

9/96: French - 1 e4 e6 2 ♘f3 d5 3 e5 c5 4 b4

10/96: Irregular Opening - 1 ♘f3 d5 2 d4 ♗f5 3 c4 e6

Entries by 1/10/96 Start 1/12/96

11/96: Guiooco Piano - 1 e4 e5 2 ♘f3 ♘c6 3 ♗c4 ♗c5 4 c3 ♘f6 5 d3 d6

12/96: Queen's Gambit, Cambridge Springs - 1 d4 d5 2 c4 c6 3 ♘f3 ♘f6 4 ♘c3 e6 5 ♗g5 ♘bd7 6 e3 ♗a5 7 ♘d2 ♗b4 8 ♗c2 e5.

Entry fee is £5 per group (payable to Scottish CCA) to: Mr. George D. Pyrich, 53 Dunnikier Road, Kirkcaldy, Fife, KY1 2RL.



[by Richard Beecham]

Results:

Scotland (8½) v Czech Republic (17½)

Bd 6	E. Hartford	0 2	P Svacek
Bd 9	A. Brown	½ 1½	M. Michalek
Bd 14	S. MacKenzie	½ 1½	J. Ryska
Bd 15	D.G. McRoberts	½ 1½	B. Glembek
Bd 19	B. Wood	0 2	E. Lorenz

Scotland (5½) v Switzerland (19½)

Bd 12	I. Sneddon	0 2	T. Wuerth
-------	------------	-----	-----------

Scotland (6½) v France (29½)

Bd 14	N.R. McEwan	0 2	A. Audie
Bd 15	A. McMillan	1½ ½	M. Aymard

Scotland (16) v Canada (21)

Bd 1	A.P. Borwell	1 1	Z. Sarosy
Bd 4	I. Marshall	0 1	N. Ziminski
Bd 10	J. Clayton	½ ½	O. Farid
Bd 22	A. Armstrong	½½ ½½	H Frederiksen
Bd 23	B. Milligan	2 0	D. Grabb
Bd 25	C. Macgregor	0 1	J. Baril

Correction

Bd 21	A. Brown	2 0	S. Lalande
-------	----------	-----	------------

Scotland (10½) v Brazil (13½)

Bd 3	I.A. Marks	0 2	J.B. Da Silva
Bd 7	A. Brown	0 1	N Favarsani Jur
Bd 9	A. Macmillan	1 1	DM Candido
Bd 18	B Milligan	0 2	HAM Cesar
Bd 20	G.M. Anderson	1 1	G deS Baptista

Scotland (20) v Belgium (14)

Bd 10	A. Macmillan	1 1	P. Goyvaerts
Bd 14	A. Campbell	2 0	M. Ringoir

Scotland (3) v BCCS (11)

Bd 2	M. Harkins	0 2	N. Ardin
Bd 4	I Sneddon	0 2	C Holt
Bd 9	B Milligan	0 2	I. Truscott
Bd 11	R.J. Simpson	0 2	J. Fenton

Scotland (5½) v ASPCC, USA (4½)

Bd 1	G.D. Pyrich	½ ½	R. Barry
Bd 2	J Watson	1½ ½	S. Barbre
Bd 6	M Harkins	1½ ½	M. Mulford
Bd 10	A. Taylor	0 1	Dr R. Shearer

Start 1/6/96

	SCOTLAND	ISRAEL
1	G.D. Pyrich	P. Azar
2	A. Macleod	G. Mishnayeovski
3	A.P. Borwell	I. Oren
4	C.R. Beecham	A. Gutzait
5	I. Mackintosh	M. Elent
6	K.W.C. Stewart	Z. Palgi
7	E.C. Sowden	Y. Resheff
8	C. Almarza-Mato	M. Rechtman
9	I. Marshall	N. Solomon
10	M. Harkins	G. Erez
11	G.M. Anderson	I. Noy
12	I. Sneddon	Y. Dothan
13	Mrs. E. Hartford	H. Brayer
14	D.R. Cumming	Z. Bar-Ziv
15	A. Hind	A. Saad
16	A.D. Crawford	S. Lifshitz
17	C.M. Dowell	R. Shtrikman
18	B. Milligan	G. Vinshtain

Start 1/7/96

	SCOTLAND	JAPAN
1	C.R. Beecham	Dr T. Hayashi
2	J. Watson	T. Hirashima
3	G.M. Anderson	K. Akadegawa
4	K.W.C. Stewart	A. Yoshino
5	I. Sneddon	N. Kubo
6	D.R. Cumming	Ms K Takatsuka
7	B. Milligan	K. Onitsuka

4th North Atlantic Team Tournament Results

Bd 5	C F Boyle	1 0	B D Thomas (WLS)
Bd 7	I S Campbell	1 0	J Coleby (WLS)

ICCF OLYMPIAD XI FINAL

Board 1					1	2	3	4	5	6	7	8	9	10	11	12	13	Pts		
1	Zilberberg	AS	IM	2580	USA	◆	1	½	1		1	½	½		1	0	½	½		
2	Sloth	J	GM	2635	DEN	0	◆	½	½	½	1	1	½	1	½	0	0			
3	Ballon	GJ	IM	2465	NLD	½	½	◆	½	½	½	0	0	0		0	0	½		
4	Hébert	J	GM	2500	CAN	0	½	½	◆	1	½	1	½	½	½	0	½	0	½	6
5	Krzyszton	J	GM	2605	POL		½	½	0	◆	1	½	1	1	0	½	0	½		
6	Bryson	DM	GM	2580	SCO	0	0	½	½	0	◆	0	½	½	0	½	1	½	4	
7	Hammar	B		2525	SVE	½	0	1	0	½	1	◆	0	1	½	0	0	0	4½	
8	Breazu	M	GM	2500	ROM	½	½	1	½	0	½	1	◆	1	½	½	½			
9	Honfi	K	IM	2475	HUN		0	1	½	0	½	0	0	◆	0	0	0	½		
10	Zapletal	J	IM	2505	CSR	0	½		½	1	1	½	½	1	◆	½	½			
11	Burger	H	IM	2570	GER	1	1	1	½	½	½	1	½	1	½	◆	½			
12	Webb	S	GM	2615	ENG	½	1	1	1	½	0	1	½	1	½	½	◆	1	8½	
13	Sanakojev	GK	GM	2595	RUS	½		½	½			1	½			0	◆			

Board 2					1	2	3	4	5	6	7	8	9	10	11	12	13	Pts	
1	Abram	G	IM	2580	USA	◆	½	0	1	0	½	0	1	0	1	0	½		
2	Poulsen	A	IM	2630	DEN	½	◆	0	½	½	0	½	1	0	0	0	½		
3	v Oosterom	JJ	GM	2575	NLD	1	1	◆	½	1	½	½			1	1	½		
4	Berry	J	GM	2570	CAN	0	½	½	◆	½	0	1	½			½	½	0	
5	Matlak	M	(IM)	(2420)	POL	1	½	0	½	◆	0	½	1		1	½	1		
6	Muir	AJ	IM	2540	SCO	½	1	½	½	1	◆	½	½	1	1	1	1	½	9
7	Andersson	G	GM	2505	SVE	1	½	½	1	½	◆	½	1	0	1	1	½	8	
8	Rotariu	G	GM	2415	ROM	0	0		0	½	½	◆	½	½			1		
9	Meleghegyi	C	GM	2605	HUN	1	1		½		0	0	½	◆	0	0	½		
10	Lanc	A	IM	2570	CSR	0	1	0		0	0	1	½	1	◆	1	½		
11	Palm	H	IM	2560	GER	1	1	0	½	½	0	0		1	0	◆	1	½	
12	Hollis	A	GM	2545	ENG	½	½	½	½	0	0	0	0	½	½	0	◆		
13	Korolev	Sl	IM	2615	RUS				1		½	½				½		◆	

Board 3					1	2	3	4	5	6	7	8	9	10	11	12	13	Pts	
1	Maillard	WE	IM	2550	USA	◆	½	0	0	0	0	0		0		0	½		
2	Jensen	VN	IM	2500	DEN	½	◆	0	½	½	½	0	0	½	0	1	0		
3	Weijerstrass	R	IM	2415	NLD	1	1	◆	½	0	½	0	½	0	0	½	½		
4	Wright	J	IM	2490	CAN	1	½	½	◆	1	½	½	0	0	0	½	1	½	6
5	Sek	Z	IM	2570	POL	1	½	1	0	◆	½	1	½	½	1	½	1		
6	McNab	CA	(GM)	2500	SCO	1	½	½	½	½	◆	1	½	½	0	½	1		
7	Carlsson	I	IM	2455	SVE	1	1	1	½	0	0	◆	½	0	½	0	1		
8	Suta/Follert	M	IM	2455	ROM		1	½	1	½	½	½	◆	½	0	0	0	½	
9	Glatt	G	IM	2505	HUN	1	½	1	1	½	½	1	½	◆	0	½	½		
10	Privara	I	IM	2570	CSR		1	1	1	0	1	½	1	1	◆	½	0	½	
11	Maeder	K-H	GM	2585	GER		0	½	½	½	½	1	1	½	½	◆	1	½	
12	Povah	N	GM	2595	ENG	1	1	½	0	0	0	0	1	½	1	0	◆	½	5½
13	Umanskij	MM	IM	2690	RUS	½			½			½	½	½	½	½	◆		

Board 4					1	2	3	4	5	6	7	8	9	10	11	12	13	Pts	
1	DeMauro	JA	IM	2615	USA	◆			½	½		1					½		
2	du Jardin	J		2505	DEN		◆	½	½	½	0	0	½	0	1	0			
3	Idema	AA	IM	2540	NLD		½	◆	½	½	0	1	1	1	½	½	½		
4	Widmann	K	IM	2530	CAN	½	½	½	◆	0	½	½		1	½	½	½	½	
5	Bieluczyk	B	IM	2500	POL	½	½	½	1	◆	½	1	½	0	½		0	½	
6	Kilgour	DA	IM	2490	SCO		1	1	½	½	◆	1	½	1	½	½	1		
7	Korman	U	IM	2305	SVE	0	1	0	½	0	0	◆	½	0	0		0	0	
8	Mittelu	G		2350	ROM		½	0		½	½	1	◆	0	½	½	0	½	
9	Fabri	F	IM	2545	HUN		1	0	0	1	0	1	1	◆	0	0	0	0	
10	Mraz	M	IM	2505	CSR		½	½	½	½	½	½	1	½	1	◆	½	1	½
11	Baumbach	F	GM	2530	GER			½	½		½		½	1	½	◆	½	1	
12	Thomas	T	IM	2485	ENG	½	1	½	½	1	0	1	1	1	0	½	◆	½	7½
13	Stoljar	SE	IM	2535	RUS				½	½		1	½		½	0	½	◆	

Board 5					1	2	3	4	5	6	7	8	9	10	11	12	13	Pts	
1	Kubach	GL	IM	2510	USA	◆	½	½	½	0	½	0		0	1	0	½	½	
2	Sorensen	T	IM	2480	DEN	½	◆	½	0	½	0	½		0	0	0	½	½	
3	Sprenger	EII		2410	NLD	½	½	◆	½	1	½	0	½	0	½	0	½	0	4½
4	Pineault	D	IM	2470	CAN	½	1	½	◆	1	½	½	1	½	0	1	1	½	8
5	Mularezyk	J		2460	POL	1	½	0	0	◆	1	0		0	0	0	0	½	
6	Giulian	PM	IM	2395	SCO	½	1	½	½	0	◆	0	½	½	½	½	½	½	5½
7	Lindgren	M		2540	SVE	1	½	1	½	1	1	◆	1	½	0	½	1	½	8½
8	Miron	C		2660	ROM			½	0		½	0	◆	0	0	0		0	
9	Györkös	I.	(IM)	(2410)	HUN	1	1	1	½	1	½	½	1	◆	0	0	½	½	7½
10	Trapl	J	IM	2510	CSR	0	1	½	1	1	½	1	1	1	◆	0	½	1	8½
11	Anton	VM	GM	2620	GER	1	1	1	0	1	½	1	1	1	1	◆	½	½	9
12	Timson	P		2550	ENG	½	½	½	0		½	0		½	1	½	½	◆	½
13	Korelov	AP	IM	2590	RUS	½	½	1	½	½	½	½	½	1	½	0	½	½	6½

Board 6					1	2	3	4	5	6	7	8	9	10	11	12	13	Pts	
1	Camaratta	FA		2530	USA	◆	½	½	0	0	½	1	0	½	0	0	½	½	4
2	Hvidkrog	L	IM	2475	DEN	½	◆	½	0	1	1	0	1	1	1	½	½		
3	van Perlo	GC	GM	2455	NLD	½	½	◆	0	1	½	½		0	½	0	1		
4	MacLeod	D	IM	2520	CAN	1	1	1	◆	0	½	1		1	½	0	1		
5	Konca	D	IM	2455	POL	1	0	0	1	◆	0	½		1	0				
6	Borwell	AP	IM	2320	SCO	½	0	½	½	1	◆	½		1	½	0	0	½	
7	Hjort	B	IM	2495	SVE	0	1	½	0	½	½	◆	½	½	1	1	½		
8	Hlang	Ing E		2120	ROM	1	0				½	◆					½	½	
9	Keszi	J		2485	HUN	½	0	1	0	0	0	½		◆	0	½	0	0	
10	Göth/Sevecek		IM	2460	CSR	1	0	½	½	1	½	0		1	◆	½	½	1	
11	Kreuzer	M	IM	2660	GER	1	½	1	1		1	0		½	½	◆	1		
12	Sowray	P		2380	ENG	½	½	0	0		1	½	½	1	½	0	◆	0	
13	Bloch	M		2590	RUS	½					½	½	1	0		1	◆		

Leading scores:- Germany 65.3% (40½/62); Czecho-Slovakia 62.3% (40½/65);
 Scotland 55.1% (37½/68), Canada 54.4% (37/68); Russia 53.6% (22½/42);
 The 8 other countries all have less than 50%

ICCF OLYMPIAD XII PRELIMINARIES SECTION 4

Board 1				1	2	3	4	5	6	7	8	9	10	11	12	Pts
1	Camilleri	H	2395	MLT	◆	0	1		0	½	1	1	0	1	½	
2	Markauss	J	2545	LAT	1	◆	1	½	1	½	1		½	½	½	1
3	Chia	C-S	(2200)	SIP	0	0	◆	0	0	0	0	0	0	0	0	0
4	Portilho	GF	2410	BRS		½	1	◆			0					
5	Har-Even	A	2500	ISL	1	0	1		◆	0	1		1	½	0	
6	Leonardo	JP	2430	POR	½	½	1			◆			½		½	1
7	Wolny	R	2450	POL	0	0	1		1		◆	0	1	½		½
8	Cayford	T	2420	USA	0		1	1	0	1	◆	½	1	1		
9	Miskovsky	P	2505	CSR	1	½	1			½	0	½	◆	1	0	
10	Gillam	SR	2365	SCO	0	½	1		0	½	0	0	◆	½	½	
11	Thorbergsson	B	2525	ISD	½	½	1		½	½		0	1	½	◆	1
12	Keglevic	P	2305	CRO		0	1		1	0	½			½	0	◆

Board 2				1	2	3	4	5	6	7	8	9	10	11	12	Pts	
1	Attard	W	2110	MLT	◆	0	0	0	0	0	0	0	0	0	0	0	0
2	Vitomskis	J	2505	LAT	1	◆	1	½	1	1	1	1	1	1	½	1	10
3	Teo	B	2260	SIP	1	0	◆	0		0	½	0	0	0	0	0	
4	de Cresce	SH	2450	BRS	1	½	1		◆	½	½	1	½	1		1	
5	Granski	M	2495	ISL	1	0			◆	0	½		0				
6	Oliveira	AM	2315	POR	1	0	1	½	1	◆		0	½	0	½		
7	Dors	R	2500	POL	1	0	½	½			◆	½	½	½	0	0	
8	Callaghan	RS	2485	USA	1	0	1	0	½	1	½	◆	0	½	½	½	5½
9	Spodny	J	2460	CSR	1	0	1	½			½	1	◆		½	0	
10	Pyrich	GD	2335	SCO	1	0	1	0	1	½	½	½		◆	0	1	
11	Palsson	JA	2455	ISD	1	½	1			1	1	½	½	1	◆		
12	Klaic	P	2450	CRO	1	0	1	0		½	1	½	1	0		◆	

Board 3				1	2	3	4	5	6	7	8	9	10	11	12	Pts	
1	Sollars	C	(2200)	MLT	◆	0	0	0	0	0	0	0	0	0	0	0	0
2	Pulkis	V	2500	LAT	1	◆	½		1	½	0		½		½	½	
3	Williams/Mooi		(2200)	SIP	1	½	◆	0	0	0	0	0	0	½	0	½	2½
4	Felicio	C	2350	BRS	1		1	◆			½	½	½	½	1		
5	Kuperman	B	2325	ISL	1	0	1		◆		1				0		
6	Moura	AB	2415	POR	1	½	1			◆	½	½				1	
7	Matlak	J	(2200)	POL	1	1	1				◆	1		½	1	0	
8	Dehmelt/Meyers		2430	USA	1		1	½	0	½	0	◆	½	½	1	0	
9	Manduch	M	2450	CSR	1	½	1	½		½		◆	1				
10	Craig	TJ	2335	SCO	1		½	½			½	½	0	◆	½	½	
11	Kristinsson	J	2440	ISD	1	½	1	½	1		0	1	0	½	◆	½	
12	Paravic	Z	(2200)	CRO	1	½	½	0		0	1	1		½	½	◆	

Board 4				1	2	3	4	5	6	7	8	9	10	11	12	Pts	
1	Camilleri	S	(2200)	MLT	◆	0	½	0	½	0	0	0	0	½	0	0	1½
2	Strautinsh	U	2485	LAT	1	◆	1	1	1	1	1	½	0	1	½	1	9
3	Teo	K-C	2310	SIP	½	0	◆	½	0	½	0	0	½	0	0	0	2
4	Alvarenga	RF	2435	BRS	1	0	½	◆	½	1		½	½	1		1	
5	Azar	P	2455	ISL	½	0	1	½	◆	½	1	½		½	1	1	
6	Almeida	MC	(2200)	POR	1	0	½	0	½	◆	½	½		1		½	4½
7	Marcinkiewicz	A	2405	POL	1	0	1	0	0	½	◆		0	½	½	½	
8	Martinowsky	E	2380	USA	1	½	1	½	½	½			◆	½	1	½	1
9	Danek	L	2545	CSR	1	1	½	½			1	½	◆	½	1	½	
10	Livie	DM	2290	SCO	½	0	1	0	½	0	½	0	½	◆	½	½	4
11	Gudmundsson	K	2385	ISD	1	½	1		0			½	0	½	◆	0	
12	Movre	D	2345	CRO	1	0	1	0	0	½	½	0	½	½	1	◆	5

Board 5				1	2	3	4	5	6	7	8	9	10	11	12	Pts	
1	Sammut	R	(2200)	MLT	◆	0	0	0	0	0	0	½	0	1	½	½	2½
2	Strautinsh	V	2470	LAT	1	◆	½	½	0		1		1	1	1	0	
3	Wang	M-L	(2200)	SIP	1	½	◆		0		1		1	1	½	½	
4	Amorim	GS	2455	BRS	1	½		◆	0	0					1		
5	Eljakhim	D	(2200)	ISL	1	1	1	1	◆	1	1	0		1	½		
6	Demetrio/Cordiero		2285	POR	1			1	0	◆		½		1	1	0	
7	Haag/Nizynski	M	(2200)	POL	1	0	0		0		◆	0		1	½	½	
8	Embrey	K	2500	USA	½				1	½	1	◆	½	½	1	½	
9	Marzell	P	2475	CSR	1	0	0					½	◆	1	0	½	
10	Beecham	CR	2235	SCO	0	0	0		0	0	0	½	0	◆	0	0	
11	Thorsteinsson	E	2360	ISD	½	0	½	0	½	0	½	0	1	1	◆	0	4
12	Krivic	D	2245	CRO	½	1	½			1	½	½	½	1	1	◆	

Board 6				1	2	3	4	5	6	7	8	9	10	11	12	Pts	
1	Mifsud	T	(2200)	MLT	◆	0	0	0	0	0	0	0	0	0	0	0	0
2	Dauga	Z	2450	LAT	1	◆	1		1	1	½	0	1	1	½	1	
3	Leong	V	(2200)	SIP	1	0	◆	0	0	0	0	0	0	0	0	0	1
4	Barata	HAG	(2200)	BRS	1		1	◆		½			1	½			
5	Oren	I	2410	ISL	1	0	1		◆		0		0	1	½	0	
6	Morais	VM	2375	POR	1	0	1			◆	1	1		1	0		
7	Sapa	W	2240	POL	1	½	1	½	1	0	◆			1	½	½	
8	Owen	L	2420	USA	1	1	1			0		◆			½		
9	Laurenc	P	2445	CSR	1	0	1		1		0		◆	1	½	½	
10	Jenkins	DM	2310	SCO	1	0	1	0	0	0	½		0	◆	½	0	
11	Halldorsson	JA	(2200)	ISD	1	½	1	½	½	1	½	½	½	½	◆	½	7
12	Strucic	I	(2200)	CRO	1	0	1		1				½	1	½	◆	



5th European Team Championships

[George Pyrich]

Play began in this event at Christmas 1994. Thus far, our overall results have been a little disappointing, although it should be remembered that the level of opposition is very high. The table below records our results to date:-

Bd	Name	POR	LIT	NLD	WLS	FIN	BEL	CZE	UKR	FRA	Total
1	C.A. McNab	2520	½	½	1	½	½	½		½	4
2	P.M. Giulian	2415	½	½	½	½	½	0	½	0	3
3	A.P. Borwell	2360	0		1	1	1				3
4	D.J. Stewart	2410	0			½		0			½
5	T.J. Craig	2335					½				½
6	G.D. Pyrich	2265	½		½	1	1			1	4
7	C.R. Beecham	2270	0		1	½	0			½	2
8	D.M. Jenkins	2325		0			½	0		0	½
9	R.W.M. Baxter	2260		½	0		½		½		1½
10	T. Thomson	(2200)			1	½	1				2½
11	I.A. Marks	(2200)	0		0	½	0	½	½	0	1½
12	C.F. Boyle	(2200)		½	½		0	0		0	1

In the following games selection, some of our players have played some nice games, whilst others have enjoyed some remarkable good fortune!

♚♚♚♚♚♚♚♚

White: T. Thomson (SCO)

Black: M.J. Griffiths (WLS)

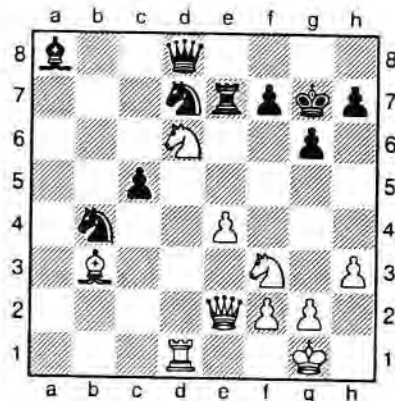
Ruy Lopez C95

1	e4	c5	11	♖bd2	♙b7
2	♗f3	♗c6	12	♘c2	♚c8
3	♘b5	a6	13	b3	♘f8
4	♘a4	♗f6	14	a4	g6
5	0-0	♘e7	15	♘b2	♘g7
6	♚e1	b5	16	axb5	axb5
7	♘b3	d6	17	♚e2	c6
8	c3	0-0	18	♚xa8	♘xa8
9	h3	♗b8	19	c4	exd4
10	d4	♗bd7	20	♘xd4	bxc4
			21	bxc4	d5
			22	cxd5	♗xd5
			23	♘xg7	♚xg7
			24	♗c4	♗b4
			25	♗b3	c5

26 ♗d6 ♚e7
27 ♚d1

White: C.A. McNab (SCO)
Black: T. de Ruiter (NLD)

King's Indian E63



Thus far, a fairly uneventful game, where Black could expect near equality (and a likely draw) after 27 ... ♗c6.

27 ♚a5??

♙27 ... ♗c6 28 ♚b2+ f6 29 ♚c3 ♗c7±.

28 ♚b2+ f6

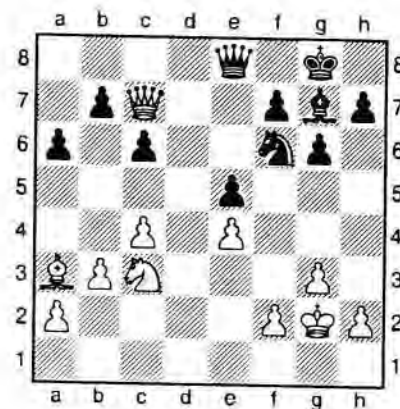
28 ... ♗f6 29 ♗c8! ♚e8 30 ♚d6+- was no better, and 28 ... ♚g8 29 ♗xf7!+- was also disastrous.

29 ♗e8+ ♚h6
30 ♚d2+
1 0

If 30 ... g5 31 ♗xf6 wins quickly for White.

♚♚♚♚

1	c4	♗f6
2	♗f3	d6
3	d4	g6
4	g3	♘g7
5	♗g2	0-0
6	0-0	♗c6
7	♗c3	a6
8	b3	♚b8
9	e3	♘d7
10	♚e2	♚c8
11	♗b2	♘h3
12	♚fd1	♘g2
13	♚xg2	c5
14	dxg5	♗xe5
15	♗xe5	dxg5
16	e4	♚c6
17	♗a3	♚fd8
18	♚xd8+	♚xd8
19	♚d1	♚xd1
20	♚xd1	c6
21	♚d8+	♚c8
22	♚c7	



Another uneventful game where White has a small edge. Astonishingly, Black goes down the tube within a few moves.

22 ♖d7?
 ♘22 ... b5 23 ♖a5 ♖c8 ±.
 23 ♖b8+ ♗e8
 24 ♗a4! b5
 25 ♗b6! ♖e6
 26 ♗c8
 1 0

26 ... ♗f8 27 ♗e7+! is crushing.

♖♖♖♖

White: P. Raivio (FIN)
 Black: G.D. Pyrich (SCO)

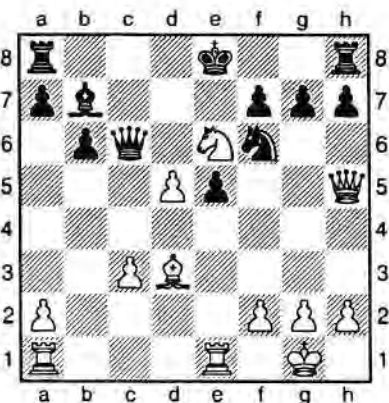
Sicilian Defence B22

The win in the following game can be attributed entirely to good luck (and having access to a large library).

1 e4 c5
 2 ♗f3 e6
 3 c3 ♗f6
 4 e5 ♗d5
 5 d4 cxd4
 6 cxd4 b6
 7 ♗c3 ♗b7
 8 ♗d3 ♗xc3
 9 bxc3 ♖c7
 10 ♗d2 d6
 11 0-0 ♗d7
 12 ♖e1 ♗e7
 13 ♗g5 ♗xg5
 14 ♗xg5 dxe5
 15 ♖h5 ♗f6

16 ♗xe6 ♖c6
 17 d5??

Given a "!" by Smirin in Informator 43.



17 ♖xc6!

Attributed to John Nunn in Gallagher's recent publication *Beating the Anti-Sicilians*.

18 ♗b5+ ♖e7
 0 1

♖♖♖♖

White: A.P. Borwell (SCO)
 Black: A. Lehto (FIN)

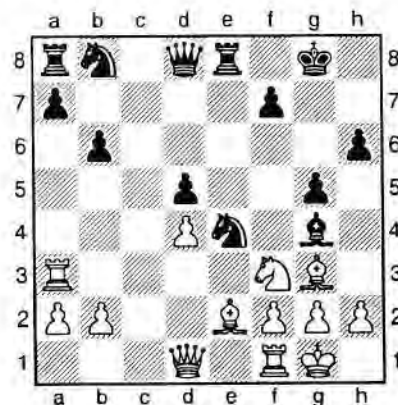
Caro Kann - Panov B14

1 e4 c6
 2 d4 d5
 3 exd5 cxd5
 4 c4 ♗f6
 5 ♗c3 e6
 6 ♗f3 ♗b4
 7 ♗d2 0-0

8 ♖c1 b6
 9 cxd5 exd5

Alan seems to like this line, which had earlier brought him success in the game Borwell-Pyrich, SCCA League 1993, which went 9 ... ♗xc3 10 ♖xc3 ♗xd5 11 ♖a3 ♗c6 12 ♗d3 ♖d6 13 0-0 ♗b7 14 ♖e1 ♗f4? 15 ♗e4 ♗d5 16 ♗g5 ♗f6 17 ♖g3! ♗a5 18 ♗xh7+!! ♗xh7 19 ♗xh7 ♖fd8 (19 ... ♗xh7 20 ♖h5+ ♗g8 21 ♖xg7+ ♗xg7 22 ♗h6+ ♗h8 23 ♗xf8+ +-) 20 ♖xg7+! ♗xg7 21 ♖g4+ 1:0.

10 ♗c2 ♖e8
 11 0-0 ♗g4
 12 ♗g5 ♗xc3
 13 ♖xc3 h6
 14 ♗h4 g5
 15 ♗g3 ♗c4
 16 ♖a3



16 f5?!

♘16 ... ♗c6 17 ♗b5 ♖f6 18 ♗e5 ♖g6 =.

17 ♗e5 ♗c6
 18 ♗b5 ♖c6
 19 ♖a4 ♗xe5
 20 ♗xe5 ♗h5
 21 ♗d7 ♖f6

Not 21 ... ♖xe5 when 22 dxe5 ♗c5 23 ♖c6 ♗xd7 24 ♖xd5+ ♗h8 25 ♖e6 +- wins easily.

22 ♖b5

Suddenly, Black has huge problems.

22 ♗g7
 23 ♗c6 a6
 24 ♖xa6 ♖xa6
 25 ♖xa6 ♖c6
 26 ♖b5 ♗f6
 27 f4 g4
 28 ♖c1 ♖e7
 29 ♖a6 ♖b8
 30 ♖d3 ♖c8
 31 ♖b5 ♖d8
 32 g3 ♗f7
 33 ♖c3 Resigns
 1 0

The b-pawn soon falls, when White wins easily.

♖♖♖♖

White: A.P. Borwell (SCO)
 Black: M.J. Quakkelaar (NLD)

QGD Slav Exchange D90

1 d4 d5
 2 c4 c6
 3 ♗f3 ♗f6
 4 ♗c3 g6
 5 cxd5 cxd5

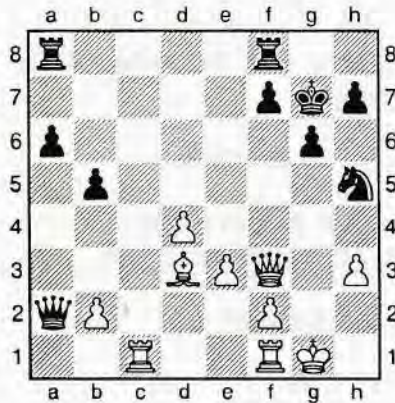
6 ♖f4 ♜c6
7 e3 ♜g7
8 h3 0-0
9 ♖d3 a6

9 ... ♗b6 10 a3 ♜f5 11 ♜xf5 gxf5 ± is a line worth further examination.

10 ♜c1 ♜d7
11 0-0 b5
12 ♜e5 ♜h5
13 ♜xd5 ♜xe5

13 ... ♜xf4 14 ♜xc6 ♜xh3+ 15 gxh3 ♜xc6 16 ♜xe7+ ♗xe7 17 ♜xc6 ♗g5+ 18 ♗g4 (18 ♜h2± needs to be considered also) 18 ... ♗d5 19 ♜fc1 ♗xa2 20 b4± may have been a better choice for Black.

14 ♜xc5 ♜xh3
15 ♜xe7+ ♗xe7
16 ♜xg7 ♜xg7
17 gxh3 ♗e6
18 ♗f3 ♗xa2



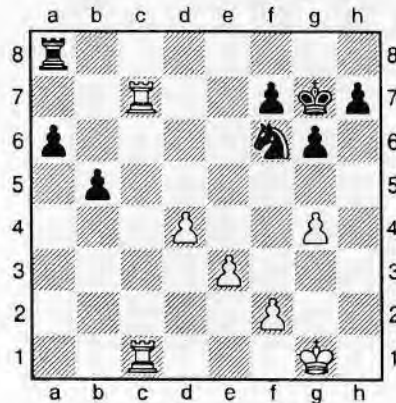
19 ♜c6!?

There were two alternatives: 19 ♜e4 ♜a7 20 ♜c2 ♜f6 21 ♜c6 ♜d8 22 ♜d1 ♜d5±; 19 ♜a1 ♗b3 (19 ... ♗xb2 20 ♜fb1 ♗c3 21 ♜xb5 ♜fb8 22 ♜d1± was no better) 20 ♜fd1 ♜f6 21 ♜d2±.

19 ♗xb2
20 ♜fc1 ♗a3
21 ♜e4 ♗c7?

□ 21 ... ♜ae8 22 ♜lc5 ♜e6 23 ♜xe6 ♗a1+ 24 ♜g2 fxe6 25 ♜c7+ ♜g8 26 ♗g4 ♗a2 27 ♜c2 ♗b3 28 ♜xg6! hxg6? (□ 28 ... ♜f6! 29 ♗g5 hxg6 30 ♗xg6+ ♜h8 31 ♗h6+ ♜h7 32 ♜c7 ♜g8+ 33 ♜h2 ♗b1 34 ♜xh7+ ♗xh7 35 ♗f6+=) 29 ♗xg6+ ♜g7 30 ♜c7 ♗d5+ 31 ♜g1+-.

22 ♜c7 ♗g5+
23 ♗g4! ♗xg4+
24 hxg4 ♜f6
25 ♜xa8 ♜xa8



26 ♜b7!

Also worth considering is 26 g5 ♜e4 27 f4 but the move played is best.

The rest is a simple technical task. Black's ♜ is unable to establish an outpost to block White's d-pawn.

26 ♜xg4
27 ♜cc7 ♜h6
28 ♜a7 ♜xa7
29 ♜xa7 ♜f5
30 ♜xa6 h5
31 ♜b6 g5
32 ♜xb5 ♜f6
33 ♜b6+ ♜e7
34 ♜g2 ♜d6
35 ♜c6 f5
36 f3 h4
37 ♜h3 ♜c6
38 ♜c5 ♜f6
39 f4 g4+
40 ♜xh4 ♜e4
41 ♜e5 ♜d2
42 ♜g3 ♜f1+
43 ♜g2 ♜d2
44 d5 ♜c4
45 ♜e6+ ♜g7
46 d6 ♜f7
47 d7

1 0
♗♗♗♗

White: M.D. Etmans (NLD)

Black: C.F. Boyle (SCO)

French - Winawer C01

1 e4 e6
2 d4 d5
3 ♜c3 ♜b4
4 exd5 exd5
5 ♜d3 ♜c6
6 a3 ♜xc3+
7 bxc3 ♜ge7
8 ♜b1 0-0

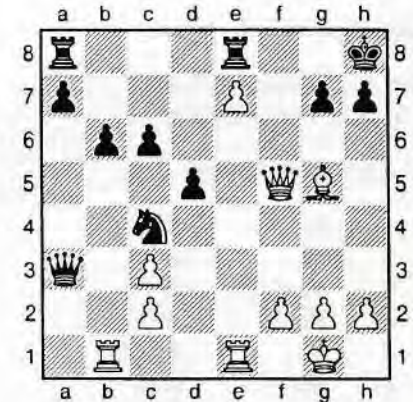
9 ♜f3 b6
10 0-0 ♜a5
11 ♜e5 f6

11 ... c5 12 ♜e1 c4 = looks O.K.

12 ♗h5 ♜f5!?

12 ... g6 13 ♜xg6 hxg6 14 ♜xg6 ♜xg6 15 ♗xg6+ ♜h8= 16 ♜h6? ♜g8 17 ♗h5 ♜g4 18 ♗h4 ♜g6!-+.

13 ♜xf5 ♜xf5
14 ♗xf5 fxe5
15 ♗e6+ ♜h8
16 dxe5 ♜e8
17 ♗f5 ♗e7
18 ♜e1 ♜c4
19 e6 c6
20 ♜g5 ♗xa3
21 e7



21 ♗c5

21 ... ♗xc3?! 22 ♜e6 ♜a3 23 ♜c1 Δ ♜h6.

22 ♜f6 gxf6

22 ... ♜d6 23 ♜xg7+ ♜xg7 24 ♗e5+ ♜g8 25 ♗g5+ ♜f7 26 ♗f4+ ♜g8 27 ♗g5+=.

V EUROPEAN TEAM CHAMPIONSHIP PRELIMINARIES - SECTION 3

		Norm											
No	BOARD 1 - C.A. McNAB	4½	1	2	3	4	5	6	7	8	9	10	Pts
1	Quaresma, C R (POR)	2420	◆						½				
2	Rumiancevas, B GM (LIT)	2535		◆		½			½		½		
3	De Ruiter, T (NLD)	2390			◆		0	½	0			½	
4	Morris, C F (WLS)	(2380)		½		◆	½	0	½				
5	Neuvonen, O (FIN)	2435			1	½	◆		½			0	
6	Roose, J (BEL)	2365			½	1		◆	½		½	½	
7	McNab, C A IM (SCO)	2520	½	½	1	½	½	½	◆			½	
8	Mraz, M IM (CZE)	2525								◆		0	
9	Timoschenko AG IM (UKR)	2505		½				½			◆	½	
10	Boissel, B (FRA)	(2510)			½		1	½	½	1	½	◆	

No	BOARD 2 - P.M. GIULIAN	5½	1	2	3	4	5	6	7	8	9	10	Pts
1	Goncalves, J A C (POR)	2485	◆		½				½				
2	Uogele, A B IM (LIT)	2480		◆	½	1		½	½			½	
3	Gronveld, C IM (NLD)	2475	½	½	◆	½		0	½	0		½	
4	Dishman, S (WLS)	(2280)		0	½	◆		½	½	0		½	
5	Koskivirta, O (FIN)	2415					◆		½	0		0	
6	Van de Craen (BEL)	(2200)		½	1	½		◆	1			½	
7	Giulian, P M IM (SCO)	2415	½	½	½	½	½	0	◆		½	0	
8	Trapl, J IM (CZE)	2535			1	1	1			◆			
9	Bennderskij, W G (UKR)	2200							½		◆		
10	Herb, P (FRA)	(2370)		½	½	½	1	½	1			◆	

No	BOARD 3 - A.P. BORWELL	7	1	2	3	4	5	6	7	8	9	10	Pts
1	Rosa, A R B (POR)	(2385)	◆		½				1			½	
2	Milvydas, V IM (LIT)	2475		◆			½					½	
3	Quakkelaar, M J (NLD)	2505	½		◆		0	1	0	0			
4	Macdonald, J (WLS)	(2200)				◆			0	0			
5	Lehto, A (FIN)	2395		½	1		◆		0				
6	Joseph, F (BEL)	2235			0			◆		½			
7	Borwell, A P IM (SCO)	2360	0		1	1	1		◆				
8	Sevecek, R IM (CZE)	2530			1	1		½		◆			
9	Muraviev, S (UKR)	(2200)									◆		
10	Feroul, M IM (FRA)	2455	½	½								◆	

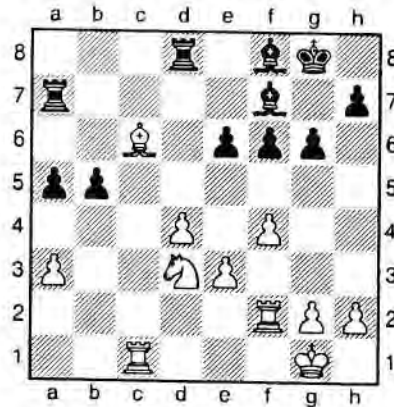
No	BOARD 4 - D.J. STEWART	7	1	2	3	4	5	6	7	8	9	10	Pts
1	Pinto, N M F B (POR)	(2300)	◆			1		½	1		½		
2	Petratis, G (LIT)	(2200)		◆		1							
3	Rakhorst, W W J (NLD)	2470			◆		½					0	
4	Adams, M (WLS)	(2200)	0	0		◆		½					
5	Jäderholm, B (FIN)	2380			½		◆		½				
6	Hannecart, M (BEL)	(2200)	½			½		◆				½	
7	Stewart, D J (SCO)	2410	0				½		◆	0			
8	Spodny, J IM (CZE)	2445							1	◆			
9	Lepichow, A G (UKR)	2515	½								◆		
10	Spitz, P (FRA)	(2200)			1			½				◆	

- 23 ♖xf6+ ♔g8
- 24 ♜b4 ♖d6
- 25 ♜c6 ♖d7
- 26 h4 a5
- 27 ♜xc4 dxc4
- 28 ♜e5 ♖g4
- 29 ♜g5+ ♖xg5
- 30 hxg5 a4
- 31 g6 hxg6
- 32 ♖xg6+

- 18 f4 ♖c7
- 19 ♖c2 g6
- 20 ♜f3 ♜g7
- 21 ♜e4 ♜ac8
- 22 ♜e5 ♜a8
- 23 ♖c3 f6
- 24 ♜d3 ♜f7
- 25 ♖c5 ♖d7
- 26 ♜f2 a5
- 27 b5 cxb5
- 28 ♖b6 ♜a6
- 29 ♖xb7 ♖xb7
- 30 ♜xb7 ♜a7
- 31 ♜c6 ♜f8

White has to settle for the draw. Trying to win by 32 ♖xg6+ ♔h8 33 ♖f6+ ♔g8 34 g4 a3 35 g5 a2 36 g6 a1=♖+ 37 ♔g2 comes unstuck after ♜xc7! 38 ♖xe7 ♖a7-+.

½ ½
♖♖♖♖



Finally, another lucky break.

White: M. Vigneron (FRA)

Black: G.D. Pyrich (SCO)

QGD Cambridge Springs D52

- 1 d4 ♜f6
- 2 c4 e6
- 3 ♜g5 d5
- 4 ♜c3 c6
- 5 e3 ♜bd7
- 6 ♜f3 ♖a5
- 7 ♜d2 ♜b4
- 8 ♖c2 0-0
- 9 ♜e2 dxc4
- 10 ♜xf6 ♜xf6
- 11 ♜xc4 ♖c7
- 12 a3 ♜e7
- 13 0-0 ♜d8
- 14 b4 ♜d7
- 15 ♜c4 ♜xc4
- 16 ♖xc4 ♜f6
- 17 ♜ac1 ♜c8

Until now, a fairly uneventful game. Black has survived his cramped position and a draw is the likely outcome, but.....

32 ♜b2??

Clerical error - White thought Black's last move had been ♜f7-e8 (6758) rather than ♜g7-f8 (7768).

- 32 ♜xa3
- 33 ♜xb5 ♜xc1
- 34 ♜xc1 ♜c8
- 0 1

V EUROPEAN TEAM CHAMPIONSHIP PRELIMINARIES - SECTION 3

Norm												Pts	
No	BOARD 5 - T.J. CRAIG	6	1	2	3	4	5	6	7	8	9		10
1	Cordeiro, V L (POR)	2350	◆	1	½	½	0			1			
2	Slekys, E (LIT)	2305	0	◆									
3	Raymaekers, R C H (NLD)	2450	½		◆	½	1	½		½	½		
4	Phillips, G H (WLS) (2200)		½		½	◆	½	0				½	
5	Hesse, G (FIN)	2375	1		0	½	◆	1					
6	Pauwels, R (BEL)	2275			½	1	0	◆	½				
7	Craig, T J (SCO)	2335						½	◆				
8	Smrcka, F IM (CZE)	2465	0		½					◆	½		
9	Kotenko, G J (UKR)	2400			½					½	◆		
10	Berriot, B (FRA)	2280				½						◆	

Norm												Pts	
No	BOARD 6 - G.D. PYRICH	7	1	2	3	4	5	6	7	8	9		10
1	Azevedo, J M (POR)	2295	◆			½				½			
2	Marcinkevicius (LIT) (2200)			◆		1							
3	Hotting, A (NLD)	2445			◆	½	½	1				1	
4	Sinnett, G (WLS) (2200)		½	0	½	◆	½	0	½			½	
5	Raivio, P (FIN)	2335			½	½	◆		0				
6	De Coninck, G (BEL) (2440)				0	1		◆	0				
7	Pyrich, G D (SCO)	2275	½			½	1	1	◆			1	
8	Hadraba V (CZE)	2445								◆			
9	Gal, M (UKR)	2405									◆		
10	Vigneron, M (FRA) (2200)				0	½						◆	

Norm												Pts	
No	BOARD 7 - C.R. BEECHAM	6	1	2	3	4	5	6	7	8	9		10
1	Peres, J C M (POR) (2200)		◆			0	1	½	1				
2	Kupsys, A (LIT)	2445		◆	½	1	1	½			½		
3	Poel, E (NLD)	2305		½	◆	½		½	0	0	½	½	
4	Thomas, M (WLS) (2340)		1	0	½	◆	1	0	½		½	½	
5	Sabel, H (FIN)	2340	0	0		0	◆						
6	Van de Wynkele, H (BEL)	2345	½	½	½	1		◆	1				
7	Beecham, C R (SCO)	2270	0		1	½		0	◆			½	
8	Jezeek, J (CZE)	2495			1					◆	0	½	
9	Bondar, W N IM (UKR)	2420			½	½				1	◆		
10	Grizou, R (FRA)	2440		½	½	½			½	½		◆	

Norm												Pts	
No	BOARD 8 - D.M. JENKINS	6	1	2	3	4	5	6	7	8	9		10
1	Neves, J J A C (POR) (2200)		◆					0					
2	Dambrauskas, V IM (LIT)	2490		◆									
3	Lambers, G H (NLD)	2390			◆				1			0	
4	Garcia, J (WLS) (2200)					◆	0	½					
5	Luoma, J (FIN)	2360				1	◆						
6	Beniest, R (BEL) (2200)		1			½		◆	½	½	0	1	
7	Jenkins, D M (SCO)	2325			0			½	◆	0		0	
8	Teichmann, C (CZE)	2425						½	1	◆			
9	Chichlow, I I (UKR)	2475						1			◆		
10	Pecot, L (FRA)	2505			1			0	1			◆	

V EUROPEAN TEAM CHAMPIONSHIP PRELIMINARIES - SECTION 3

Norm												Pts	
No	BOARD 9 - R.W.M. BAXTER	7	1	2	3	4	5	6	7	8	9		10
1	Marques, J L S (POR) (2215)		◆			½					½		
2	Agejevas, A IM (LIT)	2455		◆							0		
3	Plomp, M P (NLD)	2440			◆	1				½	½		
4	Baker, A P (WLS) (2200)		½		0	◆		0	1				
5	Kilpi, T (FIN)	(2200)						◆			½		
6	De Beck, E (BEL)	(2200)				1		◆		½	0		
7	Baxter, R W M (SCO)	(2260)			½	0		½	◆		½		
8	Sedlacek, O (CZE)	(2275)	½	1	½			½	1	◆			
9	Meshebizkij, S I (UKR)	2455								½	◆		
10	Rousselot, B (FRA)	2375										◆	

Norm												Pts	
No	BOARD 10 - T. THOMSON	6	1	2	3	4	5	6	7	8	9		10
1	Ferreira, J G (POR)	2235	◆	½	0	1							
2	Rubinas, P (LIT)	(2380)	½	◆									
3	Van de Kley, C (NLD)	2430	1		◆		1				½		
4	Griffith, M J (WLS)	2230	0			◆	0		0				
5	Jaatinen, P (FIN)	2340			0	1	◆		½			½	
6	Laurent, C (BEL)	2250						◆	0				
7	Thomson, T (SCO)	(2200)				1	½	1	◆				
8	Urban, J (CZE)	2395								◆			
9	Miljutin, O P IM (UKR)	2435			½						◆		
10	Del Gobbo, M (FRA)	2520					½					◆	

Norm												Pts	
No	BOARD 11 - I.A. MARKS	7	1	2	3	4	5	6	7	8	9		10
1	Peres, J L M (POR) (2200)		◆		0	1	½		1				
2	Sutkus, V (LIT)	2270		◆							0		
3	Pillhock, U D (NLD)	2440	1		◆	1	½		1		1		
4	Clifford, N (WLS) (2200)		0		0	◆	0		1			0	
5	Hietanen, P (FIN)	2320	½		½	1	◆		½			½	
6	Deschamp, G (BEL)	(2200)						◆	1			0	
7	Marks, I A (SCO)	(2200)	0		0	0	½	0	◆	½	½	0	
8	Lizan, L (CZE)	2410		1					½	◆			
9	Pawlenko, J B (UKR)	2420			0				½		◆		
10	Muller, J (FRA) (2200)					1	½	1	1			◆	

Norm												Pts	
No	BOARD 12 - C.F. BOYLE	7	1	2	3	4	5	6	7	8	9		10
1	Rodrigues, J C (POR) (2200)		◆		½			½		0			
2	Vaitonis, V (LIT)	2465		◆			½	½		½			
3	Etman, M D (NLD)	2300	½		◆	1	0	1	½	0		0	
4	Grier, C (WLS)	2200			0	◆	0	½	½				
5	Johansson, C-E (FIN)	2320		½	1	1	◆	½		½			
6	Rodriguez, M (BEL)	2385	½	½	0	½	½	◆	1	½			
7	Boyle, C F (SCO)	(2200)			½	½		0	◆	0		0	
8	Pletanek, J (CZE)	2405	1	½	1		½	½	1	◆		½	
9	Stawnitschuk, A P (UKR)	(2200)									◆		
10	Spitz, C (FRA)	(2200)			1					1	½	◆	

CCYB OPENINGS MONOGRAPHS

	Inf Ref	Pages
Caro-Kann (3 e5)	B12	140
Caro-Kann (4 ... Nf6)	B15-16	96
Ruy Lopez (3 ... Nd4)	C61	128
Benoni Taimanov (8 Bb5)	A67	116
English (1 e4 e5 2 Nc3 Bb4)	A21	96
Scotch-Goring Gambit	C44	128
Semi-Slav Botvinnik	D44	244
Sicilian Najdorf (7 ... Be7)	B98-99	292
Dutch Leningrad (7 ... Nc6)	A89	155
Exchange Ruy Lopez (4 Bxc6)	C68	175
QGD Cambridge Springs	D52	74
English - Flohr-Mikenas	A18-19	145
French - Winawer	C15-19	120
Grünfeld - Exchange	D85	75
English Opening - Lukins	A21	60
Italian Game	C53-54	103
French Tarrasch (4 ... a6)	C03	215
Ruy Lopez - Arkhangelsk	C78	283
King's Indian - Sämisch	E80-89	330
Queen's Gambit Accepted	D20-29	179
Accel. Dragon Maroczy	B36-39	147
Caro-Kann Exchange	B13	199
Sicilian Labourdonnais	B32	269
Pirc - Czech (3 ... c6)	B07	203
Accelerated Dragon	} N B34-35	368
Sicilian Najdorf 7 ... Qb6	} E B97	148
Caro-Kann Classical 4 ... Bf5	} W B18-19	176
KI Benoni (4 pawns)	} I A66-69	80
Nimzo-Capablanca	} 9 E32-39	327
Sicilian Closed, Vol. 1	} 9 B23	176
Sicilian Closed, Vol. 2	} 6 B24-26	234

CHESS DIGEST

Black Defensive System 1 ... d6, Solts	£11.95
Catalan, Smith/Hall	£10.95
English Defence (1 ... b6), Solts	£11.95
Goring Gambit Acc & Dec, Smith/Hall	£11.95
Winning with King's Gambit Accepted - Vol 1	£11.95
Winning with King's Gambit Declined - Vol 2	£11.95
Lasker's Def to Queen's Gambit, Solts	£11.95
Modern Defence, Smith/Hall	£11.95
Noteboom Variation, Solts	£ 9.95
Tchigorin Defence, Solts	£10.95
Veresov Attack, Smith/Hall	£11.95
Winning against 1 e4, Tangborn	£11.95
Winning against Flank Openings, Tangborn	£9.95
Winning White Repertoire, Tangborn	£12.95
Trompovsky Attack, Solts	£11.95
Hennig Shara Gambit, Smith/Hall	£11.95
Ruy Lopez Exchange, Solts	£11.95
Slav-Winawer Counter, Schiller	£11.95
Grand Prix Attack, Smith/Hall	£11.95
Beating Ruy Lopez with Fianchetto Var, Solts	£10.95
Lisitsin Gambit, Gordon	£9.95
Queen's Gambit Accepted, Smith/Hall	£11.95
How to play Sicilian v all White Possibilities	£10.95
How to Play Torre Attack (2nd Ed) - Schiller	£12.95
Evans Gambit v Two Knights, Harding	£12.95
Sicilian Scheveningen (2nd Ed.), Solts	£11.95
How to Play Fischer Attack v Sicilian Najdorf	£11.95

TRENDS

These excellent openings booklets contain 100 recent games selected by IMs and GMs for their theoretical ideas and importance and include improvements and suggestions. Strongly recommended for players seeking new opening ideas. The following are available from QBS for £3.95 each (or £10 for any 3), incl. postage and packing.

- Benko Gambit Volume 2
- Torre/Trompovsky, Volume 2
- Classical Pirc Volume 2
- English ... e5 Volume 2
- King's Indian 4 Pawns Attack
- QGD Tarrasch/Semi-Tarrasch
- Scheveningen
- Advance Caro-Kann Volume 2
- French Advance Volume 2
- Ruy Lopez Anti-Marshall
- Caro-Kann Panov Botvinnik Vol.2
- Grünfeld Exchange Volume 2
- Sicilian Najdorf Volume 2
- Catalan
- QGA Volume 2
- French Tarrasch Volume 2
- French Winawer Volume 2
- Closed Spanish Volume 2
- Caro-Kann 5 Nxf6 Volume 2
- Alekhine Volume 2
- Elephant Gambit
- French Classical Vol. 2)
- Anti Sicilian) P
- Sicilian -Sveshnikov Vol. 2) U
- Sicilian - Richter Rauzer Vol. 2) B
- Spanish - Exchange Vol. 2) L
- QGD-Tartakower/Anti-Tartakower) I
- QGD - Without Tartakowers) S
- King's Indian g3, Vol. 2) H
- Caro Kann 4 ... Nd7, Vol. 2) E
- Queen's Indian) D
- Sicilian Sozin, Vol. 2)
- Torre & Trompovsky, Volume 3) I
- English ... e5, Volume 2) 9
- Sicilian Taimanov, Volume 2) 9
- King's Indian Attack) 5
- Slav, Volume 2 }
- Italian 3 Bc4, Volume 2 } N
- Benoni : Czech & Schmid, Vol 2 } E
- Semi-Slav Meran, Volume 2 } W
- Reti, Volume 2 }
- Bogo-Indian, Volume 2 } I
- Classical/Stonewall Dutch, Vol 2 } 9
- Petroff, Vol 3 } 9
- Scotch, Vol 2 } 6

All publications shown on this page can be obtained from Qualitext Business Services with 10% discount for Members/Subscribers.

Top Quality Service!

Qualitext

Business Services

Postal Chess Supplies from the specialists!

Best available prices!

This service is for all postal chess players, with especially favourable terms available for Scottish CCA members and subscribers to the Scottish CCA Magazine. (Overseas customers are very welcome but please add 10% to cover extra postal costs.)

Stationery for Correspondence Chess

Prices

(incl post/packing)

- Scottish CCA International Postcards (the best) per 100 cards £ 3.25
per 250 cards £ 7.50
per 500 cards £14.00
- Scottish CCA Scorecards (2 games per card) per 25 cards £ 2.00
per 100 cards £ 6.50
- Window Envelopes (for SCCA Scorecards) per 100 envelopes £ 2.00
- Correspondence Chess record sheets per 50 sheets £ 3.00
- Ring Binder (for containing CC record sheets) £ 2.50
- "Slot-in" boards/sets per 12 boards/sets £12.00
Vinyl album for storing each £ 3.00
- "Adhering" boards/sets per 12 boards/sets £14.50
Vinyl album for storing each £ 2.50
- "Peel & Stick" Diagrams/Sets (various combinations) Sample/Quotations on enquiry

Correspondence Chess Magazines/Booklets

Prices per annum

Price for single edition

Sample copy of earlier edition

- Scottish CCA Magazine (4 issues p.a.) £ 9 p.a.* £ 2.50 Free!
- Fernschach International (11 editions p.a.) £22 p.a. £ 2.25 £ 1.50
- Correspondence Chess YearBook (3 editions p.a.) £36 p.a. £13 £10
- CCYB Opening Monographs - Booklet (under 100 pages) £ 8 -
- Booklet (100 to pages) £10 -
- Booklet (over 250 pages) £12 -

* £15 p.a. for overseas subscribers (4 issues) or £25 for 2 years (8 issues)

(These prices include postage/delivery)

Scottish CCA Members and Magazine Subscribers are entitled to a special 10% discount on all items shown in this panel (except for the Scottish CCA Magazine).

Chess Books

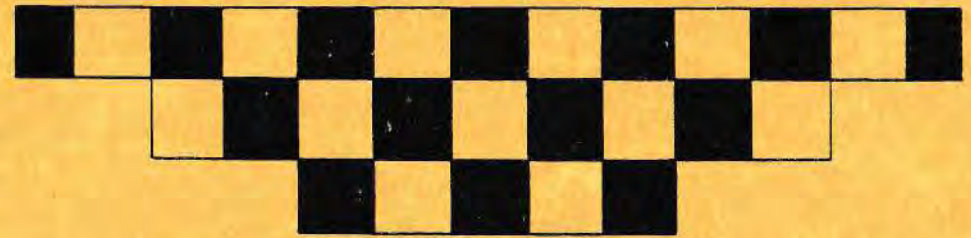
Supplies of Batsford, Cadogan, Trends, Chess Digest and other chess books are available from Qualitext Business Services. A selection of books published recently, which are considered to be useful for postal chess, are shown in the panels on the previous page and overleaf. Scottish CCA Members and Magazine Subscribers are entitled to a special 10% discount from Qualitext Business Services on orders placed for all chess books.

Enquiries, orders and cheques made payable to "Qualitext Business Services" (whose proprietors are Moira and Alan Borwell), to 8 Wheatfield Avenue, Inchture, Perthshire, PH14 9RX, Scotland. We can be contacted by telephone from 3pm to 10pm daily on 01828-686556, fax 01828-686004, Email: 100737.766@compuserve.com.

QUALITEXT BUSINESS SERVICES

Although we supply all chess books, we have selected the following, published in the last 2 years, as being of special relevance or interest to postal chess players. New publications (denoted ●)

Published by		Magazine Review		
Batsford	● Alexander Alekhine's Best Games - <i>Alekhine (Kasparov/Nunn)</i>	£17.99	54	
	● Anatoly Karpov's Best Games - <i>Karpov</i>	£14.99	54	
	Beating the Anti-Sicilians - <i>Joe Gallagher</i>	£13.99	47	
	Beating the Sicilian 3 - <i>Nunn/Gallagher</i>	£14.99	52	
	Blackmar-Diemer Gambit - <i>Gary Lane</i>	£10.99	52	
	Complete Benoni - <i>Lev Psakhis</i>	£15.99	50	
	Complete Vienna - <i>Tseitlin/Glazkov</i>	£12.99	50	
	Garry Kasparov's Fighting Chess - <i>Kasparov/Speelman/Wade</i>	£14.99	52	
	John Nunn's Best Games - <i>John Nunn</i>	£17.99	49	
	Latvian Gambit - <i>Tony Kosten</i>	£12.99	50	
	Main Line King's Indian - <i>Nunn/Burgess</i>	£17.99	53	
	My 60 Memorable Games - <i>Bobby Fischer</i>	£14.99	49	
	● New Ideas in the Alekhine Defence - <i>Burgess</i>	£10.99	54	
	New Ideas in the Queen's Gambit Accepted - <i>Glenn Flear</i>	£14.99	47	
	● New Ideas in the Sveshnikov Sicilian - <i>Neverov/Marusenko</i>	£12.99	54	
	Opening Repertoire for the Attacking Player - <i>Keene/Levy</i>	£ 9.99	49	
	Opening Repertoire for White - <i>Keene/Jacobs</i>	£10.99	52	
	● Positional Play - <i>Dvoretsky & Yusupov</i>	£17.99	54	
	Queen's Gambit for the Attacking Player - <i>Burgess & Pedersen</i>	£13.99	48	
	Secrets of Minor Piece Endings - <i>John Nunn</i>	£17.99	52	
	Secrets of Spectacular Chess - <i>Levitt/Friedgood</i>	£14.99	50	
	Technique for the Tournament Player - <i>Dvoretsky/Yusupov</i>	£17.99	50	
	The Giuco Piano - <i>Gufeld/Stetsko</i>	£12.99	53	
	The Sämisch King's Indian - <i>Joe Gallasher</i>	£14.99	51	
	Think Like a Chess Master - Gambits - <i>Graham Burgess</i>	£ 7.99	50	
	Think Like a Chess Master - Planning - <i>Neil McDonald</i>	£ 7.99	50	
	Think Like a Grandmaster - <i>Alexander Kotov</i>	£13.99	51	
	Vishy Anand - Chess Super Talent - <i>David Norwood</i>	£12.99	52	
	● Winning at Correspondence Chess - <i>Tim Harding</i>	£14.99	54	
	Winning Endgame Technique - <i>Beliaevsky/Mikhalchishin</i>	£13.99	51	
	Winning with the Benko - <i>Byron Jacobs</i>	£12.99	49	
	Winning with the Fischer-Sozin Attack - <i>Gary Lane</i>	£12.99	47	
	Winning with the French - <i>Wolfgang Uhlmann</i>	£12.99	49	
	Winning with the Kalashnikov - <i>Neil McDonald</i>	£12.99	49	
	● Winning with the Kan - <i>Mortazavi</i>	£12.99	54	
	Attack with Mikhail Tal - <i>Tal & Damsky</i>	£10.99	47	
	Chess for Tomorrow's Champions - <i>J.N. Walker</i>	£ 9.99	51	
	● Chess in the Fast Lane - <i>Bill & Michael Adams</i>	£12.99	54	
	Chess Training - <i>Nigel Povah</i>	£10.99	49	
	English Opening - Symmetrical - <i>Vladimir Bagirov</i>	£15.99	50	
	Kasparov v Anand - World Chess Championship - <i>King</i>	£ 8.99	52	
	New Bogo-Indian - <i>Shaun Taulbut</i>	£12.99	49	
	Nimzo-Indian Defence - Classical - <i>Ivan Sokolov</i>	£10.99	49	
	● Opening Repertoire for the Attacking Player - <i>Gufeld</i>	£14.99	54	
	● Play the French - <i>Watson</i>	£14.99	54	
	Taimanov's Selected Games - <i>Mark Taimanov</i>	£14.99	51	
	Test Your Chess - Piece Power - <i>J.N. Walker</i>	£ 9.99	50	
	The Chess Teacher - <i>Phillips</i>	£10.99	52	
	The Modern Chess Self-Tutor - <i>David Bronstein</i>	£10.99	53	
	The Open Spanish - <i>Krasenkov</i>	£12.99	52	
	The Sorcerer's Apprentice - <i>Bronstein & Fürstenberg</i>	£14.99	52	
	Timman's Selected Games - <i>Timman</i>	£14.99	52	
	Cadogan			



MAKE THE RIGHT MOVE



WE CAN HELP



General Accident

World Headquarters, Pitheavlis, Perth, Scotland PH2 0NH