

- Excellent Games / Articles
- SCCA / ICCF Rating Lists
- Progress Report on CC Olympiads
- Bernard Partridge Memorial Semi-Finals
- Announcement of ICCF World Cup

£3.00

No. 69, Spring 2000

ON PAPER OR ON DISK

ELECTRONIC BOOKS

- Chess Informant 1-77
- Encyclopaedia of Chess Openings, volumes A (3rd ed.) B (4th ed.) C, D, E
- 27 Monographs of Chess Openings
- Small Encyclopaedia of Chess Openings
- Anthology of Chess Combinations

In the
Chess Informant
Reader

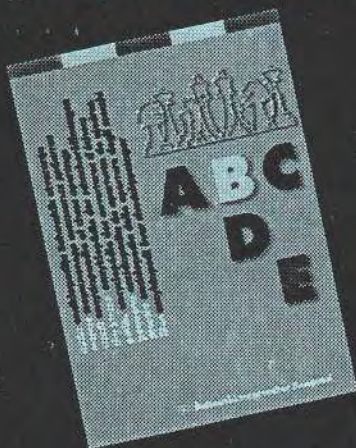
Available

Chess Informant 77

The **BEST** games annotated by the **BEST** chess players
The **BEST** of Chess Informant — Anatoly Karpov
The **BEST**

SMALL ENCYCLOPAEDIA OF CHESS OPENINGS

*You can't and need not know it all.
But all you need to know is here!*



Chess Informant

ON THE INTERNET <http://www.sahovski.com>

www.sahovski.co.yu

Office-Bearers 1999/2000

President & Treasurer

David A. Kilgour,
"Willowbank",
Peebles Road,
Galashiels, TD1 1TH.
Tel. 01896-755576
Email: viscalc@spreads.freemove.co.uk

Vice President

Iain Mackintosh,
7 Tullylumb Terrace,
Perth, PH1 1BA.
Tel. 01738-623194 or 623777
Email: iainmack@cix.compulink.co.uk

Secretary

Iain Sneddon,
6 Birkscarm Place,
Bourtreeshill,
Irvine, Ayrshire, KA11 1ED.
Tel. 01294-214035
Email: iainsneddon@breathe.co.uk

Assistant Secretary

Jim Anderson,
162 Fountainbleau Drive,
Dundee, DD4 8BJ.
Tel. 01382-501649
Email: james.anderson3@virgin.net

International Secretary

George D. Pyrich,
13 Ardgartan Court,
Balfarg,
Glenrothes,
Fife, KY7 6XB.
Tel/Fax 01592-749062
Email: GeorgePyrich@compuserve.com

Asst International Secretary

Tom Thomson,
8 Swallow Crescent,
Buckhaven,
Fife, KY8 1HH.
Tel. 01592-581354
Email: robertbruce@cablenet.co.uk

Grading Officer

Raymond W.M. Baxter,
63 Orchard Brae Avenue,
Edinburgh, EH4 2UR.
Tel. 0131-332-4607

Publicity & Membership Officer

Bernard Milligan, (& Games Ed)
15 Bothwell Court,
Hawick,
Roxburghshire, TD9 7EP.
Tel/Fax 01450-370507

Magazine Editor

Alan P. Borwell,
8 Wheatfield Avenue,
Inchture,
Perthshire, PH14 9RX.
Tel. 01828-686556
Fax 01828-686004
Email: alanp@borwelliccf.freemove.co.uk

Editorial

by Alan Borwell

No. 69
Spring 2000

Sorry, folks, but we are rather late with this edition . . . but the weather is more like early Spring than Summer!

However, the good news is that both the SCCA and ICCF rating lists are included earlier than usual, with the ICCF list now being published twice per annum. Raymond Baxter, our SCCA Grading Officer, should be congratulated for his excellent work and for his explanation of the respective SCCA/ICCF ratings.

The 1999/2000 Scottish Championship looks like being a very close finish with 4 players still in contention and only a small number of games remaining. Of course, there are not many results in events started this year.

We have the second of John Knudsen's fascinating articles on the famous Swedish IM, Sture Nyman, who died last year.

Although it seems rather unlikely that our Olympiad Final team will emulate our previous Final medallists, it is competing well with a 50% score, ahead of Brazil, Netherlands, Canada and Qatar and level with Czech Republic! Germany is the clear leader, but Lithuania, Austria and Latvia are also doing well. In the XIII Preliminaries, Scotland also has 50% but seem rather unlikely to achieve a Top 2 promotion placing, but there are many unfinished games.

The next ICCF World Cup XII has been announced and details can be found on page 33 and on the iccf.com www site. This World Cup is likely to have a large number of Email sections and there are excellent prizes. The closing date for entries is 30/6/00 and preliminary group sections of the tournament are due to start on 1/10/00.

Full details of ICCF tournaments are given on page 35 with an entry form on page 34. The ICCF Email tournaments are very popular and are started continuously without any significant delay between entry and starting dates. It would be good to see more Scottish CCA players in these international tournaments - only 6 games in Open and Higher Class sections!

When you read this edition, the AGM will have taken place and you will be able to read an early report on the main decisions made by visiting our SCCA website at www.users.globalnet.co.uk/~scca

INDEX OF CONTENTS

	Pages		Pages
Editorial	1	Games Section	21/26
Championships/Candidates	2	NBC 30	27/30
Premiers/Openings/Majors/Minors	3	Bernard Partridge Memorial	31
Quartets/SCCA League 2000	4	1 st North Sea Team Tourney	31
Challenge Tournament	5	ICCF World Cup XII	33
Nyman [by John C. Knudsen]	6/10	ICCF Tournaments/Thematics	33
New Books	11/12	Friendly Internationals	34
ChessBase 7 [Part 5]	13	ICCF Tourney Information	35
The Corresponding Difference	14/17	XII Olympiad Final	36/37
Grading List 2000	18/20	XIII Olympiad Preliminaries	38/39
100 Club	20	VI Euro TT Preliminaries	40

Subscription Rates 1999/2000:

Life Member £75 (inc Magazine in first year); SCCA Magazine only £12 (4 editions pa); Annual Member £15 (inc Magazine); Overseas subscription £20pa (inc airmail postage)

Visit the SCCA Website at
www.users.globalnet.co.uk/~scca

SCOTTISH CCA CHAMPIONSHIP 1999/2000

[Controller - A. Maxwell]

No	Name	1	2	3	4	5	6	7	8	9	10	11	Pts
1	A.N. MACMILLEN	◆	1			0	½	0	½		0	0	
2	D.R.R. ELLIS	0	◆		1	0		½	½	0		0	
3	I. MACKINTOSH			◆	1	½	1	1	1	0	1	½	
4	F. TEUNISSE		0	0	◆	0	0	0	0	0	0	0	
5	I.F. REEMAN	1	1	½	1	◆	1	½	1	½		½	
6	A.T. HISLOP	½		0	1	0	◆	0	0	0	0	½	
7	D.R. CUMMING	1	½	0	1	½	1	◆	0	0	0	1	5
8	C.R. BEECHAM	½	½	0	1	0	1	1	◆	0	0	0	4
9	T. THOMSON		1	1	1	½	1	1	1	◆	0	1	
10	C.J. LENNOX	1		0	1		1	1	1	1	◆	1	
11	B. MILLIGAN	1	1	½	1	½	½	0	1	0	0	◆	5½

Please send games, with annotations, to the SCCA Magazine Games Editor:-
Bernard Milligan,
15 Bothwell Court,
Hawick,
Roxburghshire,
TD9 0BA.

SCOTTISH CCA CHAMPIONSHIP 2000/2001

[Controller - A. Maxwell]

No	Name	1	2	3	4	5	6	7	8	9	10	11	Pts
1	I.F. REEMAN	◆											
2	I. MACKINTOSH		◆										
3	D.R. CUMMING			◆									
4	D.R.R. ELLIS				◆								
5	A.T. HISLOP					◆							
6	B. MILLIGAN						◆						
7	I. SNEDDON							◆					
8	A. ARMSTRONG								◆				
9	A. BROWN									◆			
10	C.R. BEECHAM										◆		
11	M. MAY											◆	

CANDIDATES 1999/2000

[Controller: C.R. Beecham]

Section A

No		1	2	3	4	5	6	7	Pts
1	D.R. CUMMING	◆	1	1		0	½	-	
2	H.S. FLOCKHART	0	◆	0	½	0	½	-	1
3	M. JESSING	0	1	◆	1	½	1	-	3½
4	G. SAXTON		½	0	◆	½		-	
5	I. SNEDDON	1	1	½	½	◆	1	-	4
6	B. THOMPSON	½	½	0		0	◆	-	
7	C. WALLACE	-	-	-	-	-	-	◆	w/d

Section B

No		1	2	3	4	5	6	7	Pts
1	A.C. BROWN	◆	1	1	1	½	1	½	5
2	W.M. COOK	0	◆	1	1	0	0	0	2
3	J. COPLEY	0	0	◆	0	½		0	
4	S. HILTON	0	0	1	◆	½	0	0	1½
5	G. LLOYD	½	1	½	½	◆	½	½	3½
6	B. MILLIGAN	0	1		1	½	◆	½	
7	I. SNEDDON	½	1	1	1	½	½	◆	4½

CANDIDATES 2000/2001

[Controller: C.R. Beecham]

Section A

No		1	2	3	4	5	6	7	Pts
1	A. BROWN	◆							
2	B. COOK		◆						
3	B. GOODWIN			◆					
4	D. HARVEY				◆				
5	I. SNEDDON					◆			
6	B. THOMPSON						◆		
7	S.M. YOUNG							◆	

Section B

No		1	2	3	4	5	6	7	Pts
1	I.S. CAMPBELL	◆							
2	J. COPLEY		◆						
3	D.R. CUMMING			◆					
4	D. EDNEY				◆				
5	S. HILTON					◆			
6	G. LLOYD						◆		
7	I. SNEDDON							◆	

PREMIER TOURNAMENTS 2000 [Controller: Alan Hind]

SECTION A

No		1	2	3	4	5	6	7	8	Pts
1	M. EDWARDS	◆					1			
2	D. HARVEY		◆		1					
3	J.M. HERRIES			◆						
4	T.F. McAINSH		0		◆		0			
5	I.W.S. MITCHELL					◆				
6	G.A.A. MURPHY	0			1		◆			

SECTION B

No		1	2	3	4	5	6	7	8	Pts
1	D. CRICHTON	◆			1					
2	M. EDWARDS		◆							
3	S. HILTON			◆						
4	A. KNOX	0			◆	0				
5	G. LLOYD				1	◆				
6	G.R. McDONALD						◆			

SECTION C

No		1	2	3	4	5	6	7	8	Pts
1	R. BEACON	◆								
2	A.G.E. BIRD		◆							
3	C. DOWELL			◆						
4	R. MALCOLMSON				◆					
5	G.A.A. MURPHY					◆				
6	S.M. YOUNG						◆			

Results of games in all tournaments should be reported to the Tournament Controller immediately on completion of each game. If any of the results shown against your name in this magazine are incorrect, please inform your Tournament Controller, so that a correction can be made in the next issue.

OPENINGS TOURNAMENTS 2000 [Controller: Iain Sneddon]

No	Section A	1	2	3	4	5	6	Pts
1	J. CASSIDY	◆						
2	D. CRICHTON		◆					
3	S. HILTON			◆				
4	R. LOUGHRAN				◆			
5	A.C.W. ROBSON					◆		
6	S.M. YOUNG						◆	

Opening moves are: 1 e4 c5 2 ♖f3 ♗c6 3 d4 cxd4 4 ♗xd4 g6 (Accelerated Dragon, B34)

MAJORS 2000 [Controller: Dave Savage]

No	SECTION A	1	2	3	4	5	Pts
1	R. BEACON	◆					
2	J. GRANT		◆				
3	C.R. JAMES			◆			
4	T.F. McAINSH				◆		
5	C. McINTEE					◆	

No	SECTION B	1	2	3	4	5	Pts
1	J. CASSIDY	◆					
2	R. LOUGHRAN		◆				
3	J. MORROW			◆			
4	A.R. PETRIE				◆		
5	R.E. ROUGH					◆	

No	SECTION C	1	2	3	4	Pts
1	J. ARMSTRONG	◆				
2	R.B. CROSBIE		◆			
3	J.W. KILGOUR			◆		
4	P. MacKENZIE				◆	

MINORS 2000 [Controller: Steve Hilton]

No	SECTION A	1	2	3	4	5	6	Pts
1	J. ARMSTRONG	◆						
2	D.W. COOPE		◆					
3	C. McINTEE			◆				
4	P. MOIR				◆			
5	J. RAWLINSON					◆		
6	R.E. ROUGH						◆	

Major/Minor/Quartets/Challenge Entries can be made at any time to Iain Sneddon. New pairings will be arranged when there are sufficient new players to do so.

QUARTETS 2000

[Controller: Alan Armstrong]

No	Postal Knight	1	2	3	4	Pts
1	AWI CAMPBELL	◆				
2	S. HILTON		◆			
3	J. ANDERSON			◆		
4	I. SNEDDON				◆	

No	Q205	1	2	3	4	Pts
1	P. MOIR	◆				
2	R.B. CROSBIE		◆			
3	D. SALTER			◆		
4	F. TEUNISSE				◆	

No	Q206	1	2	3	4	Pts
1	A.G.E. BIRD	◆				
2	A.C.W. ROBSON		◆			
3	P. MACKENZIE			◆		
4	A. WRIGHT				◆	

No	Q207	1	2	3	4	Pts
1	J.W. KILGOUR	◆				
2	C. McINTEE		◆			
3	G.R. McDONALD			◆		
4	D.R. CUMMING				◆	

Scottish CCA League 2000

Division 1 [Controller: Peter Jack]

A KIRKCALDY KINGS

1	T. Thomson	v E1
2	G.D. Pyrich	v D2
3	G. Saxton	v C3
4	I. Marshall	v B4
5	S. Donohoe	v F5

B FIVE BRAVE ENGLISHMEN

1	P. Coleman	v D1
2	D. Chambers	v C2
3	D. Barnes	v F3
4	A. Rawlings	v A4
5	A. Robertshaw	v E5

C PERTSHIRE CORRESPONDENTS

1	A.P. Borwell	v F1
2	I. Mackintosh	v B2
3	Dr. A.C. Brown	v A3
4	D. Harvey	v E4
5	I.W.S. Mitchell	v D5

D SOCIAL CCA

1	F. Foldvary	v B1
2	R. Baker	v A2
3	D. Price	v E3
4	S. Murray	v F4
5	B. Sheppard	v C5

E BLACK KNIGHT

1	G.R. Sprott	v A1
2	G. Phillips	v F2
3	I. Reeman	v D3
4	A.T. Hislop	v C4
5	I. Sneddon	v B5

F BUSMAN'S HOLIDAY

1	G. Lloyd	v C1
2	R. Malcolmson	v E2
3	R. Loughran	v B3
4	A. Petrie	v D4
5	C.R. James	v A5

Division 2 [Controller: Jim Anderson]

A KINGSTON-UPON THAMES

1	Chris Briscoe	v E1
2	Nick Grey	v D2
3	Jonathan Young	v C3
4	John Grant	v B4
5	Derek Coope	v F5

B SOCIAL CCA "B"

1	A. Rowland	v D1
2	Stephen Hilton	v C2
3	S Taylor	v F3
4	Geoff Rossed	v A4
5	Gavin Ross	v E5

C KNIGHT SAC

1	Tom Tait	v F1
2	Ian McKechnie	v B2
3	Robert Holland	v A3
4	Phil Tait	v E4
5	Peter Thomson	v D5

D SUPER KINGS

1	Alan Armstrong	v B1
2	Bernard Milligan	v A2
3	David Cumming	v E3
4	Robert Crosbie	v F4
5	Martin Keen	v C5

E SOCIAL CCA "C"

1	R. Ansell	v A1
2	Chris Dowell	v F2
3	Mike Gifford	v D3
4	B. Tonks	v C4
5	G. Asm	v B5

F BRUTAL REALISM

1	J.S. Murray	v C1
2	A. Thomson	v E2
3	P. Coffield	v B3
4	W. Taylor	v D4
5	P. Lewis	v A5

Please send results to your Controller immediately on completion of each game (whether it is a win, draw or loss!)

CHALLENGE TOURNAMENT

[by Bernard Milligan]

Most of the results this time out are from games carried forward from last season, although David Cumming and Peter Jack have drawn two games which started in January.

Still relatively few problems for me but one recurring one is players not sending off moves or notifying their opponents if there is likely to be a delay. Often things crop up which mean we don't have enough time to analyse our games so delays can sometimes be inevitable, but it only takes a couple of minutes to write a card and pop it in the post to let your opponents know of a likely delay. Certainly if you receive a reminder from your opponent you should be acting on it immediately. If all is still too hectic, then you can give me a call and I will try to get in touch with your opponents for you and at the very least I will be aware of any problems should any of your opponents contact me. We encourage courtesy between members and keeping your opponent informed is part and parcel of the job.

The new grades are out with this magazine and I hope you are all pleased with your ratings. Raymond Baxter does a first class job in calculating the results and grades and I for one wouldn't want to get bogged down in the complex mathematical calculations.

Our Annual General Meeting is fast approaching and the details can be found in this magazine. Why not make an extra special effort to come along this year. We value input from all of our members and it is an ideal opportunity to meet a lot of friends. At the very least you could have a go at me for any mistakes that I have made over the years. It's only once a year and Galashiels is a reasonably nice place to visit and I'm sure it beats watching the telly.

Pairings since the Winter magazine are as follows: -

Class 1

R Beacon (155) 405

Class 2

J P Jack (L15) 396,
C R James (312) 405
R Malcolmson (376) 043,

Class 3

J T Ellison (396) L15,
P Kelly (405) 155, 312, 356,
J McMenemy (043) 334, 260, 376,
J F Rutherford (356) 405
V A Proudler (L34) 043,

Class 4

A Knox (260) 043,

Results since the Winter Magazine are as follows: -

317	C Almarza-Mato	0 2	N Sapphire	Comp
155	R Beacon	1 1	O De Sousa	388
264	G Lloyd	2 0	C McIntee	391
317	C Almarza-Mato	1 0	C Dowell	316
315	A R Petrie	1 0	J Stoneman	404

315	A R Petrie	0 1	C Almarza-Mato	317
315	A R Petrie	0 1	S Hilton	114
264	G Lloyd	2 0	J Stoneman	404
376	R Malcolmson	½ ½	S Hilton	114
L15	J P Jack	1 1	D R Cumming	166

Overseas Subscribers

Subscription for one year's editions of the Scottish CCA Magazine can be obtained from the Editor for £20, or £30 for 2 years (inclusive of airmail postage). Payment in £ sterling please to the Scottish CCA.



Address Changes?

Members are asked to advise changes of address promptly to their opponents, tournament secretary, the Scottish CCA Secretary and the Editor of the SCCA Magazine, please.

☆ Membership Discounts ☆

For next season, current members may claim a £2 reduction on their membership fee for introducing one new member and £2 for each further member. A "new member" is defined as someone who has not been a member in the last two years.



NYMAN

by John C. Knudsen

IV WORLD CORRESPONDENCE CHESS CHAMPIONSHIP

1962-1965
(Continued)

Nyman,S - Dalko,N [C91]

IV World Correspondence Chess Championship, 1962-65
[notes by ICCM Allan Savage]

1.e4 e5 2.♟f3 ♘c6 3.♙b5 a6 4.♙a4 ♟f6 5.0-0 ♙e7
6.♞e1 b5 7.♙b3 0-0 8.d4 d6 9.c3 ♙g4 10.♙e3

This move introduces the Bogoljubov Variation, which was popular in the 1950s. It was played four times in the 1st World Correspondence Chess Championship final and also twice in the Dyckhoff Memorial.

10...exd4 11.cxd4 ♘a5 12.♙c2 ♘c4 13.♙c1 c5
14.♘bd2



[Almost everyone playing White chose 14.b3 including Fischer-Kortchnoi, Stockholm, 1962. The text move is inferior.]

14...♘a5?

[The key prior game was Geller-Panno, Amsterdam 1956, which went 14...♘xd2 15.♞xd2 ♙xf3 (Littlewood-Portisch, Hastings 1969, went 15...♘d7) 16.gxf3 cxd4 (Karpov, playing Black versus Timoshenko in Moscow, 1966, varied from Geller-Panno with 16...♞b6) 17.♞xd4 ♞c8 = ECO but Geller won the game. Perhaps that result (wrongly) influenced Dalko to vary here. Later games with this

line confirm this view. 14...♘xd2 is clearly the correct move that at least equalises.]

15.h3 ♙h5 16.b3 ♘c6

[It is clear that after 16...cxd4 17.♙b2 ♘c6 18.♞b1, White will recover the pawn with a favourable position.]

17.g4 ♘g4?

[Black must settle for a slight disadvantage after 17...♙g6 18.♙b2. The text move, however visually appealing, is unjustified as Black does not have sufficient development to support his attack.]

18.hxg4 ♙xg4 19.♙b2

White calmly finishes his development, not worrying about jettisoning a third pawn. The Black d-pawn will be doomed in the long run.

19...♘xd4

[Neither is 19...cxd4 20.♘f1 ♘e5 21.♘1h2 ♙h5 22.♙xd4 anything that will worry White.]

20.♙xd4 cxd4 21.♘f1 ♞c8 22.♘1h2 ♙h5 23.♞d2 ♙xf3

[If 23...♙f6 24.e5 leaves Black nothing as well. It is clear Black is fighting for a draw at best.]

24.♘xf3 ♞d7 25.♘h2 ♞h3 26.♙d3 ♞h4 27.f4 ♞c3 28.♘h1 ♞fc8 29.♞f1 ♞8c5 30.♞f3 g5?!

Desperation, but if he does nothing, White will slowly build a Kingside attack.

31.♞g1 h5 32.fxg5 ♙xg5 33.♞e1 ♞xe1 34.♞xe1 a5 35.♞d1 ♘g7 36.♞ff1 ♙e3 37.♘f3 f6 38.♙b1 a4 39.bxa4 bxa4 40.♘xd4

With the fall of the d4 pawn, the outcome is clear.

40...♙xd4 41.♞xd4 ♞h3+ 42.♘g1 ♞g5+ 43.♘f2 ♞h2+ 44.♘e3 ♞g3+ 45.♘f4 h4 46.♞xd6 ♞hg2 47.♞d7+ ♘h6 48.e5! ♞g4+

[Mating threats abound after 48...fxe5+ 49.♘xe5, so Black must seek to exchange a pair of Rooks, but the cause is hopeless.]

49.♘f5 fxe5 50.♘xe5 ♞g7 51.♞f6+ ♘h5 52.♞f5+ ♘h6 53.♞d6+ ♞7g6 54.♞xg6+ 1-0



Nyman,S – Lim Hong Gie [C18]

IV World Correspondence Chess Championship, 1962–65
[Notes by ICCM Allan Savage]

1.e4 e6 2.d4 d5 3.♘c3 ♗b4 4.e5 c5 5.a3 ♗xc3+
6.bxc3 ♖c7 7.♖g4 f5 8.♖g3 ♖e7

This line was popular at the time of this game because of its adoption in the 1st match game, Tal–Botvinnik, from the 1960 World Championship.

9.♖xg7 ♖g8 10.♖xh7 cxd4 11.♔d1 ♖bc6

Here Botvinnik played the novelty 11...♗d7 which became widely accepted as the best move and was later played successfully in many other games. Tal called this, "an artful move."

12.♖h5+

Gligoric–Petrosian, Yugoslavia 1959, continued 12.♗f3 ♖xe5 13.♗g5 ♖5g6 14.♗f6! with the idea h4 (Euwe), would have led to White's advantage. For some reason, Gie chose to follow with this "inferior" though less-known move and Nyman, perhaps fearing some improvement, varied from Gligoric with 12. ♖h5+ and still got an excellent game.

12...♗g6 13.♗f3 dxc3

Presumably, if 13...♗cxe5 14.♗b5+ is uncomfortable for Black.

14.g4! ♖ce7

After 14...fxg4 15.♗d3 the complications favour White.

15.♗d3 ♗d7 16.gxf5 exf5 17.e6!

This is a critical move that fights for the initiative; after 17.♖e1 ♖b6 Black is under less pressure.

17...♗a4

Best now may have been 17...♗xe6 18.♗d4!? ♗d7 (18...♗f7? 19.♗b5+) 19.♗xf5 0-0-0 with an unclear position.

18.♖b1 0-0-0 19.♖b4!

The activation of this Rook is a key ploy in White's strategy.

19...♗e8 20.♖h6 a5 21.♖d4 ♖c6 22.♗g5 ♖ge7

On 22...♖d6 23.♗xf5!? ♖xd4 24.♖xd4 favours White. His more active pieces, coupled with the strong e6 pawn are more than enough compensation.

23.♖h4 ♖g6 24.♖h8 ♖b6

Inferior is 24...♖xe6 25.♖xc3 The text activates the Queen and indirectly defends c3.

25.♗e3

If 25.♖xc3? ♖xg5 followed by ♖b1+.

25...♖b1+ 26.♗c1



26...♖a1?

After the text move, Black's Queen finds herself out of play for a long time. The critical move was 26...d4, when White cannot play 27.♖xd4 ♖g8! 28.♖xc6 (28.♖f6 ♖g6=) 28...♖xd3+! 29.cxd3 ♖xd3+ 30.♔e1 ♖xh8 31.♖xe7+ ♔d8 32.♖xh8 ♖e4+; Also losing for White is 27.♖xd4?! ♖xd4 28.♖xd4 ♗b5!; so best after 26...d4 is 27.♖e1 (if 27...♖a2 28.♖h6) and White retains the advantage, as the f5 pawn is weak and he threatens consolidation with ♔e2–f1.

27.♖e1 ♖g2 28.♔e2! ♖g6 29.♖h7 ♖ge7

Having driven the white Queen from its pressure on c3, the Knight returns to blockade the e6 pawn. [If instead 29...♖xh4 30.♗f4! (surprise!) 30...♖xe1+ 31.♖xe1 ♖d4+ 32.♔f1 ♖xe6 33.♖xg2 ♖xg2 34.♗e5+–.

30.♔f1 ♖g8 31.♖d4 ♗g6 32.♖xc6 ♖xc6 33.e7!

Stronger than 33.♖h6 ♖de8.

33...♗xh7

Now, if 33...♖de8 34.♗xf5+ wins.

34.exd8♖+ ♖xd8 35.♖xh7

In this position, White's active Bishops and Rooks produce too many threats and he wins easily.

35...♖a2 36.♗f4! ♖d7

No better was 36...♖f8 37.♗xf5+! ♖xf5 38.♖e8+ ♖d8 39.♖c7+ ♔b8 40.♖xd8+ ♔a7 41.♗e3+ ♔a6 42.♖a8+ ♔b5 43.♖c5+ ♔b6 44.♖xd5+ etc.

37.♖e8+ ♖d8 38.♗xf5 ♖c4+ 39.♔e1 ♖xf4 40.♖xd7 ♖d2+ 41.♔f1 ♔b8 42.♖dxd8+ ♔a7 43.♖a8+ ♔b6 44.♖e6+ ♔b5 45.a4+ ♔b4 46.♖b6+ ♔a3 47.♖xa5

♖d1+ 48.♔g2 ♖d2 49.h4 ♖d4 50.♗xb7 ♖xh4
 51.♗xd5 ♖g5+ 52.♔f1 ♖h4 53.♗bb5 ♖h1+ 54.♔e2
 ♖h5+ 55.♔d3 ♖f3+ 56.♔c4 ♖xf2 57.♔xc3 ♖e1+
 58.♔c4 ♖e2+ 59.♔d3 ♖g4+ 60.♔c3 1-0

Bergraser,V – Nyman,S [E66]

IV World Correspondence Chess Championship, 1962–65
[Notes by ICCM Allan Savage]

1.d4 ♘f6 2.♘f3 g6 3.c4 ♗g7 4.g3 0-0 5.♗g2 d6 6.0-0
 c5 7.♘c3 ♘c6 8.d5 ♘a5 9.♖d3

This is a tricky move which was popular in the 1950s, especially with ex-World Champion Euwe. Black has the usual play with ...a6 and ...b5, but after the text move, also the plan ... ♘g4–e5. This additional feature ultimately led to White abandoning 10. ♖d3 for 10. ♘d2, as the white Queen was found to be better placed on c2 anyway.

9...a6 10.♘d2

Bergraser tried 10.h3 vs. Mayanovic in Amsterdam, 1954.; The critical move is probably 10.e4 as Golumbek suggested in his notes to Platz-Benko, Budapest, 1952, in the tournament book. This was tested in Guimard–Pilnik, Goteborg, 1955, and Bergraser–Ragozin, World CC Championship Final, 1956. The latter game went 10...♗b8 11.e5 ♘g4 12.e6! (12.exd6 exd6 13.♗g5 favoured White in Euwe–Toran, Leeuwarden, 1958.) (Bergraser probably feared that Nyman had some improvement. One idea is to answer 10. e4 with 10...e5)

10...♗d7 11.a4 ♘g4

This improves on Forintos–Tapaszto, Budapest, 1954, which continued 11...♗b8 12.♗b1 ♖c7.

12.e4 ♖b6 13.♖c2 f5! 14.♗b1 ♖b4

Perhaps this was an attempt to find out if White was playing for a win. He could try 14...f4 at once, but under less favourable circumstances than in the game.

15.♘a2 ♖b6 16.b3?!

White probably has no better than repeating moves with 16.♘c3 answering 16...f4 with 17.♘e2. The text leaves ♘a2 temporarily offside, but of course Black always has the liability at a5.

16...f4! 17.gxf4?!

A sounder continuation appears to be 17.♘c3 f4g3 (17...♘e5 18.f3) 18.hxg3 ♗f7 19.♘d1 ♗af8 20.f3 keeping the pawn structure intact. The text isolates the h–pawn and creates Kingside targets for Black.

17...♗xf4 18.♘f3 ♗ff8



19.♗b2?

This exchange leaves White's dark squares very weak. Better was 19.h3 ♘f6 (19...♘e5 20.♘xe5 ♗xe5 21.f4 ♗d4+ 22.♔h2 leaves White somewhat better.) 20.b4! cxb4 21.♗xb4 ♖c7 22.♗e3 b5 and now, after 23.c5?! (or the safer 23.♘d2, White is not worse amidst great complications.)

19...♗xb2 20.♖xb2 ♗f4 21.h3 ♘f6 22.♘d2

Possible was 22.e5!?

22...♗h4 23.♘c3!?

After 23.♖c3 ♘h5 followed by ♘f4 and Black will win a pawn anyway. So White takes the opportunity to bring the wayward Knight back into play.

23...♗f8?!

It was best to take the pawn now, though White gets some counterplay after 23...♗xh3 24.♗xh3 ♗xh3 25.♘e2 (or 25.♔g2 and 26. f4).

24.♘e2 ♘h5

Now 24...♗xh3 25.♗xh3 ♗xh3 26.♘f4–e6 gives White some compensation.

25.♖c3 ♖c7 26.♘f3?

White should play 26.♗be1 and accept a slight disadvantage. Giving up a pawn with the text move must have been based on a miscalculation, though Black's structure does make it difficult to exploit the extra material.

26...♗xe4 27.♘g3 ♘f4!

Black uses tactics to avoid repairing the White Kingside pawns, but to no avail.

28.♔h2 ♘e2 29.♖d3! ♘xg3 30.f4g3 ♗f5 31.♖d2 e5

Liquidating the backward e–pawn but now the d–pawn suffers the same fate. Black's advantage is small, despite the extra pawn.

32.dxe6 ♖xe6 33.♗g5 ♖e5 34.♗d5+ ♗g7 35.♖b2 ♖e7?

The correct move order was 35...♗c6 and if 36.g4 h6! 37.gxf5 hxg5 38.♖xg5 ♖exf5 39.♖xf5 ♖xf5 40.♖g2 ♗b4! retaining the advantage.

36.g4??

A final blunder. White had to play 36.♖xa5 ♖xg5 37.♖bf2 and would retain good chances to hold the game.

36...♗xg4 37.♗f7 ♖e2+ 0-1



Nyman at the time of the Potter Memorial Tournament in the early 1970s.

Here are Sture's remaining games from the IV World Correspondence Chess Championship:

Zagorovsky,V – Nyman,S [C97]

IV World Correspondence Chess Championship, 1962–65

1.e4 e5 2.♗f3 ♗c6 3.♗b5 a6 4.♗a4 ♗f6 5.0-0 ♗e7 6.♖e1 b5 7.♗b3 0-0 8.c3 d6 9.h3 ♗a5 10.♗c2 c5 11.d4 ♖c7 12.♗bd2 ♖e8 13.b4 cxb4 14.cxb4 ♗c4 15.♗xc4 bxc4 16.a4 ♖b8 17.♖b1 ♗d7 18.♖e3 ♖b7 19.d5 ♖b8 20.♗a3 ♖c8 21.♖c3 ♖a7 22.♖e2 ♗h5 23.♖xc4 ♖xc4 24.♖xc4 ♖c7 25.♖b3 ♗f4 26.♗d1 ♖c8 27.b5 axb5 28.axb5 f6 29.b6 ♖b7 30.♗d2 ♖a8 31.♗c4 ♗a4 32.♖f3 ♗xd1 33.♖xd1 ♖a6 34.♗xd6 ♗xd6 35.♗xd6 ♗e2+ 36.♗h2 ♗c3 37.♖g4 h5 38.♖e6+ ♗h7 39.♖f7 ♖a2 40.♗f5 1-0

Nyman,S – Borisenko,G [B68]

IV World Correspondence Chess Championship, 1962–65

1.e4 c5 2.♗f3 ♗c6 3.d4 cxd4 4.♗xd4 ♗f6 5.♗c3 d6 6.♗g5 ♗d7 7.♖d2 a6 8.♗e2 e6 9.0-0-0 ♗e7 10.f4 ♖c7 11.♗f3 0-0-0 12.♖he1 ♗e8 13.♖e3 h6 14.♗h4 ♗g4 15.♖g1 ♗xh4 16.♗xh4 ♗f6 17.g3 ♗b8 18.♗f3 ♗d7 19.♖d2 ♗c8 20.♖ed1 ♖d7 21.a3 ♖hd8 22.♗b1 d5 23.e5 ♗e4 24.♗xe4 dxe4 25.♖xd7 ♖xd7 26.♗d4 ♗xd4 27.♖xd4 ♖b6 28.c3 f5 29.exf6 gxf6 30.♖d1 ♗c7 31.♖a4 ♖xd4 32.♖xd4 ♖xd4 33.cxd4 ♗d6 ½-½

Arlauskas,R – Nyman,S [C16]

IV World Correspondence Chess Championship, 1962–65

1.e4 e6 2.d4 d5 3.♗c3 ♗b4 4.e5 ♖d7 5.♖g4 f5 6.♖g3 b6 7.a3 ♗f8 8.♗f3 ♗a6 9.♗xa6 ♗xa6 10.h4 0-0-0 11.b4 ♗h6 12.b5 ♗b8 13.♗g5 ♗e7 14.♖f4 ♗f7 15.♗xe7 ♖xe7 16.a4 ♖dg8 17.♖d2 g5 18.g3 gxh4 19.♖xh4 h6 20.♗e2 ♖g4 21.a5 ♖hg8 22.axb6 cxb6 23.♖hh1 ♖d8 24.♖a4 ♖d7 25.♖ha1 ♖g7 26.♖1a3 ♗g5 27.♗h4 ♖f7 28.♗d1 ♖c7 29.♗c1 ♖h7 ½-½

Nyman,S – Dubinin,P [B41]

IV World Correspondence Chess Championship, 1962–65

1.e4 c5 2.♗f3 e6 3.d4 cxd4 4.♗xd4 a6 5.c4 ♗f6 6.♗c3 ♗b4 7.♗d2 ♖c7 8.♗d3 ♗c6 9.♗c2 ♗d6 10.h3 ♗e5 11.♖e2 b6 12.♖d1 ♗b7 13.♗e3 ♖c8 14.0-0 ♗xd3 15.♖xd3 ♗h2+ 16.♗h1 ♗e5 17.♗a3 ♗xc3 18.♖xc3 0-0 19.e5 ♗e4 20.♖d4 ♖c6 21.♖g1 f6 22.♖xd7 fxe5 23.♖xc6 ♖xc6 24.♖g1 ♗d6 25.b3 b5 26.♖c1 ♗f5 27.♖f1 ♗xe3 28.fxe3 b4 29.♗c2 ♖b6 30.♗g1 a5 31.♖d7 ♖f7 32.♖d8+ ♖f8 33.♖cd1 ♗e4 34.♗e1 ♖a6 35.♖xf8+ ♗xf8 36.♗f3 ♗xf3 37.gxf3 ♗e7 38.a4 bxa3 39.♖a1 ♖d6 40.♖xa3 ♖d3 41.♗f2 a4 42.♖xa4 ♖xb3 43.♖a7+ ♗f6 44.e4 ♖c3 45.♖c7 h5 46.c5 ♗g5 47.♗g3 h4+ 48.♗f2 g6 49.♖c8 ♗f4 50.♖f8+ ♗g5 51.♖c8 ½-½

Coolen,J – Nyman,S [B60]

IV World Correspondence Chess Championship, 1962–65

1.e4 c5 2.♗f3 ♗c6 3.d4 cxd4 4.♗xd4 ♗f6 5.♗c3 d6 6.♗g5 a6 7.♗xf6 gxf6 8.♗f5 ♗xf5 9.exf5 ♖a5 10.♗d3 ♖e5+ 11.♗e4 e6 12.0-0 d5 13.♗d3 0-0-0 14.♖h5 ♖c7 15.fxe6 fxe6 16.♖h3 ♖f7 17.♖fe1 ♗e5 18.a3 ♗c5 19.♖ad1 h5 20.b4 ♗a7 21.♗a4 ♖d7 22.♗c5 ♗xc5 23.bxc5 ♗xd3 24.c6 ♖xc6 25.♖xe6 ♖d7 26.cxd3 ♗b8 27.♖b1 ♖c8 28.♖g3+ ♗a8 29.♖eb6 ♖c6 30.h4 ♖xb6 31.♖xb6 ♖e7 ½-½

Nyman,S – Tolush,A [B97]

IV World Correspondence Chess Championship, 1962–65

1.e4 c5 2.♗f3 d6 3.d4 cxd4 4.♗xd4 ♗f6 5.♗c3 a6 6.♗g5 e6 7.f4 ♖b6 8.♗b3 ♗e7 9.♖f3 ♗bd7 10.0-0-0 ♖c7 11.♗e2 b5 12.a3 ♗b7 13.♖e3 ♖c8 14.♗d4 0-0 15.♖d2 ♖fe8 16.g4 ♖c5 17.h4 e5 18.fxe5 dxe5 19.♗f5 ♖xe3 20.♗xe3 ♖xc3 21.♗xe7+ ♖xe7 22.bxc3 ♗xe4 23.♖d3 ♗g3 24.♖e1 f6 25.♗d1 ♗f7 26.♗g1 ♗e4 27.♗f3 ♗ec5 28.♗d5+ ½-½

Nyman,S – Lundqvist,A [C16]

IV World Correspondence Chess Championship, 1962–65

1.e4 e6 2.d4 d5 3.♗c3 ♗b4 4.e5 ♖d7 5.♖g4 f5 6.♖g3 b6 7.a3 ♗f8 8.h4 ♗b7 9.♗f3 ♗c6 10.♗d3 ♗h6 11.♗d2 0-0-0 12.♗e2 ♗e7 13.♗g5 ♖df8 14.♗b5 ♗f7 15.♗f4 ♗fd8 16.♖d3 ♗b8 17.♗f3 ♖c8 18.b4 ♗f7 19.♖c3 ♗cd8 20.♗e2 c5 21.♖b2 cxd4 22.♗d3 ♗c6 23.a4 ♖c7 24.g3 ♗c8 25.♗xd4 ♗xd4 26.♖xd4 ♖c4 27.♗e3 ♗d8 28.a5 ♗c7 29.c3 ♗b8 30.♗d2 ♖c8 31.♖hb1 ♗a6 32.b5 ♗b7 33.f4 ♖xd4 34.♗xd4 bxa5 35.♗c5 ♗b6 36.♗xe6 g6 37.♗g1 ♗d8 38.♗d4 h5 39.♗b3 ♗e6 40.♗xa5 ♗c5 41.♗c6+ ♗xc6 42.♗xc5 ♗xc5 43.bxc6+

♖b6 44. ♖b5 ♗c7 45. ♗e2 ♖b8 46. ♖a4 ♖hd8 47. ♖b3
 ♗c5 48. ♖b5 ♖f8 49. ♖a2 ♖g1 50. ♖bb2 ♗c5 51. ♖a4
 ♖fd8 52. ♗d3 a5 53. ♖b5 ♖a8 54. ♖a4 ♖ab8 55. ♖b5
 ♖xb5 56. ♖xb5 ♖b6 57. ♖e2 ♗c5 58. ♖d2 ♖b8 59. ♖a4
 ♖g1 60. ♗c2 ♖d8 61. e6 ♗c5 62. ♖e2 ♖e7 63. ♖e5 ♗d6
 64. ♗d3 ♖f6 65. e7 ♖xe7 66. c7 ♖c8 67. ♖b3 a4
 68. ♖xd5+ ♗xc7 69. ♖xa4 ♖d6 70. ♖a5 ♗b6 71. ♖b5+
 ♗c7 72. ♖b3 ♗c6 73. ♖a4 ♗c7 74. ♖d5 ♖a8 75. ♖b5
 ♖a1 76. ♗e2 ♖a2+ 77. ♗f3 ♖c2 78. ♖e8 ♖xc3+ 79. ♗g2
 ♖xf4 80. ♖xf4 ♖c4 81. ♖d7+ ♗c8 82. ♖g7 ♖xf4 83. ♗g3
 ♖g4+ 84. ♗h3 ♗d8 85. ♖c6 f4 86. ♖d7+ ♗e8 87. ♖d4+
 ♗e7 88. ♖d7 ♖g3+ 89. ♗h2 g5 90. ♖xg5 ♖xg5 91. ♖h3
 ♗f6 92. ♖xf4+ ♗e5 93. ♖f7 ♗e4 94. ♖d7 ♗d5 95. ♗h3
 ♗e4 96. ♗h4 ♖a5 97. ♖e8 ♖f5 98. ♖a7 ♗f4 99. ♖xh5
 ♖f8 100. ♖a4+ ♗f5 101. ♗g3 ♗e5 102. ♖f3 ♖g8+
 103. ♗f2 ♖b8 104. ♖e4 ♖b3 105. ♗e2 ♖c3 106. ♖d3
 ♖c5 107. ♗e3 ♗d5 108. ♖h4 ♗d6 109. ♖c4 ♗e5
 110. ♖e4+ ♗f5 111. ♖e6+ ♗g5 112. ♖g4+ ♗f6
 113. ♗d4 ♖g5 114. ♖e4 ♖a5 115. ♖c4 ♗f5 116. ♖e7
 ♗f4 117. ♖e8 ♖a4 118. ♖f8+ ♗g4 119. ♗d3 ♗g5
 120. ♖d5 ♖f4 121. ♖e8 ♖a4 122. ♗e3 ♗f5 123. ♖c6 ♖a1
 124. ♖e4+ ♗f6 125. ♖b8 ♗e5 126. ♖b5+ ♗e6 127. ♗f4
 ♖f1+ 128. ♖f3 ♗d6 129. ♖d5+ ♗e6 130. ♖c5 ♗d7
 131. ♖c3 ♗d6 132. ♗f5 ♖f2 133. ♖d3+ ♗c5 134. ♗e5
 ♗c4 135. ♖e3 ♖d2 136. ♖g4 ♖d5+ 137. ♗e6 ♗d4
 138. ♖e1 ♖a5 139. ♖d1+ ♗e3 140. ♗f6 ♗e4 141. ♖b1
 ♖a6+ 142. ♖e6 ♖a5 143. ♖b4+ ♗d3 144. ♖d7 ♗c3
 145. ♖b8 ♗d4 146. ♖h8 ♗e4 147. ♖c6+ ♗d4 148. ♗e6
 ♖e5+ 149. ♗d6 ♖f5 ½-½

Ahmad, I – Nyman, S [E63]

IV World Correspondence Chess Championship, 1962–65

1. d4 ♖f6 2. c4 g6 3. g3 ♖g7 4. ♖g2 0-0 5. ♗c3 d6 6. ♗f3
 ♗c6 7. 0-0 a6 8. h3 ♖b8 9. ♖e3 ♗e8 10. ♖d2 ♖d7
 11. ♖ad1 ♖c8 12. ♗h2 f5 13. c5 ♗f6 14. d5 ♗d8 15. b4
 ♗f7 16. ♖b1 c6 17. ♖fc1 ♖d8 18. ♖f4 cxd5 19. ♗xd5
 ♗e4 20. ♖c2 ♖c6 21. ♖b3 e5 22. ♖e3 dxc5 23. ♖d1
 ♖e8 24. ♗c7 ♖c8 25. ♗e6 ♖a4 26. ♖xa4 ♖xe6
 27. ♖xc5 ♖fc8 28. ♖bc1 ♖h6 29. ♖e3 ♖xe3 30. fxe3 b5
 31. ♖a3 ♗f6 32. e4 ♗xe4 33. ♗e1 ♖c4 34. ♗d3 ♖c6
 35. ♗c5 ♗d6 36. ♖b3 ♗h8 37. ♖b2 ♖e8 38. ♖d3 ♗b7
 39. ♗xe4 fxe4 40. ♖dd1 ♗d6 41. ♖d2 ♖xc1 42. ♖xc1
 ♗c4 43. ♖g5 ♖d6 44. ♖h6 ♗g8 45. ♖f1 ♖f8 46. ♖xf8+
 ♖xf8 47. ♖xe4 ♗d6 48. ♖xf8+ ♗xf8 49. ♖d5 e4 50. g4
 g5 51. ♗g3 ♗e7 52. e3 ♗f6 53. ♗f2 ♗e5 54. ♖c6 ♗c4
 55. ♗e2 h6 56. ♖b7 a5 57. ♖c6 axb4 58. ♖xb5 ♗d5
 59. ♖a4 ♗e5 60. ♖b3+ ♗c5 61. ♖c2 ♗d5 ½-½

Salm, M – Nyman, S [C43]

IV World Correspondence Chess Championship, 1962–65

1. e4 e5 2. ♗f3 ♗f6 3. d4 exd4 4. e5 ♗e4 5. ♖xd4 d5
 6. exd6 ♗xd6 7. ♖d3 ♗c6 8. ♖f4 g6 9. 0-0 ♖g7 10. ♗c3
 ♖e6 11. ♖e3 ♖f6 12. ♖g3 ♗e5 13. ♖b5+ ♗f8 14. ♗d4
 ♗f5 15. ♗xe6+ ♖xe6 16. ♖h3 h6 17. ♖fe1 g5 18. ♖c5+
 ♗g8 19. ♖d3 ♗d4 20. ♖h5 ♖d8 21. ♖ad1 b6 22. ♖xd4
 ♖xd4 23. b3 ♖c6 24. ♗e4 ♗xd3 25. cxd3 ♖d5 26. ♖e3
 ♗h7 27. g4 ♖f8 ½-½

(To be continued)

ICCF Email Team Tournament Final

No	Board 1 : Tom Craig	1	2	3	4	5	6	7	8	9	Pts
1	Felber, R Austria-2 2369	◆		0	1	½	0		½	½	
2	Esses, M CAPA2/ARG 2350		◆	½		1		½	1	½	
3	Leko, P Szeged/HUN 2694	1	½	◆	½	½		0		½	
4	Alvarez Villar, H CITEFA/ARG 2321	0	½	◆	½	½	½	½	0		
5	de Groot, A NBC-1/NLD 2454	½	0	½	½	◆	1	0	1	½	4
6	Craig, TJ Scotland-A 2425	1			½	0	◆		½	½	
7	Pankratov, V Russia-1 2500		½	1	½	1		◆	1		
8	Wang, Mong Lin Singapore 2511	½	0		½	0	½	0	◆	½	
9	Brueckner, J Rochade/GER 2442	½	½	½	1	½	½		½	◆	

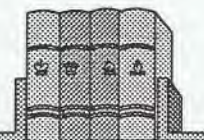
No	Board 3 : Doug Finnie	1	2	3	4	5	6	7	8	9	Pts
1	Schmidt, W Austria-2 2308	◆	½	½	1	0	0	0	0	½	2½
2	Frank, M CAPA2/ARG 2315	½	◆	½	½	0	0	0	½	0	2
3	Berecz, A Szeged/HUN 2405	½	½	◆		½	½		½	½	
4	Fernandez, JH CITEFA/ARG 2317	0	½		◆	½	0	0			
5	van Wieringen, C NBC-1/NLD 2411	1	1	½	½	◆	½		½	½	
6	Finnie, DS Scotland-A 2377	1	1	½	½	½	◆	½	½	1	5½
7	Romanov, S Russia-1 2529	1	1		1		½	◆	½	½	
8	Tay, J Singapore 2200	1	½	½	1	½	½	½	◆	½	5
9	Wrba, K Rochade/GER 2423	½	1	½		½	0	½	½	◆	

No	Board 2 : Philip Giulian	1	2	3	4	5	6	7	8	9	Pts
1	Patocka, F Austria-2 2371	◆	0	½	½	1	0	½	1	½	4
2	Taboada, P CAPA2/ARG 2441	1	◆	½		1				0	
3	Gyimesi, Z Szeged/HUN 2529	½	½	◆		1	0	½	½	0	
4	Gimenez, DM CITEFA/ARG 2385	½			◆	1	1	0	½	½	
5	Eveleens, W NBC-1/NLD 2411	0	0	0	0	◆	0	0	0	0	0
6	Giulian, PM Scotland-A 2394	1		1	0	1	◆		1	½	
7	Pankratov, A Russia-1 2551	½		½	1	1		◆			
8	Kivisto, M Singapore 2296	0	½	½	1	0			◆		
9	Moessle, H Rochade/GER 2417	½	1	1	½	1	½			◆	

No	Board 4 : George Pyrich	1	2	3	4	5	6	7	8	9	Pts
1	Haika, G Austria-2 2200	◆	½	1	1	½	1	0	1	0	5
2	Domancich, E CAPA2/ARG 2290	½	◆	½	½	0	½	0	1	½	3½
3	Blazsik, Z Szeged/HUN 2245	0	½	◆	½	½		0	1		
4	Lamas, DG CITEFA/ARG 2200	0	½	½	◆	½	½		1	½	
5	Pommerel, W NBC-1/NLD 2394	½	1	½	½	◆	½	½	1	½	5
6	Pyrich, GD Scotland-A 2377	0	½		½	½	◆	0	1	½	
7	Dolgov, IM Russia-1 2276	1	1	1		½	1	◆	1	1	
8	Livelo, JD Singapore 2200	0	0	0	0	0	0	0	◆	0	0
9	Schreiner, R Rochade/GER 2200	1	½		½	½	½	0	1	◆	

NEW BOOKS

reviewed by Alan Borwell



Gambit Publications Limited

101 Attacking Ideas in Chess
by Joe Gallagher
128 pages, £12.99

Each of the 101 starting positions features a specific concept or style of a particular GM. These are very well presented with 3 diagrams per page which enable a reasonably strong player to follow the analysis without setting up a board.

Lots of good attacking ideas could be derived from studying this book.

The Botvinnik Semi-Slav
by Steffen Pedersen
224 pages, £14.99

Although this method of responding to the Queen's Gambit became rather out of fashion for some years, it has been rehabilitated by today's top grandmasters.

The variations produced from the Botvinnik Semi-Slav system (5 Bg5 dxc4) lead to complex and imbalanced positions - ideal for CC play. The Moscow Variation (5 ... h6) is also covered in Part Two.

This is a substantial and comprehensive work by a young IM author from Denmark who has already written several highly regarded specialist openings books.

Storming the Barricades
by Larry Christiansen
176 pages, £13.99

This author endeavours to demonstrate how to "conjure up" dangerous attacking changes from almost any position! Using 50 real-life positions, he analyses their key features and explains the best strategy for achieving a successful attack. The themes are instructive and well presented in an interesting and thought-provoking book.

Play the Open Games as Black
by John Emms
224 pages, £15.99

This attempts to answer the question, "What to do when White avoids the Ruy Lopez!"

Openings covered include the Vienna Game, King's Gambit, Scotch, Four Knights and Two Knights Defence.

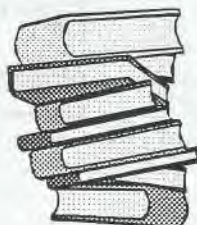
For a player who enjoys defending against the Ruy Lopez (by responding to 1 e4 with 1 e5 2 Nf3 Nc6) it can be rather alarming to be faced with a different kind of strategy by White from move 3. This book provides good advice and plenty of ideas for dealing with the plethora of options which are at White's disposal.

The Meran System
by Steffen Pedersen
224 pages, £14.99

Continuing his study of the Semi-Slav variants, this excellent author provides an in-depth study of the Meran (and Anti-Meran) systems. The capture by Black of dxc4 (as in the Botvinnik Semi-Slav) is either delayed or not made at all.

There are 22 chapters, each featuring a particular main line or different concept. There is extensive coverage of the Reynolds Variation, where White thrusts in the centre with 10 d5.

An excellent book and recommended, along with the one revised earlier, to provide a comprehensive coverage of these double-edged openings.



EVERYMAN CHESS

**Easy Guide to the
Sveshnikov Sicilian**
by Jacob Aagaard
144 pages, £13.99

Yet another book on this very popular but now heavily analysed dynamic variation of the Sicilian Defence.

These "Easy Guide" books do not attempt to provide in-depth coverage of openings and must be treated with some caution by CC players. The analysis requires to be augmented with an up-to-date games database.

Secrets of Pawn Endings
by Müller and Lamprecht
288 pages, £17.99

This is a very comprehensive and authoritative tome covering all types of King and pawn endings.

Although the presentation of the book is rather confusing, the German authors, with help from John Nunn and translator Marc Becker, have crammed many exercises and solutions into 288 pages.

Not the kind of reference book which would be easily usable for CC players, but would be useful to those wishing to improve their endgame techniques.

Open Ruy Lopez
by Glenn Flear
160 pages, £14.99

This again is similar in format to the "Easy Guide" series, using 88 expert games assembled in 12 chapters to demonstrate different variations of the Open variation. Perhaps this opening has been too heavily analysed to produce "unclear" positions for CC, but for Black, it is a reliable choice.

EVERYMAN CHESS

Queen's Gambit Declined
by Matthew Sadler
176 pages, £14.99

Like the previous book, this completes a trilogy of QGD books by GM Sadler (previous ones being The Slav and The Semi-Slav). It features 111 illustrative games in eleven separate chapters, but it would appear that the English GM does not have any top CC games in his databases!

Although the QGD retains its popularity for OTB players, it often tends to lead to rather sterile positions, with accurate play.

In my younger days, I was an enthusiastic QG player, but have never really liked it for CC games, due to so many of the variations being too "balanced". However, it is a matter of personal choice!

Winning Unorthodox Openings
by Angus Dunnington
144 pages, £13.99

This book is more to my liking as it covers less analysed and more fluid openings, ideal for creative CC players.

It begins with the Sokolsky 1b4, the Nimzowitsch-Larsen 1 b3, the Queen's Knight Opening 1 Nc3. By comparison, Birds Opening 1 f4 and King's Fianchetto 1 g3 then seem rather conservative!

There should be some good ideas here for those CC players with the nerve to use such unorthodox openings!

Kramnik : My Life and Games
by Kramnik & Damsky
272 pages, £17.99

Contains 178 of the best games played by Vladimir Kramnik, one of the most colourful and gifted GMs of the 1990s.

This book is a combination of a story about the first 30 years of his life and of his chess development.

Kramnik has an interesting style and choice of openings - there are many Queen's Gambits, English Openings, King's Indians and Sicilians.



THINKERS' PRESS Inc

New Ideas in the Richter-Veresov
Queen's Pawn Opening
by Gufeld and Stetsko
192 pages, \$22.95

Contains 550 game citations including 31 by IMs Richter and Veresov themselves! This is a very comprehensive coverage and has seven of its 25 chapters where Black avoids playing 2 ... d5 in response to White's Nc3.

In his publisher's notes at the end of the book, Bob Long gives some convincing arguments in favour of using this opening, rather than the more traditional 2 c4 standard.

The combination of GM Gufeld and his research assistant IM Oleg Stetsko has produced many good books and this is no exception. This opening is certainly worth exploration by CC players.



Chess Mail



Subscribe now to this outstanding
international magazine for
correspondence chess and email players

Edited by Tim Harding, this high quality monthly magazine contains up-to-date news of international CC tournaments, news, games and an excellent range of interesting articles from worldwide contributors.

Obtainable from Chess Mail Ltd., 26 Coolamber Park, Dublin 16, Ireland, Email editor@chessmail.com or from Chess & Bridge Suppliers (Scotland).

Excellent value! £28 for eight issues in 2000

ChessBase 7 (Part 5) : A review by Bernard Milligan

For a slight change this time I thought I would take a look at some of the other CDs which ChessBase now produce. All can be accessed from ChessBase 7 but also work perfectly well without it, as all the software needed to run them comes with each CD.

In the Games Column, I mentioned my liking for the King's Gambit so Alexander Bagiev's CD looked particularly interesting to me. His opening comments: *"Actually the Kings Gambit is not suitable for top class chess. With optimal play White is the side likely to get problems"* confirmed my belief that perhaps this opening was a bit dubious in modern chess. I am still likely to play it from time to time and, as the author says, a success depends on each individual player's chess understanding. You might not be able to beat a top Grandmaster with it, but if you are like me you wouldn't beat them anyway and in any case are unlikely ever to be playing against one.

This CD should go a long way to improving my understanding of how to play this fighting opening. It contains over 16,000 games ranging from old masters such as Morphy, Anderssen, Jukertort, Alekhine and Reti, to modern masters such as Spassky, Fischer, Polgar Sisters, Short, Gallagher, Nunn and Bronstein. All the games are easily accessed and they are already sorted into the 29 major variations, so you can find exactly what you want at the click of a mouse.

The next CD to catch my eye was "Intensive Course Tactics" by George Renko. It contains well over 4,000 tactical positions and is well organised into categories such as checkmate, passed pawn, zugzwang, simultaneous attack, pins, skewers, invasion, various drawing methods and a lot more. Clicking on any of the 32 categories takes you straight to positions relating to that theme. Basically you generally get a position on the screen where you have to decide on the best move for the player to make. It does help that you know roughly what you are looking for

from the theme selected. The positions are timed but if you get it wrong you are allowed to try again and can accumulate points to see how well you have been doing. I had hours of fun with this CD but that was no surprise as I always used to like chess puzzle books. No doubt it should also help to sharpen the ability to spot tactical opportunities in your own games.

The "King's Indian Structure with f5-f4" CD discusses winning ideas for White and Black in positions with a closed pawn structure, as in the main line of King's Indian. Basically this CD looks at positions where Black has pawns on f4, e5 and d6 and White has pawns on f3, e4 and d5. Don't let the title fool you as this position can arise from other openings such as the Old Indian, Pirc, Modern, Ruy Lopez, Sicilian and Dutch, and this CD covers them all. It has an elaborate text introduction with links to the most important key games, typical variations and a huge lexicon-like theme key. With all the tactical and strategical middlegame motifs you can learn how to play this structure perfectly. The biggest problem for beginners is formulating good plans to get the best advantage from their games. This CD explains in great detail exactly what plans are typical from the various openings and therefore is ideal for both beginners and specialists alike. The text content is certainly as good as any book that I have read and once again you have instant accessibility to the relevant games and can easily play through them without needing to constantly reset positions on boards.

In "Modern Ways of Playing the Sicilian" the Cuban Grandmaster Amador Rodriguez introduces six modern, partially rediscovered systems with which Black without extensive theoretical knowledge can cause his opponent some very unpleasant problems. In a number of introductory texts, the special points are explained in clear language, suitable for amateurs and experts. The position tree allows you to keep all variations in view, with full statistical information on

every move. Training positions are also included so you can practise what you have learned.

Lovers of the Informator book series will be pleased to know that ChessBase produce this series on CD format. Issues 1 to 70 can be bought on a single CD and the subsequent books come on individual CDs. Each single issue includes all annotations, variations, tactical positions and endgames.

It is very easy to download thousands of free chess games from the Internet but generally these are just straight game moves with no annotations. For those of you looking for top class games, you can't go wrong with the monthly ChessBase magazine on CD. There can easily be a couple of thousand games per issue and each is superbly annotated.

Those of you with ChessBase will be interested in the last two items. The ChessBase Opening Encyclopaedia has contributions from many well-known opening experts. It contains at least one survey for each of the 500 opening fields according to ECO standard, so that the database is ideal for setting up a complete opening repertoire, featuring more than 470,000 games, 40,000 of them with annotations, 3,000 opening surveys, access to the games with the big opening key "BigKey", big tree of all games for quick overview and statistical access.

The Fritz Endgame Turbo contains four database CDs with Nalimov tablebases. With the help of the Endgame Turbo, endgames with five or less pieces will be played dramatically better, since the programs can use the Endgame Turbo in their search. System requirements: the Endgame Turbo works together with Fritz6, Nimzo7.32, Junior6, Hiarc7.32 and as analysis engine in ChessBase 7.0. I found it quite fun to set up a position in ChessBase and see if I could work out how to play the endgame. When I got stuck I could simply switch on the Endgame CD and I could then see how to play the position perfectly.

The Corresponding Difference

[by Tom Craig]

"You spend an awful long time finding out nothing in particular"

The evening before my eldest nephew's graduation ceremony in 1996 was a very special occasion. My Oxfordshire home was full of joy and noisy celebration. I had asked James if the Internet had assisted him with his studies. The answer he gave above still applies. The World Wide Web is now perceived as a mail order business. It takes an unfeasible amount of time and considerable effort to order a couple of bags of crisps from Tesco on-line.

However, my nephew was able to convince me that I should abandon playing my CC games by post. BEM (Before Email!) games with South America and Eastern Europe could be very tedious. Often games would proceed at less than a move a month. Sadly, there is no equivalent of the OTB quick play finish. The removal of the unfair process of adjudication boosted the excitement and enjoyment of team chess. It also raised the standard of endgame play.

Chess database programs, and the ability to download games databases from the Internet, has changed CC/Email chess in recent years. Opponents often offer suggested continuations that are based on an opening variation that I naively tried out as an experiment in 1985.

There are three good reasons for offering the following game for your entertainment. Firstly, it is hot off the press and you will not find it on any database, unless of course you have downloaded this from the Internet! Secondly, it could well be the game that gives me my IM title (after many years of missing out by ½ a point). Thirdly, it starts life as a conventional postal game and finds a new zest when later moves travel along the Information Super Highway.

P Briao (BRS) v T Craig (SCO)

Sicilian Defence, Alapin Var. B22

Luis Paucar Perez Memorial 1997/00

1 e4

In April 1997, Paulo was 44 years old, married and had three children, (16,15,11). His brief welcome message also revealed that he is a "manager by profession, work in a bank branch in the cashier...."

1 c5
2 ♖f3 ♗c6

My opponent had offered the following suggested continuation "if 2 ... e6 3 d4 cxd4 4 ♗xd4 ♗c6 5 ♗b5 d6 6 c4 ♗f6 7 ♗1c3 a6 8 ♗d4 ♗xd4 9 ♗xd4 ♗e7 10 ♗e2 0-0 11 0-0"

3 c3 ♗f6

"If 3 ... d5 4 exd5 ♗xd5 5 d4"

4 e5 ♗d5
5 d4 cxd4
6 ♗c4 ♗b6
7 ♗b3 d5

Every other move seemed to prompt my opponent into trying to dictate my defensive preferences. "If 7 ... d6 8 exd6 ♗xd6 9 0-0 ♗e6 10 ♗xe6 ♗xe6 11 ♗xd4 ♗xd4 12 ♗xd4 ♗d8 13 ♗h4"

8 cxd4

Now Paulo abandons his previous offering by avoiding 8 exd6. After 8 exd6 ♗xd6 I am quite happy to play either side. In fact, my game with White against J Nurminem in the same event continued:

9 0-0 ♗e6 10 ♗a3 dxc3 11 ♗e2 ♗xb3 12 ♗b5 (12 axb3 0-0-0!?) 12 ... ♗b8 13 axb3 e5 14 bxc3 (14 ♗fd4!?) 14 ... ♗e7 15 ♗g5 ♗xg5 16 ♗xg5 h6 (16 ... a6) 17 ♗e4 0-0 18 ♗fd1 ♗d8 19 ♗bd6 ♗c7 20 ♗h5 ♗e7 21 ♗d3 ♗e6 22 ♗ad1 ♗ab8 23 ♗g3 ♗c8 24 ♗c5 ♗f6 25 ♗dxb7 ♗xd1+ 26 ♗xd1 ♗e7 27 ♗g4 g6 28 ♗d3 ♗b6 29 ♗d6 ♗d8 30 ♗d1 f5 31 f3 ♗h7 32 b4!? Agreed drawn, ½-½.

Against a weak OTB opponent, I might be tempted to try 8 0-0?!

8 ♗g4
9 ♗e3 e6

I now have a type of French Defence without the problem Bishop stuck on c8.

10 0-0 ♗e7
11 ♗c3 0-0
12 h3

[12.a3!?!]

12 ♗h5
13 ♗e1 ♗c8

In my early OTB days, I would have been mesmerised with thoughts of f6.

14 ♗c1 ♗a5
15 ♗c2 ♗ac4
16 ♗d3 ♗g6
17 ♗e2 ♗xe3
18 ♗xe3 ♗c4
19 ♗e2 ♗xc2
20 dxc2 ♗c6!?

Intending ♗c7, ♗c8; 20 ... ♗a5.

21 b3 ♗a3
22 ♗d3 ♗c7

22 ... ♗b4!?! 23 ♗ed1 ♗c7.

23 ♗e2

23 ♖ed1 ♜c8 24 ♜e2 ♜c2?

23 ♜c2
24 ♖f1

24 ♖ed1 ♜a3 25 ♖b1 ♜b4!

24 ♜a3?

[24 ... ♜c8]

25 ♜g5!?

25 ♖cd1 ♜b4 26 ♗e3 ♜c8!?

25 g6
26 ♖cd1

At this point, after a long drawn out two years of play, we switched from snail-mail to email. Among the many symbols missing from the Informator coding system is one to represent "change in method of playing moves". This deserves a diagram as this never happens OTB!



26 ♜b4
27 ♗g3 h6!

Black has to be careful. It is tempting to grab the pawn advantage as quickly as possible and to go wild with the speed and ease of exchanging moves electronically. The modem was unplugged, and I sat down and carefully evaluated White's King-side threats. 27 ... ♜xa2 28 ♗h4 h5 29 g4 (29 ♜f4 ♜c8!?).

28 ♜f3

28 ♜f4? hxg5 29 ♗xg5 ♜xa2 30 ♜h5 ♜e7 31 ♜f6+ ♜xf6 32 exf6 ♗d8-+.

28 ♜xa2!?

Pushed for time in an OTB game, I would have played 28 ... ♜h7.

29 ♖a1

29 ♜f4 ♜c3 30 ♖d3 ♖c8 31 ♗h4 ♜f8-+

29 ♖c2

My notes show that I had originally intended to play 29 ... ♜c1!? 30 ♜f4 (30 ♜xc1 ♜xc1 31 ♖xa7 ♗b6 32 ♖a1 ♖fc8) 30 ... ♜b2 (30 ... ♖a6 31 ♗h4) 31 ♖xa7 ♗b6

30 ♜f4 ♜h7
31 ♜e1 ♖d2
32 ♗e3!?

32 ♜f3 ♖b2 33 ♜d3 ♜c3 34 ♖fe1 ♜e4-+

32 ♜b4

32 ... ♗a5 33 ♜f3 ♖c2

33 ♜ed3 ♜c3
34 ♜e2

34 ♜c5 ♖c8 35 ♖xa2 ♖xa2 36 ♗xc3 b6-+

34 b6?!?

I spent eight days considering this move (designed to prevent ♜c5), which left me with only three days for my next six moves. My move is a bit of a cop out. 34 ... ♖c8!?

35 ♖fc1

35 ♜dc1 ♖xe2 36 ♜xe2 ♜xa1 37 ♖xa1 ♗c2?

35 ♜xc1
36 ♖xc1 ♖xe2
37 ♗xe2 b5
38 ♗f3 ♜g8

To protect f7 and release my rook. 38 ... ♖c8? 39 ♖xc3; 38 ... a5 39 ♜f4 ♖c8 40 ♜xe6 fxe6 41 ♖xc3 ♗xc3 42 ♗f7+=. Paulo had performed below his 2425 grade in his other games, but I now realised that he was going to make me work for my IM norm.

39 ♜f4

I had thought that the critical line was 39 ♜b4. Here are a couple of fun lines from my notes 39 ... ♖c8 40 ♜a2 b4 41 ♜xb4 ♗a5 42 ♜xd5 exd5 43 e6 fxe6 (43 ... f5 44 e7 ♜f7 45 ♗e3 f4 46 e8=♗+ ♖xe8 47 ♗xc3 ♗xc3 48 ♖xc3 ♖e1+ 49 ♜h2 ♖d1 50 ♖c7+ ♜f6 51 ♖xa7 ♖xd4 52 ♖a6+ ♜f5 53 ♖d6) 44 ♗f6 ♖c6 45 ♗xg6+ ♜f8 46 ♗xh6+ ♜e8 47 ♗g6+ ♜d7

39 b4

[39...Rc8? 40.Qd3!]

40 ♜e2 ♖c8
41 ♗e3

41 ♜xc3 bxc3 42 ♗e3 ♜g7 43 ♗f3 c2-+.

41 ♗a5
42 ♜h2

42 ♗xh6 ♗a2 43 ♗e3 (43 ♜f4? ♗d2!+) 43 ... ♗xb3.

42 ♗a2

[42...Rc7? 43.Qxh6]

43 ♜xc3 ♖xc3
44 ♖xc3 bxc3
45 ♗xc3 ♗xf2



This is a won Queen and Pawn ending, all I have to do now is win it!

46 ♗c5 a6!?

The last 20 moves of hard resistance had dented my confidence. A pawn is a pawn! 46 ... ♗f4+.

47 ♗c3

7 ♖g5

7 ♖e3 cxd4 (7 ... ♗c6 8 dxc5 ♖a5 is an untried Gallacher suggestion)
 8 ♗xd4 ♗e7 9 0-0 0-0 ♠ NCO 10 ♖f3 (10 ♖e1 ♗g4) 10 ... e5!? is another untried Gallacher suggestion.

7 ♗e7

7 ... cxd4 8 ♗xd4. BDG databases are full of crushing victories (designed to intimidate those that have to face it!) e.g. 8 ♗xf6 ♖xf6 9 ♗e4 ♖d8 10 0-0 ♗e7 11 ♗e5 0-0 12 ♖xf7 ♖xf7 13 ♗xf7 ♗xf7 14 ♖h5+ ♗g8 15 ♗d6 ♖xd6 16 ♖xh7+ ♗f8 17 ♖h8+ ♗f7 18 ♖h5+ ♗f8 19 ♗g6 ♗g5 20 ♖xg5 ♗d7 21 ♖d8#, Theon v Marzolo France 1999) 8 ... ♗b4.

8 dxc5 ♖a5

Not 8 ... ♗bd7? 9 b4!

9 ♖d2!?

9 0-0 ♖xc5+ 10 ♗h1 ♗bd7.

9 ♗bd7!

I did have a brief look at 9 ... ♖xc5?! 10 0-0-0?! ♗bd7.

10 ♗b5 ♖xd2+
 11 ♗xd2 0-0!
 12 b4 ♖d8

Better than 12 ... a6?! but 13 ♗c7 ♖b8 14 ♗f4 ♗h5!? is an entertaining line.

13 ♗f4 ♗d5!
 14 ♗c7

14 ♗c7 was suggested by Robert after the game as a better try but 14 ... ♗xc7 15 ♗xc7 ♖b8 looks OK for Black.

14 ♗xf4

14 ... ♗xc7? 15 ♗xc7 ♖e8 16 c3 a5 17 a3.

15 ♗xa8



I had arrived at this position during my preparation for my sixth move.

15 b6!
 16 c6

16 a3 ♗b7 17 ♗c7 bxc5 18 ♖ab1 ♗xg2 19 ♖hf1 c4!-+; 16 cxb6 ♗xb4+ 17 ♗e3 (17 c3? ♗xb6+) 17 ... ♗d5+ 18 ♗f2 axb6.

16 ♗xb4+

16 ... ♗f6? 17 b5.

17 ♗e3

17 c3 ♗b8 (17 ... ♗f6 18 cxb4 ♖xd3+ 19 ♗c2) 18 cxb4 (18 c7? ♖xd3+) 18 ... ♖xd3+ 19 ♗e1 ♗xc6

17 ♗d5+
 18 ♗f2

18 ♗e2 ♗c5 19 c7 ♖f8!; 18 ♗d4?? ♗c3+ 19 ♗c4 ♗a6+ -+; 18 ♗e4?? ♗c5+ 19 ♗e5 ♗c3+ 20 ♗d4 f6#.

18 ♗c5
 19 ♗c4

19 c7 ♖f8! 20 ♗c4 ♗b7-+; 19 ♖ad1 ♗xd3+ 20 ♖xd3 (20 cxd3 ♗a6+) 20... ♗a6 21 ♗c7 ♗c5+ -+

19 ♗e4+
 20 ♗e2 ♗ec3+

20 ... ♗f4+ is not quite as clear cut as the game move (A) 21 ♗e3 ♗xg2+ 22 ♗e2 (22 ♗xe4?? f5+ 23 ♗e5 ♗c3+ 24 ♗d4 ♗xd4#) 22 ... ♗c5 23 c7 (23 ♗d3 ♗f4+) 23 ... ♗c3+ 24 ♗f1 ♗e3+ 25 ♗e1 ♖f8+; (B) 21 ♗f1 (B1) 21 ... ♖d2? 22 ♗xd2 ♗xd2+ 23 ♗f2 (23 ♗g1? ♗c5#; 23 ♗e1? ♗xc4+) 23 ... ♗xc4 24 ♖hd1 (24 ♖ad1) 24 ... ♗d5 25 ♗c7 ♗c5+ 26 ♗f3+; (B2) 21 ... ♗d2+ 22 ♗xd2 ♖xd2 23 c3 (23 g3? e5 24 h4 ♗h5+) 23 ... ♗xc3 24 ♖c1.

21 ♗f2

21 ♗f1?? ♗e3+ -+; 21 ♗d2?? ♗c7+ -+; 21 ♗e1 b5!?-+.

21 ♗c5+
 22 ♗e1

22 ♗f1?? ♗e3+ -+; 22 ♗g3?? ♗e4+ 23 ♗h4 ♗e7+ -+] 22 ... ♗e3 23 ♗d3 [23 c7? ♗xg2+ 24 ♗f1 ♗e3+ 25 ♗e1 ♖f8+; 23 ♗b3? ♗a6!

23 ♗xg2+
 24 ♗f1

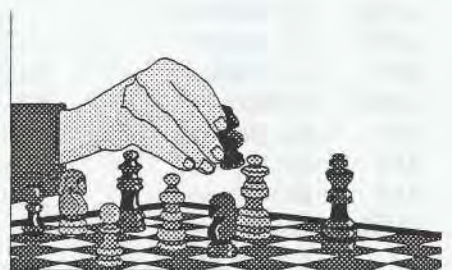
24 ♗d2 ♗e4+ 25 ♗e2 ♗f4+ 26 ♗f1 ♗f2+.

24 ♗f4

24 ... ♗e3+ 25 ♗e1 e5!? was a flight of fancy that I explored in my game notes.

White resigns : 0-1

25 ♗e5 (25 a4 e5-+; 25 ♗e1 ♗xd3+ 26 cxd3 ♖xd3) 25 ... ♗cd5 26 ♗b5 ♗e3+ 27 ♗f2 ♗xc2+.



Grading List 2000

[by Raymond Baxter]

This year there has been a major change in the presentation of the ICCF grading list. Previously 20 results, and a minimum grade of 2000 were required before an ICCF grade was published. When a Scottish player obtained an ICCF grade, this immediately replaced his SCCA grade, which lapsed.

Now an ICCF grade is published after only 12 results, and there is no minimum grade. Consequently we now have 95 players with international grades, compared with 65 last year, and many of the additional players are less active internationally than domestically. It no longer seems appropriate to replace an SCCA grade by an ICCF grade in all cases, irrespective of the number of results.

It has therefore been decided that where a player has a provisional ICCF grade (less than 30 results), his SCCA grade will continue to be calculated, and both grades will be published. In future, when you meet a player with two grades, the one which is based on the greater number of results will be used in the calculation of your SCCA grade. No change is being made to those with established ICCF grades (30 results or more). In these cases the SCCA grade lapses immediately.

As well as international matches and ICCF tournaments, the following Scottish events are used in the ICCF grading: Championship, Candidates, and Division 1 of the League.

The SCCA grades shown in this list take account of all games reported to the Grading Officer by 31/12/99. The new grades will be used for games starting in 2000. All SCCA events listed in the magazine are included, except the Openings tournament. Friendly internationals are also included if the opponent's grade is known. Grades are calculated for players who have had eight or more results, provided these results were against graded players, or against ungraded players for whom it has been possible to estimate a grade.

The following members were active in 1999, but have not yet accumulated the required eight results, and therefore have no grades, NJ Banner, OWF de Sousa, JT Ellison, C Knox, and J Owens.

Three years ago the SCCA grades were increased by up to 200 points to make them more consistent with the ICCF grades. This means that for those who play both correspondence and over-the-board chess, their correspondence grades may well be substantially higher than their over-the-board grades.

A provisional grade (ie one based on less than 30 results) is marked with an asterisk.

If your name is shown incorrectly, or if you are doubtful whether your grade or the number of results is accurate, please let me know.

No	Name	SCCA Results/Grade	ICCF Results/Grade	No	Name	SCCA Results/Grade	ICCF Results/Grade
004	I Aird		44 2331	040	JS Cairney	71 1805	
317	C Almarza-Mato	123 2026		096	AWI Campbell	66 1855	14 1895*
LM18	GM Anderson		55 2154	038	IS Campbell		160 2138
121	J Anderson	76 1965	12 1975*	108	J Cassidy	197 1510	
244	AR Angus	46 2055			MM Chalmers	12 1780*	
049	A Armstrong		49 2120	252	JA Clayton	41 2115	
313	JM Armstrong	51 1720		105	R Cochrane	20 1750*	
016	EA Bailey	70 1995	14 2050*		PJ Coffield	66 2020	
386	M Ballan		30 2050	LM85	S Collins	21 1840*	
015	RWM Baxter		51 2313	331	JI Coltart	24 1690*	
155	R Beacon	339 2055		173	WM Cook	49 2065	14 2128*
LM11	CR Beecham		196 2134	364	DW Coope		103 2056
022	AGE Bird	117 1960		204	J Copley		63 1955
LM20	GH Bird		43 2064	LM27	TJ Craig		207 2430
LM88	C Black	21 1985*		305	AD Crawford	30 1740	
LM09	AP Borwell		357 2326	332	JS Crawley	26 1575*	
LM87	CF Boyle		105 2235	LM19	D Crichton	120 1945	16 1946*
373	JC Boyle	14 1815*		233	RB Crosbie	154 1740	
LM82	S Brady	52 2035	14 2113*	166	DR Cumming		94 2122
215	AC Brown	113 2180	28 2271*	326	JF Cumming	14 1795*	
370	DE Brown	16 2195*		282	E Davis		30 2089
318	MG Brown	26 1405*		358	A Dearnley		68 2321
LM16	DM Bryson		155 2545	345	S Donohoe	18 1935*	
	AB Burnett	14 2080*	14 2134*	316	CM Dowell	117 1845	
	R Burnett	8 1970*		185	R Dowson	42 1885	
				134	MH Dunn	77 1920	
				030	MT Dyer		95 2085

No	Name	SCCA Results/Grade	ICCF Results/Grade	No	Name	SCCA Results/Grade	ICCF Results/Grade
371	D Edney	18 2065*		367	PH Macdonald	9 1965*	14 1944*
183	DRR Ellis	47 2150	14 2176*	148	NR McEwan	30 1770	22 1937*
384	SSJ Fairweather	24 1305*		196	Mrs S MacGilchrist	22 1995*	28 2057*
110	JN Falconer	48 1955	20 2013*	LM84	CA Macgregor	100 1535	26 1876*
284	JA Findlay	46 2200		391	C McIntee	25 1970*	14 2203*
340	DS Finnie		98 2391		I McKechnie	8 1980*	
372	HS Flockhart	19 1935*	21 2057*	397	J McKenna	18 1795*	
219	MP Ford	37 1840		394	PL MacKenzie	13 1955*	
363	TS Franks	10 1685*		172	SG Mackenzie	49 1945	16 1889*
	MJ Gifford	10 1735*		LM32	I Mackintosh		117 2289
086	SR Gillam		107 2379	200	G McKnight	11 1825*	
LM51	PM Giulian		333 2385	351	A MacLeod	10 2320*	
LM86	Mrs RA Giulian		45 1734	081	MJ MacLeod	88 1965	
303	S Giulian	12 1455*		216	AN MacMillen		73 1970
124	B Goodwin	67 1955	15 2169*	001	CA McNab		98 2526
051	K Gordon	141 1845		193	A MacQueen	85 2035	
LM76	BW Grant	63 1790		LM02	DG McRoberts		42 2072
399	J Grant	12 1720*		330	A Madden	14 1605*	
	WM Grant	18 1755*		376	R Malcolmson	58 1825	
245	KJ Guthrie	33 1815	14 1821*	LM38	IA Marks		117 2162
325	G Hamilton	16 1550*		LM66	IH Marshall		115 1914
390	J Hamilton	16 1730*		083	A Maxwell	58 2010	12 1945*
327	CR Hammersley		14 1740*	LM91	MA May	86 2100	
299	MG Harkins		38 2044	355	DG Meldrum	44 1755	
039	W Harper	94 1825	22 2004*	178	B Milligan		58 2381
LM56	Mrs EA Hartford		147 1965	LM90	JR Milne	44 1670	
063	D Harvey	160 1950	22 2003*	LM78	IWS Mitchell		38 2023
248	JB Henderson	30 2005	14 2156*	401	PJ Moir	10 1785*	
014	JM Herries	183 1900	22 2042*	333	RS Montgomery	18 1935*	13 2309*
114	SH Hilton		52 1732	338	J Morrow	25 1840*	
116	A Hind		30 2184	LM71	AJ Muir		40 2628
LM10	AT Hislop		147 2106	380	GAA Murphy	18 1970*	
377	R Holland	18 2020*		LM64	JS Murray	46 2055	12 1900*
115	DA Hughson	43 2175	15 2235*	234	SA Murray	31 2105	
268	W Hynd	28 1750*		202	D Neil	50 2150	27 2450*
LM15	JPE Jack	178 1780		383	S Nicoll	16 1550*	
312	CR James	97 1625		348	JH Nielsen		124 2023
255	IM Jamieson	22 1845*		147	A Nisbet	56 2130	13 2051*
LM14	DM Jenkins		66 2271	225	AC Norris		71 2227
322	M Jessing	26 2035*		315	AR Petrie	114 1690	
	MR Keen	8 2105*	18 2179*	379	GH Phillips		110 2282
LM77	AD Kilgariff	94 1775		229	G Plant	65 1970	
LM48	DA Kilgour		213 2559	378	M Pollock	13 1520*	
257	JW Kilgour	64 1645		258	TW Pollock	24 1695*	
021	R Kilpatrick		53 2225	LM34	VA Proudler	76 1790	
274	DL Kleppang	15 2130*		048	GD Pyrich		431 2390
260	A Knox	58 1575		343	J Rawlinson	12 1670*	
	WE Leithead	8 2020*		136	IF Reeman		57 2204
256	CJ Lennox		47 2405	LM75	DR Reid	36 2075	
LM37	DM Livie		98 2219	254	S Riley	72 1825	
LM03	GWG Livie		73 2243	293	A Roberts		52 2028
264	G Lloyd	229 2145		224	MP Roberts	29 2110*	13 2106*
337	R Loughran	94 1720		362	P Robertson	10 1870*	
LM04	JPL Lumsden	82 1840		319	S Robinson	8 1790*	
261	TF McAinsh	92 1695		357	ACW Robson	28 1645*	
LM41	KB McAlpine		35 2545	084	FR Ross	45 1590	
LM67	JM MacArthur	48 2035			GJS Ross	10 1860*	
400	W McConchie	12 1275*			GC Rosser	8 1850*	
LM81	P McConnell	19 1840*		398	RE Rough	18 1640*	
374	GP McCoy		29 1889*	356	JF Rutherford	24 1640*	
352	GR McDonald		34 1971				

No	Name	SCCA Results/Grade	ICCF Results/Grade	No	Name	SCCA Results/Grade	ICCF Results/Grade
LM89	D Salter	80	2015	336	F Teunisse	37	2040*
LM22	DJ Savage		44	2054	B Thompson		78
311	G Saxton	30	2015	29	2011*		
265	B Setchell	8	1510*	168	AC Thomson	36	1820
094	K Seyfried	68	1985	LM79	T Thomson		257
285	JK Shaw	11	2295*	270	D Trenner	39	1860
300	RJ Simpson	27	1670*	129	RF Turner	131	2190
057	I Sneddon		63	2230	LM31	JM Walker	58
LM65	GR Sprott		108	2350	385	CR Wallace	8
126	AG Stalker	14	1940*	LM80	Joe Watson		96
	FC Stevenson	10	1880*		John Watson	89	1855
360	C Stewart	12	1595*	366	S Whitehead	29	1675*
294	DJ Stewart		105	2364	346	P Wildig	41
LM46	KWC Stewart		59	2239	007	G Wood	
308	SF Sutherland	36	1220	149	A Wright	103	1930
389	Ms G Swan	10	1615*		J Young	8	1820*
	P Tait	14	1610*	065	SM Young	173	2090
	T Tait	22	2060*				
LM30	TAH Taylor	54	1785				
	W Taylor	8	1940*				

ICCF Ratings - Scotland 2000

Top 30 established ratings (30 or more results)

Muir, AJ	GM	2628	Pyrich, GD	IM	2390	Jenkins, DM	2271
Kilgour, DA	GM	2559	Giulian, PM	SIM	2385	Livie, GWG	2243
Bryson, DM	GM	2545	Milligan, B		2381	Stewart, KWC	2239
McAlpine, KB	IM	2545	Gillam, SR	SM	2379	Boyle, CF	2235
McNab, CA	SIM	2526	Stewart, DJ	SM	2364	Sneddon, I	2230
Thomson, T	IM	2434	Sprott, GR	SM	2350	Norris, AC	2227
Craig, TJ	SM	2430	Aird, I		2331	Kilpatrick, R	2225
Lennox, CJ		2405	Borwell, AP	IM	2326	Livie, DM	2219
Watson, J	IM	2398	Baxter, RWM	SM	2313	Reeman, IF	2204
Finnie, DS	SM	2391	Mackintosh, I		2289	Hind, A	2184

Note: SIM = Senior International Master SM = Scottish CC Master (all GMs, SIMs and IMs are also SMs)

100 CLUB

This is a club for members who would like to help with the development of the Scottish Correspondence Chess Association. Currently there are almost 80 units issued but we need to increase this to 100 - please help us!

The subscription is only £1 per month per unit, with two prizes each month currently approx £24 and £16 respectively - members may apply for more than one unit if they so wish!

A monthly bankers order form can be obtained from our Treasurer, David Kilgour, "Willowbank", Peebles Road, Galashiels, TD1 1TH. If you return it to him before the 10th of the month, then you will be eligible to be in the draw for that month.

Recent Winners:

	1 st	2 nd
July 1999	I. Mackintosh	K.B. McAlpine
August 1999	P.M. Giulian	P. Wildig
September 1999	C.M. Dowell	G.D. Pyrich
October 1999	D.M. Livie	A.P. Borwell
November 1999	J. Anderson	G.W.G. Livie
December 1999	K.B. McAlpine	G.W.G. Livie
January 2000	G.D. Pyrich	J. Kilgour
February 2000	A.P. Borwell	J. Anderson
March 2000	D.M. Livie	J. Murray



GAMES SECTION

Selected by GAMES EDITOR Bernard Milligan,
15 Bothwell Court,
Hawick.
TD9 7EP.



Since starting this column, I seem to be constantly pleading for games to be sent in. Thankfully just about enough players respond to allow me to fill a column, but it would be nice to see a few new contributors giving it a go. It would be nice to be spoilt for choice.

If you're unsure about annotating, then try just sending the game moves of one of your games that you found interesting. I will get Fritz to annotate it first and send it back to you. You can then use that to help you do your own annotations for submission to the column. Annotating your games will be a rewarding experience and help you immensely with your future games.

We start this issue with a game sent in by Phil Giulian who has a talent for highlighting both his good and bad points in a game an essential skill for future improvement.

European Championship
White: P Giulian
Black: O Neuvonen

Old Indian [A53]
[Annotator - P Giulian]

- | | | |
|---|------|------|
| 1 | d4 | ♟f6 |
| 2 | c4 | d6 |
| 3 | ♟c3 | ♟bd7 |
| 4 | e4 | e5 |
| 5 | d5?! | |

Not having faced this opening for about 15 years, I show my ignorance. Better is ♟f3, ♟e2 and 0-0 which gives White a clear edge.

- | | | |
|---|-----|------|
| 5 | ... | h6!? |
|---|-----|------|

Black intends ♟e7, ♟h7 and ♟g5 eliminating his bad Bishop.

- | | | |
|---|-----|-----|
| 6 | ♟e3 | ♟e7 |
|---|-----|-----|

- | | | |
|---|----|--|
| 7 | f3 | |
|---|----|--|

To obtain any advantage, it is important to avoid the Bishop exchange. My plan is to meet a ♟g5 with ♟f2 and h4.



Now I want to castle queenside and use a pawn storm against the black King. Unfortunately I can't play ♟d2 because after Black plays ♟g5 I could no longer play the necessary ♟f2.

- | | | |
|----|------|-----|
| 8 | ♟d3 | ♟c5 |
| 9 | ♟c2 | c6 |
| 10 | ♟ge2 | |

I was tempted by b4 but was unsure what to do with my King after it.

- | | | |
|----|------|-------|
| 10 | | cxd5 |
| 11 | cxd5 | ♟b6?! |
| 12 | ♟d2! | ♟h5? |

This wastes two tempi. Better is ♟d7. Note that Black cannot play 12...♟xb2 13.♟b1 ♟a3 14.♟b5 ♟xa2 15.♟c1 ♟c4 16.♟b4 winning.

- | | | |
|----|-------|-----|
| 13 | 0-0-0 | ♟f6 |
| 14 | g4 | ♟d7 |
| 15 | ♟g3 | |

I was tempted to play the immediate h4 but became confused by Black's h5.

- | | | |
|----|------|-----|
| 15 | | ♟h7 |
|----|------|-----|

- | | | |
|----|----|-----|
| 16 | h4 | ♟d8 |
|----|----|-----|

I had expected 16 ... f6 17 ♟f5 ♟f7 18 ♟dg1 with a promising attack.

- | | | |
|----|-------|--|
| 17 | ♟xc5? | |
|----|-------|--|

I didn't like this move at the time and like it even less now. I wanted to play ♟h2 but felt Black could probably reply with ♟b6. However this is much better than what I played.

- | | | |
|----|-----|------|
| 17 | ... | dxc5 |
| 18 | ♟h2 | ♟d6 |
| 19 | g5 | g6! |

Sacrifices the h-pawn but it is not clear how I proceed afterwards. h5 is met by g5. Meanwhile Black has a queenside attack.

- | | | |
|----|------|------|
| 20 | h5!? | ♟e7! |
|----|------|------|

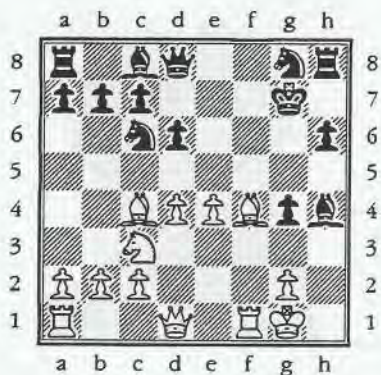


If 20 ... ♟xg5+ 21 ♟b1 and after ♟dg1 White has a strong attack. After ♟e7 I am forced into winning a pawn, but giving up my attack because Black now threatens to play hxg5 because the Queen defends the Knight on h7.

- | | | |
|----|------|------|
| 21 | h×g6 | f×g6 |
| 22 | g×h6 | ♟h8! |

I had been hoping for 22 ... ♟xf3 23 ♟f5!! gxf5 24 ♟dg1+ ♟h8 25 ♟g7 ♟d8 26 ♟h5 threatening the Rook and also ♟xh7+ and ♟f7 mating.

- | | | |
|----|-----|------|
| 23 | ♟g2 | ♟g5+ |
|----|-----|------|



This move had failed in 2 previous outings, however it is not easy to see how White should take advantage of the tempo used by Black. An alternative line is 11 ... f6 12 d2 h5 13 e3 f6 14 d5 h4 15 e5 e6 16 f6 xc4 17 hx5+ g6 18 f4+ h7 19 c3 e8 20 c2+ g7 21 f5 g5 22 d5 xf1 23 e6+ g8 24 xg5 d3 25 xd3 xe5 26 f5 hg5 27 e1 h5 28 xg5 h2+ , 0-1 A. Brenke-T.Halasz, Dortmund 1990.

12 d2

12 xd6 xd6 (12 ... $\text{xd6!$ and I cannot find a continuation for White that wins) 13 f7+ g6 14 e5 1-0 J. Kirimaki - P.Lehtinen 1992; or 12 e3 f6 13 d2 d7 14 g3 xg3? (14 ... a5 15 d5 xd5 16 xd5 c6 17 f4 c4 18 f2 f8 19 gxh4 xe3 20 xe3 hx4 and now White is just a pawn down) 15 g5 xe4 16 f7+ g6 17 xe4 hg5 18 xg3 b4 19 af1 h3 20 e4 1:0 Claridge-Cody 1997.

12 a6?!

This move is slow and White will be able to build some initiative before Black's play on the queenside can become dangerous. I think Black's development should have been taking priority.

13 g3



This was played to allow White's Rooks to double up on the f-file. Control of this file is the most important feature of the game. All White's efforts are aimed at this goal.

- 13 e7
- 14 f2 f6
- 15 af1 $\text{b5?!$
- 16 d5 $\text{d7?!$

This move blocks the black Queen's power down the d-file. The influence of the black Queen had been preventing White pushing onto e5. If 16 ... xd5 17 xd5 e6 18 xe7 xe7 19 d5+= or 16 ... d7 17 g5! xd5 18 f7+ g8 19 hx6+-

- 17 e5 xd5
- 18 xd5 e6
- 19 h2! g5

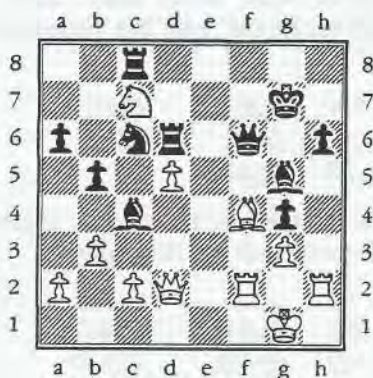
19 ... xd5 20 hx6+ g8 21 d3 e8 22 f5+- .

20 xc7 c4
If 20 ... xc7 (a deflection) 21 xg5!

- 21 exd6 f6
- 22 ff2 ad8
- 23 d5 xd6

23 ... xf4 24 xf4 xd6 25 c3+-

24 b3 c8



I had missed this move! It came as a surprise and put doubts in my mind about my position. But after some more analysis I was able to recover from the shock.

- 25 bxc4 xc7
- 26 c5 dd7
- 27 h5 xf4
- 28 xf4 g6
- 29 hf5 h7
- 30 f6 g5
- 31 d3+ g7
- 32 f5 g6

- 33 c3+ h7
- 34 f8

34 $\text{dxc6?!$ xc6 35 f8 g7=

- 34 g7
- 35 f8f6

35 $\text{dxc6?!$ xc6 36 f8f6 xf6 37 e4+-

- 35 g5
- 36 d3+

36 $\text{xc6?!$ is no comparison! 36 ... xd5 37 xa6 xc5+ 38 xc5 xc5=

- 36 h8
- 37 dxc6

37 $\text{xc6?!$ xc6 38 dxc6 xc5+ 39 d4 xc6+=

- 37 ce7

37 ... g8 38 d6 h7+-

- 38 g2 g8
- 39 f7

1 0

39... g7 40. f8+ g8 41. f7 f7+-



Dave Savage has been busy as he annotated the next three games.. Three different styles of game which highlight perfectly the rich variety that correspondence chess can throw your way.

SCCA v Brazil
White: P de Silva
Black: D.J. Savage

Alekhine Defence [B02]
[Annotator - D J Savage]

- 1 e4 f6
- 2 e5 d5
- 3 xc3 xc3
- 4 bxc3 g6
- 5 d4 d5

This seemed a good idea at the time, aiming to immobilise White's pawn centre. White's alternative of 6 exd6 en passant has the same effect.

- 6 f3 g7
- 7 d3 0-0?

This move looks illogical. With hind-sight, why not leave the King behind a blocked pawn centre?

- 8 g5 c5?

Aiming to either destroy White's pawn centre if he opts for 9 dxc5 Qxe5 or immobilise it completely by playing c4 next. But...

9 ♖xh7!

Never saw it coming (not quite the words used at the time). Now it is going to be a struggle just to survive.

9 ♖xh7

Looks no better a position than playing 9 ... ♖e8; or 9 ... c4 10 ♖xf8 cxd3 11 ♖xg6 but at least a piece as compensation.

10 ♖h5+ ♖g8
11 ♖h4 c4
12 ♖e2 f5

A desperate attempt to create space. I need to be able to move around the blocked centre if I am to defend against White's kingside pawns.

13 ♖g5 ♖c6
14 f4 ♖f7
15 g4 ♖h8
16 ♖g3 ♖h6
17 h4 ♖xg5
18 fxg5 e6

At last, a gap to work through.

19 h5 ♖e7

Not 19 ... ♖xg5 as 20 hxg6+ and lose Rook; while 19 ... ♖d7 20 hxg6+ ♖xg6 21 gxh5+ exf5 looks equally big trouble.

20 ♖d2 ♖d7
21 ♖f3 ♖c6
22 ♖h4 ♖d7
23 ♖ah1



23 ♖af8

Probably better to play 23 ... ♖ag8 when 24 hxg6+ ♖xg6 25 ♖h7+ ♖xh7 26 ♖xh7+ ♖g7

24 hxg6+ ♖xg6

25 ♖h7+ ♖xh7
26 ♖xh7+ ♖e8
27 ♖xd7

White has regained the sacrificed piece, but can he capitalise on his passed pawn?

27 ♖xd7
28 ♖c1 f4!

And White has missed the chance to play gxf5. Now the locked pawns reduce the mobility of the white Queen, and help me hang on.

29 ♖g2 ♖c6
30 ♖b2 ♖d7
31 ♖a3 a5
32 ♖b2 ♖c7
33 ♖c1 b6
34 ♖d2 ♖g8
35 ♖h3 ♖h8



The barrier is complete. With the Knight on g6 covering the pawn on f4 and Rook on h8, with the King on b7 or c7, the Bishop on c6 covering ♖xd5 and the Rook free to move to d8 to stop ♖d6+, White has no way through without sacrificing a piece. The only remaining problem is to convince White he can't win.

36 ♖g2 ♖g8
37 ♖e2 ♖h8
38 ♖f2 ♖h4
39 ♖h2 ♖g6

♖xf3 is fatal as it frees g5.

40 ♖g1 ♖b7
½ ½

A sense of both relief and achievement!



WT/1/1293

White: B Heinz
Black: D Savage

Rete Wolf Gambit [A12]
[Annotator - D J Savage]

1 ♖f3 d5
2 c4 c6
3 b3 ♖f6
4 g3 ♖f5
5 ♖g2 ♖bd7
6 cxd5 cxd5
7 ♖b2 e6

♖h4 (move 11) can be played anytime now.

8 ♖c3 ♖b4
9 0-0 0-0
10 ♖c1 ♖c8
11 ♖h4

This move forces some sort of Knight for Bishop exchange, leaving me with doubled and/or isolated pawns. I try and pick the least unattractive option.

11 ♖b6
12 ♖xf5 exf5
13 e3 ♖e4?!

Rose-tinted spectacle time! Nice would be ♖xe4 dxe4 uniting my pawns. Even better d3 and ♖xc3 wins a piece. But...

14 ♖h5!

So much for strategy and tactics. I need some good ideas quickly now: the obvious g6 Qh6 leaves an Nxe4 mate threat. Why not get rid of the Knight?

14 ♖xc3
15 dxc3

The threat of ♖e2+ forces White to capture the Knight. This option leaves a fight for the long diagonal. The alternative ♖xc3 ♖xc3 dxc3 destroys White's threat.

15 g6
16 ♖h6



Now the problem is to deal with cxb4 (move it?) or c4. Time to break all the rules of sensible places for a Queen (i.e. get desperate).

16 ♖f6!
17 ♜c2

White attempts to win a piece (as the game) by cxb3. But it is a position of who "gets there firstest with the mostest".

17 ♗xc3!
18 ♖a3

White declines the Bishop exchange, while setting up another mate threat.

18 ♜fd8
19 ♜fc1 ♗e5

Time to give up the isolated pawn.

20 ♜xc8 ♖xc8

Not 20 ... ♜xc8 when 21 ♜xc8+ ♖xc8 22 ♗f8# is mate.

21 ♗xd5 b6
22 ♜c6 ♗g7

♖d6 fails to ♜c7.

23 ♗h4



I'm still wriggling like the proverbial worm, but what now? Not ♜xd5 as ♜xc8, while if ♜e8 then ♗c4 looks nasty.

23 ♗f6?!
24 ♖b2?

♜xf6 better for White, when if ♜xd5, ♜c6 wins for White, but g5 might save Black. Now I can win a piece.

24 ♗xh4!

Not ♗xb2 when ♗xd8.

25 ♗xg7 ♗xg7
26 ♖c4

If g×h4 ♖e7 forks Bishop and Rook.

26 ♗f6
27 ♜c7

If ♗a6 ♖e7 ♜e7 ♖d1+ leads to an exchange of pawns.

27 ♖d6
28 ♗d5

If ♜xa7 ♖xc4 bxc4 ♖d1+ will regain the pawn. It is most enjoyable watching White wriggle for a change.

28 a5
29 ♗g2 ♖b2

Aiming for ♗a3 to free my Rook, and also block the a pawn.



White has no good moves left, e.g. if ♜c6 ♖c8 ♜c7 ♜xd5. He tries to disrupt my kingside pawns.

30 f3 ♜c8
31 ♜c6

This allows me to exchange Rooks, while if White plays ♜d7, ♗a3 and Black's Rook is free.

31 ♜xc6
32 ♗xc6 ♗a3
33 ♗f2 h5
0 1

And White has no viable options left.



White: C Dullaert
Black: D Savage

Grünfeld Defence [D86]
[Annotator - D J Savage]

1 d4 ♖f6
2 c4 g6
3 ♖c3 d5
4 cxd5 ♖xd5
5 e4 ♖xc3
6 bxc3 ♗g7
7 ♗c4 0-0
8 ♖e2 ♗d7
9 0-0 b6
10 ♗d3

♗e3 is recommended as more flexible (Baumbach, SCC no 29.). Whatever, as Black I don't like the

threats from White's d and e pawns advancing.

10 c6
11 e5 b5
12 ♗b3 c5
13 ♗e3

c4 looks a viable alternative to leave a wide open queenside.

13 c4
14 ♗c2 e6
15 a4



Well, I've more or less immobilised White's pawn centre. I've driven the Bishop off the f7 diagonal, and his Queen off the g6 diagonal; ♖c6 plus ♖d7 should cover Kingside attacks. But I've neglected ♗b7 first! Now I'm forced to split the queenside pawns. At least I get a passed pawn!

15 ♗a6
16 axb5 ♗xb5
17 ♗h3

Now comes the kingside attack.

17 ♖c6
18 ♗h6 ♖e7
19 ♗xg7 ♗xg7
20 ♜fb1 a5

a6 gives a strong defensive wall, but this pawn is my only way to attack, so push it!

21 ♖g3

Threatening ♖e4 then ♖f6. This move would have been stronger played before ♗xg7. I was more worried by ♖f4 plus ♗e4 plus d5. So keep pushing that pawn.

21 a4
22 ♖e4 ♖g8
23 ♜a3 ♜fb8
24 ♖c5 ♗e8
25 ♜b4

Trying to win one of the isolated pawns. Fortunately ♜b1 is mate!



25 ♖e7
26 ♜f3 ♕d5!

Blocking the a8 diagonal and threatening Nxb4 while the ♖b1+ threat stops ♖xb5 ♖xb5 ♕xa4.

27 ♖b1 ♖a5
28 ♕e4 ♕c6

Time to use the Rb1+ threat. I expected ♖ba1 and a struggle to keep the a pawn.

29 ♜g4 ♖xb1+
30 ♕xb1 ♖b5

Restores the ♖b1+ threat. Now if ♖xa4 ♖xb1 is mate, if ♕c2 then ♖b2 and if ♕e4 then ♖xc3! So the only reply

31 ♕a2 ♜b8!

If ♖xa4 or ♖xa4 then ♖b1+ ♕xb1 ♜xb1 mate. If ♖xe6+ fxe6 ♜xe6 then ♖b1+. If ♕xc4 ♖b1+ ♕f1 ♖xf1+ ♜xf1 ♜b1+ ♜e2 ♜b2+. If g3 ♖b1+ ♕xb1 ♜xb1 ♜g2 ♖c3+ wins Queen. A probably viable option is h3 when ♖b1+ ♕xb1 ♜xb1 ♜h2 ♜b2. White opts for the other line that makes me work.

32 ♜e2 ♖b2
33 ♜e1

If ♜e4 ♖b4!

33 ♖xc3
34 ♖xc3

If ♕xc4 or ♜xc3 then ♖b1 wins.

34 ♖xa2
35 ♖xc4 ♜b2
36 ♖d3



Threatens both ♖xb2 and ♖xc6. But my threat is bigger!

36 ♖a1
37 ♖c1

Both ♖xc6 ♖xe1 ♖xe1 ♜xd4 and ♖c1 ♖xc1 ♜xc1 ♜xd4 ♜xc6 ♜xd3 look favourable to Black.

37 ♕d5
38 ♖c3

If ♜c3 a3 also wins.

38 a3
0 1

And the isolated, vulnerable pawn of move 15 cannot now be stopped.



Finally another game from regular contributor David Cumming. David repays Alan Armstrong's contribution from the last issue.

SCCA Challenge 1998/99

White: A Armstrong

Black: D R Cumming

Pirc Defence [B08]

[Annotator - D R Cumming]

1 d4 ♖f6
2 ♖c3 g6
3 e4 d6
4 ♖f3 ♕g7
5 ♕c4 0-0
6 ♜e2 ♖c6
7 d5?!

Taking me out of book. I was expecting 7.e5 or 7.h3. I didn't really understand 7.d5?! at the time, it struck me as rather illogical to play 5.♕c4 and then voluntarily block off the c4-g8 diagonal, to say nothing of taking away valuable support for the kind of move that he should've been thinking about playing either immediately or sometime in the near future, namely e5.

7 ♖a5
8 ♕d3 c5!
9 0-0 a6
10 a4

Played to prevent the obvious b5 and c4, winning the Bishop.

10 b6
11 ♕d2 ♜c7!

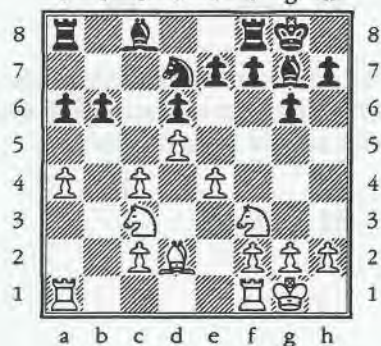
Intending 12 ... c4, winning the Bishop.

12 b3 c4!

Played anyway.

13 ♕xc4 ♖xc4
14 ♜xc4 ♜xc4
15 bxc4 ♖d7

a b c d e f g h



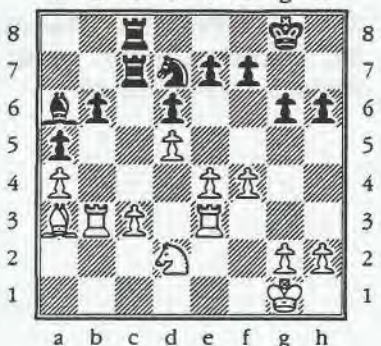
White's queenside pawn formation has been broken up at the cost of a temporary pawn sacrifice, the Queen's have been exchanged, and I believe that Black now has a slight advantage.

16 ♖ab1 ♖a7!
17 ♖d1 ♖c7
18 ♖e3 a5
19 ♕c1 ♕a6!
20 ♖d2 ♕d4
21 ♖e1 ♕xe3
22 ♖xe3 ♕xc4
23 ♕a3 ♕a6
24 c3 h6

A suitable time for a little prophylaxis.

25 f4 ♖fc8
26 ♖b3?!

a b c d e f g h



26 Bc1 was better. His actual 26th invited me to play the following . . .

26 Qc4
 27 Bb1 Qf6!
 28 Bxb6?

Falling for it, hook, line and sinker. And what about all of those tempi he has lost moving his Rook up and down the b-file?

28 Qxd5!
 29 Bb5 Qa2!

Now his Rook can't go home to its back rank.

30 Bxa5 Bxc3
 31 Bxc3 Bxc3
 32 Qb4 Bc2
 33 Ba7 e6
 34 a5?

White dreams of promoting his a-pawn, but in the process takes away a vital square from his Bishop.

34 d5!
 35 e5

35 exd5?? Qxd5 and White loses a minor piece.

35 Qe4!
 36 Ba8+ Qh7
 37 Qxe4 dxe4
 38 Ba7 Qg7
 39 Qe7 e3!
 40 Qf6+ Qh7

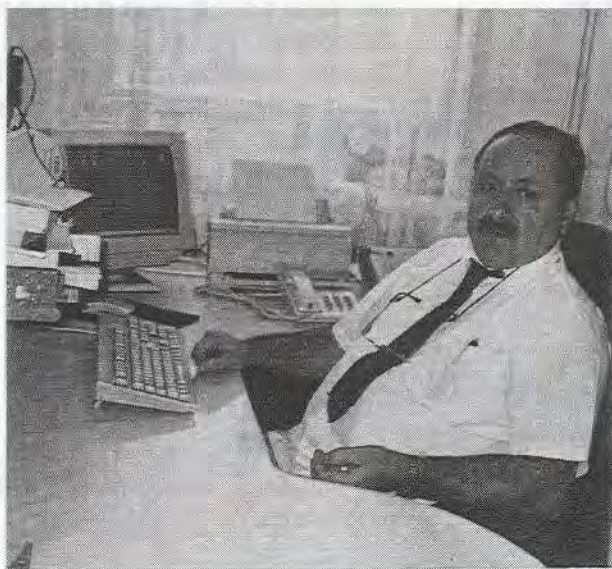


Of course not 40 ... Qg8 41 Ba8+ Qh7 42 Bh8* . At this stage of the game, both sides were threatening mate.

41 h3 Bc1+
 42 Qh2 g5!
 43 Bxf7+ Qg6
 44 Bg7+ Qf5
 45 Qe7? gxf4
 0 1

One possible finish could have been 46 g4+ Qxe5 47 Qf6+ Qxf6 48 Bh7 Qd5! 49 Bxh6+ Qg7 50 Bg6+ Qxg6 51 a6 Bh1* .

At any rate, White's King position, in tandem with Black's advanced f and e-pawns and the light-squared Bishop, which has a wonderful square on d5, guarantee Black the full point. So, if you're scared of the 'ancient history' Blackmar-Diemer Gambit quick win over me that Alan was bragging about in the Winter 99/00 Games Section (circa 1996), the moves that I've supplied here are a good way to avoid it!



ICCF Playing Rules Commission Chairman, Dr. Jaromir Canibal, sitting in his office in Karvina, Czech Republic.



Team Captain, Rudolf Sevecek, receives the gold medals and certificates for the successful Czech/Slovak team in Olympiad Final XI, from the ICCF President in Thun. Qualifications Commissioner, George Pyrich, ensures that the medal presentations are done correctly!

NBC 30

[by George Pyrich]

Shortly after the 1996 ICCF Congress, I was very pleasantly surprised to receive an invitation from the then ICCF President Henk Mostert to participate this event, being held to commemorate the 30th Anniversary of the Dutch CC Federation, NBC (Nederlandse Bond van Correspondentieschakers).

Naturally, despite my already heavy schedule, I was very pleased to accept! Only a short while beforehand, I had acquired a copy of the excellent tournament book of the NBC 25 event, a mammoth star-studded 21 player tournament which included 10 GM's. As can be seen from the cross-table below, whilst NBC 30 was not nearly as strong as its predecessor, the list of entrants, with an Average Rating of 2460, was still fairly impressive. The only GM, the popular German Achim Soltau, who had achieved his title in NBC 25, was pre-tournament favourite when play began on 1 April 1997 but will likely have to settle for a share of 1st place (or less)(I suspect however that Achim was concentrating his efforts on the 15th World Championship Final) after losing 2 games.

As indicated by the closeness of the final placings, this was a competitive and hard-fought event and, after 3 years play, only one game (with an important bearing on the final places) remains unfinished. Despite my disappointment with my rather erratic play, I greatly enjoyed this event which was conducted by all the competitors in a friendly and sporting spirit. Although I finished well short of the IM Norm of 7.0 points, I had the satisfaction of fulfilling my "seeding" as the second lowest rating.

The organisers intend to produce a book of the event in due course and I, for one, very much look forward to acquiring a copy.

					1	2	3	4	5	6	7	8	9	10	11	12	13	14	15	Total
1	Boom, Wim H.	IM	NLD	2455	½	½	½	0	½	1	1	0	1	0	½	½	½	0	6½	
2	Prokopp, Heinz		GER	2370	½	1	½	½	½	½	1	½	0	½	1	½	1	½	8½	
3	Oksanen, Yrjo		FIN	2390	½	0	½	0	½	0	1	½	1	½	½	½	0	0	5½	
4	Compagnie, Luc		NLD	2455	½	½	½	0	½	½	½	½	½	0	0	1	1	½	6½	
5	Soltau, Achim	GM	GER	2565	1	½	1	1	1	0	½	½	1	1	½	0	1	½	9½	
6	Backlund, Ake	IM	FIN	2430	½	½	½	½	0	½	0	½	0	0	0	½	½	½	4½	
7	Stuart, A.J.		NLD	2455	0	½	1	½	1	½	½	0	½	½	1	½	½	½	7½	
8	Sorensen, Bent	GM	DEN	2540	0	0	0	½	½	½	½	0	½	½	0	0	½	½	4	
9	Plomp, Michel		NLD	2440	1	½	½	½	½	½	1	1	1	½	½	1	½	9		
10	Hebels, Albert		NLD	2420	0	1	0	½	0	1	½	½	0	1	½	½	½	0	6	
11	Jacot, Laurent		SWZ	2440	1	½	½	1	0	1	½	½	½	0	½	½	½	½	7½	
12	Walker, Georg	IM	SWZ	2440	½	0	½	1	½	1	0	1	½	½	½	½	½	½	7½	
13	Fries Nielsen, Jens-Ove		DEN	2620	½	½	½	0	1	½	½	1	½	½	½	½	1	0	7	
14	Pyrich, George	IM	SCO	2375	½	0	1	0	0	½	½	½	0	½	½	½	0	0	4½	
15	Kahn, Manfred	IM	GER	2500	1	½	1	½	½	½	½	½	1	½	½	1	1	9½		

NBC 30, 1997

White: A. Soltau (GER)

Black: G.D. Pyrich (SCO)

King's Indian Defence E99

The following game, played by FAX, was my first to finish. I found myself being outplayed in a topical line of the King's Indian by the pre-tournament favourite. Annotations are based upon Achim Soltau's comments.

1 d4 ♘f6
 2 c4 g6
 3 ♘c3 ♗g7
 4 e4 d6
 5 ♘f3 O-O
 6 ♗e2 e5
 7 O-O ♘c6

8 d5 ♘e7
 9 ♘e1 ♘d7
 10 ♗e3 f5
 11 f3 f4
 12 ♗f2 g5
 13 ♖c1 ♖f6

Here I wanted to follow the game Piket - Kasparov, Linares 1997, which the World Champion should have lost; but my friend George followed Uhlmann's move from an older game: 13 ... ♘g6 14 c5 ♘xc5 15 b4 ♘a6 16 ♘d3 h5 17 ♘b5 ♗d7 18 a4 ♗h6 19 ♖c3 b6 20 ♗e1 ♖f7 21 ♘f2 ♘h4 22 ♘xd6 cxd6 23 ♗xa6 ♖e8 24 ♖e2 g4 25 fxg4 ♖g7 26 h3 ♖g6 27 ♗b5 ♗xb5 28 axb5 ♖f8 29 ♘d1 hxg4 30 ♗xh4 f3 31 ♖c2 gxh3 32 g3 ♖f4 33 ♘e3 ♖xe4 34 ♘f5 ♖xf5

35 ♖cx3 ♖g4 36 ♗h1 ♖f4 37 ♖3f2 ♖xf2 38 ♖xf2 e4 39 ♖f6 e3 40 ♖e6 ♖f3+ 41 ♗g1 ♖f7 42 ♖g6+ ♗g7 43 ♖e8+ ♖f8 44 ♖xf8+ ♗xf8 45 ♗e7+ ♗g8 46 ♖e6+ ♖f7 47 ♖c8+ ♗f8 48 ♖g4+ ♗g7 49 ♖c8+ ♗h7 50 ♖xh3+ ♗h6 51 ♗g5 ♖f2+ - Piket, J - Kasparov, G, Linares 1997 (51).

14 ♘d3

14 b4 ♖h6 15 c5 a6 16 cxd6 (16 c6 is interesting, whilst 16 ♘d3 ♖e8 17 ♗e1 ♖h5 18 h3 ♘xc5! 19 bxc5 ♗xh3 20 ♖f2 ♗d7 21 ♖f1 ♗f6 22 ♗d2 ♖h2+ 23 ♗f2 ♖g3+ 24 ♗g1 ♖h2 25 ♖f2 ♖h4, 0-1, Ramos - Bologan, Las Palmas, 1993, shows the pitfalls facing White.

16 ... cxd6 17 g4?! fxd3 18 hxg3
 ♖g6 19 ♖g2 ♖f4!! was Speelman
 - Uhlmann, St Petersburg, 1984
 which Black won brilliantly in 37
 moves.

14 ... ♖h6
 15 c5 ♗e8?!

Going for it, but the more prudent
 15 ... a6 was called for.

16 h3 ♖f6
 17 ♖e1!

Considerably better than 17 cxd6
 when 17 ... cxd6 18 ♗h2?! ♗h5 19
 ♖h1 g4 20 fxd4 ♖xg4+ 21 ♗g1
 ♖xf2 22 ♖xh5 ♖xd1 23 ♖xd1
 ♖g6 24 ♖b5 ♖d7 is decidedly
 unclear.

17 ... ♖g6
 18 cxd6 cxd6
 19 Qb3



White is clearly better; his queen-
 side attack went faster than Black's
 counterplay on the other side of the
 board.

19 ♖h4
 20 ♖b5!

20 ♖f1 ♖xf3+ 21 gxf3 ♗h5 22 h4
 g4 23 ♖b5 (23 ♗a3 gxf3 24 ♗xd6
 ♗g4+ 25 ♗h2 ♖xh4+ 26 ♖xh4
 ♗xh4+ 27 ♗g1 ♖g4 28 ♖c2
 ♗g3+ 29 ♗h1 f2 30 ♗d8+ ♗f7 31
 ♗c7+ ♗g6 32 ♖xf2 ♖xf2+ 33
 ♖xf2 ♗xf2 34 ♖c1 ♖g4 35 ♖g2
 f3 +-) 23 ... gxf3 24 ♗h1 ♖g4 25
 ♗c2 ♖xf2+ 26 ♗xf2 ♗g4 +- was
 the sort of line Black was hoping
 for!

20 ♖xh3?!

Maybe 20 ... ♖xg2 was better.

21 ♖xd6 ♗d7
 22 ♖xh4 gxh4
 23 ♗xb7

Clarifying the situation definitely.

23 ♗xb7

23 ... ♖f8 24 ♖c7 is crushing for
 White.

24 ♖xb7 ♖g6
 25 ♖f1 ♖e8
 26 ♗f2 ♖d7
 27 ♖a4 ♖b8
 28 b4 0

♗♗♗♗♗♗

NBC 30, 1997

White: H. Prokopp (GER)
 Black: Y. Oksanen (FIN)

French Defence - Winawer C19

Annotations to the following game
 are based on comments by Heinz
 Prokopp

1 e4 e6
 2 d4 d5
 3 ♖c3 ♖b4
 4 e5 c5
 5 a3 ♖xc3+
 6 bxc3 ♖e7
 7 ♖f3 b6

Better was 7 ... ♖bc6 when 8 ♖d3
 ♗a5 9 ♖d2 c4 is equal.

8 ♖b5+ ♖d7
 9 ♖d3 ♖a4

9 ... h6 was preferable, for example
 10 O-O ♖bc6 11 ♖e1 O-O 12 ♖f4
 c4=.

10 O-O ♗c7
 11 ♖e1 ♖bc6
 12 ♖f4 O-O
 13 ♗d2



13 ♖ac8?

13 ... c4 better 14 ♖e2 ♖g6 15
 ♖e3 ♖ce7 =.

14 ♖g5 g6
 15 ♖f3 cxd4?

15 ... c4 16 ♖e2 4f5=.

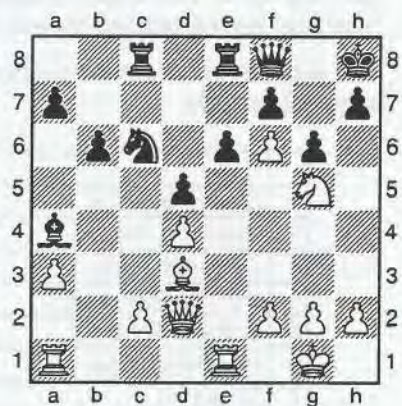
16 cxd4 ♗h8??

He had to play 16 ... ♖f5.

17 ♖h6

White's attack soon becomes
 irresistible

17 ♖fe8
 18 ♖g5 ♖g8
 19 ♖f6+ ♖xf6
 20 exf6 ♗d6
 21 ♖g5 ♗f8



22 ♖xh7! ♗xh7
 23 ♖e3 ♗h6
 24 ♖h3 ♗xh3
 25 gxh3 ♖h8
 26 ♗g5 ♖b8
 27 ♖e1 ♖e8
 28 f4 ♗g8
 29 f5 ♖h5
 30 ♗e3 exf5?

Black was lost anyway.

31 ♗xe8+
 1 0
 ♗♗♗♗♗♗

NBC 30, 1997

White: Y. Oksanen (FIN)
 Black: G.D. Pyrich (SCO)

Queen's Gambit Declined D58

I finally managed to win one game
 in this, my last to finish.

1 c4 e6
 2 ♖c3 d5
 3 d4 ♖e7
 4 ♖f3 ♖f6

5 ♖g5 O-O
 6 e3 h6
 7 ♗h4 b6
 8 ♗e2 ♗b7
 9 cxd5 exd5
 10 O-O ♖bd7
 11 ♖c1



11 ♗e4

11 ... c5 is the most popular move here when 12 dxc5 is most commonly played. Instead 12 ♗b5 is not so good, 12 ... ♖c8 13. dxc5 bxc5 14 ♖e1 ♗b6 15 ♖e2 ♗e4 16 ♗xe4 dxe4 17 ♗xe7 ♖xe7 18 ♗d2 ♖fd8 19 ♖c2 ♖d8 20 ♗c4 ♖g5 21 ♗a5 ♗d5 22 ♖ec1 ♗e6 23 ♗a6 ♗h3 24 g3 ♖c7 25 a3 ♗d7 26 ♗c4 ♗g4 27 ♖e1 ♖e6 28 ♗b5 ♖h5 29 ♗d2 ♗e5 30 b4 ♗f3, 0-1, Brilla-Banfalvi - Sandor, FINJUB 20, 1992, shows some of the chances available to Black, and 12 ♖c2 saw Karpov suffer one of his worst defeats after 12 ... a6 13 ♖fd1 c4 14 a4 ♗c6 15 ♗e5 ♖c7 16 ♗xc6 ♖xc6 17 ♗f3 ♗b4 18 ♗xd5 ♗xd5 19 ♖f5 ♖xa4 20 ♗xd5 ♖ac8 21 b3 cxb3 22 ♖xc8 ♖xc8 23 ♖xf7+ ♗h8 24 ♗xb3 ♖b5 25 ♗e6 ♖f8 26 ♗xd7, 1-0, Hort - Karpov, Amsterdam, 1980. 12 ... bxc5 13 ♖a4 a6 14 ♖fd1 ♖b6 15 ♖b3 ♖a7 16 ♗g3 ♖ad8 as in Topalov - Kasparov, Sofia, 1998 when 17 ♗h4 aiming for f5 would have been good for White, whilst 11 ... c6 12 ♖c2 ♖e8 13 ♖fd1 ♗f8 14 ♖b1 is solid if boring.

12 ♗xe7 ♖xe7
 13 ♖b3 ♗df6
 14 ♖c2?!

I suspect he intended first 14 ♗xe4 ♗xe4 and then 15 ♖c2 ♖fc8 16 ♖fc1 c5 17 ♖a3 ♖c6 18 dxc5

bxc5 19 ♗d4 ♖g6 with chances for both sides in Portisch - Vaganian, Niksic, 1978.

14 c5
 15 ♗e5?!

I'm not sure what his idea here was.

15 c4
 16 ♖b5 ♗d6
 17 ♖b4



17 ... a5!
 18 ♖a4

Not 18 ♖xb6?? ♖fc8 with ♖a6 to follow, trapping the white ♖.

18 ♗fe4
 19 ♗f3 ♗xc3
 20 ♖xc3 b5

A fairly easy position to play where Black's plan is simply to advance on the ♖-side.

21 ♖d1 b4
 22 ♖c1 a4
 23 ♖d2 ♗b5
 24 ♖e2 ♖a5
 25 ♖b1 ♖fa8
 26 ♖c2 b3



With a winning position for Black. White now tries to generate some counterplay on the ♖-side but it's already too late.

27 axb3 axb3
 28 ♖f5 ♗d6
 29 ♖f4 ♖8a6

Planning to "treble" on the a-file and play ♖a1.

30 ♗h5 ♗c8
 31 ♗g4 ♗xg4
 32 ♖xg4 ♖a7
 33 h3 ♖a1
 34 ♗h2 ♖xb1
 35 ♖xb1 ♖c7

Trying another tack as 35 ... ♖a1 36 ♖d1 doesn't lead anywhere.

36 ♖d1 ♗e4
 37 f3 ♗d6
 38 ♗g1 ♖c8
 39 ♖e1 ♖a2
 40 e4

Virtually forced as Black planned 40 ... f6 with ♖e8-g6-c2 to follow.

40 dxe4
 41 fxe4 ♖e6!
 42 ♖b4 f6
 43 ♗xc4

Giving up the piece but there was nothing better.

43 ♗xc4
 44 ♖xb3 ♖a6
 45 ♖d3 ♖a7
 46 b3 ♗d6
 47 ♖e1 ♖e7
 0 1

The e-pawn soon falls and Black will convert the material advantage.

♖♖♖♖♖♖

NBC30, 1997

White: T. Stuart (NLD)
 Black: A. Soltau (GER)

Sicilian - Morra Gambit B21

Finally, Achim Soltau sportingly provides the following game.

This was my "most expensive" game of the event. My move 30 probably cost me 1925 Swiss Francs, the difference between first and third prizes.

1 e4 c5
 2 d4 cxd4
 3 c3 dxc3
 4 ♖xc3 e6
 5 ♖f3 ♗c6
 6 ♗c4 d6
 7 O-O ♗e7
 8 ♖e2 ♗d7
 9 ♖d1 a6
 10 ♗f4 e5
 11 ♗e3 ♗f6

12 ♖ac1 O-O
 13 a3
 13 h3 would be Parma-Eliskases again.

13 b5
 14 ♗d5 ♖c8
 15 h3 h6

It is better to threaten ♗xd5 than to play it. In a higher sense White suffers from "Zugzwang".

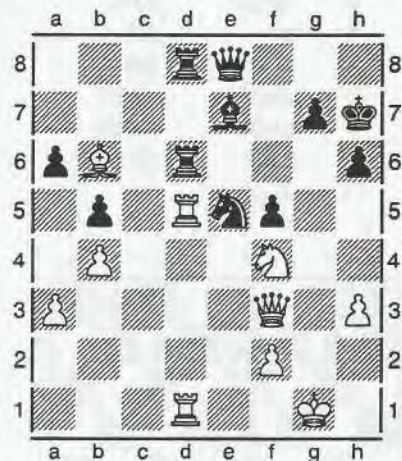


This position is well known from the game Parma - Eliskases, Mar del Plata (12) 1962. The books find the white position a little better, which is totally wrong. In my opinion, White does not have sufficient compensation for the pawn.

16 b4 ♖e8!
 17 ♗a2 ♗e6
 18 ♖d3 ♗xa2
 19 ♖xa2 d5
 20 exd5 e4
 21 ♖f1

21 ♖c2!? ♗xb4 22 ♖xc8 ♖xc8
 23 ♖xc8 ♖xc8 24 axb4 exf3 25 d6
 ♖d8 26 ♗c5 ♗e8 27 d7 ♗d6♠.

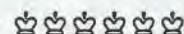
21 ♗xd5
 22 ♖xd5 exf3
 23 ♖cd1 fxg2
 24 ♖xg2 ♗h7♠
 25 ♖c3 f5
 26 ♖e2 ♖f6
 27 ♖f3 ♖d8
 28 ♖f4 ♖fd6
 29 ♗b6 ♗e5



30 ♖c3

Here I noted the right move on my next card, but on my board I placed the white ♖ on b3 and "continued" the game with

30 ♖8d7??
 31 ♖xe5 1 0



The successful Olympiad team from Germany with their Gold medals at the BdF celebrations in Magdeburg, last November. Achim Soltau, team captain, is back left, with (from left to right) Fritz Baumbach, Karl-Heinz Maeder, Heinrich Burger, Hans Palm and Dr. Martin Kreuzer. Seated in Volker-M. Anton.

Bernard Partridge Memorial - Semi-Finals

The top placed 3 players from each Semi-Final will qualify for the Final, which is due to begin soon.

No	Section 1	1	2	3	4	5	6	7	8	9	10	11	Pts
1	H. Starke GER	◆	1	½	1	0	1	1	1	½	1	1	8
2	T. Hartogh GER	0	◆	½	½	½	1	1	½	1	1	1	7
3	T. Christiansen DEN	½	½	◆	½	½	1	1	1	0	1	0	6
4	S. Nordfjörd ISD	0	½	½	◆	1	1	½	½	1	½	1	6½
5	J.M.Poulsen DEN	1	½	½	0	◆	1	1	1	1	½	1	7½
6	J.M. Bussers BEL	0	0	0	0	0	◆	0	0	0	0	1	1
7	CM Fordham-Hall ENG	0	0	0	½	0	1	◆	1	1	½	½	4½
8	U. Huser GER	0	½	0	½	0	0	0	◆	0	0	0	1
9	A. Truvens BEL	½	0	1	0	0	0	0	0	◆	½	1	3
10	W. Lautenbach GER	0	0	0	½	½	1	½	1	½	◆	1	5
11	A. Dromberg SVE	0	0	1	0	0	0	½	1	0	0	◆	2½

No	Section 3	1	2	3	4	5	6	7	8	9	10	11	Pts
1	J. Poell NLD	◆	0	0	0	½	½	½	½	½	½	½	
2	A.K. Pedersen DEN	1	◆	0	1	0	½	1	1	½	0	0	5
3	L. van Damme BEL	1	1	◆	0	½	½	1	1	0	0	½	5½
4	H. Kunz GER	1	0	1	◆	1	0	½	½	½	½	1	6
5	H. Haraldson ISD	½	1	½	0	◆	1	½	½	0	½	0	5
6	K.R. Winkler GER	½	½	½	1	0	◆	0	0	½	0	0	3
7	G. Strömberg DEN	½	0	0	½	½	1	◆	0	½	0	½	3½
8	R. Baatz GER	0	0	½	½	1	1	◆	0	1	0		
9	E.C. Sowden ENG	½	½	1	½	½	½	½	1	◆	0	½	5½
10	M.J. Summers BEL	½	1	1	½	1	1	1	0	1	◆	1	8
11	G. Grothe GER	½	1	½	0	½	1	½	1	½	0	◆	5½

No	Section 2	1	2	3	4	5	6	7	8	9	10	11	12	Pts
1	H. Starke GER	◆	½	1	½	1	1	0	1	½	1	1	1	8½
2	V.B. Andersen DEN	½	◆	1	½	½	1	0	1	1	0	1	1	7½
3	J. Nielsen DEN	0	0	◆	0	½	1	½	1	½	½	1	1	6
4	G. Voss GER	½	½	1	◆	1	1	½	1	1	½	1	1	9
5	E. Vieira BEL	0	½	½	0	◆	1	½	1	½	0	1	1	6
6	A.N. Morris ENG	0	0	0	0	0	◆	0	1	½	½	1	1	4
7	L. van Damme BEL	1	1	½	½	½	1	◆	1	0	½	1	1	8
8	G. Herzing GER	0	0	0	0	0	0	0	◆	0	0	0	0	0
9	J. Frijling NLD	½	0	½	0	½	½	1	1	◆	0	1	1	6
10	R. Woelk GER	0	1	½	½	1	½	½	1	1	◆	1	1	8
11	L. Meeusen LUX	0	0	0	0	0	0	0	1	0	0	◆	1	2
12	D. Mena SVE	0	0	0	0	0	0	0	0	0	0	◆	0	0

No	Section 4	1	2	3	4	5	6	7	8	9	10	11	12	Pts
1	H. Gnirk GER	◆	½	0	0	0	½	½	1	1	1	1		
2	CA v Wieringen NLD	½	◆	0	½	0	0	0	0	0	½	1	1	3½
3	R. Boger NOR	1	1	◆	½	1	½	½	½	1	1	1	1	9
4	J. Harm GER	1	½	½	◆	1	½	1	½	½	½	1	½	7½
5	H.C. Schmidt DEN	1	1	0	0	◆	0	0	½	0	1	1	1	5
6	S. Williams ENG	½	1	½	½	½	◆	1	1	1	1	1		
7	W. Verhaeghe BEL	½	1	½	0	1	0	◆	1	0	1	1		
8	S.M. Jakobsen DEN	1	½	½	1	0	◆	1	0	1	½			
9	J. Kracht GER	0	1	0	½	½	0	0	0	◆	0	1	½	3½
10	T. Lang GER	½	0	½	1	1	1	1	◆	1	1			
11	F. Cottegnie BEL	0	0	0	0	0	0	0	0	0	◆	1	1	
12	V.F. Isaksen DEN	0	0	0	½	0	0	0	½	½	0	0	◆	1½



1st North Sea Team Tournament

Board 1 - Tom Thomson		1	2	3	4	5	6	7	8	9	10	11	Pts
1	Liljedahl E 2200 DEN	◆	½	0	½	½	½	0	1	½	½		
2	Thomson T 2414 SCO	½	◆	½	½	0	½	½	1	½	½	1	5½
3	Söderberg P 2451 SVE	1	½	◆			1	1	0	0		½	
4	Reschke H-J 2469 GER	½	½		◆		½	½	1				
5	van Leeuwen E 2380 BEL	½	1			◆	½	0	½				
6	Karlsson E 2391 ISD	½	½	0	½	½	◆	½	0	0			
7	Frostick C 2466 ENG/A	1	½	0	½	1	½	◆	½	½	½	1	6
8	Barnsley AR 2416 ENG/B	0	0	1	0	½	1	½	◆		½	1	
9	Larsen S-B 2434 NOR	½	½	1			1	½	◆	½			
10	Oomen A 2382 NLD	½	½				½	½	½	◆	½		
11	Gilbert C 2200 FRA		0	½			0	0		½	◆		

Board 4 - Jonathan Lennox		1	2	3	4	5	6	7	8	9	10	11	Pts
1	Somod PB 2329 DEN	◆	0	0	½		0	0		0			
2	Lennox CJ 2200 SCO	1	◆	½			½	0	0	½	½		
3	Johansson K 2271 SVE	1	½	◆	1	1	½	½	½	1			
4	Boensenberg E 2392 GER	½		0	◆	1	0		½				
5	Palmkoeck W 2378 BEL		0	0	◆		½		½	½			
6	Njordfjord S 2200 ISD	1	½			◆	0			1			
7	Coleman PL 2462 ENG/A	1	1	½	1	½	1	◆	½	½	½	1	7½
8	Smith R 2389 ENG/B		½	1			½	◆	½	0			
9	Gullaksen ET 2377 NOR		½	½			½	½	◆	½			
10	Schaper HB 2373 NLD	1	½	0		½	0	½	1	◆	1		
11	Robeson C 2255 FRA		½			½	0			0	◆		

Board 2 - George D. Pyrich		1	2	3	4	5	6	7	8	9	10	11	Pts
1	Lauritsen N 2447 DEN	◆	½	½	½	½	1	1	0	½	1	½	6
2	Pyrich GD 2372 SCO	½	◆	0	½	½	1	½	½	0	½	0	4
3	Blomstrand G 2402 SVE	½	1	◆	½	½	1	½	½	½			
4	Rhode H 2412 GER	½	½	½	◆	½	½	½	½				
5	Dusart P 2379 BEL	½	½	½	½	◆			½	½	1		
6	Elison K 2278 ISD	0	0	0	½		◆	½					
7	Thorn/Lynn JD 2429 ENG/A	0	½	½			½	◆	0		½		
8	Mukherjee A 2430 ENG/B	1	½	½			1	◆	0				
9	Seres F 2494 NOR	½	1	½	½	½		1	◆	½			
10	Vlasweld WM 2405 NLD	0	½	½	½				½	◆	0		
11	Tinture L 2200 FRA	½	1			0	½				1	◆	

Board 5 - Raymond Baxter		1	2	3	4	5	6	7	8	9	10	11	Pts
1	Pedersen HB 2315 DEN	◆	½	½	½	1			0				
2	Baxter RW 2329 SCO	½	◆	½	0			½	0	½	½		
3	Johansson C 2254 SVE	½	½	◆					½	0	½		
4	Podzielnny K 2332 GER	½	1		◆	½			0				
5	Huybrecht F 2298 BEL	0		½	◆			½					
6	Brynjolfsson I 2364 ISD					◆		½					
7	Fraser FJL 2433 ENG/A	½					◆	½	0				
8	Lumley WF 2390 ENG/B	1	1	½	1	½	½	◆	½	1			
9	Andresen T 2398 NOR	½	1				1	0	◆	½			
10	Panaman HJ 2331 NLD		½						½	◆			
11	Longueville T 2200 FRA		½								◆		

Board 3 - Ian Aird		1	2	3	4	5	6	7	8	9	10	11	Pts
1	Hansen TG 2338 DEN	◆	½	½	½	½	1	1		½	½		
2	Aird I 2332 SCO	½	◆	½	1	½	0		½	½			
3	Westlund M 2320 SVE	½	½	◆	1	½	½			½			
4	Skulteti A 2403 GER	½	0	0	◆		0	½	½				
5	De Coninck G 2390 BEL	½	½			◆	0		1	0	½		
6	Kristjansson AH 2200 ISD	0	1	½	1		◆						
7	Toothill JA 2401 ENG/A	0		½	1		◆	½	½				
8	Brockbank HW 2403 ENG/B	½	½	½			½	◆	½				
9	Strand KW 2447 NOR	½				0	½	½	◆				
10	Reijnen MJF 2317 NLD	½	½			1				◆	1		
11	Rozier D 2288 FRA		½	½							0	◆	

Board 6 - Iain Mackintosh		1	2	3	4	5	6	7	8	9	10	11	Pts
1	Norrelykke SGJ 2213 DEN	◆	½	½	0		0	½	½	½	½		
2	Mackintosh I 2295 SCO	½	◆	0			1	0	0	0	0	½	
3	Larsson M 2200 SVE	½	1	◆		½	1	½	1	½	1		
4	Grube F 2200 GER	1			◆		½				½		
5	Poppe M 2339 BEL		½		◆						0		
6	Olafsson TB 2243 ISD	1	0	0			◆	1	0	½	½		
7	Tait JA 2383 ENG/A	½	1	½	½			◆	½	1	1		
8	Donnelly M 2365 ENG/B	½	1				0	½	◆	½		½	
9	Boger R 2463 NOR	½	1	0			1			◆			
10	de Waard JAM 2450 NLD	1	½		1	½	0				◆	½	
11	Lavoiser F 2224 FRA	½	½	0	½	½	0	½	½	0	½	◆	

Chess Suppliers (Scotland)

PO Box 67, 15 Hope Street (1st floor), Glasgow G2 6AQ. Tel/Fax: 0141 248 2887
e-mail: shop@chess-suppliers.co.uk www.chess-suppliers.co.uk

INFORMATOR 77
NEW in CHESS YEARBOOK 55
NEW in CHESS Magazine 3/00

NEW BOOKS

Storming the Barricades = Christiansen 13.99 The Open Ruy Lopez = Flear £14.99
Queens Gambit Declined = Sadler £14.99 Winning Unorthodox Openings = Dunnington £14.99

The long awaited book Kramnik: My life and Games = Kramnik/Damsky £17.99

CHESSBASE MAGAZINE 75 £17.95

Wijk Aan Zee, Karsten Muller, Secrets of Pawn Endings.

Novags top Table top & Portable

Both have Risc 32 MHz processors, superb openings books with IM strength and a plethora of features.

Diamond 2 & Sapphire 2

NEW VIDEOS

Latest recommendations

Morra Gambit Accepted

110 Mins £18.95

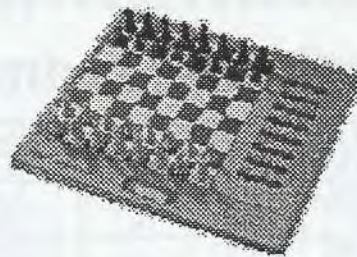
Morra Gambit Declined

105 Mins £18.95

Martin

Both of the above Videos

£32.70!



Chess equipment for Clubs, Schools, Individuals!!
Modern Chess Openings 14th Edition
Nunn's Chess Openings
Concise (a,b,c,d,e) ECO Encyclopaedia
THE chess opening encyclopaedias'

SOFTWARE

All windows 95/98/NT4

Budapest Gambit – Oleinikov £17.95 New

Intensive Course Tactics – Renko £17.95

Contains over 4000 tactical positions categorised in 120-database theme classification.

New

1000 Checkmates – Ftacnik £17.95

Modern Benoni – Hebert £17.95 New

Modern ways of Playing the Sicilian – Rodriguez £17.95

Gambit Lexicon – Bangiev £17.95

All book orders over £25.00 Post Free!!

5% discount to full members of the Scottish Chess Association 5%

5% for Scottish Correspondence Chess Association members 5%



World Cup XII

Organised for ICCF by
Czech CCA

Postal and Email qualifying sections of 11 players (10 games each), multiple entries accepted. Section winners will receive book prizes and will progress to the Semi-Final/Final stages.

Overall winner receives fine trophy and CHF 1600, with runners up receiving CHF 1000 and CHF 500 respectively and medals.

Entries, with fee of £8 per section, specifying preference for postal or Email play, to be sent before 30/6/2000 to:-

Mr. George D. Pyrich,
13 Ardgartan Court,
Balfarg,
Glenrothes,
Fife, KY7 6XB.

Play in all sections is due to start 1/10/2000. See "<http://iccf.com>" website for more detailed information.

ICCF THEMATIC TOURNAMENTS

Sections of 5-7 players, two games against each opponent. Top two players qualify for each Final.

Entries by 1/6/2000, start 15/8/2000

9 Ruy Lopez - Closed Variation, C90-C99
1 e4 e5 2 Nf3 Nc6 3 Bg5 a6 4 Ba4 Nf6
5 0-0 Be7 6 0-0 b5 7 Bb3 d6

Entries by 1/8/2000, start 1/10/2000

10 Latvian Gambit, C40
1 e4 e5 2 Nf3 f5

11 Two Knights Defence, C55-C59
1 e4 e5 2 Nf3 Nc6 3 Bc4 Nf6

Entries by 15/9/2000, start 15/11/2000

12 Göring Gambit, C44
1 e4 e5 2 Nf3 Nc6 3 d4 exd4 4 c3

13 Sicilian Defence, B63
1 e4 c5 2 Nf3 d6 3 d4 cxd4 4 Nxd4 Nf6
5 Nc3 Nc6 6 Bg5 e6 7 Qd2

Entry Fee is £6 per group (payable to Scottish CCA) to :-
Mr. George D. Pyrich,
13 Ardgartan Court,
Balfarg,
Glenrothes,
Fife, KY7 6XB.

Scottish Chess Association

... promoting chess throughout Scotland

Individual membership for 1 year costs only £24.50

Benefits

- * Scottish Chess Magazine 6 issues per year
- * SCA Website: www.users.globalnet.co.uk/~sca/
- * Reduced entry fees at most registered congresses
- * 5% discount on purchases from Chess Suppliers (Scotland) and Chess Direct Ltd
- * SCA Grand Prix
- * Entitlement to enter Scottish Chess Championships
- * Personalised current or previous year grading print-out free on request
- * SCA chess calendar - comprehensive listing of tournaments around Scotland
- * SCA membership card.

New memberships, renewals and enquiries, please contact:

Sam Collins, SCA Customer Services Director,
PO Box 67, 15 Hope Street, Glasgow G2 6AQ,
Tel/Fax 0141-221-6464, Email: sca@btinternet.com

Most major credit and debit cards accepted

ICCF INDIVIDUAL TOURNAMENTS

(by George Pyrich)



Entries received since the beginning of the New Millennium are listed below (Nos. 1 to 7) as well as the one (No. 14) outstanding since last time.

No	Name	Tourney	Class/Players	Tourney	Ref
					of
					Play
14	B. Thompson	World Higher	15	W/H/1003	Corr
1	B. Thompson	World Higher	7	W/H/1005	Corr
2	C. McIntee	World Open	7	W/O/7	Corr
3	C. McIntee	Europe Open	7		Corr
4	A. Macmillen	World Higher	7		Email
5	G. MacDonald	World Open	7		Corr
6	I. Marshall	World Cup	11		Corr
7	A.C. Norris	World Cup	11		Email

Results

Name	Tournament Class	Final Place	Score
W. Hynd	W/II/906	5=	1½/6
G.D. Pyrich	WC21sf13	12=	5/14
M. Dyer	W/II/1331	4	3½/6

Friendly Internationals

[Report by Tom Thomson]



Results reported since the last issue of the Magazine

Scotland (½) v Australia (4½) (Email)

Bd 2 A. Armstrong 0-2 W. Djachenko
 Bd 5 R. Beacon 0-2 D. Merrifield
 Bd 6 A. Dearnley ½-½ J. Kelly

Scotland (12) v Denmark (18)

Bd 10 A. Armstrong ½-1½ J. Madsen
 Bd 11 A.N. Macmillen ½-½ B. Rasmussen
 Bd 12 D.G. McRoberts 1-1 J. Sandahl

Scotland (4) v Hong Kong (0)

Bd 8 A.N. Macmillen 2-0 N. Rickett

Scotland (6½) v Italy (6½)

Bd 3 E. Sowden ½-½ S. Giancarlo

Scotland (18½) v Social CCA (11½) [Match complete]

Bd 13 A. Dearnley 1-0 W. Elliot

Scotland (0) v Vienna (2) (Email)

Bd 1 I. Mackintosh ½-1½ Dr. S. Teichmeister
 Bd 2 K.W.C. Stewart ½-1½ L. Lovaks
 Bd 3 A. Armstrong 1½-½ F. Patocka
 Bd 4 B. Milligan 1-1 G. Hechl

Final Result Table

	Scotland		Social CCA
1	G.D. Pyrich	1-1	J. Vivante-Sowter
2	E. Sowden	1-1	G.E. Wallwork
3	T. Thomson	1½-½	S.H. Hilton
4	K.W.C. Stewart	2-0	M.J. Gifford
5	I. Mackintosh	0-2	F. Foldvary
6	A.N. Macmillen	1-1	G. Rosser
7	D.R. Cumming	2-0	C. Lund-Yates
8	A. Armstrong	2-0	G.J.S. Ross
9	D.G. McRoberts	1-1	J. Watson
10	Mrs. E.A. Hartford	0-2	S. Taylor
11	I. Sneddon	2-0	C. Dowell
12	B. Milligan	2-0	T. Anglim
13	A. Dearnley	2-0	W. Elliot
14	J.R. Milne	1-1	M. Shine
15	G. McCov	0-2	D. Price
	Final Result	18½-11½	



INTERNATIONAL CORRESPONDENCE CHESS FEDERATION

Entry form for Scottish CCA members for ICCF Individual Tournaments

Name _____ Member No. _____ Tel. No. (____) _____

Address _____

Postcode _____ Email address (where applicable) _____

Rating (ICCF, SCCA or OTB) _____ Date entry sent to SCCA _____

Individual Tournaments	Fee	No. of players	World (W) or Europe(E)	Postal (P) or Email (EM)	No of Groups	Amount £
Open Class	£6	7				
Higher Class	£6	7				
Master Class	£8	11				
Master Norm	£15	11				
Thematic *	£6	7	World only	Code:		
World Cup	£8	11	World only			
ICCF Badge	£2	n/a	n/a	n/a	n/a	
Total						£

* See Scottish CCA Magazine for Openings details/codes - Postal only

Please send entries (with cheque payable to the "Scottish Correspondence Chess Association") to:
 Mr. George D. Pyrich, SCCA International Secretary, 13 Ardgartan Court, Balfarg, Glenrothes, Fife, KY7 6XB.



INTERNATIONAL CORRESPONDENCE CHESS FEDERATION INDIVIDUAL TOURNAMENTS

Members of the Scottish CCA are eligible to play in ICCF Postal and Email tournaments. These events are structured to encourage participation by CC players of all standards. Members can choose between World and European promotion tournaments ranging upwards from Open Class, Higher class and Master class. Entries to Higher or Master class tournaments for the first time, require evidence of CC playing strength, if a player has not qualified for promotion from either an Open class or Higher class tournament. The following rating groups are for guidance only and do not preclude entry to a different class with the agreement of the SCCA International Secretary:

- O Class (under 1900),
- H Class (1900-2100)
- M Class (over 2100).

Below Master Class, all promotion tournaments are organised in 7-player sections, with 11 players in M-Class sections. You can play simultaneously at any one level until you win promotion and it is possible to interchange between Postal/Email tournaments, e.g. winning a Postal Open Class could be used to play in an Email Higher Class, etc.

New World Cup tournaments begin every three years. Sections are comprised of 11 players of all strengths. Winners proceed to the Semi-Finals and winners of these qualify for a World Cup Final. The entry fee covers participation in all stages and players may make multiple entries, but only two qualifications to the Semi-Final round are permitted. (The next cycle is due to be announced in Spring 2000).

Openings thematic tournaments are also available and more details of these are published in the SCCA Magazine, Fernschach, Chess Mail and on the ICCF website.

Master Norm tournaments of 11 players are available for strong players, by both airmail and Email. A fixed ICCF rating of 2300 (2000 for ladies) or non-fixed rating of at least 2350 (2050 for ladies) is normally required, or else (for players not rated by ICCF) a current FIDE-rating of at least 2350 (2050 for ladies). Players who have taken a medal place (1 to 3) in a national championship, (or won a national championship for ladies) can also enter. A player can enter only one postal section and one Email section each calendar year. Section winners, who do not reach the norm result, will instead receive a qualification for a World Championship Semi-Final.

For postal play, the International Numeric notation is normally used and full details of this simple system, along with ICCF Rules, are sent to each new entrant along with the receipt for his/her entry fee. The time limit is 30 days for every 10 moves and one exceeding of the time limit is permitted. A period of 30 days' leave is also allowed each calendar year. To speed progress, air mail stickers should be used to Europe as well as elsewhere as the international rate for postcards is not increased by this service.

Please be aware that some patience is required, as a game can take about 3 years against an opponent from a country with a poor postal service, and silent withdrawal is bad etiquette. It is recommended that players use International CC postcards, these being available along with other postal chess supplies, from Chess and Bridge Suppliers (Scotland). It is also permitted to use Email, by mutual agreement with opponents, if this could be beneficial for speeding up slow moving games in postal CC events.

For Email tourneys, PGN notation (algebraic) is recommended and the rate of play is 10 moves in every 40 days. International Email promotion tournaments are structured in the same way as postal tournaments, ranging upwards from Open class to Higher class and Master class. ICCF Email rules are downloadable from the ICCF website.

A point to be borne in mind in deciding how many games to play, is that, compared with postal, the rate of play via Email is much quicker. Therefore, it is better to play fewer Email games simultaneously but, as these will be completed sooner, you can enter new tournaments more frequently!

A prerequisite for entry via the SCCA to all ICCF events is that the player is and continues to be a full member of the SCCA for the duration of the tournament.

We wish you great enjoyment from your overseas games and making new friends either by post or Email!

An entry form for ICCF tournaments is included on page 35 of this magazine.

Web pages to watch!

Information about ICCF events, news and activities are featured on the following WWW sites:-

ICCF

<http://www.iccf.com>

Chess Mail

<http://www.chessmail.com>

The Correspondence Chess Place

<http://www.correspondencechess.com>

This site provides a facility for downloading CC Email and postal games! It also contains the lively TCCMB (message board) where you can read a very diverse range of opinions about CC connected topics!

ICCF OLYMPIAD XII FINAL

Board 1 - David A. Kilgour				1	2	3	4	5	6	7	8	9	10	11	12	Pts
1	Portilho	GF	2430 BRS	◆	½								½			
2	Zapletal	J IM	2525 CZE	½	◆			½					½			
3	Al-Thani	MK IM	2630 QTR			◆			½	½						
4	Vitomskis	J IM	2590 LAT				◆		½			½	½	1	½	
5	Neumann	J IM	2695 GER		½			◆	0			½	½			
6	Maliangkay	RJ GM	2605 NLD			½	½		◆	½	0	½	½			
7	Hamarat	T GM	2595 OST				½	1	½	◆		½		½	½	
8	Andersson	U (GM)	(2635)SVE						1		◆	½				
9	Knobel	R	2545 SWZ				½	½	½	½	½	◆				
10	Kilgour	DA GM	2610 SCO	½	½		½	½	½				◆			
11	Greig	G	2470 CAN				0			½				◆		
12	Normantas	V GM	2625 LIT				½			½						◆

Board 2 - Colin A. McNab				1	2	3	4	5	6	7	8	9	10	11	12	Pts
1	de Cresce	SH IM	2475 BRS	◆		1	½	½								
2	Mráz	M IM	2525 CZE		◆	1		0			1	½			½	
3	Al-Modaikhi	M	2085 QTR	0	0	◆	0	0	0	0	0	0	0	0	0	0
4	Saksis	J IM	2525 LAT	½		1	◆			0		1	½		½	
5	Nimtz	M IM	2605 GER	½	1	1		◆		½	1	1	½	1		
6	Gouw	C-P IM	2460 NLD			1			◆	1		½	1			
7	Neuschmied	S	2540 OST			1	1	½	0	◆	½	1	½	1	½	
8	Carlsson	I	2500 SVE		0	1		0	½	◆	1				½	
9	Rüfenacht	M GM	2555 SWZ		½	1	0	0	½	0	0	◆	½			
10	McNab	CA IM	2505 SCO			1	½	½	0	½		½	◆		½	
11	Deidun Sr.	J	2435 CAN			1			0					◆		
12	Gefenas	V IM	2575 LIT		½	1	½			½	½		½			◆

Board 3 - Philip M. Giulian				1	2	3	4	5	6	7	8	9	10	11	12	Pts
1	Felicio	C IM	2435 BRS	◆				0				½				
2	Sevecek	R IM	2575 CZE		◆	½					½	½			½	
3	Shardarevian	M	2200 QTR		½	◆		0					0	1		
4	Strautins	U IM	2515 LAT				◆	½			½	½			½	
5	Anton	V-M GM	2625 GER	1		1	½	◆	1				1	½		
6	v.d. Plaasche	B	2520 NLD					0	◆	½	½	0	½	0	0	
7	Wohlfahrt	H	2530 OST						½	◆						
8	Johansson	I IM	2530 SVE		½		½	½		◆	0			0		
9	Bhend	E IM	2490 SWZ	½	½		½		1		1	◆	½	½	½	
10	Giulian	PM IM	2445 SCO			1		0	½			½	◆			
11	Demian	E	2390 CAN			0		½	1		1	½		◆	½	
12	Rumiancevas	B GM	2515 LIT		½		½		1			½		½		◆

Board 4 - George D. Pyrich				1	2	3	4	5	6	7	8	9	10	11	12	Pts
1	Joao	N	2485 BRS	◆						0		½				
2	Danek	L IM	2495 CZE		◆		½	½	0				1			
3	Mousa	EAH	2200 QTR			◆	½							1		
4	Dauga	Z IM	2500 LAT		½	½	◆			0			½	1		
5	Kreuzer	M GM	2615 GER					◆	1	1			½			
6	Nienhuis	K IM	2410 NLD		½			0	◆	0	½		½	½		
7	Teichmeister	S IM	2515 OST	1	1		1	0	1	◆		½	½	1		
8	Holmberg	R IM	2560 SVE					½			◆	0	½			0
9	Issler	C IM	2555 SWZ	½					½	1	◆	1	1	1		
10	Pyrich	GD IM	2375 SCO		0		½	½	½	½	½	0	◆	1	½	
11	Cody	PC	2350 CAN			0	0		½	0		0	0	◆	0	
12	Sutkus	R GM	2535 LIT							1	0	½	1			◆

ICCF OLYMPIAD XII FINAL contd

Board 5 - Tom Craig				1	2	3	4	5	6	7	8	9	10	11	12	Pts	
1	Amorim	GS	2430	BRS	◆		½			½	½	½	½	0			
2	Teichmann	C IM	2450	CZE		◆	0	0	½	½	½	½		½	½		
3	Al-Khateeb	A	2505	QTR			◆				½			0			
4	Strautins	V IM	2465	LAT	½	1		◆		½		½	1		½	½	
5	Busemann	S GM	2585	GER		1			◆	1	1	½	½		½		
6	van Perlo	G GM	2440	NLD		½		½	0	◆	½	½	½				
7	Mayr	K IM	2465	OST	½	½			0	½	◆	0	½			0	
8	Hjelm	N	2375	SVE	½	½	½	½	½	½	1	◆	½	1	1	½	7
9	Klügel	J-U	2535	SWZ	½	½		0	½	½	½	½	◆	½	½	½	
10	Craig	TJ	2385	SCO	½							0	½	◆	½	0	
11	Mrugala	A	2335	CAN	1	½	1	½	½			0	½	½	◆	0	
12	Slekys	E	2350	LIT		½		½			1	½	½	1	1	◆	

Board 6 - Joe Watson				1	2	3	4	5	6	7	8	9	10	11	12	Pts	
1	Barata	HAG	2285	BRS	◆		1	½	0		½	½	½				
2	Pribyl	J	2420	CZE		◆	1	0	0	1	0	½	½	1	1	½	
3	Al-Hitmi	MM	2200	QTR	0	0	◆	0	0	0	½	0	½	½	0	0	1½
4	Kazoks	A IM	2415	LAT	½	1	1	◆	½	½	½	½	½	0	1		
5	Maeder	K-H GM	2575	GER	1	1	1	½	◆	1	½	1	1	0	1		
6	Frederiks	R	2505	NLD		0	1	½	0	◆	0	0	0	0		0	
7	Thannhauser	F	2465	OST	½	1	½	½	½	1	◆	½	½	½		½	
8	Andersson	M	2290	SVE	½	½	1	½	0	1	½	◆	½	1		½	
9	Giertz	N IM	2325	SWZ	½	½	½	½	0	1	½	½	◆	0	1	0	5
10	Watson	J IM	2425	SCO		0	½	1	1	1	½	0	1	◆	1	½	
11	Leskowsky	Z IM	2225	CAN	0	0	1	0	0		0		0	0	◆	0	
12	Sutkus	V	2280	LIT		½	1			1	½	½	1	½	1	◆	

Team	1	2	3	4	5	6	7	8	9	10	11	12	P	R	%
1 BRAZIL BRS	◆	½	2	1½	½	0	1	1	2	1	1	0	10½	+44	48
2 CZECH REP CZE	½	◆	2½	½	½	2	½	2½	2	2½	1½	2	17	+32	50
3 QATAR QTR	0	½	◆	½	0	½	1	½	½	½	2	0	6	+34	19
4 LATVIA LAT	1½	2½	2½	◆	1	1½	½	1½	3½	1½	3½	2	21½	+29	58
5 GERMANY GER	2½	3½	3	1	◆	4	3	2½	3	2½	3	0	28	+29	76
6 NETHERLANDS NLD	0	1	2½	1½	0	◆	2½	1½	1½	2½	½	0	13½	+28	36
7 AUSTRIA OST	2	2½	2	2½	2	3½	◆	1	3	1½	3½	1½	25	+24	60
8 SWEDEN SVE	1	1½	2½	1½	½	3½	2	◆	2½	2½	1	1½	20	+28	53
9 SWITZERLAND SWZ	2	2	1½	1½	1	3½	2	3½	◆	2½	3	2	24½	+18	51
10 SCOTLAND SCO	1	½	2½	2½	2½	2½	1½	½	2½	◆	2½	1½	20	+26	50
11 CANADA CAN	1	½	3	½	1	1½	½	1	1	½	◆	½	11	+30	31
12 LITHUANIA LIT	0	2	2	2	0	2	2½	2½	2	2½	3½	◆	21	+34	66



ICCF OLYMPIAD XIII PRELIMINARIES

Board 1 - D.A. Kilgour					1	2	3	4	5	6	7	8	9	10	11	12	13	Pts
1	Dronov	A	2200	RUS	◆						½			1	0	1	0	
2	Camilleri	H	2340	MLT		◆		0	0		0			0	½			
3	Fabri	F	2500	HUN			◆									½		
4	De Mauro	J	2520	USA		1		◆			½		½		1			
5	Mooij	W	2505	NLD		1			◆	½	½	½	½		½	½		
6	Ponelis	A	2315	RSA					½	◆								
7	Krivosovs	V	2475	LAT	½	1		½	½		◆	½		½	½	1		
8	Jovcic	M	2455	YUG					½		½	◆	½					½
9	Lecroq	M	2570	FRA		1		½	½			½	◆	1	½	1	½	
10	Davila	M	2200	URU	0						½		0	◆	½	½	½	
11	Halldorsson	J	2475	ISD	1	1		0	½		½		½	½	◆			½
12	Kilgour	D	2610	SCO	0	½	½		½		0		0	½		◆		½
13	Volchok	A	2605	UKR	1							½	½	½	½	½		◆

Board 2 - A.P. Borwell					1	2	3	4	5	6	7	8	9	10	11	12	13	Pts
1	Makarov	A	2535	RUS	◆					1			½		½	½		1
2	Camilleri	S	2275	MLT		◆			½									
3	Mihalkó	J	2530	HUN			◆				1							
4	Edwards	J	2550	USA				◆	½				½					
5	Plomp	M	2440	NLD		½		½	◆		1		1	½	1	1		
6	Knol	D	2285	RSA	0					◆			½					
7	Batakovs	O	2460	LAT			0		0		◆		0					½
8	Milovanovic	M	2430	YUG	½							◆						
9	Boissel	B	2630	FRA				½	0	½	1		◆	1		1	½	
10	Ruzo	D	2200	URU	½				½				0	◆				½
11	Kárason	A	2460	ISD	½				0						◆	1	0	
12	Borwell	A	2370	SCO					0				0		0	◆		0
13	Kamenets	A	2540	UKR	0						½		½	½	1	1		◆

Board 3 - S.R. Gillam					1	2	3	4	5	6	7	8	9	10	11	12	13	Pts
1	Pinkovetsky	S	2380	RUS	◆		½	½	½					1	½			
2	Vincenti	D	2200	MLT		◆	½				1	½						
3	Janosi	E	2415	HUN	½	½	◆	½	½	1	½		1	1	½			½
4	Kubach	G	2510	USA	½		½	◆	1		1		½			½	½	
5	Pillhock	D	2495	NLD	½		½	0	◆		1			1	½			½
6	Knipe	J	2200	RSA			0			◆			1					0
7	Viksna	T	2470	LAT		0	½	0	0		◆		1	½	0	½	½	
8	Konjevic	D	2470	YUG		½						◆	½					
9	Herb	P	2540	FRA			0	½		0	0	½	◆		0	½		
10	Betancurt	J	2200	URU	0		0		0		½			◆	½			0
11	Pálsson	J	2425	ISD	½		½		½		1		1	½	◆	½	½	
12	Gillam	S	2385	SCO				½		1	½		½		½	◆		
13	Lepikhov	A	2575	UKR			½	½	½		½			1	½			◆

Board 4 - T. Thomson					1	2	3	4	5	6	7	8	9	10	11	12	13	Pts
1	Shemagonov	V	2320	RUS	◆					1			½	½				
2	Sammut	R	2185	MLT		◆		0		1						½		
3	Timár	Z	2425	HUN			◆	½		1	½	½	½		½	½	½	
4	Maillard	B	2470	USA		1	½	◆		1	½							
5	van Egmond	R	2430	NLD					◆		½		0		½	½	0	
6	Terblanche	D	2150	RSA	0	0	0	0		◆	0		0			½		
7	Volaks	B	2465	LAT			½	½	½	1	◆	½			1	½	½	
8	Mirkovic	S	2200	YUG			½			½	◆							
9	Léotard	C	2575	FRA	½		½		1	1			◆		½	½	1	
10	Luzardo	J	2315	URU	½									◆				
11	Vigfússon	V	2395	ISD			½		½		0				◆	0		
12	Thomson	T	2270	SCO		½	½		½	½	½		½		1	◆	½	
13	Kashljuk	V	2520	UKR			½		1		½		½			½		◆

ICCF OLYMPIAD XIII PRELIMINARIES contd

Board 5 - G.R. Sprott				1	2	3	4	5	6	7	8	9	10	11	12	13	Pts
1	Khromov	S	2440 RUS	◆	1				1	½		0	1		1	½	
2	Grillage	A	2200 MLT	0	◆	0	0	½	0	0	0	0	0	0	0	0	½
3	Keszi, J / Soreghy		2430 HUN		1	◆				0		0			0		
4	Timm	J	2535 USA		1		◆	1									
5	Sprenger	E IM	2445 NLD		½		0	◆		0	½	0		½	½		
6	Benade	J T	2200 RSA	0	1				◆	0					0		
7	Gaujens	A	2395 LAT	½	1	1		1	1	◆		0		1	1	1	
8	Somborski	N	2435 YUG		1			½			◆	½					
9	Vinot	S IM	2510 FRA	1	1	1		1		1	½	◆			½		
10	Berrutti	G	2200 URU	0	1								◆		½		
11	Elison	K	2240 ISD		1			½		0				◆	½		
12	Sprott	G R	2285 SCO	0	1	1		½	1	0		½	½	½	◆	1	
13	Kuznetsov	S IM	2505 UKR	½	1					0					0	◆	

Board 6 - D. Neil				1	2	3	4	5	6	7	8	9	10	11	12	13	Pts
1	Lyukmanov	V	2290 RUS	◆			1	½	1		0		1	1			
2	Richards	J	2200 MLT		◆	0		0	1			0	1	0	0		
3	Dobsa	S	2340 HUN		1	◆		0	1	½	½	0	1		0		
4	Fleetwood	D	2495 USA	0			◆	0	1	½		½	1		1		
5	vd Langenberg	C	2475 NLD	½	1	1	1	◆	1	½		½	1	½	1		
6	van Greuning	T	2200 RSA	0	0	0	0	0	◆	0	0	0	0	0	0	0	0
7	Salminš	G	2330 LAT			½	½	½	1	◆		½	1	½			
8	Erdeljan	M	2410 YUG	1		½			1		◆						
9	Spitz	P	2510 FRA		1	1	½	½	1	½		◆	1		0		
10	Ramini	E	2030 URU	0	0	0	0	0	1	0		0	◆	0	0		
11	Gunnaugsson	G	2335 ISD	0	1			½	1	½			1	◆			
12	Neil	D	2200 SCO		1	1	0	0	1			1	1		◆		
13	Terelya	I M	2475 UKR						1							◆	

Section 4 Teams

	Team	1	2	3	4	5	6	7	8	9	10	11	12	13	P	R	%
1	RUSSIA RUS	◆	1	½	1½	1	4	1	½	½	5	2	2	1½	20½	+41	66
2	MALTA MLT	0	◆	½	0	1	2	1	½	0	1	0	1	0	7	+40	22
3	HUNGARY HUN	½	2½	◆	1	½	3	2½	1	1½	2	1	1	1	173	+40	55
4	USA USA	½	3	1	◆	2½	2	2½	0	2	1	1	1½	½	17½	+46	67
5	NETHERLANDS NLD	1	3	1½	1½	◆	1½	3½	1	2	2½	3½	3½	½	25	+29	58
6	SOUTH AFRICA RSA	0	1	0	0	½	◆	0	0	1½	0	0	½	0	3½	+43	12
7	LATVIA LAT	1	2	2½	1½	2½	3	◆	1	1½	2	3	3	2½	25½	+27	57
8	YUGOSLAVIA YUG	1½	1½	1	0	1	1	1	◆	1½	0	0	0	½	9	+57	60
9	FRANCE FRA	1½	3	2½	2	3	2½	2½	1½	◆	3	½	3½	1½	27	+29	63
10	URUGUAY URU	1	1	0	0	½	1	1	0	0	◆	1	1	1	7½	+42	25
11	ICELAND ISD	2	3	1	0	2½	1	2	0	1½	2	◆	2	1	18	+38	53
12	SCOTLAND SCO	0	3	3	½	1½	3½	1	0	2½	2	2	◆	2	21	+30	50
13	UKRAINE UKR	1½	1	1	½	1½	1	1½	½	1½	2	2	2	◆	16	+44	57

Leaders in Sections

Section 1		Section 2		Section 3		Section 4	
Germany	78%	Argentina	68%	Italy	63%	USA	67%
Brazil	73%	Luxembourg	65%	Sweden	63%	Russia	66%
Bulgaria	66%	Israel	64%	Estonia	63%	France	63%
Turkey	66%	England	63%	Slovakia	59%	Yugoslavia	60%
Belarus	63%	Lithuania	61%	Austria	58%	Ukraine	57%
Czech Republic	62%	Poland	58%	Slovenia	55%	Latvia	57%

Top two from each section will qualify, with Final XII medallists, for Olympiad Final XIII.

We cut the cost of your insurance – Not our care and service.

Call us for a quote
and you can be sure of getting a good deal.
Not a raw one!

CGU | **Direct**



Motor Insurance*	FreePhone 0800 121 000
Buildings & Contents*	FreePhone 0800 121 004
Travel Insurance	FreePhone 0800 121 007
Redundancy & Sickness	FreePhone 0800 121 008



Pay by instalments - Interest Free*



Open 7 days a week. *Written details on request. CGU Direct, FREEPOST, 12 Auchingramont Road, Hamilton ML3 1BR.
Calls may be monitored or recorded for your protection. CGU Direct is a trading name of General Accident Fire and Life Assurance Corporation plc
and Commercial Union Assurance Company plc. www.cgu-direct.co.uk

Chess Suppliers (Scotland)

PO Box 67, 15 Hope Street (1st floor), Glasgow G2 6AQ. Tel/Fax: 0141 248 2887
e-mail: shop@chess-suppliers.co.uk www.chess-suppliers.co.uk

INFORMATOR 77

NEW in CHESS YEARBOOK 55

NEW in CHESS Magazine 3/00

NEW BOOKS

Storming the Barricades = Christiansen 13.99 The Open Ruy Lopez = Flear £14.99

Queens Gambit Declined = Sadler £14.99 Winning Unorthodox Openings = Dunnington £14.99

The long awaited book Kramnik: My life and Games = Kramnik/Damsky £17.99

CHESSBASE MAGAZINE 75 £17.95

Wijk Aan Zee, Karsten Muller, Secrets of Pawn Endings.

Novags top Table top & Portable

Both have Risc 32 MHz processors, superb openings books with IM strength and a plethora of features.

Diamond 2 & Sapphire 2

NEW VIDEOS

Latest recommendations

Morra Gambit Accepted

110 Mins £18.95

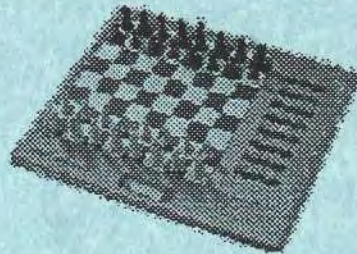
Morra Gambit Declined

105 Mins £18.95

Martin

Both of the above Videos

£32.70!



Chess equipment for Clubs, Schools, Individuals!!
Modern Chess Openings 14th Edition
Nunn's Chess Openings
Concise (a,b,c,d,e) ECO Encyclopaedia
THE chess opening encyclopaedias'

SOFTWARE

All windows 95/98/NT4

Budapest Gambit – Oleinikov £17.95 New Modern Benoni – Hebert £17.95 New

Intensive Course Tactics – Renko £17.95

**Modern ways of Playing the Sicilian –
Rodriguez £17.95**

Contains over 4000 tactical positions categorised in 120-
database theme classification.

New

1000 Checkmates – Ftacnik £17.95

Gambit Lexicon – Bangiev £17.95

All book orders over £25.00 **Post Free!!**

5% discount to full members of the Scottish Chess Association 5%

5% for Scottish Correspondence Chess Association members 5%