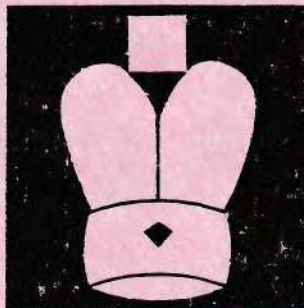


*Scottish
Correspondence
Chess*



- It's the last one - after 21 years!
- Richard Beecham's Champion 100%
- Doug Finnie wins Reg Gillman Memorial "D"
- New SCCA/ICCF Rating List
- Who says computers are spoiling CC?

£3.00

No. 72, Winter 2000/01

chess

Informant is OK ✓

AVAILABLE NOW

Chess Informant volume **79**

Encyclopaedia of Chess Openings volume **C**

4th
EDITION

AVAILABLE SOON

Encyclopaedia of Chess Openings volumes **A and B**

4th
EDITION

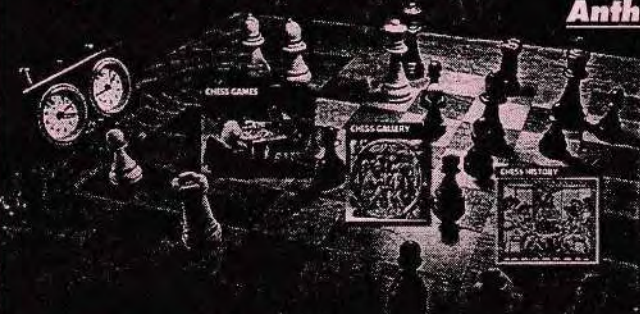
That is not all!

CHESS *is* CHESS

CD
COMPACT DISC

By Grandmaster Aleksandar Matanović

Anthology of chess creativity



Chess Informant
CHESS SCHOOL

CHESS SCHOOL
For beginners

FIDE CHESS RULES

35.000 GAMES

- ◆ 770 best games from the 77 volumes of Chess Informant
- ◆ All the games from the World Champion title matches, Candidate tournaments and matches and interzonals
- ◆ All the games from the 200 greatest tournaments in history
- ◆ Selection of games from the Olympiads
- ◆ Cross tables

FOR PHILATELISTS

700 postage stamps with the chess themes

CHESS GALLERY

- ◆ Chess in art
- ◆ Chess cartoons
- ◆ 500 photographs of leading chess players and their biographies

CHESS HISTORY

From Chaturanga to chess computers

RATING LISTS FROM 1975 TILL TODAY

PLAY CHESS WITH CRAFTY

ON THE INTERNET <http://www.sahovski.com>
www.sahovski.co.yu



Chess Informant

Office-Bearers 2000/2001

President

Iain Mackintosh,
7 Tullylumb Terrace,
Perth, PH1 1BA.
Tel. 01738-623194 or 623777
Email: iainmack@cix.compulink.co.uk

Vice President

George D. Pyrich,
13 Ardgartan Court,
Balfarg,
Glenrothes,
Fife, KY7 6XB.
Tel/Fax 01592-749062
Email: GeorgePyrich@compuserve.com

Secretary

Iain Sneddon,
6 Birkscaim Place,
Bourtrees Hill,
Irvine, Ayrshire, KA11 1ED.
Tel. 01294-214035
Email: iainsneddon@breathe.co.uk

Treasurer

Pat Moir,
5 Cross Street,
Scone,
Perth, PH2 6LR.
Tel. 01738-552681
Email: patrick.moir@virgin.net

Assistant Secretary

Jim Anderson,
162 Fountainbleau Drive,
Dundee, DD4 8BJ.
Tel. 01382-501649
Email: james.anderson3@virgin.net

International Secretary

Tom Thomson,
8 Swallow Crescent,
Buckhaven,
Fife, KY8 1HH.
Tel. 01592-715603
Email: Thomasthompson@btinternet.com

Asst International Secretary

Vacant

Grading Officer

Raymond W.M. Baxter,
63 Orchard Brae Avenue,
Edinburgh, EH4 2UR.
Tel. 0131-332-4607
Email: raymondwm@baxter2.fsnet.co.uk

Publicity & Membership Officer

Bernard Milligan, (& Games Ed)
15 Bothwell Court,
Hawick,
Roxburghshire, TD9 7EP.
Tel/Fax 01450-370507
Email: bernie@milliganb.freemove.co.uk

Magazine Editor

Alan P. Borwell,
8 Wheatfield Avenue,
Inchture,
Perthshire, PH14 9RX.
Tel. 01828-686556
Fax 01828-686004
Email: alanp@borwelliccf.freemove.co.uk

Editorial

by Alan Borwell

No. 72
Winter 2000/01

Well, the time has come to say but I will let Moira do that more eloquently on page 3.

In this final issue, we have included the Editorial from our first News Bulletin No. 1, which makes interesting reading! We also have our President, Iain Mackintosh, advising readers about the arrangements for the future SCCA web magazine. Of course, the SCCA website is already well developed and is receiving very favourable comments from members and visitors around the world - well done, Iain and everyone involved in its creation and development! It is already providing an excellent results service for domestic tournaments and will, in future, cover all international tournaments in which Scotland is participating or represented. Please note new address for website below.

On the playing scene, we have witnessed a most remarkable achievement by one of our oldest (service not age!) members and workers, Richard Beecham, who has won the 2000/01 Scottish Championship with a 100% score - well done, Richard! In the 2001/02 Championship, it is good to see that ex-President David Kilgour is participating, along with our new President and current Champion, in what should be a very competitive and interesting event.

Another fine individual achievement is Doug Finnie's success in winning the Reg Gillman Memorial Group "D" with 11/14pts (see page 39)

Congratulations again to the Five Brave Englishmen for winning the League Championship for the second year in succession - so come on, the Scots, we must do something about this and stop a hat trick! Expect previous champions Kirkcaldy Kings to be trying hard to regain Division 1 status!

Arrangements are now progressing well for the SCCA Magazine 21st Anniversary International Invitation Tournament, which will begin this summer - see website for further information and participants. In international events, Scotland is performing creditably but seems unlikely to win any medals, although the Email team will receive certificates for finishing in 2nd/3rd place in the first Email TT Final - a fine achievement!

The Association's Annual General Meeting will be held a little later than normal, on Sunday 17th June, 4pm, at Chess Suppliers (Scotland) in Glasgow (see notice on page 2) and it is hoped to see a good attendance. It will be preceded by the usual Executive Committee Meeting at 2pm, to which all members are most welcome to attend. No excuses! - please do your best to come along!

INDEX OF CONTENTS

	Pages		Pages
Editorial	1	Grading List 2001	18/20
AGM Notice	2	100 Club	20
SCCA Magazine - The Future	2	Games Section	21/30
SCCA Magazine - The Past!	3	Bernard Partridge Memorial Final	31
SCCA Championships/Candidates	4	1 st North Sea Team Tourney	31
Premiers/Openings/Majors/Minors	5	ICCF Tournaments	32
Quartets	6	Friendly Internationals	33
SCCA Email Tournaments	6	ICCF Entries/Entry Form	33
SCCA League	7	ICCF Thematics	34
Challenge Tournament	8	Email Team Tournament Final	34
Computers spoiling CC?!	9/13	Email Olympiad Preliminaries	35
New Books	14/15	XII Olympiad Final	36/37
ChessBase Review	16	XIII Olympiad Preliminaries	38/39
What have the Romans done?	17	VI European TT Preliminaries	40

Note new SCCA Website addresses:

www.scottishcca.co.uk

www.scottishcca.com

www.scottishcca.org

Typing any of these into your browser will route you to the website, which remains unchanged at its Globalnet address.

SCCA Magazine - The Future

[by Iain Mackintosh]

This edition of the magazine is the last under the editorship of Alan Borwell, ably assisted by his wife Moira. Together, they have set a standard for chess publishing which has been recognised by the wide domestic and international circulation the magazine now enjoys. Their dedication to quality has helped Scotland achieve recognition beyond its size in the international chess community, and they leave office with a very well-earned vote of thanks!

The SCCA is committed to continue their good work, and we also have to take account of changing membership, economic and technology trends. This article sets out our plans to ensure that our readers continue to receive a lively and informed magazine.

Internet

At our AGM in June 2000, we made a policy decision that web-based publishing would be our future direction. Since then, we have demonstrated that all the various magazine contents can be published on our website, and that we can readily archive back levels of results tables, games downloads and feature articles.

In consequence, we will now store all our submitted copy in web-enabled format (for the technically-minded, this means documents in HTML code – prospective authors shouldn't worry overmuch, as most common word processors like MS Word can store documents in this format after you've typed it up in the usual way).

Subscription

Also at the last AGM, we reduced magazine subscription amounts in anticipation of being able to reduce the bulk printing and postage costs we currently experience.

The new ordinary member subscription costs £8, of which £5 is the membership fee, and £3 is the magazine subscription, with quarterly electronic delivery assumed. We feel that this represents excellent value for our members.

Life members who wish the magazine (electronic or paper), ordinary members who wish a paper copy of the magazine, and magazine-only subscribers require to pay an extra £5 magazine subscription per annum.

In order to preserve the rights of paying subscribers, the full magazine will not be publicly available on the website. Results tables, and other current information such as book reviews will be available to all website visitors, but feature articles will only be available to subscribers. The full magazine will ultimately be located on a secure area of the website.

Production & Distribution

Each quarter, the magazine will be compiled from source copy and converted into Adobe Acrobat format, resulting in a document with a pdf suffix. For all subscribers with e-mail addresses, each edition will be mailed to them directly. In order to read or print this document, subscribers will need to install a copy of the Adobe Acrobat Reader software on their computers. This software is freely available on the web, and a link has already been provided on the SCCA website to assist subscribers to download it to their own machines.

Once we establish a secure area on the website, back numbers of the magazine will be available for download to members and subscribers under password control.

Subscribers who wish a printed copy of the magazine will receive this in the usual way. We are discontinuing the current bulk printing arrangement we have, and will use a small commercial provider to print and spine the smaller number of copies now required. The size (and thus the content) of the printed magazine will be determined by its printing and postage costs – we are resolved to use the subscription income to break even at worst, so there will be no subsidy arrangements. Feature articles will be the first priority for printed copies, as other information can be obtained from the website.

Editorial

We are aware that we need to maintain the high standard of contributions to the magazine, and I'm very happy to report that Alan has agreed to help us through his wide network of contributor contacts, as well as penning some articles of his own.

The mechanics of production, plus any editorial comment, will fall my lot for the time being, and I'm looking forward to extending the sequence of issues in the near future.

NOTICE OF ANNUAL GENERAL MEETING

The Annual General Meeting of the Scottish CCA will be held at 4.00pm on Sunday 17th June 2001 at Chess Suppliers (Scotland) Ltd., 15 Hope Street, Glasgow. The Agenda will be:-

- | | | |
|----------------------------|-------------------------------------|---|
| 1. Apologies | 5. Treasurer's Report | 10. Subscriptions |
| 2. President's Remarks | 7. International Secretary's Report | 11. Changes to Constitution
(see proposal below) |
| 3. Minutes of previous AGM | 8. Election of Office-Bearers | 12. Any Other Business |
| 4. Secretary's Report | 9. Election of Auditor | |

If any member wishes to raise any item of business, notification should be in the hands of the Secretary by 11th May 2001.

Proposed amendment/addition to Scottish CCA Constitution:-

- Amend** 3(a) Membership, Life or Annual, for which there shall be appropriate subscription shall be open to any chess player, subject to 3(d) below.
- Add** 3(d) The Secretary may reject any application for membership on behalf of the Association. A rejected applicant shall have the right to appeal to the Executive Committee, whose decision shall be final.

SCCA Magazine - The Past!

For your interest, we reprint the Secretarial Notes written by Val Nye in the very first *News Bulletin* of January 1980.

"Welcome to the first issue of the Association's Magazine! This is a natural development of the Newsletter. All being well we will be able to bring out at least three issues each season, which will give the latest positions in all our Tournaments. George Livie has volunteered to run a Games Column, so that each issue will contain a good selection of games. From time to time, Richard Beecham will give news about International Matches. (In passing, I must remark that there is a huge demand for international play and we are hoping to arrange more matches than originally anticipated.) As Secretary, I can probably manage to string together a few words about this and that

All the Controllers and the members of the Executive Committee will have things to write on matters of importance to the Association. Certainly we can include basic items in the magazine but anything else must come from you, our members! If you feel strongly about anything, write a letter and we will put it in the magazine. If you have any ideas for articles, tell us. We need your support to make a success of the magazine.

The Association itself was the brainchild of Bernard Partridge and he employed what he calls his "personal touch" to get a group of us together to form a steering committee. A Constitution was drawn up and an Executive Committee was established, and within a comparatively short space of time we have produced our own Playing Rules, Scorecard and an International Postcard. Guidelines have been agreed for the award of Scottish Master titles and we have made the first award to triple Scottish Champion, Ken McAlpine.

Sooner or later, we will be recognised by ICCF and Scotland will be able to participate or be represented formally in international team and individual events.

In the meantime, it would be useful to have members' views on the structure of the Championships, whether there is demand for any new Tournaments, under what circumstances should play by telephone be allowed (and under what rules).

The Executive Committee feels happy to have a Championship Final of eleven players, but a curious picture appears however when we look at the Premier and the Major. There are usually more players in the (higher ranking) Premier than in the Major. Also, a typical Premier section is far stronger than a typical Major section. One possible way round this state of affairs is to introduce a Candidate's tournament between the Final and the Premiers.

Is there a demand for another type of tournament - an Openings tourney, for example? On telephone play, one or two may do a lot of travelling because of their work and they could find it useful - on occasion - to make use of the telephone. Should we permit this and what rules should then apply?

I have records of over 300 players who have participated in more recent times in Scottish correspondence events. The number entering each season is gradually increasing Our youngest member is probably Paul Hampton who is under 12. But who is the oldest member? Hart Hamilton (at Stewarton) says he is in the seventies but that he is a mere lad compared to J.W. Vernon (from Stranraer)!

This season we have welcomed some Shetlanders (I should point out that Ken Beer, the team captain who is also in the Premier, has requested that 1st Class mail be used). There does not seem to be any sign, yet, of players from the more isolated parts of the Borders, the Highlands, nor from the Hebrides! Any members with contacts who might be interested in learning about our activities are encouraged to write to me - we will send them a complimentary copy of the magazine.

I must, finally, express our thanks to Alan Borwell for taking on the production of the first few editions of the magazine. This is an added responsibility over and above those he has already as Secretary of the SCA. Any volunteers of assistance or for eventually taking over the editorship will, I am sure, be welcomed by our President."

[Editor: Referring back to the first volumes of the "News Bulletin," I see that Tommy Craig was "Editor" for Nos 9 and 10. However, with his addresses being 'near Morpeth' and in Bristol, I recollect we collaborated with their production! The office-bearers listed in No.1 were Allan Hislop (Assistant Secretary), George Livie (Grading Officer), Richard Beecham (International Secretary) with Ian Campbell and Ken Gordon as other Committee Members, along with Val Nye and myself. The annual membership fee was £1!]

It's "Goodbye" from him and it's "Goodbye" from me!

Here we are with our final edition and I've been given a tiny bit of space .. of course, there is so much I'd like to say, as anyone who knows me can testify!! However, I'll stick to the essentials.

Firstly, I'd like to say a HUGE *thank you* to the many contributors over the years . . . the Livies (father and son!), Richard Beecham, John Hawkes, Douglas Bryson, George Pyrich, Phil Giulian, Bernard Milligan, Tom Craig, Ian Marks, Peter Jack, Tom Thomson; and from further afield, Nikolai Gurtovoi, Ted Greiner, Carlos Almarza-Mato, John Knudsen. There would never have been a magazine without the commitment of these chaps to produce article-upon-article. We had the easy part, putting it into print! [If I've forgotten anyone in the list of names, please don't take it to heart!]

I can hardly believe that 21 years have passed since the first edition and that our "baby" has come of age . . . and ready to leave home! The magazine has been such a big part of our lives for so long that in a way it *does* feel like a child leaving home! But it's time for a change - new ideas, fresh enthusiasm! Take care of her, Iain! [Moiria B.]

SCOTTISH CCA CHAMPIONSHIP 1999/2000

No	Name	1	2	3	4	5	6	7	8	9	10	11	Pts
1	A.N. MACMILLEN	◆	1	0	1	0	½	0	½	0	0	0	3
2	D.R.R. ELLIS	0	◆	½	1	0	1	½	½	0	½	0	4
3	I. MACKINTOSH	1	½	◆	1	½	1	1	1	0	1	½	7½
4	F. TEUNISSE	0	0	0	◆	0	0	0	0	0	0	0	0
5	I.F. REEMAN	1	1	½	1	◆	1	½	1	½	0	½	7
6	A.T. HISLOP	½	0	0	1	0	◆	0	0	0	0	½	2
7	D.R. CUMMING	1	½	0	1	½	1	◆	0	0	0	1	5
8	C.R. BEECHAM	½	½	0	1	0	1	1	◆	0	0	0	4
9	T. THOMSON	1	1	1	1	½	1	1	1	◆	0	1	8½
10	C.J. LENNOX	1	½	0	1	1	1	1	1	1	◆	1	8½
11	B. MILLIGAN	1	1	½	1	½	½	0	1	0	0	◆	5½

Championship Controller:
Alistair Maxwell,
34 Loganswell Gardens,
Deaconsbank,
Glasgow, G46 8HU.
Tel. 0141-620-2115

SCOTTISH CCA CHAMPIONSHIP 2000/2001

[Controller - A. Maxwell]

No	Name	1	2	3	4	5	6	7	8	9	10	11	Pts
1	I.F. REEMAN	◆		½	-	1	½	½	1	0	0	0	
2	I. MACKINTOSH		◆	0	-	1		0	1	0	0	0	
3	D.R. CUMMING	½	1	◆	-	½	0	0		0	0	½	
4	D.R.R. ELLIS	-	-	-	◆	-	-	-	-	-	-	-	decd
5	A.T. HISLOP	0	0	½	-	◆	½	½	½	0	0	½	2½
6	B. MILLIGAN	½		1	-	½	◆		0		0	½	
7	I. SNEDDON	½	1	1	-	½		◆	1		0		
8	A. ARMSTRONG	0	0		-	½	1	0	◆	0	0	0	
9	A.C. BROWN	1	1	1	-	1			1	◆	0	0	
10	C.R. BEECHAM	1	1	1	-	1	1	1	1	1	◆	1	9
11	M. MAY	1	1	½	-	½	½		1	1	0	◆	

Please send games, with annotations, to the SCCA Magazine Games Editor:-
Bernard Milligan,
15 Bothwell Court,
Hawick,
Roxburghshire,
TD9 0BA.

List of Competitors in Scottish CCA Championship 2001/2002

A. Armstrong; C.R. Beecham; Dr. A.C. Brown; D.R. Cumming; M. Jessing;
D. Kilgour; I. Mackintosh; M. May; B. Milligan; I. Reeman; I. Sneddon

CANDIDATES 2000/2001

[Candidates Controller: Richard Beecham, 28 Morris Road, Prestwick, Ayrshire, KA9 2JW, Tel. 01292-476984]

Section A

No		1	2	3	4	5	6	7	Pts
1	A.C. BROWN	◆		½	½		1	1	
2	W.M. COOK		◆	0			1	½	
3	B. GOODWIN	½	1	◆	1	½	½	1	4½
4	D. HARVEY	½		0	◆	½	½		
5	I. SNEDDON			½	½	◆	1	1	
6	B. THOMPSON	0	0	½	½	0	◆	1	2
7	S.M. YOUNG	0	½	0		0	0	◆	

Section B

No		1	2	3	4	5	6	7	Pts
1	I.S. CAMPBELL	◆		½	0	1		0	
2	J. COPLEY		◆	0	½	1		0	
3	D.R. CUMMING	½	1	◆	0	1			
4	D. EDNEY	1	½	1	◆	1	1	1	5½
5	S. HILTON	0	0	0	0	◆	0	0	0
6	G. LLOYD				0	1	◆	½	
7	I. SNEDDON	1	1		0	1	½	◆	

Competitors in Candidates 2001/2001

Section A: J. Copley, D. Cumming, D. Harvey, J. Herries, G. Lloyd, G. McDonald, G. Saxton, B. Thompson

Section B: J. Anderson, D. Edney, D. Harvey, G. Lloyd, A. Macmillen, A. Maxwell, I. Mitchell, S. Young

PREMIER TOURNAMENTS 2000

No	SECTION B	1	2	3	4	5	6	Pts
1	D. CRICHTON	◆	½	1	1	½	1	4
2	M. EDWARDS	½	◆	0	½	0	½	1½
3	S. HILTON	0	1	◆	0	0	0	1
4	A. KNOX	0	½	1	◆	0	0	1½
5	G. LLOYD	½	1	1	1	◆	1	4½
6	G.R. McDONALD	0	½	1	1	0	◆	2½

No	SECTION C	1	2	3	4	5	6	Pts
1	R. BEACON	◆	0	1	1	1	0	3
2	A.G.E. BIRD	1	◆	½	½	1	½	3½
3	C. DOWELL	0	½	◆	½	1	½	2½
4	R. MALCOLMSON	0	½	½	◆	0	½	1½
5	G.A.A. MURPHY	0	0	0	1	◆	½	1½
6	S.M. YOUNG	1	½	½	½	½	◆	3

PREMIER TOURNAMENTS 2001

No	SECTION A	1	2	3	4	5	6	Pts
1	C. McINTEE	◆						
2	R. BEACON		◆					
3	A. KNOX			◆				
4	P. MacKENZIE				◆			
5	R. MALCOLMSON					◆		
6	T.F. McAINSH						◆	

No	SECTION B	1	2	3	4	5	6	Pts
1	S.M. YOUNG	◆						
2	A.R. ANGUS		◆					
3	A.G.E. BIRD			◆				
4	C. DOWELL				◆			
5	J. MORROW					◆		
6	B. HENDERSON						◆	

OPENINGS TOURNAMENTS 2000

No	Section A	1	2	3	4	5	6	Pts
1	J. CASSIDY	◆	00	11	01	00		
2	D. CRICHTON	11	◆	11	00	½½		
3	S. HILTON	00	00	◆	0½	00	00	½
4	R. LOUGHRAN	10	11	1½	◆			
5	A.C.W. ROBSON	11	½½	11		◆		
6	S.M. YOUNG			11			◆	

Opening moves are: 1 e4 c5 2 ♖f3 ♗c6 3 d4 cxd4
4 ♗xd4 g6 (Accelerated Dragon, B34)

Controller for Openings Tournaments 2000

Iain Sneddon,
6 Birkscairn Place,
Bourtreehill,
Irvine,
Ayrshire, KA11 1ED.
Tel. 01294-214035
Email: iainsneddon@breathe.co.uk

MAJORS 2000

No	SECTION A	1	2	3	4	5	Pts
1	R. BEACON	◆	10	11	11	½½	6
2	J. GRANT	01	◆	11	11	00	5
3	C.R. JAMES	00	00	◆	00	00	0
4	T.F. McAINSH	00	00	11	◆	00	2
5	C. McINTEE	½½	11	11	11	◆	7

No	SECTION C	1	2	3	4	Pts
1	J. ARMSTRONG	◆	00	10	00	1
2	R.B. CROSBIE	11	◆	11	½1	5½
3	J.W. KILGOUR	01	00	◆	00	1
4	P. MacKENZIE	11	½0	11	◆	4½

MAJORS 2001

No	SECTION A	1	2	3	4	5	Pts
1	J. CASSIDY	◆					
2	J. GRANT		◆				
3	J.W. KILGOUR			◆			
4	T.F. McAINSH				◆		
5	C. McINTEE					◆	

No	SECTION B	1	2	3	4	5	6	Pts
1	R. BEACON	◆						
2	R. LOUGHRAN		◆					
3	J. ARMSTRONG			◆				
4	A.R. PETRIE				◆			
5	C.R. JAMES					◆		
6	G. KENNEDY						◆	

MINORS 2001 [Controller: Iain Sneddon]

No	SECTION A	1	2	3	4	5	6	Pts
1	J. ARMSTRONG	◆						
2	D.W. COOPE		◆					
3	C. McINTEE			◆				
4	P.J. MOIR				◆			
5	D. ROSS					◆		
6	K. STOTT						◆	

Major/Minor/Quartets/Challenge

Entries can be made at any time to Iain Sneddon. New pairings will be arranged when there are sufficient new players to do so.

QUARTETS 2001

[Controller: Alan Armstrong, 41 Crumhaugh Road, Hawick, Roxburghshire, TD9 0BA]

Due to insufficient qualifiers in 2000, there is no Quartet Final this year - qualifiers from 2000 will automatically be placed in the 2002 Quartet Final.

No	Q208	1	2	3	4	Pts
1	A.G.E. BIRD	◆				
2	A. CAMPBELL		◆			
3	C. McINTEE			◆		
4	D. ROSS				◆	

No	Q209	1	2	3	4	Pts
1	D. BROWN	◆				
2	A. CAMPBELL		◆			
3	D.R. CUMMING			◆		
4	P.J. MOIR				◆	

SCCA E-Mail Tournaments

[Controller : Jim Anderson]

The SCCA E-Mail Tournaments run on a rolling format, with groups being formed by the Controller whenever sufficient players are available. Each group is expected to contain 4 players in the Quartets format, with each playing 2 games, one as White and one as Black against each of the other 3 players.

The Controller will try to arrange groups of approximately equal playing strength whenever possible. Group winners receive certificates and games are eligible for SCCA grading.

The time control is 10 moves in each 60 days. SCCA e-mail rules will apply. You can obtain a copy from the web site or if you only have e-mail (no access to the Web) then e-mail me at <james.anderson3@virgin.net> and I will send you a copy.

Entry is free to all SCCA members, who may play in as many groups as they choose throughout the year. Non-SCCA members (from any country) are allowed to enter one free group. If they would like to play in further groups, then they must become SCCA members (membership form available from website).

If anybody would like more information then please contact me (details are below).

	2000 EM001 (Start 26 June)	1	2	3	4	Pts
1	Hilton, Stephen	◆	-	-	-	w/d
2	Proffitt, Chris	-	◆		0	
3	Boyd, Bill	-		◆		
4	Moir, Pat	-	1		◆	

	2000 EM003 (Start 31 July)	1	2	3	4	Pts
1	Sigurdsson, Johann	◆	-			
2	Hilton, Stephen	-	◆	-	-	w/d
3	Petrie, Allan		-	◆		
4	Anderson, Jim		-		◆	

	2000 EM005 (Start 28 Nov)	1	2	3	4	Pts
1	Clapham, Bob	◆	1			
2	Katz, Carol	0	◆			
3	Claudio, Antonio			◆		
4	Macmillen, Andrew				◆	

	2000 EM007 (Start 28 Nov)	1	2	3	4	Pts
1	Moir, Pat	◆				
2	Tjeltveit, Herbjorn		◆			
3	Bali, Anurag			◆		
4	Petrie, Allan				◆	

	2000 EM009 (Start 12 Feb)	1	2	3	4	Pts
1	Bougoin, Claude	◆				
2	Dion, Michel		◆			
3	Hynd, William			◆		
4	Marshall, Ian				◆	

	2000 EM0011 (Start 12 Feb)	1	2	3	4	Pts
1	Edney, David	◆				
2	Gillibrand, John		◆			
3	Seidler, David			◆		
4	Vaga, Marko				◆	

	2000 EM002 (Start 27 June)	1	2	3	4	Pts
1	Macmillen, Andrew	◆		-		
2	Loughran, Robert		◆	-	1	
3	Hilton, Stephen	-	-	◆	-	w/d
4	Mackenzie, Peter		0	-	◆	

	2000 EM004 (Start 13 Nov)	1	2	3	4	Pts
1	Beacon, Robert	◆				
2	Macmillen, Andrew		◆			
3	Petrie, Allan			◆		
4	Wallace, Bruce				◆	

	2000 EM006 (Start 28 Nov)	1	2	3	4	Pts
1	Loughran, Robert	◆	0 0			
2	Hellmann, Torsten	1 1	◆			
3	Alders, Joop			◆	½½	
4	Boyd, Bill			½½	◆	

	2000 EM008 (Start 12 Feb)	1	2	3	4	Pts
1	Beniston, Paul	◆				
2	Kangasniemi, Jukka		◆			
3	Knox, Arthur			◆		
4	McNab, Callum				◆	

	2000 EM0010 (Start 12 Feb)	1	2	3	4	Pts
1	Hughes, Bernie	◆				
2	Juliano, Ray		◆			
3	Kennedy, Gordon			◆		
4	Liarokapis, Vlassis				◆	

Scottish CCA League 2000

Division 1 [Controller: Peter Jack]

A	KIRKCALDY KINGS			3½
1	T. Thomson	v E1	0 ½	
2	G.D. Pyrich	v D2	1 1	
3	G. Saxton	v C3	0 0	
4	I. Marshall	v B4	0 0	
5	S. Donohoe	v F5	1 0	
B	FIVE BRAVE ENGLISHMEN			8
1	P. Coleman	v D1	1 1	
2	D. Chambers	v C2	½ ½	
3	D. Barnes	v F3	1 1	
4	A. Rawlings	v A4	1 1	
5	A. Robertshaw	v E5	½ ½	
C	PERTHSHIRE CORRESPONDENTS			6
1	A.P. Borwell	v F1	½ ½	
2	I. Mackintosh	v B2	½ ½	
3	Dr. A.C. Brown	v A3	1 1	
4	D. Harvey	v E4	1 ½	
5	I.W.S. Mitchell	v D5	½ 0	
D	SOCIAL CCA			4
1	F. Foldvary	v B1	0 0	
2	R. Baker	v A2	0 0	
3	D. Price	v E3	½ ½	
4	S. Murray	v F4	½ 1	
5	B. Sheppard	v C5	½ 1	
E	BLACK KNIGHT			6
1	G.R. Sprott	v A1	1 ½	
2	G. Phillips	v F2	1 1	
3	I. Reeman	v D3	½ ½	
4	A.T. Hislop	v C4	0 ½	
5	I. Sneddon	v B5	½ ½	
F	BUSMAN'S HOLIDAY			2½
1	G. Lloyd	v C1	½ ½	
2	R. Malcolmson	v E2	0 0	
3	R. Loughran	v B3	0 0	
4	A. Petrie	v D4	½ 0	
5	C.R. James	v A5	0 1	

Division 2 [Controller: Jim Anderson]

A	KINGSTON-UPON THAMES			4
1	Chris Briscoe	v E1	1 1	
2	Nick Grey	v D2	0 0	
3	Jonathan Young	v C3	1 0	
4	John Grant	v B4	0 0	
5	Derek Coope	v F5	½ ½	
B	SOCIAL CCA "B"			5
1	A. Rowland	v D1	½ ½	
2	Stephen Hilton	v C2	½ ½	
3	S Taylor	v F3	½ ½	
4	Geoff Rossed	v A4	1 1	
5	Gavin Ross	v E5	0 0	
C	KNIGHT SAC			2
1	Tom Tait	v F1	0 0	
2	Ian McKechnie	v B2	½ ½	
3	Robert Holland	v A3	0 1	
4	Phil Tait	v E4	0 0	
5	Peter Thomson	v D5	0 0	
D	SUPER KINGS			8
1	Alan Armstrong	v B1	½ ½	
2	Bernard Milligan	v A2	1 1	
3	David Cumming	v E3	1 1	
4	Robert Crosbie	v F4	½ ½	
5	Martin Keen	v C5	1 1	
E	SOCIAL CCA "C"			5
1	R. Ansell	v A1	0 0	
2	Chris Dowell	v F2	½ ½	
3	Mike Gifford	v D3	0 0	
4	B. Tonks	v C4	1 1	
5	G. Asm	v B5	1 1	
F	BRUTAL REALISM			6
1	J.S. Murray	v C1	1 1	
2	A. Thomson	v E2	½ ½	
3	P. Coffield	v B3	½ ½	
4	W. Taylor	v D4	½ ½	
5	P. Lewis	v A5	½ ½	

Scottish CCA League 2001

Division 1 [Controller: Jim Anderson]

A	BLACK KNIGHT		
1	G. Sprott	v E1	
2	G. Phillips	v D2	
3	I Sneddon	v C3	
4	C R Beecham	v B4	
5	A T Hislop	v F5	
B	PERTH CORRESPONDENTS		
1	A P Borwell	v D1	
2	I Mackintosh	v C2	
3	A Brown	v F3	
4	D Harvey	v A4	
5	I Mitchell	v E5	
C	SOCIAL "A"		
1	P Doye	v F1	
2	D Price	v B2	
3	B Sheppard	v A3	
4	S A Murray	v E4	
5	C Dowell	v D5	
D	FIVE BRAVE ENGLISHMEN		
1	D Chambers	v B1	
2	E Sowden	v A2	
3	A Rawlings	v E3	
4	D Barnes	v F4	
5	A Robertshaw	v C5	
E	SUPERKINGS		
1	B Milligan	v A1	
2	D Cumming	v F2	
3	M Keen	v D3	
4	A Armstrong	v C4	
5	R Crosbie	v B5	
F	BRUTAL REALISM		
1	J S Murray	v C1	
2	A Thomson	v E2	
3	P Coffield	v B3	
4	W Taylor	v D4	
5	P Lewis	v A5	

Division 2 [Controller: Iain Sneddon]

A	BUSMAN'S HOLIDAY		
1	G. Lloyd	v E1	
2	R Malcolmson	v D2	
3	R Loughran	v C3	
4	A Petrie	v B4	
5	C R James	v F5	
B	KNIGHTS OF THE BOARD		
1	J Anderson	v D1	
2	J Herries	v C2	
3	J Morrow	v F3	
4	P Moir	v A4	
5	K Stott	v E5	
C	SOCIAL "C"		
1	G Ash	v F1	
2	B Tonks	v B2	
3	G J S Ross	v A3	
4	Mrs R Moore	v E4	
5	A Stacey	v D5	
D	KIRKCALDY KINGS		
1	T Thomson	v B1	
2	G D Pyrich	v A2	
3	G Saxton	v E3	
4	I Marshall	v F4	
5	S Donohoe	v C5	
E	KINGSTON UPON THAMES		
1	C Briscoe	v A1	
2	J Young	v F2	
3	B Collins	v D3	
4	J Grant	v C4	
5	D Coope	v B5	
F	SOCIAL "B"		
1	J Lees	v C1	
2	J Ecelson	v E2	
3	G Rosser	v B3	
4	R Ansell	v D4	
5	M Gifford	v A5	

CHALLENGE TOURNAMENT

[by Bernard Milligan]

As the new season starts, a number of new games have begun. I wish you all well in your games. Once again the Challenge Tournament has proved to be our most popular event with more people entering it than any other single Tournament. That said numbers are still down on last season and this seems to have become a trend over the last few years. We need your help to encourage more people to play.

As a result of reduced entries, Geoff Lloyd didn't manage to get all the opponents he requested at the start of the season. Hopefully he won't have to wait to long for the remainder.

Please remember that in the Challenge Tournament you can be allocated additional opponents at any time, even if you haven't requested them. If you really can't manage further games you have to let me know in advance, and I will take your name out of the pool for new pairings.

A typing error when I sent out the pairings meant I had Tom McAinsh down as Class 4 instead of Class 3. My apologies to both Tom and his opponents for any confusion caused.

Pairings since the Autumn magazine are as follows: -

Class 1

C Almarza-Mato (317) 166, 337, 337,
 R Beacon (155) 264,
 D R Cumming (166) 261,312,317,356,371,386,396,
 J P Jack (L15) 049, 264, 312, 315, 376,
 G Lloyd (264) L15, 049, 315, 371, 396,
 R Loughran (337) 317,
 A R Petrie (315) L15, 108, 264, 356, 376,

Class 2

A Armstrong (049) L15, 108, 264,
 M Ballan (386) 166, 264,
 J T Ellison (396) 166, 264,
 C R James (312) L15, 166,
 R Malcolmson (376) L15, 315, 356,

Class 3

D Brown (370) 317,
 J Cassidy (108) 049, 315, 356,
 D Edney (371) 166, 264,
 T F McAinsh (261) 166, 393,
 J F Rutherford (356) 108, 166, 315, 376,

Class 4

K Stott (393) 261,

Results since the Autumn Magazine are as follows: -

L15	J P Jack	1	0	J T Ellison	396	264	G Lloyd	2	0	J F Rutherford	356
166	D R Cumming	1½	½	R Malcolmson	376	264	G Lloyd	1	0	R Malcolmson	376
264	G Lloyd	2	0	C Almarza-Mato	317	264	G Lloyd	1	1	D R Cumming	166
264	G Lloyd	2	0	V A Proudler	L34	261	T F McAinsh	½	1½	A Knox	260
264	G Lloyd	2	0	C R James	312						

Results of games in all tournaments should be reported to the Tournament Controller immediately on completion of each game. If any of the results shown against your name in this magazine are incorrect, please inform your Tournament Controller.

Major / Minor / Quartets / Challenge

Entries can be made at any time. New pairings will be arranged when there are sufficient new players to do so.

Who says that computers are spoiling correspondence chess?!

[by Alan Borwell]

There has been healthy debate on John Knudsen's *Correspondence Chess Message Board*

(www.correspondencechess.com/bbs/) concerning the impact of computers on CC, with a few contributors suggesting that they will destroy our form of the game.

However, the majority of the more informed opinion, including many leading players, has a different view. It has been suggested by one OTB player, who plays some CC, that using computer generated moves could achieve an IM title, but this contention has not been tested in practice and is generally regarded as rather rash.

I am providing examples from four of my recent games in which my older version of Fritz performed pretty unconvincingly, when I tested the critical game positions for its suggested moves and assessments. I also asked Bernard Milligan to test these positions with his Fritz 6 and its assessments are noted as "FR6".

Of course, there could be stronger computer programs lurking in the cupboards, but the basic failings still seem to exist, i.e. too much evaluation based on piece count, basic structural factor weightings and little evidence of real chess vision, creativity or positional insight. Even in some positions where you would expect the computer's calculating and tactical analysis to be superior, there are some poor assessments. Computers' abilities in endings are also very suspect, except in standard programmable situations, based on standard theory.

However, let's look at these four games. I would not suggest that they are necessarily the best examples or are totally conclusive, but they do provide some food for thought concerning the use

The first one is from the friendly Email match between Scotland and Australia. My partner was the CCLA Email organiser, Roy Lawrence (ICCF rating 2180), who I had the pleasure of meeting in Sydney during a private visit to Australia two years ago.

Scotland v Australia 1999/2000

White: Alan Borwell

Black: Roy Lawrence

Trompovsky Opening A45

1 d4 ♘f6
2 ♕g5

I have tried the Trompovsky several times recently, with reasonable success, but more importantly, it has produced some interesting positions.

2 e6

Not the most challenging response, but favoured by some GMs like Karpov and Michael Adams.

3 e4 h6
4 ♕xf6 ♖xf6
5 ♘c3

Alternatives here are ♘f3 or c3.

5 ♕b4
6 ♖d2 0-0

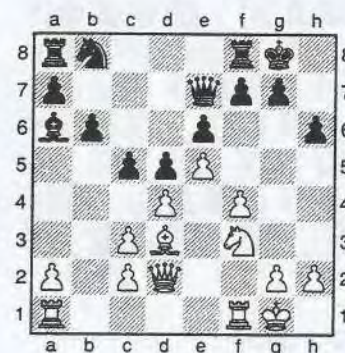
Although this has been played a few times in tournament chess, the more dynamic c5 or flexible d6 are usually preferred.

7 f4!

This move is not favoured by Fritz, but I think it is clearly the best way for White to proceed. (After 5 minutes, reaching a depth of 13/37, this move was not selected in the top six - FR6)

7 ♕xc3
8 bxc3 d5
9 e5 ♖e7
10 ♘f3 b6
11 ♕d3 ♕a6
12 0-0 c5

Developing quite well. My version of Fritz gives this position as slightly better for Black. (After 5 minutes, to a depth of 13/40, this position after 13 f5 or ♖e3 is considered equal - FR6).



13 g4!

(Not considered in Fritz's top 6 candidates - FR6).

13 c4
14 ♕e2 ♘c6?

First choice by my Fritz, but I think the knight would have been better placed on d7 to access the K-side. (After 5 minutes, to level 13/42, top choices for Black are 14 ... ♖h7 or ♕b7 or ♘c6, all evaluated about equal - FR6).

15 f5!

Even with this logical and thematic advance Fritz does not select this in its top 4 - preferring 15 g5?! - FR6.

15 f6
16 ♘h4 ♗fd8?

Better here would have been ♖fe8, giving support on the e-file. Black was probably hoping to advance his d-pawn with this rook on the same file as White's Q.

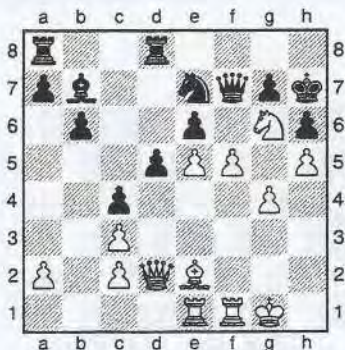
17 ♖g6 ♖f7
18 ♖ae1 fxe5
19 dxe5 ♖h7

If 19...d4, then 20. ♕f3 with ♖g2 and ♕e4 is very strong for White.

20 h4!

My Fritz agrees with this, to support the ♖ in its outpost, but FR6 after 50 minutes to a depth of 14/41 has this move as 5th choice!?

20 ♖b7
21 h5 ♖e7



22 ♖f2!

This is a dual purpose move, preparing to double rooks but also affording some protection to the white King.

22 exf5
23 gxf5 ♖e8?

Better would have been an immediate ♖g8, but White has a winning position and can prepare the decisive pawn thrust with ♖d4/♕g4. (FR6 gives 23 ... ♖g8 24 ♖h2 ♖ad8 25 e6 ♖f6 26 ♖d4 ♖de8 27 ♖xf6 gxf6 28 ♖xe7 about level!) After 23 ... ♖g8 24 ♖ef1 ♖ad8 25 ♖d4 ♖c6 26 ♖h4 d4 27 f6 d3 28 ♕g4 ♖d5 29 ♕f5 gxf6 30 ♖h2 and the discovered check is lethal!

24 f6 ♖g8

My partner actually first played ♖xg6, but he had set up the position wrongly (with my rook still on f1), thinking that after ♖xg6+, I had to move my King. So I offered him an alternative move.

25 fxc7 ♖xg7
26 ♖ef1

Here Roy resigned because there is no answer to the rook entry on f7. Our other game was also very interesting and resulted in a hard fought 49 move draw.

1 0

The second game was played in the friendly Email match between the SCCA and CiF (Chess in Friendship). This time, my partner was good friend Josef Mrkvička (ICCF rating 2442) from Czech Republic, who is the principal organiser for the ICCF World Cup, which began last year, and he has also recently become the ICCF Title Tournaments Commissioner.

Scotland v CiF Friendly Match 2000

White: Josef Mrkvička
Black: Alan Borwell

QP Slav Defence D18

1 d4 d5
2 ♖f3 ♖f6
3 c4 c6
4 ♖c3 dxc4
5 a4 ♕f5
6 e3 e6
7 ♕xc4 ♖b4
8 0-0

It is many years since I have played the Slav Defence but I decided here to defer the popular castling K-side and wait for White to show his intentions.

8 ♖bd7
9 ♖h4 ♕g6
10 ♖b3 a5
11 g3?! ♖c7

Theory, but I think this move is suspect.

11 ♖c7

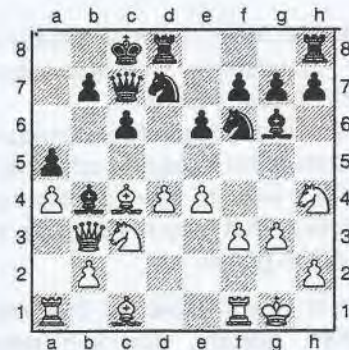
The normal move here is ♖b6 but it does not seem natural to "pin" the bishop on b4 and the queen looks safer on c7.

12 f3

As in Cebalo-Chernin, Poland 1992 but Black then castled K-side. I felt that Q-side castling looked safe and the prospects of K-side activity was quite good - Fritz does not

select 0-0-0 in its top six moves. (When first switched on, this move is fourth choice, but after 5 minutes it does not appear in top 6 moves - FR6).

12 0-0-0
13 e4



The natural move, but Black's response is very challenging!

13 e5!

Now White must choose his next very carefully, as Black's pieces are poised to spring into action before White can complete his development and find a good plan of attack.

14 ♖e2?

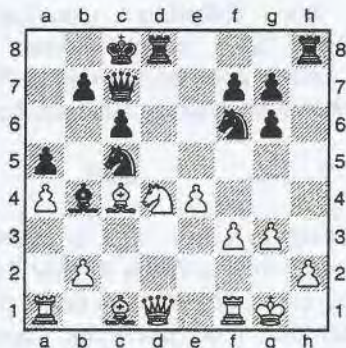
This looks a reasonable move but as the game proceeds it becomes very suspect. Probably, the best choice would be 14.d5 although Black has three plausible moves ♕xc3, ♖b6 or ♖b6+ which all seem to lead to favourable positions. (Chosen by Fritz in testing this position afterwards, but not as being clearly White's best chance of salvation - FR6)

14 exd4
15 ♖xg6?!

This opens up another dangerous file - simple recapture on d4 is best, although after 14.♖xc4 ♖c5 15. ♖e3 ♖d7 defends the f-pawn and threatens to double rooks whilst White's pieces are not well co-ordinated. (Given as about equal by FR6 but clearly is better for Black).

15 hxg6
16 ♖xd4 ♖c5
17 ♖d1

This self-pin is virtually forced as 17. ♖e3 is met with ♖cx4! and after 18.fxe4. ♕c5 is an even worse pin!



17 ♖h5!

Threatens an immediate onslaught on the white King. My Fritz favoured 17 ... ♗d7! with the idea 18 ♕e3 ♜xh2! 19 ♜xh2 ♜h8+ etc – maybe it would have been more dynamic but my choice was aesthetically more pleasing (really saying that I do not use Fritz for generating my moves!)

18 ♕g5

What else?

18 ♖xg3
19 ♜f2

Obviously, the Knight cannot be taken but the h2 pawn needs protection.

19 ♖h5!

The quiet retreat, offering the exchange, but the white black-squared bishop controls the key f4 square.

20 ♕xd8

Better was 20 ♕e3 but Black is winning after 20 ... ♖f4 21 ♜c2 ♖ce6 22 ♕xf4 ♖xf4 23 ♜h1 ♖e6 24 ♕xe6 fxe6 25 ♗g1 ♗e5 26 ♜d1 ♕c5.

20 ♜xd8
21 ♜h1

There is no way for White to undo the pin on the ♗-file – even giving up his rook on d2 would not relieve the pin.

21 ♖f4

Tightening the screw and preparing for a decisive ♗e5 with threats on both d4 and e4. White resigned.

0 1

The third game comes from the Reg Gillman Memorial Tournament, Section E, "Amici Sumus". My partner is the young and very capable Email TO Controller for ICCF, Chris Lüers from Germany. Chris has an impressive rating of 2504 on the most recent ICCF list and is playing very well and improving!

Reg Gillman Memorial, E Section, 2000

White: Alan Borwell
Black: Chris Lüers

QP King's Indian A65

1 c4 g6
2 e4

A useful move order against any Grunfeld exponent!

2 ♕g7
3 d4 c5
4 d5 d6
5 ♕d3 ♖f6
6 ♖c3 0-0
7 h3 e6
8 ♖ge2

This variation has the benefit of secure white piece placements, if Black opens the centre early.

8 exd5
9 cxd5 b6
10 0-0 ♕a6

After White has advanced to d5, the exchange of the white-squared bishops is not a disadvantage and he can already prepare for a quick f-pawn advance facilitated by ♖ge2. A game in Germany in 1998 between Gabriel and Bangiev continued with 10... ♖a6?! but White had a much more active position and won in 32 moves, with a Kingside onslaught.

11 ♕xa6 ♖xa6
12 ♕g5 ♖c7
13 f4 ♗d7
14 ♖g3

We are now following Chabanon – Kinsman, France 1998, but Chris improves on Black's play in that game, which continued with 14 ... ♜fe8 15 ♗f3 h6 16 ♕xf6 ♕xf6 17 e5 dxe5 18 ♖ce4 ♕g7 19 f5!

14 h6!

15 ♕xf6 ♕xf6
16 ♗f3 ♖b5!

Having a move in hand, compared with the Kinsman game, Black's knight is activated more quickly and must be exchanged, but this brings the black Q into action!

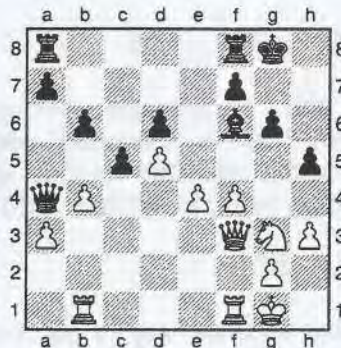
17 ♖xb5 ♗xb5
18 ♜ab1

Now White must play with some caution, before proceeding with his Kingside operations!

18 ♗a4
19 a3 h5?!

Perhaps the key stage of the game – the advance h5/h4 seems attractive; Black probably underestimated the dangers of White's continuation.

20 b4!



20 c4

This is the move which Fritz (the computer one!) suggests, but I think that it cannot be the best and fails to see the K-side danger. Probably a continuation with h4 and ♜fe8 would have given Black better chances? At this stage of the game, Fritz assesses the position as better for Black, but how does it arrive at this evaluation – a passed c-pawn, bishop for knight, active Q etc.? (At depth of 12/31, choice is also 20 ... c4 with equal chances – FR6)

21 e5! dxe5
22 ♖e4!

Fritz still favours Black! (First choice is 22 ♜bc1 with 22 ♖e4 with slightly inferior evaluation – FR6)

22 ♕h8
23 f5 ♗d7

Now Black realises that his Queen will be needed on the other wing, but it may already be too late. Fritz still wants to play on the Q-side! Black hopes to stem the attack by a Q exchange, even at the cost of a pawn, but White's next stops this plan.

24 g4! hxg4?

The ensuing pawn exchanges, simply open up Black's K-side but when White's rooks transfer to the g-file, the outcome will not be in doubt; as suggested by Fritz, but it expects White to recapture with the Queen, which is obviously inferior!

25 hxg4 gxf5

Favoured here is 25 ... b5 - FR6. If Black plays on Q-side, then a quick White transfer of Q and R to h-file looks decisive.

26 gxf5 f6

The only reasonable move, otherwise Black is "skewered" with f6. (Position still rated by Fritz as only slightly better for White - FR6).

27 f2!

The most accurate way to get the rook's across quickly - White K is same on the blocked f-file. With its reputed tactical ability, it is surprising that Fritz is unsure of the best way to conclude the game. (This is the chosen move, but with an infinitesimal advantage - FR6).

27 g7

A renewed Queen excursion to a4, with threats of a few checks would be too late as 27. a4 could be met with, for example, 28. g1+ g7 29. xg7+ xg7 30. g3+ f7 31. g6+ e7 32. g7+ f7 33. d6+ d8 34. xf7 c2+ 35. g3 d3+ 36. h2 e2+ 37. h3 f3+ 38. g3 c6 37. e4 and White wins easily. There could be even better lines for White.

28 d6!

The most accurate move, as Black cannot now move his Queen to a4 as 29. xf6. xf6.30. xa8+ f8. 31. d5+ f7 32. xc4 will soon win. An alternative for White was 28. g1 but 28 ... f7 (or maybe even c3) is not absolutely clear. Black now resigned. The most likely finish would be 28.... ac8 29. g1 c3 30. g6.c2 31. b3+! f7.and with both defenders pinned, the white knight makes the decisive entry with 32. xf6+

The final game is again from the Reg Gillman event where my partner was my ICCF Treasurer colleague and very good friend Carlos Flores (ICCF 2394) from Seville.

Reg Gillman Memorial, E Section, 2000

White: Alan Borwell
Black: Carlos Flores

Sicilian - Grand Prix Attack B23

1 e4 c5
2 f3 c6
3 f4

This move order for playing the Grand Prix Attack avoids the possibility of 2. f4 d5.

3 e6
4 f3 d5

Well, with the French set-up, it had to come anyway!

5 b5 ge7

The main alternative to f6.

6 e2

Castles here is more usual but with this move, White wishes to avoid taking on d5 to keep options open and the d1 square is now available for the QN

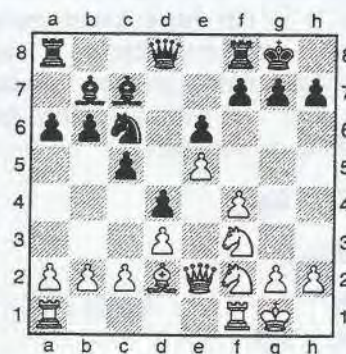
6 d4
7 d1 a6
8 xc6+ xc6
9 d3

We are following Lau-Zahn, Germany 1989, which is used in Gary Lane's book on the Grand Prix Attack to demonstrate this variation.

9 d6

According to Lane, this is inferior because it invites White to play f2, e5 and e4. Somehow, I doubt this opinion and I do not think Carlos agreed with it either!

10 f2 b6
11 0-0 b7
12 d2 c7
13 e5 0-0



14 g5!?

Beginning a tactical manoeuvre which has some risks.

14 e7
15 h5 h6
16 fe4

My version of Fritz would now like to play d5, which loses and the fine move chosen by Carlos did not feature in its top 5 choices!

16 e8!!

Of course, after 16... d5, 17. f6+ gxf6 18 e4 wins! Maybe if I left Fritz "cooking" for longer it would have found this simple 2-move continuation, but it tells us something about why to be careful with them! Also favoured by my Fritz was 16 ... d7 but I think White can continue 17 f3 with good attacking chances, with Queens on the board, e.g. 17 ... d5 18 h3 f6 19 g6 hxg5 20 f5 e4 21 xf4 gxf4!! 22 h7 d h5 wins. (16 ... e8 was chosen as second choice to 16 ... f5 by FR6)

17 g4

White is now "committed" to attack, so this seemed the most aggressive idea, however, it does not work well!

17 ♖xe4
18 ♗xe4 f5!

The real point of Black's excellent 16th move, after the exchange of Queen's. It is Black which has the advantage.

19 ♖xe8 ♖axe8
20 gxf5 exf5!

White's passed e-pawn is not enough compensation for loss of the e4 square or the pawns being fixed on the same colour as the bishop.

21 ♗g3 ♗d5

Ugh!

22 ♖ae1 ♗g5!

Obviously thematic, but also good.

23 ♗h5

My Fritz "thinks" (can it!?) that this position is about equal - don't believe it! (23 ... ♗f7 is given as better for Black -1.00 by FR6)

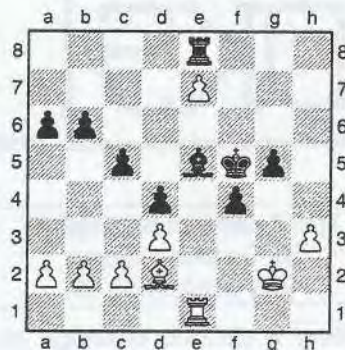
23 ♗f7
24 fxg5 ♗g6!

Nicely played, now a pawn is lost.

25 ♗f6 ♗xf6
26 exf6 hxg5
27 ♖e7 ♖xe7
28 fxe7 ♖e8
29 ♖e1

Here I expected the more obvious ♗f6, but this is also very good.

29 f4
30 ♗g2 ♗f5
31 h3 ♖e5!



Neat, capturing the pawn without decentralising his King!

32 ♗f3

According to Fritz's assessment, I should probably have resigned about this point but, of course, it does not have my "vision" or experience! I have had this kind of ending before and realised that bishops cannot change the colours of the squares on which they roam! (White is losing by -2.28 according to FR6)

32 ♖xe7
33 ♖h1 b5
34 b3

Of course, put it on a white square and try to keep the Q-side closed.

34 ♖h7
35 ♗g2

Setting a trap - and so is Black!

35 ♖h8
36 ♗f3!



Who is bluffing now!? Well how does Black break through unless he plays his next move.

However, it must be better here to try to change the point of attack to e-file or the Q-side. Of course, my silly Fritz only sees the tactic! (Considered are Q-side moves, with 36 ... b4 or 36 ... c4 featuring by FR6 but how does Black win if White keeps the position closed?)

36 ♖xh3+?!
37 ♖xh3 g4+
38 ♗g2 gxh3+
39 ♗xh3

Wonderful, says Fritz, winning easily with at least a 1.5 plus! (Black is winning with -2.31 according to FR6 . . . but humans know better in such endgames!)

39 f3

What else?!

40 ♖e1!

OK then, how does Black win now!?

40 c4
41 bxc4 bxc4
42 ♖g3

Here I offered Carlos the draw, which he accepted.

Of course, if Black plays 42...f2, then 43. ♖xf2 ♗f4 44. ♖g3+ and he must go back and White could even win!

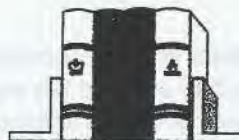
One possible continuation would be 42...♖f4 43.♖f2 ♖e3 44.♖h4 f2 (our robotic friend suggests 44 ... cxd3 45 cxd5 ♗f4 46 ♖g3+ ♗g5 47 ♖e5 ♗f5 48 ♖g3 ♗g6 49 ♖e5 -1.63, but getting nowhere - FR6) 45.♗g2 ♗g4 46.♖f2 ♖xf2 47.♗xf2 cxd3 48.cxd3 ♗f4 when, rather amusingly, White's rook pawn has its first move choice to keep the "opposition"!

Another rather amusing finale could be 42.cxd3, 43. cxd3 a5, 44.a4 ♗f4, 45. ♖g5+. ♗x♖ stalemate!

So much for the "clever" computers - I wish I had more time to play our beautiful creative game - long live correspondence chess for humans!

NEW BOOKS

reviewed by Alan Borwell



Gambit Publications Limited

**Queen's Gambit &
Catalan for Black**
by Lasha Janjgava
192 pages, £14.99

This is a first book by the Latvian GM from Georgia, which provides a refreshing coverage of responses by Black to 1 d4.

The author demonstrates the potential of a solid classical approach designed initially to neutralise White's initiative and then play for a win.

Most of the book is devoted to all main lines of the QGD but it also covers the Catalan Opening (4 g3 etc) and provides ideas for Black to counter this hypermodern treatment.

Ideal for correspondence chess players, because it provides detailed analysis of variations, with nearly 30 pages devoted to the Classical QGD (with ... Nbd7) and even more to the Tartakower (7 ... b6) which has been popularised by many modern GMs.

Recommended for CC players.

Test your Chess
by Steffen Pedersen
160 pages, £13.99

The first part of this book contains opening exercises to test your ability to develop harmoniously and find creative solutions. This is followed by a middle-game section, assessing proficiency for decision-making relating to attack and defence and for finding the best plan. The third section of the first part is devoted to endgame challenges.

The second half of the book is comprised of "How Good is your Chess" exercises, where you are invited to follow one side through a complete game, selecting each move as if you are playing the game. Points are awarded according to the assessor's evaluation of your decisions, with a ranking of standards.

The Symmetrical English
by Carsten Hansen
256 pages, £15.99

Providing a detailed coverage of all lines stemming from 1 c4 c5, the book includes many variations arising from entirely different openings such as Semi-Tarrasch or where White avoids a Benko or Benoni.

There is a discussion of the Hedgehog, which the book suggests is a workhorse of many OTB tournament players, where Black is able to play for a win without taking undue risks.

Although the author recognises that many lines are regarded as being boring and uninteresting, he suggests that there is plenty of scope to liven a game up, if one is familiar with the subtleties.

These kinds of opening do not appeal to me for modern CC play as they tend to be rather predictable, but that is only a matter of personal choice and others could find this book useful.

The Seven Deadly Chess Sins
by Jonathan Rowson
208 pages, £16.99

This is the second book from the most recent Scottish GM and it is thought-provoking and interesting.

It focuses on the main reasons why chess players go "horribly astray" and identifies underlying psycho-logical pitfalls, covering erroneous *Thinking*, missed opportunities *Blinking*, concerns for result *Wanting*, *Materialism*, *Egoism* (too much pursuit of own ideas), *Perfectionism* (time trouble etc) and *Looseness* (losing track or poor concentration, etc.) Do I detect some "Motwani-ism"?

Of course, some of these pitfalls exist in correspondence chess, along with a few others, e.g. clerical errors.

For a chess book, there is an unusual amount of text and it would make a good read whilst travelling or on holiday!

**Understanding Chess
Move by Move**
by John Nunn
240 pages, £14.99

Using 30 selected games, John Nunn describes the thinking for virtually every move in simple English. The emphasis is on principles behind the moves, using thematic grouping of games, by openings, middle-game types and endings.

John Nunn's comments are always worth reading and are instructive. Again, a nice book for the regular traveller!

EVERYMAN CHESS

Modern Benoni
by Andrew Kinsman
143 pages, £14.99

Another book covering this dynamic response to 1 d4. The author, an expert on this defence, explains the latest theory and important thematic ideas.

He uses 63 complete games, although not many are from recent tournaments. However, updated analysis can be found in the notes.

In my opinion, for its price, this book is rather superficial and would need the support of a comprehensive and current database, to be useful for CC players. Earlier books on the Modern Benoni would serve that purpose.

The Magic of Mikhail Tal
by Joe Gallagher
224 pages, £16.99

Joe Gallagher takes a fresh look at the wonderful games and career of one of the finest chess players in the history of the game. Until his premature death, Mikhail Tal entertained us with his dazzling and creative games and the 34 selected for this book are superb. The commentary provided by the author is also excellent and informative.

EVERYMAN CHESS

**The Brain Games
World Chess Championship**
by Raymond Keene
128 pages, £9.99

Quite naturally the author, who was intimately involved in arranging this match, has lauded it as the for the "World Chess Championship." It starts with a letter from Tony Blair, and then various other Brain Games promotional material and a list of officials etc, plus a history of World Championships of the past - obviously all prepared in advance of the match to speed up publication of the book.

On reaching page 42, we find the start of the actual games from the match in which Kramnik defeated Kasparov.

The coverage of the games is disappointingly superficial, giving the impression that haste to publish was much more important than producing a quality coverage of the games from the match.

Not one of Everyman's best efforts.

Batsford Books

Kasparov v Kramnik
by Nigel Davies and Andrew Martin
128 pages, £9.99

A somewhat better effort to give a more balanced commentary on the build-up and coverage of the games.

It had been predicted that this would be a tough match, but one is left with the distinct feeling of disappointment about the quality and interest of the games - perhaps not worthy of the claimed title of World Champion? This will only be acceptable to the chess world at large when a unification match is held between the official FIDE World Champion, Vishy Anand, and Vladimir Kramnik. Of course, Kasparov is not finished but, at nearly 40 years of age, his era must be nearing its conclusion, unless he is really superhuman!!

Let us all hope that FIDE will initiate some better arrangements for determining future World Championships so that the whole OTB chess world will recognise it for deciding true World Chess Champions.

How to Play the Middle Game in Chess

by John Littlewood
176 pages, £14.99

It is good to see another book by my old colleague John Littlewood, who I played with in the Yorkshire county teams of the 1950s/1960s.

The first edition of this book was widely acclaimed as being one of the most useful guides to the middle game ever produced, and rightly so.

John has now updated it, to include new material from contemporary tournaments and take this classic work forwards into the 21st century.

It contains over 300 instructive and interesting examples, on which the author offers a wealth of general advice, with specific hints at the end of each chapter.

Correspondence chess players, nowadays in particular, need to look for imaginative and creative ideas, as the likelihood of winning games by opponent error has been minimised.

I remember John (and his talented brother Norman) as very creative and attacking players and this is exemplified in this excellent new book.

Highly recommended for CC players.

Chess on the Web
by Sarah Hirst, Richard Palliser
and Graham Brown
176 pages, £9.99

The authors are described as "an experienced chess journalist, a young FIDE master from England and someone who is a feature writer with Internet Monthly Magazine!"

The people referred to in "Webmaster Hall of Fame" are Mig Greengard, Mark Crowther, Dave Regis, Danny Sleator, Hanon Russell, Mark Orr, Chris White and John Saunders. However, under "Miscellaneous," we do find a very extensive and interesting interview with John Knudsen of the Correspondence Chess Place!

Not unnaturally, with such authors, the game of CC, either by post or Email, is not given very good coverage. In fact, without a proper index it is difficult to find relevant information. There is mention under "Where to Play" of ICCF, IECC and IECG, but none get much space. Even Chess Mail only gets a small section and much of that is about Tim Harding's father's exploits in World War II.

CHESS INFORMANT

Chess Informant 79
VI-IX 2000
376 pages, £

The usual high quality production covering top level games, many with theoretical novelties played over the four-month period (June-September 2000).

This edition has 569 games, many with detailed figurine annotations assembled under Informant opening references, with excellent player and tournament indices. There are 27 interesting positions at the end of the book, challenging the reader to find the combination, and 18 endgames to "find the finale."

Almost as if being pre-meditated, there is a final section which covers the best games of Viswanathan Anand, included in editions 51 to 76 inclusive (35 superb games). An inspired section, before Vishy won the FIDE World Chess Championship!

**Encyclopaedia of Chess Openings
B and C (Edition 4)**
covering 1 e4 e6 1 e4 e5
568 pages £

A completely updated edition covering all main lines and sub-variations for the French Defence and King's Pawn openings where Black responds with 1 ... e5.

The Informant references are from C00-C19 French then C20-C29 1 e4 e5 all moves except 3 Nf3 or f4; C30-C39 King's Gambit; C40-C49 with 2 Nf3 but not 3 Nc4 or Bb5; C50-C59 with 3 Bc4 and finally C60-C99 with Ruy Lopez 3 Bb5.

An absolute necessity for all serious CC players as an updated reference base for sound opening play, along with current database access for new theoretical ideas and improvements.



ChessBase (Part 7) : A review by Bernard Milligan

There have been a lot of new ChessBase products since my last review in Magazine 70. The flagship of those has to be ChessBase 8, which was released just too late for inclusion in the last issue.

I have spoken to a few people who bought CB8 and all seem to be impressed with the improvements. When I first got my hands on it, I was a bit dubious. It looked great but I had some slight difficulty in working out how to do things. This wasn't really anything to do with CB8 but was simply because I was so used to using CB7. All new products take a bit of getting used to, and although I would still be happy to use CB7, I much prefer CB8.

This article is much too short to cover all the improvements but you will be able to get greater detail at our website.

So what are some of the things I like? Well the first has to be the improved Internet functionality. I can have a game opened at a particular position and CB8 will do a search online, at ChessBase's site, to find games that have reached that position. Now, if I want to send a friend a copy of a game I simply right click on that game in the games list and select the option Output and then E-mail. My E-mail software is automatically launched with a file attachment of the game already there. I type in my message, select who I'm sending it to, and simply send. Now if everyone will please buy CB8, they can send me games for the Games Column by E-mail and I can open them with CB8 straightaway, rather than have to input them move-by-move.

The front-end interface has been changed along the lines of how Fritz 6 looks. You can even change the position of the board and other panes to set it up to your own preferences. Panes are re-sizeable as well. A new addition is the inclusion of a mini board beside the analysis engine window to allow you to play through the currently calculated best line. The main game board can also be changed to a 3D display for those who don't like looking at diagrams.

Of course you will be saying that all this is fine, but it's a database program, so how good is it at doing its job? Well, for one thing, it is much easier to use since the front end has been totally redesigned in a windows format. Multiple windows can be open at the same time so that you can open more than one game at a time and they appear in different windows, which you can switch between by selecting the appropriate window on the task bar.

The speed of the search facility also seems to have been greatly improved which is a major plus when you are dealing with 1 million plus databases like me. In fact, CB8 uses a TurboCache to store the reference database on the first search. This means that second or subsequent searches in that database are even faster. ChessBase have also improved the Double Check (duplicate games) and Integrity checks, so it is even easier to maintain your databases and keep them error free. This is a must if you are downloading games from the Internet to build your own databases.

All in all CB8 is very impressive and it is a lot cheaper than CB7 was when it first came out. At around about £100, it is well within the reach of a lot of players.

So what else is new from ChessBase? Well Bigbase 2001 and Megabase 2001 are both available for those who are looking for top quality databases. Megabase now has 1.7 million games and 40,000 of those contain commentary from top players.

Specialist openings CD's include the **Classical Sicilian** (1.e4 c5 2.Nf3 d6 3.d4 cxd4 4.Nxd4 Nf6 5.Nc3 Nc6) by Anthony Kosten. This English GM has done a remarkable job in keeping this training CD simple, and this greatly benefits the student who uses it. The database only uses 913 samples but these are linked to 27 detailed texts to guide you through the ideas involved. There are also 25 test games with training questions to check how well you're doing and a 8000 game database, should you want to see how the opening has been played in practice.

The **Accelerated Dragon** (1.e4 c5 2.Nf3 Nc6 3.d4 cxd4 4.Nxd4 g6) by Claudio Minzer and Gustavo Albarran. This training CD takes a slightly different approach and is divided into three parts. The first, as you would expect, deals with Opening theory and is split into 15 parts containing the relevant games. Part two deals with the middle-game and concentrates on the strategic ideas of the opening. Part three contains 20 games and training questions. Once again, there are over 8000 games in the database.

The **Basic Principles of Chess Strategy** Vol. III by Professor Alexey Bartashnikov completes what has been a first class set of CDs from this author. Basically he uses 74 extensively annotated games to take the student from the middle-game to the endgame. Such things as how to exchange correctly, positional sacrifices, manoeuvring in equal positions and fighting for the initiative are taught. The endgame phase explains the roles of the pawns and the importance of King activity in the endgame. If you manage all that, or even if you don't, you can enjoy testing yourself against the clock in ten test games.

On the chess playing program side of things, Deep Fritz and Nimzo 8 are both now available and either one is going to prove extremely challenging for even strong players.

Deep Fritz runs very happily on your standard PC but is capable of using up to 8 processors. For example it runs about 80% faster on a dual processor machine. The engine has been improved compared to Fritz 6 to give it better positional understanding and better endgame knowledge. Its opening book has also been revised and extended.

The playing strength of Nimzo 8 has been improved by about 50 Elo pts compared to the previous version. Nimzo has the advantage of keeping its Tablebases in memory for search access at all times. The Opening book has been extended to include latest theory.

What have the Romans ever done for us?

[by Peter Jack]

Before this august publication vanishes into cyberspace, I felt this would be an appropriate occasion to ask the above question, but specifically in relation to what Scotland has ever done for the world of correspondence chess, apart from giving it the SCCA. As every schoolboy, and indeed schoolgirl, knows, the answer is the Scotch Game. The opening was mentioned briefly by del Rio in his *Sopra il giuoco degli Scacchi, Osservazioni pratiche d'anonimo Autore Modenese* of 1750. What put the opening on the map was a correspondence match between Edinburgh and London which started on 23rd April 1824 and ended in 1828 in a victory for Edinburgh, won 2, lost 2, drawn 2.

Botterill and Harding remark that one might think that "...since the opening is called 'the Scotch Game' it was the Scots who were the first to bring the new weapon into play." However, Murray in his *History of Chess* of 1913 informs us "The Edinburgh players began with a Bishop's Opening in true Philidorean style; the London players began - probably at Cochrane's suggestion - with an opening from del Rio, at that time little known, which showed the advantage to the attack of an open Queen's file. In two of the later games, Edinburgh adopted the same opening and their success with it led to the name of the 'Scotch Game' being given to it."

In modern times, it has been adopted by no less a player than Kasparov who thinks it is one of the few viable alternatives to the Spanish.

As we stand on that thin dividing line between the old and the new, I can think of few things more fitting to fill the final pages of the last old-style SCCA magazine than one of Edinburgh's wins.

Correspondence chess 1824-26

White: Edinburgh

Black: London

Scotch Game C45

1	e4	e5	21	bx c4	♙xc3	41	♚g4	h5+
2	♗f3	♗c6	22	♖b1	b6	42	♚f3	♖hf2+
3	d4	♗xd4	23	♖d1	♖ae8	43	♚e4	g6
4	♗xd4	exd4	24	♖b3	♙a5	44	♖c7+	♚g8
5	♙xd4	♗e7	25	f3	f5	45	♚e5	♖c5+
6	♙c4	♗c6	26	exf5	♖e2	46	♚f6	♖xf5+
7	♙d5	♙f6	27	g4	♖xc2	47	♚xg6	♖f8
8	♗c3	♙b4	28	♙f4	♖xc4	48	♖g7+	♚h8
9	♙d2	d6	29	♙xd6	♖e8	49	♚h6	♙b4
10	♙b5	♙d7	30	♖a3	h7	50	♖e6	♖f5
11	♙c4	♙c5	31	♙c7	♖e7	51	♖h7+	♚g8
12	0-0	0-0	32	♖d8+	♚h7	52	♖g6+	♚f8
13	♙d3	♗e5	33	♖c8	♖c1+	53	♖xc6	♖c4
14	♙g3	♙xb5	34	♚h2	♖ee8	54	♖f6+	♚e8
15	♗xb5	c6	35	♚h3	♖h1+	55	g6	♖c3
16	♗c3	♗c4	36	♙h2	♙c3	56	g4	♙f8+
17	♙g5	♙g6	37	f4	♙d2	57	♖xf8	♚xf8
18	b3	f7	38	g3	♙a5	58	g7+	♚f7
19	♙c1	♙xg3	39	♖e3	♖c2	59	♖h8	♖c6+
20	hxg3	♙d4	40	g5	♖hxh2+	60	♚h7	Resigns

Grading List 2001

[by Raymond Baxter]

The grading list follows the same pattern as last year. Two grades are shown for those players with provisional ICCF grades (i.e. grades based on less than 30 results). If you meet a player with two grades, the one that is based on the greater number of results will be used in the calculation of your SCCA grade.

The ICCF grades are those that came into force on 1 October 2000. As well as international matches and ICCF tournaments, the following Scottish events are used in the ICCF grading: Championship, Candidates, and Division 1 of the League. Twelve results are needed for an ICCF grade to be published.

The SCCA grades shown in this list take account of all results reported to the grading officer by 31 December 2000. The new grades will be used for games starting in 2001. All SCCA events listed in the magazine are included, except the Openings tournament. Friendly internationals are also included if the opponent's grade is known. Grades are calculated for players who have had eight or more results, provided these results were against graded players, or against ungraded players for whom it has been possible to estimate a grade.

The following members were active in 2000, but have not yet accumulated the required eight results, and therefore have no grades, J Owens and JK Stoneman.

Four years ago the SCCA grades were increased by up to 200 points to make them more consistent with the ICCF grades. This means that for those who play both correspondence and over-the-board chess, their correspondence grades may well be substantially higher than their over-the-board grades.

A provisional grade (i.e. one based on less than 30 results) is marked with an asterisk.

If your name is shown incorrectly, or if you are doubtful whether your grade or the number of results is accurate, please let me know.

No	Name	SCCA Results/Grade	ICCF Results/Grade	No	Name	Results/Grade	Results/Grade
					PJ Coffield	68 2020	
004	I Aird		46 2354	LM85	S Collins	21 1840*	
317	C Almarza-Mato		138 2007	331	JI Coltart	24 1690*	
LM18	GM Anderson		56 2167	173	WM Cook	55 2050	17 2081*
121	J Anderson	84 1960	12 1975*	364	DW Coope		114 2005
244	AR Angus	46 2055		204	J Copley		64 1954
049	A Armstrong		55 2083	LM27	TJ Craig		217 2438
313	JM Armstrong	67 1635		305	AD Crawford	30 1740	
				332	JS Crawley	26 1575*	
016	EA Bailey	70 1995	17 1995*	LM19	D Crichton	125 1965	16 1946*
386	M Ballan		39 2008	233	RB Crosbie	174 1905	
387	NJ Banner	9 1685*		166	DR Cumming		96 2123
015	RWM Baxter		51 2313	326	JF Cumming	14 1795*	
155	R Beacon	356 2040					
LM11	CR Beecham		197 2115	282	E Davis	21 2215*	22 2118*
022	AGE Bird	128 2035		358	A Dearnley		78 2331
LM20	GH Bird		43 2064	388	OWF De Sousa	9 1905*	
LM88	C Black	21 1985*		345	S Donohoe	20 1905*	
LM09	AP Borwell		365 2309	316	CM Dowell	125 1855	
LM87	CF Boyle		105 2235	185	R Dowson	42 1885	
373	JC Boyle	14 1815*		134	MH Dunn	77 1920	
LM82	S Brady	52 2035	14 2113*	030	MT Dyer		95 2085
215	AC Brown	121 2220	28 2271*				
370	DE Brown	22 2210*		371	D Edney	24 2180*	
318	MG Brown	26 1405*		403	MB Edwards	10 1755*	
LM16	DM Bryson		155 2545	396	JT Ellison	13 1860*	
	AB Burnett	14 2080*	14 2134*				
040	JS Cairney	71 1805		384	SSJ Fairweather	24 1305*	
096	AWI Campbell	72 1885	14 1895*	110	JN Falconer	48 1955	20 2013*
038	IS Campbell		160 2138	284	JA Findlay	46 2200	
108	J Cassidy	215 1530		340	DS Finnie		116 2459
	MM Chalmers	12 1780*		372	HS Flockhart	19 1935*	21 2057*
252	JA Clayton	41 2115		219	MP Ford	37 1840	
		SCCA	ICCF	363	TS Franks	10 1685*	
						SCCA	ICCF

No	Name	Results/Grade	Results/Grade	No	Name	Results/Grade	Results/Grade
MJ Gifford		12 1725*		172	SG Mackenzie	49 1945	16 1889*
086	SR Gillam		111 2382	LM32	I Mackintosh		118 2304
LM51	PM Giulian		346 2420	200	G McKnight	11 1825*	
LM86	Mrs RA Giulian		45 1734	351	A MacLeod	10 2320*	
124	B Goodwin	72 2030	19 2222*	081	MJ MacLeod	88 1965	
051	K Gordon	141 1845		43	J McMenemy	144 1665	
LM76	BW Grant	63 1790		216	AN MacMillen		82 1968
399	J Grant	22 1775*		001	CA McNab		105 2520
245	KJ Guthrie	33 1815	14 1821*	193	A MacQueen	85 2035	
				LM02	DG McRoberts		42 2072
325	G Hamilton	16 1550*		330	A Madden	14 1605*	
390	J Hamilton	16 1730*		376	R Malcolmson	75 1820	
299	MG Harkins		38 2044	LM38	IA Marks		117 2162
039	W Harper	94 1825	22 2004*	LM66	IH Marshall		115 1898
LM56	Mrs EA Hartford		150 1939	083	A Maxwell	58 2010	12 1945*
063	D Harvey	170 1980	22 2003*	LM91	MA May	94 2160	
248	JB Henderson	30 2005	14 2156*	355	DG Meldrum	44 1755	
014	JM Herries	188 1930	27 2003*	178	B Milligan		63 2406
114	SH Hilton		75 1608	LM90	JR Milne	44 1670	
116	A Hind		30 2184	LM78	IWS Mitchell		38 2023
LM10	AT Hislop		147 2106	401	PJ Moir	59 1810	
377	R Holland	20 2005*		333	RS Montgomery	18 1935*	13 2309*
115	DA Hughson	43 2175	15 2235*	338	J Morrow	33 1915	
268	W Hynd	28 1750*		LM71	AJ Muir		40 2628
LM15	JPE Jack	190 1775		380	GAA Murphy	28 1905*	
312	CR James	111 1610		LM64	JS Murray	48 2080	12 1900*
255	IM Jamieson	22 1845*		234	SA Murray	33 2100	
LM14	DM Jenkins		66 2271	202	D Neil		31 2464
322	M Jessing	26 2035*		383	S Nicoll	16 1550*	
	MR Keen	10 2110*	18 2179*	147	A Nisbet	56 2130	13 2051*
LM77	AD Kilgariff	94 1775		225	AC Norris		75 2211
LM48	DA Kilgour		223 2509	315	AR Petrie	141 1780	
257	JW Kilgour	76 1645		379	GH Phillips		115 2262
021	R Kilpatrick		53 2225	229	G Plant	65 1970	
274	DL Kleppang	15 2130*		378	M Pollock	13 1520*	
260	A Knox	65 1600	15 1967*		D Price	8 2205*	
	WE Leithead	8 2020*		LM34	VA Proudler	83 1795	
256	CJ Lennox		55 2396	048	GD Pyrich		443 2379
LM37	DM Livie		98 2219	343	J Rawlinson	22 1895*	
LM03	GWG Livie		79 2264	136	IF Reeman		57 2204
264	G Lloyd	267 2165		LM75	DR Reid	36 2075	
337	R Loughran	111 1810		254	S Riley	72 1825	
LM04	JPL Lumsden	82 1840		293	A Roberts		52 2017
261	TF McAinsh	113 1650		362	P Robertson	10 1870*	
LM41	KB McAlpine		35 2545	319	S Robinson	8 1790*	
LM67	JM MacArthur	48 2035		357	ACW Robson	44 1915	
400	W McConchie	12 1275*		084	FR Ross	45 1590	
LM81	P McConnell	19 1840*			GJS Ross	10 1860*	
352	GR McDonald		34 1971		GC Rosser	10 1875*	
367	PH Macdonald	9 1965*	14 1944*	398	RE Rough	36 1430	
148	NR McEwan	30 1770	22 1937*	356	JF Rutherford	30 1640	
196	Mrs S MacGilchrist	22 1995*	28 2057*	LM89	D Salter	86 1950	
LM84	CA Macgregor	109 1630	26 1876*	LM22	DJ Savage		46 2041
391	C McIntee	51 2100	23 2104*	311	G Saxton	34 1965	29 2011*
	I McKechnie	10 1955*		265	B Setchell	8 1510*	
397	J McKenna	18 1795*		094	K Seyfried	68 1985	
394	PL MacKenzie	28 1730*				SCCA	ICCF
		SCCA	ICCF			SCCA	ICCF

No	Name	Results/Grade	Results/Grade
285	JK Shaw	11 2295*	
300	RJ Simpson	28 1660*	
057	I Sneddon		65 2234
LM65	GR Sprott		114 2358
360	C Stewart	12 1595*	
294	DJ Stewart		116 2332
LM46	KWC Stewart		59 2239
308	SF Sutherland	36 1220	
389	Ms G Swan	10 1615*	
	P Tait	14 1610*	
	T Tait	24 2025*	
LM30	TAH Taylor	54 1785	
	W Taylor	10 1920*	
336	F Teunisse	44 2050	19 1940*
365	B Thompson		86 2156
168	AC Thomson	38 1820	

No	Name	SCCA Results/Grade	ICCF Results/Grade
	P Thomson	8 1725*	
LM79	T Thomson		264 2438
270	D Trenner	39 1860	
129	RF Turner	131 2190	26 1970*
LM31	JM Walker	58 1665	
385	CR Wallace	8 2085*	
LM80	Joe Watson		105 2370
	John Watson	89 1855	
366	S Whitehead	29 1675*	
346	P Wildig	41 1670	
007	G Wood		31 2143
149	A Wright	109 1910	
	J Young	10 1840*	
LM92	SM Young	183 2030	

ICCF Ratings - Scotland October 2000 Top 30 established ratings (30 or more results)

Muir, A.J.	2628 GM	Milligan, B.	2406	Mackintosh, I.	2304
Bryson, D.M.	2545 GM	Lennox, C.J.	2396	Jenkins, D.M.	2271
McAlpine, K.B.	2545 IM	Gillam, S.R.	2382 SM	Livie, G.W.G.	2264
McNab, C.A.	2520 SIM	Pyrich, G.D.	2379 IM	Stewart, K.W.C.	2239
Kilgour, D.A.	2509 GM	Watson, J.	2370 IM	Boyle, C.F.	2235
Neil, D.	2464	Sprott, G.R.	2358 SM	Sneddon, I.	2234
Finnie, D.S.	2459 IM	Aird, I.	2354	Kilpatrick, R.	2225
Craig, T.J.	2438 IM	Stewart, D.J.	2332 SM	Livie, D.M.	2219
Thomson, T.	2438 IM	Baxter, R.W.M.	2313 SM	Norris, A.C.	2211
Giulian, P.M.	2420 SIM	Borwell, A.P.	2309 IM	Reeman, I.F.	2204

Note: SIM = Senior International Master SM = Scottish CC Master (all GMs, SIMs and IMs are also SMs)

100 CLUB

As the new SCCA Treasurer of the 100 Club, I would encourage all members to join to help with the development of the SCCA.

I am pleased to report that the number of units held is now over 60 but we need to increase this to 100. We hope you will help, please!

Recent prize-winners:

November	1 st	G. McKnight
	2 nd	D.M. Livie
December	1 st	I Mackintosh
	2 nd	A.P. Borwell
January	1 st	C.M. Dowell
	2 nd	A. Grant

Subscription is only £1 per month per unit with two prizes each month.

If anyone is interested, please contact myself :
Mr. P.J. Moir, 5 Cross Street, Scone, PH2 6LR
(01738-552681), Email patrick.moir@virgin.net

Chess Mail



**Subscribe now to this outstanding
international magazine for correspondence
chess and email players**

Edited by Tim Harding, this high quality monthly magazine contains up-to-date news of international CC tournaments, quality games and an excellent range of interesting articles written by worldwide contributors.

Obtainable from Chess Mail Ltd., 26 Coolamber Park, Dublin 16, Ireland, Email editor@chessmail.com or from Sam Collins at Chess & Bridge Suppliers (Scotland).

Excellent value! £28 for eight issues in 2001.

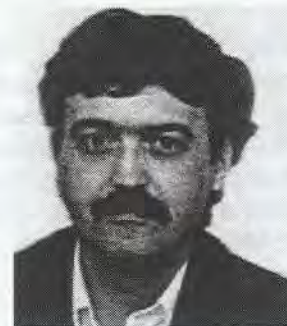
Stop Press!

Megacorr 2 CD with over 325,000 CC games will be available by Easter 2001.



GAMES SECTION

Selected by GAMES EDITOR Bernard Milligan,
15 Bothwell Court,
Hawick.
TD9 7EP.



This is the last full edition of the Magazine and I will miss it deeply. Over the years it seems to have become a part of our lives. I for one will be forever grateful to all its contributors, and there are too many to name, who have kept me entertained and informed over the years.

In particular I want to thank Alan and Moira Borwell for all their work. I wouldn't want to guess the man hours they spent over the years compiling the Magazine, but it has to be considerable.

This has been done with quiet dedication. So Alan and Moira enjoy your rest and remember you gave us a Magazine that we can all be proud of. It won't be forgotten and we will continue to enjoy the back issues for years to come.

After this issue, the Magazine will move onto pastures new. Some of you will receive it in electronic format and some of you will receive a smaller printed version. The articles will even be available on our Web site. In all cases the Games Column will continue so please continue to send in as many games as possible. In fact the Web site will have space for even more of your games so the more I receive the better.

It's rather fitting that in this historic last issue, I begin with two that were part of a historic achievement. Richard Beecham has just won the 2000/2001 Scottish Championship with a 100% score. No-one has ever won all their games in the Championship before, and Richard is such a nice chap he deserves it.

Richard has kindly annotated his win against me and his win against Iain Reeman. I am sure you will enjoy both games.

SCCA Championship 00/01

White: B Milligan

Black: C R Beecham

Queen's Indian. [E17]

[Annotator C R Beecham]

Playing Bernard is something that every c.c. player should experience, it's a riot of fun from start to finish. For me our game faded into a secondary role and that's how it should be, making c.c. a very special tool and Bernard a very special friend.

1	d4	e6
2	♟f3	♞f6
3	c4	b6
4	g3	♞b7
5	♞g2	♞e7
6	♞c3	0-0
7	♞c2	c5
8	d5	exd5
9	♞g5	h6



Now I thought long and hard about playing 9...♞a6! with the idea of playing after 10.cxd5 ♞b4 11.♞d2 ♞fxd5 12.♞xf7?! ♞e3!! 13.fxe3 ♞xg2 14.♞xd8 ♞xh1 15.a3 (15.♞d1 ♞axd8) 15...♞g2 16.♞xd7

♞f1+ 17.♞d2 ♞xd8 winning, but Bernard has a huge database and can play 12.♞xd5 ♞xg5 13.♞xg5 ♞xg5 14.♞xg5 ♞xd5 15.♞xd5 ♞xd5 16.0-0-0 with quite a good plus. I was sure he would find this. I also had vague memories of Korchnoi -Karpov 1974 which went 9...♞c6 10.♞xd5 g6 11.♞d2 ♞xd5 12.♞xd5 ♞b8 13.♞xh7 ♞e8 14.♞h6 ♞e5 15.♞g5 ♞xg5 16.♞xg5 ♞xg5 17.♞xg5 ♞xd5 18.0-0 ♞xc4 19.f4 Black Resigns. Also 9...g6 10.cxd5 d6 runs into 11.h4! Therefore by a process of elimination I came to...

10 ♞xd5 ♞xd5
11 cxd5

Also possible was 11.♞xd5 ♞c6 12.♞xc6 dxc6 13.♞f3 ♞d7 14.0-0 when I planned to play 14..♞e6 which is about equal.

11 ♞d6!?



I think this is new. 11...d6 was played in van der Stemen - Karner, Tallin 1987 and 11...hxc5! between Balashov - Tiviakov, St. Petersburg 1993 which continued 12.d6 ♞c6 13.dxe7 ♞xe7 14.♞xg5 d5 but I didn't fancy my two N's v 2 B's!

12 ♞e4 ♞xe4
13 ♞xe4 ♞e8

14 0-0 ♖a6

A look at the pawn structure suggests the future course of the game. Black has passed pawn Queen-side and White should push the e and f pawns aiming to obtain a winning attack with e5. Whoever executes his plan first wins.

15 a3 b5
16 ♕e3?!

I think this is wrong. He should go 16.b3! He has to play b3 anyway. The move played clogs up the e-file and delays White's strategic play of e4-e5 etc which never gets going.

16 ♗f6
17 ♖ad1 ♖ac8
18 b3 c4
19 bxc4 ♖xc4
20 ♕h7+ ♗h8
21 ♗b1 ♖b8
22 ♕d3 ♖c7
23 ♖d2

I was hoping for 23.♕xb5? ♖c5 24.♕d4 ♕e5 25.d6 ♗xd6 26.♗a1 ♕xd4 when Black has a slight plus.

23 ♖c5
24 ♕f5 a6
25 ♖d4

With this move White announces his intention to attack Black's King!

25 ♖d8
26 ♖g4 ♖a4
27 ♗d3 ♕e5
28 ♖c1?

An understandable mistake, the c3 square is very weak. The correct way to defend was by 28.♕d4 viz 28...d6 29.♖f4! ((see diagram)



Variation diagram after 29 ♖f4!

28...♖b2. 28...♖b2! Now White has real problems with the f5 Bishop. With 29.♗e4 ♖c4 30.♖xc4 ♖xc4 31.♗b1 ♖c3 Black is winning. Also 29...♗xf5 wins. Therefore White is forced into...

29 ♗b1 ♖c4
30 ♕d3 ♖xe3
31 fxe3 ♖xc1+
32 ♗xc1 ♗d6
33 ♕e4 a5
34 ♕g2 f5
35 ♖h4

The only square for the Rook! I spent some time trying to find a way to win this piece, but was happy to leave it well offside!

35 ♖b8
36 ♖h5 ♗f8
37 ♗f2

Strange, especially when 37.e4!?

37 b4
38 axb4 axb4
39 ♗b1 g6
40 ♖h4 b3
41 d6 b2
42 ♕d5 ♗xd6
43 ♕a2 ♖a8



44 h3 ♗d4

With Bernard's last move 44.h3 came the offer if 44...♗d4!! White resigns. The correspondence chess card also had a photograph of Bernard from the 70's, kipper tie and Gorilla hair style. I questioned his parentage and accepted his resignation. This game will always remind me of all that is good in correspondence chess.

[BM The photo was from the early 1980's and I categorically deny the kipper tie as I wasn't wearing a tie in the photo.]

SCCA Championship 00/01

White: C R Beecham

Black: I Reeman

Trompowski. Opening [A45]

[Annotator C R Beecham]

1 d4 ♖f6
2 ♕g5 ♖e4
3 ♕f4 d5
4 e3 ♕f5
5 f3

The quiet approach with 5.♖d2 did not interest me. For example 5...♖xd2 6.♗xd2 e6 7.♖f3 ♖d7 8.c4 dxc4! 9.♕xc4 ♖b6 10.♕d3 ♖d5 11.0-0 ♕xd3 12.♗xd3 ♖xf4 13.exf4 ♗d5 = as in Salov - van der Sterren, Biel izt 1993.

5 ♖d6

A rare continuation, which was played in the 1986 Soviet Union Ch. between Efimov - Kuzmin. White continued with . . . 6.g4 ♕g6 7.♖c3 e6 8.♗d2 h5 9.g5 ♖d7 10.0-0-0 and had the edge.

6 ♖c3 e6
7 ♗e2

I wanted to threaten the black Bishop with e4 rather than g4. If the Queen goes to d2 then the position is rather unclear viz 7.♗d2 ♖d7 8.0-0 c6 9.g4 ♕g6 10.h4 h6+

7 ♕e7
8 0-0-0 ♕g6

The prophylactic move against e4!

9 e4 c6



10 h4

The move 10.♖e3 also came into consideration. For example 10...♖a5 11.h4 h6 12.♖b1 b5 13.exd5 cxd5 14.♗xd5! ♗f5 15.♖c3 wins a second pawn. But Peter Leko played 10.♖e1 against M. Krasenko in the Rubinstein Memorial 1998, which continued with 10...0-0 11.h4 h6 12.♗d3 b5 13.♗xd6 ♗xd6 14.e5 ♗xd3 15.♗xd3 ♗e7 16.f4 ♖a5, when I preferred Black's position.

10 h5
11 ♗e1 ♗c4

With the rather transparent threat if 11...♗d7? 12.exd5 followed by 13.♗xd5 and wins.

12 ♖f2 ♗b4!?
13 ♗xc4 dxc4?!

A far better try was 13...♗xc3 14.bxc3 dxc4 which was the offered continuation. Perhaps Black suspected something?

14 ♗ge2 ♗d7
15 ♖g3 ♗f6
16 ♗d1 0-0

I had expected 16...♖d7 followed by Queen-side castling. With opposite side castling, White will engage the Black h-pawn first.

17 ♗g5 ♖b8
18 ♖f2 ♗e8
19 ♗xf6 gxf6
20 ♖e3 f5



A far better defence was 20...♖h7 21.g4 ♗f8 22.e5 fxe5 23.dxe5 ♗g7 24.gxh5 ♗xh5 25.♗d6 ♗h8 but White still has a big plus.

21 g4 h×g4

Losing is 21...fxe4 22.gxh5 ♗xh5 23.♗dg1+ ♖f8 24.♖h6+

22 h5 ♗h7
23 f×g4 f×e4
24 g5 ♗f5

No better was 24...♗xc3 25.g6! f×g6 26.h×g6 ♗xg6 27.♖g5 ♗xb2+.

25 ♗×e4 ♗×e4

So two Knights are better than two Bishops!

26 ♖×e4 c3
27 h6 c×b2+
28 ♖×b2 ♖d6
29 g6
1 0



I have played Robert Beacon on a number of occasions over the years and I can honestly say he has given me some very tough and enjoyable games. It's always a pleasure to play against Robert and, as with the following example, it is just as enjoyable to play through some of his games.

SCCA Premiers, 2000

White: G Murphy

Black: R Beacon

Albin Counter Gambit [D08]

[Annotator Robert Beacon]

1 d4 d5
2 c4 e5

The Albin Counter Gambit!

3 d×e5 d4
4 ♗f3 ♗c6
5 ♗bd2

Normal here is 5.g3, but the game soon transposes.



5...f6 is an attempt to play the game as a "pure" gambit. Alternatives for Black involve playing the white squared Bishop to g4 or e6, the Queen to d7 and 0-0-0, swapping off the Bishops once White has played g3 and ♗g2. Also in recent years, castling short and playing the game positionally has become popular!

6 e×f6 ♗×f6
7 g3 ♗g4
8 a3 ♖e7

Normal would be 8...♖d7 as mentioned. The text is an idea of Nikolay Minev in Inside Chess - I'm following the game Lignell-Niemela, 1941.

9 ♗g2 d3!
10 e3 ♗d4
11 0-0

11.h3 was obligatory according to Minev.

11 ♗e2+
12 ♖h1 0-0-0
13 ♖a4

13.b4 was played in the above mentioned game (if 13.h3 h5!). I'm now on my own!

13 ♖b8
14 b4 h5
15 ♗b2 h4
16 ♗×h4 ♗d7
17 ♖a5 ♗g4
18 ♗df3 ♖e8
19 ♗e5



19 ♖g5 with the idea of 20 ♖g6!?

19 ♗h5
20 ♗×d7+ ♗×d7
21 ♖a4 g5

For me it is "all or nothing" in this position. It is difficult to say what the alternatives are.

22 ♖f3 ♜e6
23 ♜g2?

The game now swings in Black's favour. Possibly 23.♜b5 to bring the Queen into the game would be better.

23 ♗xh4
24 h3 ♜xg3+

Forced.

25 fxe3 ♜g5
26 ♖g4 ♜e4+
27 ♜f3 ♜f7

The pressure now builds on White.

28 ♜af1 ♜xg3

With hindsight 28...♜xg4 followed by 29...h3+ looks stronger.

29 ♜f2 ♜f5

Black throws away some of his advantage. 29...♜e2 is the move!

30 ♜g1 ♖d6
31 ♜xf5



This is probably the decisive mistake. At this point the game was finely balanced. 31.c5!? looks better.

31 ♜xf5
32 ♜xf5

32 ♖d4 prolongs the game.

32 ♜xe3+

32...♜xg4+ 33.hxg4 ♜xg4+ 34.♜h1 ♜h3+ 35.♜g1 ♜h2+ 36.♜f1 ♜h1+

37.♜f2 ♖g3# would be more precise.

33 ♜f1 ♜x5+
34 ♖x5 ♖g3!

In a lot of lines in the Albin, White's Queen goes to a4 to pressure Black's queen-side. In this instance it was his undoing as it remained out of the game. The back rank threat was an illusion!

35 ♖d4

The Bishop threat comes too late.

35 ♜e1+
36 ♜g2 ♜e2+
37 ♜g1 ♜h2+
0 1



The next two games are from regular contributor Phil Guilian.

Some people think that Email chess is about as close to OTB chess as you can get in the correspondence world. So when you find yourself up against an OTB Grandmaster you know that you have a tough job ahead. Still it's worth all the work when you walk home with the points.

I was talking to Phil on the phone and was surprised to find he didn't keep notes of his plans as the game progressed. Phil said he preferred to play through the game and if he couldn't see what he was planning, with his last move, it couldn't have been that good, so he would have to find something better. Perhaps a strategy I could learn from.

Email Team Final
White: P Guilian
Black: Z Gyimesi

Queen's Gambit. [D39]
[Annotator P Guilian]

In the following game my opponent was an over the board Grandmaster and obviously a much better player than me. The one advantage was that I had access to a number of his games and was able to predict the opening. I chose a wild complicated opening which would have been

suicide over the board. However in correspondence, I reckoned that the abundance of theory would enable me to obtain a safe edge. Of course this idea is a load of rubbish.

1 d4 ♜f6
2 c4 e6
3 ♜f3 d5
4 ♜c3 dxc4
5 e4 ♖b4
6 ♖g5 c5
7 ♖xc4 cxd4
8 ♜xd4 ♖xc3+
9 bxc3 ♜a5
10 ♖b5+ ♜bd7

The alternative is 10...♖d7 11.♖xf6 gxf6 12.♜b3 a6 13.♖e2 ♜c6 14.0-0 ♜c7 15.♜a3 ♜c8 and White is slightly better.

11 ♖xf6 ♜xc3+
12 ♜f1 gxf6
13 h4 a6
14 ♜h3 ♜a5
15 ♖e2 ♜e5!?



This came as a complete shock. The move is given as dubious in all the books which quote a previous game from my opponent! That game (Maksimenko - Gyimesi 1997) continued 16.♜b3 b5 17.♜g3 ♖d7 18.♜g7 ♜e7 19.f4 ♜c6 and White has a clear advantage. Obviously my opponent must have an improvement. The more I analysed this game the less I trusted the line given in the books. I really didn't know what to do in this position and eventually decided to centralise and hope!

16 ♜b3 b5
17 ♜c3 ♖d7

Not 17...♖b7 18.♜xe6 winning.

18 ♜ac1 0-0!?

A important decision. I had expected 18...♖e7 (with the idea of ♖d8) 19.f4 ♘g6 20.g3 which I thought was level, but my opponent thought was better for White.

19 ♘f3 ♖b6??

I had expected 19...♖a4 20.♖xa4 bxa4 21.♘xe5 fxe5 22.♖c7 ♗b5 23.♗xb5 axb5 24.♖1c5 b4 which may be drawn!

20 ♘xe5 fxe5
21 ♖b4!!

I had intended 21.♖d1 ♖d8 22.♖d6 ♖c8 23.♖g3+ ♖h8 24.♖d1 ♖c7 25.♖xe5+ f6 and I am probably winning. However ♖b4 is much stronger because it keeps the d1 square for the Rook in some lines. The threat now is ♖g3+ and ♖d2.

21 ♖ac8



I had been looking at 21...♖d8 22.♖d1 f6 23.♗h5 a5 24.♖c5 ♖c8 25.♖a7 ♖xc3 26.♖xd7 winning

22 ♖g3+ ♖h8
23 ♖d1 ♖d8
24 ♖gd3 ♖xh4
25 ♖h3 ♖d8
26 ♖d2

And Black resigned because he must lose at least a piece. 1-0



E-Mail Olympiad
White: P Giulian
Black: S Terada

Queen's Gambit. [D39]
[Annotator P Giulian]

My head swollen by the above win, I decided to try the same opening again.

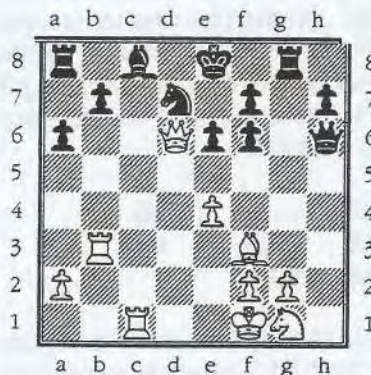
1 d4 ♘f6
2 c4 e6
3 ♘f3 d5
4 ♘c3 dxc4
5 e4 ♗b4
6 ♗g5 c5
7 ♗xc4 cxd4
8 ♘xd4 ♗xc3+
9 bxc3 ♖a5
10 ♗b5+ ♘bd7

The alternative is 10...♗d7 11.♗xf6 gxf6 12.♖b3 a6 13.♗e2 ♘c6 14.0-0 ♖c7 15.♖a3 ♖c8 and White is slightly better.

11 ♗xf6 ♖xc3+
12 ♖f1 gxf6
13 h4 a6
14 ♖h3 ♖a5
15 ♗e2

After my 15th move the position was the same as the previous game.

15 ♖e5
16 ♖c1 ♖g8!?
17 ♗g4!? ♘b6
18 ♖b3 ♖h2??
19 ♘f3! ♖h1+
20 ♘g1 ♖xh4
21 ♗f3 ♘d7
22 ♖d6 ♖h6



If 22 ... ♘e5 23.♖xc8+ ♖xc8 24. ♖xb7 wins.

23 ♖bc3 ♖d8
24 e5 ♖f8

25 ♖c7+ ♖e7
26 ♖d1 fxe5

The threat had been ♖d6+ and ♖xc8+ mating.

27 ♗xb7 ♖a7
28 ♖d6+ ♖f6
29 ♗xc8 ♖xd6
30 ♖xd6 ♖e7
31 ♖dc6

Not 31.♖xa6?? ♖xc8!

31 ♖d8
32 ♘f3 f6
33 ♘d2 ♘f8
34 ♘e4 ♖d1+
35 ♖e2 ♖g1
36 ♖g3 ♘g6
37 ♖xe6+ ♖d8
38 ♖c6
1 0

and Black resigned.



Next a nice little miniature from Jonathon Lennox. Not a bad way to start out in a World Championship Tournament.

ICCF World Ch 24
White: Dr C Barnett
Black: C J Lennox

Sicilian Najdorf [B97]

[Annotator C J Lennox]

This game does not merit publication, but as my first result in the World Ch, it has a little historical interest, and it might provide some light relief from Joe Watson's games!

1 e4 c5

My opponent is a 67 year old semi-retired GP, living at Bendi Junction, who quickly informed me that he had known Purdy.

2 ♘f3 d6
3 d4 cxd4
4 ♘xd4 ♘f6
5 ♘c3 a6
6 ♗g5 e6
7 f4 ♖b6
8 ♘b3 ♘bd7
9 ♖f3 ♖c7

Trying to improve on 9...Be7 with which I had scored 0/2. My opponent also favours the Najdorf.

10 Qd3 b5
11 0-0-0 Qb7
12 Qxf6 Qxf6
13 Qb1 Qe7



In reply to this I received an interesting letter which contained no moves; my hopes rose accordingly.

14 g4 Bc8
15 g5 Qd7
16 Qh3 b4

At this point my opponent took a month off to avoid distraction from the Sydney Olympics.

17 Qe2 d5

Barnett repeated this move correctly but on his board he apparently moved my e-pawn instead (his comments had revealed a preference for descriptive notation) so:

18 Bhg1?? dxe4



And finally the follow up game to the one provided by Joe Watson in the previous Magazine. Once again I will take responsibility if any of the variations appear in the wrong place.

BPCTC 1997/98

White: I Bell

Black: J Watson

French Tarrasch. [C06]

[Annotator J Watson]

1 e4 e6
2 d4 d5
3 Qd2

The French Tarrasch, a favourite of Anatoly Karpov, and the subject of a new book by John Emms published after the start of this game.

3 Qf6
4 e5 Qfd7
5 Qd3 c5
6 c3 Qc6
7 Qe2 cxd4
8 cxd4 f6

Thematic, and one of Black's most popular methods of combating the French Tarrasch in the past 10 or so years. White normally exchanges on f6, but a hardcore of Scandinavian and postal players prefer Qf4 here, leading to an exciting struggle where Black drops an exchange (the Rook on h8) but gets a strong centre and good development for it. John Watson prefers 7...Qb6 in *Play The French* (both editions), which is just as viable.

9 exf6 Qxf6
10 0-0 Qd6
11 Qf3 Qc7
12 Qc3

An old line, but there is nothing wrong with White's plan. Black is more or less forced to play a6 to stop the threatened Qb5, but this weakens the Black squares on the Queen-side, notably c5 and b6. White could then settle a Knight on c5 (via a4), pressurising e6, b7, a6 and probably Black's white-squared Bishop. On the other hand, moving the Knight from e2 means White has less control over the squares g3 and f4, allowing Black counter-play on the King-side.

12 a6
13 Qg5 0-0
14 Qh4

White's idea is to reduce pressure along the b8-h2 diagonal by offering an exchange of Bishops on g3. Black needs a good counter to this plan...

14 Qh5

... and this is it. It is nearly always dim to stick a Knight on the rim, but here the trusty steed intensifies Black's pressure on the key squares g3 and f4, allowing Black to keep his black-squared Bishop, his best minor piece.

15 Bf1



In a Civil Service league match some years ago, my Home Office opponent tried... 15.Qc2 when I missed the thematic ... 15...Bxf3! (15...g6 16.Qxg6? Qf4 17.Qd3 Qb4 winning a piece (Emms).) 16.Qxh7+ (16.gxf3 Qxd4 17.Qd1 Qxh2+ 18.Qh1 Qf4+) 16...Qh8 17.gxf3 Qxd4 18.Qd3 Qxh2+ 19.Qh1 Qf4 20.Qe7 Qg1! 21.Qxg1 Qxf3 22.Qg2 Qh6 23.Qh4 (23.Qg6?? Qg3#) 23...Qxh4 24.Qh2 g5 25.Qe4 dxe4 26.Qxe4 Qf6 and White is in serious trouble as soon as Black activates his Bishop, perhaps by e5, or with Q-d7-c6 if White plays Qe5 himself.

15 g6

h6 was good enough in Shmuter - Nosenko, Ukraine Championship 1988, with Qf4 as a follow-up, but g6 instead is natural and good. As well as blunting White's attack on h7, playing g6 clears the way for the black Queen to settle on g7 in some lines. In turn this intensifies the pressure on the white pawn on d4.

16 Bc1 Qg7
17 Qf1 Qd7
18 Qg5 h6
19 Qe3 Qf4

Qf6 and Bf7 are the other moves played here. In 1984, Mestel played Bf7 against Karpov unsuccessfully. Commentators suggested at the

time that ♖f4 is probably better. It certainly seems best to me.

20 g3 g5
21 ♖a4

Both gxf4 and ♖h1 were the main alternatives. Black seems fine in these lines too. 21.gxf4 gxf4+ 22.♖h1 fxe3 23.fxe3 ♖g4 24.♗e2 ♖h3 25.♖g1+ ♖h8 26.♖g2 ♖g8 27.♖f1 ♖xg2 28.♖xg2 ♖xg2+ 29.♖xg2 ♖g8+ 30.♖f2 b5 31.♗d3 ♗e8 32.a3 ♖f8 33.♗e2; 21.♖h1 ♗g6 22.♗g2 b5 23.♗g1 ♖f7 24.♖h5 ♖af8 25.♗f3 ♖f5 26.a3 ♗f4 (26...♗h8 27.♖g4 e5 28.♗xe5 ♖xe5 29.♖d1 ♖ee8 30.♗xd5+ ♗f7 31.♗xb5 axb5 32.♗xc6 ♗xc6+ 33.♖xc6 ♖g6 34.♖f3 g4 35.♖d5 ♖e6 36.♖xe6 ♖xe6 37.d5 ♖e4 38.♖g2 ♖fe8 39.h3 h5 40.hxg4 hxg4 41.♖h1 ♖xe3 42.fxe3 ♖xe3 43.♖c3 ♖e2+ 44.♖f1 ♖xb2 45.♖h4 ♗e5 46.♖h6 ♗f8 47.♖b6 ♖a2 48.♖xb5 ♗f3=) 27.gxf4 gxf4 28.♖h3 fxe3 29.fxe3 e5 30.♖g1 ♖h8

21 ♖f7
22 ♗b6 ♖af8
23 ♗xd7 ♖xd7
24 ♗xf4

24.♗xa6? g4 25.♗h4 ♗h3+ 26.♖g2 ♗e7 27.♗e2 (27.♗xb7 ♖xb7 28.♖xc6 ♖xb2 29.♖a1 ♖bxf2+ 30.♗xf2 ♖xf2+ 31.♖h1 ♗xh4 32.♖xe6 ♗g5 33.♖b1 ♖f7 34.♖g6+ ♖xg6 35.♖xg6+ ♖f7 36.♖d6 ♖xa2 37.♖xd5 ♗f6 38.♖d7+ ♖g6 and White cannot satisfactorily meet the threat of ♗g5.) 27...h5 28.♗d3 ♗xh4 29.gxh4 ♖f6 0-1 Pantaleoni - Chapman, corr. 30.♗b5 ♖df7 31.♗xc6 bxc6 32.♖c2 ♖f5 33.♗h6 ♗xf2 34.♖e2 ♗d3 35.♖d1 ♖f2+ 36.♖h1 ♖xe2 37.♖xe2 ♗f2+ 38.♖xf2 ♖xf2 39.♗xf8 ♖xf8 40.a4 ♖xb2

24 gxf4
25 ♗h3

25.♖xe6 fxg3 26.fxg3 ♖g4 27.♖xh6 ♖xf3 28.♖xf3 ♖xf3 29.♗g2 ♖f5 30.♗h3 ♗xd4 31.♖h1 (31.♖c8+) 31...♗e7 may be better than 31...♖d8. (31...♖d8 32.♖d1 ♗e5 33.♖xd4 ♖f2! 34.♖b4 ♖xb2 35.♖xb2 ♗xb2 36.♖b6 ♗c3).

A) 32.♗xf5 ♗xf5 33.♖c8+ (33.♖e6 d4 34.♖d1 ♖f7 35.♖e2) 33...♖g7 34.♖hh8 d4+
B) 32.♖d1 ♖c7 33.♗xf5 ♗xf5 34.♖e6 d4 35.♖d3 ♗e3 36.h4 ♖f7 37.♖xd4 ♖xe6 38.♖e4+ ♖f5 39.♖xe3 ♖g4+)

25 fxg3!

A sharp exchange sacrifice for long-term pressure and what soon becomes a vicious attack against the white King.

26 ♗xe6+



26.hxg3 ♗xg3 27.♗xe6+ ♖h8
28.♗xd7 ♗f4+ 29.♖f1 ♖xd7
A) 30.♖xc6 ♖h3+ 31.♖e2 ♖e8+ 32.♗e5

A1) 32...bxc6 33.♖d3 ♖xd3+ 34.♖xd3 ♖g7! (34...♖h7) 35.♖g1+ ♖f6 36.♗xc6 (36.♖g6+ ♖f5 37.♖xc6 ♗xe5 38.dxe5 ♖e6 39.♖c1=) 36...♗d6 37.♖h1 ♖g5 38.♗e5 ♗xe5 39.dxe5 ♖xe5 40.f4+ ♖xf4 41.♖xh6 a5 42.♖a6 ♖e3+ 43.♖d4 ♖e2 44.♖xa5 ♖xb2 45.♖xd5 ♖d2+ 46.♖c5 ♖e4

A2) 32...♗xe5 33.dxe5 ♖xe5+ 34.♖d2 ♖xe1 35.♖xh6+ ♖xh6+ 36.♖xe1 ♖e6+ 37.♖e2 ♖f5= 38.♖d2 ♖g7 39.♖c3 ♖f6+ 40.♖d3

B) 30.♖c3 ♖h3+ 31.♖e2 ♖e8+ 32.♗e5 ♖h5+ 33.♖f1 ♖h1+ 34.♖e2 ♗xd4+ 35.♖xd4 ♗xe5 36.♖xh1 ♗xd4+ 37.♖d3 ♗xc3 38.bxc3 ♖g7

26 ♖h8
27 ♗xd7

27.hxg3 ♗xg3 28.♗xd7 ♗f4+ 29.♖f1 ♖xd7 30.♖c3 ♖h3+ 31.♖e2 ♖e8+ 32.♗e5 ♖h5+ 33.♖f1 ♖h1+ 34.♖e2 ♗xd4+ 35.♖xd4 ♗xe5 36.♖xh1 ♗xd4+ 37.♖d3 ♗xc3 38.bxc3 ♖g7. Three pawn islands

each, but Black's extra pawn should mean victory, despite White's well-developed King.

27 gxf2+

Only move. 27...♗xd4? 28.♖c8!; 27...gxh2+?! 28.♖h1 ♖xd7 29.♗h4! ♖xf2 30.♖h5 ♖f6 31.♖xd5 ♖g4 32.♖e4 ♖g5 33.♖e8+ ♖h7 34.♖e4+ ♖g7 35.♖e1 ♖f4 36.♖e6 ♗f8 37.♗g2 ♖f2 38.♖h3

A) 38...♖h7 39.♖8e2 ♖xe2 40.♖xe2 ♗xd4 (40...♖f6 41.♖d3++-) 41.♖d3+! ♖f5 42.♖e4+

B) 38...♗xd4 39.♖8e4

28 ♖xf2 ♖xd7
29 ♖g1



29.♖e3 ♗f4; 29.♖c3 ♗b4; 29.♖h1 ♖g4! 30.♖g1 ♖xd4+ 31.♖g2 (31.♖xd4+ ♗xd4+; 31.♖f1? ♖xd1+ 32.♖d1 ♖xf3+!) 31...♖g4+ 32.♖f2 ♖b4 33.♖g6 ♖h7 34.♖e6 ♖xb2+ 35.♖e2 ♖xf3+ 36.♖xf3 ♗d4+ 37.♖f2 ♗xe2 38.♖c2 ♖d4+ 39.♖xe2 ♖g4+ 40.♖d2 ♗f4+ 41.♖e1 ♖g1+ 42.♖e2 ♖xh2+ 43.♖d3 ♖g3+ 44.♖e2?? (44.♖d4 ♖g7+ 45.♖d3 ♖g6+ 46.♖d4 ♖e4+ 47.♖c5 ♖e7+ 48.♖b6 ♗e3+ 49.♖c5 ♗xc5+-) 44...♖g2+ 45.♖d3 ♖e4+ 46.♖c3 ♖c4+ 47.♖b2 ♖b4+ 48.♖a1 ♗e5+ 49.♖b2 ♖xb2*; 29.♖d3 ♖g4

A) 30.♖cd1 ♗xh2 31.♖g1 (31.♖h1 ♖g3+ 32.♖e2 ♖g2+ 33.♖e3 ♖xf3*; 31.♖f1 ♗g3+ 32.♖e2 ♖e8+ 33.♖d2 ♗f4+ 34.♖c3 ♖e3) 31...♗xg1+ 32.♖xg1 ♖xd4+-

B) 30.♖c3 ♗xd4 31.♖e3 ♗xh2 32.♖e1 ♗e5 33.♖a3 ♖c8 34.♖xe5 ♗xf3+ 35.♖xf3 ♖g1+ 36.♖e2 ♖h2+ 37.♖d1 ♖xe5+

29 ♖h3

29...♙xh2 30.♖g2 ♖h3 31.♖c3 ♖h4+ 32.♖f1± ♖xd4? 33.♖c8!

30 ♖g2

30.♖c3 ♖xh2+ (30...♙xh2 31.♖g2 ♖h4+ 32.♖f1 ♖xd4? 33.♖c8!+)
31.♖g2 (31.♖f1 ♖xb2 32.♖d3 ♖a1+ 33.♖e2 ♖xa2+ 34.♖d1 ♖xf3 35.♖g8+ ♖xg8 36.♖g6+ ♖h8 37.♖xh6+ ♖g8 38.♖g6+=)
31...♙g3+ 32.♖f1 ♖h1+=; 30.♖g3 ♖xh2+ 31.♖g2 ♙g3+ 32.♖f1 ♖h1+—

30 ♖f4!

Simple chess. Black plans to gang up on the white pawn on d4, to increase the pressure on the white Knight on f3, and improve the scope of Black's Bishop. Surely the white King cannot survive long in such an open position.

30...♙xh2 31.♖c3 ♙b8

A) 32.♖d3 ♙a7 (32...♖e5 33.♖e2 ♖h4+ 34.♖f1 ♖xf3 35.♖xf3 ♖h1+ 36.♖f2=) 33.♖g3 ♖h2+ (33...♖h1 34.♖g6! ♙xd4+ 35.♖e2 ♙f6 36.♖g1 ♖h3 37.♖e3) 34.♖g2 ♖f4+ (34...♖h5 35.♖e1 ♙xd4 36.♖b3 ♖h1+ 37.♖f1 ♖xf1+ 38.♖xf1 ♖f7 39.♖h2 ♖h7 40.♖h5 ♖e5 41.♖e2 ♖xf3 42.♖xf3 ♖xf3± 43.♖xf3 ♖g6 44.♖xd5 ♙xb2 45.♖d7 b5 46.♖d8 a5 47.♖d5 a4 48.♖xb5 a3 49.♖g4 ♙f6 50.♖a5 ♙b2 51.♖a6+ ♖g7 52.♖f5 h5 53.♖g5 ♖f7 54.♖xh5 ♖e7 55.♖g5 ♖d7 56.♖f5 ♖c7 57.♖e4 ♖b7 58.♖e6 ♙c1 59.♖d5 ♙b2 60.♖c5 ♙c1 61.♖b5 ♙b2 62.♖e7+ ♖c8 63.♖c6 ♖b8 64.♖d7 ♖c8 65.♖c7+ ♖b8) 35.♖e1 ♖xd4 36.♖g6 ♖xf3+ 37.♖xf3 ♖c1+ 38.♖e2 ♖xb2+ 39.♖d1 ♖a1+ 40.♖e2 ♖e5+ 41.♖d2 ♖d4+=

B) 32.♖f1 ♖h5 33.♖d3 ♙a7 34.♖e1 ♙xd4 35.♖xc6 (35.♖b3 ♖h1+ 36.♖f1 ♖xf1+ 37.♖xf1 b5 38.♖d3 ♙g7 39.♖f2 ♖f5) 35...♖h1+;

C) 32.♖g1 ♙a7 33.♖d3 ♖xd4 34.♖xd4 ♖h4 35.♖e2 ♖g8+—;

31 ♖g3

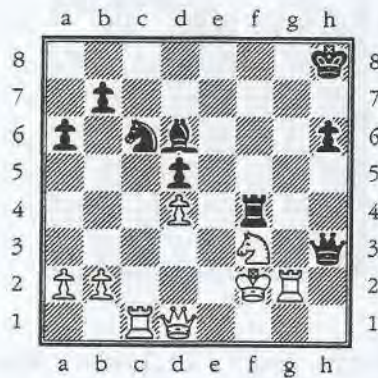
31.♖c3 ♖xd4 32.♖g3 ♖xh2+ 33.♖g2 ♖h4+ 34.♖g3 ♖xf3+ 35.♖xf3 ♖xf3 36.♖xf3 ♖xg3+[]+; 31.♖g6? ♖xd4! 32.♖xd4+ (32.♖xd6? ♖xf3+ 33.♖g1 ♖g4+

34.♖h1 ♖e4+) 32...♖xd4 33.♖xd6— ♖d2+ (33...♖d3 34.♖d8+ ♖h7 35.♖c7+ ♖g6 36.♖g8+ ♖h5 37.♖f7 d4 38.♖f6 ♖d2+ 39.♖e1 ♖xh2 40.♖xh2+ ♖e3+ 41.♖f1 ♖c1+ 42.♖g2+) 34.♖e3 ♖g2 35.b3 (35.♖d8+ ♖g8 36.♖xg8+ ♖xg8+) 35...♖g7 36.♖f6 ♖g4 37.♖d1 ♖g7 38.♖f4 ♖xf4 39.♖xf4 ♖e6 40.♖d4 a5—

31 ♖xh2+

Picking up a pawn for the exchange, but more importantly removing a hiding place for the white King.

32 ♖g2 ♖h3



32...♖h4+ 33.♖g1 ♖f6

A) 34.♖c3 34...♙e7 (34...♙f8 35.♖e3 ♖xd4 36.♖e5 ♖h7 37.♖d3+ ♖f5 38.♖d7 ♖d8 39.♖xf8+ ♖xf8 40.♖eg7; 34...♖e6 35.♖h1 ♖f6 36.♖b3 ♖f7 37.♖d3 ♖b4 38.♖e3 ♖xa2; 34...♖e4 35.a3 ♙c7 36.♖d3 ♙b6 37.♖gd2 ♖g4+ 38.♖h1 ♖f4 39.b4)

A1) 35.♖b3 ♖xd4 36.♖xd5 ♖xf3+ 37.♖xf3 ♙c5+ 38.♖h2 ♖h4+ 39.♖g3 ♙d6+

A1a) 40.♖f2 40...♖xb2+ 41.♖e3 ♖c3+ (41...♖xg2 42.♖f8+ ♙xf8 43.♖xg2 ♙c5+ 44.♖f3 ♖b4 45.♖g6 ♙f8 46.♖f7 ♙g7 47.♖e7 ♖b5 48.♖e8+ ♖h7 49.♖e4+ ♖g8 50.♖e8+=) 42.♖e2 ♖c2+ 43.♖d2 ♖c4+ 44.♖d3 ♖e4+ 45.♖d1 ♖h1+—

A1b) 40.♖xd6 ♖xd6+ 41.♖xh4 ♖e7+ 42.♖g3 ♖e5+ 43.♖f4=

A2) 35.♖d3 ♙f8 36.♖f2 ♙g7 37.♖d2 ♖b4 38.♖b3 ♖xa2 39.♖e3 ♙f8

B) 34.♖e5 ♖xe5 35.dxe5 ♙xe5 36.♖c8+ (36.♖xd5 ♖b6+ 37.♖c5 ♖xc5+ 38.♖xc5 ♙d4+ 39.♖xd4+ ♖xd4) 36...♖h7 37.♖d3+ ♖e4 38.♖c1 ♖h4 39.♖f1 h5! 40.♖gf2 (40.♖d2 ♖h6! 41.♖ff2 ♖g4+

42.♖g2 ♖e1+ 43.♖f1 ♙h2+ 44.♖xh2 ♖xf1—) 40...♙d4 41.♖g2 ♖g5+ 42.♖h1 ♙xf2 43.♖xf2 ♖h6 44.♖d2 ♖h4+ 45.♖h2 ♖xd2—)

33 ♖g3

33.♖c3 ♖xd4 34.♖g3 ♖h2+ 35.♖g2 ♖h4+—; 33.♖g6 ♖xd4 34.♖xd4+ ♖xd4 35.♖xd4 ♖h4+ 36.♖e3 ♖e4+ 37.♖d2 ♖xd4+

33 ♖e6!

It is important to combine defence with attack. Here the Queen polices Black's vulnerable back rank, as well as commanding the e-file.

34 ♖d3

34.♖g1 ♖xd4 35.♖g3 ♖f5—+; 34.♖g1 ♖f6 35.♖g2 ♖e3+—+; 34.♖g2 ♖e4 35.♖e5 ♖xd4 36.♖g6+ ♖h7 37.♖f3 ♖d2+ 38.♖h1 ♖e4!—+ 39.♖xe4 dxe4 40.♖f8+—+

34 ♖xd4

35 ♖e1 ♖f7

36 ♖h1

36.♖g2 ♖f5 37.♖c3+ (37.♖c1?? ♖xg3[]+) 37...d4 38.♖c8+ ♖h7 39.♖h1. Sneaky - threatening a big check on g5! 39...♙e7 40.♖c2 ♖d5 41.♖h5 d3 42.♖c3 ♖f7 43.♖xf5 ♖xf5 44.♖xd3 ♖d5 45.♖c3 ♙g5 46.♖c7+ ♖g6 47.♖b6+ ♖f6 48.♖f2; 36.♖c1. Probably White's best attempt now.

A) 36...♖f8

A1) 37.♖h1 ♙c5

A1a) 38.♖g2 38...♖f5! 39.♖g6 (39.♖e5 ♖f2+ 40.♖h3 ♖f6 41.♖g6+ ♖h7 42.♖g4 h5 43.♖f4 ♙e3!—+ 44.♖xd5 ♖d6 45.♖g2 ♖f3+ 46.♖g3 ♖xg3#; 39.♖gh3 ♖g7+ 40.♖f1 ♖e3+ 41.♖e1 ♙b4+ 42.♖d2 ♖d4 43.♖xe3 ♙xd2+ 44.♖xd2 ♖xd2 45.♖xh6+ ♖g8 46.♖xd2 ♖xb2+ 47.♖d3 ♖xa2 48.♖h8+ ♖f7 49.♖h7+ ♖f6 50.♖h6+ ♖g5 51.♖h5+ ♖f6 52.♖h6+ ♖e7 53.♖h7+ ♖d6+ 54.♖xb7) 39...♖e3+ 40.♖xe3 ♖g4+ 41.♖xg4 ♙xe3 42.♖h5 ♖f7—

(A1b) 38.♖c3. Only move. 38...♖f6 39.♖g2 ♖e2—+

A2) 37.♖c3 ♖f6 (37...♙e5 is nothing special. 38.♖c8 ♖f5 39.♖xf8+ ♖xf8 40.♖h3 ♖h7 41.♖d1 ♖g6 42.♖g1+ ♖h7 43.♖d1

b5 44.♔g2 ♖xf3 45.♞xf3 ♞d8
46.♞f5 ♞xb2=) 38.♞h3 ♞e5
39.♞c8 ♖xf3 40.♞xf8+ (40.♞xh6+
♔g7 41.♞xf6 ♞xf6 42.♞xb7+ ♔g6
43.♞c6 ♞d6 44.♞xd6 ♞xd6
45.♔xf3=) 40...♞xf8 41.♞xf3;

B) 37.♞c3 ♞e5 38.♞c8 ♞f6 39.♞h3
♖xf3 40.♞xf8+ ♞xf8 41.♞xf3 ♞d4+
42.♔e2;

(C) 36...♞e4 37.♞c8+ ♔h7 38.♞g4!
♞f5 (38...♖xf3 39.♞xf3 ♞e6
40.♞xe4 dxe4 41.♞c3 ♞e5 42.♞c4
♞f6+ 43.♔e1 ♞h4+ 44.♔d2 ♞f4+
45.♔e1 ♞g3+ 46.♔f1 ♞f3+
47.♔e1) 39.♞xe4 Only move.

39...dxe4 40.♞xd4 ♞xf3+ 41.♔e1
C1) 41...♞g3+ 42.♔d2 ♞f4+
43.♔e1 (43.♔c2) 43...♞g3+ 44.♞f2
♞d2+ 45.♔f1 ♞h3+ 46.♞g2 ♞xc8
47.♞xe4+ ♔g7 48.♞d4+ ♔h7
49.♞xd2 Is there a perpetual here?)

C2) 41...♞g3+ 42.♔d2 ♞g2+
C2a) 43.♔e1! ♞h1+ 44.♔e2 ♞f3+
45.♔d2 e3+ 46.♔c1 ♞f1+ 47.♔c2
♞f2+ 48.♔c3 ♞f4 49.♞xf4 ♞xf4
50.♔d3 (50.♞c4+)

C2b) 43.♔c3 ♞h3+ 44.♔d2 ♞f4+
45.♔e2 ♞xc8 46.♞xe4+ ♔g7
47.♞d4+ ♔g6 48.♞xf4 ♞c2+
49.♔f1 ♞f5+)

36 ♖f5
37 ♞c3+



37.♞gh3 ♞e6 (37...♞c5+
38.♔e1♞) 38.♞c1 (38.♞e1? ♞c5+
39.♔g2 ♖e3+ 40.♔h2 ♞xh3+
41.♔xh3 ♞xf3+ 42.♔h2 ♖g4+-)

A) 38...♞e5 39.♞e1 ♞b6+ 40.♔f1
♞e6 (40...♞xb2 41.♞xd5 ♖e3+
42.♞xe3 ♞xe3 43.♞xh6+ ♔g7
Perpetual check.) 41.♔f2 ♖d4
42.♞eh1 ♞xf3+ 43.♞xf3 ♖xf3
44.♞xf3 ♞d4+ 45.♔f1 ♞xb2
46.♞h5 d4 47.♞xb7 ♞c4+ 48.♔g1
♞c1+ 49.♔h2=;

B) 38...♞b8 39.♞c3+ ♔h7 40.♞d3
♞b6+ 41.♔g2 ♞xb2+ 42.♞c2
♞g7+ 43.♔h1 ♞a1+ 44.♖g1 ♞d4
45.♞xd4 ♖xd4 46.♞ch2 ♖f5

47.♞d3 ♔g6 48.♖f3 ♔f6 49.♞c2
♞d6 50.♔g2 h5 51.♔h3 b5+)
37.♞g2 ♖h4 38.♞g3 ♞e4 39.♞gh3
♞c5+ 40.♔f1 ♞e3+; 37.♞gh3;
37.♞xf5 is flashy but inadequate.
37...♞xf5 38.♞xh6+ ♞h7 39.♞xh7+
♔xh7 40.♞g2

37 d4
38 ♞c8+

38.♞c2 ♖xg3 (38...♞e6 39.♞e1
♞f7 40.♞h1 ♞e6 41.♞e1 ♞xe1+
42.♔xe1 ♖xg3 43.♞c8+ ♞f8
44.♖xd4+; 38...♞f6! 39.♞gh3 d3
40.♞xd3 ♞xb2+ 41.♔f1 ♞a1+
42.♔e2 ♞xa2+) 39.♞xh6+ ♔g8
40.♞g6+ ♔f8 41.♞c8+ ♔e7
42.♞xb7+ ♔f8 43.♞c8+ ♔e7
44.♞b7+=

38 ♞f8

38...♔h7
A) 39.♞gh3 39...♖h4 40.♞c2+
♖f5?? (40...♞f5 41.♞b3 ♞e7
42.♞g3 ♞xf3+ 43.♞xf3 ♖xf3
44.♞xf3 ♞xf3+ 45.♔xf3=)
41.♞xh6+
B) 39.♔g2 ♞e7 40.♞c2 ♞xa2
41.♞e1 d3 42.♞c3 ♞d6+ 43.♞e8
♖xg3 44.♞h8+ ♔g6 45.♞g8+ ♔f5
46.♞h7+ ♔e6 47.♞e8+ ♔f6
48.♞h8+ ♔g6 49.♞g8+ ♔f5
50.♞h7+= ♔e6=

39 ♞gh3

White defends very actively, with his major pieces bearing down on the black King. He has succeeded in activating his Rooks aggressively, and has pinned the Bishop to the King. So, how to proceed? 39.♞hg1 ♖xg3 40.♞xg3 d3 41.♞c3+ ♞g7 42.♞xd3 ♞xa2 43.♔e3 ♞h4♞+ 44.♖e5

39 d3!

A decoy, to tempt the white Queen away from the back rank, which in turn frees Black's Bishop.

40 ♞d8

40.♞d1 ♞g7 41.♞xd3 (41.♞d2 ♖d6
42.♞b8 ♞g4 43.♞xh6+ ♔g7
44.♞xd3 ♖e4+ 45.♔e2 ♔xh6)
41...♞xb2+ 42.♔f1 (42.♔e1 ♞e4+
43.♔d1 ♞b1+ 44.♔d2 ♞xa2+
45.♔d1 ♞e2+ 46.♔c1 ♞c4+! This
winning idea crops up in a couple of

variations. 47.♞xc4 ♞a3+ 48.♞xa3
♞xc4+ 49.♔d1+;

42.♔g1! ♞g4+ 43.♔f1 ♞g2+
44.♔e1 ♞e4+! 45.♔d1 ♞e2+
46.♔c1 ♞c4+ 47.♞xc4 ♞a3+ 48.
♞xa3 ♞xc4+ 49.♔d1+)

A) 43.♔e2 ♞xa2+ 44.♞d2 (44.♖d2
♔g8 45.♞d8 ♞f7 46.♔d1 ♞g7
47.♞e6+ ♔h8 48.♞hd3 ♖d4
49.♞e3 ♞g4+ 50.♔c1 ♖f3 51.♞a8
♖xd2 52.♔xd2 ♔h7=) 44...♞g8
45.♖g5? ♖d4+ 46.♞xd4 ♞xd4+;

B) 43.♔f2 ♞xa2+ 44.♔f1 ♞b1+
45.♔g2 ♞g4+ 46.♔f2 ♞b6+ 47.♔f1
♞c5 48.♞c3 ♞b5+ 49.♔f2 ♞g8+
40.♞c1 ♖d4 41.♔e3 ♞xf3+ 42.♞xf3
♖xf3 43.♞f1 d2 44.♞d8 d1♞
45.♞xd1 ♖e5+)

40 ♞g7
41 ♞xd3



41.♔e1 ♞c4

A) 42.♞xd3 ♞c1+ 43.♔f2 ♞c5+
44.♖d4 (44.♔e2 ♞g2#)
44...♞xd4+ 45.♞xd4 ♞xd4+
46.♔f3 ♞e3+ 47.♔g4 ♞c4+
48.♔xf5 ♞g5+ 49.♔e6 ♞c6+
50.♔d7 ♞g7+ 51.♔d8 ♞c7+
52.♔e8 ♞e6+ 53.♔f8 ♞g7#;

B) 42.♔d1 ♖e3+ 43.♔e1
B1) 43...♔g8 44.♞xd3 (44.♞xh6?
♞g3+ 45.♔d2 ♞f2+ 46.♔xd3
♞c2+) 44...♞g2 45.♞xc4+ ♖xc4
46.♞g1 ♞b4+ 47.♔d1 ♖xb2+
48.♔c1 ♖d3+ 49.♔b1 ♞xg1+
50.♖xg1 ♖f4 51.♞xh6 ♞c5 52.♞f6
♖d3+)

B2) 43...♞c1+
B2a) 44.♔f2 44...♖g4+ 45.♔g3
♖f6+ (45...♖h2+ 46.♔f4 ♞g4+
47.♔e3 ♞e6+ 48.♔f4 ♞c4+ 49.♔g3
♞g4+ 50.♔xh2 ♞e2#) 46.♔f2

B2b) 44.♔d2 ♖c4+ 45.♔xd3 ♞g6+
46.♔d4 ♞g4+ 47.♔d3 ♞f5+
48.♔e2 ♞c2+ 49.♔f1 ♖d2+ 50.♔e2
♖xf3+ 51.♔d1 ♞d2+ 52.♞xd2
♖xd2♞+) 41.♞b1 ♞e4

C) 42.♞g5 ♞c5+ 43.♔f1 ♖e3+
44.♔e1 d2+- 45.♖xd2 (45.♔e2

42.g2+ 46.♖d1 ♖e1+ 47.♗c2 ♗h7+
48.♗c3 hxg5+) 45...♗xg5-+
D) 42.♖g5 ♖g4+

41 ♗xb2+
42 ♖e1

42.♖f1 ♗xa2 43.♖g1 b5 44.♗c3+
♖d4 45.♗e3 ♖xf3 46.♖xf3 ♖xf3+
47.♗xf3 ♗c4+ 48.♗e2 ♗xe2+
49.♗xe2 a5 50.♖b1 ♖b4 51.♖h1
♗g7 52.♖h5 ♗g6 53.♖xb5=

42 ♗a1+
43 ♖e2 ♗xa2+

And this brings about a very unusual middle-game, with White having a Queen, two Rooks and a Knight against Queen, Rook, Knight, Bishop and three pawns. Barring a fluke, (e.g. if Black leaves Rxh6 tricks on) White can only hope to pinch a draw through a perpetual check, or by holding an endgame material down. Black does best to finish the game before an endgame, as although he has three good passed pawns, the Bishop controls only one Queening square, and his King is poorly placed to help them Queen. All Black's pieces are working well, with the minor pieces doing sterling defensive duty as well as playing their part in attack. The white King is dangerously exposed against four good black pieces, but actively placed should White get the Queens off. With a modicum of alertness on his part Black's King is safe where it is for the present. These factors mean Black's best strategy is still to go for the white King.

44 ♖d2

[44.♖e1 tempting the Bishop away from protecting the black pawn on h6 is a recurring option for White, but a bad idea here. 44...♖b4+ 45.♖d1 ♗a1+ 46.♗c2 ♖e3+ 47.♗xe3 ♖c4+ 48.♖d3 ♖c3+ 49.♗e2 ♖xe3+ 50.♗xe3 ♗c3+ 51.♗e4-+]

44 ♖d4

Consistent chess. Black hammers away at the weaknesses, currently the pinned Knight on d2. 44...♖d4+ 45.♗e3 ♗e6+ 46.♖e4 ♖e2 47.♗xe2 (47.♖h4 ♖xh4 48.♖xh4

♖e7 49.♖h5 ♖g3 50.♗c3+ ♗g8 51.♖e5 ♖xe4 52.♗xe4 ♗g4+ 53.♖d3 ♗f3+ 54.♖e3 ♗d1+ 55.♗e4 ♗d7-+) 47...♗xe4+ (47...♖xe4+ 48.♖d1 b5 49.♗c3+-+ ♗h7 50.♗d3 ♗g6 51.♗d7+ ♗h8 52.♗d2 ♗g4+ 53.♖c1 ♖c4+ 54.♖b1 ♖b4+ 55.♖c1 ♖c4+ 56.♖b1 ♗e4+ 57.♗d3 a5 58.♗xe4 ♖xe4 59.♖c3 ♖g7 60.♖c7-+ a4 61.♖f1 b4 62.♖g1 ♖f6 63.♖h1 ♖g5 64.♖d1 ♖e7 65.♖xe7 ♖xe7 66.♖d7-+; 47...♖xe4+) 48.♗xe4 ♖xe4+ 49.♖d3 ♖e7 50.♖h5 and Black ought to win easily.; 44...b5

45 ♗c3

45.♖xh6+? ♖xh6 46.♖xh6+ ♗g7 47.♖h7+ ♗g6-+ 45...♖b4? 46.♖xh6+±; 45...♗h7 46.♖d3 ♖g7 (46...♖e4+ 47.♗f3 ♖g7 48.♗c8 ♗e6 49.♗xe6 ♖xe6 50.♖e4 ♖e7 51.♗f4 ♖d4 52.♗e3 ♖c2+ 53.♖d2 ♖xe4 54.♖xc2 b5 55.♖d7 ♖c4+ 56.♖b3 ♖c3+ 57.♖b4 ♖c4+ 58.♗a5 ♖a4+ 59.♖b6 ♖d4 60.♖xd4 ♖xd4+ 61.♗xa6 b4 62.♖b5 ♖c3 63.♖c4 ♗g6 64.♖g1+ ♗f5 65.♖f1+ ♗g4 66.♖g1+ ♗f3 67.♖h1 ♖d2 68.♖xh6 ♖xh6 69.♗xb4=) 47.♖xd4 ♖xd4+ 48.♖f2 ♗f7+ 49.♖f3 b5 (49...♗xf3+ 50.♗xf3 ♖xf3 51.♗xf3 b6 52.♗e4 ♖f8 53.♖d1 a5 54.♗f5 ♖c5 55.♖d7+ ♗g8 56.♗g6 ♗f8 57.♗xh6 a4 58.♖b7 a3 59.♗g5 ♖d4 60.♖a7 ♖b2 61.♗f4 b5 62.♗e3 b4 63.♖d3 ♖c3 64.♖xa3=) 50.♗d3+ ♗f5 51.♗xf5+ ♖xf5 52.♖c1 a5 53.♖c5 ♖d6 54.♖c6 ♖f8 55.♖d4 a4 56.♖a6 h5 57.♖a5 ♗g6 58.♖xb5 ♖xb5 59.♖xb5 a3=

46 ♖d1 ♖g7
47 ♗b3

47.♗f3 ♗a2 48.♗c3 ♖d8 49.♗c2 ♗a1+ 50.♗c1 ♗a4+-+ 51.♗c2 ♗f4 52.♖c1 ♖e3 53.♖xe3 ♗xe3. It's a slaughter now.; 47.♖e1 ♗d7-+ 48.♗c2 ♖xd2+ 49.♗xd2 ♗a4+ 50.♖c1 ♗a1+ 51.♖c2 ♖d4+ 52.♖d3 ♗a3+ 53.♗c3 ♗xc3+ 54.♗xc3 ♖f3+ 55.♖b3 ♖xe1-+

47 ♗d7
48 ♖1h2 ♖a4
49 ♖c1

49.♗d3 ♖a1+ 50.♗e2 ♗e6+ 51.♗e4 ♖d4+ 52.♗f2 ♗f6+ 53.♖f3

♖a2+ 54.♗g3 ♗d6+ 55.♗g4 ♗d7+ 56.♗g3 ♖f5+ 57.♗f4 ♖a4+-+; 49.♖e1 ♖a1+ 50.♖b1 ♗e7+ 51.♖e2 ♗xe2+ 52.♗xe2 ♖d4+ 53.♖d2 ♖xb3+ 54.♖xb3-+

49 ♖a1+
50 ♖b1 ♖d4

The cleanest kill.

51 ♗d3

51.♗b2 ♗c6+ 52.♖c3 ♖b3+ 53.♗xb3 ♖xc3 winning easily.

51 ♗c8+

0 1

White faces ruinous loss of material. If 52.♖d2 [52.♖b2 ♖e2+ 53.♖b3 ♖c1+ 54.♖b4 a5+ 55.♖b5 ♗c6*; 52.♖d1 ♗g4+ 53.♖d2 ♖a2+ 54.♖e1 ♖xh2 55.♖xh2 ♗g1+ 56.♖d2 ♗xh2+ 57.♖c1 ♗e2-+] 52...♖a2+ 53.♗e3 ♗c1+ 54.♖d2 ♗e1+ 55.♖e2 ♗g1+ 56.♖f2 ♗g5+ 57.♖f4 ♖a3 [Even stronger is 57...♖e6 58.♖hf3 ♖xf4 59.♖xf4 ♖e5-+] 58.♗xa3 ♖c2+ 59.♗e2 ♖xa3-+



[Editor: I think if we had a prize for annotation, there could be only one winner! Joe Watson has provided many "in depth" annotations for which we are very grateful - even though they are an Editor's nightmare to check!! Well done, Joe, and many thanks.

Finally, could Moira and I also express our thanks to Bernard Milligan for being such a helpful and enthusiastic Games Editor. In the old days, we had to set up and check games from various manuscripts, but Bernard has done all this for us since he took over the column! Many thanks, Bernard, for your excellent work!]

Bernard Partridge Memorial - Final

The Final stage of this tournament, to the memory of Scottish CCA Honorary Member, Bernard Partridge, who died in November 1993, is now well underway. The Preliminary stages began on 1st October 1995 with 165 players from 10 North Sea bordering countries, with a rating "ceiling" of 2250. The finalists have progressed since then to an average rating now of 2363! With some results already reported, it will be interesting to see who will now achieve an IM title norm, which will require 7½pts or more.

We wish everyone a successful tournament, with really interesting and enjoyable games.

No	Bernard Partridge Memorial Final			1	2	3	4	5	6	7	8	9	10	11	12	13	Pts
1	E.C. Sowden	(ENG)	2361	◆				½							1	½	
2	G. Voss	(GER)	2296		◆			1					0			½	
3	J.M. Poulsen	(DEN)	2370			◆											
4	M.J. Summers	(BEL)	(2200)				◆										
5	Dr. S.M. Williams	(ENG)	2297	½	0			◆									
6	T. Lang	(GER)	2463						◆		½		0			½	
7	R. Boger	(NOR)	2477							◆						½	
8	Dr. G. Grothe	(GER)	2345						½		◆		½		½	½	
9	L. van Damme	(BEL)	2444									◆			1	½	
10	H. Kunz	(GER)	2403		1				1		½		◆		½	½	
11	T. Hartogh	(GER)	2392											◆		0	
12	R. Woelk	(GER)	2311	0							½	0	½		◆	0	
13	H. Starke	(GER)	2355	½	½				½	½	½	½	½	1	1	◆	

1st North Sea Team Tournament

Board 1 - Tom Thomson				1	2	3	4	5	6	7	8	9	10	11	Pts
1	Liljedahl	E	2200 DEN	◆	½	0	½	½	½	0	1	½	½	½	4½
2	Thomson	T	2414 SCO	½	◆	½	½	0	½	½	1	½	½	1	5½
3	Söderberg	P	2451 SVE	1	½	◆		½	1	1	0	0	½	½	
4	Reschke	H-J	2469 GER	½	½		◆	½	½	½	1	½		1	
5	van Leeuwen	E	2380 BEL	½	1	½	½	◆	½	0	½	½	½	½	5
6	Karlsson	E	2391 ISD	½	½	0	½	½	◆	½	0	0	0	½	3
7	Frostick	C	2466 ENG/A	1	½	0	½	1	½	◆	½	½	½	1	6
8	Barnsley	AR	2416 ENG/B	0	0	1	0	½	1	½	◆	1	½	1	5½
9	Larsen	S-B	2434 NOR	½	½	1	½	½	1	½	0	◆	½	½	5½
10	Oomen	A	2382 NLD	½	½	½		½	1	½	½	½	◆	½	
11	Gilbert	C	2200 FRA	½	0	½	0	½	½	0	0	½	½	◆	3

Board 4 - Jonathan Lennox				1	2	3	4	5	6	7	8	9	10	11	Pts	
1	Somod	PB	2329 DEN	◆	0	0	½	0	0	0	0	0	½	0	½	1½
2	Lennox	CJ	2200 SCO	1	◆	½	½	½	½	0	0	½	½	½	4½	
3	Johansson	K	2271 SVE	1	½	◆	1	1	½	½	½	½	1	1	7½	
4	Boesenberg	E	2392 GER	½	½	0	◆	1	0	0	1	½	1	1	5½	
5	Palmkoeck	W	2378 BEL	1	½	0	0	◆	½	½	0	½	½	½	4	
6	Njordfjord	S	2200 ISD	1	½	½	1	½	◆	0	½		1	1		
7	Coleman	PL	2462 ENG/A	1	1	½	1	½	1	◆	½	½	½	1	7½	
8	Smith	R	2389 ENG/B	1	1	½	0	1	½	½	◆	½	0	1	6	
9	Gullaksen	ET	2377 NOR	½	½	½	½	½	½	½	◆	½	1	1	5½	
10	Schaper	HB	2373 NLD	1	½	0	0	½	0	½	1	0	◆	1	4½	
11	Robeson	C	2255 FRA	½	½	0	0	½	0	0	0	0	0	◆	1½	

Board 2 - George D. Pyrich				1	2	3	4	5	6	7	8	9	10	11	Pts
1	Lauritsen	N	2447 DEN	◆	½	½	½	½	1	1	0	½	1	½	6
2	Pyrich	GD	2372 SCO	½	◆	0	½	½	1	½	½	0	½	0	4
3	Blomstrand	G	2402 SVE	½	1	◆	½	½	1	½	½	½	½	1	6½
4	Rhode	H	2412 GER	½	½	½	◆	½	½	½	½	½	½	½	5
5	Dusart	P	2379 BEL	½	½	½	½	◆		½	½	½	½	1	
6	Elison	K	2278 ISD	0	0	0	½		◆	½				0	
7	Thorn/Lynn	JD	2429 ENG/A	0	½	½	½	½	½	◆	0	0	0	½	5
8	Mukherjee	A	2430 ENG/B	1	½	½	½	½		1	◆	0	1	0	
9	Seres	F	2494 NOR	½	1	½	½	½		1	1	◆	½	1	
10	Vlasweld	WM	2405 NLD	0	½	½	½	½	1	1	0	½	◆	0	4½
11	Tinture	L	2200 FRA	½	1	0	½	0		½	1	0	1	◆	

Board 5 - Raymond Baxter				1	2	3	4	5	6	7	8	9	10	11	Pts
1	Pedersen	HB	2315 DEN	◆	½	½	½	1	½	½	0	1	½	1	6
2	Baxter	RW	2329 SCO	½	◆	½	0	0	1	½	0	½	½		
3	Johansson	C	2254 SVE	½	½	◆	½	0	½	0	½	0	0	½	3
4	Podzielnny	K	2332 GER	½	1	½	◆	½		½	0	1	½		
5	Huybrecht	F	2298 BEL	0	1	1	½	◆	1	½	½	½	0	½	5½
6	Brynjolfsson	I	2364 ISD	½	0	½		0	◆		½	1	0		
7	Fraser	FJL	2433 ENG/A	½	½	1	½	½		◆	½	0	½	1	
8	Lumley	WF	2390 ENG/B	1	1	½	1	½	½	½	◆	1	½	½	7
9	Andresen	T	2398 NOR	0	½	1	0	½	0	1	0	◆	½	½	4
10	Panaman	HJ	2331 NLD	½	½	1	½	1	1	½	½	½	◆	1	7
11	Longueville	T	2200 FRA	0		½	½		0	½	½	0	◆		

Board 3 - Ian Aird				1	2	3	4	5	6	7	8	9	10	11	Pts
1	Hansen	TG	2338 DEN	◆	½	½	½	½	1	1	1	½	½		
2	Aird	I	2332 SCO	½	◆	½	1	½	0	1	½		½	1	
3	Westlund	M	2320 SVE	½	½	◆	1	1	½	1	½	1		½	
4	Skulteti	A	2403 GER	½	0	0	◆	0	0	½	½	½	0	½	2½
5	De Coninck	G	2390 BEL	½	½	0	1	◆	0	0	1	1	0	½	4½
6	Kristjansson	AH	2200 ISD	0	1	½	1	1	◆	1	½	½	½	½	6½
7	Toothill	JA	2401 ENG/A	0	0	0	½	1	0	◆	½	½	½	½	3½
8	Brockbank	HW	2403 ENG/B	0	½	½	½	0	½	½	◆	½			
9	Strand	KW	2447 NOR	½		0	½	0	½	½	½	◆			
10	Reijnen	MJF	2317 NLD	½	½		1	1	½	½			◆	1	
11	Rozier	D	2288 FRA		0	½	½	½	½	½			0	◆	

Board 6 - Iain Mackintosh				1	2	3	4	5	6	7	8	9	10	11	Pts
1	Norrelykke	SGJ	2213 DEN	◆	½	½	0	1	0	½	½	½	0	½	4
2	Mackintosh	I	2295 SCO	½	◆	0		1	0	0	0	0	0	½	
3	Larsson	M	2200 SVE	½	1	◆	0	½	1	½	½	1	½	1	6½
4	Grube	F	2200 GER	1		1	◆	½	½	0	0	½	½		
5	Poppe	M	2339 BEL	0	½			◆	½	0		0			
6	Olafsson	TB	2243 ISD	1	0	0	½	½	◆	0	1	0	½	½	4
7	Tait	JA	2383 ENG/A	½	1	½	½	1	1	◆	½	1	1	1	8
8	Donnelly	M	2365 ENG/B	½	1	½	1		0	½	◆		1	½	
9	Boger	R	2463 NOR	½	1	0	1		1	0		◆	½	1	
10	de Waard	JAM	2450 NLD	1	1	½	½	1	½	0	0	½	◆	½	5½
11	Lavoiser	F	2224 FRA	½	½	0	½		½	0	½	0	½	◆	



INTERNATIONAL CORRESPONDENCE CHESS FEDERATION INDIVIDUAL TOURNAMENTS

Members of the Scottish CCA are eligible to play in ICCF Postal and Email tournaments. These events are structured to encourage participation by CC players of all standards. Members can choose between World and European promotion tournaments ranging upwards from Open Class, Higher class and Master class. Entries to Higher or Master class tournaments for the first time, require evidence of CC playing strength, if a player has not qualified for promotion from either an Open class or Higher class tournament. The following rating groups are for guidance only and do not preclude entry to a different class with the agreement of the SCCA International Secretary:

- O Class (under 1900),
- H Class (1900-2100)
- M Class (over 2100).

Below Master Class, all promotion tournaments are organised in 7-player sections, with 11 players in M-Class sections. You can play simultaneously at any one level until you win promotion and it is possible to interchange between Postal/Email tournaments, e.g. winning a Postal Open Class could be used to play in an Email Higher Class, etc.

New World Cup tournaments begin every 2/3 years. Sections are comprised of 11 players of all strengths. Winners proceed to the Semi-Finals and winners of these qualify for a World Cup Final. The entry fee covers participation in all stages and players may make multiple entries, but only two qualifications to the Semi-Final round are permitted. (A new cycle began earlier this year but the next one is likely to be announced within two years).

Openings thematic tournaments are also available and more details of these are published in the SCCA Magazine, Fernschach, Chess Mail and on the ICCF and SCCA websites.

Master Norm tournaments of 11 players are available for strong players, by both airmail and Email. A fixed ICCF rating of 2300 (2000 for ladies) or non-fixed rating of at least 2350 (2050 for ladies) is normally required, or else (for players not rated by ICCF) a current FIDE-rating of at least 2350 (2050 for ladies). Players who have taken a medal place (1 to 3) in a national championship, (or won a national championship for ladies) can also enter. A player can enter only one postal section and one Email section each calendar year. Section winners, who do not reach the norm result, will instead receive a qualification for a World Championship Semi-Final.

For postal play, the International Numeric notation is normally used and full details of this simple system, along with ICCF Rules, are sent to each new entrant along with the receipt for his/her entry fee. The time limit is 30 days for every 10 moves and one exceeding of the time limit is permitted. A period of 30 days' leave is also allowed each calendar year. To speed progress, air mail stickers should be used to Europe as well as elsewhere as the international rate for postcards is not increased by this service.

Please be aware that some patience is required, as a game can take about 3 years against an opponent from a country with a poor postal service, and silent withdrawal is bad etiquette. It is recommended that players use International CC postcards, these being available along with other postal chess supplies, from Chess and Bridge Suppliers (Scotland). It is also permitted to use Email, by mutual agreement with opponents, if this could be beneficial for speeding up slow games in postal CC events.

Please note that some of the fees (shown on page 33) have been increased as from 1.1.2001 from previous levels.

For Email tournaments, PGN notation (algebraic) is recommended and the rate of play is 10 moves in every 60 days. International Email promotion tournaments are structured in the same way as postal tournaments, ranging upwards from Open class to Higher class and Master class. ICCF Email rules are downloadable from the ICCF website.

A point to be borne in mind in deciding how many games to play, is that, compared with postal, the rate of play via Email is much quicker. Therefore, it is better to play fewer Email games simultaneously but, as these will be completed sooner, you can enter new tournaments more frequently!

A prerequisite for entry via the SCCA to all ICCF events is that the player is and continues to be a full member of the SCCA for the duration of the tournament.

We wish you great enjoyment from your overseas games and making new friends either by post or Email!

An entry form for ICCF tournaments is on page 33 of this magazine.

Web pages to watch!

Information about ICCF events, news and activities are featured on the following WWW sites:-

ICCF

<http://www.iccf.com>

The official and principal site for all news, information and results for international correspondence chess.

The Correspondence Chess Place

<http://www.correspondencechess.com>

This site provides a facility for downloading CC Email and postal games! It also contains the lively TCCMB (message board) where you can read a very diverse range of opinions about CC and connected topics! It hosts other good sites.

Friendly Internationals

[Report by Tom Thomson]

Results since the Autumn Magazine:-

Scotland (1) v Brazil (1) (Email)

Bd 6 I Mackintosh 1-1 F. Sorroche

Scotland (9½) v Cif (Chess in Friendship) (4½)

Bd 1 T. Thomson 1-1 R. Markus

Bd 3 A.P. Borwell 1½-½ J. Mrkvička

Bd 4 A. Dearnley ½-1½ F. Kaden

Bd 8 B. Milligan 2-0 H. Kellerer

Scotland (10½) v Argentina (13½)

Bd 9 A. Armstrong 2-0 P. Gritti

Scotland (8) v Hong Kong (0)

Bd 1 G.D. Pyrich 2-0 G. Turner

Bd 2 A. Dearnley 2-0 Kuo Tso-Chi

Scotland (18) v India (9)

Bd 9 I. Mackintosh 2-0 V.H. Chole

Bd 13 A. Armstrong ½-½ A. Gupta

Scotland (17½) v ASPCC (19½)

Bd 4 G.H. Phillips 1-1 W. Gray

Bd 7 D.R. Cumming 0-1 J. Hopfer

Bd 10 Mrs EA Hartford 1-1 G. Roberts

Bd 13 R. Loughran 0-2 E. Boyle

Scotland (2½) v Australia (5½) (Email)

Bd 1 G.D. Pyrich 1½-½ J. Mackie

Scotland (1) v Wales (1)

Bd 10 A. Armstrong 1-1 N. Griffiths

ICCF INDIVIDUAL TOURNAMENTS



(by Tom Thomson)

There have only been 3 new entries this time, see below:

No	Name	Tourney Class/Players	Tourney Ref	Method of Play
1	N.R. McEwan	World Open 7		Corr
2	N.R. McEwan	Euro Open 7		Corr
3	I.H. Marshall	World Higher 7		Email

Please send your results from Friendly Internationals to Tom Thomson immediately on completion of each game (whether it is a win, draw or loss!).

Tom Thomson,
8 Swallow Crescent,
Buckhaven,
Fife, KY8 1HH,
Tel. 01592-715603

Email: ThomasThomson@btinternet.com



INTERNATIONAL CORRESPONDENCE CHESS FEDERATION

Entry form for Scottish CCA members for ICCF Individual Tournaments

Name _____ Member No. _____ Tel. No. (____) _____

Address _____

Postcode _____ Email address (where applicable) _____

Rating (ICCF, SCCA or OTB) _____ Date entry sent to SCCA _____

Individual Tournaments	Fee	No. of players	World (W) or Europe(E)	Postal (P) or Email (EM)	No of Groups	Amount £
Open Class	£6	7				
Higher Class	£6	7				
Master Class	£8	11				
Master Norm	£18	11				
Thematic *	£8	7 (x2)	World only	Code:		
World Cup	£12	11	World only			
ICCF Badge	£2	n/a	n/a	n/a	n/a	
Total £						

* See Scottish CCA Website (www.scottishcca.co.uk) for Openings details/codes - Postal only

Please send entries (with cheque payable to the "Scottish Correspondence Chess Association") to:
Mr. Tom Thomson, 8 Swallow Crescent, Buckhaven, Fife, KY8 1HH.

ICCF Email Team Tournament Final

No	Board 1 : Tom Craig	1	2	3	4	5	6	7	8	9	Pts
1	Felber, R Austria-2 2369	◆	½	0	1	½	0	0	½	½	3
2	Esses, M CAPA2/ARG 2350	½	◆	½	1	1	½	½	1	½	5½
3	Leko, P Szeged/HUN 2694	1	½	◆	½	½	½	0	½		
4	Alvarez Villar, H CITEFA/ARG 2321	0	0	½	◆	½	½	½	½	0	2½
5	de Groot, A NBC-1/NLD 2454	½	0	½	½	◆	1	0	1	½	4
6	Craig, TJ Scotland-A 2425	1	½	½	½	0	◆	½	½	½	4
7	Pankratov, V Russia-1 2500	1	½	1	½	1	½	◆	1	1	6½
8	Wang, Mong Lin Singapore 2511	½	0		½	0	½	0	◆	½	
9	Brueckner, J Rochade/GER 2442	½	½	½	1	½	½	0	½	◆	4

No	Board 3 : Doug Finnie	1	2	3	4	5	6	7	8	9	Pts
1	Schmidt, W Austria-2 2308	◆	½	½	1	0	0	0	0	½	2½
2	Frank, M CAPA2/ARG 2315	½	◆	½	½	0	0	0	½	0	2
3	Berecz, A Szeged/HUN 2405	½	½	◆	1	½	½	0	½	½	4
4	Fernandez, JH CITEFA/ARG 2317	0	½	0	◆	½	½	0	0	0	1½
5	van Wieringen, C NBC-1/NLD 2411	1	1	½	½	◆	½	½	½	½	5
6	Finnie, DS Scotland-A 2377	1	1	½	½	½	◆	½	½	1	5½
7	Romanov, S Russia-1 2529	1	1	1	1	½	½	◆	½	½	6
8	Tay, J Singapore 2200	1	½	½	1	½	½	½	◆	½	5
9	Wrba, K Rochade/GER 2423	½	1	½	1	½	0	½	½	◆	4½

No	Board 2 : Philip Giulian	1	2	3	4	5	6	7	8	9	Pts
1	Patocka, F Austria-2 2371	◆	0	½	½	1	0	½	1	½	4
2	Taboada, P CAPA2/ARG 2441	1	◆	½	0	1	0	0	1	0	3½
3	Gyimesi, Z Szeged/HUN 2529	½	½	◆	1	1	0	½	½	0	4
4	Gimenez, DM CITEFA/ARG 2385	½	1	0	◆	1	1	0	½	½	4½
5	Eveleens, W NBC-1/NLD 2411	0	0	0	0	◆	0	0	0	0	0
6	Giulian, PM Scotland-A 2394	1	1	1	0	1	◆	½	1	½	6
7	Pankratov, A Russia-1 2551	½	1	½	1	1	½	◆	½		
8	Kivisto, M Singapore 2296	0	0	½	½	1	0	½	◆	½	
9	Moessle, H Rochade/GER 2417	½	1	1	½	1	½	½	◆		

No	Board 4 : George Pyrich	1	2	3	4	5	6	7	8	9	Pts
1	Haika, G Austria-2 2200	◆	½	1	1	½	1	0	1	0	5
2	Domancich, E CAPA2/ARG 2290	½	◆	½	½	0	½	0	1	½	3½
3	Blazsik, Z Szeged/HUN 2245	0	½	◆	½	½	0	1	0		
4	Lamas, DG CITEFA/ARG 2200	0	½	½	◆	½	½	0	1	½	3½
5	Pommerel, W NBC-1/NLD 2394	½	1	½	½	◆	½	½	1	½	5
6	Pyrich, GD Scotland-A 2377	0	½		½	½	◆	0	1	½	
7	Dolgov, IM Russia-1 2276	1	1	1	1	½	1	◆	1	1	7½
8	Livelo, JD Singapore 2200	0	0	0	0	0	0	0	◆	0	0
9	Schreiner, R Rochade/GER 2200	1	½	1	½	½	½	0	1	◆	5

1. Russia-1 25/31 (1) 81% (Winners!); 2= Scotland-A 18½/31 (1) 60%; Rochade/GER 18½/31 (1) 60%;
 4. Szeged/HUN 14/30 (2) 46.7%; 5. Austria-2 14½/32 45.3%; 6. CAPA2/ARG 14½/32 (0) 45%;
 7. NBC-1/NLD 14/32 (0) 43.8%; 8. CITEFA/ARG 12/32 (0) 38%; 9. Singapore 10/31 (1) 32.2%

It's neck and neck for the runner-up and third places, with one game each remaining!

ICCF THEMATIC TOURNAMENTS

Details of Thematic tournaments coming up in the near future - there must be something to your taste!

Sections of 5-7 players, two games against each opponent. Top two players qualify for each Final.

Entries by 01/03/2001, start on 01/05/2001

5 Trompowski Opening, A45
1 d4 Nf6 2 Bg5 Ne4

6 Sicilian Defence - Moscow Variation, B51
1 e4 c5 2 Nf3 d6 3 Bb5

Entries by 15/04/2001, start on 15/06/2001

7 Bishop's Opening, C23
1 e4 e5 2 Bc4 Bc5 3 c3 d5

8 Dutch Defence - Korchnoi Variation, A80
1 d4 f5 2 h3 Nf6 3 g4 fxd4 4 hxd4 Nxd4 5 e5

Entries by 01/06/2001, start on 15/08/2001

9 Marshall Attack, C89
1 e4 e5 Nf3 Nc6 3 Bb5 a6 4 Ba4 Nf6 5 0-0 Be7
6 Re1 b5 7 Bb3 0-0 8 c3 d5

Entry Fee is £6 per group (payable to Scottish CCA) to :-

Mr. Tom Thomson,
8 Swallow Crescent,
Buckhaven,
Fife, KY8 1HH.

Scottish Chess Association

... promoting chess throughout Scotland

Individual membership for 1 year costs only £24.50

Benefits

- * Scottish Chess Magazine 6 issues per year
- * SCA Website: www.users.globalnet.co.uk/~sca/
- * Reduced entry fees at most registered congresses
- * 5% discount on purchases from Chess Suppliers (Scotland) and Chess Direct Ltd
- * SCA Grand Prix
- * Entitlement to enter Scottish Chess Championships
- * Personalised current or previous year grading print-out free on request
- * SCA chess calendar - comprehensive listing of tournaments around Scotland
- * SCA membership card.

New memberships, renewals and enquiries, please contact:

Sam Collins, SCA Customer Services Director,
PO Box 67, 15 Hope Street, Glasgow G2 6AQ, Tel/Fax
0141-221-6464, Email: sca@btinternet.com

Most major credit and debit cards accepted

1st Email Olympiad Preliminaries - Section 2

Board 1 - Tom Craig		1	2	3	4	5	6	7	8	9	10	11	12
1	Mercadal Benjam ESP 2514	◆ ½								½			
2	Jorgensen AB DEN 2520	½ ◆											
3	Ohtake S JPN 2200			◆						1			
4	Alonso Garcia R CUB 2388				◆								
5	Dothan Y ISL 2490					◆							
6	Andriulaitis V LIT 2603						◆						
7	Sirota A AUS 2384							◆ 0					
8	Jedrzejewski M POL 2465							1 ◆ ½					
9	Teichmeister S OST 2604	½	0					½ ◆					
10	Halldorsson J ISD 2482									◆		½	
11	Craig TJ SCO 2430											◆	
12	Salcaenu V ROM 2512												◆

Board 4 - Doug Finnie		1	2	3	4	5	6	7	8	9	10	11	12
1	Lanz Calavia JM ESP 2390	◆ ½											
2	Christiansen T DEN 2400	½ ◆		1 ½				½ ½ ½ ½ ½					
3	Yamaguchi M JPN 2268			◆									
4	Salcedo Mederos P CUB 2364				0	◆					1 0		
5	Yefremov Y ISL 2461	½				◆							0
6	Grabliauskas V LIT 2465						◆ ½					½	
7	Depasquale C AUS 2309						½ ◆	½ ½ 1 ½ ½					
8	Marcinkiewicz J POL 2428	½					½ ◆ ½	1 ½ ½					
9	Riemer W OST 2417	½					½ ½ ◆	½ ½					½
10	Halldorsson G ISD 2354	½			0			0 0 ½ ◆	½				
11	Finnie DS SCO 2391	½		1 1	½ ½ ½						½ ◆		
12	Moise O ROM 2200	½						½ ½ ½					◆

Board 2 - Joe Watson		1	2	3	4	5	6	7	8	9	10	11	12
1	Cutillas Ripoll P ESP 2513	◆											
2	Kramer S DEN 2453		◆										
3	Onoda H JPN 2412			◆									
4	Bueno Perez L CUB 2270				◆								
5	Poliak Y ISL 2490					◆							
6	Kupsys A LIT 2551						◆						
7	Runting T AUS 2411							◆					
8	Szczepankiewicz D POL 2415								◆ ½		½		
9	Kovacs L OST 2511								½ ◆				
10	Gunnlaugsson G ISD 2434										◆		
11	Watson J SCO 2398								½			◆	
12	Breahna R ROM 2365												◆

Board 5 - George Pyrich		1	2	3	4	5	6	7	8	9	10	11	12
1	Rodriguez Former J ESP 2384	◆	0	0					½				
2	Hansen C DEN 2317		◆										
3	Sakai K JPN 2200	1		◆ ½	½				½		0		
4	Vega Palma M CUB 2275			½ ◆ ½					0 0				
5	Rozenberg D ISL 2432	1		½ ◆					½			1	
6	Zagorskis D LIT 2467			½			◆		½			½	
7	Morris G AUS 2343							◆					
8	Jankowicz R POL 2357								1 ½ ½	◆ 1		1	
9	Grabner H OST 2390	½		½ 1					0	◆			
10	Bjornsson T ISD 2224											◆	
11	Pyrich GD SCO 2390			1	0 ½	0						◆ ½	
12	Hagelstein D ROM 2200												½ ◆

Board 3 - Phil Giulian		1	2	3	4	5	6	7	8	9	10	11	12
1	Cruzado Duenas C ESP 2464	◆						½					
2	May HW DEN 2447		◆ 1 ½					½			1		
3	Terada S JPN 2369	0	◆ ½					½			0		
4	Rodriguez Abreu E CUB 2431	½ ½	◆ ½	½				½			0		
5	Birarov V ISL 2485			½ ◆									
6	Novikovas V LIT 2512					◆							
7	Fitzpatrick S AUS 2372	½ ½ ½ ½					◆		½ ½				
8	Kaczorowski P POL 2401							◆					
9	Wakolbinger W OST 2464							½ ◆			½		
10	Gardarsson HW ISD 2526							½		◆ ½			
11	Giulian PM SCO 2385	0 1 1							½ ½	◆			
12	Grosu D ROM 2200												◆

Board 6 - Bernard Milligan		1	2	3	4	5	6	7	8	9	10	11	12
1	BocanegraMoreno R ESP 2489	◆						½ ½ ½	1 1				
2	Lauriidsen J DEN 2200		◆								1		
3	Kagiyama N JPN 2200			◆					½ 0 ½				
4	Perez Cruz FH CUB 2200				◆								
5	Surin M ISL 2294					◆		½					
6	Rocius M LIT 2447						◆				1		
7	Fenwick JP AUS 2200	½	½	½				◆ ½					
8	Buczinski H POL 2311	½	1					½ ◆ ½ ½					
9	Felber R OST 2375	½	½						½ ◆ ½				
10	Olafsson T ISD 2231	0 0					0	½ ½	◆				
11	Milligan B SCO 2381	0										◆	
12	Nacu M ROM 2200												◆

Participating countries - 1st Email Olympiad

	Section 1
1	Russia
2	Mexico
3	Netherlands
4	India
5	Sweden
6	Switzerland
7	Argentina
8	Kenya
9	Slovenia
10	Slovakia
11	Bulgaria
12	Yugoslavia

	Section 2
	Spain
	Denmark
	Japan
	Cuba
	Israel
	Lithuania
	Australia
	Poland
	Austria
	Iceland
	Scotland
	Romania

	Section 3
	Portugal
	Croatia
	Finland
	Brazil
	Peru
	Canada
	Hungary
	South Africa
	France
	Greece
	England
	Latvia

	Section 4
	Belgium
	Czech Republic
	United States
	Estonia
	Kazakhstan
	Italy
	Turkey
	Guatemala
	Germany
	Ireland
	Norway
	Isolated Players

Top three teams from each section will qualify for the Final

ICCF OLYMPIAD XII FINAL

Board 1 - David A. Kilgour				1	2	3	4	5	6	7	8	9	10	11	12	Pts
1	Portilho	GF	2430 BRS	◆	½		½		½	0			½			
2	Zapletal	J IM	2525 CZE	½	◆		0	½		½	½		½			
3	Al-Thani	MK IM	2630 QTR			◆	0		½	½						
4	Vitomskis	J IM	2590 LAT	½	1	1	◆	½	½	½	½	½	½	1	½	7
5	Neumann	J IM	2695 GER		½		½	◆	1	0		½	½	1		
6	Maliangkay	RJ GM	2605 NLD	½		½	½	0	◆	½	0	½	½	1		
7	Hamarat	T GM	2595 OST	1	½	½	½	1	½	◆	½	½	½	1	½	
8	Andersson	U (GM)	(2635) SVE		½		½		1	½	◆	½	½	1		
9	Knobel	R	2545 SWZ				½	½	½	½	◆				1	
10	Kilgour	DA GM	2610 SCO	½	½		½	½	½		½		◆	1		
11	Greig	G	2470 CAN				0	0	0	½	0		0	◆		
12	Normantas	V GM	2625 LIT				½			½	0				◆	

Board 2 - Colin A. McNab				1	2	3	4	5	6	7	8	9	10	11	12	Pts
1	de Cresce	SH IM	2475 BRS	◆		1	½	½		1	½	½				
2	Mraz	M IM	2525 CZE		◆	1		0	½	½	1	½	1		½	
3	Al-Modaikh	M	2085 QTR	0	0	◆	0	0	0	0	0	0	0	0	0	0
4	Saksis	J IM	2525 LAT	½		1	◆	½	½	0	1	1	½	1	½	
5	Nimtz	M IM	2605 GER	½	1	1	½	◆	0	½	1	1	½	1		
6	Gouw	C-P IM	2460 NLD		½	1	½	1	◆	1		½	1		0	
7	Neuschmied	S	2540 OST	0	½	1	1	½	0	◆	½	1	½	1	½	6½
8	Carlsson	I	2500 SVE	½	0	1	0	0		½	◆	1	1	1	½	
9	Rüfenacht	M GM	2555 SWZ	½	½	1	0	0	½	0	0	◆	½	1	0	4
10	McNab	CA IM	2505 SCO		0	1	½	½	0	½	0	½	◆		½	
11	Deidun Sr.	J	2435 CAN			1	0	0		0	0	0		◆		
12	Gefenas	V IM	2575 LIT		½	1	½		1	½	½	1	½		◆	

Board 3 - Philip M. Giulian				1	2	3	4	5	6	7	8	9	10	11	12	Pts
1	Felicio	C IM	2435 BRS	◆	½		½	0				½			½	
2	Sevecek	R IM	2575 CZE	½	◆	½	½	½	1		½	½			½	
3	Shardarevian	M	2200 QTR		½	◆	½	0					0	1		
4	Strautins	U IM	2515 LAT	½	½	½	◆	½	1		½	½		1	½	
5	Anton	V-M GM	2625 GER	1	½	1	½	◆	1		1	1	1	½	½	
6	v.d. Plaasche	B	2520 NLD		0		0	0	◆	½	½	0	½	0	0	
7	Wohlfahrt	H	2530 OST						½	◆		0				
8	Johansson	I IM	2530 SVE		½		½	0	½		◆	0	½	0	½	
9	Bhend	E IM	2490 SWZ	½	½		½	0	1	1	1	◆	½	½	½	
10	Giulian	PM IM	2445 SCO			1		0	½		½	½	◆	1	½	
11	Demian	E	2390 CAN			0	0	½	1		1	½	0	◆	½	
12	Rumiancevas	B GM	2515 LIT	½	½		½	½	1		½	½	½	½	◆	

Board 4 - George D. Pyrich				1	2	3	4	5	6	7	8	9	10	11	12	Pts
1	Joao	N	2485 BRS	◆		½				0		½	½	½		
2	Danek	L IM	2495 CZE		◆		½		½	0	1		1			
3	Mousa	EAH	2200 QTR	½		◆	½			½		0		1		
4	Dauga	Z IM	2500 LAT		½	½	◆	0		0		1	½	1	0	
5	Kreuzer	M GM	2615 GER				1	◆	1	1			½	1		
6	Nienhuis	K IM	2410 NLD		½			0	◆	0	½	0	½	½	0	
7	Teichmeister	S IM	2515 OST	1	1	½	1	0	1	◆	1	½	½	1	0	7½
8	Holmberg	R IM	2560 SVE		0				½	0	◆	0	½	½	0	
9	Issler	C IM	2555 SWZ	½		1	0		1	½	1	◆	1	1	1	
10	Pyrich	GD IM	2375 SCO	½	0		½	½	½	½	½	0	◆	1	½	
11	Cody	PC	2350 CAN	½		0	0	0	½	0	½	0	0	◆	0	
12	Sutkus	R GM	2535 LIT				1		1	1	1	0	½	1	◆	

ICCF OLYMPIAD XII FINAL contd

Board 5 - Tom Craig				1	2	3	4	5	6	7	8	9	10	11	12	Pts	
1	Amorim	GS	2430	BRS	◆	½	1	½			½	½	½	½	0		
2	Teichmann	C IM	2450	CZE	½	◆	1	0	0	½	½	½	½	1	½	½	5½
3	Al-Khateeb	A	2505	QTR	0	0	◆	0	0	0	0	½	0	0	0	0	½
4	Strautins	V IM	2465	LAT	½	1	1	◆	½	½	1	½	1		½	½	
5	Busemann	S GM	2585	GER		1	1	½	◆	1	1	½	½	1	½	1	
6	van Perlo	G GM	2440	NLD		½	1	½	0	◆	½	½	½	1	1	½	
7	Mayr	K IM	2465	OST	½	½	1	0	0	½	◆	0	½	1	½	0	4½
8	Hjelm	N	2375	SVE	½	½	½	½	½	½	1	◆	½	1	1	½	7
9	Klügel	J-U	2535	SWZ	½	½	1	0	½	½	½	½	◆	½	½	½	5½
10	Craig	TJ	2385	SCO	½	0	1		0	0	0	0	½	◆	½	0	
11	Mrugala	A	2335	CAN	1	½	1	½	½	0	½	0	½	½	◆	0	5
12	Slekys	E	2350	LIT		½	1	½	0	½	1	½	½	1	1	◆	

Board 6 - Joe Watson				1	2	3	4	5	6	7	8	9	10	11	12	Pts	
1	Barata	HAG	2285	BRS	◆	½	1	½	0	½	½	½	½	0	1	½	5½
2	Pribyl	J	2420	CZE	½	◆	1	0	0	1	0	½	½	1	1	½	6
3	Al-Hitmi	MM	2200	QTR	0	0	◆	0	0	0	½	0	½	½	0	0	1½
4	Kazoks	A IM	2415	LAT	½	1	1	◆	½	½	½	½	½	0	1		
5	Maeder	K-H GM	2575	GER	1	1	1	½	◆	1	½	1	1	0	1		
6	Frederiks	R	2505	NLD	½	0	1	½	0	◆	0	0	0	0	1	0	3
7	Thannhauser	F	2465	OST	½	1	½	½	½	1	◆	½	½	½	1	½	7
8	Andersson	M	2290	SVE	½	½	1	½	0	1	½	◆	½	1		½	
9	Giertz	N IM	2325	SWZ	½	½	½	½	0	1	½	½	◆	0	1	0	5
10	Watson	J IM	2425	SCO	1	0	½	1	1	1	½	0	1	◆	1	½	7½
11	Leskowsky	Z IM	2225	CAN	0	0	1	0	0	0	0		0	0	◆	0	
12	Sutkus	V	2280	LIT	½	½	1			1	½	½	1	½	1	◆	

	Team	1	2	3	4	5	6	7	8	9	10	11	12	P	R	%	Pos
1	BRAZIL BRS	◆	2	3½	2½	½	1	2	1½	2½	1½	1½	1	19½	+26	49	8 th
2	CZECH REP CZE	2	◆	3½	1	1	3½	1½	4	2	4½	1½	2	26½	+17	54	5 th
3	QATAR QTR	½	½	◆	1	0	½	1½	½	½	½	2	0	7½	+20	16	12 th
4	LATVIA LAT	2½	4	5	◆	2½	3	2	3	4½	1½	5½	2	35½	+8	61	3 rd
5	GERMANY GER	2½	4	4	3½	◆	5	3	3½	4	3½	5	1½	39½	+14	76	1 st
6	NETHERLANDS NLD	1	1½	3½	2	1	◆	2½	1½	1½	3½	3½	½	22	+11	40	10 th
7	AUSTRIA OST	3	3½	3½	3	2	3½	◆	2½	3	2½	4	1½	32	+10	57	4 th
8	SWEDEN SVE	1½	2	2½	2	½	3½	2½	◆	2½	4½	3½	2	27	+13	51	7 th
9	SWITZERLAND SWZ	2½	2	3½	1½	1	4½	3	3½	◆	2½	4	3	31	+8	53	6 th
10	SCOTLAND SCO	2½	½	3½	2½	2½	2½	1½	1½	2½	◆	4½	2	26	+12	48	9 th
11	CANADA CAN	1½	½	3	½	1	1½	1	1½	1	½	◆	½	12½	+15	25	11 th
12	LITHUANIA LIT	1	2	3	3	½	4½	3½	3	3	3	3½	◆	30	+20	65	2 nd



ICCF OLYMPIAD XIII PRELIMINARIES

Board 1 - D.A. Kilgour				1	2	3	4	5	6	7	8	9	10	11	12	13	Pts
1	Dronov	A	2200 RUS	◆	1		1	½	½				1	0	1	0	
2	Camilleri	H	2340 MLT	0	◆		0	0	0	0		0	0	½	½	0	
3	Fabri	F IM	2500 HUN		1	◆		0		½				½		1	
4	De Mauro	J IM	2520 USA	0	1		◆			½		½		1		1	
5	Mooij	W IM	2505 NLD	½	1	1		◆	½	½	½	½	1	½	½		
6	Ponelis	A	2315 RSA					½	◆		½		½	½			
7	Krivonosovs	V	2475 LAT	½	1	½	½	½		◆	½	0	½	½	1		
8	Jovcic	M GM	2455 YUG					½	½	½	◆	½	½	½		½	
9	Lecroq	M IM	2570 FRA		1		½	½		1	½	◆	1	½	1	½	
10	Davila	M	2200 URU	0				0	½	½	½	0	◆	½	½	½	
11	Halldorsson	J A	2475 ISD	1	1	½	0	½	½	½	½	½	½	◆	½	½	6½
12	Kilgour	D A GM	2610 SCO	0	½	½		½		0		0	½	½	◆	½	
13	Volchok	A S GM	2605 UKR	1	1		0				½	½	½	½	½	◆	

Board 2 - A.P. Borwell				1	2	3	4	5	6	7	8	9	10	11	12	13	Pts
1	Makarov	A	2535 RUS	◆	1			1	1		½		½	½		1	
2	Camilleri	S	2275 MLT	0	◆			½	½	0			½	½		0	
3	Mihalkó	J	2530 HUN			◆				1							
4	Edwards	J	2550 USA				◆	½				½					
5	Plomp	M	2440 NLD	0	½		½	◆		1	1	½	1	1			
6	Knol	D	2285 RSA	0	½				◆		0					½	
7	Batakovs	O IM	2460 LAT	1		0		0		◆	0	0		1	½		
8	Milovanovic	M IM	2430 YUG	½							◆						
9	Boissel	B	2630 FRA				½	0	1	1		◆	1	½	1	½	
10	Ruzo	D	2200 URU	½	½			½		1		0	◆			½	
11	Kárason	A O IM	2460 ISD	½	½			0				½		◆	1	0	
12	Borwell	A P IM	2370 SCO					0	0	0	0	0	0	0	◆	0	
13	Kamenets	A V IM	2540 UKR	0	1				½	½		½	½	1	1	◆	

Board 3 - S.R. Gillam				1	2	3	4	5	6	7	8	9	10	11	12	13	Pts
1	Pinkovetsky	S IM	2380 RUS	◆	1	½	½	½	1	1		½	1	½	1		
2	Vincenti	D C	2200 MLT	0	◆	½		0		1	½			0	½	0	
3	Janosi	E IM	2415 HUN	½	½	◆	½	½	1	½		1	1	½	1	½	
4	Kubach	G IM	2510 USA	½	½		◆	1	½	1		½	1		½	½	
5	Pillhock	D	2495 NLD	½	1	½	0	◆	1	1		1	1	½	1	½	
6	Knipe	J	2200 RSA	0		0	½	0	◆	1		1			0	0	
7	Viksna	T	2470 LAT	0	0	½	0	0	0	◆		1	½	0	½	½	
8	Konjevic	D	2470 YUG		½						◆	½					
9	Herb	P	2540 FRA	½		0	½	0	0	0	½	◆	1	0	½	0	
10	Betancurt	J	2200 URU	0		0	0	0		½		0	◆	½		0	
11	Pálsson	J A IM	2425 ISD	½	1	½		½		1		1	½	◆	½	½	
12	Gillam	S R	2385 SCO	0	½	0	½	0	1	½		½		½	◆		
13	Lepikhov	A G IM	2575 UKR		1	½	½	½	1	½		1	1	½		◆	

Board 4 - T. Thomson				1	2	3	4	5	6	7	8	9	10	11	12	13	Pts
1	Shemagonov	V	2320 RUS	◆					1	½		½	½				
2	Sammut	R	2185 MLT		◆		0		1	0		0		1	½		
3	Timár	Z	2425 HUN			◆	½	½	1	½	½	½	½	½	½	½	
4	Maillard	B IM	2470 USA		1	½	◆		1	½		0			½		
5	van Egmond	R IM	2430 NLD			½		◆	1	½	½	0		½	½	0	
6	Terblanche	D J	2150 RSA	0	0	0	0	0	◆	0		0		0	½	0	
7	Volaks	B	2465 LAT	½	1	½	½	½	1	◆	½	0		1	½	½	
8	Mirkovic	S	2200 YUG			½		½		½	◆	0					
9	Léotard	C	2575 FRA	½	1	½	1	1	1	1	1	◆	1	1	½	½	10
10	Luzardo	J	2315 URU	½		½						0	◆		0		
11	Vigfússon	V	2395 ISD		0	½		½	1	0		0		◆	0		
12	Thomson	T	2270 SCO		½	½	½	½	½	½		½	1	1	◆	½	
13	Kashljuk	V I	2520 UKR			½		1	1	½		½			½	◆	

ICCF OLYMPIAD XIII PRELIMINARIES contd

Board 5 - G.R. Sprott				1	2	3	4	5	6	7	8	9	10	11	12	13	Pts	
1	Khromov	S	2440	RUS	◆	1	1	1		1	½		0	1		1	½	
2	Grillage	A	2200	MLT	0	◆	0	0	½	0	0	0	0	0	0	0	0	½
3	Keszi, J / Soreghy		2430	HUN	0	1	◆		0		0		0	1		0		
4	Timm	J	2535	USA	0	1		◆	1		½			1	1	1		
5	Sprenger	E IM	2445	NLD		½	1	0	◆	1	0	½	0	1	½	½		
6	Benade	J T	2200	RSA	0	1			0	◆	0	0		1		0		
7	Gaujens	A	2395	LAT	½	1	1	½	1	1	◆	½	0	1	1	1	1	9½
8	Somborski	N	2435	YUG		1			½	1	½	◆	½	1		½		
9	Vinot	S IM	2510	FRA	1	1	1		1		1	½	◆	1	½	½		
10	Berrutti	G	2200	URU	0	1	0	0	0	0	0	0	0	◆	0	½	0	1½
11	Elison	K	2240	ISD		1		0	½		0		½	1	◆	½		
12	Sprott	G R	2285	SCO	0	1	1	0	½	1	0	½	½	½	½	◆	1	6½
13	Kuznetsov	S IM	2505	UKR	½	1					0			1		0	◆	

Board 6 - D. Neil				1	2	3	4	5	6	7	8	9	10	11	12	13	Pts
1	Lyukmanov	V	2290	RUS	◆	1	0	1	½	1		0		1	1		
2	Richards	J	2200	MLT	0	◆	0		0	1	0		0	1	0	0	
3	Dobsa	S	2340	HUN	1	1	◆		0	1	½	½	0	1		0	
4	Fleetwood	D	2495	USA	0			◆	0	1	½		½	1		1	
5	vd Langenberg	C	2475	NLD	½	1	1	1	◆	1	½		½	1	½	1	½
6	van Greuning	T	2200	RSA	0	0	0	0	0	◆	0	0	0	0	0	0	0
7	Salminš	G	2330	LAT		1	½	½	½	1	◆		½	1	½		½
8	Erdeljan	M	2410	YUG	1		½			1		◆					
9	Spitz	P	2510	FRA		1	1	½	½	1	½		◆	1		0	
10	Ramini	E	2030	URU	0	0	0	0	0	1	0		0	◆	0	0	0
11	Gunnlaugsson	G	2335	ISD	0	1			½	1	½			1	◆	0	
12	Neil	D	2200	SCO		1	1	0	0	1			1	1	1	◆	
13	Terelya	I M	2475	UKR					½	1	½			1			◆

Section 4 Teams

	Team	1	2	3	4	5	6	7	8	9	10	11	12	13	P	R	%	Pos	
1	RUSSIA	RUS	◆	5	1½	3½	2½	5	2½	½	1	5	2	3	1½	33	+26	72	1 st
2	MALTA	MLT	0	◆	½	0	1	2½	1	½	0	1½	1½	1½	0	10	+21	20	12 th
3	HUNGARY	HUN	1½	3½	◆	1	1	3	3	1	1½	3½	1½	2	1	23½	+29	55	8 th
4	USA	USA	½	3	1	◆	2½	2½	3	0	2	3	2	3	1½	24	+35	65	3 rd
5	NETHERLANDS	NLD	1½	4	4	1½	◆	4½	3½	1½	3	4½	3½	4½	1	37	+14	64	4 th
6	SOUTH AFRICA	RSA	0	1½	0	½	½	◆	1	½	1	1½	½	½	½	8	+27	18	13 th
7	LATVIA	LAT	1½	5	3	2	2½	3	◆	1½	1½	3	3	4	3	33	+12	55	7 th
8	YUGOSLAVIA	YUG	1½	1½	1	0	1½	2½	1½	◆	1½	1½	½	½	½	14	+48	58	6 th
9	FRANCE	FRA	2	4	2½	3	3	3	4½	2½	◆	6	2½	3½	1½	38	+15	67	2 nd
10	URUGUAY	URU	1	1½	½	0	½	1½	2	½	0	◆	1	1	1	10½	+22	21	11 th
11	ICELAND	ISD	2	4½	1½	0	2½	2½	2	½	2½	3	◆	2½	1	24½	+24	51	9 th
12	SCOTLAND	SCO	0	3½	3	1	1½	3½	1	½	2½	3	3½	◆	2	25	+19	47	10 th
13	UKRAINE	UKR	1½	4	1	½	2	3½	2	½	2½	4	2	2	◆	25½	+32	64	5 th

Reg Gillman Memorial Tournament - Section "D"

	Player	1	2	3	4	5	6	7	8	9	10	11	12	13	14	15	Pts
1	G. Quattrocchi	ITA	◆	½	0	0	0	1	0	½	½	1	1	1	½	½	7
2	P. Berclaz	SWZ	½	◆	½	0	0	1	½	1	½	½	1	1	1	½	9
3	N.R. Anil Kumar	IND	1	½	◆	1	½	1	½	0	1	½	1	1	1	½	10½
4	I. Simonsen	BRS	1	1	0	◆	0		½		½	1	½	1	½		6½(3)
5	D.S. Finnie	SCO	1	1	½	1	◆	½	½	0	1	1	½	1	1	1	11
6	F.P. Foldvary	WLS	0	0	0		½	◆	0	0	1	1		½	½	2	5(2)
7	A. Gaujens	LAT	1	½	½	½	½	1	◆	1	½	1	1	½	1	½	10½
8	A. Mrugala	CAN	½	0	1		1	1	0	◆	1	1	1	1	½	½	9½(1)
9	K. Prabhakar	IND	½	½	0	½	0	0	½	0	◆	1	0	1	½	0	4½(1)
10	R.J. Dive	NZD	0	½	½	0	0	0	0	0	◆	½	½	½	0	0	2½
11	J.A.M. de Waard	NLD	0	0	0	½	½		0	0	1	½	◆	½	½	½	5(1)
12	J.C. Lawton	ENG	0	0	0	0	0	½	½	0	0	½	½	◆	½	0	2½
13	W.F. Lumley	ENG	½	0	0	½	0	½	0	½	½	½	½	◆	0	½	4½
14	O. Uralde	ARG	½	½	0	½	0	0	0	½	1	1	½	1	1	◆	7
15	P. Kaczorowski	POL	½	0	½		0	½	½	0	1	1	0	1	½	½	5(2)

VI EUROPEAN TEAM CHAMPIONSHIP PRELIMINARIES - SECTION 1

No	BOARD 1 - C.A. McNAB	1	2	3	4	5	6	7	8	9	10	11	Pts
1	Khlusevich, S.O. GM RUS 2630	◆											
2	Haugen, A. IM NOR 2527	◆			½			1	1	½	1		
3	Taylor, W.D. IRL 2437		◆		½	0		½					
4	Krivic, D. CRO 2475			◆			1				½		
5	Mercadel Benejam IM ESP 2504	½	½	◆				1	½		0		
6	Vesely, P. SLK 2553			1	0	◆		1					
7	Kulling, W. POL 2408						◆		½				
8	Christoffel, M. SWZ 2404	0	½		0	0	◆	½	0	½			
9	McNab, C.A. SCO 2523	0			½	½	½	◆					
10	Rauduvė, A. LIT 2542	½						1		◆	0		
11	Österman, G. GM FIN 2554	0		½	1			½		1	◆		

No	BOARD 2 - J. WATSON	1	2	3	4	5	6	7	8	9	10	11	Pts
1	Donskikh, Y.F. RUS 2490	◆	1		½	½		½	½				
2	Sande, Ø. IM NOR 2494	0	◆				0	½	1	½			
3	O'Siochru, O.R. IRL: 2381			◆		½	½						
4	Krečak, Z. CRO 2436				◆							0	
5	Garcia Corada, P. IM ESP 2477	½	½		◆	½		½					
6	Zabor, N. SLK 2481	½	1	½		½	◆					½	
7	Filutowski, R. POL 2427							◆	0		½		
8	Walker, G. SWZ 2444	½	½			½		1	◆				
9	Watson, J. SCO 2436			0						◆	0		
10	Agejevas, A. IM LIT 2455	½	½					½		1	◆	0	
11	Oikamo, FIN 2452				1		½				1	◆	

No	BOARD 3 - T.J. CRAIG	1	2	3	4	5	6	7	8	9	10	11	Pts
1	Yamaliev, V.U. RUS 2458	◆		½	1	0						½	
2	Rørsgaard, J. NOR 2493		◆	½		½			½	½	1		
3	Houston, D.A. IRL 2243	½	½	◆					½	0	1	½	
4	Ljubičić, A. CRO 2418	0			◆				½	½		½	
5	Martin Clemente, J. ESP 2561	1	½			◆				1	½	½	
6	Nagy, M. SLK 2477						◆		1				
7	Mościcki, Z. IM POL 2376							◆				½	
8	Michel, F. IM SWZ 2362	½	½	½			0	◆		½			
9	Craig, T.J. SCO 2425			1	½	0				◆	0	½	
10	Lukšas, J. LIT 2443	½	0		½				½	1	◆	½	
11	Backlund, A. IM FIN 2439	½	0	½	½	½		½	½	½	½	◆	

No	BOARD 4 - P.M. GIULIAN	1	2	3	4	5	6	7	8	9	10	11	Pts
1	Makarov, A.A. IM RUS 2553	◆			½						½		
2	Bergquist, R. NOR 2492		◆	½				½	½	0	1	½	
3	Salter, IRL 2388	½	◆		1	½			½	0		½	
4	Matić, D. CRO 2409	½		0	◆	½		0	½	1		½	
5	Gonzalez Freixas, A IM ESP			½	½	◆							
6	Forgács, P. SLK 2451						◆						
7	Marcinkiewicz, A IM POL 2370	½		1				◆	1	0	0		
8	Girod, F. SWZ 2363	½	½	½				0	◆	0	0	0	
9	Giulian, P.M. IM SCO 2394	½	1	1	0				1	1	◆	1	
10	Mužas, K. LIT 2301		0						1		◆	0	
11	Neuvonen, O. IM FIN 2420	½	½	½				1	1	0	1	◆	

No	BOARD 5 - G.D. PYRICH	1	2	3	4	5	6	7	8	9	10	11	Pts
1	Muzyka, N.A. IM RUS 2477	◆											
2	Boger, R. NOR 2473		◆	½			½				1	½	
3	Clarke, T. IRL 2266	½	◆				0	½	0	0		0	
4	Hibner, B. CRO 2343				◆								
5	Cutillas Ripoli, P. IM ESP 2476					◆				1			
6	Eiben, P. SLK 2442	½	1				◆	1					
7	Kasperski, S. POL 2376		½				0	◆		½	½		
8	Schaar, M. SWZ 2350			1					◆	½	½		
9	Pyrich, G.D. IM SCO 2377			1		0			½	◆	½		
10	Arulis, A.J. LIT 2385		0					½			◆	½	
11	Palmo, P. GM FIN 2463	½	1					½	½	½	½	◆	

No	BOARD 6 - D.S. FINNIE	1	2	3	4	5	6	7	8	9	10	11	Pts
1	Yunonin, S.R. RUS 2396	◆											
2	Strand, K.W. IM NOR 2448		◆			0			½			0	
3	Sheehan, M.J. IRL 2353			◆	½	½	1	1		½			
4	Zivković, M. CRO 2334			½	◆	½	0			0			
5	Barrios Troncoso, J.A. ESP 2469		1	½	½	◆				½	½		
6	Mičiak, E. SLK 2431		0	1			◆	½	1	½			
7	Wydrowski, L. POL 2381		0			½		◆		½			
8	Würth, T. SWZ 2348	½							◆			½	
9	Finnie, D.S. SCO 2377		½	1	½	½	½			◆	½		
10	Kaminskas, A. LIT 2418										◆		
11	Pigg, FIN 2482	1			½			½	½			◆	

No	BOARD 7 - C.J. LENNOX	1	2	3	4	5	6	7	8	9	10	11	Pts
1	Kashlyak, A.N. IM RUS 2370	◆											
2	Andresen, T. NOR 2417		◆	½					½	½	½		
3	Blair, D. IRL 2232	½	◆	½	½	½			½				
4	Cvetnić, V. CRO 2289		½	◆	½		½		½	½	½		
5	Magallón Mínguez, M ESP 2461		½	½	◆					½	½	0	
6	Bazela, E. SLK 2397			½				◆	½	½			
7	Woytyra, S. POL 2348				½			½	◆	½	1		
8	Kramer, H. SWZ 2335	½	½				½	½		◆		½	
9	Lennox, C.J. SCO 2358	½		½	½			0			◆		
10	Sčiupokas, A. LIT 2327				½							◆	0
11	Hesse, G. IM FIN 2390	½		½	1				½		1	◆	

No	BOARD 8 - I. AIRD	1	2	3	4	5	6	7	8	9	10	11	Pts
1	Lyukmanov, V.B. RUS 2376	◆	½						0	0			
2	Klausen, T-A. NOR 2377	½	◆				½	0	½	1		½	
3	Fayne, T. IRL 2277			◆		½			0		0		
4	Kršovnik, E. CRO 2287				◆					½			
5	Pascual Gras, E. ESP 2456			½		◆							
6	Karásek, L. SLK 2391	½					◆			½	½		
7	Dziel, J. POL 2322	1						◆	½	½	½		
8	Baumgartner, U. SWZ 2307	1	½	1					½	◆	1		
9	Aird, I. SCO 2333	1	0		½	½	½	0	◆	0	½		
10	Petratis, G. LIT 2319							½	1	◆	1		
11	Fröberg, H. FIN 2444	½	1			½				½	0	◆	

No	BOARD 9 - A.C. NORRIS	1	2	3	4	5	6	7	8	9	10	11	Pts
1	Kuzenkov, A.V. RUS 2358	◆											
2	Harestad, T.G. NOR 2375		◆			½				1		½	
3	Robb, D. IRL 2217			◆		0					1		
4	Paravić, Z. CRO 2245				◆								
5	Suárez Sedeño, M. ESP 2417	½	1			◆				½	½		
6	Polaković, P. SLK 2340									◆			
7	Gronkowski, POL 2200										◆	1	½
8	Muri, H. SWZ 2306					½				◆			
9	Norris, A.C. SCO 2247	0							0		◆	0	0
10	Rupsys, LIT 2416		0		½	½				1	◆	½	
11	Lehto, A. IM FIN 2417	½			½					1	½	◆	

No	BOARD 10 - R. MONTGOMERY	1	2	3	4	5	6	7	8	9	10	11	Pts
1	Maksimov, Y.L. RUS 2200	◆											
2	Olsen, S. NOR 2346		◆	½	½	½						1	
3	Smith, IRL 2200	½	◆		½								
4	Tomic, CRO 2200	½		◆	0							1	
5	Cruzado Dueñas, C. ESP 2429	½	½	1	◆				½	1	0	1	
6	Václav, J. SLK 2297							◆					
7	Wojtkowiak, R. POL 2289									◆			
8	Welti, M. SWZ 2200						½			◆			
9	Montgomery, R.S. SCO 2271						0				◆		
10	Novikovas, A. LIT 2416	0	0	1								◆	
11	Karjalainen, P. FIN 2388						0						◆

No	BOARD 11 - J.A. FINDLAY	1	2	3	4	5	6	7	8	9	10	11	Pts
1	Aryutkin, RUS 2200	◆											
2	Lvholt, T. NOR 2343		◆		1				0	½	½		
3	Forte, L. IRL 2200			◆								0	
4	Hrvacic, CRO 2306	0		◆					½		½		
5	Lanz Calavia, JM IM ESP 2410							◆					
6	Veselský, J. SLK 2228										◆	½	½
7	Müller, M. POL 2288									◆			0
8	Uttinger, SWZ 2243	1		½						◆	½	½	½
9	Findlay, J.A. SCO 2200								½	◆	½	½	
10	Stankevičius, L. LIT 2398	½						½	½	½	◆	1	
11	Rissanen, H. FIN 2439	½	1	½			½		½	½	0	◆	

No	BOARD 12 - B. MILLIGAN	1	2	3	4	5	6	7	8	9	10	11	Pts
1													

Chess Suppliers (Scotland)

15 Hope Street (1st floor), Glasgow G2 6AQ.

Tel/Fax: 0141 248 2887

e-mail: shop@chess-suppliers.co.uk

EASY GUIDE to ANY 4 GET 1 FREE !!!

Buy any 4 of the following 12 titles and get 1 free (£12.99 each)

Easy Guide to the 5Nge2 Kings Indian-Forintos/Haag

Easy Guide to the Classical Sicilian-Yrjola

Easy Guide to the Queen's Gambit Accepted-Buckley

Easy Guide to the Panov-Botvinnik Attack-Aagaard

Easy Guide to the Reti Opening-Dunnington

Easy Guide to the Sicilian Scheveningen-Pedersen

Easy Guide to the Bb5 Sicilian-Pedersen

Easy Guide to the Dragon-Golubev

Easy Guide to the Nimzo-Indian-Emms

Easy Guide to the Najdorf-Kosten

Easy Guide to the Ruy Lopez-Emms

Easy Guide to the Sveshnikov Sicilian-Aagaard

Other discounts do not apply. Please include £2.50 p&p (offer applies to UK only).

INFORMATOR 79 out

New Books

Khalifman (life & games) = Nesis £16.99

Just the Facts = Alburd £18.99

The Ultimate Chess Puzzle Book = Emms £16.99

Its Your Move = Ward £14.99

The Hedgehog = Suba £14.99

The Magic of Mikhail Tal = Gallagher £16.99

Super Nezh = Pishkin £16.99

NEW paperback edition!!

Modern Chess Openings 14th Ed (Batsford)

Chess equipment for Clubs, Schools, Individuals!!

Ideal package for the schools library, a selection of books that are guaranteed to help the individual improve their skills!!

All five books £40.00 + P&P

Starting out in Chess-Jacobs

Tips for Young Players-Sadler

Improve Your Opening Play-Ward

Improve Your Middlegame Play-Kinsman

Improve Your Endgame Play-Flear

Other discounts do not apply. (offer applies to UK only).

Now Online at www.chess-suppliers.co.uk